



At OwyheeAvalanche.com: Marsing school feast photos

Holiday parade, Page 2
Homedale Chamber starts planning

Marsing downs Parma, Page 13
First win over Panthers since '05

Established 1865

The Owyhee Avalanche

VOL. 25, NO. 48 75 CENTS

HOMEDALE, OWYHEE COUNTY, IDAHO

WEDNESDAY, DECEMBER 1, 2010

Revolutionary ride for bicyclists



Above: Marsing inventor Jeri Rutherford shows off an integrated light, which is an option on the newly marketed bicycle seat from her Rideout Technologies company. **Below:** The Carbon Comfort Saddle is positioned between two styles of conventional bicycle seats.

Marsing resident develops bike seat for comfortable ride

Not much has changed in the design of bicycle seats since the early 1900s, the standard saddle-style seat is made to support 100 percent of the rider's weight and offers little comfort.

With her invention — the Carbon Comfort bicycle saddle — Marsing businesswoman Jeri Rutherford, hopes that those

— See *Seat*, page 5



County ends year with more than \$6M cash in coffers

Transient property used in construction jobs valued at \$3M

Commissioners received good news about Owyhee County's cash on hand last week, even as another tax source was valued lower than a year ago.

According to the final quarterly financial report from the county treasurer's office, Owyhee County ended fiscal year 2010 with an available cash balance of \$6.36 million. All fund balances finished in the black, even though the probation, health district and historical society and museum budgets began the fourth quarter running a deficit.

County Clerk Charlotte
— See *County*, page 5

Wish Tree begins



Idaho Pizza Co. owner Echo Hall picks a tag off the Wish Tree at her Homedale business Monday. The annual project for needy children has placed several trees around town. See story, *Page 3*.

Homedale businesses start OHR gift projects

The annual gift drive for Owyhee Health and Rehabilitation Center nursing home residents is under way.

Once again this year, The Owyhee Avalanche will host a

gift drive, and each patient's wish list can be found on Page 10 of today's newspaper.

Drop off gifts at the Avalanche

— See *OHR*, page 4

Subscribe today

Get the news source of the Owyhees delivered directly to you each Wednesday

Only \$31.80 in Owyhee County

Call 337-4681

School menus 6

Death notices 6

Calendar 7

Peary Perry 7

Water report 12

Sports 13-16

Looking Back 17

Commentary 18-19

Legals 20-22

Classifieds 22-23

Inside

HHS boys
set for season
Page 13

Thompson succeeds Briggs with OCD

Farmers Appreciation Day, pesticides recertification set Tuesday

The newest Owyhee Conservation District supervisor isn't a new face to the board. Marsing resident Elmon Thompson, who has served as an associate supervisor, will move into a four-year term as an elected supervisor with next week's monthly meeting.

Thompson will take over the seat previously held by Marsing farmer Jim Briggs.

Briggs chose not to run for re-election because of an abundance of other commitments, district administrative assistant Gina Millard said.

Thompson's ascension to the board of supervisors opens a spot in the associate supervisors roster, and Millard encourages anyone interested in taking part in the conservation district board's affairs to contact her at the U.S. Department of Agriculture Service Center, 250 Old Bruneau Hwy., in Marsing or call (208) 896-4544, ext. 102.

The next board meeting will be held Tuesday in conjunction with the district's annual Farmers Appreciation Day.

The Farmers Appreciation Day begins at 9 a.m. at the University of Idaho Owyhee County Extension Office and also includes a pesticides class for any producer seeking license renewal.

With no contested races for the board of supervisors, the OCD didn't hold an election in November. Thompson will join incumbent supervisors Rick Smith, Ray Mansidor and Chuck Kiester, all of whom faced no opposition and earned new four-year terms.

The rest of the board includes Charles Chadez, Tim Volk and John Cossel.

The OCD board of supervisors usually meeting on the second Thursday of the month, but have altered their meeting schedule for December because of the Farmers Appreciation Day event.

The regular meeting schedule resumes next month with a 10 a.m. gathering on Jan. 13 at the USDA Service Center.

The meeting time will switch to 8 p.m. in April for the spring and summer months, Millard said.

Marsing school plans Christmas shows

Marsing Elementary School will hold its Christmas programs Monday and Tuesday.

Programs will be held at 7 p.m. both nights inside the school district cafeteria on 8th Avenue West.

Kindergarteners through second-graders will perform Monday night, and the third- through fifth-graders take the stage Tuesday.

Both programs feature "good, old-fashioned singing" from the school's students, according to music instructor Liz Lacer.

Students will perform both traditional and non-traditional Christmas music.

"We hope to have a good time and then go home filled with the Christmas spirit," Lacer said.

Police nab man wanted on felony on Thanksgiving

Suspect wanted in Canyon arrested Monday

Working off a tip, the Homedale Police Department was able to arrest an individual with nearly \$60,000 in bench warrants on Thanksgiving night. Another individual was picked up on a \$5,000 warrant Monday morning.

Freddy Ponce, 25, of Homedale, was arrested on Thursday after acting Police Chief Sgt. Mike McFetridge received a tip that the suspect was at the Jacksons gas station in Homedale. McFetridge was able to apprehend Ponce without incident. He was booked into the Owyhee County Jail.

Ponce had a \$50,000 bench warrant for failure to appear on a felony drug possession charge from June. HPD Officer Jeff Jensen arrested Ponce for possession of a controlled substance on June 27. Ponce was also cited for controlled substance deliver or possess in jail when a controlled substance was found on his person while being booked into the Owyhee County Jail.

In addition to the felony warrant, Ponce had one misdemeanor warrant from Owyhee County and one from Canyon County. Ponce was cited on June 6 by HPD Officer Steve Atkins for driving without privileges. A bench warrant of \$2,500 was issued for failure to appear in August.

Ponce also had a failure to appear warrant from Caldwell Police Department from a driving without privileges charge and failure to provide proof of insurance from a traffic stop in December 2009. The Canyon County warrant was for \$5,000.

Antonio Reyes IV, 24, of Caldwell, was arrested Monday after McFetridge was dispatched to a report of an unwanted subject at a Homedale residence late Sunday night. Reyes was arrested and transported to the Canyon County Jail.

Reyes had a \$5,000 failure to appear warrant for petit theft and disorderly conduct from an arrest made by Caldwell Police Department in August 2009.



Antonio Reyes IV

—JLZ

Homedale Chamber plans for parade

Business leaders will plan for the annual Homedale for the Holidays parade during next week's Homedale Chamber of Commerce December luncheon.

Chamber members also will learn about resources available to families of deployed service members.

The meeting begins at noon Tuesday at the Owyhee Lanes and Restaurant, 18 N. 1st St. W.

The featured speaker is a representative from the Idaho National Guard, who will discuss helping local military families as well as ways that employers and local businesses can partner with the National Guard.

Chamber members also will finalize plans for its holiday parade, which is scheduled for 10 a.m. on Saturday, Dec. 11. Entries will line up on West Owyhee Avenue beginning at 9:30 a.m. The traditional prize drawing will be held at the conclusion of the parade.

"As in the past, businesses are encouraged to contribute \$20 towards a turkey or provide a gift basket to be raffled off after the parade," Chamber president Gavin Parker said.

Santa Claus will ride in the parade and also spend time with children afterward.

Parker also is encouraging Homedale businesses to get in the spirit by decorating storefronts or business lobbies or entrances.

Businesses wanting to participate in either the decorating contest or the post-parade raffle can contact Parker at 337-3271.

REEL TIME VIDEO

We've Moved! 102 W. Idaho Ave. Homedale • 337-6199 • Stop By!

More DVD's • Kid's Room Gift Shop • Arcade Machines Wedding Rentals & Much More!



25% Better Results vs. the Competition*

Along with you never needing to pre-rinse your dishes, every full-size 2010 KitchenAid® dishwasher delivers quality performance features that provide superior cleaning results. And, all our dishwashers feature the dedicated drying system, providing high-performance drying. Dishes will sparkle to a near spot-free shine without towel-drying.

*Combined wash and dry results of leading premium brands' highest MSRP models; dry testing conducted without rinse aid.

For additional information about KitchenAid® appliances, visit KitchenAid.com

®Registered trademark/™Trademark/the shape of the stand mixer is a registered trademark of KitchenAid, U.S.A. ©2010. All rights reserved.



KUDC031VWH
Classic Series
Dishwasher



KUDC031VBL
Classic Series
Dishwasher



KUDC03FVSS
Classic Series
Dishwasher

On Sale for the Holidays!



Rostock

FURNITURE & APPLIANCE of CALDWELL

Your Downtown Neighborhood Store for 40 years!
307 South Kimball, Caldwell 459-0816



Big turnout for seniors' Thanksgiving
Cook Joan Thompson loads up the yams Wednesday during the Homedale Senior Center's annual Thanksgiving dinner, which attracted nearly 100 diners.

Wish Tree efforts hit full stride

Schools' food drive starts; fundraiser, service project set Saturday

Volunteers put up Wish Trees in numerous Homedale businesses last week, and the annual fundraiser to help local families at Christmas will be held Saturday.

The Homedale Wish Tree Texas Hold 'em Tournament will be held Saturday at the Txoko Ona Basque Center, 333 S. Main St. The doors open at 6 p.m. with the tournament starting at 7 p.m.

The tournament has a \$30 buy-in with re-buys and add-ons available.

Food and drink will be available and there will be a silent auction and raffle.

Every player who makes the final table is guaranteed a prize.

Proceeds will benefit the Wish Tree effort for this year.

For more information on the tournament, call Diana Uranga-Maxwell at 573-2285, Lori Badiola at 573-8456 or Teresa Ryska at 608-8381.

Trees filled with the Christmas wish tags from needy Homedale children were put up last week at Paul's Market, 20 E. Wyoming Ave.; the Homedale Post Office, 7 N. Main St.; Tolmie's Ace Hardware, 1 E. Owyhee Ave.; Moxie Java Bistro, 404 U.S. Hwy. 95; Idaho Pizza Co., 138 E. Idaho Ave.; Subway sandwich shop, 321 E. Idaho Ave.; and Owyhee Lanes

and Restaurant, 18 N. 1st St. W.

Presents, wrapped or unwrapped, must be returned with the corresponding tags to the location where the tag was obtained by Wednesday, Dec. 15. Personnel from the Homedale Fire Department and Police Department will deliver the presents to the families on Saturday, Dec. 18.

A total of 38 families will have tags on the trees, Uranga-Maxwell said.

The Wish Tree is held in collaboration with the Hands Around Homedale food drive, which began a three-week run Monday at the town's three schools.

Items from the food drive will be packed by volunteers beginning at 2 p.m. on Friday, Dec. 17, and the distribution to the needy families will take place from 4 p.m. to 6 p.m. that day.

Paul's Market shoppers can donate Price-Cutter Club points to supply hams and turkeys for the food boxes by visiting the store's customer service desk.

Homedale Elementary School counselor Randee Garrett, who coordinates the Hands Around Homedale event each year, said that a total of 51 families signed up for help this year, but that several families' needs are being met by other organizations, including

Homedale FFA with its Gift of Green, Eastern Star, a local business and a local family.

She also said that five children will be accompanied by Homedale Police officers to Saturday's annual Shop With a Cop event in Nampa.

Garrett also said that older residents without schoolchildren usually come forward for help before the end of the food drive.

"It seems we always build up to about 60 families by the time we finish our food drive," Garrett said.

This year, families who receive assistance from the program will have the opportunity to help others.

Garrett said each family on the list will be able to send one member to make pillowcases for Saint Alphonsus Regional Medical Center pediatric cancer patients. The effort is part of the Pennsylvania-based ConKerr Cancer A Case for Smiles project.

Local families can create pillowcases from 10 a.m. to noon on Saturday at the elementary school, 420 W. Washington Ave.

*Buy it, sell it,
trade it, rent it...
in the*

Classifieds!

Marsing City and Marsing Chamber of Commerce Present:

A Day at the North Pole

Saturday, December 11

Join the Fun!



10 AM - Parade
Roman Usabel, Master of Ceremony
Mr. & Mrs. Claus
Owyhee Cattlemen's Association
Marsing High School Band
Old Cars
Horse & Carriage & Much More!

11 AM - 4 PM - American Legion Hall
Craft & Food Vendors
Kiddie Corner
Mr. & Mrs. Claus

1 PM - Decorated Tree Auction
American Legion Hall
Proceeds to The Harold Shockley
Memorial Educational Fund

Near Dusk - River Park
Marsing City Tree Lighting
by Mayor Keith Green



Owyhee County ordinances hit Web, completing five-year, \$5,500 project

Owyhee County’s book of ordinances is now available for viewing on the Internet.

The Board of County Commissioners last week authorized Sterling Codifiers of Coeur d’Alene to host the online version of the ordinances, which can be accessed through the front page of the county’s Web site, www.owyheecounty.net.

The vote wrapped up a five-year codification project that the county launched during the tenure of then-Prosecuting Attorney Matthew Faulks.

Sterling Codifiers amassed the ordinances and will host the searchable database. Hard copies of the code also will be housed at the county courthouse in Murphy.

Sterling Codifiers was contracted in late April 2005 to compile the county’s ordinances. Now that codification is complete, the county will retain the company to update the ordinances as needed.

The county paid \$4,500 for the codification, \$500 to set up hosting. Sterling will receive an additional \$500 per year for ongoing hosting services. Online updates of code are included in the annual fee, but the county will pay \$20 per page for additional updates to the hard copy codebooks.

Waterways budget set

Commissioners voted to move \$41,150 from the Vessel Trust Fund into the FY 2011 budget. The money will be used to carry out any Waterways Committee recommendations the BOCC approves.

Sherburn said the three-person Waterways Committee hasn’t submitted a formal list of projects, but that a Marsing storage facility for an Owyhee County Sheriff’s Office patrol boat was on the panel’s retention of funds request submitted to the Idaho Department of Parks and Recreation.

The Vessel Fund is seeded with boat registration fees from recreationists who claim Owyhee as their primary county of use. The Waterways Committee has launched an awareness campaign to ensure that folks designate Owyhee County for their registration revenue.

Sherburn said that the Vessel Trust Fund balance will be \$67,320 after the transfer into the FY 2011 budget.

— JPB

Gem Irrigation reviews assessments Tuesday

Three boards hold regular meetings

The Gem Irrigation District board of directors will convene as a Board of Equalization on Tuesday to review and correct assessments.

The date of the assessment review as well as the next round of irrigation board of directors meetings was reported incorrectly in last week’s edition of The Owyhee Avalanche.

Any irrigator who takes issues with his 2011 assessment must file a complaint with district secretary Connie Chadez before Tuesday to be heard.

Assessments are available for review at the Gem Irrigation District office, 118 S. 1st St. W., in Homedale.

The BOE convenes as part of Gem’s regular monthly meeting, which begins at 1:15 p.m. at the district office.

Prior to the Gem board’s meeting, the Ridgeview Irrigation Board holds its regular monthly meeting at 1 p.m.

The South Board of Control directors meet at 1:30 p.m.

Ridgeview and SBOC directors will meet at the Homedale office, which both share with the Gem District.

✓ OHR: Last Chance sets goal of \$2,500 for this year

office, 19 E. Idaho Ave., from 8 a.m. to noon and 1 p.m. to 5 p.m. Monday through Friday. The deadline to drop off presents is noon on Dec. 22.

Be sure to label each gift with the corresponding number on the list. Miscellaneous gift ideas for all residents include throw blankets, pillows, oldies music CDs, perfume and cologne, socks, puzzles, memory games and snacks.

The Last Chance Saloon will hold its annual live auction for OHR residents at 7 p.m. on Saturday, Dec. 11. Organizer Barbara Hendrickson said the fundraising goal this year for the gift drive is \$2,500. Response has been slow thus far this year, she said.

The event at the Last Chance will include live music, with the band starting up at 8:30 p.m.

For more information on the Last Chance Saloon’s live auction, call (208) 337-4916.

GET A FREE WINCH OF A 2011 SPORTSMAN® OR UP TO \$1000 IN REBATES** ON SELECT 2010 MODELS PLUS FINANCING AS LOW AS 3.99%***

Accessories make great gifts!



5604 Cleveland Blvd.
Caldwell, ID 454-8508
www.grizzlysportsusa.com



Offers good on new and unregistered units purchased between 11/1/10 and 12/31/10. *On select 2011 models. Free winch on select models, does not include installation. See your dealer for details. **On select 2010 models. See your dealer for details. ***Rates as low as 3.99% for 36 months. Offers only available at participating Polaris® dealers. Approval, and any rates and terms provided, are based on credit worthiness. Other financing offers are available. Applies to the purchase of all new ATV and RANGER® models made on the Polaris Installment Program from 11/1/10-12/31/10. Fixed APR of 3.99%, 7.99%, or 10.99% will be assigned based on credit approval criteria. Examples of monthly payments over a 36-month term at 3.99% APR: \$29.52 per \$1,000 financed and at 10.99% APR: \$32.73 per \$1,000 financed. Vehicles are shown with optional equipment. Warning: ATVs can be hazardous to operate. For your safety: Avoid operating Polaris ATVs or RANGERS on paved surfaces or public roads. Riders and passengers should always wear helmets, eye protection, protective clothing, and seat belts (on RANGER vehicles). Never carry passengers unless the vehicle has been designed by the manufacturer for that purpose. Polaris adult ATV models are for riders aged 16 and older. Drivers of RANGER vehicles must be at least 16 years old with a valid driver's license. All ATV riders should take a safety training course. For ATV safety and training information in the U.S. call the SVIA at (800) 887-2887, see your dealer, or call Polaris at (800) 342-3764. In Canada, see your local Polaris dealer about Polaris ATVs. Check your local laws before riding on trails. ©2010 Polaris Industries Inc.

The Owyhee Avalanche

P.O. BOX 97 • HOMEDALE, ID 83628
PHONE 208 / 337-4681 • FAX 208 / 337-4867
www.theowyheeavalanche.com



U.S.P.S. NO. 416-340
Copyright 2007—ISSN #8750-6823

JOE E. AMAN, *publisher*
E-mail: joe@owyhee.com

Member JON P. BROWN, *managing editor*
E-mail: jon@owyheeavalanche.com; Ext.: 102

JOHN ZSIRAY, *reporter*
E-mail: john@owyheeavalanche.com; Ext.: 103

JENNIFER STUTHEIT, *office*
E-mail: jennifer@owyheeavalanche.com; Ext.: 101

ROBERT AMAN, *composition*
E-mail: rob@owyheeavalanche.com; Ext.: 105

Published each week in Homedale, Idaho by Owyhee Avalanche, Inc. Entered as Periodical, paid at the Post Office at Homedale, ID under the Act of March 3, 1879. POSTMASTER: send address changes to THE OWYHEE AVALANCHE, P.O. 97, Homedale, ID 83628.

Annual Subscription Rates:

Owyhee County.....	\$31.80
Canyon, Ada counties.....	37.10
Malheur County.....	35.00
Elsewhere in Idaho.....	42.40
Elsewhere (outside Idaho).....	40.00

Deadlines

Classifieds Monday noon the week of publication	Display advertising Friday noon the week prior to publication
Legal notices Friday noon the week prior to publication	Inserts Friday noon the week prior to publication

Letters to the editor
Friday noon the week prior to publication
(Limit 300 words, signed, with day phone number.)

From page 1

✓ Seat: New product sells out quickly at bicycle trade show in Las Vegas

who have lost joy in riding will soon be able to jump back on their bikes and enjoy the thrill of hitting the streets and trails.

“While on a long trip years ago, I reached the point where I had to walk my bike. In my mind’s eye I could always see what I wanted. A seat that would move underneath me just enough and was comfortable,” Rutherford said. “I feel like a 12-year-old again, and that is how bike riding should be. Seat discomfort is the No. 1 complaint of bicycle riders. Even though I was a long-term rider, I had reached the point where I couldn’t ride like I used to due to bottom pain.”

Rutherford’s invention — developed through her Marsing-based company RideOut Technologies LLC — has been a labor of love. She has spent six years developing and testing ideas for a seat that “moves” and “flexes” underneath the rider. The new seat uses a trade-secret injected carbon fiber material along with Kevlar to form a skeleton structure that allows the seat to conform to a riders build.

“This seat is made from injected carbon fiber that nobody is using in seats. The reason for the unique shape is, I really wanted a seat that I could sit on,” Rutherford said. “When we have constant pressure on a body part it is OK for a little



while. When the seat flexes, it allows blood to flow. The seat bends and is still supportive.” Rutherford equated the seat that retails for \$84.95 as a “four-bedroom, three-bath house” with the amount of time and money she has spent through development. The seat went through two years of test marketing and research on other bike seats. She said the seat was tested underneath many different riders, and she has had people using the seat for the past two years.

“We put the seat underneath all kinds of people. Big, big guys and small, thin women,” Rutherford said. “What I found through the research is people telling me they can ride again and they feel comfortable.”

Throughout the two years of test marketing, Rutherford said she has received numerous letters and e-mails from riders telling her “I can ride again”. The seat is designed as a dual-purpose seat for both men and women removing the need for gender

specific seats.

“I had one woman write to me saying, ‘My husband will ride with me now.’ That is neat,” Rutherford said. “I would love to see more people riding their bikes. One man wrote to me and said, ‘I had prostate surgery and had to give up riding’. He is a classic example of someone doing short trips on a bike.”

Rutherford said through her research she found that the average trip in a vehicle was less than five miles. She said her drive to create the seat was based on four key factors.

“If we think of the impact, politically, our waist lines, economically and environmentally, the impact of riding a bike can make an impact on our country,” Rutherford said. “A trip less than five miles is the average. That

means most people are going to work, the post office or little trips and errands. These all could be done on a bike.”

Most recently the seat was tested at the University of Wisconsin at Madison in their Bio-Engineering Department for a pressure-mapping test. The seat was paired up with other seats and riders to show the amount of stress placed on a rider.

“The U of W did all the testing for the pressure mapping. We tested the seat with four people on the exact same bike using two different seat designs,” Rutherford said. “We found compared to a standard seat, as one side goes down it lets the blood flow because the seat flexes. You don’t get the pain and the nerve damage.”

When her seat was unveiled at the InterBike trade show in Las Vegas in September, she sold out of all but two seats the first day of the show. InterBike is the largest bicycle trade show in North America and featured 1,000 suppliers and representatives from

4,000 retail stores.

“We had 100 seats in the first shipment that we took with us to the trade show,” Rutherford said. “It was a three-day show, and I sold out the first day. I had to keep two seats so I could show people what it looked like. I have 2,000 coming in the next shipment and at least a quarter of those are already spoken for.”

The bike seat is sold through the company’s Web site, www.rideouttech.com and will be on the shelves in bicycle shops around the country. Rutherford said she wanted to make a minimum impact on waste when selling the seat.

“The seat will hang on the walls or be on a shelf, that is all the packaging,” Rutherford said. “I didn’t want any boxes or unnecessary stuff going with it. We also have a bag that snaps to the bottom of the seat that has a built-in light.”

In the future, she hopes to move the home-based operation into Marsing and possibly have an office there with one or two full-time employees to help manage the sales and shipping needs of the company.

“I am never going to say that this seat is right for everyone. For the majority of those riders over 30 that want to ride and don’t like pain this might be the way to go,” she said.

—JLZ

✓ County: Road work, mill construction build tax base

Sherburn told the Board of County Commissioners on Nov. 23 that the books on FY 2010 are now closed. The county will operate on a \$7.3 million budget in FY 2011.

“I appreciate everybody tightening their belts that did to keep (spending) under control,” District 3 Commissioner Dick Freund (R-Murphy) said.

According to the quarterly report, the probation office began the fourth quarter with a \$2,986.36 deficit, while the Southwest District Health budget was in the hole by \$1,843.88. The budget for the Owyhee County Historical Society and Museum began the fourth quarter with a \$1,704.35 deficit. All three ended in the black with probation showing a \$19,721.87 cash balance, the health district budget at \$4,967.29 and the OCHS/museum budget at \$6,514.90.

The news came as Assessor Brett Endicott indicated that the assessed value of transient property had dipped about \$1.4 million between FY 2009 and FY 2010 despite several large-scale road projects throughout the county.

Counties are allowed to tax transient property such as construction equipment for the time that companies are in the area on jobs, such as road construction,

infrastructure projects and large-scale construction projects.

The transient property tax roll for FY 2010 amounts to a little more than \$3 million and includes equipment for projects at the Delamar Mine, roadwork, infrastructure and Local Improvement District work in and around Homedale, roadwork outside Marsing and paving on Idaho highway 78 in Murphy.

Endicott also reported that the county’s tax base increased by more than \$450,000 because of new construction, such as new residential structures in the Bruneau-Grand View area and a new building built at the Silver Falcon Mining Co.’s Diamond Creek Mill site on Silver City Road.

The assessor also said that nearly \$36,000 in assessed value returned to the tax rolls in FY 2010 when the Canyon-Owyhee School Services Agency sold its automated engineering classroom on West Idaho Avenue in Homedale to a private company.

—JPB

Find out
What’s happening
Read Calendar each week
in the Avalanche

How Do You pick a bull supplier?

**Commercial cattlemen raising Angus seedstock
Raised in the environment they need to work in**

Emphasis on docility • Moderate framed

**Angus Source Tag cost share program
Fully Guaranteed**

**Top carcass genetics
Award winning carcass data,
ASCC 68.2% CAB and Prime**

BULL SALE

**December 10, 2010
at the ranch in Homedale, Idaho
Fall and Spring Yearlings
40 head bred heifers
from B One Bar Cattle Co.
by Burgess Angus Ranch bulls**

Burgess Angus Ranch
— X —
**Doug and Janice Burgess
208-337-4094
2725 Mule Springs Road
Homedale, Idaho 83628**

School menus

Homedale Elementary

- Dec. 1: Crispito or toasted cheese sandwich, taco salad, fruit & veggie bar, churro, milk
- Dec. 2: Chili or mini beef bagel bites, fruit & veggie bar, roll, fruit rollup, milk
- Dec. 3: Pizza or popcorn chicken, salad, fruit & veggie bar, whole wheat sugar, cookie
- Dec. 6: Chicken tenders or country fried beef steak, mashed potatoes/gravy, roll, fruit & veggie bar, milk
- Dec. 7: Deli or fish sandwich, potato wedges, fruit & veggie bar, animal crackers, milk
- Dec. 8: Chicken nuggets or finger steaks, broccoli, fruit & veggie bar, cinnamon roll, milk

Homedale Middle

- Dec. 1: Idaho haystack or split top sandwich, churro, fruit & veggie bar, milk
- Dec. 2: Beef or chicken taco, fruit & veggie bar, fruit rollup, milk
- Dec. 3: Chicken tenders or chicken fried beef steak, mashed potatoes/gravy, roll, fruit & veggie bar, milk
- Dec. 6: Hamburger or hot dog, potato wedges, fruit & veggie bar, cookie, milk
- Dec. 7: Pizza hot pocket or popcorn chicken, green beans, fruit & veggie bar, bread stick, milk
- Dec. 8: Enchilada or chicken & noodles, corn, fruit & veggie bar, turnover, milk

Homedale High

- Dec. 1: Lasagna or pizza hot pocket, string cheese, French bread, fruit bar, milk
- Dec. 2: Chicken patty or hamburger, potato wedges, fruit & salad bar, sherbet cup, milk
- Dec. 3: Polish sausage, pulled pork BBQ or French dip sandwich, corn, fruit & salad bar, milk
- Dec. 6: Pizza, nachos or chef salad, fruit bar, cookie, milk
- Dec. 7: Chicken nuggets or egg roll, rice pilaf, green beans, fortune cookie, fruit & salad bar, milk
- Dec. 8: Idaho haystack, baked potato or pizza hot pocket, fruit & salad bar, cinnamon roll, milk

Marsing

- Dec. 1: Enchilada, rice, chicken fajita, corn, salad bar, fruit & veggie bar, milk
- Dec. 2: Burrito, cheesy chicken noodle, green beans, salad bar, strawberries & bananas, fruit & veggie bar, milk
- Dec. 3: Chicken sandwich, chili & cornbread, steamed peas, salad bar, fruit & veggie bar, milk
- Dec. 6: Ham/cheese sandwich, chicken fried steak, mashed potatoes, corn, salad bar, fruit & veggie bar, milk
- Dec. 7: Wiener wrap, fish sandwich, mixed vegetable, salad bar, milk, fruit & veggie bar, desert cups
- Dec. 8: Hot dog, chili, rib-b-que, carrots, salad bar, fruit & veggie bar, milk

Schoolchildren’s work adds up for St. Jude



Rockville School students raised \$900 during their participation in the St. Jude Children’s Research Hospital Mathathon. Seven Rockville students secured sponsorships from the community and family and friends and completed the fundraising program’s workbook.

Top row, from left: Third-grader Becky Mackenzie, second-grader Tina Gammett, fourth-grader Michaela Volmer and sixth-grader Andrea Greeley.

Bottom row, from left: First-grader Kaylee Volmer and kindergarteners Chris Mackenzie and Jill Gammett

Submitted photo

U of I Extension offers ag business class geared toward women

Women will have the opportunity to become better business partners in family agricultural operations through the lessons offered in a six-week course offered by the University of Idaho Extension.

Enrollment is limited for the class, which will hold sessions at the U of I Extension Offices in Marsing and Caldwell.

Only 20 women will be accepted in each session for Annie’s Project, which runs from Jan. 13 to Feb. 17. Pre-registration is due by Jan. 7, and the enrollment fee is \$50.

The class will meet from 1 p.m. to 4 p.m. each Thursday in Marsing. The Caldwell class runs on Thursdays from 6 p.m. to 9 p.m.

Funded by a grant from the U.S. Department of Agriculture Western Region Risk Management Agency, Annie’s Project empowers farm women to be better business partners through networks and by managing and organizing critical information.

Enrollees will participate in discussion, presentations and computer training in the use of spreadsheets. They’ll learn from female agricultural professional and network with other women in similar situations.

Topics will include understanding market terminology, interpreting financial statements, and sifting through estate planning tools.

The course fee includes software programs, resources, handouts and an Annie’s Project portfolio.

For more information and to register, contact the Gem County Extension office at (208) 365-6363 or rikkiw@uidaho.edu.

Death notices

JOSEPH D. HILLMAN, 81, of Homedale, died Friday, Nov. 26, 2010, at a local care center. Pending arrangements are under the direction of Flahiff Funeral Chapel, Homedale.

VAL “NICK” GAYLORD TAGGART, 75, who attended Homedale schools, died Sunday, Nov. 21, 2010, in Ovilla, Texas. Visitation and funeral services were held Tuesday, Nov. 30, 2010, at the Church of Jesus Christ of Latter Day Saints in Waxahachie, Texas. Interment followed in the Dallas/Fort Worth National Cemetery in Dallas.

LUELLA B. WOJTALA, 78, who attended Homedale schools, died Tuesday, Nov. 23, 2010, in Great Falls, Mont.

Have a news tip?

Call us!

337-4681

Senior menus

Homedale Senior Center

Includes beverage

Dec. 1: Hearty beef stew, roll

Dec. 2: Roast pork, mashed potatoes, California blend vegetables, roll

Dec. 7: Oven fried chicken, mashed potatoes/gravy, beets, roll

Dec. 8: Spaghetti & meat sauce, salad, roll

Dec. 9: Baked ham, sweet potatoes, green beans, roll

OVER THE HILL!

Dr. Perkins is 50!

Celebrate with us at an OPEN HOUSE

Wednesday, December 1st

4:30-6:30pm

Homedale Chiropractic Center

Your Presence is Your Gift!

2010

GUN SHOW

Best Little Shows in Idaho

Homedale Armory

Homedale, Idaho

SATURDAY, DEC. 4 • SUNDAY, DEC. 5

HOURS: SAT 9-5 - SUN 9-3

Admission \$4.50 for 12 & Over

Buy • Sell • Trade

Guns, Knives & Collectibles

RAFFLE: RUGER 10-22 RIFLE

TICKETS: \$1 EA. OR 3 FOR \$2

FOR MORE INFORMATION CALL:

RAY AMOUREUX 208-870-1712

SPONSORS OF THE SHOW ARE NOT RESPONSIBLE FOR FIRE, THEFT, OR ACCIDENTAL INJURY.

ALL STATE & FEDERAL LAWS ARE TO BE OBSERVED

Calendar

Today

Preschool story time
10:30 a.m., Lizard Butte Library, 111 S. 3rd Ave W., Marsing. (208) 896-4690 weekday afternoons

TRIAD meeting
1 p.m., Marsing Senior Center, 218 Main St., Marsing. (208) 337-4466

Homedale Senior Center board meeting
1:30 p.m., Homedale Senior Center, 224 W. Idaho Ave., Homedale. (208) 337-3020

NOCWMA meeting
7 p.m., North Owyhee County Cooperative Weed Management Area, U.S. Department of Agriculture Service Center, 250 N. Old Bruneau Highway, Marsing. (208) 896-4544, ext. 102

Snake River Irrigation District meeting
7 p.m., Grand View Irrigation District office, 645 Idaho St., Grand View. (208) 834-2350

Thursday

Senior center lunch
Noon, Rimrock Senior Center, 525 Main St., Grand View. (208) 834-2808

Vision Church food distribution
2 p.m. to 4 p.m., donations welcome, Vision Church, 221 W. Main St., Marsing. (208) 896-5407

Soup and prayer day
3 p.m. to 5 p.m., freewill offering accepted, Marsing Assembly of God Church, 139 Kerry St., Marsing. (208) 965-1650

Take Off Pounds Sensibly meeting
5:30 p.m., weigh-in; 6:30 p.m. to 7:30 p.m. meeting, First Presbyterian Church, 320 N. 6th St., Homedale. (208) 482-6893

OCHS membership Christmas party
6 p.m., McKeeth Hall, Owyhee County Historical Museum, 17085 Basey St., Murphy. (208) 495-2319

Celebrate Recovery
6 p.m., Mountain View Church of the Nazarene, 26515 Ustick Road, Wilder. (208) 337-3151

Owyhee County Fair Board meeting
7 p.m., University of Idaho Owyhee County Extension Office, 238 8th Ave. W., Marsing. (208) 337-3888

Homedale Rod and Gun Club meeting
7 p.m., Owyhee Lanes Restaurant, 18 N. 1st St. E., Homedale. (208) 463-4383

Homedale AA meeting
8 p.m., Homedale Senior Center, 224 W. Idaho Ave., Homedale. (208) 571-4048

Friday

Story time at library
10:15 a.m., Homedale Public Library, 125 W. Owyhee Ave., Homedale. (208) 337-4228 between 1 p.m. and 5 p.m. Monday through Friday

Saturday

Grand View Holiday Bazaar
9 a.m. to 3 p.m., Grand View American Legion Post 134, 90 Roosevelt Ave. (Idaho highway 67), Grand View. (208) 834-2313

Homedale Senior Center bazaar
9 a.m. to 3 p.m., table rental: \$12 for large, \$6 for small, Homedale Senior Center, 224 W. Idaho Ave., Homedale. (208) 337-3020

OCHS Christmas bazaar
10 a.m. to 5 p.m., Owyhee County Historical Museum, 17085 Basey St., Murphy. (208) 495-2319

American Legion poker fundraiser
4 p.m., \$10 buy-in, Cowboy Up Saloon, 2 N. Main St., Homedale. (208) 337-3414

Wish Tree poker fundraiser
6 p.m. doors open, 7 p.m. tournament starts, \$30 buy-in, re-buy and add-ons available, raffle and silent auction, Txoko Ona Basque Center, 333 S. Main St., Homedale. (208) 573-2285, (208) 573-8456 or (208) 608-8381

Sunday

Marsing Gun Club shoot
For more information, call Tim Dines at 573-3321 or Marty Floyd at 573-3533.

OCHS Christmas bazaar
10 a.m. to 3 p.m., Owyhee County Historical Museum, 17085 Basey St., Murphy. (208) 495-2319

Monday

Homedale Public Library board meeting
10 a.m., Homedale Public Library, 125 W. Owyhee Ave., Homedale

Grand View Mutual Canal Co. meeting
7 p.m., Grand View Irrigation District office, 645 Idaho St., Grand View. (208) 834-2350

Narcotics Anonymous open meeting
8 p.m., Homedale Friends Community Church, 17454 Hwy. 95 S., Homedale. (208) 442-2220

Tuesday

Board of County Commissioners meeting
9 a.m., Courtroom 2, Owyhee County Courthouse, 20381 State Hwy. 78, Murphy

Farmers Appreciation Day
9 a.m., OCD supervisors monthly meeting and pesticides recertification included, University of Idaho Owyhee County Extension Office, 238 8th Ave. W., Marsing. (208) 896-4544, ext. 102

Grand View Irrigation board meeting
11 a.m., Grand View Irrigation District office, 645 Idaho St., Grand View. (208) 834-2350

Senior center lunch
11 a.m., Christmas songs by HMS sixth-graders, Homedale Senior Center, 224 W. Idaho Ave., Homedale. (208) 337-3020

Homedale Chamber of Commerce luncheon
Noon, Owyhee Lanes and Restaurant, 18 N. 1st St. W., Homedale. (208) 337-3271

Rimrock quilting group
1 p.m., Rimrock Senior Center, 525 Main St., Grand View. (208) 834-2665

Ridgeview Irrigation District board meeting
1 p.m., South Board of Control office, 118 S. 1st St. W., Homedale. (208) 337-3760

Gem Irrigation District board meeting
1:15 p.m., South Board of Control office, 118 S. 1st St. W., Homedale. (208) 337-3760

South Board of Control board meeting
1:30 p.m., South Board of Control office, 118 S. 1st St. W., Homedale. (208) 337-3760

Afterschool story time
4:15 p.m., Lizard Butte Library, 111 S. 3rd Ave W., Marsing. Kindergarten through third grade welcome. (208) 896-4690 weekday afternoons for more information.

Senior citizens dinner
6 p.m., Rimrock Senior Center, 525 Main St., Grand View. (208) 834-2808

Grand View PTA meeting
7 p.m., Grand View Elementary School, 205 First St., Grand View

Homedale AA meeting
8 p.m., Homedale Senior Center, 224 W. Idaho Ave., Homedale. (208) 571-4048

Wednesday

Preschool story time
10:30 a.m., Lizard Butte Library, 111 S. 3rd Ave W., Marsing. (208) 896-4690 weekday afternoons

Homedale Senior Center board meeting
1:30 p.m., Homedale Senior Center, 224 W. Idaho Ave., Homedale. (208) 337-3020

Owyhee Watershed Council meeting
4 p.m., University of Idaho Owyhee County Extension Office, 238 8th Ave. W., Marsing. (541) 372-5782

Homedale City Council meeting
6 p.m., City Hall, 31 W. Wyoming Ave., Homedale. (208) 337-4641

Grand View City Council meeting
7 p.m., Grand View City Hall, 425 Boise Ave., Grand View. (208) 834-2700, Monday through Wednesday



Bet You Didn't Know Famous admiral flew U.S., Russian flags

Our own John Paul Jones was also an admiral in the Russian Navy. Fought with the Russians against the Turks in 1788.

A baby giraffe is just about six feet tall at birth ...

1 Cherry St., New York City ... Bet you forgot that it was the site of the first presidential mansion, didn't you?

Calvin Coolidge has been the only president so far to have been born on the Fourth of July.

— For more information on Peary Perry or to read more of his writings or to make a comment, visit www.pearyperry.com

Charlie Brown Christmas trees, more sold at bazaar

A full spectrum of vendors is expected this weekend for the annual Owyhee County Historical Society Christmas Bazaar in Murphy.

The bazaar is at the Owyhee County Historical Museum, 17085 Basey St. The annual Charlie Brown Christmas tree sale features trees cut from around the Silver City area available for \$15 for trees under six feet tall and \$20 for trees as tall as eight feet.

Food also will be available. The bazaar featuring local arts, crafts, food and home accessories runs 10 a.m. to 5 p.m. on Saturday and 10 a.m. to 3 p.m. on Sunday.

Museum director Thom Couch said the vendor list is nearing capacity, but prospective sellers can call Jan Alexander at the museum, (208) 495-2319, to inquire about booth space. Spaces cost \$25 per table, and the OCHS will provide the table and chairs.

Cowboy Up hosts benefit poker for Legion post

A benefit poker tournament is scheduled Saturday to help the George D. VanDerhoff Post 32 of the American Legion fund upcoming events.

The Cowboy Up Saloon, 2 N. Main St., will play host to Saturday's Texas Hold 'em poker tournament. The buy-in is \$10.

The tournament starts at 4 p.m. For more information on the tournament, call 337-3414.

Proceeds benefit Homedale's Legion post's free community Christmas dinner on Friday, Dec. 17. The public is invited to the dinner, which will be served from 5 p.m. to 7 p.m. at the Legion Hall, 14 E. Owyhee Ave. Santa Claus will visit with candy and small gifts for the children beginning at about 6 p.m.

River Haven R.V. Park

Quiet Country Atmosphere

2 Miles South of Marsing
6920 Old Bruneau Highway • Marsing Idaho, 83639

- Fishing in the Snake River
- Full Hook-Ups
- Spaces Available
- Picnic/Park Area

- Daily/Weekly/Monthly Rates
- Small Pets on Leashes Allowed

STORAGE UNITS AVAILABLE

Full Line Laundromat

Propane

Call: 896-4268

Proceeds from Grand View bazaar to benefit park

A holiday bazaar will be held Saturday at the Grand View American Legion Post 134 Hall.

More than 20 local crafters will sell wares from 9 a.m. to 3 p.m. at the Legion Hall, 90 Roosevelt Ave. (Idaho highway 67).

Proceeds from booth rental and the sale

of white chili and coffee will go to the fund dedicated to developing Centennial Park. White chili is chili made with white beans and chicken.

For more information on the bazaar, call Jackie Lucas at (208) 834-2313.

Among the booths will be the Grand

View PTA's gold drive benefit through which people can sell their scrap gold with 10 percent of the proceeds going to the PTA to help with the Grand View Elementary School field trip budget. Raffle tickets for the school's annual Christmas basket giveaway also will be available for \$1 each or

six for \$5. The tickets will be drawn during Grand View's Christmas program, which is set for 7 p.m. on Tuesday, Dec. 14, at Rimrock Jr.-Sr. High School.

For more information on the Grand View PTA fundraising efforts, call Deidre Erwin at (208) 845-2273.

THE BUSINESS DIRECTORY

CONSTRUCTION

We Do: Decks - Windows - Carports
Shops - Room Additions
Kitchens - Bathrooms - Garages
**CALL FOR
FREE ESTIMATES**
337-4423
Serving Owyhee County &
Surrounding Areas
**NO JOB TOO BIG
OR TOO SMALL
SAVE NOW! \$\$**

ELECTRICIAN

H&H ELECTRIC
Serving Owyhee
County for 25 years
Jeff Haylett
337-8018
Contractor License# 23189
Electrical Contractor - State of Idaho

SAND & GRAVEL

**Owyhee Sand,
Gravel & Concrete**
337-5057
Bill 573-2341 • Ray 573-2339
HOMEDALE, IDAHO
ALL TYPES OF ROCK & DIRT
STATE CERTIFIED DRAIN ROCK
FREE ESTIMATES ON ROADS & DRIVEWAYS
Chuck, Ray & Bill Maxwell

REALTOR

Looking To Buy Or Sell A Home?
CALL ME, I CAN HELP!
Becki Emery
Realtor®
(208) 392-7904
EXIT
of
Treasure Valley

ADVERTISING

**YOUR AD HERE!
\$10.00 PER WEEK**

OWYHEE
AVALANCHE
337-4681

CARPENTRY

QUALITY CARPENTRY
UNBEATABLE RATES!
CALL FOR FREE ESTIMATES.
NO JOB TOO SMALL.
BOB PAASCH 482-7204
BOB'S CARPENTRY • WILDER
Idaho Lic # RCT-12463

HEATING & COOLING

BAUER
HEATING & COOLING

RESIDENTIAL & COMMERCIAL
NEW CONSTRUCTION • REMODELS
SERVICE • SALES • REPAIR
CALL 573-1788
Se Habla Español - 899-3428
FINANCING AVAILABLE O.A.C.

PAINTING

VALSPEC
PAINTING LLC
RCE #26126
LICENSED &
INSURED

Residential • Commercial • Industrial
Jace Davis • 208.573.7348
jacdav7673@yahoo.com
26550 Upper Pleasant Ridge Rd.
Wilder, ID 83676

STEEL BUILDINGS

R & M STEEL COMPANY

STEEL BUILDINGS
Since 1969
**Equipment Storage • Hay Shed • Shop
Barn • Arena • Hangar**
Phone: 1 (866) 454-1800 20595 Farmway Road
Fax: 1 (866) 454-1801 www.rmsteel.com Caldwell, ID

SIDING CONTRACTORS

MGM
Siding Contractors
William T. Bruce
1024 W. Finch Dr.
Nampa • 465-0214 • Fax 465-9831
ICB# RCE-300 • OCCB# 164231
Vinyl, Steel & Aluminum Siding
Vinyl Windows
BALCOA
Master Contractor
Craftsmanship You can Trust

CONCRETE

**Ray Jensen Concrete
Construction**

31 Years Experience
Commercial and Residential
Specializing in Curb and Gutter
ALSO: Foundations, Walls, Sidewalks, Steps,
Colored and Stamped Patios, Driveways, and Irrigation
Call # 899-9502 Home # 482-7757
Fax # 482-6275

ICR License # RCT-69 CCB License # 168475
28544 Peckham Road, Wilder, Idaho 83676

INSULATION

ARE YOU READY FOR WINTER?
WORRIED ABOUT HIGH HEATING BILLS?
LET IDAHO POWER HELP WITH
THE COST OF ADDING MORE
INSULATION IN YOUR ATTIC

**FOR DETAILS, CALL
CLANCEY MILBURN**
(208) 936-8435

FAIR, HONEST & LOCAL SERVICE
COMPETITIVE PRICES • 20 YEARS EXPERIENCE
FULLY INSURED

PLUMBING & DRAIN CLEANING

**Affordable Rooter
& Plumbing, inc.**

Plumbing • Drain Cleaning
Excavation • Septic Pumping
24 Hour Emergency Service
Locally Owned and Operated
208-475-0021

RCE# C-1780

DOG GROOMING

Rub-A-Dub Dog

Bathing, Brushing,
Flea Treatment,
Toenail Clipping

Small Dog Grooming: \$10
Karen Lentfer • 249-0799
Open Monday - Saturday
jklentfer09@frontier.com

CHIROPRACTIC

**Auto Accidents:
Disc Injury, Whiplash & Neck Pain**
HOMEDALE CHIROPRACTIC CENTER
GENTLE AND AFFORDABLE
ACCEPTING MOST INSURANCE
Call 208/337-4900
for a No-Cost Consultation

J. Edward Perkins, Jr. D.C.
111 S. Main - Homedale

CHIROPRACTIC

Homedale Clinic

Terry Reilly Health Services
Rebecca Ratcliff, MD
Richard Ernest, CRNP
Family Nurse Practitioner
108 E. Idaho, Box 1058
Homedale, Idaho 83628
337-3189, Night 466-7869
Mon., Wed., Thurs. & Fri. 8:30 - 5:00
Tuesday 8:30 am - 9:00 pm
We Welcome Medicaid and Private Insurance.

HEALTH SERVICES

Marsing Clinic

Terry Reilly Health Services
Faith Peterson, CRNP
Family Nurse Practitioner
201 Main Street, Marsing, Id. 83639
896-4159, Night 466-7869
Mon., Tues., Wed., & Fri. 8:00 - 5:00
Thursday 8:00 am - 9:00 pm

HEALTH SERVICES

Homedale Dental

Terry Reilly Health Services
Eight 2nd Street West,
Homedale, Idaho 83628
337-6101
Jim Neerings, DDS
Monday - Thursday 7:30-1:30/2:00-6:00
Accepting Emergency Walk-Ins Daily

ADVERTISING

**YOUR AD HERE!
\$10.00 PER WEEK**

OWYHEE
AVALANCHE
337-4681

AUTO RECYCLING

**FREE VEHICLE
REMOVAL**
WE PAY \$100 GUARANTEED
DNA AUTO RECYCLING
412-6159

CHIROPRACTIC

School Physicals
Weight Loss Program
D.O.T. Physicals
Accepting Most Insurance
MARSING
CHIROPRACTIC
(208) 896-5520

STEEL ROOFING & SIDING

R & M STEEL COMPANY

Since 1969 Factory Direct
Made to Order

**STEEL ROOFING
& SIDING**
For all your building or
remodeling projects

**Equipment Storage • Hay Shed • Shop
Barn • Arena • Hangar**
Phone: 1 (866) 454-1800 20595 Farmway Road
Fax: 1 (866) 454-1801 www.rmsteel.com Caldwell, ID

IRRIGATION

Valley Irrigation of Idaho
Call us for all your irrigation needs!
Jason Beckman cell: (208) 631-7789
Tony Browen cell: (208) 631-7782

812 W. Laurel Street
Caldwell, Idaho 83605

Office: 208.453.9155
Fax: 208.453.9158

IRRIGATION

Zimmatic
STRENGTH TO GROW ON

**When it comes time to upgrade your
irrigation system, call on Agri-Lines Irrigation.**

FRED BUTLER
SALES/DESIGN 208-880-5903
CERTIFIED TECHNICAL SERVICE PROVIDER
fredb@agri-lines.com

ADVERTISING

**YOUR AD HERE!
\$10.00 PER WEEK**

OWYHEE
AVALANCHE
337-4681

IRRIGATION

Agri-Lines
IRRIGATION INC.

AGRI-LINES IRRIGATION • (208) 722-5121
P.O. BOX 660 • 115 North 2nd Street
Parma, ID 83660
www.agri-lines.com

JEFF FORSBERG
SALES MANAGER (208)880-5904
jefff@agri-lines.com



The latest quilt created by Romona Andrus will be raffled Saturday at the Homedale Senior Center's annual holiday bazaar.

Seniors' quilt raffle concludes at bazaar

The final days of the Homedale Senior Center's annual quilt raffle are winding down as the organization's holiday bazaar approaches.

The bazaar takes place from 9 a.m. to 3 p.m. Saturday at the center, 224 W. Idaho Ave.

Raffle tickets for the quilt — once again created by Romona Andrus — are \$1 each and six for \$5. The winning ticket will be drawn during the bazaar.

Vending booths cost \$12 for a large table and \$6 for a smaller table. Call the center at (208) 337-3020 for more information.

The senior center hosted a packed house Wednesday for its annual Thanksgiving dinner. More than 100 guests, including Mayor Harold Wilson and acting police chief Sgt. Mike McFetridge, dined on turkey, mashed potatoes, yams and other holiday favorites.

One Accord provided mealtime music.

The senior center's holiday season continues during Tuesday's luncheon when Homedale Middle School sixth-graders will perform a Christmas show beginning at 11 a.m.

Three Creek School to show off new building

Three Creek School has more than the holiday season to celebrate this month.

The school will unveil its recently completed multipurpose room at an open house from noon to 3 p.m. on Tuesday, Dec. 14.

Tours of each room will be available and lunch will be served.

In March, Three Creek School District patrons overwhelmingly approved a \$240,000 bond measure to build the multipurpose room, which is aimed at also providing a gymnasium and storage.

The school follows its open house with the annual Christmas program at 6 p.m. on Friday, Dec. 17. It will be held inside the new multipurpose building.

The school will furnish turkey, drinks and rolls for the potluck with attendees asked to furnish side dishes.

The students will perform a play entitled "The Meaning of Christmas."

Teacher Marylin Boss said that this year's Christmas program will not feature a silent auction, as had been the case in past years.



Free Vehicle Removal

We pay \$100 Guaranteed. No title, No keys, No tires, No problem. We remove cars in any condition call DNA Auto Recycling (208)412-6159

Recycling fun fact for the day: the amount of steel recycled annually saves enough energy to power over 18 million homes for a year.

Area women invited to Advent Service

A non-denominational event for women and girls of all ages from the around the area will be held next Wednesday in Roswell.

The Sterry Memorial Presbyterian Church's annual Women's Advent Service will begin at 6:30 p.m. on Wednesday, Dec. 8, at the church, 28531 Hwy. 18. The service starts at 7 p.m.

For more information, call (208) 573-5271.

\$5 Discount for Owyhee Avalanche Readers!



IDAHO magazine is offering Owyhee Avalanche readers a \$5 discount off subscription rates!

Join Us on the Journey!

Name _____
Address _____
City _____ State _____ Zip _____
Phone (____) _____

Quantity	Item	Cost	Total with tax	Owyhee Avalanche Reader Price	TOTAL
	One-year subscription to IDAHO magazine (12 issues)	\$29.95	\$31.75	\$26.45	
	Two-year subscription to IDAHO magazine	\$27.00/yr.	\$57.24	\$51.94	
	Collect the whole set of IDAHO magazine <small>Includes the first 9 years + a subscription to the 10th year. That's 120 issues at \$140 off the cover price.</small>	\$280.00	\$296.80	\$291.50	

Visa or MC # _____ Expires _____
Cardholder's Name _____
Address _____
City _____ State _____ Zip _____
Phone (____) _____

Mail: P.O. Box 586 • Boise, ID 83701 | Online: www.idahomagazine.com | Phone: 208.336.0653

Santa Claus is coming to town!

Get ready for Homedale Chamber's annual "Homedale for the Holidays" Christmas Parade Saturday, December 11, 2010

Businesses who donate \$20 will have a coupon in their business name, on which readers will put their names and submit them back to the business.

The coupons are collected on Friday, and names are drawn from each business on Saturday. Drawing winners will receive a Holiday Turkey!

The idea behind this is to generate awareness of your business and create traffic through your door. A second chance entry is generated by Homedale Chamber of Commerce Members who choose to enter the holiday decoration contest. Last year, this was a lot of fun and a great success getting the city into the Spirit of the Holidays!

This is a great time to advertise a seasonal sale, Holiday Open House, or a Holiday Greeting.
Call Rob at 337-4681 for help getting an ad in this flier
rob@owyhee.com

Please plan on having a float in the parade!

Happy Holidays

Celebrating the Reason for the Season

Residents have included several gifts on their wish lists, but local "Santas" need only to select one item. Gifts may be gift wrapped and tagged with the number and item selected.

Gifts for residents may be dropped off at the Avalanche office, 19 E. Idaho Ave., between 8am-noon and 1pm-5pm Monday through Friday.

F1: Warm sweater, pants, socks, sweat shirt, night gown (small)
 F2: House slippers, pants, shirts, perfume, night gown (large)
 F3: Shoes (canvas w/no laces), bra (34B), sweater, baby blue blouse, summer dress to knee, pant set, slippers (slender/tall)
 F4: Pull-over sweater, socks, knee high nylons, pants (M), shirt (L)
 F5: Blouse's, pants (2x), slippers, socks
 F6: Shirts, puzzle books, socks (large)
 F7: Orthotic shoes, sweat shirts (2x)
 F8: Slipper socks, shirts (1x), slippers
 F9: Pull-over shirts, pants (1x), socks, night gown (1x)
 F10: socks, pants, night gown (large)
 F11: Cloth slippers, night gown (1x), pencils & pens
 F12: Hand lotion, Dove soap, slipper socks, marker to write on clothes, bird feeder (1x)
 F13: Candy, socks, pretty blouse, nuts, toy for child (large)
 F14: Socks, stretchy pull-over sweater, night gown (large)
 F15: Tread socks, crochet hook & yarn (not wool), night gown (1x)
 F16: Body pillow, adult mobile, butterflies
 F17: Perfume, women's polyester slacks, night gown (medium)
 F18: Big socks (sz 10), house shoes, undies (sz 9), night gown (large)
 F19: Artificial flowers, John Sanford books (2x)
 F20: Socks, slippers, pretty blouse, or anything (large)
 F21: Socks, lotion, night gown, stationary, slippers, pull-over t-shirt (large)
 F22: Socks, lotion, perfume, neck pillow, slippers, brush (large)

M1: Sweat pants, shirt, cologne (xlarge)
 M2: Deck of cards, dominos, t-shirt, guitar (acoustic), shoes, socks, cologne (4x)
 M3: Sweat pants, shirt, cologne (2x)
 M4: Stamp book, stamp hinge, candy, word puzzle book, sweat pants, shirt, cookies (3x)
 M5: Sweat pants, sweat shirt, socks (1x)
 M6: Anything BSU, warm coat (3xlarge)
 M7: Shirts, shoes, pants, flannel button-up (38/40 medium)
 M8: Sweat pants, shirt (medium)
 M9: Socks, puzzle books, sweats, t-shirt (large)
 M10: Socks, music CD, hat, electric razor, tread socks, sweat suit (large)

The annual Owyhee Avalanche Christmas gift project for the residents of Owyhee Health & Rehabilitation Center Homedale ends noon on Dec. 22nd

**Misc. Gift ideas:
 Throw blankets, pillows,
 music CDs (Oldies),
 perfume, cologne, socks,
 puzzles, memory games,
 snacks**



SANTA'S FAVORITE PLACE TO SHOP

No Interest 'till 2012

See store for details

Grandfather Clocks • Wall Clocks
Jewelry Armoires • Curios • China Cabinets
All Shapes & Sizes!

Hundreds of Gift Ideas!

CURIOS STARTING AT \$249

GRANDFATHER CLOCKS STARTING AT \$399

Area Rugs from \$99

Save on Coffee & End Groups

Wall Clocks

China \$995

4 Piece \$499

5 Piece \$599

Over 100 Assorted Dining Groups In Stock!

Largest selection of Sofa & Loveseats in the Treasure Valley!

Double Reclining Sofa On Sale!

Parma Furniture's Reclining Furniture SALE!

A Trainload of Lane Furniture just arrived!

PILLOWTOP MATTRESSES

\$449⁰⁰ TWIN SET

\$549⁰⁰ FULL SET

\$599⁰⁰ QUEEN SET

\$899⁰⁰ KING SET

Free Delivery • Free Removal of Old Set

SAVE ON BEDDING!

GUESTS COMING FOR THE HOLIDAYS? WE HAVE A GREAT SELECTION OF FUTONS & HIDE-A-BEDS ON SALE!

Complete Bedroom Sets On Sale!

Buy one of these Hi Leg Reclining Chairs Get a full size Lane Cedar Chest FREE!

\$599

MICROFIBER 10 COLORS IN STOCK \$699 PAIR!

CLOTH 8 COLORS IN STOCK \$799 PAIR!

STORAGE IN ARM \$799 PAIR!

LEATHER ROCKER RECLINER \$899 PAIR!

WALLSAVER ROCKER RECLINER LEATHER \$999 PAIR!

ONLY \$349 Solid Colors

FREE OTTOMAN WITH GLIDER 3 COLORS \$449

FREE OTTOMAN WITH GLIDER 3 COLORS \$379

FREE OTTOMAN WITH GLIDER 5 COLORS \$429

Chair & Ottoman \$299

Leather Chair & Ottoman \$349

ACCENT CHAIRS MANY IN STOCK! Similar to illus.

LIFT CHAIRS IN STOCK! From \$599

HUGE SELECTION OF BAR STOOLS

\$229 \$295 \$295

Whirlpool Range/Microwave Pairs

WFE301LVS Range WMH1163XVS Microwave Hood

Stainless Pair \$895

Black or White Pair \$849

ED5FGKWS

Stainless Side by Side Matching Refrigerator \$1099

ED5KVEKVB/Q White or Black Side by Side Matching Refrigerator \$899

Whirlpool SUPER CAPACITY

WTW57ESVW WED5700VW

\$529 EACH PIECE

INCLUDES: FREE DELIVERY, FREE DRYER VENT HOSE, FREE ELECTRICAL CORD AND FREE EXTENDED WARRANTY

DUET Whirlpool fabric care system

Wash up to 16 pairs of jeans in a single load

FREE DELIVERY!

Whirlpool Duet WFW9250VW WED9270XV

With Steam Dryer!

\$799 EACH PIECE

INCLUDES: FREE DELIVERY, FREE DRYER VENT HOSE, FREE ELECTRICAL CORD AND FREE EXTENDED WARRANTY

ED5KVEKVB/Q Whirlpool Side-by-Side Refrigerator \$899

WFE301LVS Whirlpool GLASSTOP RANGE \$549

OV1300XTVQ Whirlpool DISHWASHER \$449

etw4400wq eed4400wq

Pair Price: \$699

Includes Free Delivery, Free Dryer Vent Hose, Free Electrical Cord, NCCP #1023, 5 Year Limited Warranty, FREE 30 Day Money Back Guarantee

Parma Furniture Co.

"Like Having A Friend At The Factory"

108 3rd St. • Parma, Idaho

722-5158 • toll free: 888-722-0078

There's still time to CARPET FOR THE HOLIDAYS! CARPET & VINYL ON SALE!

12 BILLION BUYING POWER

We're proud of our association with the largest buying organization in the country, which brings you the combined purchasing power of thousands of retail stores nationwide. This huge buying power is passed along to our customers by means of lower prices every day on the finest name brand products in the world.



Rancher tours state to bolster cattle industry

Lynn Bachman readies for Pocatello leg of ag leadership program

Although he's a fifth-generation Owyheean, Lynn Bachman could be considered a trailblazer of sorts.

The Bruneau rancher is the first member of the Owyhee Cattlemen's Association to be accepted into the Leadership Idaho Agriculture program.

He began Class 31 of the program with a weeklong stay in Moscow last month.

The LIA program helps people involved in the agriculture industry enhance their leadership skills while achieving personal development and more awareness of agriculture.

The four-month course makes weeklong stops in four areas in the state where students will learn

about each region's agricultural niche as well as contemporary industries that benefit from the producers. The next week of classes begins Monday in Pocatello. January takes the group to Twin Falls, and the course wraps up in Boise in February with an in-depth look at how to interact with legislators.

"Because they bring such a wide variety of people (into the program), you get to meet a lot of different producers from different areas, and you make a lot of contacts in the program," Bachman said.

The son and grandson of former OCA presidents and brother of current OCA board member Kit and himself a future candidate

for the board of directors, L y n n B a c h m a n sees the four-month LIA course as a good training ground for furthering an industry that has become his family's legacy. Kit is scheduled to leave the board of directors prior to the conclusion of his six-year term because he is moving to Winnemucca, Nev., Lynn said.

Like many ranchers, 28-year-old Lynn Bachman admits that being a standard bearer for the cattle business will push him into an unfamiliar and admittedly uncomfortable realm. The LIA course helps with the outreach as



Lynn Bachman

participants hear from 60 different speakers and have their own speaking opportunities.

"I really do not enjoy public speaking, so this is a big stretch for me to even be doing it," Bachman said. "But you have to do it. There's not a lot of us younger generation around, so we either have to step up or let somebody else do it."

Bachman said cultivating the tools to help perpetuate the cattle industry was a big consideration when he looked into taking on the LIA challenge. Northwest Farm Credit Services and the Bruneau Boosters have teamed up to help sponsor Bachman in the program, which costs \$2,000 not including travel and lodging expenses.

He is looking for more sponsors to help with the costs. Call (208) 845-2125 for more information.

The son of Frank and Cindy Bachman, Lynn and his wife, Tiffany, celebrated their fifth wedding anniversary on Nov. 19. They have a 3-year-old daughter, Elsie, and a 2-year-old son, Jacob, who are part of the sixth generation of Bachmans in Owyhee County. Jacob is named for his great-great grandfather, who emigrated to Owyhee County from Bavaria in 1876 and homesteaded the Triangle Ranch. Lynn's great-grandfather, also named Lynn, served as OCA president in the mid-1940s.

In addition to working for his parents' 200-head cattle operation, Bachman and his wife own LT Cattle, which is comprised of about 30 cow/calf pairs.

— JPB

Santa's been working overtime...

...to bring you the best of the best this holiday season.

Look for the orange "fast forward" sticker when doing your holiday shopping.

Now you can buy TVs and desktop monitors that are technically advanced and engineered to be 30 percent more energy efficient than standard ENERGY STAR® qualified models. And it's a gift your family will enjoy for years to come!

For more energy efficient gift ideas visit www.idahopower.com/eegifts.

An IDACORP Company

Water report

The Bureau of Reclamation Web site showed that the Owyhee Reservoir was 16 percent full and that water was flowing in the Owyhee River above the reservoir at Rome, Ore., at a rate of 205 cubic feet per second. Water is flowing out at Nyssa, Ore. at a rate of 34 cubic feet per second. The reservoir held 124,796 acre-feet of water, 17 percent of capacity, on Monday.

The following statistics were gathered from the Natural Resources Conservation Service Web site at 11:00 a.m. Monday (Year-to-date precipitation is measured from Oct. 1 to Sept. 30.)

SNOTEL report, Owyhee County sensors

	Snow Equiv.	Snow Depth	Year-to-date Precip.	Previous day's temperature Max Min Avg		
	(measured in inches)			(measured in Fahrenheit)		
Mud Flat						
11/23	1.1	10.0	4.8	29.7	23.4	26.6
11/24	1.2	15.0	4.9	29.8	1.4	16.3
11/25	1.3	14.0	5.0	18.0	-6.5	6.6
11/26	1.4	12.0	5.1	20.5	-9.6	7.0
11/27	1.6	11.0	5.3	33.4	8.1	20.8
11/28	1.9	15.0	5.6	34.2	24.3	28.6
11/29	1.9	14.0	5.6	26.4	18.3	22.5
Reynolds Creek						
11/23	0.8	4.0	5.3	28.6	21.4	23.1
11/24	1.0	6.0	5.5	27.7	4.3	12.7
11/25	1.0	6.0	5.5	10.2	1.6	5.9
11/26	1.1	6.0	5.6	20.7	8.2	14.4
11/27	1.2	6.0	5.7	28.6	10.6	20.1
11/28	1.5	8.0	6.0	32.5	18.7	21.0
11/29	1.5	8.0	6.0	21.0	17.4	19.6
South Mountain						
11/23	1.9	16.0	8.8	26.4	20.5	22.8
11/24	2.1	18.0	9.1	22.6	3.4	12.6
11/25	2.1	16.0	9.2	11.8	3.0	6.4
11/26	2.4	14.0	9.3	26.6	7.2	17.4
11/27	2.5	13.0	9.5	37.6	24.1	31.8
11/28	3.0	17.0	10.1	36.0	21.0	28.8
11/29	3.1	19.0	10.2	21.0	15.6	18.3

* indicates invalid data received at sensor location

Weather

	H	L	Prec.
Nov. 23	45	33	.26
Nov. 24	33	11	.00
Nov. 25	26	9	.00
Nov. 26	28	8	.00
Nov. 27	32	14	.00
Nov. 28	32	23	.00
Nov. 29	39	20	.13

The Owyhee Avalanche
Your eye on Owyhee country

Call for subscription or advertising information: 337-4681

HHS girls' drop game to Melba

Local football stars played Saturday

Avalanche Sports

WEDNESDAY, DECEMBER 1, 2010

Expect no shortage of excitement from HHS boys

Long-range shooters lead core of returners from state tourney team

Nine months removed from one of the best state tournament showings in program history, the Homedale High School boys' basketball team hits the floor with designs on not missing a beat.

Moving the tempo up a notch may even be on the agenda for fifth-year coach Kenny Thomas's squad.

The Trojans capped a 15-11 season by trucking home the 3A Real Dairy Shootout consolation trophy in March, and six players from that squad return for the 2010-11 season, which started after deadline Tuesday at Nampa Christian.

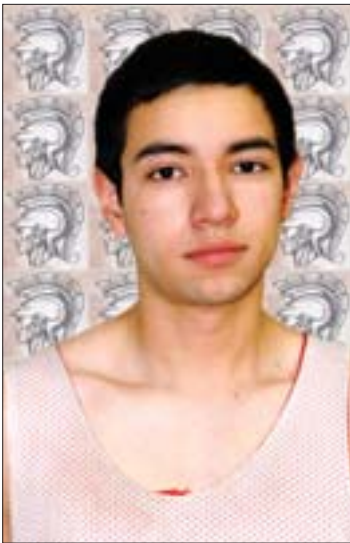
The team's leading scorer from a year ago, 5-foot-11 senior guard Walter Almaraz, may have a little more on his plate for his final high school campaign. He averaged 10.8 points per game last season and had the highest assists-per-game average among Homedale's returning troops at 2.1.

With the graduation of second-team All-3A Snake River Valley conference point guard Ryan Ryska, Almaraz may be in line for more floor responsibility. But Thomas alludes that he's ready for it, calling Almaraz a great shooter and ball handler.

Given Almaraz's sharp eye from the perimeter, though, Thomas may want to consider other options at the point. Zac Lowder, a 5-11 junior who made an impression as a junior varsity call-up at the guard spot in the last postseason, could be a resource.

"He has quick hands, a great first step and he's a good shooter," Thomas said.

Almaraz proved his value from the outside as a junior, nailing 41 three-point goals a year ago and accounting for one-third of the Trojans' production from beyond the arc. Kenny Esparza nailed 18 treys last year, and the 5-11 guard returns for his senior season with



Walter Almaraz

a reputation for scoring as well as pressuring opposing dribblers. He was the team's second-leading scorer with 10.3 points per game, and like Almaraz he averaged 1.5 steals per contest.

Trey Corta, a 6-foot wing, could be poised for a breakout season after leading the Trojans' football team to the 3A state playoffs in the fall. Thomas expects the junior, who scored eight points



Kenny Esparza

a game as a sophomore, to show off his athletic ability on both ends of the floor. He had 24 three-pointers last year, the third-highest total on the team behind Almaraz and Esparza, and he had a team-high 1.7 steals per game.

The likes of Corta, Almaraz and Esparza leads Thomas to tout team speed and an ability to score as strengths for the squad

this year.

With only four returners standing six feet or taller — Corta, 6-0 senior wing Mario Gonzalez, 6-1 senior wing Jonny Stacey and 6-3 senior post Trevor Gibson — Thomas is well aware the team will face a height disadvantage most nights.

As with the 2009-10 team, though, heart could be a big factor, especially in the case of Stacey and Gibson.

On Stacey, Thomas said: "He's a great hustle player that brings a great energy to the floor. He can get hot and score in spurts."

As for Gibson, the coach points out something anyone who watched the state tournament last year already knew: "He can bring an aggressive style to the court. I look for him to be a good rebounder."

Gibson averaged 3.2 boards per game last season, while Corta (5.3) and Esparza (5.0) paced the team. The trio will be looked upon to continue that effort this year

— See *Homedale*, page 16

Huskies knock down former rival for first time in five years

Marsing takes on Payette and Melba this week at home

The Marsing High School girls' basketball team downed former 2A Western Idaho Conference rival Parma 48-32 on Nov. 23 in a non-conference showing for the first time in five years.

The Lady Huskies (2-0 overall) were led by Ashley Hull, hitting seven of 10 free throws adding three assists and three rebounds. Hull finished with 16 points and one steal. Marsing's last win against the Panthers came in 2005 when they met in the district tournament.

"Last year in Parma it was a pretty emotional game," Marsing coach Tim Little said. "It was a positive experience for us. It was good to get that win against Parma and get that monkey off their back."

Andi Merritt finished with nine points, two steals and one rebound, she was 1-for-1 from the line. Rebecca Cossel added eight points for the Huskies with nine rebounds three steals and one assist. Andrea Rodriguez knocked down six points with five rebounds, two steals and one assist. Rodriguez was perfect from the line, going 4-for-4.

"We got up fairly quick and really held our own throughout the night," Little said. "In the second half we held them to 12 points. Our team goal is to hold oppo-



Ashley Hull

nents to 16 in the second half. Parma was very physical."

On the night, every player from Marsing who made it into the game knocked down points, Candy Leon had two points, two assists, three rebounds and three steals. Lacey Usabel finished with three points and one steal. Deidrie Briggs had two points and one rebound, and Kate Blackstock had two points and three rebounds.

"Candy has really impressed me. We are on the same page. She understands what we need to do as a team and how to set it up. She makes really good decisions," Little said. "She is a lot tougher than people give her credit for."

Overall, the Huskies had 15

turnovers throughout the game and went to the line 21 times and shot 70 percent on free throws. Little said he would like to see improvement on those numbers but as a team they are connecting well.

"Forty-eight points is a lot for us, and everybody that got in the game scored. If we can start playing defense like we are teaching then it allows us to really go out there and get some points," Little said. "The girls are trying to implement some pretty advanced techniques. We were pleased with the defensive performance."

Up next for the Huskies is Payette on Thursday night at home with the junior varsity B team starting at 4:45 p.m. and the varsity to follow the junior varsity A game. Marsing beat Payette (3-1 overall) in an overtime match 45-41 on Nov. 13.

Little said that while the team will focus on the game with Payette the main focus of the week would be the Huskies' game against Melba on Friday night, which is Marsing's 2A WIC opener. The Huskies take on the Mustangs (2-2 overall) with the junior varsity B starting at 4:45 and the varsity to follow both JV games.

"We will be focused on Melba for the week," Little said. "It is the first league game for us and on our home floor."

— JLZ



Andrea Rodriguez goes up for a quick layup against Parma's Kassity Plensky. Rodriguez finished with six points in the Huskies win.

Sports

Huskies volleyball coach selected as 2A Coach of the Year

Coming off their first trip to the 2A state tournament, the Marsing High School volleyball team can add one more accolade to its breakout season. Coach Loma Bittick was selected as the 2A State Coach of the Year.

“Well, it is definitely an honor to be recognized by your peers,” Bittick said. “It is kind of a fun end to the season. It was a little unexpected.”

During her ninth year at the helm, Bittick led the Huskies to an 11-12 overall record and 5-7 in 2A Western Idaho Conference play. Bittick won the 2A WIC coach of the year award in 2004.

“This is really a team effort,” Bittick said. “This is a little perk for me. All of us worked really hard all year long. It was a really good group of girls.”

Bittick also was selected by her Third District Coaches Association peers to lead the 2A team earlier this month at the District III senior all-star game. Bittick will be recognized with the other all-star coaches during the association’s banquet during the second week of December.

— JLZ



Marsing coach Loma Bittick speaks with varsity volleyball players during the 2A WIC District Tournament at Vallivue High School in October.



Homedale High School's Justine Calzacorta finds her path to the basket blocked by a swarm of Melba defenders.

Long scoring drought dooms Homedale girls

Mustangs hold Trojans to four points in final eight minutes

A subpar offensive performance overshadowed impressive defense in Homedale High School's second girls' basketball loss of the season.

Raven Kelly's steal of an inbounds pass and subsequent layup was the only basket for the Trojans (0-2) in the final 5½ minutes of a 35-28 non-conference setback against visiting Melba on Nov. 23.

Kelly's layup with 2 minutes, 15 seconds left in the game also was the final basket for either team on a night when Homedale struggled to sink shots while thwarting the Mustangs' offense on the other end.

“Defensively we corrected our issues from last week and did a nice job,” HHS coach Jeremy Chamberlain said. “We held their best player, Shayla Richardson, to seven points. Raven Kelly was on her defensively and did a great job. Our rebounding effort was also much improved.”

Aubrey Nash and Kylie Farwell collected five rebounds each, and Sydney Cornwall added four boards.

Melba held a one-point lead at halftime, and Homedale's defensive effort kept the game close through the third quarter.



Aubrey Nash

The Trojans pushed ahead, 21-20, when Deena Emry converted a steal with a jump shot 60 seconds before the end of the third quarter.

The lead was two points, 24-22, with three seconds left in the third when leading scorer Nash converted a three-point play after hitting a contested jump shot.

Nash finished with seven points, and Kelly added five on a night that saw Homedale shoot just 22 percent from the floor and commit 28 turnovers.

Stephanie Hylton led all scorers with 11 points, while Melba teammate Jody Hoagland added nine.

Melba35

Homedale28

The Homedale High School girls' were shutdown in a non-conference match up against the visiting Mustangs on Nov. 23. The Trojans' take on New Plymouth on Thursday at 7:30 p.m.

Trojan Winter Sports

BASKETBALL

Girls basketball

Varsity

Thursday, Dec. 2 at New Plymouth, 7:30 p.m.

Tuesday, Dec. 7 at Nampa Christian, 7:30 p.m.

Junior varsity A

Thursday, Dec. 2 at New Plymouth, 6 p.m.

Tuesday, Dec. 7 at Nampa Christian, 6 p.m.

Junior varsity B

Thursday, Dec. 2 at New Plymouth, 4:30 p.m.

Tuesday, Dec. 7 at Nampa Christian, 4:30 p.m.

Freshman

Wed., Dec. 1, home vs. Canyon Springs, 4:30 p.m.

Boys basketball

Junior varsity

Wednesday, Dec. 1, home vs. Canyon Springs, 7:30 p.m.

Friday, Dec. 3, home vs. Cole Valley Christian, 6 p.m.

Frosh-soph

Wednesday, Dec. 1, home vs. Canyon Springs, 6 p.m.

Friday, Dec. 3, home vs. Cole Valley Christian, 4:30 p.m.

WRESTLING

Wednesday, Dec. 8, tri-meet vs. Bishop Kelly and Middleton at Bishop Kelly H.S., Boise, 6 p.m.

NAPA AUTO PARTS

OWYHEE AUTO SUPPLY

337-4668

BOWEN PARKER DAY CPAs

BOISE - NAMPA - HOMEDALE

337-3271

Farm Bureau Insurance Company

337-4041

Phillips 66

Mattesons

337-4664

Four Points Construction

Decks - Windows

Carports - Shops

New & Remodels

337-4423

BAUER HEATING & COOLING

appointments 573-1788

se habla español 899-3428

The Owyhee Avalanche

337-4681

Owyhee Sand, Gravel & Concrete

337-5057

Tires LES SCHWAB

337-3474

PAUL'S

www.pauls.net

CAMPBELL TRACTOR CO

337-3142

HOMEDALE CHIROPRACTIC CENTER

J. Edward Perkins, Jr. D.C.

337-4900

Sports



Homedale Middle School eighth-grader Elise Shenk gets ready to finish off a fast break Nov. 23 against Fruitland in the girls' basketball A game.

Homedale Middle School girls' basketball ready for postseason

Teams start final week atop standings; title games here Dec. 9

Homedale Middle School's top eighth-grade girls' basketball team continues to steam toward the postseason tournament.

The Trojans, who are coached by Craig Pentecost, rebounded from their first loss of the season last week to maintain a one-game lead in the standings.

The final week of regular-season action began Tuesday and concludes Thursday with Homedale playing host to Parma.

HMS will also play host to the Snake River Valley conference eighth-grade tournament as well as both the eighth-grade and seventh-grade championship games next week.

The Trojans entered Tuesday's road game against McCain in Payette with a 7-1 record. They saw their season-opening six-game winning streak snapped by Weiser in a 36-28 loss in Washington County on Nov. 22.

Homedale rallied in the fourth quarter Nov. 23 to pick up its

winning ways with a 32-31 victory over visiting Fruitland. The Grizzlies grabbed a 22-21 lead after three quarters with a 6-0 run to close the period.

Homedale's eighth-grade B team was 1-6 heading into the final week of the regular season after dropping decisions to Weiser (22-6) and Fruitland (30-17) on Nov. 22-23.

Homedale's A squad will be a top contender in the eighth-grade tournament scheduled for Monday and next Wednesday at HMS. Two games will be played each day with action starting at 4:15 p.m. each day.

The championship games for both grade levels will be held in Homedale on Dec. 9. The seventh-grade title game tips


off at 4:15 p.m., and the eighth-grade game will follow about 90 minutes later.

Homedale's seventh-grade A squad remained atop the standings after running its season-opening winning streak to eight games last week. Coach Nick Schamber's club downed Weiser, 38-22, on Nov. 22 and took out Fruitland, 36-8, on Nov. 23.

The team concludes the regular season Thursday on the road against Parma before tackling the postseason tournament on Monday and next Wednesday in Parma.

The seventh-grade B squad entered the week in a three-way tie for the conference lead with Fruitland and Weiser. The Trojans started the week 6-2 after splitting games on Nov. 22 (a 28-14 win over Weiser) and Nov. 23 (a 22-12 loss to Fruitland).

You Deserve
THE BEST
We make sure you get it.





Reinke Pivots • Wheel Lines • PVC
Solid Set Rentals • Pump Rentals
Irripod Drag Lines

Ask us about Sprinkler Lube to extend the life of your gearboxes!

Rain For Rent

208-466-8929

1303 N. 20th Nampa, ID



MARSING HUSKIES

BASKETBALL

Girls' Basketball

Varsity
Thursday, Dec. 2, home vs. Payette, 7:30 p.m.
Friday, Dec. 3, home vs. Melba, 7:30 p.m.
Monday, Dec. 6, home vs. Parma, 7:30 p.m.

Junior varsity A
Thursday, Dec. 2, home vs. Payette, 6:15 p.m.
Friday, Dec. 3, home vs. Melba, 6:15 p.m.
Monday, Dec. 6, home vs. Parma, 6:15 p.m.

Junior varsity B
Thursday, Dec. 2, home vs. Payette, 4:45 p.m.
Friday, Dec. 3, home vs. Melba, 4:45 p.m.
Monday, Dec. 6, home vs. Parma, 4:45 p.m.

Boy's Basketball

Varsity
Monday, Dec. 6 at Parma, 7:30 p.m.

Junior varsity A
Monday, Dec. 6 at Parma, 6:15 p.m.

Junior varsity B
Monday, Dec. 6 at Parma, 4:45 p.m.

WRESTLING

Monday, Dec. 6 at Melba Jamboree, 6 p.m.
Friday, Dec. 10 at Calhoun Classic, Nyssa, Ore., 3 p.m.
Saturday, Dec. 11 at Calhoun Classic, Nyssa, Ore., 10 a.m.



The Owyhee Avalanche
337-4681



SHOWALTER CONSTRUCTION
CAN YOU DIG IT?
896-4331



Sports

County gridders play snowy field in Shrine All-Star game



Above from left: HHS senior Levi Elsberry, MHS senior Oscar Ceballos and HHS senior Benny Mello participated in the El Korah Shrine East-West All-Star Game on Saturday at Eagle High School. The three seniors were selected by the Shrine to participate in the game that hosted athletes from 42 schools throughout the Treasure Valley area. For more photos from the All-Star game visit, The Owyhee Avalanche Web site at www.owyheeavalanche.com.



Above: MHS senior Oscar Ceballos gets blocked by a Capital High School lineman during the East-West Shrine game. *Above right:* HHS senior Benny Mello helps protect the line. *At right:* HHS senior Levi Elsberry faces off against the West teams defense as the play falls apart in the backfield.

East beats West in double overtime to claim 11-man win

With the snow falling, a handful of the best football players from the area suited up for the District III 11-man East-West Shrine All-Star Game on Saturday in Eagle. The East, which included two Homedale High School standouts, prevailed 14-12 in double overtime.

The annual El Korah Shrine All-Star Game featured Trojans stars Levi Elsberry and Benny Mello for the East team. Both Elsberry and Mello saw time on offensive facing off against Marsing defensive lineman Oscar Ceballos on the West team.

“It was a rush coming out here to play. It is a little bittersweet because we didn’t get to play with our team,” Elsberry said. “We had fun, though, and it was good to get back into some pads and play again.”

The East was able to capitalize

on a two-point conversion in double overtime. Elsberry recorded one catch for 11 yards.

“It was fun. We really had a blast out there,” Mello said. “It was pretty awesome, and it is always good to win.”

Ceballos saw ample time on the defensive line as he faced off against other standout seniors at Thunder Stadium at Eagle High School.

“It was a neat experience. Basically I went from 2A to a 5A division. It was big and fast. I loved it,” Ceballos said. “I love the field, and I love football. This was a big jump. We threw a team together with a bunch of guys we met a week ago.”

Earlier in the day the eight-man game featured Rimrock seniors Francisco Garcia and Chance Pierce for the South squad. The South lost 22-6.

—JLZ



✓ Homedale: Boys open at home on Dec. 9 against Nampa Christian

From Page 13
with the departure of 2010 graduate Justin Harrell, who averaged 4.4 rebounds a night on the way to a District III senior all-star game selection.

The tallest players on the Trojans’ roster are all first-year varsity players, including

6-4 junior post/wing Brett Ryska and 6-3 senior posts Tanner Lair and Jordan Jarvis.

Thomas says a third senior — 5-10 post/wing Emilio Cuellar, who started on the football squad — could get the team’s blood flowing off the bench, too.

“He has great speed and he’s a quick leaper,” Thomas said. “He could provide an instant spark.”

Another senior, who like Cuellar, Lair and Jarvis, comes to basketball from the football field, is Benny Mello, a 6-0 post who the coach says will provide hustle.

Casey Christoffersen, a 5-11 junior guard, also transitions from the gridiron, and Thomas thinks he’ll bring his quick-reaction and hard-nosed defensive mentality to the hardwood.

—JPB

Looking back...

from the files of The Owyhee Avalanche and Owyhee Chronicle

25 years ago

December 4, 1985

Marsing’s Christmas parade to be bigger than ever

A special annual event for Owyhee County will occur in Marsing this Saturday. The Marsing Christmas Parade is slated for 11 a.m. and is expected to be bigger than ever. The theme is “They Work Hard for Their Money,”

According to parade organizer Gene Larsen, 49 entrants have signed up for the parade, and a total of around 55 is expected. Included on the list will be the National Guard displaying the colors, a Model A contingency, horse and mule groups, old and new cars, and lots of kids. “There are a lot of other entries, but they won’t tell me what they plan to present,” he laughed. “I’m asking everyone to take part, kids with puppies or rattlesnakes, anything.” Larsen said he considered the parade an Owyhee County affair and encouraged people from all over the area to attend. Grand Marshals of the Marsing Chamber-sponsored event will be Mr. and Mrs. Bert Pinson.

New owner sought for old Hot Springs Road bridge

The Owyhee County Commissioners are looking for someone who needs a bridge.

The old Hot Springs Road Bridge seven miles southeast of Bruneau will be replaced next summer by the county. In a survey by the National Park Service, the bridge was found to have historical significance and the commissioners are looking for some organization or individual who would like to relocate and preserve the structure, said H. Wayne Gibbs, consulting engineer for JUB Engineers, Inc.

The bridge is a low metal span built in a “pin and pony truss” design by the J. H. Forbes Company of Caldwell, one of the first significant bridge builders in the state, said Gibbs. The trusses are held together for the most part with bolts, and wooden planking covers the deck.

Last year, heavy flood waters on the Bruneau River peeled back the protective metal backing on the bridge abutments and damaged the decking.

Is your “home sweet home” a lemon?

There is a home you would like to buy. Does the sheetrock have moisture in it? Is the foundation capable of supporting you for years to come? Do you like the sound of rain, inside the house?

HouseMasters of America is a nationwide network of private inspectors who help insure your dream home won’t be a nightmare when you buy it. Steven Pierson of Marsing is a HouseMaster inspector for southwestern Idaho, the only inspection company in the Gem State.

The inspections run an average of \$150 and literally start at the top. Pierson inspects the shingles and the various vent pipes for wear. He said 90% of roof leaks can be attributed to holes in the flashing — it should be checked and sealed every year if possible. The chimney is also checked. The mortar may need “pointing” or filling; a leak in the mortar can allow fire or smoke into other parts of the house.

District elections result in incumbency removals

Several maintenance district elections were held on Monday in the Marsing-Homedale area.

Cyril Lootens, the incumbent highway commissioner for the Gem Highway District Precinct 1, was reelected with a commanding lead of 116 over Everette Larsen with 12 votes. The term will run for four years and includes the Marsing area north of Highway 55. In Precinct 2, Glenn Salmeier, also an incumbent, ran unopposed for the seat, according to secretary-treasurer Rodney Hawes. He received 108 votes.

In the Marsing-Homedale Cemetery Maintenance District, Jay Hall of Opaline was elected with 121 votes in Marsing and 60 votes in Homedale. Several write-ins received votes, said Hawes. The district runs from Givens Hot Springs to the Oregon line.

In the Homedale Highway District, write-in Fred Demshar beat incumbent Don Townsend by a vote of 44-24. Townsend, initially ran unopposed for the District 2, four-year position, according to secretary-treasurer Teri Uria.

50 years ago

December 1, 1960

ACS elects 1961 officers, many ballots cast

The tabulation of the ballots cast in the recently completed mail election for Agricultural Stabilization and Conservation Community Committeemen for 1961 reflects a great number of voters returning their marked ballots than in past years, according to Emmett M. Dent.

Elected to serve during 1961 were:

Homedale-Marsing. Ray Mansisor, chairman; Elmer C. Barlow, vice chairman; Donald Dobbin, member; James Kubosumi, first alternate; W. E. Pickrel, second alternate. Murphy-Oreana. Roy M. Hoagland, chairman; C. J. Cotner, vice chairman; Henry Brandau, member; Earl E. Cummings, first alternate; George Bass, second alternate.

Grand View-Bruneau. Joe Hawes, chairman; Don Davis, vice chairman; Max Collett, member; Robert Messenger, first alternate, Oscar Field, second alternate.

Firemen put out blaze Friday

Homedale volunteer firemen were called last Friday when a short in an electric stove occurred and caused minor damage to a house located on the Aldrich property just across the bridge east of town.

Walls were scorched before firemen were able to carry the stove outside.

Owyhee Neighbors elect new officers

New officers were elected for the coming year, when members of the Owyhee Neighbors met at the home of Mrs. Akichika, November 25 for their last meeting of the year.

Officers elected were Grace Yamamoto, president; Michiye Nishihara, vice president; Tae Takasugi, secretary; Bette Uda, treasurer; Kathy Miyasako, publicity chairman; Cleo Kubosumi, historian; and Katie Hirai, Yosie Yamada and Mabel Yasuda, social chairmen.

Tentative plans have been made for a potluck Christmas party to be held December 18.

Hostesses for the evening were Mrs. Bette Uda and Mrs. Chivo Nagasaka.

Succor Crik Sam Sez: “These chilly mornin’s makes me wish somebody would give me some of that permanent anti-freeze for Christmas.”

Homedale locals

Mr. and Mrs. Richard Eismann and family were guests of her sister, Mrs. John Bicandi and family of Marsing, for dinner Thursday.

The Calvin Fuller family spent Thursday with Mrs. Susie Young and were guests for Thanksgiving dinner.

Mr. and Mrs. Marion Vance and family had dinner in Caldwell Sunday and later visited Mr. and Mrs. Pete Rathbone in Marsing.

Mrs. Marjorie Vance is spending several days with her daughter, Mrs. Richard Marks in Boise this week. Mrs. Marks came after her mother Monday.

Mr. and Mrs. Chuck Yost entertained her parents, Mr. and Mrs. Ora Friel and her sister, Wanda of Boise, at dinner Thanksgiving day.

Mrs. Wilma Edick was dismissed from the hospital Sunday and is at home recuperating from major surgery she underwent last Tuesday.

Ernest Edick, Phillip and Carol Jean were guests of Mr. and Mrs. John Fisher Jr., for Thanksgiving dinner.

Mrs. Earl Boyd and three sons and a daughter, Mary Dell Boyd of Marsing, visited friends and former neighbors in central Oregon over the Thanksgiving holiday.

Mrs. Glen Selders is quite ill from an infected tooth and has been confined to her bed for several days.

Mrs. Frieda Caler, her two grandchildren and Donna Caler visited the Bill Strack family Sunday.

Mr. and Mrs. C. H. Eismann of Caldwell and Mrs. Genevieve Hale and Barbara of Marsing were visitors at the Richard Eismann home on Sunday.

143 years ago

December 7, 1867

SINGING. As will be seen by the following proceedings, our people are making a move in the right direction. A social singing coterie is a good thing at any time, specially is it commendable in the winter, being a pleasant and instructive pastime for the long evenings:

Silver City, L. T., December 1, 1867

A few of the ladies and gentlemen met at Oro Fino Hall on the date above written for the purpose of organizing a choir of sacred music. The meeting was organized by calling Mr. P. C. Learned to the Chair and electing C. M. Hays Secretary. A series of Articles were proposed to the meeting by Mr. Vass, and, on motion, were adopted.

Article 1st names the organization “The Owyhee Choir.”

The officers of the Choir elected are: Geo. Vass, President; W. H. Vanslyke, Vice President; C. M. Hays, Secretary; Miss R. L. Dye, Treasurer.

Committee to draft Rules and Regulations to report next Sunday evening, Dec. 8th, were Messrs. Purdy, Vass, Vanslyke and Learned.

GOOD PAY. Several tuns of ore from the Woodstock mine have just been crushed in the N. Y & O. F. Co’s mill, on Sinker Creek, from which the amalgamator, Mr. Kennelly, has obtained the following result: The first-class ore turned out \$367 per tun, and the whole amount crushed averaged a little above \$147 per tun.

Seventeen tuns of refuse ore from the Surplus Oro Fino have recently been worked in the same mill, yielding under the skillful treatment of Mr. Kennelly the snug little sum of \$327.15. We are informed that previous to this working the same ore never paid more than \$8 per tun.

INDIAN SCARE IN FLINT. On Tuesday night, as G. W. Hill and two others were on their way from Jordan Valley to Flint District, with two wagons loaded with hay, they were encamped near the Minear Ranch on Big Boulder. Soon after they turned their teams out they spotted a fire some distance down the creek, and concluding at once that it must be Indians, Mr. Hill and his nephew took their guns and went down to scout. Arriving near the camp they discovered two Indians on the side of the mountain, above the camp, and several others around the fire. Mr. H. fired twice into the party with his Spencer, when they set up a war-hoop and he retreated to his own camp. Mr. Fife, one of the party, was dispatched to Flint for reinforcement, while the two Messrs. Hill gathered up the cattle as hurriedly as possible and corralled them at Minear’s Ranch; after which they fortified themselves in the house preparatory to receiving an attack. About a dozen citizens from Flint rushed immediately to the scene of conflict on hearing of the attack, arriving simultaneously with a detachment of soldiers from Camp Three Forks, who reported that their Indian scouts had been fired on by wild Indians while quietly engaged in camp duty. A mutual explanation ensued, the soldiers went again into camp, the teamsters to bed, and the citizens of Flint returned to their homes, all glad that nobody was hurt and that it was all a mistake.

OWYHEE EXCHANGE. Messrs. Chase and Brooker have fitted up in magnificent style the splendid building on the corner of Washington and Second Streets, formerly known as the Challenge Saloon. They have three of the best and most elegant billiard tables that could be purchased in San Francisco. The walls are decorated with numerous chaste and beautiful pictures, the bar furnished with the best liquors and cigars, and a comfortable Club Room is attached to the main saloon. Taken altogether, the entire arrangement wears an air of ease and comfort rarely equaled and not excelled in the Territory. The boys are fine, sociable fellows and cause their visitors to feel perfectly at home. They put the balls in motion last Wednesday morning and furnished liquor, cigars and billiards free all day and night. It is called the Owyhee Exchange, having been dedicated and christened on Tuesday evening last by Bacchus and Terpsichore.

Commentary

Baxter Black, DVM



On the edge of common sense The head catch wreck

As many of you regular readers might guess, people tell me their stories. Stories about wrecks; horse wrecks, cow wrecks, sheep wrecks, dog wrecks, financial wrecks, Tyrannosaurus wrecks, any kind of wreck you can think of! 'Cause all these wrecks couldn't happen to one guy!

I met JW in Tennessee. He's a regular reader of my column and thought his story would fit. It seems he was helping a neighbor with his small pasture operation. His neighbor was a successful contractor, a good welder and builder but a bit of a novice in the wonderful world of cows. When he put his cattle workin' facilities together at his place, it was a work of art!

The corral was built with drill stem set in concrete, clips, cable, and an eye for function. His long single-loading alley was lined with treated 2x6's bolted to the upright pipe stem and had a sliding gate at each end! He called the county agent to get proper dimensions for alleys and gates. His persnickityness and attention to detail could be compared to a watchmaker or a farmer rebuilding antique tractors!

JW and Dag, we'll call him, got the bunch of 600-pound heifers gathered into the corral. They tied their horses and set a 50-gallon drum beside the chute to act as a table for their instruments and medicants. JW took a close look at the chute. It wasn't a squeeze chute, it was a scissor-type head-catch, which Dag had tied to two big, round steel posts set in cement. "Pretty stout," JW was thinkin', til he noticed the head-catch was secured to the post by four pieces of 12/2 Romex that Dag had obviously scavenged from one of his construction jobs.

That would be like tying the Titanic to the dock with a tarp rubber and two pieces of baler twine! JW questioned Dag about the Romex, and Dag swore it would be OK. He had earlier used it to tie his side mirror to the truck when it broke off. Worked fine, he said.

The first two critters came through fine. "See," said Dag, "It works fine."

In came No. 3. She hit the gate, locked it, pulled back once, then lunged forward like a fullback going over the right tackle! The Romex shredded, and the head-gate popped free! It was so heavy it pulled her down and flipped her into a full cartwheel! The cartwheel was followed by a double sideways flop, drop, drag and slide that left the calf in the bar ditch alongside the state highway!

JW watched several cars go by, each one staring and then punching in the number of every animal rights group in North America!

JW and Dag managed to get the beast upright, where she crawled up on the road, dragging the head catch with her, as well as her two assailants! Dag finally managed to reach the release latch. The catch fell off, and the heifer stumbled down the middle of the road on her way to Kentucky!

As they were dragging the head-catch off the road JW said, "That was great! I only wish Baxter was here!"

— Visit Baxter Black's Web site at www.baxterblack.com for more features, merchandise and his latest release, at double DVD entitled "Baxter Black Live".

Wayne Cornell

Not important ... *but possibly of interest*

The elocution of Ella

Ella, our youngest granddaughter, won't be three until January. But she gives new meaning to the term "irrepressible."

Ella got off to a slower start on talking than her older sister Grace. When other kids her age were speaking understandable groups of words, Ella was speaking gibberish. But since she got things figured out, she has been a seemingly never-ending source of entertainment for her Grandma and Grandpa. One of the benefits of retirement is that Ella spends most of the days of the workweek with us. And most of the time when she's awake, she's talking.

Although her skill in putting words together is amazing, Ella does have some areas she still needs to work on. For instance, in Ella-speak, all "Ls" are pronounced as "Ys." So, whenever Ella talks about her fondness for a specific kind of candy, it comes out as, "I Yike Yicorice." Or she might advise us to "Yook at the pretty yeyow fyowers."

But Ella's real talent is her ability pull adult phrases out of nowhere.

One of Ella's favorite sayings is "What the heck?" Or she will fall backwards onto a cushion while yelling "Goin' down!"

There was the time when her Grandmother gave her a raw green bean to taste, she took a bite, then walked over and held the bean out to me. "Here Grandpa," she said. "I don't yike this very well. You eat it."

The other day Sara and I needed to run an errand in town

and were supposed to meet someone at noon. We had to take Ella along with us. Before leaving, Sara told her to go to the bathroom. So, as the clock minute hand moved toward 12 o'clock, Ella was happy just sitting on the potty chatting with Grandma. Finally Sara said, "Ella, hurry up. We have to go meet somebody."

Ella looked at Sara. "It's no big deal, Grandma," she said calmly. "Get over it." If that advice was given to an adult by a teenager, there might be repercussions. But how can you get mad at an almost-three-year-old who says that?

Then there was the doll incident:

One day Ella went to the store with us. Sara thought it would be a good chance to try to get an idea what Ella wants Santa to bring her for Christmas. We spent considerable time in the toy department. And naturally, Ella wanted just about every toy she encountered.

We ended up in the doll section. Sara picked up a doll with a darker complexion than most of the other dolls. I guess today it would be referred to as a "a doll of color."

"Look Ella," Grandma said. "How about this doll?"

Ella gazed at the doll for a moment. "That's a chocoyate one, Grandma," she solemnly said. "Put it back."

As I noted earlier, Ella still has a few pronunciation problems. But I'm sure the "Ys" for "Ls" will disappear as she gets a little older. I'm trying to convince myself that's a good thing. Frankly, it doesn't get much better than Ella looking at me and saying, "Grandpa, I yove you."



Sen. Mike Crapo

From Washington Trade agreement helps protect Idaho industry, maintains jobs



To find a model of ingenuity and resilience, visit an Idaho sawmill. Idaho's forest products industry, interwoven into the region's history and central to the development of the area, has experienced significant challenges in recent years with the downturn in the housing market and economy, increased transportation and energy costs, raw material availability and unfair trade practices. Facing these tests, Idaho sawmills and forest products workers have increased efficiency and innovation. Advanced technology and process control have enabled lumber producers to remain competitive, increase the value extracted from each log and target products to best meet customer needs. As lumber producers and workers continue to advance, every effort must be made to ensure a just market, and ensuring our nation's trade partners honor their commitments is critical to this effort.

Recently, United States Trade Representative Ronald Kirk initiated consultations with Canada under the 2006 Softwood Lumber Agreement (SLA) regarding the unfair under-pricing of timber harvested from public lands in British Columbia (BC). The U.S. entered into the SLA with Canada to settle disputes regarding Canada's subsidization of the price of timber sold to softwood lumber producers that was negatively impacting U.S. lumber producers and workers. After years of negotiations, achieving the SLA was an important step toward ensuring a fair and open softwood lumber market. However, the effectiveness of any trade agreement depends on trade partners respecting the terms of the agreement and timely resolution of violations.

Canada has been found to have violated the terms of the agreement, and the Bush and Obama administrations have taken necessary steps to ensure that the agreement is upheld. The concern in this case is with the substantial increase of

the proportion of timber harvested from public lands in BC being designated as low-grade timber and sold to sawmills for the low price of 25 cents per cubic meter, saturating U.S. lumber markets with subsidized, underpriced timber. Consultations are an initial step in trying to resolve the issue and reach a mutually favorable resolution through an exchange of views between the U.S. and Canada. If unresolved within 40 days, formal adjudication may commence to settle the issue. As a member of the Senate Finance Committee, with jurisdiction over trade agreements, I have actively pressed for the timely resolution of this dispute to protect Idaho jobs. I welcome the consultations and commend the administration for taking this important first step.

Even with challenges, Idaho's forest products industry remains an essential part of the local and national economy. Between 2007 and 2008, the Inland Northwest Forest Products Research Consortium found that the majority of Idaho's wood and paper product manufacturers experienced decreased profits, curtailed production and reduced employment. Despite significant hits, for 2008, Idaho's primary wood and paper products' sales were nearly \$1.7 billion, and forest industry employment was estimated at 13,500.

Non-compliance with the SLA must be curbed to ensure a just market for the lumber industry in Idaho and across the nation. In a fair market, American producers can compete with the best in the world, but we must not allow foreign governments to tip the scales in their own favor. The United States must continue to use every possible tool to ensure the enforcement of the SLA and defend Idaho jobs and the livelihoods of American families. Trade agreements and rules must be upheld to better ensure Idaho and American softwood lumber companies and workers can compete successfully.

Commentary

Financial management

Stretch hard-earned thousands farther with a used car

Dear Dave,
I'm 24, and I'm finishing up college. I've been driving an old, used car for a while now, and I'm thinking about getting a new one. I've managed to save up about \$30,000 from my jobs, but every time I go to a car dealer they want me to finance a new car instead of paying cash for one. What do you think I should do?

— Devon



enough to scrape up \$30,000 over the past few years. You don't need to throw a huge chunk of that into something that's going to go down in value like a rock. New cars lose 60 percent of their value in the first four years.

A \$28,000 car would be worth around \$11,000 after that period of time. That's not what I call a smart investment.

You don't need a brand-new car, Devon. Once you've got a million dollars in the bank, then you can go out and buy a new

car. For now, you need to stick with good, used, low-mileage vehicles that are about three or four years old.

If I were in your shoes and had your budget, I'd shop around and pay cash for a cool little \$10,000 car.

You can get a great automobile for that kind of money, plus you'll still have the majority of your savings sitting there!

— Dave

Dear Dave,
Should I take \$20,000 out of my thrift savings account to use as a down payment on an investment property? My payment would be \$1,200 a month, and I could lease it for \$1,500 a month. It will also give me a better return than if I left it in my savings account,

even with all the penalties. What do you think?

— Cecilia

Dear Cecilia,
So, you want to cash out retirement, and take a penalty, to buy an investment property. And on top of that you're going to take on debt, too? This is like combining two dumb things into one big mess. I don't think so!

I understand the allure of real estate. I love real estate. But it's pretty obvious you've never been a landlord. Bringing in \$1,500 and paying out \$1,200 sounds good to you, but there's also a lot of risk involved, and that's something you haven't figured into the equation. Sometimes you have places that just sit there empty. Other times you have renters who

don't pay, things that need fixing, or people who just tear stuff up.

The idea that you're going to make a bunch of money off this situation is pure fantasy. Don't go there!

— Dave

— Dave Ramsey is author of *The Total Money Makeover*. He also is the host of *The Dave Ramsey Show* that airs at 6 p.m. daily on the Fox Business Channel. He also has a radio call-in show. You can find tools to help with finances or previous columns at Davesays.org. For more financial advice, visit the Web site or call (888) 22-PEACE. Have a question for Dave? Send correspondence to syndication@daveramsey.com or write Dave Says, 1749 Mallory Lane, Brentwood, TN 37027

Accuracy in Media

Progressives increase their power over President Obama

by Cliff Kincaid

While the Democratic Party suffered a bloodbath on Nov. 2, the progressives who basically run the party and control President Obama came out of the elections stronger than ever. They will keep the political pressure on Obama to pursue a far-left agenda, with the implied threat that if he doesn't comply, he will have a 2012 presidential primary election challenger. The progressives know Obama's secrets, having backed him since he joined with them in the Chicago New Party, a means by which they moved the Democratic Party to the left.

Glenn Beck on Fox News says that a few progressives managed to survive somehow. In fact, Karen Dolan of the far-left Institute for Policy Studies proudly notes that "the Congressional Progressive Caucus, the largest caucus in the House Democratic Caucus at over 80 members, emerged virtually unscathed, losing only three members" — Reps. Alan Grayson (Fla.), John Hall (N.Y.) and Phil Hare (Ill.). By contrast, as noted by Jim Dean of Democracy of America, only 47 percent of the so-called conservative Blue Dog Democrats won their races.

All of this means that the Democratic Party has moved further to the left, which is exactly where Obama wants it to go. The electoral "shellacking" he talks about came mostly at the expense of the moderate and conservative elements of the party. He never cared about them.

The progressive victories virtually guarantee that Obama, despite his conciliatory talk at his post-election news conference, will not compromise with the House Republican majority. He will instead count on his base and their media allies to put pressure on the GOP to compromise with their leftist agenda or else be branded as obstructionists.

The lesson is not just that the Democratic Party in the House has become more "liberal," as media pundits like to say, but more "progressive" in a far-left sense. The new head of the Congressional Progressive Caucus is expected to be Rep. Keith Ellison, the leftist Muslim Democrat from

Minnesota. He has already sent a letter appealing for the post. The caucus election is scheduled for today.

Some of the pundits are missing the point completely. Democratic Party operative and Fox News contributor Joe Trippi says that the "GOP sweep of at least 60 seats in the House removed some of the most moderate Democrats and replaced them with more conservative, and in many cases, Tea Party Republicans. This means that Barack Obama will have to try to compromise and solve some very tough problems with a more polarized and divided House."

But while the Republicans are more conservative, the Democrats are far more liberal. If Obama compromises with the Republicans, he risks the wrath of the more powerful Progressive Caucus, which is where his heart lies anyway. For example, Obama has long had a close personal relationship with Rep. Barbara Lee (D-Calif.), the pro-Castro Oakland Democrat who has headed the Progressive Caucus and the Black Caucus and was once a secret member of the Communist Party spin-off, the Committees of Correspondence for Democracy and Socialism.

On the surface, it does look bad for the president. Making the threat against Obama overt, Rob Kall at the left-wing Web site OpEdNews.com declared, "Obama deserves to be primaried and replaced. He has failed as a leader in so many ways — horrible appointees, weak, inadequate responses to crises, inability to handle the military. It is not a matter of giving him enough time. He failed to deliver on his campaign promises, not just the issue or action kinds, but most important, as a leader. He has shown himself to be weak, ineffective, with poor judgments and inadequate strength to do the job."

Such threats are possible because of the far-left drift of the Democratic Party, which has become more pronounced with the Nov. 2 results. But these threats are just for show.

If Obama is somehow forced to accept variations of Republican policies that are perceived to be surrender on

his part, he could still come out a winner. As Sam Webb of the Communist Party USA puts it, "Don't be surprised when many who voted for the Republicans become disillusioned with their policies, and on this ground a bigger and broader people's movement will emerge."

So this may be the game plan: create the impression that the Republicans are really in charge and hold them responsible for whatever results from Washington policy-making. They seem to be assuming that budget cuts of some kind will be enacted, leading to the spectacle of the GOP being accused of putting "profits over people," as union organizers and left-wing activists take to the streets in protest. And Obama in his Nov. 3 news conference already set the Republicans up, blaming them in advance for proposing to alter a health care plan that he says provides real benefits to real people.

You can see it now: Republicans being blamed in the media for taking benefits away from people with real needs. The GOP will be depicted as the front men for greedy insurance companies.

The irony is that conservative sentiment is at record highs. Exit polls from the 2010 elections showed that 41 percent of voters identified themselves as conservatives, with only 20 percent calling themselves liberals and 39 percent identifying as moderates. That compares to only 32 percent calling themselves conservative in the exit polls from the 2006 midterm elections and 34 percent conservative in 2008.

While conservatives have always had to go up against a much smaller number of liberals, it is the influence of the progressives and their strategic location — in such power centers as the media and academia — that gives them the strategic advantage. Now, with their power in the Democratic Party more concentrated than ever, they are relishing a fight they think they can win. Obama is one of them, and they know it.

— Cliff Kincaid is the Editor of *Accuracy in Media*, and can be contacted at cliff.kincaid@aim.org.

*Let your voice be heard in the Avalanche.
Write a letter to the editor*

Public notices

SYNOPSIS OF OWYHEE COUNTY COMMISSIONER MINUTES
NOVEMBER 16TH 2010
Indigent & Charity cases were reviewed.
A hearing was held on the Order to Show Cause for Tom Wilke on Alleged Zoning Violations.
The complete minutes can be viewed online at owyheecounty.net or in the Clerk’ office.
12/1/10

SUMMARY OF ORDINANCE ADOPTING THE OWYHEE COUNTY CODE
ORDINANCE NO. 10-01
1. Name of County: Owyhee County, Idaho.

2. Formal identification or citation number of Ordinance: Ordinance No. 10-01

3. Descriptive title: Ordinance Adopting the Owyhee County Code of Owyhee County, Idaho.

4. Summary of principal provisions of Ordinance: This is an Ordinance Adopting the Owyhee County Code. All ordinances of a general nature are included in this official county code together with changes made by the Owyhee County Commissioners to such ordinances and ordinances amending, altering, adding or deleting provisions of the official county code.

5. Effective date and availability of text: This ordinance shall be in full force and effect on the date of publication of this Summary in the Owyhee Avalanche. The full text of the Ordinance No. 10-01 is available at the Office of the Clerk of the Owyhee County Board of Commissioners, located in Owyhee County Courthouse, Idaho State Highway 78, Murphy, Idaho, 8:30 a.m. to Noon and 1 :00 p.m. to 5:00 p.m., Monday through Friday, excluding holidays.

THE ABOVE SUMMARY IS APPROVED THIS 23rd DAY OF NOVEMBER, 2010.

BOARD OF COUNTY COMMISSIONERS, OWYHEE COUNTY, IDAHO
/s/Jerry Hoagland, Chairman
/s/Richard Freund, Member
/s/George Hyer, Member
Attest: /s/Charlotte Sherburn, Clerk

CLERK’S CERTIFICATION
I hereby certify, pursuant to Idaho Code 31-715A(3), that the above Summary is a true and complete Summary of Owyhee County Ordinance No. 10-01, Ordinance Adopting the Owyhee County Code, dated November 23, 2010, and this Summary is true and complete and provides adequate notice to the public of the enactment of the ordinance and its provisions. The fall and complete text of the ordinance is available for review in the Office of the Clerk of the Owyhee County Board of Commissioners, located in the Owyhee County Courthouse, State Highway 78, Murphy, Idaho, 8:30 a.m. to Noon and 1:00 p.m. to 5:00 p.m., Monday through Friday, excluding holidays.
CERTIFIED this 23rd day of November, 2010
/s/Charlotte Sherburn, Clerk
Publish: Owyhee Avalanche
Date: December 1, 2010
12/1/10

REQUEST FOR BID OF OWYHEE COUNTY PSAP 911 SYSTEM
Owyhee County will accept sealed bids addressed to: Owyhee County Sheriff, E9-1-1 SYSTEM BID RESPONSE – Owyhee

County, PO Box 128, Murphy, ID 83650, 208-459-2421, no later than close of business at 5:00 pm February 14, 2011.

Schedule of events is as follows: RFB issue December 1, 2010. Questions submitted no later than close of business February 7, 2011. RFB response deadline close of business, February 14, 2011. Opening of bids 10:00 am February 15, 2011. Contract awarded no later than March 15, 2011. Installation/cut over to be determined. Prices quoted should represent a fully installed and tested system in a turnkey fashion. Complete RFB is available on the Owyhee County Website at http://owyheecounty.net
12/1,8/10

NOTICE OF ASSESSMENT DUE

NOTICE IS HEREBY GIVEN that assessments levied by the Gem Irrigation District in 2010, for 2011, by virtue of the public notice given by the Bureau of Reclamation under Owyhee Project contract requires that payment is due in full before water will be delivered.

This assessment will become delinquent and subject to a penalty and interest unless paid before 5:00 p.m., December 20, 2010. Provided that the first one-half of said assessment may be paid on or before December 20, 2010 and the remainder, second one-half on or before March 15, 2011, or the delivery of said water will be withheld.

Payment of said assessment may be made to the Gem Irrigation District, in the City of Homedale, County of Owyhee, Idaho, during office hours of any business day or mailed to: PO Box 67, Homedale, ID 83628

Connie Chadez
Secretary/Treasurer
Gem Irrigation District
11/24;12/01/10

AMENDED NOTICE OF PETITION AND HEARING
Case No. CV 2010 1730 H
IN THE DISTRICT COURT OF THE THIRD JUDICIAL DISTRICT
OF THE STATE OF IDAHO,
IN AND FOR THE COUNTY OF OWYHEE

IN THE MATTER OF THE ESTATE OF: ALTAM. MEYERS, Deceased.

1. Notice is hereby given that on October 14, 2010, Margaret P. White, Deputy Attorney General, filed a petition for formal adjudication of intestacy and formal appointment of personal representative.
2. A copy of the petition accompanies this Notice.
3. The petition has been set for hearing in this Court at Homedale, Idaho, on January 19, 2011, at 11:00 o’clock, a.m. via telephonic conference to be initiated by the court.
DATED this 16th day of November, 2010.
/s/MARGARET P. WHITE, Deputy Attorney General
LAWRENCE G. WASDEN, ATTORNEY GENERAL, STATE OF IDAHO
S. KAY CHRISTENSEN, ISB No. 3101, CHIEF, CONTRACTS AND ADMINISTRATIVE LAW DIVISION

MARGARET P. WHITE, Deputy Attorney General, 3276 Elder, Ste. B, P.O. Box 83720, Boise, Idaho 83720-0009 Telephone: (208) 332-7961 Fax (208) 334-6515 ISB No. 2173 whitem@dhw.idaho.gov
11/24;12/1,8/10

NOTICE

Pursuant to Idaho Code 25-2301, the State Brand inspector is holding one red/white Longhorn steer calf approx 400 lbs, found 2 miles south of Homedale on Hwy 95. He will be sold at Treasure Valley Livestock Auction on Friday 12/3/10. May be claimed with proof of ownership and paying all expenses. 459-4231
11/24;12/1/10

NOTICE

Notice for sale for non-payment of rent and other charges.

Unit(s) E-8 and I-7. William Cayford, 2274 Northside Rd, Homedale, ID 83628. Contents of Unit E-8: TV, baby bed and misc. household items. Contents of Unit I-7: Misc. household items.

Unit(s) F-7. Brenda Houser, 505 S 2nd E, Homedale, ID 83628. Contents of Unit F-7: Tools, welder, TV, misc. household items.

Unit(s) F-32. Leah Broadbent, PO Box 508, Union, OR 97883. Contents of Unit F-32: Window air conditioner and misc. household items.

Bids are accepted at “Hwy 95 Self Storage” 3685 Hwy 95, Homedale Idaho on 12-11-2010 between the hours of 9:00 AM and 1:00 PM in accordance with Idaho Code Section 55-2306.
Dated this day 11-24-2010
12/1,8/10

NOTICE OF TRUSTEE’S SALE

NOTICE OF TRUSTEE’S SALE UNDER DEED OF TRUST Title Order No: 4442603 T.S. No.: T09-57091-ID NOTICE IS HEREBY GIVEN that FIRST AMERICAN TITLE INSURANCE COMPANY, the duly appointed Successor Trustee, will on 02-22-2011 at 11:00 AM, of said day, at IN THE LOBBY OF THE OWYHEE COUNTY COURTHOUSE, LOCATED ON THE CORNER OF HIGHWAY 78 AND HAILEY ST, KNOWN AS, 20381 HIGHWAY 78, MURPHY, IDAHO 83650, sell at public auction, to the highest bidder, for cash, in lawful money of the United States, all payable at the time of sale, the following described real property, situated in the County of OWYHEE, state of IDAHO, to wit: THE FOLLOWING DESCRIBED REAL PROPERTY SITUATE IN THE COUNTY OF OWYHEE, AND STATE OF IDAHO, TO WIT: A PART OF THE NORTHEAST QUARTER OF SECTION 29, TOWNSHIP 3 NORTH, RANGE 4 WEST, BOISE MERIDIAN, OWYHEE COUNTY, IDAHO, MORE PARTICULARLY DESCRIBED TO WIT: COMMENCING AT THE NORTHWEST CORNER OF THE NORTHEAST QUARTER OF THE NORTHEAST QUARTER OF SECTION 29, TOWNSHIP 3 NORTH, RANGE 4 WEST, BOISE MERIDIAN, OWYHEE COUNTY, IDAHO; THENCE SOUTH 89° 53’ 00” EAST 357.80 FEET ALONG THE NORTH BOUNDARY OF THE SAID NORTHEAST QUARTER OF THE NORTHEAST QUARTER, TO THE INITIAL POINT; THENCE CONTINUING ALONG THE SAID NORTH BOUNDARY SOUTH 89° 53’ 00” EAST 100.00 FEET; THENCE LEAVING THE SAID NORTH BOUNDARY SOUTH 0° 07’ 00” WEST 435.60 FEET; THENCE NORTH 89° 53’ 00” WEST 100 FEET ALONG A LINE PARALLEL TO THE SAID NORTH BOUNDARY; THENCE

NOTICE OF PUBLIC HEARING

PLEASE BE ADVISED that a public hearing will be held before the Planning and Zoning Commission of the City of Homedale on Monday, December 13, 2010 at 7:00 p.m. at the Homedale City Hall, 31 West Wyoming, Homedale, Idaho, for the purpose of gathering public testimony regarding a proposed rezone of certain properties in the City of Homedale, as set forth in the proposed Ordinance below.

The public is invited to attend and offer input.
Sylvia L. Bahem, Administrator
Planning & Zoning Commission

AN ORDINANCE AMENDING THE AMENDED OFFICIAL ZONING ORDINANCE MAP OF THE CITY OF HOMEDALE, IDAHO BY REZONING CERTAIN PROPERTIES NOW ZONED AS INDUSTRIAL TO EITHER COMMERCIAL OR RESIDENTIAL; REZONING ONE PROPERTY FROM RESIDENTIAL TO PUBLIC, PROVIDING FOR AN EFFECTIVE DATE AND SEVERABILITY.

WHEREAS, there are numerous properties within the City limits of the City of Homedale, Owyhee County, Idaho, west of Highway 95, that are zoned Industrial; and

WHEREAS, some of these properties are properly zoned as Industrial;

WHEREAS, many of these properties are residences for which the proper zoning is Residential; and

WHEREAS, many of these properties are commercial businesses for which the proper zoning is Commercial; and

WHEREAS, there is one property that is currently zoned Residential that should be zoned Public.

BE IT ORDAINED BY THE MAYOR AND COUNCIL OF THE CITY OF HOMEDALE, COUNTY OF OWYHEE, STATE OF IDAHO:

Section 1: That the Official Amended Zoning Map is amended by changing the following addressed properties to the zoning designated in the column entitled “New Zoning.”

ADDRESS	NEW ZONING
124 W. Colorado Property adjacent to Sundance Park purchased by the City of Homedale	Residential
313 E. Idaho 215 S. 2 nd St. E. 15 E. Utah	Public Commercial Residential Commercial
131 W. Wyoming	Residential

Section 2: That this Ordinance shall be in full force and effect from and after its passage, approval and publication, according to law.

Section 3: That should the Court having jurisdiction declare any part of this Ordinance invalid, unauthorized or unconstitutional or in conflict with any other part of this Ordinance, then such unconstitutional, unauthorized or invalid part shall be stricken from this Ordinance, and shall not affect any other part whatsoever of this Ordinance. The Mayor and City Council of the City of Homedale, Idaho, declare that it would have passed this Ordinance, and each part hereof, irrespective of parts declared invalid, unauthorized or unconstitutional.

Passed by the council of the City of Homedale, Idaho this day of

Approved by the Mayor of the City of Homedale, this day of
Harold Wilson, Mayor
Alice E. Pegram, City Clerk
City of Homedale, Idaho
11/24;12/1/10

NORTH 0° 07’ 00” EAST 435.60 FEET TO THE INITIAL POINT. The Trustee has no knowledge of a more particular description of the above referenced real property, but for purposes of compliance with Section 60-113 Idaho Code, the Trustee has been informed that the address of: 5757 DUNLAP LANE MARSING, ID 83639-8062, is sometimes associated with said real property. Said sale will be made without covenant or warranty regarding title, possession or encumbrances to satisfy the obligation secured by and pursuant to the power of sale conferred in the Deed of Trust executed by: NATHAN W. EELLS AND PAULINE M. EELLS, HUSBAND AND WIFE, As grantors, To: FIRST AMERICAN TITLE INSURANCE COMPANY, As successor Trustee, for the benefit and security of CITICORP TRUST BANK, FSB, As Beneficiary, dated 05-07-2007, recorded 05-17-2007, as Instrument No. 261000, records of OWYHEE County, Idaho. PLEASE NOTE: THE ABOVE GRANTOR(S) ARE NAMED TO COMPLY WITH SECTION 45-1506(4)(A), IDAHO CODE, NO REPRESENTATION IS MADE THAT THEY ARE, OR ARE NOT, PRESENTLY RESPONSIBLE FOR THIS OBLIGATION SET FORTH HEREIN. The total amount of the unpaid balance of the obligation

secured by the property to be sold and reasonable estimated costs, expenses and advances at the time of this Notice is: \$176,242.12. All delinquencies are now due, together with unpaid and accruing taxes, assessments, trustee’s fees, attorney’s fees, costs and advances made to protect the security associated with this foreclosure. The Beneficiary elects to sell or cause the trust property to be sold to satisfy said obligation. DATED: October 20, 2010 Federal Law requires us to notify you that we are acting as a debt collector. If you are currently in a bankruptcy or have received a discharge in bankruptcy as to this obligation, this communication is intended for Informational purposes only and is not an attempt to collect a debt in violation of the automatic stay or the discharge injunction. FIRST AMERICAN TITLE INSURANCE COMPANY, AS TRUSTEE C/O CR TITLE SERVICES INC, 866-702-9658 Maria De La Torre, Asst. Sec. FOR SALES INFORMATION, PLEASE CONTACT AGENCY SALES AND POSTING AT WWW.FIDELITYASAP.COM OR 714-730-2727 ASAP# 3819973
12/1,8,15,22/10

Public notices

PUBLIC NOTICE OF INTENT TO PROPOSE OR PROMULGATE NEW OR CHANGED AGENCY RULES

The following agencies of the state of Idaho have published the complete text and all related, pertinent information concerning their intent to change or make the following rules in the latest publication of the state Administrative Bulletin.

The written comment submission deadline is December 22, 2010 unless otherwise listed.

(*PH) indicates that a public hearing has been scheduled.

IDAPA 16 - DEPARTMENT OF HEALTH AND WELFARE, PO Box 83720, Boise, ID 83720-0036

16-0301-1003, Eligibility for Health Care Assistance for Families and Children. (Temporary & Proposed)

16-0303-1001, Rules Governing Child Support Services. (Temporary & Proposed)

16-0304-1004, Rules Governing the Food Stamp Program in Idaho. (Temporary & Proposed)

16-0305-1003, Rules Governing Eligibility for Aid to the Aged, Blind and Disabled (AABD). (Temporary & Proposed)

16-0308-1002, Rules Governing the Temporary Assistance for Families in Idaho Program (TAFI). (Temporary & Proposed)

16-0612-1003, Rules Governing the Idaho Child Care Program (ICCP). (Temporary & Proposed)

Special Note: The following summary applies to all the rulemaking dockets listed above.

The Department of Health and Welfare's Self-Reliance Program has implemented technological and process improvements including a new case management system, consolidated service centers, and electronic case records. In order to further maximize on these improvements, electronic and telephonic signatures will further streamline practices, improve access to services, increase productivity, and better utilize technology and other solutions to connect customers with services.

16-0310-1007, Medicaid Enhanced Plan Benefits. (Temporary & Proposed) Implements the "Idaho Smiles" dental insurance plan through Blue Cross of Idaho for eligible enhanced plan participants.

NOTICE OF ADOPTION OF TEMPORARY RULE, Division of Building Safety. 07-0301-1001, Rules of Building Safety

Department of Health and Welfare, 16-0309-1005, Medicaid Basic Plan Benefits. 16-0310-1006, Medicaid Enhanced Plan Benefits.

Department of Insurance. 18-0150-1001, Adoption of the International Fire Code

Board of Nursing. 23-0101-1002, Rules of the Idaho Board of Nursing

NOTICE OF VACATION OF PROPOSED RULEMAKING. Department of Health and Welfare

16.02.03 - Rules Governing Emergency Medical Services

16-0203-1001 (Chapter Repeal)

16-0203-1002 (Chapter Rewrite)

16-0203-1003 (Fee Rule)

16-0322-1001, Residential Care or Assisted Living Facilities in Idaho

Department of Insurance

18-0125-1001, Title Insurance and Title Insurance Agents and Escrow Officers

18-0156-1001, Rebates and

Illegal Inducements to Obtain Title Insurance Business Rules

Please refer to the Idaho Administrative Bulletin, December 1, 2010, Volume 10-12, for notices and text of all rulemakings, public hearings and negotiated meeting schedules, Governor's executive orders, and agency contact information.

Issues of the Idaho Administrative Bulletin can be viewed at <http://www.adm.idaho.gov/adminrules/>

Office of the Administrative Rules Coordinator, Dept. of Administration, PO Box 83720, Boise, ID 83720-0306

Phone: 208-332-1820; Fax: 332-1896; Email: rulescoordinator@adm.idaho.gov

12/1/10

NOTICE OF TRUSTEE'S SALE

TS #: ID-09-326343-TD
On 3/15/2011, at 11:00 AM (recognized local time), at the following location in the County of OWYHEE, State of Idaho: In the lobby of the Owyhee County Courthouse located on the corner of Highway 78 and Hailey Street, known as 20381 Highway 78, Murphy, ID 83650, Pioneer Lender Trustee Services, LLC an Idaho limited liability company, as Trustee by Quality Loan Services, as Attorney in Fact, as Trustee on behalf of JPMorgan Chase Bank, National Association will sell at public auction, to the highest bidder, for cash, in lawful money of the United States, all payable at the time of sale, the following real property, situated in the County of OWYHEE State of Idaho, and described as follows: This parcel is a portion of Government Lot 1 of Section 4, Township 2 North, Range 4 West of the Boise Meridian, Owyhee County, Idaho and is more particularly described as follows: COMMENCING at the Northeast corner of said Government Lot 1, a found brass cap monument: thence South 89°57'06" West along the North boundary of said Government Lot 1 a distance of 33.00 feet to a 1/2 x 24 inch rebar set with a plastic cap stamped L.S. 3627; said point being the TRUE POINT OF BEGINNING: thence South 1°50'17" East parallel with the East boundary of said Government Lot 1 a distance of 118.00 feet to a 1/2 x 24 inch rebar set with a plastic cap stamped L.S. 3627; thence South 89°57'06" West parallel with the North boundary of said Government Lot 1 a distance of 66.00 feet to a 1/2 x 24 inch rebar set with a plastic cap stamped L.S. 3627; thence North 0°46' 29" West a distance of 117.95 feet to a point which lies on a line 33.00 feet Southerly from and parallel with the North boundary of said Government Lot 1, a 1/2 x 24 inch rebar set with a plastic cap stamped L.S. 3627; thence North 89°57'06" East along said parallel line a distance of 63.81 feet to the TRUE POINT OF BEGINNING. The Trustee has no knowledge of a more particular description of the above referenced real property, but for purposes of compliance with Section 60-113 Idaho Code^ the Trustee has been informed that the address of 999 MAIN ST, MARSING, ID 83639 is sometimes associated with said real property. Said sale will be made without covenant or warranty regarding title, possession or encumbrances to

satisfy the obligation secured by and pursuant to the power of sale conferred in the Deed of Trust executed by LESLIE F DANNER AND TERRIANN R DANNER, WIFE AND HUSBAND as Grantor/Trustor, in which MORTGAGE ELECTRONIC REGISTRATION SYSTEMS, INC., AS NOMINEE FOR AEGIS WHOLESALE CORPORATION, is named as Beneficiary and STEWART TITLE as Trustee and recorded 4/30/2007 as Instrument No. 260799 in book -, page -, of Official Records in the office of the Recorder of OWYHEE County, Idaho. Please Note: The above Grantors are named to comply with section 45-1506(4)(A), Idaho Code, No representation is made that they are, or are not, presently responsible for this obligation set forth herein. The Default for which this sale is to be made is the failure to pay when due, under Deed of Trust and Note dated 4/27/2007. The monthly installments of principal, interest, and impounds (if applicable) of \$1,467.81, due per month for the months of 7/1/2009 through 11/16/2009, and all subsequent installments until the date of sale or reinstatement. The principal balance owing as of this date on the obligation secured by said Deed of Trust is \$200,000.00 together with interest thereon at the current rate of 7.3750 per cent (%) per annum from 6/1/2009. All delinquent amounts are now due, together with accruing late charges, and interest, unpaid and accruing taxes, assessments, trustee's fees, attorney's fees, and any amounts advanced to protect the security associated with this foreclosure and that the beneficiary elects to sell or cause the trust property to be sold to satisfy said obligation. If the Trustee is unable to convey title for any reason, the successful bidder's sole and exclusive remedy shall be the return of monies paid to the Trustee, and the successful bidder shall have no further recourse. If the sale is set aside for any reason, the Purchaser at the sale shall be entitled only to a return of the deposit paid. The Purchaser shall have no further recourse against the Mortgagor, the Mortgagee, or the Mortgagee's Attorney. Date: 11/05/2010 Pioneer Lender Trustee Services, LLC an Idaho limited liability company, as Trustee by Quality Loan Services, as Attorney in Fact, as Trustee Quality Loan Service Corp. of Washington, as Agent 2141 5th Avenue San Diego, CA 92101 Angelica Castillo, Assistant Secretary For Sale Information Call: 714-730-2727 or Login to: www.fidelityasap.com If you have previously been discharged through bankruptcy, you may have been released of personal liability for this loan in which case this letter is intended to exercise the note holders right's against the real property only. THIS IS AN ATTEMPT TO COLLECT A DEBT AND ANY INFORMATION OBTAINED WILL BE USED FOR THAT PURPOSE. As required by law, you are hereby notified that a negative credit report reflecting on your credit record may be submitted to a credit report agency if you fail to fulfill the terms of your credit obligations. ASAP# 3806359

12/1,8,15,22/10

NOTICE OF TRUSTEE'S SALE

On **Monday, February 28, 2011** at the hour of **11:00 o'clock**

A.M., of said day, on the steps of the Owyhee County Courthouse located at 20381 State Highway 78, Murphy, ID 83650,

Alliance Title & Escrow Corp., as successor trustee, will sell at public auction, to the highest bidder, for cash, cashiers check, certified check or tellers check, (from a bank which has a branch in the community at the site of the sale), money order, State of Idaho check or local government check, or cash equivalent in lawful money of the United States, all payable at the same time of sale, the following described real property, situated in the County of Owyhee, State of Idaho, and described as follows, to wit:

Lot 13, Block 2 as shown on the final plat of Silver Sage Subdivision No. 2, Owyhee County, Idaho, filed May 13, 2002 as Instrument No. 239601, Owyhee County records and corrected by affidavit of correction recorded May 20, 2002 as Instrument No. 239681, Owyhee County records.

THE TRUSTEE HAS NO KNOWLEDGE OF A MORE PARTICULAR DESCRIPTION OF THE ABOVE-DESCRIBED REAL PROPERTY, BUT FOR PURPOSES OF COMPLIANCE WITH IDAHO CODE, SECTION 60-113, THE TRUSTEE HAS BEEN INFORMED THAT THE STREET ADDRESS OF: **215 Silver Sage Way, Homedale, ID 83628, MAY SOMETIMES BE ASSOCIATED WITH SAID REAL PROPERTY.**

If the successful bidder cannot provide the bid price by means of one of the above means of payment, the sale will be postponed for 10 minutes only to allow the high bidder to obtain payment in a form prescribed herein above. If the high bidder is unsuccessful in obtaining payment as directed within 10 minutes, the sale will be re-held immediately and any bid by the high bidder from the previous sale, will be rejected, all in accordance with Idaho Code 45-1502 et. Sec.

Said sale will be made without covenant or warranty regarding title, possession or encumbrances to satisfy the obligation secured by and pursuant to the power of sale conferred in the deed of trust executed by Efren Padilla and Leticia Padilla, husband and wife, as Grantor to Alliance Title & Escrow Corp., as Successor Trustee, for the benefit and security of Quicken Loans Inc. as successor Beneficiary, recorded August 9, 2007 as Instrument No. 262037, Mortgage records of Owyhee County, Idaho. THE ABOVE GRANTORS ARE NAMED TO COMPLY WITH SECTION 45-1506(4)(a), IDAHO CODE. NO REPRESENTATION IS MADE THAT THEY ARE, OR ARE NOT, PRESENTLY RESPONSIBLE FOR THIS OBLIGATION.

The default for which this sale is to be made is failure to: Make principal and interest payments as set forth on said Deed of Trust and Promissory Note. The original loan amount was \$127,800.00 together with interest thereon at the rate of 7.625% per annum, as evidenced in Promissory Note dated July 27, 2007. Payments are in default for the months of April 2010 through and including September 2010 in the amount of \$812.06 per month and continuing each and every month thereafter until date of sale or reinstatement. The principal balance as of September 22, 2010 is \$127,800.00 together

with accrued and accruing interest thereon at the rate of 7.625% per annum. The per diem is \$26.70. In addition to the above, there is also due any late charges, advances, escrow collection fees, attorney fees, fees or costs associated with this foreclosure.

The balance owing as of this date on the obligation secured by said deed of trust is \$127,800.00, excluding interest, costs and expenses actually incurred in enforcing the obligations thereunder or in this sale, as trustee's fees and/or reasonable attorney's fees as authorized in the promissory note secured by the aforementioned Deed of Trust.

Dated: October 28, 2010
Alliance Title & Escrow Corp.
By: Bobbi Oldfield, Trust Officer
Phone: 947-1553
11/10,17,24;12/1,10

NOTICE OF TRUSTEE'S SALE

Idaho Code 45-1506 Today's date: November 8, 2010 File No.: 7037.71180 Sale date and time (local time): March 9, 2011 at 11:00 AM Sale location: in the lobby of the Owyhee County Courthouse, 20381 State Highway 78, Murphy, Idaho 83650 Property address: 18265 Oreana Loop Road Oreana, ID 83650 Successor Trustee: Northwest Trustee Services, Inc., an Idaho Corporation P.O. Box 997 Bellevue, WA 98009 (425) 586-1900 Deed of Trust information Original grantor: Edwin Guy Keenan, a married man Original trustee: Pioneer Title Company of Canyon County Original beneficiary: Chase Manhattan Mortgage Corporation Recording date: 01/06/2004 Recorder's instrument number: 246374 County: Owyhee Sum owing on the obligation: as of November 8, 2010: \$74,237.26 Because of interest, late charges, and other charges that may vary from day to day, the amount due on the day you pay may be greater. Hence, if you pay the amount shown above, an adjustment may be necessary after we receive your check. For further information write or call the Successor Trustee at the address or telephone number provided above. Basis of default: failure to make payments when due. Please take notice that the Successor Trustee will sell at public auction to the highest bidder for certified funds or equivalent the property described above. The property address is identified to comply with IC 60-113 but is not warranted to be correct. The property's legal description is: A parcel of land situate in the Northeast Quarter Northeast Quarter, Section 36, Township 4 South, Range 1 West, Boise Meridian, Owyhee County, Idaho, more particularly described as follows: Beginning at the Southeast corner of the Northeast Quarter Northeast Quarter, Section 36, Township 4 South, Range 1 West, Boise Meridian; thence North on the Section line 650 feet to a point; thence due West 270 feet to a point; thence due South 650 feet to a point on the Southerly boundary line of the said Northeast Quarter Northeast Quarter; thence due East 270 feet to the Point of Beginning. The sale is subject to conditions, rules and procedures as described at the sale and which can be reviewed at www.northwesttrustee.com or USA-Foreclosure.com. The sale is made without representation, warranty or covenant of any kind. (TS# 7037.71180) 1002.176279-FEI

11/17,24;12/1,8/10

Public notices



NOTICE OF TRUSTEE’S SALE:

The following described property will be sold at public auction to the highest bidder, payable in lawful money of the United States, in the lobby of the Owyhee County Courthouse, 20381 State Highway 78, Murphy, ID, 83650, on March 21, 2011 at 11:00 AM, (recognized local time) for the purpose of foreclosing that certain Deed of Trust recorded 04/01/2008 as Instrument Number 264417, and executed by JASON S WILLMORTH AND RACHEAL D WILLMORTH, MARRIED TO EACH OTHER, as Grantor(s), in favor of BANK OF AMERICA, N.A., as Beneficiary, to RECONTRUST COMPANY, N.A., the Current Trustee of record, covering the following real property located in Owyhee County, State of Idaho: LOT 7 IN BLOCK 1 OF ROYAL VISTA ESTATES SUBDIVISION, ACCORDING TO THE OFFICIAL PLAT THEREOF, RECORDED APRIL 4, 2002 AS INSTRUMENT NO. 239203, OFFICIAL RECORDS OF OWYHEE COUNTY, IDAHO. The Trustee has no knowledge of a more particular description of the above referenced real property, but for purpose of compliance with Idaho Code, Section 60-113, the Trustee has been informed that the street address of, 2691 KINGSWAY DR, Homedale, ID, 83628-3736 is sometimes associated with said real property. Bidders must be prepared to tender the trustee the full amount of the bid at the sale in the form of cash, or cashier’s check drawn on a state or federally insured savings institution. Said sale will be made without covenant or warranty, express or implied, regarding title, possession or encumbrances to satisfy the obligation secured by and pursuant to the power of sale conferred in the certain Deed of Trust. The default for which this sale is to be made is: Failure to pay the monthly payment due 07/01/2010 of principal, interest and impounds and subsequent installments due thereafter; plus late charges, with interest currently accruing at 6.000% per annum; together with all subsequent sums advanced by beneficiary pursuant to the terms and conditions of said Deed of Trust, and any supplemental modifications thereto. The principal balance owing as of this date on said obligation is \$325,584.88, plus interest, costs and expenses actually incurred in enforcing the obligations thereunder and in this sale, together with any unpaid and/or accruing real property taxes, and/or assessments, attorneys’ fees, Trustees’ fees and costs, and any other amount advanced to protect said security, as authorized in the promissory note secured by the aforementioned Deed of Trust. Therefore, the Beneficiary elects to sell, or cause said trust property to be sold, to satisfy said obligation. NOTICE IS HEREBY GIVEN THAT THIS FIRM IS ATTEMPTING TO COLLECT A DEBT AND ANY INFORMATION OBTAINED WILL BE USED FOR THAT PURPOSE, AND THAT THE DEBT MAY BE DISPUTED. THE ABOVE GRANTORS ARE NAMED TO COMPLY WITH SECTION 45-1506(4)(a) IDAHO CODE. NO REPRESENTATION IS MADE THAT THEY ARE, OR ARE NOT, PRESENTLY RESPONSIBLE FOR THIS OBLIGATION. DATED: 11/09/2010 Name and Address of the Current Trustee is: RECONTRUST COMPANY, N.A., 1800 Tapo Canyon Rd., CA6-914-01-94, SIMI VALLEY, CA 80028-1821, PHONE: (800) 281-8219. TS # 10-0145198 FEI #: 1006.11851 11/24;12/1,8,15/10

HELP WANTED
Calf feeder wanted. Female preferred. Experience preferred. Homedale area, Owyhee Dairy 337-4226
Drivers/CDL Training w/Central Refrigerated. AVG \$35K-\$40K 1st year! Offering Special CDL Training to Military! 1-877-369-7885

WANTED
Wanted: Boyfriend for a female mallard hen duck, call 989-6641. Treadmill for sale, call 899-1790

LOST AND FOUND
Lost: older border collie, skittish male, may answer to Ruff, lost the week of Nov. 8th after car accident in Wilder at Hwy 95. Was seen running toward Homedale. Please contact Linda Jo 541-586-2382 w/info on Laz Mendieta’s companion.

MIN-AD, Inc. is seeking a Production/Plant Manager for our Winnemucca operation.

MIN-AD, Inc. mines, processes, and markets a livestock feed supplement. The quarry and grinding plant are located in Winnemucca, Nevada. Logistics and administrative groups also work out of the Winnemucca office. In addition, MIN-AD has sales and marketing offices in Amarillo, Texas and Toronto, Canada with Warehouse facilities in Texas, Kansas, Minnesota, and Canada. The company has been in business for forty-five years.

Responsibilities would include the supervision of all operations and maintenance functions while working closely with logistics and sales groups.

The successful applicant must possess and be able to demonstrate strong leadership, analytical and operational skills.

A Technical background in grinding circuits is desired.

The ideal candidate needs to have knowledge of industrial minerals business operations.

MIN-AD offers a full benefit package including medical, dental & vision, as well as 401k.

Please submit Resume to PO Box 39, Winnemucca, NV 89446.

Rubber Stamps

Made to order

The Owyhee Avalanche

337-4681

THE BUSINESS DIRECTORY

A Great Deal for Small Business Owners!

REACH OVER 7,000 Homes

From Jordan Valley to Wilder!

ADS SHOWN ACTUAL SIZE

Let Our Readers Know About Your Business & The Services You Offer!

Show us how you want your ad to look... Just fill out the space to your left and mail or fax it to...

The Owyhee Avalanche

P.O. Box 97
Homedale, Idaho 83628
Fax: 337-4867
Phone: 337-4681

Please Include Your Name, Address, Zip and Phone Number.

RUN YOUR AD 1 MONTH FOR ONLY \$10/WEEK DEADLINE FRIDAY AT NOON FOR FOLLOWING WEEK’S PUBLICATION

The Owyhee Avalanche

ALL ADVERTISING IS IN BOTH THE OWYHEE AVALANCHE & THE OWYHEE WRAP-UP

Tee up more business...

Reach 8000 homes in YOUR market!

Advertise in

The Owyhee Avalanche!

337-4681 • www.theowyheeavalanche.com

Local News, Sports, Community & more!

Wednesday morning in Owyhee County

That's when the Owyhee Avalanche hits the news stands

Please enter my subscription to the Owyhee Avalanche now! Enclosed is \$_____

NAME _____

ADDRESS _____

CITY _____

STATE _____ ZIP _____

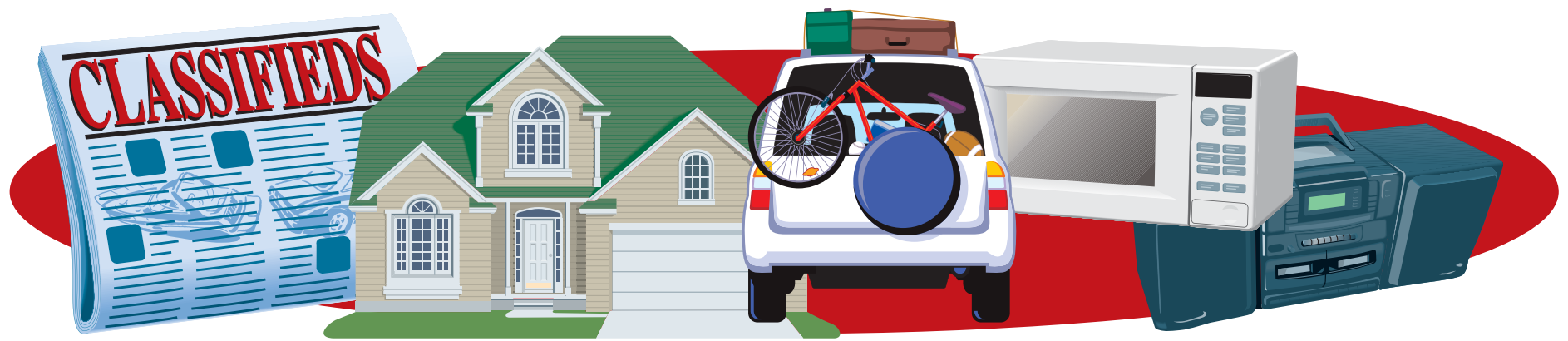
SUBSCRIPTION RATES:

Owyhee County.....	\$31.80
Canyon, Ada and Malheur Counties.....	\$37.10
Elsewhere	\$42.40
Elsewhere	\$40.00

Sales Tax included where applicable

The Owyhee Avalanche

P.O. BOX 97 • HOMEDALE, ID 83628



FARM AND RANCH
Wanted: ground to rent, Homedale/ Wilder area. Cash rent. Owyhee Dairy 337-4226
Wanted: ground to rent, Homedale or Wilder area. Cash rent or share crop. Pivots or furrows preferred. 546-8591, 585-1711
Balewagons: New Holland, self-propelled & pull-type models. Financing/ trades/ delivery available. Call Jim Wilhite (Greenleaf) 208-880-2889 www.balewagon.com

4 Bar T Fencing
Fix old fence, build new, barb wire, field fence, rail fence, vinyl.
Call for quote
Cell: 473-8026
References available.

FOR SALE
English walnuts for sale. \$1.50 lb. 208-896-4478
Private fun piano, guitar, violin, fiddle & ukulele lessons. All ages & levels. Reasonable rates. 208-283-5750, 467-6244
ATV & Motorcycle Tires, 25x8-12 & 25x10-12 GBC Dirt Devil ATV tires \$319. All sizes available. Tim's Small Engine, 30916 Peckham Rd. Wilder. 482-7461 www.wilderrepair.com
Idaho Peaches. Hell's Canyon Brand by the can or case. Robison Fruit Ranch 459-2269 or 459-7987
Microfiber couch & love seat, stain resistant, lifetime warranty, brand new in boxes. Retail \$1399. Must sell \$450. 208-888-1464
Bedroom set 7-piece cherry set Brand new in boxes. List \$2250. Must sell \$450. 208-888-1464
Bed-queen pillowtop mattress Brand new, still in plastic, warranty. Sacrifice \$109. 208-921-6643
King-sized pillowtop mattress New, in bag, with warranty. List \$750. Sacrifice \$199. 208-921-6643
Cherry Sleigh bed solid wood w/mattress set. Brand new in box. \$299. 208-888-1464
Used tractor parts 100's of salvaged farm tractors and combines. Nampa Tractor Salvage, 9055 Hwy 20, Nampa, ID 83687 (208) 467-4430
Roll ends: Great for packing material, building fires, lining birdcages or for your kids to doodle on. The Owyhee Avalanche, Homedale

FOR RENT
Homedale 2+ bdrm mobile home in residential area. Large deck, spacious yard, \$395 +dep. References req'd. Call 253-736-3742 or 337-3873
Wilder 2+ bdrm home w/office & workshop, fully fenced, \$495/mo +dep. 253-736-3742
Nice Clean Homedale house. 3 bdrm 2bth, big yard, 1-car garage, \$550/mo \$400/dep. No pets or smoking please. 447-8165
\$50 per month Discount. 3 bdrm, 1 bath house in Homedale. Detached garage w/ carport, Large yard & garden, W & D hook-ups, \$575/mo. \$500 deposit. Background check. 215 W. Arizona. 573-1704
Marsing 5 bdrm 2 bth, family room, garage, small fenced lot, \$750 +dep. 965-7398, 896-5355
1 bdrm Homedale apt, 18 W Owyhee, \$375/mo \$200/dep, references required. 880-7929
Homedale 2 bdrm mobile home, \$425/mo, deposit negotiable. Call 866-1563
\$475 Studio + finished shop/ garage. New remodel, clean, private, fenced with lot downtown Homedale. 880+ sq/ft. No credit check, no application fee, no lease. Call 333-0066
Homedale 2- 1 bdrm duplexes. Nice, clean, large bdrms, different color schemes, w/s/t paid, window AC provided, no pets, 1-2 people only, \$375 +dep. 221 W. Montana Ave #7 & #9. Call/text for info & showing. 475-3915

Buy it, sell it, trade it, rent it... in the Classifieds!

MARSING THRIFT SHOP LLC
410 Main St, Marsing
Mon - Fri 11:00 am - 6:00 pm
Sat 11:00 am - 3:00 pm
www.marsingthriftshop.com
More of a Gift Shop with Thrift Shop prices!
Bogus Basin Gift Card ~ Skis
Snow Board & Ski Boots
50% All Clothing
Artificial Christmas Trees
896-4568

FOR RENT
For lease. 1109 1/2 Main St (in rear) Marsing. Newly remodeled 3+ bdrm 2 bth 2.5 car garage. No smoking, no pets. 1 year required. \$750/mo, first, last, plus \$750/dep. 896-5803
Apartments available in Wilder. \$325-\$375. Please call 208-899-0648
2 bdrm duplex, Wilder. Fenced yard, \$475/mo. 208-660-3660
Storages for rent. Pioneer Mini Storage, 4155 Pioneer Rd, Homedale. 208-337-4589, 208-573-2844
Jump Creek Storage. Residential/ commercial steel concrete units, 5x15, 10x5, 10x25. Vehicles, construction equip allowed, gas engines ok! Price match +discounts given! 509-539-6010, 208-250-2461
Marsing Storage Inc., Hwy 55 & Van Rd. 10x10 units available, trailer spaces. Call 208-830-1641

SERVICES
Wilson's Mobile Tractor Service. Call for weed control, mowing, weed eating, tilling, fire protection around your home & farm. Call Charlie 250-4937 Property cleanups & car removal
Daycare, all ages, ICCP approved, all meals provided, preschool available, limited spots. Overnights available. Call Donna 337-6180
Call Mountain West Tree LLC for free estimate. We take pride in your tree service needs! 585-9069
Top soil & all kinds of gravel products, delivered &/or placed. Back hoe, track hoe, grader, dump truck or belly dump for hire. Demolition, driveways & general excavation. Jim 573-5700
Four Points Construction. Free Estimates, Competitive Rates, No job too small. Serving Owyhee County and surrounding areas. Call Rob 337-4423

SERVICES
Parker Tree Service Inc. Family operated since 1937. Specializing in tree trimming, pruning, removal. For the most reliable job & service call 208-461-8733. Lic/insured.
Technical Computer LLC, repairs, tune-ups, backups, upgrades, networking. Call Tom or Colette 896-4676, 899-9419 or technicalcomputer.com
Tim's Small Engine Repair Complete servicing and repair on all makes and models of Motorcycles, ATVs & Power Equipment 30916 Peckham Rd. Wilder 5 1/2 miles west of hwy 95. 482-7461 www.wilderrepair.com
Trees topped & removed. Clean up & stump removal available. 337-4403
NOW BUYING ALUMINUM CANS
Free removal of appliances, scrap metals, junk cars/trucks
cash for some
609 Goldengate Ave, Wilder
Bill 208-724-1118

BAXTER BLACK

DOUBLE DVD LIVE! ONLY \$24.95!

A double DVD collection of Baxter's appearances on *Iowa Public TV* and *The Tonight Show with Johnny Carson!*



\$24.95

Extra footage including interviews, a blooper reel, and four of Baxter's wildly popular short videos from *Out There!*

PLEASE ADD \$7.50 for shipping!

send check or money order to:
Coyote Cowboy Company
PO Box 2190 DEPT. OA
Benson, AZ 85602
or call us **800-654-2550!**

NAME: _____ PHONE: _____

ADDRESS: _____

CITY/STATE/ZIP: _____

Homedale: 7 commercial lots close to Basque Ctr. & future Legion Hall \$122,500
Homedale/Wilder: 2 bed/1 bath on 2 ac., Homedale School District, short sale \$90,000
Homedale: Building Lots/2.2 to 7 acres, \$44,000 to \$140,000, will build to suit
Homedale: 5 adjacent building lots near fairgrounds & elementary school \$87,500
Caldwell: 3 bed/1.5 bath home w/shop, located on West Linden \$119,800
Caldwell: 2 bed/2bath home on 3 ac. in city limits w/city services \$149,900
Caldwell: 13.9 ac. w/21 lot approved plat on 6.9 ac. + 7 ac. separate parcel \$347,500
Homedale: Will build to suit: 1900+/- sf home on 2.2 ac. lot \$199,000 or \$309,000 on 7+/- ac. lot (price may vary based on plan selected)
Homedale: 3 bed/1 bath w/shop, RV parking \$79,900
Mini-Estate: Immaculate 4 bed/3 bath, 1.38 ac. \$285,000
Homedale: Estate property sold "as is", 3 bed/1.5 bath on .48 ac. lot \$65,000
Wilder: 33 building lots in Wilder Subdivision \$13,500-20,900
Wilder: Commercial Lot nearly ¾ ac. w/Hwy 95 frontage, w/city services \$185,000
Ranch on Succor Creek: 2000+ of creek frontage, 77 ac. w/3 bed/3 bath home- call for details

Patti Zatica
Phone: 208-573-7091



Snake River Mart



PICK A TAG
Off the Sharing Tree!
Help Our Local Families!

Bake-Em Happy

**Gift Cards**
Great Stocking Stuffers!

<div>Boneless Beef Cross Rib Roast</div> <div></div> <div>\$199 lb.</div>	<div>Boneless Beef Cross Rib Steak</div> <div></div> <div>\$219 lb.</div>	<div>Texas Pink Grapefruit</div> <div></div> <div>3\$1 for</div>	<div>Extra Large Roma Tomatoes</div> <div></div> <div>99¢ lb.</div>
<div>Pork Quarter Loin Chops</div> <div></div> <div>\$159 lb.</div>	<div>Pork Loin Center Chops</div> <div></div> <div>\$199 lb.</div>	<div>Dole Salad Blends</div> <div></div> <div>2\$5 for 5-10 oz.</div>	<div>Red Potatoes</div> <div></div> <div>2lb for 89¢</div>
<div>Western Family 8 oz. \$349 lb. Variety Pack Hams</div> <div>Western Family \$229 ea. Single Pack Cheese</div> <div>Western Family 32 oz. \$599 ea. Shredded Cheese</div>	<div>Western Family 16 oz. \$349 ea. Cheese Cuts</div> <div>\$259 lb. Beef Stew Meat</div> <div>49¢ ea. Deli Burritos</div>	<div>Whole or Sliced 8 oz. 2\$4 Mushrooms</div> <div>\$129 ea. Avocados</div> <div>89¢ lb. D'Anjou Pears</div>	<div>79¢ lb. Navel Oranges</div> <div>\$189 ea. 1 lb. Bagged Kiwi</div> <div>59¢ lb. Baker Potatoes</div>
<div>Western Family Powdered or Brown Sugar</div> <div></div> <div>\$129 ea. 32 oz.</div> <div>\$329 ea. Western Family 10 lb. Flour</div>	<div>Lean Cuisine Entrees</div> <div></div> <div>\$239 ea. 8.5-10.5 oz.</div> <div>89¢ ea. Western Family 12 oz. Evaporated Milk</div>	<div>Pepsi Products</div> <div></div> <div>\$519 ea. 12pk 12oz Cans</div> <div>\$159 ea. 2 Liter Bottles Pepsi Products</div>	<div>Coors Beer</div> <div></div> <div>\$1449 ea. 18pk Cans or Bottles</div> <div>\$1349 ea. 12pk Bottles Corona Beer</div>
<div>Western Family Real Margarine Quarters 69¢ ea. 1 lb.</div> <div>Western Family Milk 1%, 2%, Skim \$269 ea. Gallon</div> <div>Guittard Baking Chips \$219 ea. 12 oz.</div> <div>Swiss Miss Hot Chocolate Mix \$139 ea. 10 ct.</div> <div>Stagg Chili \$179 ea. 15 oz.</div> <div>Western Family Chunk Light Tuna in Water 79¢ ea. 5 oz.</div>	<div>Pillsbury Cake Mixes \$109 ea. 18.25 oz.</div> <div>Post Cocoa Pebbles, Honeycombs & Raisin Bran \$339 ea. 11-12.5 oz.</div> <div>Western Family Cooking Oil \$329 ea. 48 oz.</div> <div>Western Family Walnut Halves & Pieces \$519 ea. 16 oz.</div> <div>Western Family Marshmallows \$139 ea. 16 oz.</div> <div>Musselman's Applesauce \$229 ea. 6pk-4 oz.</div>	<div>Amp & No Fear Energy Drinks 2\$3 for 16 oz. Cans</div> <div>Bear Creek Soup \$329 ea. 8-12 oz.</div> <div>Western Family Oyster Crackers \$179 ea. 12 oz.</div> <div>Hershey Kisses \$369 ea. 11 oz.</div> <div>Christmas Snack Candy Assorted \$369 ea.</div> <div>Western Family Petal Soft Mega Roll Bath Tissue \$669 ea. 9 Pack</div>	<div>Lofthouse Christmas Cookies Asst'd Varieties \$199 - \$299 ea.</div> <div>Banquet Pot Pies 79¢ ea. 7 oz.</div> <div>Nabisco Oreo Cookies \$359 ea. 15.2-16.6 oz.</div> <div>Hostess Twinkies, Ho Ho's & Ding Dongs \$269 ea. 10-17 oz.</div> <div>Grandma Sycamore White & Wheat Bread 2\$5 for 24 oz.</div> <div>Doritos, Ruffles, Lays Kettle Cooked, Sun Chips & Lay's Dips 2\$6 for</div>

HOURS: MON. - SAT. 6:00 A.M. TO 9:00 P.M. - SUNDAY 7:00 A.M. TO 8:00 P.M.
MARSING, IDAHO

WE RESERVE THE RIGHT TO LIMIT QUANTITIES AND CORRECT PRINTED ERRORS • PRICES EFFECTIVE 12/01/10 THRU 12/07/10