

The Owyhee Avalanche

VOLUME 21, NUMBER 6

HOMEDALE, OWYHEE COUNTY, IDAHO

SEVENTY-FIVE CENTS

Patrons petition for another recall

Suspended teacher's hearing postponed

Bruneau/Grand View patrons have petitioned for another recall election against a school board trustee and the hearing for a Bruneau school teacher who has been suspended has been postponed.

District Superintendent Dallas Taylor said she understood that the teacher's attorney had requested that the hearing be postponed. She said a future date had not been set for the hearing.

"All I know for sure is the hearing has been postponed," Taylor said. "My understanding is her attorney requested to have the hearing postponed." The district's attorney Brian Julian could not be reached at his Boise office.

Taylor also said that a petition had been turned into the district office Friday requesting a recall election of Trustee Russ Turner.

Last year, a recall election was held to remove zone 3 trustee Darrel Agenbroad, but the election ended in a deadlock and Agenbroad did not lose by a majority of the vote.

— to page 5



Hungry appetites

A mom juggles two small children at the oriental booth during last weekend's International Smorgasbord in Homedale. A wide variety of international cuisine was served to several thousand people.

Homedale man sentenced to 10 years for child injury

A Homedale man accused of several counts of sexual crimes against a young girl will serve at least eight years in prison and could serve up to 10 years. Michael Kroll was arrested last year and charged with incest, several counts of lewd and lascivious conduct with a child under 16 and with penetration by a foreign object. Although a previous plea agreement could have promised him a much lighter sentence, the judge hearing the case felt differently.



Michael Kroll

Owyhee County Prosecuting Attorney Matthew Faulks said he didn't have much to do with the decision because the arrangements had been made prior to his taking office in January. District Court Judge Gregory Culet made the final decision, which was much different than a plea agreement he made with former prosecuting attorney Ed Yarbrough.

Reports state that Kroll had pleaded guilty under a rule 11 and Alfords plea agreement to felony injury to a child, which allowed Kroll not to admit guilt, but to admit that the state had enough evidence to convict him

on the charges. It gave him the opportunity to plead guilty as long as the judge agreed with the suggested sentence, which in this case would have been three years fixed, two years indeterminate with a suspended sentence,

some probation time and serve some local jail time. Faulks said after the pre-sentence investigation was reviewed, the judge did not feel he could adhere to that agreement based on the nature of the offense that was alleged and the evidence and statements presented.

"I hesitate to speak for the judge, but he did notify us ahead of time that he would have some concerns about it," Faulks said. "Once it was determined that the

— to page 5

Sixth grader gathers Valentines gifts for Hope House



Spreading love

Kirsi Thatcher and Taylor Thomas write on Valentine's cards they delivered to children at the Hope House in Marsing Monday afternoon.

A sixth grade student at Homedale Middle School came up with an idea on how to share love and affection to a group of children in the true spirit of Valentines Day. Kirsi Thatcher coordinated the effort to collect gifts for children at the Hope House in Marsing.

"One night I was thinking about how much we have and how some people don't have anything," Kirsi said. "My mom told me that there is a Hope House in Marsing and so I decided I could help it. I thought how we have parents and they don't so I wanted them to know we are thinking about them."

Thatcher asked students throughout the school to bring in clothing, money and dry food items to share with the 43 children at the Hope House. She coordinated baked food sales and raised nearly \$150 in the month long effort. She also made flyers, which she placed in the halls of the school as well as in her church.

Kirsi's teacher, Lesa Folwell said students in the school donated extra Valentine's cards which Kirsi's class collected and made out for each child at the home.

"I couldn't believe we raised that much," Folwell said. "The kids have been very excited to help."

The students traveled to Marsing on Monday to deliver the gifts.

Inside

Local task force members behind the scenes of shooting
page 3

Initiative group pulls out
page 2

Obituaries
page 6

Classifieds
page 18-19

Sports
pages 10-11-12

Local task force members behind the scenes of Nampa officer shooting

As the media focused on the search for a Nampa man accused of shooting a Nampa Police Officer, behind the scenes were three local faces who assisted in law enforcement's quest to bring a criminal to justice.

Owyhee County Chief Deputy Dick Freund, investigator Jim Bish and Homedale Police Chief Jeff Eidemiller were called to duty as part of a critical incident task force team made up of law enforcement officers from Owyhee County, Homedale, Parma, Caldwell City, Nampa City and Idaho State Police. Bish said Monday the collaboration of the task force team is what brought Mariano Perez into the arms of the law.

Perez is accused of shooting Nampa Police Officer Cpl. Allen Williamson last week. He fled the scene and kept law enforcement officials just one step behind him until Friday when he was apprehended in Reno, Nevada.

Bish said the call is the first real call-out for the task force team since its induction nearly a year ago. He said although he hopes it will not have to be used again soon, if it does he knows the team he works with will be ready.

“The team is formed for officer-involved shootings,” Bish said. “I worked with the interview team. Everyone kept the information flowing and we got the job done. It was well thought out. We were just about five minutes behind him for the most part.”

Bish said one report of a sighting had come out of Owyhee County. He said a home was “of interest” in Homedale when a reliable source claimed Perez had been seen.

"There was a lot of reports, but we had one solid lead that was reported from Homedale," Bish said. "We do not know if he had been here, or if it was a look-alike sighting. We will continue to follow up on it to see if anyone here assisted him."

"Repeated training and expert training is what kept Allen Williamson alive," Bish said. "You have to have good intelligence going back and forth between the departments on who to look out for and who to watch. It is going on. The relationship with departments is a must."

Perez told a local television station that he was high on methamphetamine when he shot Williamson. He is being held in a county jail in Reno and is expected to be extradited.

We'll Make Doing Your Taxes A Lot Less Taxing

- **Electronic filing**
- **Tax Planning**
- **Late returns/prior years**
- **Year-round service**
- **IRS representation**
- **Convenient appointments**
- **Reasonable rates**
- **Computerized accounting**
- **Fax service**



BOWEN & PARKER
C.E.A.A. CHARTERED

Homedale

Mikeal D. Parker, CPA
19 E. Wyoming

Nampa

Ron Bowen, CPA
624 16th Ave. S.

337-3271

467-6900

Hours: Monday-Friday 8:00 a.m. to 6:00 p.m.
Saturday 9:00 a.m. to 2:00 p.m.

Evening & Weekend Appointments Available

Read all about it
in the Avalanche!



Council raises funds for tsunami victims

Fifth and sixth grade student council members at Homedale Middle School raised \$200 for victims of the tsunami overseas. The money will be given to the Red Cross to help victims recover from the disaster. The council placed cans in each classroom for donations. Pictured are, Raven Kelly, Deena Emry, Laurien Mavey, Justine Calzacorta and JR Cardenas. Back row, Alicia Aguilera, Ada Demshar and Caitlyn Johnson.

THE MAYTAG BIG DEAL

**Up To \$200
Cash Back On
Select Kitchen
Appliances***

Buy any **2** select appliances and
receive a **\$50 Rebate!***

Buy any **3** select appliances and
receive a **\$100 Rebate!***

Buy any **4** select appliances and
receive a **\$200 Rebate!***

THAT'S A BIG DEAL!



**OFFER GOOD JANUARY 13
THROUGH MARCH 26**

* Mail-in rebate, ask for details.

FREE DELIVERY!

Rostock

FURNITURE & APPLIANCE of CALDWELL

Your Downtown Neighborhood Store for 40 years!
307 South Kimball, Caldwell 459-0816

4-H and FFA beef weigh-in scheduled

Owyhee County 4-H and FFA Beef weigh-in is scheduled for March 12 in Homedale at the Owyhee County Fair Grounds, at 11 a.m. and in Oreana at Bill and Bev White’s ranch at 4 p.m.

Animals will be weighed and tagged. Ralgrow implants will be available for those who wish to use them. A frame score stick will also be available for measuring and estimating frame score and most desirable finished weight. Animals must be weighed in under one name and shown by that person at the fair. A family may weigh in one additional animal without a member name, but can only show the animal as a replacement for a lost or under weight animal.

Weighing breeding projects is optional but would be helpful to the project. Animals shown in showmanship must belong to the member. If original animal can not be shown, they must come up with a replacement belonging to them.

All animals require a brand inspection for change of ownership. The inspection record will be needed in order to obtain a brand inspection for sale at the fair in August. Sponsored animals do not need a brand inspection until fair time.

In recent years the extension office has had more steers grading choice and fewer cutting dark at slaughter. The dark cutters are usually due to stress prior to slaughter. Steers that are wild at fair time run a 50 percent risk of cutting dark.

The opportunity to increase net income from steer projects is great if animals grade choice and do not cut dark. All animals should be gentle and trained to lead before weigh in. This will allow time to be sure the animal will be gentle throughout the feeding period and during the fair. Gentle animals will gain faster and will be much less likely to cut dark at slaughter.

Owyhee County 4-H member enrollments are due to the Extension Office March 1st. All 4-H members weighing a 4-H beef project should be enrolled in either the 4-H market or breeding beef projects. For more information or questions, please call the Extension Office at 896-4104.

Rimrock marine promoted *Triad to hold annual card party*

Marine Corps Lance Cpl. Newt Chappell recently was promoted to his current rank while serving with 4th Marine Regiment, Okinawa, Japan.

Chappell was promoted based on sustained superior job performance and proficiency in his designated specialty.

Chappell is a 2000 graduate of Rimrock High School of Bruneau, Idaho and joined the Marine Corps in September 2003.

A card party will be held in Marsing on March 4 at 7 p.m. at the Senior Citizen’s Center. Dominoes, cards and other activities will be offered. A donation of \$5 is suggested.

Refreshments will be served.



New administration

A new administration was elected into office recently for the Homedale Chamber of Commerce. Gavin Parker, vice president, Tammy Giedd, secretary-treasurer and Aaron Tines, president, took over the duties of the chamber last week. Meetings are held at Owyhee Restaurant in Homedale on the second Thursday of each month at noon.

Rimrock high honored with accreditation

Rimrock Jr-Sr High School was recently honored for being regionally accredited by the Northwest Association of Accredited Schools. The school received its accreditation status by the Northwest Association of Accredited Schools Commission on Schools at its annual meeting in Las Vegas.

Rimrock was first accredited with the Association in 1980. Its State Accreditation Committee also approves the school for the academic year 2004/2005. Rimrock is one of 1,715 in the region and one of over 36,000 schools nationwide to maintain regional accreditation.

Accreditation of a school is on a school-wide basis. It should be noted that the whole school, not just one program, is covered by the accreditation. The process is concerned with the inherent characteristics of each school

rather than comparisons with other schools.

By being accredited, Rimrock Jr-Sr High School is guaranteed that other schools will recognize their students’ credits, transcripts, and diplomas.

Senior class to raffle BSU football and Playstation 2

The Homedale senior class of 2005 is raffling a Boise State autographed football signed by the 2004-2005 BSU Bronco team and a Playstation 2 as part of its senior drug and alcohol free party and senior class trip fundraiser.

Tickets are \$5 each or five tickets for \$20. The drawing will be held on March 9 during the senior/faculty basketball game.

For more information contact Judy Duryee at 337-4440 or Shelly Blodgett at 337-3190.

The Owyhee Avalanche

P.O. BOX 97 • HOMEDALE, ID 83628
PHONE 208 / 337-4681 • FAX 208 / 337-4867
E-mail owyheeavalanche@cableone.net

U.S.P.S. NO. 416-340
Copyright 2005—ISSN #8750-6823

JOE E. AMAN, *editor-in-chief and publisher*
CHERYL BEESON, *reporter*
JENNIFER STUTHEIT, *office*
ROBERT AMAN, *composition*

Published each week in Homedale, Idaho by Owyhee Avalanche, Inc. Entered as Periodical, paid at the Post Office at Homedale, ID under the Act of March 3, 1879. POSTMASTER: send address changes to THE OWYHEE AVALANCHE, P.O. 97, Homedale, ID 83628.

Annual Subscription Rates:

Owyhee County.....	\$31.80
Canyon, Ada, Malheur counties	37.10
Elsewhere.....	40.00

(Price includes sales tax where applicable)

Deadlines

Classifieds Monday noon the week of publication	Display advertising Friday noon the week prior to publication
Legal notices Friday noon the week prior to publication	Inserts Friday noon the week prior to publication

Letters to the editor

Friday noon the week prior to publication
(Limit 300 words, signed, with day phone number.)

two Lane recliners for one low price!

\$499
Pair

\$899
Pair

\$899
Leather Pair

ALL AMERICAN Sale-A-Bration

1 Year No Interest on Everything in the Store!

Lane President's Day Sale!

Save on all Lane Furniture!

Reclining Sofa/
Reclining Love Seat Set **\$1499**

New selection of Carpet & Vinyl has arrived!
Carpet or Vinyl - \$14.95 /yard Installed
Wood Laminate Flooring - \$1.99/ foot

Parma Furniture Co.
"Like Having A Friend At The Factory"
108 3rd St. • Parma, Idaho
722-5158• toll free: 888-722-0078

School board postpones policy changes

Rimrock School Board had planned to hear many changes to policies during a regular meeting held last week, but decided to table the policies until the next meeting on March 17.

Policies to be heard were security, community use of school facilities, housing, material and equipment management, authorized use of school owned equipment, bus driver requirements, transportation drug and alcohol testing, bus purchasing and maintenance, school owned personal vehicles, food service program, graduation requirements, evaluation of support services, environmental and safety program, school closing and cancellations, buildings, grounds and property management and maintenance.

One policy to be considered to change is the district’s meeting procedures policy. An addition to the policy would include limitations to audio recording and video taping of meetings. The board will consider changing the policy to include only allowing video or audio recording of board meetings, with the exception of executive sessions or closed hearings, by any staff or patron of the district. Several guidelines have been included that will only allow recording equipment to be placed 30 minutes prior to board meetings, copies must be submitted to the board of trustees within 10 days and recording equipment may not be taken down until the meeting is concluded.

“Failure to follow any of the above guidelines will result in a letter to be issued by the superintendent on behalf of the board to the staff member or patron of the district denying them permission to record future meetings,” the proposed policy states.

Although the board’s policy states that board meetings are to start at 7 p.m. and will not go beyond 11 p.m., with the provision to extend the time by a majority vote, a work session or executive session may be held prior to 7 p.m.

School Superintendent Dallas Taylor said last week that during the winter months, the board has been meeting at the different schools in the district during the day and meets on the second Thursday and the fourth Thursday. She said the board has been meeting during the day in the winter for 23 years and she did not realize the policy stated the meetings were to be held at 7 p.m.

Taylor said the minutes of the January 13 meeting would not be available until after the March meeting due to mistakes that needed to be corrected. She said a motion to adopt them during last week’s meeting was not made.

Raider football coach, assistant’s contracts not renewed

Rimrock Raider football coach Carl Voight and his assistant coach, Pat Field, will no longer be coaching the Rimock Raiders varsity team after the school board chose not to renew their supplemental contracts during a regular board meeting last week. District superintendent Dallas Taylor said she could not discuss the reasons why the contracts were not renewed, but she said the coaches have the option to request a hearing on the decision.

“There was a motion made not to renew the supplemental contracts of the head football coach and the assistant football coach,” Taylor said Friday. “That’s a rumor we keep hearing back already is that we have done away with the whole football program and that is not true. They have a right to an informal hearing so no advertisements will go out yet. There is no way we are going to get rid of the program or the coaches. It is just a ridiculous thing to think of.”

Taylor said the vote was 4-1 in favor of not renewing the contracts. Pat Field could not be reached for comment and coach Carl Voight did not return several phone messages.

Don't just dream about retirement.

Plan For It.

Tim Quintana
3876 Hwy 95
Homedale, ID 83628
208-466-8594
OR 208-989-3868

www.edwardjones.com
Member SIPC

Edward Jones
Serving Individual Investors Since 1875

Read all about it in the Avalanche!

HMS releases honor roll

Homedale Middle School released the names of honor roll students for the second quarter last week. Students receiving a 3.0 to 4 .0 grade point average (GPA) were honored.

Students fifth through eight grade receiving a 4.0 gpa were: fifth grade: Justine Calzacorta, Deena Emry, Kylie Farwell, Carissa Gardner, Rachel Gonzalez, Makayla Jerome, Raven Kelly, Cody Lynde, Lane Matteson, Laurien Mavey, Madison Pendergrass, Katie Price, Brett Ryska, Angel Jr Salazar, Phaedra Stevenson, Brenda Vega and Martha Velazquez.

Sixth grade 4.0 students are: Jarod Armenta, Sydney Cornwall, Matthew Farrell, Caitlyn Johnson, Sarah Maggard, Elizabeth Silva, Jonathan Stacey, and Tyler Theile.

Seventh grade 4.0 students are: Jennifer Dixon, Drew Farwell, Kindra Galloway, Kara McRae, Thomas Palmer, Aaron Proferes, Megan Quintana, and Kortney Stansell.

Eighth grade 4.0 students are: Cody Gardner, Ryan Garrett, Trinity Heath, Kevin Mercado, Mitchell Quintana, Kendall Rupp, Annamaria Salas, Jessica Sotelo and Andrea Vega.

Fifth grade 3.5 to 3.99 students are: Dominic Christiansen, Destinie (DD) Gardner, Conner Landa, Aubrey Nash, Kyle Purdom, Nahum Bermudez, Rachael Brasher, David Clampitt, Kylie Kushlan, Bodie Hyer, Darren Pattison, Wendy Prado, Brett Shanley, Nicolas Stewart and April Strohmman-Norris.

Sixth grade 3.5 to 3.99 students are: Amber Brinkerhoff (Romriell), Stephen Lauson, Taylor Thomas, Kirsy Thatcher, Colin Lootens, Gil Lootens, Summer Phelps, Kiley Potter, Taylor Watkins and Jordan Meligan.

Seventh grade 3.5 to 3.99 students are: Cody Johnson, Ryan Ryska, Vanessa Sanchez, Guadalupe Ozuna-Garcia, Jake

Tolmie, Carmen Zatica, Jessica Eubanks, Albert Villa, Megan Harper, Stefan Pippen, Elizabeth Baltierrez, Gonzalo Casillas, Ci-Jae Christensen and Ashlynnne Uria.

Eighth grade 3.5 to 3.99 students are: Chance Bohr, Briana Cornwall, Hannah Gibson, Mikal Mackenzie, Kevin Abels Vaughan, Austin Emry, Esmeralda Jimenez, Trevor Meligan, Sierra Aberasturi, Erika Shanley, Blanca Uriarte, Joel Aguilera, Jose Albor, Peter Hellwege, Kali McRae, Ryan Vance, Rachelle Christoffersen, Rye Hyer, Rowdy Lair, Kelsey Thatcher, Haylie Freelove, Angelica Kirk, Cortnee Krzesnik, Ashley Thomson and Rodrigo Villarreal.

Fifth grade 3.0 to 3.49 students are: Casey Christoffersen, Dakota Frans, Rabecka Gay, Cristina Gonzalez, Jose Luis Cortez, Janett Hurtado, Gina King, Zachary Lowder, Kimberly McAbee, Mariah Moore, Miguel Bedolla, Jazmin Lopez, Guadalupe Macias, Zachary Mereness and Micheal Vigil.

Sixth grade 3.0 to 3.49 students are: Brook Fry, Ricardo Blanco, Marissa Ensley, Trevor Gibson, Maria Escutia, Tanne Lair, Odessa Miller, Aiesha Rodriguez (Zenor), Alicia Aguilera, Norma Bautista, Seaira Dougherty, Jonathan Gonzalez, Alexandra McRae and Luci Ortiz.

Seventh grade 3.0 to 3.49 students are: Karly Bertagnolli, Neil Doyle, Summer Megargee, Courtney Richter, Priscilla Sanchez, Alysssha Conant, Dylan Kushlan, Samantha Stutheit, Molly Cammack, Ana Maria Almaraz, Alexander Mereness, Edgar Ruiz, Aaron Wheeler, Jeffery Gay, Jacy Grimm, Reece Landa, Richard Lyon, Cynthia Nance, Bryan Reay, Liliana Alvarez, Eddie Garcia, Zachery Hayes and Chelsea Troxel.

Eighth grade 3.0 to 3.49 students are: Sean Daily, Shelby McCain, Abdencio Sanchez, Chalsea Hicks, Daniel Rodriguez (Zenor), Angelica Cuellar, Grant Sweet, Monica Hernandez, Ashli Kesler, Patricia Ramos, Gregory Truesdell, Jessica Hahn, Bianca Lira, Kelsey Martinat, Marissa Calderon, Damian Casarino, Kenny Cockrum, Daniel Esparza, Cheyanne Marshall, Chelsie Stansell, Ulysses Vargas and Taylor Vaughn.

From page 1

√ Patrons

Taylor said district clerk Catherine Sellman has 60 days to determine if the signatures on the petition are registered voters. She said another petition with 20 percent of the total amount of voters that voted in the original election would have to be submitted before a recall could be held.

√ Kroll

judge would not accept the plea agreement, Mr. Kroll had the opportunity to decide if he wanted to go ahead with the plea agreement. I think he basically determined that he needed to separate this individual from society for some time.”

Faulks said that if Kroll had not accepted the decision and he had changed his plea to not guilty, he probably would have been tried on the original charges.

“There was nothing out of this office that changed this decision,” Faulks said. “This was done in the court system. I am very satisfied with the end results. It still isn’t perfect, but this is some pretty serious time. Somebody here has been held accountable for their actions and I want other people to know, you don’t do that around here.”

Reports show that although Kroll does not have to register as a sex offender, he does have to submit to DNA testing. He also has a permanent no contact order banning him from contact with the victim forever. The judge also ordered Kroll to participate in a sexual intervention program at the penitentiary.

Faulks said Kroll was sentenced to the maximum extent of the law for felony injury to a child.

Gun Show

2005 SHOWS

Best Little Shows in Idaho

National Guard Armory • Homedale, Idaho

Feb. 19th & 20th 2005

Vendome Event Ctr. • Weiser, Idaho

March 5th & 6th 2005

HOURS: SAT 9-5 - SUN 9-3
Admission \$4.00 for 12 & Over

Buy • Sell • Trade

Guns, Knives & Collectibles

RAFFLE: RUGER .22 AUTO RIFLE

TICKETS: \$1 EA. OR 3 FOR \$2

AT EACH SHOW

FOR MORE INFORMATION CALL:

DON DAVIES - 208-465-9940

JANE AMOUREUX 208-324-2487

SPONSORS OF THE SHOW ARE NOT RESPONSIBLE FOR FIRE, THEFT, OR ACCIDENTAL INJURY.

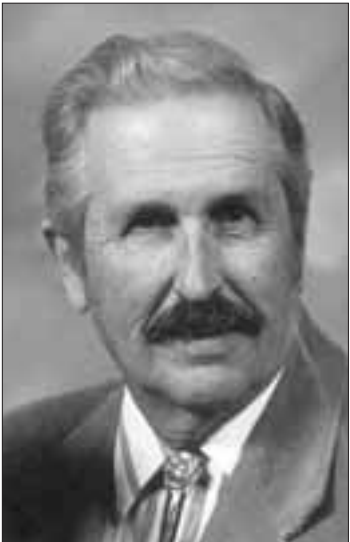
ALL STATE & FEDERAL LAWS ARE TO BE OBSERVED

Obituaries

Death Notice

Roger W. Hinton

Roger W. Hinton, 73, of Caldwell passed away February 11th at a Caldwell Hospital. Memorial services were held Tuesday at the United Methodist Church in Caldwell.



Ted K. Blackstock

Ted K. Blackstock, 70, of Opaline, near Givens Hot Springs, died Monday, February 7, 2005 at his home. A Mass of Christian Burial will be celebrated at 10:00 AM Thursday, February 10, 2005 at Our Lady Of The Valley Catholic Church, Caldwell followed by a luncheon at the Marsing Community Center. Father Francisco Flores will officiate. Private interment will be at the Marsing-Homedale Cemetery.

Mr. Blackstock was born June 5, 1934 in Nampa, a son of Adam and Mildred Blackstock. He attended elementary school in the Opaline Community and graduated from Nampa High School in 1952. Ted served in the United States Air Force and then attended college in San Mateo, CA. Ted married Mary Cain on April 10, 1958 in Burlingame, Ca. and the couple returned to the Opaline area to ranch.

Surviving in addition to his wife, Mary are children Ted S. and Mary M. Blackstock of Opaline, Barbara and Joe Dalsoglio of Boise, Matthew Blackstock of Boise, Gwendolyn and Tim Miller of Marsing and Joseph and Shannon Blackstock of Kuna; a sister and brother-in-law, Dianne and Louis Schutt of New Plymouth; ten grandchildren and several nieces and nephews. He was preceded in death by his parents and a sister, Elaine Rabb.

The family suggests memorials to the Ted K. Blackstock Memorial Scholarship Fund, in care of the Flahiff Chapel, P.O. Box 726, Caldwell, ID 83606 or to Our Lady of the Valley Catholic Church, Caldwell.



John (Johnny "K") William Krzesnik

John (Johnny "K") William Krzesnik was born June 5, 1929 in Caldwell, Idaho, the only son of John William and Anna (Jesenko) Krzesnik. Johnny's maternal grandparents were part of the original Austrian settlers who came to Homedale from Rock Springs, Wyoming in 1914.

At the age of seven months John's mother died and then he and his sister, Annie, stayed with the Jesenko grandparents and his two older sisters, Pauline and Mary, went back to Rock Springs with family members. John attended school in Homedale graduating from high school in 1947. He was active in sports through out his school years – baseball being his favorite.

In February of 1951, several years after graduating, John joined the Army serving with Company A, 322nd Signal BN in Frankfurt, Germany. He was honorably discharged in February of 1953.

John was a lifelong farmer, having purchased his original 40-acre farm in the mid 1950's and by early 1980's, he was farming 1200 acres. In 1986, his son, Darren, began farming by his dad's side.

On January 31, 1963, he married his wife of 42 years, Wilma Jean (Bowman). On April 20, 1965, their son, John Darren, was born and then on May 27, 1969, daughter Kerry Ann arrived.

Besides farming, John became a partner with his nephew, Jim Corta in Jim and John's Burger Den located in Middleton in 1979. In 1983, he and his stepson, Rick, purchased Homedale Feed Company.

When John wasn't busy running his farm, he could be found golfing, fishing, playing poker with friends, golfing, watching his kids and grandkids play sports, and golfing. When none of these were available, he would find his recliner and surf the channels looking for ballgames. In later years, John could be found most Sundays next to his wife in the fourth pew at the Homedale Nazarene Church.

Besides his wife, Wilma, and

family, John leaves behind many friends who will remember him fondly. John was a special man and his passing will leave a void in many lives. May his final destination have at least an occasional ball game!

John was preceded in death by his parents and his grandson, Randy Shanley. He leaves behind his wife, Wilma; his son, Darren (Sherri) Krzesnik; his daughter, Kerry Hibbs; and his stepson, Rick (Mil) Shanley; his grandchildren include: Kurt (Nicole) Shanley, Nick Shanley, Kyle Shanley, Trevor Krzesnik, Cortnee Krzesnik, Hayden Krzesnik, Emmet Hibbs and Elias Hibbs. He also leaves behind four great-grandchildren and his three sisters, Pauline Kovachic of Rock Springs, WY; Mary Soran of Caldwell; and Annie Davis of Homedale; and many nieces and nephews. He will also be greatly missed by his dear and loyal friend, Tom Pegram.

In lieu of floral memorials, the family requests that any donations be made to the Homedale Sundance park (baseball/softball programs), PO box 757, Homedale, ID 83628 or the Mountain View Church of the Nazarene, 26515 Ustick RD, Wilder, ID 83676

Funeral services were held at 11:00 AM Saturday, February 12, 2005 at the Mountain View Church of the Nazarene, Wilder. Interment followed at the Marsing-Homedale Cemetery, Marsing. Friends called from 4:00 to 8:00 PM today at Flahiff Funeral Chapel, Homedale.



Dora Upton

Dora Upton, 90, of Homedale passed away on Friday, February 11, 2005 at home of natural causes. Funeral services were held at 2:00 PM Monday, February 14, 2005 at Flahiff Funeral Chapel, Homedale. Interment followed at the Marsing-Homedale Cemetery.

Dora was born December 1, 1914 at Apache, Oklahoma. She spent a short time growing up in Oklahoma and Oregon. She then moved to Idaho in 1928 where she graduated from Nampa High School in 1933. Dora attended Business College, and was a bookkeeper until marrying Lorrain Upton in August 1941. Dora and Lorrain owned the Upton Apartments in Homedale. They traveled extensively throughout the Untied States, Canada, Europe, and China. She was full of life and energy, and spent many years in the service of the Eastern Star #83, and the American Legion Auxiliary #82.

She held the post of Worthy Matron several times, and was the past President of the American Legion Auxiliary. Dora and Lorrain didn't have any children, but her greatest passion was with the Jobs Daughters, who she always considered part of her family. Dora belonged to the Christian Church in Homedale, and was a member for over 50 years. She loved playing bridge, reading books, writing letters, camping out in the mountains, and taking long walks. One of Dora's favorite things to do was to pass out Juicy Fruit gum to all the little kids, and take them to the movies. Dora was a great cook, and made the best pies and cookies in the valley!

She set up a booth at Paul's Market with Martha and Rita, to sell raffle tickets for the Eastern Star. I'm sure Martha and Lorrain had the booth ready for her to sell tickets before she could to into heaven to see the rest of her family and friends.

She is survived by her youngest Brother Roy Jackson of Homedale; and many nieces and nephews. She was preceded in death by her parents, Clarence B Jackson and Nona Hawn, her husband Lorrian Upton, Dale Jackson, Paula Grimes, J.C. Jackson, Dollie Studer, Lucille Applegate and Flossie Brownson.

In lieu of flowers, please give to your favorite charity.

Family and friends were invited to a dinner at the Senior citizens Center, Homedale, following the interment.

February and March filled with FFA events

Many events are scheduled for the Marsing FFA program over the next few months from creed speaking to the annual agriculture expo, which is held in May.

Amy Beagley won this year's Marsing Creed Speaking contest at the BVD Creed Speaking CDE on Feb. 2. She placed fourth out of nine among the freshmen class at the BVD event.

Scott Roeser and MJ Usabel traveled to Mountain View High to interview for their Idaho FFA State Degrees.

"To receive a State Degree is a great accomplishment, and you must work very hard to receive the honor," FFA reporter Jessica Elsberry said.

Scott will receive his degree at the State Convention in April. MJ will be applying next year in an effort to accumulate more points for her project, putting her in better contention for a Star Farmer Award.

"As the month of May is right around the corner, our chapter is getting ready for the Marsing FFA Ag expo," Elsberry explained. "This year's chairman, Daniel Ineck, has been working with about ten different schools to schedule times when their students can come and tour the expo. At this time it looks like we should

have nearly 1000 students attending this year. The Ag expo is one of my favorite events, and one of the busiest."

Animals, farm safety videos, and ice cream highlight the event for all the kids that attend. This year the Marsing Ag expo is scheduled for May 5 and 6th. For more information or to schedule a tour, call Advisor Jason Nettleton at the FFA office.

"This year we have a great Parliamentary Procedure Team," Elsberry continued. "We are really excited to get started on competition. Last year we place third and we are setting the bar a lot higher this year. Lately eight members have been meeting Tuesdays and Thursday at 6:45am for practice."

This year's competition will be held at Meridian on March 5 and 6th.

The Ag fabrication class just finished making lawn sprinklers to donate to the Marsing Community Disaster Auction. Brooke Millet helped to raise over 120 dollars on just one sprinkler.

Upcoming events include, Legislative breakfast and day on the hill on Feb. 22. 15 members plan to attend, and will be getting an early morning start as they will leave at 5 a.m. This is a great op-

portunity to have breakfast with local legislators, tour agriculture businesses, tour the Capitol Building and explore opportunities in the local congressional office.

On Feb. 22 and 23, made for excellence and advanced leadership conference will be held at the Boise Holiday Inn Hotel. Four students are planning to attend and will stay in Boise for the event.

The first day will concentrate on developing leadership skills and discovering talents. The second day will have sessions on how to use the skills to receive excellence.

Feb. 24 and 25 is scheduled for the agriculture Olympics event. The event is an annual celebration, which pits FFA students against each other in Ag related competitions like roping, siphon tubes and an egg toss.

On March 11, the chapter work auction will be held in the Ag department. Those attending can buy a Marsing FFA member to work at their home or business for one day.

On March 29, the chapter will host Donkey Basketball against Marsing and Homedale firemen and the Homedale FFA Chapter. The game will begin at 6 p.m. and tickets will be sold at the door.

Buy it, sell it,
trade it, rent it...
in the

Classifieds!

For FAST results...
try the

Classifieds!

Triad seeks new members

Triad, is hoping to expand its membership and to gain additional members for its Homedale and Marsing group. Members met last week and discussed a variety of issues that have been plaguing the local areas.

Triad is a group of senior citizens who coordinate with local law enforcement officials to help reduce crime against senior citizens, help seniors deal with crime and victimization and to promote collaboration among law enforcement agencies. Current president Merrill Tallman said Triad's mission is to improve the quality of life for seniors in Owyhee County by enhancing the communication and cooperation between seniors and law enforcement.

The group was formed in approximately 1994 and had as many as 32 members, but now the membership has fallen to about a dozen. Tallman said the group participates in most events in the area and also patrols Jump Creek every evening. County Sheriff Deputy and Triad liaison Aron Streibel said since the group has been patrolling the area, crime and accidents have drastically dropped.

"We know we need some help from the mayors and from the paper to get some new members," Tallman said. "The more members we have, the more help we can be to the communities."

Each year the group also honors an employee from the Sheriff's office for the work they have done throughout the year. Last year, former deputy Don Collingwood was honored as employee of the year. A plaque with the employee's name is in the sheriff's office and the employee also receives a gift certificate and a plaque.

"We would like to get some more people from the Bruneau and Grand View area," Ervin Gifford said.

"We are supposed to be the eyes and ears for the sheriff's department," Peggy Tallman said. "If we see something going on that we know is not right we tell them. If we see drugs in the area, we tell them. You are going to find that some of the older people will not tell the sheriff's department because they don't want to bother them. But if you talk to them and show them that they are helping, they will talk to the sheriff's office."

For more information contact Tallman at 896-4004.

Weather

	H	L	Prec.
Feb 8	49	18	
Feb 9	50	12	
Feb 10	47	11	
Feb 11	49	11	
Feb 12	no	read	
Feb 13	no	read	
Feb 14	53	12	



FREE BEEF

With the Tires You Buy

Tires LES SCHWAB



ENTER TO WIN!

TEX Barbeque

Over 375 to be given away!

See Your Local Les Schwab Tire Center for Details

PASSENGER TIRES

STARTING AT 19.99

165/80R-13

LOW COST ALL SEASON PASSENGER CAR RADIALS

This Is An Excellent Value On Highway and All Season Radials. Offering A Smooth Quiet Ride And Tough Steel Belt Construction, It Comes With The Les Schwab Written Warranty At No Extra Charge

GREAT VALUE

SIZE	SUPERMARKET PRICE	SIZE	SUPERMARKET PRICE
165/80R-13	19.99	165/70HR-13BW	32.77
P165/80R-13	28.23	175/70HR-13BW	31.86
P165/80R-13	30.21	185/70HR-13BW	34.53
P175/80R-13	30.60	185/70HR-14BW	36.95
P185/80R-13	32.35	195/70HR-14BW	39.20
P185/75R-14	33.42	205/70HR-14BW	41.98
P195/75R-14	34.41	P205/70SR-14	48.02
P205/75R-14	35.75	P215/70SR-14	50.33
P215/75R-14	38.83	P205/70SR-15	49.99
P205/75R-15	37.86	205/70TR-15BW	43.04
P215/75R-15	39.19	P215/70SR-15	52.77
P225/75R-15	41.59	P215/70TR-15BW	47.34
P235/75R-15	42.47	P225/70SR-15	54.81

TREAD MAY VARY FROM PHOTO

PICKUP/SUV TIRES

LOW COST ALL SEASON PICKUP & SUV RADIALS

STARTING AT 68.49

P235/75SR-15 B

PLUS FREE BEEF

SIZE & LOAD RANGE	SUPERMARKET PRICE
P235/75SR-15 B	68.49
P245/75SR-16 B	77.86
P265/75SR-16 B	97.61
LT215/75R-15 C	70.86
LT235/75R-15 C	73.33
LT225/75R-16B/W D	79.58
LT245/75R-16 E	85.64
LT255/70R-16 C	106.19
LT235/85R-16B/W E	86.12
30/9.50R-15 C	81.09
31/10.50R-15 C	84.49
PLUS FET	

ALL SEASON STEEL BELTED RADIAL

These Low Cost All Season Radials feature outlined white letters in select sizes and are economically priced. They are a great value.

ALPHA 365

FREE

MOUNTING • ROTATIONS
ROAD HAZARD
FLAT REPAIR • AIR CHECKS

Featuring Steel Belted Construction for tread stability and better handling.

- 5 RIB ALL SEASON TREAD
- MULTI-SIPED TREAD DESIGN FOR BETTER TRACTION

SIZE	SUPERMARKET PRICE	SIZE	SUPERMARKET PRICE
P165/80R-13	37.97	P225/75R-15	55.79
P165/80R-13	39.99	P235/75R-15	57.32
P175/80R-13	40.48	P185/70SR-14	50.34
P185/80R-13	42.43	P195/70SR-14	52.35
P185/75R-14	43.35	P205/70SR-14	55.56
P195/75R-14	46.04	P215/70SR-14	58.32
P205/75R-14	46.65	P205/70SR-15	56.78
P215/75R-14	48.75	P215/70SR-15	59.92
P205/75R-15	49.95	P225/70SR-15	63.37
P215/75R-15	51.77		

WILD COUNTRY XTX

ALL SEASON STEEL RADIALS

Attractive outlined white letters. Features a deep tread design for longer mileage. M & S rated with a smooth, quiet ride.

SIZE & LOAD RANGE	SUPERMARKET PRICE	SIZE & LOAD RANGE	SUPERMARKET PRICE	SIZE & LOAD RANGE	SUPERMARKET PRICE
P205/75SR-15 B	76.06	LT265/75R-16 C	124.62	LT255/70R-16 C	144.64
P215/75SR-15 B	81.89	LT265/75R-16 D	135.15	LT265/70R-17 C	156.39
P225/75SR-15 B	84.04	LT265/75R-16 E	153.97	LT215/85R-16B/W D	118.71
P235/75SR-15 B	83.68	LT285/75R-16 D	158.24	LT215/85R-16B/W E	125.60
P265/75SR-15 B	95.12	LT315/75R-16 D	189.62	LT235/85R-16B/W E	124.23
P225/75SR-16 B	96.70	P225/70SR-15 B	97.31	LT235/85R-16 E	133.84
P235/75SR-16 B	90.93	P235/70SR-15 B	90.15	LT255/85R-16 D	165.83
P245/75SR-16 B	93.23	P245/70SR-15 B	95.73	30/9.50R-15 C	116.52
P265/75SR-16 B	103.93	P255/70SR-15 B	98.11	31/10.50R-15 C	117.45
LT215/75R-15 C	107.59	P225/70SR-16 B	94.74	32/11.50R-15 C	136.89
LT235/75R-15 D	107.65	P235/70SR-16 B	99.50	33/12.50R-15 C	157.84
LT225/75R-16 D	123.25	P245/70SR-16 B	104.27	35/12.50R-15 C	179.96
LT225/75R-16 E	133.54	P255/70SR-16 B	104.69	33/12.50R-16.5 D	181.91
LT245/75R-16 C	129.69	P265/70SR-17 B	117.73	35/12.50R-16.5 D	200.30
LT245/75R-16 E	131.45	LT235/70R-16 C	136.30	PLUS FET	

SPECTRUM

FREE

MOUNTING • ROTATIONS
ROAD HAZARD
FLAT REPAIR • AIR CHECKS

This great looking tire has an S performance rating and a 70,000 mile warranty, providing quality at an excellent price. If you're after performance, you'll get it with the 60/65 series. They're a sharp looking T-rated performance radial. It's a great value.

SIZE	SUPERMARKET PRICE	SIZE	SUPERMARKET PRICE	SIZE	SUPERMARKET PRICE	SIZE	SUPERMARKET PRICE
P165/80SR-138/W	46.23	P235/75SR-15	82.85	P205/70SR-15	83.74	P215/65TR-16B/W	108.79
P165/80SR-138/W	50.78	P175/70SR-138/W	52.64	P215/70SR-15	86.28	P185/60TR-14B/W	76.46
P175/80SR-138/W	53.76	P185/70SR-138/W	56.36	P225/70SR-15	89.14	P195/60TR-14B/W	80.62
P185/75SR-14	63.27	P185/70SR-14B/W	59.84	P175/65TR-14B/W	80.46	P185/60TR-15B/W	82.31
P195/75SR-14	66.65	P185/70SR-14	70.81	P185/65TR-14B/W	83.70	P195/60TR-15B/W	84.78
P205/75SR-14	71.11	P195/70SR-14B/W	62.98	P195/65TR-14B/W	87.09	P205/60TR-15B/W	95.59
P215/75SR-15	73.72	P205/70SR-14B/W	67.99	P195/65TR-15B/W	91.63	P205/60TR-16B/W	103.06
P225/75SR-15	76.48	P205/70SR-14	80.45	P205/65TR-15B/W	95.26	P215/60TR-16B/W	106.14
		P215/70SR-14	85.53	P215/65TR-15B/W	99.21	P225/60TR-16B/W	111.38

PERFORMANCE TIRES

GREAT BUY

These are GREAT BUYS on 65/60/55/50/45/40 35/30 SERIES RADIALS

These performance radials offer attractive design at an excellent price.

TREAD MAY VARY FROM PHOTO

SIZE	SUPERMARKET PRICE	SIZE	SUPERMARKET PRICE	SIZE	SUPERMARKET PRICE
165/65TR-14 C	29.67	205/60HR-15	49.39	255/50VR-17	220.24
175/65HR-14	34.56	215/60HR-15	49.20	205/45ZR-16	77.67
185/65HR-14	37.15	225/60HR-15	52.43	215/45ZR-17	90.27
195/65HR-14	40.83	215/60HR-16	52.36	225/45ZR-17	94.08
215/65HR-14	44.84	225/60HR-16	54.53	235/45ZR-17	107.51
185/65HR-15	39.72	195/55VR-15	55.83	245/45ZR-17	103.31
195/65HR-15	41.66	205/55VR-15	58.59	205/40ZR-16	74.60
205/65HR-15	45.97	205/55VR-16	65.26	205/40ZR-17	78.84
215/65HR-15	50.14	205/55ZR-16	74.73	215/40ZR-17	88.46
175/60HR-13	33.23	215/55ZR-16	107.68	255/40ZR-17	111.48
185/60HR-13	37.42	225/55VR-16	66.13	215/40ZR-18	128.99
205/60HR-13	41.18	195/50VR-15	52.94	225/40ZR-18	131.20
185/60HR-14	38.48	205/50VR-15	56.64	245/40ZR-18	140.19
195/60HR-14	42.66	195/50VR-16	59.26	215/35ZR-18	124.42
205/60HR-14	45.48	205/50VR-16	65.30	245/35ZR-18	132.51
195/60HR-15	43.92	225/50VR-16	68.35	255/35ZR-20	242.21

Ask About the LES SCHWAB WARRANTY

Up To \$200 of Valuable Services

FREE WITH THE TIRES YOU BUY

ROAD HAZARD • MOUNTING
FLAT REPAIR • ROTATIONS
AIR CHECKS

Why in February do we offer FREE BEEF with the tires you buy?

Les Schwab started it 41 years ago as a way of saying "Thank You" to our customers and to support our farmers and ranchers.



Phil Wick
President
Les Schwab
Tire Centers

CREDIT

THE LES SCHWAB WAY

90 DAYS SAME AS CASH O.A.C.

ENDING MONTHLY BALANCE	MINIMUM PAYMENT
\$0.01 - \$10.00	BALANCE
\$10.01 - \$50.00	\$10.00
\$50.01 - \$100.00	\$15.00
\$100.01 - \$250.00	\$25.00
\$250.01 - \$500.00	\$50.00
\$500.01 - \$1,500.00	\$75.00
\$1,500.01 - \$2,500.00	\$150.00
OVER \$2,500.00	1/3 OF BALANCE

Ask store for details.
Payment programs on approved credit.
Monthly percentage rate of 1.5%
18% per annum.

LES SCHWAB TIRE CENTER

HOMEDALE - 337-3474 • MARSING - 896-5824

The Owyhee Avalanche

Owyhee County's best source for local news!!



International cuisine

Several hundred people enjoy international cuisine during the 44th annual International Smorgasbord at Homedale Elementary School Saturday. An art show and local entertainment set the stage for the day-long event.

Smorgasbord art show winners announced

The winners of this year’s International Smorgasbord were announced Monday. Artists entered their work under a variety of categories. First, second and third place winners were announced as well as the grand prize, people’s choice and honorable mention winners.

This year’s judge was Kyla Sorenson who is a 2004 graduate from BSU. She earned her Bachelors of Fine Art with a Degree in Art Education. She is currently working as a professional photographer for Hill Photography in Kuna.

Winners were as follows:

Elementary category, people’s choice, Karissa Webb “Get Away from the Turkey, Cat!” Grand prize, Karris Webb “Get Away from the Turkey, Cat!”

First place, Karris Webb “Beautiful Princess,” second place Hailee Aberasturi “Great Harned Sheep,” and third place. Makayla Aberasturi “Sehra.”

Middle School, people’s choice, Hannah Gibson Johnson for symmetry face drawing of Hilary Duff. Grand prize, Hannah Gibson Johnson “Dot Drawing-Girl.”

First place Hannah Gibson Johnson “Hilary Duff,” second place Jamie Fraire “Dot Drawing,” and third place Katie Holloway “Dragon.”

High School, people’s choice, Young Min Moon, “Tigers in the Jungle.” Grand prize, Mark Vance “Cost of arms.”

First place Joshua Myers “The Long Trail Home,” second place Emily Verwer “Emily A. Verwer,” and third place Kelsey Silva “Lil Sis.”

Adult, Vanessa Lootens “Horse Kisses.” Grand prize, Gregg Garrett “The Look.”

First place Vanessa Lootens “Girl with Horse,” second place Helen Seward “Cowboy & Horse,” and third place Zelda Harman “Pink Flamingo.”

Three-dimensional work, adult grand prize, Bok Chun Pork “Water Container.”

High School grand prize Joshua

Myers “Ernie the Carpenter.” First place T.J. Myers “Pheasant Flight,” second place Mark Vance “Memories Bowl,” and third place Joshua Myers “Lighthouse on the Rocks.”

Middle School grand prize Megan Harper “Meadow Daisy.” First place Brandon Valodez “Mask,” second place JoeMac Hernandez “Superhero,” and third place Hannah Gibson Johnson “Cowgirl.”

Elementary division, grand prize Nash Johnson, “Mask.”

Honorable mentions: elementary, Nash Johnson “Dragsters,” Makayla Aberaturi “Bighorn

Sheep,” Middle School, Taylor Vaughan “Baby,” Megan Harper “Fence,” Fabian Garcia “Man,” Kortney Stansell “Dog,” Jeff Karasko “Balancing Art,” and Megan Quintana “Dashhoard.”

High School, Shanea Galloway “Resting Cat,” Emily Verwer “Little Angle Girl,” Emily Cox “Clouds Reflecting,” Samuel Sanchez “MarioPopoart.” Kimberly Pershall “ARoma Thereby,” Kalon Lord “Chris Farly,” Jessica Ryan “Princess Diana,” Danyel Bernard “Marquise,” Karina Agulara “Angels,” and Young

Min Moon “Teapot.” Adult, Charlene Henshaw “Tober Morey Harbor,” Vanessa Lootens “Girl with Horse,” Charlene

Henshaw “Dream Sunset,” Betty Freeburg “Hummer & Roses,” Betty Freeburg “Pumpkin,” and Lucille McKinley “Leopard.”



Come in and see your local boy...

JEFF CHRISTOFFERSEN

For all your special building needs!

- Pole barns - remodels - cabinets - etc. -

4523 E. Cleveland • Caldwell • 454-8626 • cell 941-5563

The Choice Has Never Been So Clear!

Go to:
www.medicare.gov/MPPF

There is no better time than now to evaluate the health care options available to you. It's easy—just go to Medicare's Personal Plan Finder. This site can objectively help you choose the Medicare plan that best suits you. This tool will ask you a few questions then give you a personalized report of the health plans available in your area.

Each year Medicare samples all plans. In our region, True Blue received the highest rating for health plans, health care, specialists, customer service and more.* True Blue not only provides you with one of the most cost-effective plans but delivers one of the highest rated services available in Southwest Idaho!

If you don't have access to the Internet just call and we can help you complete a comparison over the phone.

Join True Blue to have access to these benefits:

- \$70 monthly premium
- No deductibles
- \$10 primary care co-pay
- \$1,000 in annual preventive and basic dental services
- Vision and hearing aid
- Worldwide coverage
- \$20 specialty care co-pay
- Travel benefit

BlueCross® of Idaho   **TrueBlue.**
An Independent Licensee of the Blue Cross and Blue Shield Association
a Medicare Advantage Plan

395-8200 or 1-888-494-2583

TDD/TTY for the hearing impaired: 1-800-377-1363

Now Serving: Southwest Idaho

* 2003 Medicare Managed Care CAPHS Survey conducted Oct. 2003-March 2004. Fourteen Plans sampled regionally.

Seating is limited!

Call to reserve your seat for a FREE meal to learn more about True Blue at one of these meetings:

02/17/05 Golden Corral, Boise at 11:00 a.m.

03/01/05 Dutch Inn, Nampa, at 11:30 a.m.

03/08/05 Golden Corral, Boise, at 6:00 p.m.

03/10/05 Elmer's on Fairview, Boise at 11:00 a.m.

03/15/05 Perkins on Broadway, Boise at 11:00 a.m.

In-home appointments also available!

True Blue is an MA plan with a Medicare contract. Beneficiaries must continue to pay the Part B premium. A sales representative will be present with information and applications. For accommodations of persons with special needs at sales meetings call 395-8200. Please contact True Blue for details.

Wilson Butte 4-H update

by Lacey Usabel

The Wilson Butte Dairy 4-H Club is anxiously waiting to pick up their dairy heifers from Mann's feedlot in Parma. The heifers are part of the Treasure Valley Dairy Replacement heifer program.

Mann's Feedlot helps the kids AI their heifers. The heifers will calve in September or October after they are sold at the Western Idaho Fair. Each heifer is weighed, wormed, vaccinated and given a magnet prior to entering the feedlot.

Wilson Butte 4-H Dairy Club members are Dylan Cady, Josie Grim, MaryJo Usabel and Lacey Usabel who said they are very thankful to the dairymen and everyone involved in the T.V.D.R.H.P. They said they would always cherish their learning experiences and memories of their 4-H dairy heifer projects.

Club members will use the money from the sale of their heifers for college expenses or to buy a pickup, computer or more heifers.



Gateway grill

Silvia Capouch stands in front of her new restaurant, Gateway Grill which features a variety of grilled foods for breakfast and lunch dining.

Gateway Grill opens in Marsing

A new restaurant has opened in Marsing and offers patrons a full breakfast and lunch menu.

The Gateway Grill is located at 208B Main Street and replaces Donna's Bakery and Oven and is operated by Silvia Capouch who has been in the area for about eight years.

Capouch said she operates the restaurant Tuesday through Saturdays and is open from 6 a.m. until 2 p.m. and until 3 p.m. on Sunday. She said she also works part-time as a real estate agent for Coldwell Banker in Marsing.

Homedale Senior Center

Feb 16: Chicken chow mein, fried rice, milk.

Feb 17: Hot turkey sandwiches, mashed potatoes, peas & carrots, milk.

Feb 19: Valentine Senior Dance 7pm till 10pm \$3 per person. Bring finger food. Will have music.

Feb 22: Philly cheese steak sandwich, tossed salad, milk.

Feb 23: Soft shell beef tacos, jello, milk.

Bingo every Friday night 6:30-8:30. 25¢ per card, cash prizes, free popcorn & coffee.



First place winners

Elisa Eiguren and Luisa Lowry both brought home first place banners from their wins in the Snake River District Career Development events last week in Ontario.

JV FFA members win career development events

On Feb 2, the Jordan Valley FFA Chapter traveled to Ontario to compete in the Snake River District Leadership Career Development Event. Jordan Valley members that competed included: Athena Beckwith and Elisa Eiguren in the FFA Creed Speaking, Luisa Lowry in the Sophomore Public Speaking,

The Jordan Valley FFA Officers: Emil Scown, Shane Smith, Kayla Brown, Jerry Wroten, Frank Beckwith and Megan Mackenzie

competed in Advanced Parliamentary Procedure, and first year FFA members Luisa Lowry, Bailey Kershner, Elisa Eiguren, Sequoi Trautman, Lacey Kershner, Athena Beckwith competed in the Beginning Parliamentary

Procedure contest.

"I'm proud of all my students that competed, they all did well in their events," FFA advisor Adam Ineck said. "I'm anxiously looking forward to next years Career Development Events."

Community pit to be established for decorative rock

A new public source of decorative rock is being established in Owyhee County by the Bureau of Land Management's (BLM) Boise District. The new Horse Trap Community Pit will be located 19.5 miles south of Bruneau, east of Highway 51 on Missile Base Road.

Boise District Geologist, Bob Harrison said, "Platey rhyolite, which is a decorative rock suitable for landscaping, will be available at this pit. The rock colors vary from dark brown to rust to a lighter tan."

This site is being established for non-commercial purposes. Commercial permits will not be issued for this location. Rock permits for this site will cost \$20 per ton of rhyolite rock and will be available after March 31, 2005. The public can purchase rock permits at the BLM Boise District Office, located at 3948 Development Avenue, Boise, Idaho 83705, or by calling (208) 384-3300.

"Please help protect our public land resources by reporting unauthorized activities to the BLM", Harrison said.

Wilder family receives Red Cross help after fire

The American Red Cross of Greater Idaho assisted Miguel and Anna Gonzalez and their two children after fire damaged their home just outside of Wilder. The fire originated in the chimney and smoldered for some time before it was detected the morning of February 8th. Anna was at work, and Miguel—who had just returned from taking the children to school when the fire broke out—was able to escape without injury. A fire crew was quickly on scene and was able to contain most of the damage to the kitchen area.

Red Cross volunteer Ann Steele met with the family on February 9th to assess their losses and provide assistance. The family received Red Cross assistance to replace food items lost in the fire. Clothing and essential items were not destroyed in the blaze, and the landlord has secured temporary lodging for the family while repairs are made to the home.



The Clinic at Wilder

215 3rd St. (Next to City Hall) • Wilder, ID 83676

Healthcare for your entire family

- Well Child Exams • Women's Health
- Sports Physicals • DOT Physicals & Drug Testing
- Adult physicals • Immunizations
- Minor Illness Care • Chronic Condition Care

ACCEPTING NEW PATIENTS

Call 482-7430 for appointment

Renee Kindler, FNP ♦ Kelly Pesnell, FNP

WE CAN HANDLE ALL YOUR HEATING & COOLING NEEDS!

RESIDENTIAL OR COMMERCIAL

ALL TYPES OF FURNACES:

OIL - GAS - ELECTRIC - HI TECH

Heat Pumps • Air Conditioners • Boilers • Humidifiers

Water Heaters • Fireplaces (Wood or Gas)

Air Cleaners • Central Vacuum • Sheetmetal

SPECIALIZING IN OIL FURNACES



Residential

Commercial

Greg Kelly

Homedale • 337-5812

573-1788 • 573-1886

24 HOUR
Emergency Service



Heating & Cooling Systems

Ben & Lori Badiola / Owners



Defender

Jessica White a 5'6" Mustang, works around Crane during a girls basketball game last week.

Mustangs lose nail biter to Leopards

by Angela Larsen and Paul McKay

On Tuesday, February 11, the Jordan Valley Lady Mustangs hosted a tough and intense basketball game against the Cove Leopards. By the end of the first quarter, the score was 13 to 10 with the Mustangs leading. The game could only get more intense from then on. Both teams went to the locker room at half time leaving the score at a seven-point lead for the Mustangs. But Cove did not give up. They were hoping to go home with a win that would put them into districts. At the start of the fourth quarter, the score was 31 to 39. The Mustangs thought that they had it won. But the game was not up yet and Cove still had a chance. Somehow the Leopards took their own game up a notch and had an awesome come back. With about one minute to go, the score was then 47 to 44. Cove was now the leader of the game. The Mustangs called a time-out and talked out their plan. It was their ball and they were ready to score. They raced down court, passed the ball well, and got a drive. Now they were only down by one point. Cove took the ball down the court. Mustang, Lauren Cuvelier, stepped up and smacked the ball out of their hands and through it down-court to Mustang, Angela Larsen for the lay-in. With three seconds to go; the ball goes up, but bounces off of the rim into the hands of another Mustang, Jessica Davis, who shoots it up through two defenders but unfortunately, misses. The buzzer goes off and Cove goes home with a win that will put them into districts for third place. The Mustangs had enough wins in the beginning of the season to be able to go in fourth and play Crane for their first game. The high scorers for the game were Cuvelier with 21 points and Larsen with 16. Cove Leopard Christina McGilvray scored 13 points, and Cassie Mills recorded seven. "It was a disappointing game. We had our opportunities to win but did not grasp firmly to them. I hope that we are able to show our abilities in district and take a couple wins there," Said Coach Jeremy Chamberlain Powder Valley traveled to Jordan Valley on Feb. 12 for an important game. The Mustangs had a lot riding on this game. The entire weekend determined whether or not and in what place the Mustangs would go to districts. The varsity girl's final score was 47-37 favoring Powder Valley. Bailey Kershner scored 16 points, Breann Hipwell 2 points, Michelle Elsner 3 points, and Angela Larsen 10 points. At half time the score was 17-22 favoring Powder Valley. "I thought we played really well compared to the last time we played them but feel we could improve in the future" said Mustang Michelle Elsner. Powder Valley had some pretty good scorers. Bingham scored 16 points followed by Miller with 15 points. Because of the outcome of the games this week the Mustang girl's basketball team will be going to districts in fourth place. They will play the first place team Crane, in Baker on Feb. 17.

Mustangs stopped by Cove late rally

by Tim Eiguren and Cassia Trautman

The Cove Leopards traveled to Jordan Valley on Friday to play the Mustangs in boy's basketball. The game was in favor of the Mustangs until the fourth quarter when the Leopards pulled ahead and stayed ahead. The Mustangs were leading in the first three quarters with scores of 6-6, 21-26, 35-37. Then the Leopards clawed past to finish with a score of 47-44 in favor of Cove. The Mustangs played a good game but were unable to hit many of their shots and couldn't capitalize on some opportunities. The Leopards played well on both ends of the court and came out with the win. Pat Anderson was effective underneath the basket. He was the leading scorer for the Mustangs with 14 points. Jerry Wroten followed close behind with 12 points. Shane Smith and Paul Elsner each had seven points and TJ Stubbs contributed four points. Frank Beckwith was sick that night, so it left the Mustang short one player. With only seven players the effort was there, but the final score just didn't go their way. On Saturday Jordan Valley played the Powder Valley Badgers. The boys had a two-point lead in the third quarter, but ended up losing by eight points with a final score of 48-40. High scorers were Paul Elsner with 12 points, Jerry Wroten and Pat Anderson with 9 points. TJ Stubbs contributed 6 and Shane Smith had 3. This week the Mustang will go to Baker for the district playoffs.



Block

Pat Anderson blocks against Cove during a boys basketball game last week.



On the mats

Frankie Obregon wrestles a Middleton Viking wrestler in a junior varsity match Friday night. Photo by Jeremy Hall.

Trojans slam Melba and Middleton on the mats

Homedale gave up two matches on the mat to beat the Melba Mustangs 60-9 in wrestling last week. Homedale hosted Middleton for its senior night Friday and sent the Vikings home with a 55-9 loss. Homedale picked up six pins against Melba and five pins against Cambridge on Tuesday and gave up one forfeit and one match on the mat against Middleton. Jeremy Ensley, Stuart Miyasako, Ricco Gonzalez, Justin Mashburn and Erik Garcia pinned their way through Middleton. Major decision winners were Tyler Christoffersen, Brian Martinat, Marcus Eby and Tyler Maxwell. "These two matches were a great way to end the regular season," Coach Toby Johnson said. "We are 18-6 currently and are looking forward to district. The boys wrestled very well this week in two nearly perfect duals. Hopefully this will give us some momentum going into district." Against Melba, Jeremy Ensley remained undefeated by pinning Zane Brown. Teammate Marcus Eby pinned Joel Hagaman and Maxwell pinned Brian Arent. Gonzalez pinned Mike Hagaman and Josh Jolley scored on a pin over Ben Pratt. Kerek Sitko pinned Colter Smith at 215 pounds. District competition begins this week at Fruitland High School on Feb. 18 and 19. The state tournament will be held at the Idaho Center on Feb. 24, 25 and 26.



Honoring a fan

The Homedale Junior Varsity basketball team honored John "Johnny K" Krzesnik by embroidering his name on the right leg of their game uniforms. Johnny K, a longtime local farmer and avid Homedale sports fan died last week after a brief illness. The Junior Varsity team played an inspired game in his honor, defeating McCall, 54-25. Photo by Gregg Garrett.



Offense

Breeana Chadez looks for an opening against Nampa Christian during the team’s final district girl’s basketball game in Homedale last week. Nampa Christian took the Huskies out of the competition and a trip to the state tournament. Photo by Jeremy Hall.

NC Trojans end season for Marsing Huskies

The Nampa Christian Trojans ended the season for the Marsing Lady Huskies with a 56-38 victory in district girl’s basketball last week.

Marsing started the tournament with a win over Parma 48-37, but went into the losers bracket after being beat by Melba 58-47 and its final loss to Nampa Christian on Feb. 8.

“We played pretty good against Parma,” Coach Don Heller commented. “We held the lead the entire game. Our press worked well. We felt good heading into Saturday’s game against Parma.”

Breeana Chadez led Marsing with 17 points and five rebounds. Mollee Nielsen scored nine points and took four steals.

On Feb. 5, the Huskies faced the Melba Mustangs at Homedale High School. But slow momentum in the beginning quarters held Marsing in the loss.

“We started this game playing our worst first quarter of the season,” Heller said. “The first quarter score was 4-20. The third quarter we started at 20-36. We then woke up and began to play. Our intensity picked up and we played great the rest of the game. Two times, we had the lead down to nine points, but something out of our hands would slow the momentum. I was very happy with how we finished the girl’s never gave up.”

MJ Usabel led with 15 points and 10 rebounds and Chadez added 14 points and six steals.

“This game with Nampa Christian just never developed,” Heller commented “After our finish with Melba and a great Monday practice the coaches thought we had a great chance. The girls came out very sluggish and we never got anything going. It was a tough way to finish the season.”

Chadez had 14 points, six rebounds and five steals. Nielsen took eight rebounds and made three assists.

“The bright spot for the season is that we have no seniors and we played everyone tough all season.” Heller continued. “Our junior varsity team made tournament for the first time in 15 plus years and they had a great season. If we can get the parents to support the girls this summer we should have a great chance to be very successful next season. I would like to thank my assistant coaches, Jodette Cooney and Wendy Heller, the parents and all the community for their help and support this season.”

Trojans finish regular season number three seed

Homedale beat the McCall Vandals 61-51 in its final game of the season last week. The Trojans will go into the district tournament as the number three seed and faced the Vandals again in the first round Tuesday night in Fruitland.

The game marked the last home game for Homedale and senior night for the Trojans. Homedale finishes with a 16-4 overall and 6-4 conference record.

It was mixed emotions because of senior night, but we also were dealing with the death of a loyal fan,” Coach Randy Potter said. “It was kind of hard. We played hard in Weiser on Friday and got a little banged up.”

Homedale lost to Weiser 64-58 Friday night.

Nick Williams led the Trojans with 17 points as teammates Erik Corbet scored nine points and Luis Escutia sunk 10 points. Brett Hopkins sunk two three-point baskets for six points.

“The teams are extremely close,” Potter said. “We don’t have anyone top to bottom who is super run away with the title or anyone who can be overlooked. We play McCall in the opener, but they could come back to get us. If we make it to the end of next week, the tournament changes to Treasure Valley Community College at the end of the week.”



Senior night

Nick Williams led Homedale’s scoring with 17 points in the Trojan’s final home game against McCall. It was senior night for the varsity players as they beat McCall, 61-51. District play will begin this week. Photo by Gregg Garrett.

Colts lose to Panthers

by Lauren Cuvelier

The Jordan Valley Colts traveled to Huntington last Friday. The varsity girls were met with a determined team of Panthers and the game ended with Huntington on top. The score was 12-16.

Catie Kershner led the Colts with 8 points whereas Emma Johnson and Nickie Naegle both added 2 points. Kershner had 6 rebounds and 2 steals, Johnson stole the ball four times while Naegle had 7 rebounds, 3 steals, and 3 assists.

Head coach Melinda Cuvelier said, “We looked slow on the court but the girls did real well with their transition from offense and defense.”

After the game Nickie Naegle was asked what she thought was the reason why the girls had a poor game and she replied, “None of us really felt very good.”

The Junior Varsity played a quarter after the Varsity game and won, 3-0. Cassandra Rose made all 3 of the Colt’s points.

On Saturday, February 12, the junior varsity hosted Arock. The Colts won, with a score of 25-9. Michelle Tellaria had 8 points; Anne Marie Eiguren, Shelly Payne, Cassandra Rose, and Haley Hebison all made 4 points each; and Megan Fillmore added a free throw.

The Colts will compete at the Huntington Tournament next week.



Save

Varsity player Erik Corbett makes a spectacular pass behind his back to save the ball from going out of bounds during second half action against McCall. Photo by Gregg Garrett.

Middle school Trojans split games

The Homedale Middle School Trojans' 8th grade team split last week's games. They lost to a very good Middleton team 34-51 and beat Nyssa 62-31.

Grant Sweet led the Trojans in scoring with 8 points, Rodrigo Villarreal and Austin Emry chipped in 7 and 6 respectively. Austin Emry pulled down 9 rebounds, but it wasn't enough as Middleton had a height advantage over the Trojans and they used it well.

On Thursday, the 8th graders rebounded from the Middleton loss to soundly defeat Nyssa 62-31. Austin Emry had 22 points and 16 rebounds and Rodrigo Villarreal pulled down 16 rebounds. Ryan Garrett contributed 12 points and Grant Sweet helped the Trojan cause with 10 points

and 7 rebounds.

The Tros hope to continue the winning as they travel to McCall on Thursday.

The 7th graders lost to Middleton in double overtime on Tuesday by 3 points, 28-25. Reece Landa led the Trojan scoring with 13 points. Christian Cahill and Ryan Ryska helped him out with strong rebounding by Jake Tolmie and good defensive play.

The 7th graders traveled to Nyssa on Thursday for a non-league game and were beaten soundly, 56-16.

This week the 7th graders traveled to Weiser on Tuesday and will host McCall on Thursday.

The B team lost to Middleton in a close game and lost to Nyssa by 2 points. Dylan Kushlan and

Jose Gonzalez kept the Trojans close, along with heady play by Drew Farwell and Kevin Dillon. The B team kids are coached by Dave Kushlan, and are improving each week.

at right:

Junior varsity action
McCall players surround Matt Holloway during junior varsity boys basketball action. Photo by Gregg Garrett.



THE BUSINESS DIRECTORY

CERTIFIED LOCKSMITH  HARVEY'S AUTO PARTS LOCKSMITH & TOWING KEYS MADE • LOCKS REPAIRED EMERGENCY OPENINGS 211 MAIN ST. MARSING, ID • 896-4643	ELECTRICIAN  H&H ELECTRIC Serving Owyhee County for 25 years Jeff Haylett 337-4881	SAND & GRAVEL  Owyhee Sand, Gravel & Concrete 337-5057 573-2341 • 573-2343 • 573-2339 HOMEDALE, IDAHO ALL TYPES OF ROCK & DIRT STATE CERTIFIED DRAIN ROCK FREE ESTIMATES ON ROADS & DRIVEWAYS <i>Chuck, Ray & Bill Maxwell</i>	ELECTRICIAN  Pioneer Electric Commercial, Residential, Industrial, Service Providing you courteous and quality service 24 Hour Emergency Service Ahmad Gohrangi C-31381 Office - 495-2379 Cell - 850-3270	ACCOUNTING  BOWEN & PARKER Mikeal D. Parker, CPA • 19 E. Wyoming • P.O. Box 905 • Homedale, ID 83628 337-3271 Ron V. Bowen, CPA • 624 16th Ave S. • P.O. Box 41 • Nampa, ID 83653 467-6900
CARPENTRY I HAVE JUST MOVED MY BUSINESS TO WILDER. WE'VE BEEN SERVING CANYON COUNTY FOR THE PAST 11 YEARS. WE WELCOME YOUR BUSINESS. CALL FOR FREE ESTIMATES. NO JOB TOO SMALL. BOB PAASCH 482-7204 BOB'S CARPENTRY	HAIR • NAILS • TANNING  The Hair Depot <i>Chris Bahem</i> 102 E. Wyoming • Homedale (Just East of Paul's Market) 208-337-HAIR (4247) Hair • Nails • Tanning	CHIROPRACTIC Marsing CHIROPRACTIC Dr. Kathleen Mckay-Zahedi OPEN MOST SATURDAYS Normal office visits: \$25 Walk-ins welcome! Back to work and play fast! Office 208-896-5520	SPORTING CLAYS  IDAHO SPORTING CLAYS 337-4826 3 Miles south on Hwy. 95 from Homedale, turn West on Graveyard Point rd., go 4 miles and turn South on Sage. Go over the first hill and we're on the left. GIFT CERTIFICATES AVAILABLE	CONSTRUCTION R^{BAR}S CONSTRUCTION Land Leveling • Earth Moving Fields • Ponds • Roads Building Sites 22026 Market Road Parma, Idaho Robert Shippy 208/722-6727 Rob Shippy 208/722-6122
SIDING CONTRACTORS  MGM Siding Contractors <i>William T. Bruce</i> 1024 W. Finch Dr. Nampa • 465-0214 • Fax 465-9831 Vinyl, Steel & Aluminum Siding Vinyl Windows  BALCOA Master Contractor Craftsmanship You can Trust	CONSTRUCTION  BUCK HALLER EXCAVATION & TRUCKING Ag, Commercial & Residential Homesite & Subdivision Development Septic Systems, Irrigation, Utilities Roads, Gravel Products Excavator, Dozer, Bobcat, Dumptruck & Belly Dump LICENSE #15189-B-14(28) HAZMAT AND MSHA CERTIFIED Licensed, Bonded & Insured	BED LINERS <i>Quality work from start to finish</i> Auto Body by Alan Auto Glass • Frame & Unibody Repair • Collision Repair • Custom Paint • All Work Guaranteed Alan Bahem Rt. 1, Graveyard Pt. Rd. Homedale, ID 83628 (208) 337-4837 Mobile 250-4837	AUTO BODY  AA PC REPAIR Tired of your computer not working right? I will come to your home! Competitive Rates • Industry Certified "Outstanding Service" Homedale, Idaho 695-7868	COMPUTER REPAIR
CHIROPRACTIC HOMEDALE CHIROPRACTIC CENTER J. Edward Perkins, Jr. D.C. 111 S. Main - Homedale - 337-4900 <i>Your Pain and Wellness Clinic</i> • Low Back Pain • Carpal Tunnel Syndrome • Leg Pain • Whiplash/ Car Accident Injuries • Neck Pain • Work Injuries • Headache Pain • Sports Injuries • Shoulder Pain • Custom Orthotics (Shoe inserts) Call 208/337-4900 for a Free Consultation	CHIROPRACTIC	HEALTH SERVICES Homedale Clinic Terry Reilly Health Services Chip Roser, MD Richard Ernest, CRNP Janine Franco, PA 108 E. Idaho, Box 1058 Homedale, Idaho 83628 337-3189, Night 466-7869 Mon., Wed., Thurs. & Fri. 8:30 - 5:00 Tuesday 8:30 am - 9:00 pm	HEALTH SERVICES Marsing Clinic Terry Reilly Health Services Faith Young Peterson, CRNP Family Nurse Practitioner Chip Roser, MD Janine Franco, PA 201 Main Street, Marsing, Id. 83639 896-4159, Night 466-7869 Mon., Tues., Wed., & Fri. 8:30 - 5:00 Thursday 8:30 am - 9:00 pm	DENTAL SERVICES Homedale Dental Terry Reilly Health Services Eight 2 nd Street West, Homedale, Idaho 83628 337-6101 Ronald Fife, DDS Monday - Thursday 8:00-1:00/2:00-5:00 Accepting Emergency Walk-Ins Daily We Accept Medicaid
MORTGAGES  PAC FIRST MORTGAGE LOOKING for a mortgage? New, purchase or refinance? Low rates our specialty! Contact Dan Odium at 794-8935 Ask about our IKON Plan.	ADVERTISING YOUR AD HERE! \$10.00 PER WEEK OWYHEE AVALANCHE 337-4681	CONCRETE Ray Jensen You want CONCRETE? I'll do it any way you want it. 25 Years Experience • Wilder cell: 899-9502 home: 482-7757 rayjsconcrete@cs.com	HOME HEALTH CARE  A Special Touch Home Care, Inc. Licensed Staff • Medicare Medicaid • Private Pay In <u>YOUR</u> Home Care We provide assistance with bathing, dressing, grooming, skin, nail, oral care, meal preparations, grocery shopping, medication assistance, light housekeeping, laundry & appointments. 216 W. Idaho PO Box 933 Homedale, ID 83628 (208) 337-5343	

Looking back...

from the files of The Owyhee Avalanche and Owyhee Chronicle

25 years ago

February 14, 1980

County officials clash

A “difference in philosophy,” might be the best way to describe the current squabble between the Owyhee County Sheriff and the Owyhee County Prosecutor.

The difference in opinion surfaced after Prosecutor Alan Coffel refused to prosecute a resisting and obstructing charge brought by sheriff’s officers against a Homedale man. The charges stemmed from an incident during an altercation outside a local bar. During the incident officers arrested an individual not directly involved in the fight or “obstructing” an officer and “resisting” arrest.

When the charges were presented to Coffel, he refused to prosecute. Nettleton says he feels Coffel’s action could be interpreted by some to mean “open season” on his officers involved in breaking up fights.

Coffel has come under some fire from other law enforcement and Fish and Game personnel. The officers say they feel the prosecutor has failed to follow up on what they consider to be airtight cases.

Nettleton, who admitted his relationship with the prosecutor has gone downhill to the point of almost no communication, said the resisting and obstructing case angered him because Coffel did not contact the sheriff or the arresting officer before deciding not to prosecute.

Science students win

The Science team from Homedale High School won the Championship in the small school competition at Boise State University Science Day on Saturday with their series of tests on Science-math and science-reasoning. Members of the team are Randy Anderson, John Vance and Roba Vaughan, seniors, and Tom Edwards, junior.

Roba Vaughan received a \$1250 scholarship as an individual contestant. Tom Edwards won first place medal in the small school competition.

Awards will be presented at a luncheon today (Thursday) to winners in the recent “Hire the Handicapped” contests. Tom Edwards, junior, placed second and Cindy Cegnar, junior, placed third in the regional essay contest. Mark Arvin, junior, and Troy Clymer, sophomore, received honorable mention in the regional poster competition.

Lions hosting boxing matches

The largest crowd of boxing fans in the history of the area is anticipated Saturday, Feb. 16, when the Homedale Lions sponsors Golden Gloves competition in the high school gymnasium. The matches are scheduled to begin at 7:30pm.

The Saturday night card will feature matches between local fighters and the Blackfoot, Portland, Oregon and Boise boxing clubs.

Homedale births

Mr. and Mrs. Benjamin Dobbeck (Linda Westby), Newberg, Ore., are parents of a 6 lb. 10 oz. daughter, Miriam Elaine, born on Friday, Feb. 1. Mr. and Mrs. Edwin Stansell, Homedale, are maternal grandparents. Mr. and Mrs. Floyd Fredenburgh, Park Rapids, Minn., and Mrs. Lillie Westby, Nevis, Minn. Are maternal great grandparents. Mrs. Shirley Dobbeck, Muncie, Ind., is paternal grandmother. Mrs. Betha Dobbeck, Ohio, is paternal great grandmother.

Pioneer supper set

The 63rd consecutive Central Cove Pioneer potluck supper will be held on Sunday, Fe. 24, at 1 pm at the IOOF Hall in Homedale.

Former residents and their families are invited to attend, and are requested to bring a covered dish and their own table service. Beverages will be furnished.

A display of pictures and family heirlooms is planned.

Jayceettes celebrate

Members of the Homedale Jayceetes are joining members of more than 4,000 Jayceetee chapters all over the country this week in observance of 1980 United States Jayceette Week.

In Idaho, Governor John Evans signed a proclamation making the designation.

Floydine Egurrola, Homedale Jayceette president, invites anyone interested to attend the group’s next meeting February.

50 years ago

February 18, 1955

Homedale PTA founders day program presented Feb. 15

The PTA Founders day program was observed Monday, Feb. 15, at the new grade school auditorium. Recognition of the past residents was made by Mrs. Regan, program chairman, who presented the ladies with a corsage and a boutonniere for the men.

The oldest president present was Mrs. Ivan Nanney who presided in 1935. Mrs. Marjorie Macy, 1950 president; Mrs. Faulks, 1952; Mrs. McIntyre, 1953; and Mrs. John Stephens, 1954, were other presidents in attendance.

Armory building plans are missing

Construction of a new armory building in Homedale is being delayed due to the plans of the proposed building have been lost, strayed or stolen, according to Francis Pusateri, president of the Homedale Chamber of Commerce, who stated that the plans disappeared following a meeting held last week at the Tango Club annex. Mr. Pusateri is very anxious to locate the missing plans and will appreciate any one knowing the whereabouts of the same, notify him immediately.

Teachers meeting held Wednesday

The regular meeting of the H. A. T. was held Wednesday, February 10, at the high school. The meeting was called to order by the president, Weldon Little. Mrs. Claybaugh, chairman of membership and relations committee, had charge of the discussions. C. W. Zollinger and Mr. Little reported on benefits teachers gain by supporting the National Education Association. Bernice Crockett, delegate on the state committee of public relations, gave an interesting report on the meeting she recently attended in Pocatello, explaining methods used to promote better understanding with the public.

Refreshments were enjoyed by the group following the meeting.

On Furlough

Pvt. Kenneth Moss arrived home to spend a 30 day furlough with his parents, Mr. and Mrs. Frank Moss. Prior to his return to the States, Pvt. Moss was stationed with the Army at Butzback Germany. He will return to Camp Kilmer, N. J., at the termination of his furlough.

Sports

Feb. 5, the Trojans played Marsing Huskies on their floor to be defeated 65-40. Landa made 13 for Homedale and Star was high for Marsing. The Trojans played a good game but couldn’t gain fast enough.

The J. V. team lost by one point. The score was 48-47. Bob Carrico made 15 for Homedale and Herman 15 for Marsing.

Tuesday, Feb. 9, the New Plymouth Pilgrims beat the Trojans by a score of 50-35. The boys fought hard but lost anyway. Fred Dempshar sand 15 for Homedale and Kennedy 9 for the Pilgrims.

The J. V. team again came close to taking the lead but lost by two points, making the ending score 42-40 in Plymouths favor. Don Sweep racked up 14 for Homedale and Plymouth’s high man made 13.

Tuesday, Feb. 16, the Parma Panthers journeyed to Homedale to go home the victor by a score of 51-31. Lyn Taggart paced the home club with 8 points and Watts made 17 for Parma. The teams were tied through the 1st quarter.

The J. V. team came out on top this time. The boys played a good game.

Marsing

Mr. and Mrs. John Schmidt and family and Mr. and Mrs. Hugh Howard were Sunday dinner guests of Mr. and Mrs. Ray Parshall.

The Earl Arnolds spent the week end in Jerome and Buhl, Idaho, where they visited friends and relatives.

Mr. and Mrs. Bill Bledsoe and family were dinner guests of the George Baalsons Saturday.

Mr. and Mrs. Claude Basey and daughter were week end guests in McCall at the Harry Woods home.

Mr. and Mrs. Orville Bish and Mr. and Mrs. Cecil Bish entertained five tables at a pinochle party Saturday evening. Before playing cards, a delicious buffet luncheon was served to the group. Prize winners were Mrs. Lillian Smith, Norma Dobbin, Ralph Bowman, Jack Harris and Kenny Belknap.

138 years ago

February 16, 1867

SNOW. Snowing in these parts becomes a necessity in traveling over and round the mountains in winter. There are several styles of snow shoes, but the Norwegian is in use here. They are from six to ten feet long, three to five inches wide, and shaped like a sled runner in front. It requires much practice to use them to advantage. There is a novelty about the business that induces many to become skilled in their use for the fun and recreation it affords. We have witnessed several facts which appeared frightful as well as entertaining. Several parties ascended to near the summit of Florida Mountain, west of the Lincoln Mill, and came down at rate of speed much ahead of a train of cars. The falls that some experienced were the occasion of much laughter, while those of others were painful. Adolphus Roudine fell and his thigh struck the guide pole, resulting in a very deep flesh wound. At latest accounts he was improving. Mr. W. H. Wickersham has been confined pretty closely to his room for over a week by injuries received from a fall on snow shoes. His back and left thigh are sprained. These and other cases of less damage should at least be a warning to exercise reasonable caution when indulging in such sports.

ADDITIONAL. Last Friday evening, at a late hour, Mr. Pickett, military messenger and Indian scout, came to our office and gave further particulars of the fight near Stein’s Mountain. He states the following at General Crook’s request: sixty instead of forty were killed, thirty were taken prisoners, three young and twenty seven old ones. The squaws report “Big-Foot” killed. Nothing more certain on this point is known.

Since the above mentioned fight occurred, General Crook discovered a camp of seventeen redskins, killed five bucks and took the remainder prisoners. The General has sent to Smith and Lyon for supplies and every man that can be spared. The next fight will probably occur near the source of the Malheur.

Major Hunt is spoken of as being heavy on an Indian fight, and that he did bravely at Stein’s Mountain. He is on the present expectation which must now be near the expected battle ground. The Boise Indians have been very useful. One that had been previously captured and premised to be good was caught in the late fight. He pled that he was a Boise Indian, good, &c., but was soon killed and thus his treachery punished.

BALL. Preparations are in progress for a great ball on the evening of the 22d, at Concert Hall. A general invitation is extended to all lovers of dancing. The best of music, good room and all needful auxiliaries to a gay time will be provided. We are requested to say the Committee of Arrangements will meet tomorrow at Concert Hall for business.

DISTRICT OF OWYHEE. In the reorganization of this military district, General Halleck has given Owyhee a valuable compliment in ordaining it with the name of this County. Its value consists in giving more prominence to our mining section, as well as the all important one of great protection. The wisdom and general importance of the order are parent. The new district covers more of the revenues favorite haunts; more men are subject to the district Commander’s orders; direction has been given in the choice of Head Quarters, and a plainly implied approval of General Crook’s style of business. Boise must find consultative in the loss of the name in the real value of the new arrangement.

WEATHER. Considering the latitude of Owyhee and the depth to which the snow falls, it is a remarkably warm climate. This week has probably averaged as cold as any of the winter, and the average temperature was about 16° above zero. Thursday evening at 9 pm it stood at 4° above; and yesterday morning at 7 o’clock at 23 above. The past few days have been clear and pleasant.

A LETTER RECEIVED from Camp McDermit, says that Col. Baker is out on a scout. Expect he will fetch up in Fort Boise. Joe Snapp, one mile from Camp, had four horses and three yoke of oxen stolen by the Indians about one week ago.

Commentary

Baxter Black, DVM



On the edge of common sense

Collateral damage

Some cows you can walk right up to. Others are like K-Mart employees. You see one at the end of the aisle and by the time you get there, they're gone!

This particular cow was pretty skittish, so Keeler knew something was wrong when she wouldn't get out of the way of his pickup. He decided a shot of long-acting antibiotic would perk her up.

He dug his rope out from behind the seat and tied it around her neck. He scanned the grassy meadow for something to snub her up to. Coiled like a snake in the bed of his pickup was a 7.50 x 16 LT, 8-ply truck tire still on the eight-hole rim. Keeler backed up to the cow, lifted the 60-pound wheel and ran the tail of his rope through the axle hole and tied it.

'That should work long enough for me to give her a shot,' he thought, not remembering the hundreds of times he had misjudged a cow. When he hit her with the needle, the cow jumped. The movement drug the iron rim against the rusty bed and made a screech! It worked as good as a barking dog! The cow sprang to life and took off, dragging the tire behind her. It bounced crazily, resulting in a circuitous trajectory which lead her back to the pickup. She crashed into the fender, shot-putting the wheel over her head and right through the windshield.

Two weeks later, Keeler was back on duty with a new windshield. It wasn't so much the cost of it all; insurance covered it, it was the inconvenience. Driving to town, leaving the truck, someone to take him home, then another hitchhike back to town.

Today's job was to take an orphaned calf to the sale. He got the two-month-old crossbred bull roped in the corral. But having learned his lesson two weeks earlier, he tied the rope to the bumper of his pickup, instead of the tire which still lay there hissing. Keeler hadn't thought his plan through. After capturing the fighting flighty red brockle calf, he had a vague idea of maybe hog-tying it in the back of his pickup. However, he forgot a piggin' string.

He ran to the shed for some proper twine. In his haste to return he hit a stack of empty linseed oil cans. It made a racket like someone beating on a tin roof with a log chain. The surprised calf jumped into the bed of the pickup, over the cab, and landed on the hood...which was as far as the rope would let him go. There he stomped the hood till it looked like a lumpy mattress, managed to mangle a side view mirror, smash the bug guard, tear off both wipers and break through the brand new windshield...again.

Insurance covered it for a second time, but his Arkansas Farm Bureau deductible has gone up.

Wayne Cornell

Not important ... but possibly of interest



I was swapping stories with Chuck, a coworker. Somehow, the conversation drifted to electrical accidents. Chuck told about the time, when he was in his teens, when his family's tube-type television set went on the blink. Ignoring the "Danger, High Voltage, Do Not Remove" sign on the back of the TV, Chuck did just that. When the back was off the set he peered at the dusty electronics inside and spotted a wire that looked like it should be attached to something. He grabbed the wire and received high-voltage jolt that explained the reason for the printed warning. Chuck said after a few days the numbness disappeared from his arm along with the nervous tic in his cheek muscles.

Chuck's story reminds me of an incident that occurred back when my parents were running a weekly newspaper. The operation was located in an old false front, wooden building that had been built early in the 20th century. The building was very cramped. So, mom and dad found a larger building.

Helping with the move to the new building was Joe, a teenager who worked for my parents after school every day. Among the tasks that needed to be completed was moving the telephone. In those days telephones were heavy, had dials, came in one color - black, and were the property of the Telephone Company. Normally, if you needed repairs or wanted to move the phone, you called the Telephone Company and a service man was dispatched to handle the job. And that's what mother intended to do. Joe, however, said it wasn't necessary.

Joe told mother the telephone was really a very simple instrument, connected to the phone line by only three wires. Grabbing a screwdriver, he started disconnecting the wires, explaining he would simply reconnect them to the proper terminals when phone was at the new location. (In those days phones didn't have quick connect plugs).

"Watch out," mom said nervously. "You might get shocked!"

"Don't worry," Joe said confidently. "Telephones operate on very low voltage. The only time there is high voltage is when the telephone rings."

As Joe explained, he was holding the bare ends of the telephone wires between his fingers. It was at that moment that the telephone rang.

Actually, the telephone didn't ring. It couldn't because it was disconnected. But Joe served the same purpose. The high voltage looking for a bell to ring, rang Joe instead. He let out a totally unexpected yelp, dropped the wire and did sort of a dance, flinging his arm around wildly. If I remember correctly, he also uttered several words that were a total surprise to hear from the mouth of a young man from a devoted, church-going family.

We never did figure out who was calling.

Joe didn't seem to suffer any lasting effects from being a telephone bell. He went on to become a newspaper editor and publisher. I suppose it could be argued, however, that if he had not got that unexpected phone call, he might have made something of himself.

Letters to the editor
Advice to trustees
Nothing to worry about

I have read and re-read Mr. Turner's guest opinion. I spent some years at Bruneau School as Head Teacher and as District IRI reading test coordinator until this past fall. It is a place I know well.

If the school board had followed Mr. Turner's advice from the Avalanche and done some investigating of what they were hearing there would not be a problem. They appear to have listened only to Dr. Taylor rather than listening to the people who elected them to the board.

"Some due diligence investigations" would have shown them a clearer picture. This awful situation would not exist if they had done some checking.

Helen Percy
Mountain Home

Once again we're being reassured there's nothing to worry about toxic waste being shipped to Owyhee County for disposal. When I'm told I don't have to worry. I ask myself, "If I don't have to worry why am I being told I don't have too?"

If the stuff is so safe, so benign, leave it in Connecticut!

Easterners including John Marvel, Katie Fite and assorted attorneys are constantly harassing us under the guise of protecting us from ourselves while their cohorts "back east" turn us into a toxic waste dump.

Michael F. Hanley IV
Jordan Valley

Please enter my subscription to the Owyhee Avalanche now! Enclosed is \$_____

NAME_____

ADDRESS_____

CITY_____

STATE_____ZIP_____

SUBSCRIPTION RATES:

Owyhee County.....\$31.80

Canyon, Ada and Malheur Counties.....\$37.10

Elsewhere\$42.00

Idaho Sales Tax included

The Owyhee Avalanche

P.O. BOX 97 • HOMEDALE, ID 83628

Public notices

NOTICE OF TRUSTEE’S SALE

On June 8, 2005, at the hour of 10:00 o’clock am of said day, on the steps of the Owyhee County Courthouse, State Highway 78, Murphy, Idaho, CHARLES C. JUST, ESQ., Attorney at Law, as Successor Trustee, will sell at public auction to the highest bidder, for cash, in lawful money of the United States, all payable at the time of sale, the following described real property, situated in the County of Owyhee, State of Idaho, and described as follows to wit:

See Attached Exhibit “A”

This Trustee’s Sale is subject to a bankruptcy filing, a payoff, a reinstatement or any other conditions of which the Trustee is not aware that would cause the cancellation of this sale. Further, if any of these conditions exist, this sale may be null and void, the successful bidder’s funds shall be returned, and the Trustee and the Beneficiary shall not be liable to the successful bidder for any damages.

The Trustee has no knowledge of a more particular description of the above referenced real property, but for purposes of compliance with Section 60-113 Idaho Code, the Trustee has been informed the address of 505 Highway 78, Grand View, Idaho, a/k/a 505 Highway 78, Grand View, Idaho, is sometimes associated with the said real property.

Said sale will be made without covenant or warranty regarding title, possessions or encumbrances to satisfy the obligation secured by and pursuant to the power of sale conferred in the Deed of Trust executed by Jace Paul May, a married man, as his sole and separate property, as Grantor(s) with Mortgage Electronic Registration Systems, Inc. as the Beneficiary, under the Deed of Trust recorded October 28, 2002, as Instrument No. 241444, in the records of Owyhee County, Idaho, in the records of said County.

THE ABOVE GRANTORS ARE NAMED TO COMPLY WITH SECTION 45-1506(4)(a), IDAHO CODE. NO REPRESENTATION IS MAKE THAT THEY ARE, OR ARE NOT, PRESENTLY RESPONSIBLE FOR THIS OBLIGATION.

The default for which this sale is to be made is the failure to pay the amount due under the certain Promissory Note and Deed of Trust, in the amounts called for thereunder as follows: Monthly payments in the amount of \$535.51 for the months of October 2004 through and including the date of sale, together with late charges and monthly payments accruing. The sum owing on the obligation secured by said Deed of Trust is \$70,335.81 as principal, plus service charges, attorney’s fees, costs of this foreclosure, any and all funds expended by Beneficiary to protect their security interest, and interest accruing at the rate of 6.125% from September 1, 2004, together with delinquent taxes plus penalties and interest to the date of sale.

The Beneficiary elects to sell or cause the trust property to be sold to satisfy said obligation.

Dated this 1st day of February, 2005.

Charles C. Just, Esq.
P.O. Box 50271
Idaho Falls, ID 83405
(208) 523-9106 FAX (208) 523-9146

For information concerning this

sale please contact The Just Law Office at www.justlawidaho.com or Toll Free at 1-800-923-9106, Thank you.

Exhibit “A”

Parcel I:

A parcel of land being a potion of the Northwest Quarter of the Northwest Quarter of Section 22, Township 5 South, Range 3 East, Boise Meridian, Owyhee County, Idaho, said parcel being more particularly described as follows:

Commencing at the Brass cap marking the corner common to Sections, 16, 15, 22 and 21, Township 5 South, Range 3 East, Boise Meridian, Owyhee County, Idaho; thence

North 89° 39’ 59” East 1319.50 feet to the West 1/16 corner common to said Section 15 and 22; thence

South 00° 27’ 29” West (formerly South 00° 27’ 05” West) 64.02 feet to an iron pin; thence

North 80° 51’ 59” West 63.72 feet to an iron pin marking the POINT OF BEGINNING; thence along the following courses and distances to iron pins:

South 17° 38’ 14” West 170.67 feet to the Northerly right-of-way of State Highway No. 78; thence

North 73° 31’ 34” West 90.02 feet along said right-of-way; thence

North 17° 38’ 14” East 159.05 feet; thence

South 80° 51’ 59” East 91.00 fee to the POINT OF BEGINNING.

EXCEPTING all gas, oil and mineral rights reserved by Rodney A. Hawes and Leona S. Hawes by deed dated August 7, 1956, recorded February 7, 1959 in Book 51 of Deeds, Page 228, Owyhee County Records.

Parcel II:

A parcel of land being a portion of the Northwest Quarter of the Northwest Quarter and the Northeast Quarter of the Northwest Quarter of Section 22, Township 5 South, Range 3 East, Boise Meridian, Owyhee County, Idaho, said parcel being more particularly described as follows:

COMMENCING at the Brass cap marking the corner common of Sections 16, 15, 22 and 21, Township 5 South, Range 3 East, Boise Meridian, Owyhee County, Idaho; thence

North 89° 39’ 59” East 1319.50 feet to the West 1/16 corner common to said Section 15 and 22; thence

South 00° 27’ 29” West (formerly South 00° 27’ 05” West) 64.02 feet to an iron pin marking the POINT OF BEGINNING; thence along the following courses and distances to iron pins;

South 80° 51’ 59” East 60.44 feet; thence

South 19° 07’ 16” West 186.70 feet to the Northerly right-of-way of State Highway No. 78; thence

North 73° 31’ 34” West 117.99 feet along said right-of-way; thence

North 17° 38’ 14” East 170.67 feet; thence

South 80° 51’ 59” East 63.72 feet to the POINT OF BEGINNING.

EXCEPTING all gas, oil and mineral rights reserved by Rodney A. Hawes and Leona S. Hawes by deed dated August 7, 1956, recorded February 7, 1959 in Book 51 of Deeds, Page 228, Owyhee County Records.

2/16,23;3/2,9/05

NOTICE OF TRUSTEE’S SALE

On the 2nd day of June, 2005, at the hour of 10:45 A.M., of said day, (recognized local time), in the lobby of the Owyhee County Courthouse, Murphy, in the County of Owyhee, State of Idaho.

First American Title Company of Idaho, Inc., an Idaho Corporation, as successor trustee, will sell at public auction, to the highest bidder, for certified funds, or the equivalent, which is lawful money of the United States of America, all payable at the time of sale in compliance with Section 45-1506(9) Idaho Code, the following described real property, situated in the County of Owyhee, State of Idaho, and described as follows, to-wit:

SEE ATTACHED EXHIBIT A

The Trustee has no knowledge of a more particular description of the above referenced real property, but for purposes of compliance with Section 60-113 Idaho Code, the Trustee has been informed that according to the County Assessors office, the address RR 1 Box 1230, Homedale, Idaho, is sometimes associated with said real property.

Said sale will be made without covenant or warranty regarding title, possession or encumbrances to satisfy the obligation secured by and pursuant to the power of sale conferred in the deed of trust executed by Michael D. Stowell and Jana G. Stowell, husband and wife, as grantors, to FIRST AMERICAN TITLE COMPANY OF IDAHO, INC., an Idaho Corporation, as successor trustee, for the benefit and security of Washington Mutual Bank, FA, as beneficiary, recorded January 6, 1999, as Instrument No. 227116, Mortgage Records of Owyhee County, Idaho.

THE ABOVE GRANTORS ARE NAMED TO COMPLY WITH SECTION 45-1506(4)(A), IDAHO CODE. NO REPRESENTATION IS MADE THAT THEY ARE, OR ARE NOT, PRESENTLY RESPONSIBLE FOR THIS OBLIGATION.

The default for which this sale is to be made is the failure to pay when due, under Deed of Trust Note, the monthly payments for Principal and Interest \$395.58, due per month for the months of September through December, 2004 and all subsequent payments until the date of sale or reinstatement, with a monthly late charge accruing at \$19.79, uncollected late charges are due in the amount of \$79.16 with interest accruing at 4.625% per annum, and continuing to accrue from August 1, 2004. The principal balance owing as of this date on the obligation secured by said Deed of Trust is \$69,552.41, plus accruing interest, costs and advances. All delinquent amounts are now due, together with accruing late charges and interest, unpaid and accruing taxes, assessments, trustee’s fees, attorney’s fees, and any amounts advanced to protect the security associated with this foreclosure and that the beneficiary elects to sell or cause the trust property to be sold to satisfy said obligation.

Date: January 27, 2005
FIRST AMERICAN TITLE COMPANY OF IDAHO, INC.

By Monine Cole, Trust Officer

FA-18831/wm-wjx
First American Title Company of Idaho

Trust Dept. 1-208-375-0455
EXHIBIT A

Attached to Notice of Trustee’s Sale

All that certain parcel of real property situate in the Northwest ¼ Northwest ¼ of Section 13, Township 3 North, Range 6 West, B.M., Owyhee County, Idaho, and being more particularly described as follows:

BEGINNING at the Northwest corner of said Section 13, thence Along the West line of said Section 13, South 1° 31’ 35” East, 161.27 feet, to a railroad spike in the center of Sage Road; thence

Easterly and parallel to the North line of said Section 13, North 89° 32’ 00” East a distance of 1130.82 feet, to a 5/8” rebar, said point also being a point on an existing fence line; thence

Along said fence line, North 0° 54’ 52” West a distance of 161.24 feet, to a 5/8” rebar, said point also being a point on the North line of said Section 13, from which the West 1/16 Corner common to Sections 12 and 13 bears North 89° 32’ 00” East, 210.37 feet;

Thence along said North line, South 89° 32’ 00” West, 1132.34 feet to the POINT OF BEGINNING.

Trustee Verification, Amy L. Wilcoxson
12/15,22,29;01/5/05

NOTICE OF TRUSTEE’S SALE

**T.S. No.: F-37953-ID-DL
Loan No.: 101412773**

On 5/13/2005 at 11:00 AM (recognized local time), in the lobby of the Owyhee County Courthouse, 20381 State Hwy 78, Murphy, ID 83650. In the County of Owyhee, State of Idaho, Fidelity National Title Company, as successor Trustee, on behalf of Deutsche Bank National Trust Company as Trustee for the registered holders of New Century Home Equity Loan Trust Series 2003-2 Asset Backed Pass Through Certificates Series 2003-2 will sell at public auction, to the highest bidder, for cash, in lawful money of the United States, all payable at the time of sale, the following described real property, situated in the County of Owyhee, State of Idaho, and described as follows: EXHIBIT A A part of the Northwest Quarter Northwest Quarter Northwest Quarter of Section 9, Township 3 North, Range 5 West, Boise Meridian, Owyhee County, Idaho, more particularly described, to wit: COMMENCING at the Northwest corner of Section 9, Township 3 North, Range 5 West, Boise Meridian; thence North 89°45’ East (formerly of record East) 133.00 feet, along the North line of the said Section 9, to the INITIAL POINT of this description; thence continue North 89°45’ East 81.00 feet; thence South 01°03’ East 341.73 feet, parallel to the West line of the said Section 9, to a point on the North line of the Owyhee Addition to Homedale, Idaho, No. 1; thence South 89°24’ West 80.99 feet, along the said North line of the Owyhee Addition to Homedale, Idaho, No. 1; thence North 01°03’ West 342.23 feet (formerly of record North 341 feet), parallel to the said West line, to the INITIAL POINT of this description. AND A part of the Northwest Quarter Northwest Quarter Northwest Quarter of Section 9, Township 3 North, Range 5 West, Boise Meridian, Owyhee County, Idaho, more particularly described as follows: COMMENCING at the Northwest corner of Section 9, Township 3 North, Range 5 West, Boise Meridian; thence North 89°45’ East 214 feet along

the North line of the said Section 9, to the INITIAL POINT of this description; thence continue North 89°45’ East 74 feet; thence South 01°03’ East 341.28 feet, parallel to the West line of the said Section 9, to a point on the North line of the Owyhee Addition to Homedale, Idaho, No. 1; thence South 89°24’ West 73.99 feet, along the said North line of the Owyhee Addition to Homedale, Idaho No. 1: thence North 01°03’ West 341.73 feet (formerly of record North 341 feet) parallel to the said West line, to the INITIAL POINT of this description. The Trustee has no knowledge of a more particular description of the above referenced real property, but for purposes of compliance with Section 60-113 Idaho Code, the Trustee has been informed that the address of: 733 West Idaho Ave., Homedale, ID 83628, is sometimes associated with said real property. Said sale will be made without covenant or warranty regarding title, possession or encumbrances to satisfy the obligation secured by and pursuant to the power of sale conferred in the Deed of Trust executed by: William L. Wiggins and Cheryl Wiggins husband and wife, As grantors, To: Transnation Title, for the benefit and security of New Century Mortgage Corp., As Beneficiary, dated 8/28/2002, recorded 9/5/2002, as Instrument No. 240796, records of Owyhee County, Idaho. Please Note: The above Grantors are named to comply with section 45-1506(4)(A), Idaho Code, No representation is made that they are, or are not, presently responsible for this obligation set forth herein. The Default for which this sale is to be made is the failure to pay when due, under Deed of Trust and Note dated 8/28/2002. The monthly payments for Principal, Interest and Impounds (if applicable) of \$715.50, due per month from 9/1/2004, and all subsequent payments until the date of sale or reinstatement. The principal balance owing as of this date on the obligation secured by said Deed of Trust is \$80,641.16, plus accrued interest at the rate of 9.99% per annum from 8/1/2004. All delinquent amounts are now due, together with accruing late charges, and interest, unpaid and accruing taxes, assessments, trustee’s fees, attorney’s fee, and any amounts advanced to protect the security associated with this foreclosure and that the beneficiary elects to sell or cause the trust property to be sold to satisfy said obligation. Dated: January 11, 2005 By: Fidelity National Title Company, as successor Trustee By: Quality Loan Service Corp., as agent for successor Trustee 319 Elm Street, 2nd Floor, San Diego, CA 92101-3006 (619) 645-7711 For Sale Information call: 916-387-7728 or logon to: www.calpost.com Carmen Herrera, Asst. Trustee Sale Officer ASAP627715
1/26;2/2,9,16/05

Keep informed.

Subscribe to
The Owyhee Avalanche
337-4681

Public notices

OWYHEE COUNTY COMMISSIONERS MINUTES JANUARY 24, 2005 OWYHEE COUNTY COURTHOUSE MURPHY, IDAHO

Present were Commissioner Tolmie, Commissioner Reynolds, Commissioner Salove, Clerk Sherburn, and Jim Desmond.

The Board made a motion to amend the agenda to include the following item: letter to People for the Owyhee’s.

The Board and Clerk conducted the quarterly jail inspection.

The Board made a motion to approve the certificate of residency on 12 students attending CSI for spring semester of 2005.

Larry Howard met with the Board to give an update on his activities as Civil Defense Director.

The Board took the following action on pending Indigent & Charity cases presented: I.C. Case #05-05 the Board denied the applicant, not the last resource, and approved a lien to be placed. I.C. Case #05-02 the Board denied the applicant, incomplete application. I.C. Case # 04-42 the Board approved payment of all medical bills.

The Board approved a catering permit for the Owyhee Cattlemen’s midwinter meeting.

The Board made a motion to approve and send a letter to DEQ requesting exemption from requirements to classify the Courthouse Septic System to provide for a certified operator.

Simon Bell and Chad Hyslop from US Ecology gave the Board an update on operations at the site.

The Board approved and a letter was sent accepting the recommendation made by People of the Owyhee’s that they be withdrawn from the Owyhee Initiative Work Group and replaced by two organizations specifically focused on recreation.

The Board made a motion to approve and send a letter to Southwest District Health clarifying the category of rural drop box versus Murphy transfer or tipping station on the inspection checklist recently completed.

The Board made a motion to approve the minutes.

There being no further business the Board moved to adjourn.

The complete minutes can be viewed in the Clerk’s office.

s.s/ Harold Tolmie
Attest:s.s/ Charlotte Sherburn
2/16/05

NOTICE OF BID LETTING

Notice is hereby given that the Marsing Rural Fire District will accept sealed bids for a pumper fire truck and equipment.

Complete specifications will be available upon request by contacting Brion Showalter at 5078 Edison Rd., Marsing, Idaho 83639, phone no. 896-4331 or Roman Usabel at 8139 U.S. Hwy 95, Marsing, Idaho 83639, Phone # 896-4511. The bids then can be mailed to Marsing Rural Fire District, P.O. Box 299, Marsing, Idaho 83639.

All bids shall be opened at 8:00 p.m. on Wednesday, March 9, 2005, at the Marsing Fire House at 308 Main Street, Marsing, Idaho.

Bids must be accompanied by a Bidders Bond, Cash, Cashier’s Check, Certified Check in an amount at least 10% of the bid amount and made payable in favor of the Marsing Fire Depart-

ment as liquidated damages in the event the bidder fails to enter into a Contract for the equipment and bid as accepted. The Surety Company must be listed in United States Treasury Department Circular #570 and licensed in the State of Idaho.

The outside of the sealed envelope must be properly marked “Bid on Fire Equipment.”

Bids to be on the basis of cash upon the final delivery and acceptance in accordance with the specifications for this equipment. No bid may be withdrawn for a period of thirty (30) days after bid closing date.

The Marsing Fire Commissioners reserve the right to reject any and all bids and to accept the bid it feels is in the best interest of the Department.

Judith Malmberg, Secretary
DATED this 3rd day of February, 2005
2/9,16/05

INVITATION TO BID

Notice is hereby given that the Board of Gem Highway District Commissioners invites bids for the following:

Crushing recycled asphalt into a finished product of approximately three-fourth inch (3/4). Asphalt is in stockpile in the Opaline Area of Gem Highway District. There is approximately 7500 tons of asphalt. Work to be completed by April 30, 2005. All bids must be filed with the Secretary of the Board of Gem Highway Commissioners, P.O. Box 453, Marsing, Idaho 83639-0453 on or before 8:00 PM the 28th day of February, 2005. The right is reserved to reject all proposals, or to accept the lowest responsible proposal and to waive any irregularity. If further information is needed call Rick Meade, Road Superintendent.
Phone 208-896-4581
DATED: February 8, 2005
Virginia Belknap, Secretary
2/16,23/05

The following application(s) have been filed to appropriate the public waters of the State of Idaho: 55-13848

STATE OF IDAHO
DEPT OF LANDS
954 W JEFFERSON
PO BOX 83720
BOISE ID 83720-0050
Point(s) of Diversion SESWNW S24 T09S R02W OWYHEE County Source SPRING Tributary To ROCK CREEK
Use: STOCKWATER 01/01 To 12/31 0.2 CFS
Total Diversion: 0.2 CFS
Date Filed: 01/04/2005
Place Of Use: STOCKWATER T09S R02W S24 SWNW
Permits will be subject to all prior water rights. Protests may be submitted based on the criteria of Sec 42-203A, Idaho Code. Any protest against the approval of this application must be filed with the Director, Dept. of Water Resource, Western Region, 2735 Airport Wy, Boise ID 83705 together with a protest fee of \$25.00 for each application on or before March 7, 2005. The protestant must also send a copy of the protest to the applicant.
KARL J DREHER, Director
2/16,23/05

NOTICE

The Southwest District Board of Health will hold a **Board Meeting** on Wednesday, February 23, 2005 from 9:00 a.m. to 12:00 noon at the Southwest District Health, Room 206, 920 Main Street, Caldwell, Idaho.
2/16/05

The following application(s) have been filed to appropriate the public waters of the State of Idaho: 55-13849

STATE OF IDAHO
DEPT OF LANDS
954 W JEFFERSON
PO BOX 83720
BOISE ID 83720-0050
Point(s) of Diversion SENENE S3 T07S R03W OWYHEE County Source SPRING Tributary To MEADOW CREEK
Use: STOCKWATER 01/01 To 12/31 0.2 CFS
Total Diversion: 0.2 CFS
Date Filed: 01/04/2005
Place Of Use: STOCKWATER T07S R03W S3 NENE
Permits will be subject to all prior water rights. Protests may be submitted based on the criteria of Sec 42-203A, Idaho Code. Any protest against the approval of this application must be filed with the Director, Dept. of Water Resource, Western Region, 2735 Airport Wy, Boise ID 83705 together with a protest fee of \$25.00 for each application on or before March 7, 2005. The protestant must also send a copy of the protest to the applicant.
KARL J DREHER, Director
2/16,23/05

The following application(s) have been filed to appropriate the public waters of the State of Idaho: 57-11672

MICHAEL CAMPBELL
9378 WRIGHT RD
MELBA ID 83641
Point(s) of Diversion L4 (SWNW) S7 T01N R03W OWYHEE County Source GROUND WATER
Use: IRRIGATION 03/01 To 11/15 0.12 CFS
Use: STOCKWATER 01/01 To 12/31 0.02 CFS
Total Diversion: 0.14 CFS
Date Filed: 12/07/2004
Place Of Use: IRRIGATION T01N R03W S7 SWNW Lot 4
Number of Acres 4
Place Of Use: STOCKWATER T01N R03W S7 SWNW Lot 4
Remark: Applicant agrees to mitigate consumptive use in the future as needed. Permits will be subject to all prior water rights. Protests may be submitted based on the criteria of Sec 42-203A, Idaho Code. Any protest against the approval of this application must be filed with the Director, Dept. of Water Resource, Western Region, 2735 Airport Way, Boise ID 83705 together with a protest fee of \$25.00 for each application on or before March 7, 2005. The protestant must also send a copy of the protest to the applicant.
KARL J DREHER, Director
2/16,23/05

The following application(s) have been filed to appropriate the public waters of the State of Idaho: 57-11673

DALE VAN ES
722 HCR 1413 W
COVINGTON TX 76636
JACKIE VAN ES
722 HCR 1413 W
COVINGTON TX 76636
Point(s) of Diversion SESE S17 T02N R04W OWYHEE County Source GROUND WATER
Point(s) of Diversion SESE S17 T02N R04W OWYHEE County Source GROUND WATER
Use: STOCKWATER 01/01 To 12/31 3.61 CFS
Use: COMMERCIAL 01/01 To

12/31 1.1 CFS
Total Diversion: 4.71 CFS
Date Filed: 12/27/2004
Place Of Use: STOCKWATER T02N R04W S28 NESW NSW SWSW
Place Of Use: COMMERCIAL T02N R04W S28 NESW NSW SWSW
Remark: Commercial use is for a 4,500 cow dairy with 500 dry cows and 2,500 replacement stock.

Applicant agrees to mitigate consumptive use in the future as needed.

Permits will be subject to all prior water rights. Protests may be submitted based on the criteria of Sec 42-203A, Idaho Code. Any protest against the approval of this application must be filed with the Director, Dept. of Water Resource, Western Region, 2735 Airport Wy, Boise ID 83705 together with a protest fee of \$25.00 for each application on or before March 7, 2005. The protestant must also send a copy of the protest to the applicant.
KARL J DREHER, Director
2/16,23/05

PROPOSED CHANGE OF WATER RIGHT

Conrad and Jeremy Thomas of PO Box 5, Hammett ID 83627 filed application no. 71419 with IDWR to transfer one water right with a 1970 priority date from the Snake River totaling .32 cfs. The transfer proposes to split the right, retire one acre of irrigation and provide .02 cfs using a different, existing pump station for irrigation of one new acre located south of the river and Sparlin Island. The unchanged portion of the right will remain on land north of the river and Sparlin Island. Sparlin Island is south of Hammett.

For specific details regarding the application, please contact IDWR Western Region at 208-334-2190 or visit www.idwr.state.id.us with detail provided under “new water right applications”. Protests may be submitted based on the criteria of Sec 42-222, Idaho Code. Any protest against the proposed change must be filed with the Department of Water Resources, Western Region, 2735 Airport Wy, Boise ID 83705-5082 together with a protest fee of \$25.00 for each application on or before March 7, 2005. The protestant must also send a copy of the protest to the applicant.

KARL J DREHER, Director
2/16,23/05

PROPOSED CHANGE OF WATER RIGHT

Conrad and Jeremy Thomas of PO Box 5, Hammett ID 83627 filed application no. 71457 with IDWR to transfer two water rights with 1946 and 1961 priority dates from the Snake River totaling 2.58 cfs. The transfer proposes to split the rights, retire eight acres irrigation and provide .13 cfs using a different, existing pump station for irrigation of eight new acres. The new location is about ½ mile southeast of Sparlin Island. The unchanged portion of the rights will remain on land south of Sparlin Island. Sparlin Island is south of Hammett.

For specific details regarding the application, please contact IDWR Western Region at 208-334-2190 or visit www.idwr.state.id.us with detail provided under “new water right applications”. Protests may be submitted based on the criteria of Sec 42-222, Idaho Code. Any

protest against the proposed change must be filed with the Department of Water Resources, Western Region, 2735 Airport Wy, Boise ID 83705-5082 together with a protest fee of \$25.00 for each application on or before March 7, 2005. The protestant must also send a copy of the protest to the applicant.

KARL J DREHER, Director
2/16,23/05

NOTICE OF HEARING CASE NO. SP 02-01729 IN THE DISTRICT COURT OF THE THIRD JUDICIAL DISTRICT OF THE STATE OF IDAHO, IN AND FOR THE COUNTY OF OWYHEE

In the Matter of the Termination of the Parent-Child Relationship of

Brian Patterson
DOB: 7/29/96
Destiny Patterson
DOB: 7/2/98
Isaac Patterson
DOB: 7/20/00
Gabrill Patterson
DOB: 11/15/01

NOTICE OF HEARING

To: Charlotte Sherburn, Clerk of the Court; William Wellman, Attorney for the Guardian Ad Litem; Benita Miller, Guardian Ad Litem; Angela Hammer, Department of Health and Welfare; Chad Gulstrom, Attorney for Christina Patterson, Parent, Christina Patterson; Parent, Tony Cuellar; Parent, Mark Perez; Parent, Jonny Garcia; Parent, George Castellanos.

YOU AND EACH OF YOU WILL PLEASE TAKE NOTICE that a Petition for Termination of the Parent-Child Relationship has been filed by the Department of Health and Welfare of the State of Idaho which requests vesting of legal custody and guardianship of the above named children in the Department of Health and Welfare, State of Idaho, upon the grounds that it is in the best interest of the above named parents and children to terminate the parent-child relationship. A cop of petition is on file in the above entitle court.

YOU ARE FURTHER NOTIFIED that a **Hearing**, on the petition will be held on the 24th day of March, 2005 at the hour of 9:30 o’clock A.M., in the Courtroom of the above-entitled Court, in Murphy, Owyhee County, Idaho.

YOU AND EACH OF YOU ARE FURTHER NOTIFIED that you have the right to be represented by legal counsel of your choosing. If you are financially unable to pay for such counsel the court will appoint counsel to represent you in the said termination hearing.

YOU ARE FURTHER NOTIFIED that you have the right to appeal to the District Court of the above entitled court from any disposition or order of the above entitled court within forty-two (42) days of the date of filing said order or decree.

Dated this 3rd day of February, 2005.

Matthew W. Faulks
Owyhee County Prosecuting Attorney
2/16,23;3/2/05

Buy it, sell it,
trade it, rent it...
in the

Classifieds!

Public notices

**NOTICE OF MEETING
TO NOMINATE A GROWER
MEMBER
OF THE IDAHO POTATO
COMMISSION**

Notice is hereby given that on Tuesday, March 8, 2005 at 7:00 p.m. in the Nampa Room of the Shilo Inn, 1401 Shilo Drive, Nampa, Idaho, nominations for one grower member of the Idaho Potato Commission may be made by qualified potato growers residing in District No. 3, which includes Owyhee, Ada, Canyon, Gem, Payette, Washington, Adams, Idaho, Lewis, Nez Perce, Clearwater, Latah, Benewah, Shoshone, Kootenai, Bonner and Boundary counties. Said growers may nominate three qualified growers for the vacancy from whom one will be appointed to the Commission by Governor Dirk Kempthorne.

Dated: February 8, 2005
/s/ Frank W. Muir
President/CEO
Idaho Potato Commission
2/16,23/05

**NOTICE TO CREDITORS
SP 04-02180
IN THE DISTRICT COURT
OF THE THIRD JUDICIAL
DISTRICT OF
THE STATE OF IDAHO, IN
AND FOR THE COUNTY OF
OWYHEE
MAGISTRATES DIVISION**

In the matter of the estate of Mark Bryan Headley, Sr., Deceased.

Notice is hereby given that Mark Headley, Jr. has been appointed Personal Representative of the above-named decedent. All persons having claims against the decedent or the estate of the decedent are required to present their claims within four months after the date of the first publication of this Notice or said claims will be forever barred.

Claims must be presented to the undersigned at the address indicated below, and filed with the Clerk of the Court.

Dated this 9th day of February, 2005.

/s/ Audrey Numbers
Attorney for Personal
Representative
611 W. Hays Street
P.O. Box 9364
Boise, Idaho 83707
Telephone: (208) 424-0800
Fax No.: (208) 343-5791
ISB No. 4826
Attorney for Petitioner
2/16,23;3/2/05

**NOTICE OF CREDITORS
CASE NO. SPIE 0500020M
IN THE DISTRICT COURT
OF THE FOURTH JUDICIAL
DISTRICT OF
THE STATE OF IDAHO, IN
AND FOR THE COUNTY OF
ADA**

IN THE MATTER OF THE
ESTATE OF
HAROLD EDWARD CORN,
Deceased.

NOTICE IS HEREBY GIVEN that the undersigned has been appointed personal representative of the above-named decedent. All persons having claims against the decedent or the estate are required to present their claims within four months after the date of the first publication of this Notice or said claims will be forever barred.

Claims must be presented to the undersigned at the address indicated, and filed with the Clerk of the Court.

DATED this 25 day of January, 2005.

/s/ Rodney L. Corn, Personal
Representative

c/o Beem@n Law Offices
Kelly I. Beeman, Attorney for
Applicant
710 ½ W. Franklin, Suite 201
Boise, ID 83702
(208) 345-3045
2/2,9,16/05

**NOTICE OF TRUSTEE'S
SALE**

On the 9th day of June, 2005, at the hour of 10:30 A.M., of said day, (recognized local time), in the lobby of the Owyhee County Courthouse, Murphy, in the County of Owyhee, State of Idaho.

First American Title Company of Idaho, Inc., an Idaho Corporation, as successor trustee, will sell at public auction, to the highest bidder, for certified funds, or the equivalent, which is lawful money of the United States of America, all payable at the time of sale in compliance with Section 45-1506(9) Idaho Code, the following described real property, situated in the County of Owyhee, State of Idaho, and described as follows, to-wit:

**SEE ATTACHED EXHIBIT
A**

The Trustee has no knowledge of a more particular description of the above referenced real property, but for purposes of compliance with Section 60-113 Idaho Code, the Trustee has been informed that according to the County Assessors office, the address of 4003 Pioneer Road, Homedale, Idaho, is sometimes associated with said real property.

Said sale will be made without covenant or warranty regarding title, possession or encumbrances to satisfy the obligation secured by and pursuant to the power of sale conferred in the deed of trust executed by Brenda Lee Garrett, aka Brenda Lee Payne, an unmarried woman, as grantor, to FIRST AMERICAN TITLE COMPANY OF IDAHO, INC., an Idaho Corporation, as successor trustee, for the benefit and security of Mortgage Electronic Registration Systems, Inc., (solely as nominee for Lender, and Lender's successors and assigns), as beneficiary, recorded May 14, 2003, as Instrument No. 243497, Mortgage Records of Owyhee County, Idaho.

THE ABOVE GRANTORS ARE NAMED TO COMPLY WITH SECTION 45-1506(4)(A), IDAHO CODE. NO REPRESENTATION IS MADE THAT THEY ARE, OR ARE NOT, PRESENTLY RESPONSIBLE FOR THIS OBLIGATION.

The default for which this sale is to be made is the failure to pay when due, under Deed of Trust Note, the monthly payments for Principal, Interest and Impounds \$423.81 with a change to \$418.27 (eff, 09-01-04), due per month for the months of May through December, 2004 and all subsequent payments until the date of sale or reinstatement, with a monthly late charge accruing at \$14.69, uncollected late charges are due in the amount of \$117.52 with interest accruing at 6% per annum, and continuing to accrue from April 1, 2004. The principal balance owing as of this date on the obligation secured by said Deed of Trust is \$56,108.83, plus accruing interest, costs and advances. All delinquent amounts are now due, together with accruing late charges and interest, unpaid and accruing taxes, assessments, trustee's fees, attorney's fees, and any amounts advanced to protect the security associated

with this foreclosure and that the beneficiary elects to sell or cause the trust property to be sold to satisfy said obligation.

Date: February 2, 2005
FIRST AMERICAN TITLE
COMPANY OF IDAHO, INC.

By Monine Cole, Trust Officer
FA-18860/wm-sea-va

First American Title Company of Idaho

Trust Dept. 1-208-375-0455

EXHIBIT A

Attached to Notice of Trustee's Sale

In Township 3 North, Range 5 West, B.M., Owyhee County, Idaho Section 15: A parcel of land being apportion of the NE1/4 NW1/4 of Section 15, T3N, R5W, further described as follows:

COMMENCING at a found 5/8" iron pin with a 1-1/2" aluminum cap monumenting the North Quarter Corner of said Section 15, from which a found 1/2" iron pin monumenting the Northwest Corner of said Section 15 bears South 89° 39' 10" West 2,610.82 feet; thence along the Northerly boundary line of said NE1/4 NW1/4 of Section 15 (also being the center line of Pioneer Road),

South 89° 39' 10" West 501.24 feet to a PK nail and washer stamped LS 944, being the TRUE POINT OF BEGINNING; thence leaving said Northerly boundary and said center line, running parallel with the Easterly boundary of said NE1/4 NW1/4 of Section 15,

South 00° 35' 42" East 25.00 feet to a 5/8" iron pin and plastic cap marked LS 944, marking a point on the Southerly right-of-way of said Pioneer Road; thence leaving said Southerly right-of-way and continuing parallel with said Easterly boundary

South 00° 35' 42" East 558.33 feet to a 5/8" iron pin and plastic cap marked LS 944; thence continuing parallel with said Easterly boundary
South 00° 35' 42" East 10.00 feet to the centerline of an irrigation ditch; thence along said irrigation ditch center line

North 77° 59' 35" West 115.24 feet; thence leaving said irrigation ditch center line and running parallel with said Easterly boundary line of the NE1/4 NW1/4 of Section 15,

North 00° 35' 42" West 10.00 feet to a 5/8" iron pin and plastic cap marked LS 944; thence continuing parallel with said Easterly boundary

North 00° 35' 42" West 533.68 feet to a 5/8" iron pin and plastic cap marked LS 944, marking a point on the said Southerly right-of-way of Pioneer Road; thence leaving said Southerly right-of-way and continuing parallel with said Easterly boundary

North 00° 35' 42" West 25.00 feet to a PK nail and washer stamped LS 944, marking a point on the said Northerly boundary line of the NE1/4 NW1/4 of Section 15 and the said center line of Pioneer Road; thence along said Northerly boundary and said center line of Pioneer Road

North 89° 39' 10" East 112.46 feet to the TRUE POINT OF BEGINNING.

Amy L. Wilcoxson, Trustee
Verification

2/16,23;3/2,9/05

**NOTICE OF TRUSTEE'S
SALE**

On the 9th day of June, 2005, at the hour of 10:45 A.M., of said day, (recognized local time),

in the lobby of the Owyhee County Courthouse, Murphy, in the County of Owyhee, State of Idaho.

First American Title Company of Idaho, Inc., an Idaho Corporation, as successor trustee, will sell at public auction, to the highest bidder, for certified funds, or the equivalent, which is lawful money of the United States of America, all payable at the time of sale in compliance with Section 45-1506(9) Idaho Code, the following described real property, situated in the County of Owyhee, State of Idaho, and described as follows, to-wit:

**SEE ATTACHED EXHIBIT
A**

The Trustee has no knowledge of a more particular description of the above referenced real property, but for purposes of compliance with Section 60-113 Idaho Code, the Trustee has been informed that according to the County Assessors office, the address of 12635 Trail Drive Lane, fka HC79 Box 63E, Melba, Idaho, is sometimes associated with said real property.

Said sale will be made without covenant or warranty regarding title, possession or encumbrances to satisfy the obligation secured by and pursuant to the power of sale conferred in the deed of trust executed by William F. Maxwell and Ramona L. Maxwell, husband and wife, as grantors, to FIRST AMERICAN TITLE COMPANY OF IDAHO, INC., an Idaho Corporation, as successor trustee, for the benefit and security of Far West Mortgage, as beneficiary, recorded December 7, 2001, as Instrument No. 238046, and assigned to Chase Home Finance, LLC, as beneficiary by assignment recorded January 27, 2005, as Instrument No. 250720, Mortgage Records of Owyhee County, Idaho.

THE ABOVE GRANTORS ARE NAMED TO COMPLY WITH SECTION 45-1506(4)(A), IDAHO CODE. NO REPRESENTATION IS MADE THAT THEY ARE, OR ARE NOT, PRESENTLY RESPONSIBLE FOR THIS OBLIGATION.

The default for which this sale is to be made is the failure to pay when due, under Deed of Trust Note, the monthly payments for Principal, Interest and Impounds \$704.77 due per month for the months of September through December, 2004 and all subsequent payments until the date of sale or reinstatement, with a monthly late charge accruing at \$31.53, uncollected late charges are due in the amount of \$126.12 with interest accruing at 6.875% per annum, and continuing to accrue from August 1, 2004. The principal balance owing as of this date on the obligation secured by said Deed of Trust is \$93,272.61, plus accruing interest, costs and advances. All delinquent amounts are now due, together with accruing late charges and interest, unpaid and accruing taxes, assessments, trustee's fees, attorney's fees, and any amounts advanced to protect the security associated with this foreclosure and that the beneficiary elects to sell or cause the trust property to be sold to satisfy said obligation.

Date: February 1, 2005

FIRST AMERICAN TITLE
COMPANY OF IDAHO, INC.

By Jana M. Artis, Jr., Trust Officer

FA-18836/rcb-CHF

First American Title Company of Idaho

Trust Dept. 1-208-375-0455
EXHIBIT A

Attached to Notice of Trustee's Sale

A part of the West Half of the Northeast Quarter of the Northwest Quarter of Section 14, Township 1 South, Range 3 West, Boise Meridian, Owyhee County, Idaho, more particularly described to-wit:

COMMENCING at the Northwest corner of Section 14, Township 1 South, Range 3 West, Boise Meridian, Owyhee County, Idaho; thence

South 89° 14' 45" East 1,327.39 feet along the North line of said Section 14 to the Northwest corner of the said Northeast quarter of the Northwest Quarter; thence

South 0° 41' 50" West 333.41 feet, along the West line of the said Northeast Quarter of the Northwest Quarter, to the INITIAL POINT of this description; thence continue

South 0° 41' 50" West 333.42 feet; thence

South 89° 17' 42" East 663.31 feet, to a point on the East line of the said West Half; thence

North 0° 43' 50" East 333.31 feet along the East line; thence

North 89° 16' 13" West 663.50 feet, to the INITIAL POINT of this description.

EXCEPTING THEREFROM: COMMENCING at the INITIAL POINT of the above described tract, being the INITIAL POINT of this exception; thence continuing

South 0° 41' 50" West 161.00 feet, along the West line of the said Northeast Quarter of the Northwest Quarter to a point; thence

South 89° 16' 13" East 270.00 feet to a point; thence

North 0° 43' 50" East 161.00 feet to a point; thence

North 89° 16' 13" West 270.00 feet to the INITIAL POINT of this description.

ALSO EXCEPTING THEREFROM:

A part of the West Half of the Northeast Quarter of the Northwest Quarter of Section 14, Township 1 South, Range 3 West, Boise Meridian, Owyhee County, Idaho, more particularly described to-wit:

COMMENCING at the Northwest corner of Section 14, Township 1 South, Range 3 West, Boise Meridian, Owyhee County, Idaho; thence

South 89° 14' 45" East 1,327.39 feet along the North line of said Section 14 to the Northwest corner of the said Northeast Quarter of the Northwest Quarter; thence

South 0° 41' 50" West 666.83 feet, along the West line of the said Northeast Quarter of the Northwest Quarter, to a point; thence South 89° 17' 42" East 663.31 feet, to a point on the East line of the said West Half of the Northeast Quarter of the Northwest Quarter of said Section 14, said point being the INITIAL POINT of this description; thence

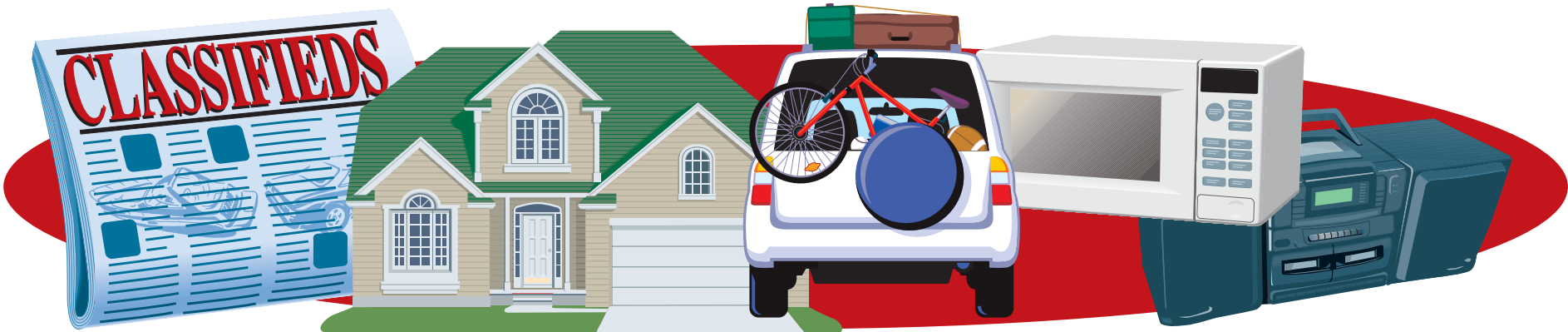
North 89° 17' 42" West a distance of 286.53 feet to a point; thence

North 00° 43' 50" East a distance of 166.57 feet to a point; thence

South 89° 17' 42" East a distance of 286.53 feet to a point; thence

South 00° 43' 50" West a distance of 166.57 feet, to the POINT OF BEGINNING.

2/16,23;3/2,9/05



School menu

February 17-23

Marsing
Feb 17: Hamburger, potato wedges, fruit, milk, soup & sandwiches, fresh salad bar 4th-12th, roll.
Feb 18: Hot dogs, rice krispy treats, vegetables, milk, submarine sandwiches, fresh salad bar 4th-12th, roll.
Feb 21: No school.
Feb 22: Chicken nuggets, cinnamon twist, fruit, milk, tostada delight, fresh salad bar 4th-12th.
Feb 23: Red Baron pizza, salad/dressing, fruit, cookies, milk, soup/sandwich, fresh salad bar 4th-12th.

Homedale Elementary
Feb 17: Chicken or beef nuggets, broccoli, cinnamon roll, fruit, milk.
Feb 18: Pizza or pop corn chicken, tossed salad, cookie, fruit, milk.
Feb 21: No school.
Feb 22: Chicken tenders or CF beef steak, mash potatoes/gravy, roll, fruit, milk.
Feb 23: Cispito or tst. Cheese sandwich, taco salad, churro, fruit, milk.

Homedale Middle
Feb 17: Chicken tenders or CF beef stk, mashed potatoes/gravy, roll, fruit bar, milk.
Feb 18: Lasagna or chicken pot pie, French bread, fruit & veggie bar, milk.
Feb 21: No school.
Feb 22: Rice bowl w/ chicken or egg rolls, vegetables, fruit bar, fortune cookie, milk.
Feb 23: Burrito or fish patty, corn, fruit & veggie bar, turnover, milk.

Homedale High
Feb 17: Chicken patty or hamburger/bun, fries/tots, fruit & veggie bar, milk.
Feb 18: Chicken taco or quesadilla, corn, fruit & veggie bar, milk.
Feb 21: No school.
Feb 22: Chicken nuggets or hot dog, rice, green beans, fruit & veggie bar, milk.
Feb 23: Idaho haystack or burrito, fruit & veggie bar, cinnamon roll, milk.

Bruneau schools
Feb 17: Haystacks, corn, fruit salad, cinnamon twists, milk.
Feb 18: Tuna sandwich, tots, veggies, fruit, cookie, milk.
Feb 21: No school.
Feb 22: Chili & crackers, coleslaw, applesauce, cinnamon roll, milk.
Feb 23: Weiner wraps, potato wraps, veggies, fruit, brownie, milk.

Please enter my subscription to the Owyhee Avalanche now! Enclosed is \$_____

NAME_____

ADDRESS_____

CITY_____

STATE_____ZIP_____

SUBSCRIPTION RATES:

Owyhee County.....\$31.80

Canyon, Ada and Malheur Counties.....\$37.10

Elsewhere\$42.00

Idaho Sales Tax included

The Owyhee Avalanche

P.O. BOX 97 • HOMEDALE , ID 83628

THANK YOU
We would like to send a big heart felt thank you to our family, friends, and neighbors for their help and support since the loss of our home. A big thanks to Homedale Drive-In, Rafter 4 Feed store, Friends Community Church, the Homedale High School staff, the kitchen girls at all three lunch rooms, and each and everyone for their kind gifts. We can't express our appreciation enough to the great guys in our Homedale, Marsing & Wilder fire departments. What a great job they did. You are the best, so professional and so very compassionate. Thanks so much for your kindness. Larry & Carol Rudd

The Family members of Ted Blackstock Sr. Would like to send our sincere gratitude and appreciation towards the though htfulness expressed by friends and the Lady's of the Marsing community, after the loss of our loved one. Thank you, the family of Ted Blackstock Sr.
The family of Peach Gluch would like to extend their heartfelt thanks to our friends, family and neighbors for your support and sympathy during the loss of our loved one. We are deeply grateful.
The family of Bob Ishibashi would like to say thank you to all of those that have shown how much they care. The phone calls, cards, visits, flowers & food were greatly appreciated. Thanks to the Homedale Women's Bowling Association who helped set up dinner at the Legion Hall. It was delicious and a very thoughtful thing to do. Thanks to Jim Huls for officiating the memorial service & Aaron, Mahlon and staff at Flahiff's for being so helpful and caring. Many thanks again from the family of Bob Ishibashi

Need Cash?

I CAN HELP!

❖ Buying Houses & Property

❖ Buying Contracts

❖ Loaning Money on Real Estate Equity


❖ Buying Estates

Call Mike Vance
337-5126

PUBLIC HEARING

Southwestern Idaho Cooperative Housing Authority (SICHA) has developed its agency plan in compliance with the Quality Housing and Work Responsibility Act of 1998.

The plan, attachments and support documents are available for review at the SICHA administrative office located at 1108 West Finch Drive, Nampa, Idaho 83651 between the public business hours of 9:30 a.m and 3:30 p.m. In Owyhee County, the plan and attachments can be examined at the El-Ada Community Center, 15 West Colorado, Homedale, Idaho. In addition, a Public Hearing will be held at the SICHA administrative office in Nampa at the address indicated above on April 15, 2005 at 2:00 p.m. The public is invited to attend.

EQUAL HOUSING OPPORTUNITY

FARM EQUIPMENT RETIREMENT AUCTION
SATURDAY, FEBRUARY 26, 2005
OWNER: LYNN TAGGART FARMS

Located: From Homedale ID 1 ½ miles South on Hwy 95 to 3886 Hwy 95. Signs Posted.
Sale Starts: 11:00 AM/MT Lunch Served.
Terms: Cash or bankable check sale day. No buyer's premium. No Credit Cards.
TRACTORS: Case 2290 PS trans, deluxe cab, 2 hyd remotes, 18.4 X 38 new rubber 1 owner • Case 970 cab, 2 hyd remotes, new 15.5 X 38 powershift rubber • Case 300 gas, 3pt wide front, exc cond. • Case 300 gas, 3pt single front, exc cond. • set of 18.4 X 38 snap on duals • set of 12.4 X 46 Kleber tires w/step up rings • set of 15.5 X 38 snap on duals • set of 12.4 X 28 duals • set of 7.50 X 16 single rib front tires
TRUCKS: 1977 IHC Loadstar 1700 tandem, V-8 5spd 3spd, 18' combination bed & hoist • 1972 Dodge tandem axle, V-8, 5spd 4spd, 20' bed & hoist • 1963 IHC tandem, V-8, 5spd 3spd, 18' bed & hoist
ROCK PICKER: Nyssa Machine Lockwood conversion rock picker
TILLAGE: Ace 12' groundhog smyzer front & rear • Brillion 12' roller harrow • Martin 16' tire roller • Alloway 2130 6 row cultivator, exc cond. • JD 210 14' tandem disc • JD 4200 4 bottom plow • JD 8350 3 bottom plow • JD #90 5 shank ripper • JD 4 row diker • 6 row dammer diker • Lilliston 6 row rolling cultivator 4 spider • Eversman 10' landplane • hydraulic scraper • Chattin ditcher • JD 3pt rotary hoe • 10' smyzer • 10' 3K • 3 section 6' harrow • double bar w/Valley Mound shanks • 3pt post hole auger
PLANTERS: JD 6 row 71 flex planter • Milton 6 row beet planter • IHC 510 12' grain drill w/seeder • IHC #10 auger wagon • Oliver 10' grain drill on steel
HARVEST EQUIPMENT: JD 431 4 row beet lifter loader • Logan 2 row potato crossover • Lockwood mark 76 potato digger • Speedy 6 row bean cutter • Innes 6 row bean windrower • New Idea arch style side rake • Alloway double drum beater w/hyd scalpels • 4 wheel wagon • Hutchinson 42' X 6" grain auger • JD 100K thinner
SPRAYERS: Ace 200 gal SS 3pt sprayer • Ace 300 gal SS tank • set of 60 gal SS saddle tanks
SHOP EQUIPMENT: Power Mig 130 amp wire feed welder • gas powered air compressor • transfer pump • misc hand tools

BAKER AUCTION CO.
1-800-650-5808

ROGER BAKER
541-889-5808

J.B. SALUTREGUI
541-212-3278

SAM BAKER
541-889-8413

Visit our website at:
www.bakerauction.com
for pictures & full listing of this and upcoming auctions.

CONSIGNMENT AUCTION
SATURDAY, MARCH 12, 2005

Located: At the Homedale Beet Dump in Homedale ID. Signs posted.
Sale starts 10:00 AM/MT Lunch served. **Terms:** Cash or bankable check sale day. No buyer's premium. No Credit Cards.

CONIGNED BY PAUL AKICHIKA
TRACTORS: JD 4255 2wd PS trans, 2 hyd remotes, 14.9 X 46 dual rubber, exc cond.
EQUIPMENT: Monosem 6 row late style planter, exc cond. • Cosmay 3pt forklift • JD 6 row 71 flex planter w/gandy's • Lely 3pt seeder • 6 row planet Jr. • set of Ace 100 gal saddle tanks • McMillan 3pt hyd post auger • JD 3pt boom • 10' MC shredder • 3pt carrier • 3pt PTO ditch cleaner, exc cond. • set of JD forks for 3pt or front loader • JD RWA 10' tandem disc • Ace double drum beater w/scalpels • 250 gal propane weed burner w/auto wand • JD 396 6" X 42' grain auger • Ace 12' groundhog double smyzer • 4 row Lilliston rolling cultivator • JD 1530 tandem disc • JD 4200 4 bottom plow • Ace 8' plow packer • Westin 3 section cultipacker • IHC 12' vibra shank w/R&H points • Farmhand beater • 5 row disc corrugator • JD 5 shank ripper • Eversman 9' landplane • 2- 5' sections of new harrow • 10' bed harrow section

EARLY CONSIGNMENTS
TRACTORS: 1970 JD 4020, console • JD 60 w/JD 48 front loader • JD 3020, side console, new paint w/duals & weights • JD 530 w/3pt, 12.4 X 38 rubber • 2- Farmall 400's • Farmall 350 • 9N Ford, restored • Case SC w/3pt
VEHICLES: 1961 IHC w/Parma spreader box • 1996 Dodge 4X4 w/short box •1989 Dodge 4X4 1 ton w/utility box • 1979 Freightliner 13spd • 5- cross Dodge tool boxes
EQUIPMENT: N H 1032 Stack wagon • Schwartz feed wagon • 6' ground feed wagon • Sno Co feed wagon • JD 3 bottom plow • JD 10' grain drill • JD #8 mower • JD 32' combination elevator • JD 930 landplane • JD 24B 4 row planter • Hay elevator • 200 gal 3pt sprayer w/booms • 2- Hog feeders • 2- JD side rakes • Meyers 3pt hyd ditcher • JD rotary hoe • 14' shredder • 10' Triple K • Miskin 4yd carryall • Gehl corn chopper • Rhino 3pt blade • Brillion roller harrow • Eversman disc harrow • Lilliston 4 row cultivator • JD 5 shank ripper • MF 570 on land 5 bottom spinner plow • 5 row corrugator • 12' triple K w/gauge wheels • 2- D-7 Cat winches • 12' brush blade for D-7 Cat • brake drum machine • 250 fuel tank • 1360' of 6" alum mainline w/valve openers • several sets of new 15" & 16" tires
This is just a partial listing. To consign your equipment contact JB Salutregui @ 541/212-3278 or any of the Baker Auction Co. personnel listed below.

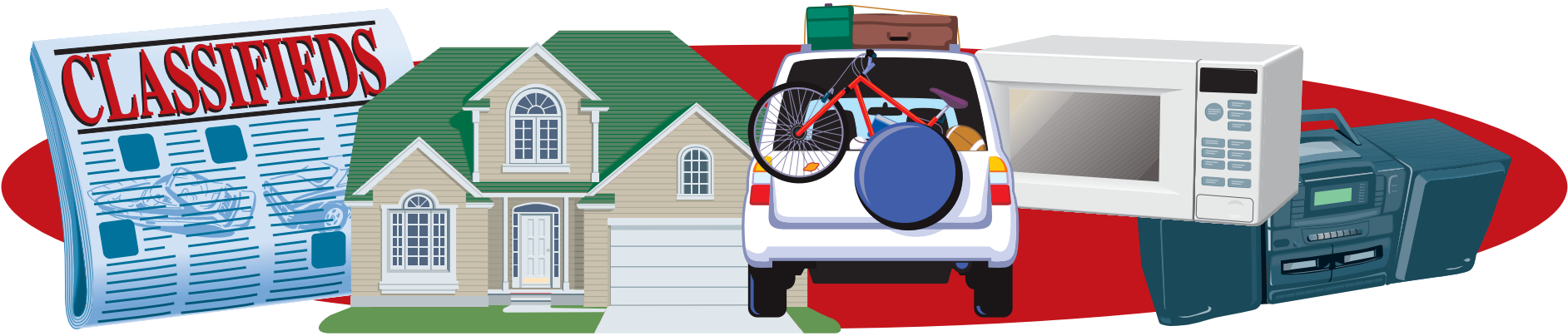
BAKER AUCTION CO.
1-800-650-5808

ROGER BAKER
541-889-5808

J.B. SALUTREGUI
541-212-3278

SAM BAKER
541-889-8413

Visit our website at:
www.bakerauction.com
for pictures & full listing of this and upcoming auctions.



REAL ESTATE
.5 ac +/- manufactured home 1050 sq. ft. 3 bed 2 bath \$70,000 Pete Re/Max Advantage 890-1658
Great house in Homedale 4 bed 2 bth 1467 sq. ft. Partly fenced w/storage shed. Pete Re/Max Advantage 890-1658

READY TO MOVE IN
HOMEDALE'S NICEST MOBILE HOME PARK
• 2 br/1 ba Built-ins, Central Air Only \$200/mo.
• 3 br/2 ba 1999 LIKE NEW Beautiful inside & out! Only \$250/mo.
(Homes to remain in Park)
Sunset Village
Mobile Home Park
401 S. Main • Homedale, Idaho
See Tom - space #42
(208) 337-5804
(208) 884-1700

Bruneau
• 320+/- ac. w/ 215+/- ac. wet. Reduced to \$285,000
• 390+/- ac. 260+/- ac. in alfalfa. natural hot water, 2 ponds. Owner may carry w/ 25% down. OAC \$450,000
Caldwell
• 78.9 +/- ac. w/ 1/2 mile Snake River Frontage, crop & pasture ground. \$946,800
Grand View
• 358+/-ac. Cattle ranch w/ 2 homes \$869,000
• 640+/-ac. w/ 2 mile Snake River Frontage. 2 homes, end of road privacy. \$1,520,000
• 900+/- ac. low elevation, row crop. NOW \$2,300,000
• 1,280+/-ac. Farm w/ pivots. 2 homes & storage bldg. \$1,824,000
Melba
• 70,000+/-ac., rated at 875 AU's. Several Homes. Snake River Frontage. \$4,000,000
OTHERS... CALL FOR FREE CATALOG

www.knipeland.com
CALL: 208/345-3163

COLDWELL BANKER
ASPEN
GEORGE WILSON
JOHN CONTI • STAN CAPOUCH
OFFICE: 896-5312
GEORGE: 573-6405 • JOHN: 880-7829 • STAN: 880-2414
View Properties At: www.idaholand4u.com
1600 sq. ft. 4 Bedroom, 2 Bath Tiled Bathrooms & Kitchen. Wraparound front porch. Open floor plan with pellet stove in Living Room. 5 Ac. with white vinyl fence. 3.5 Ac in alfalfa. 5 Ac water rights. Refrigerator, stove & dishwasher. Homedale schools, off Poiner Road. 2 Year old Berber Carpet. \$114,900
REDUCED! 1100 sq. ft. near new MF Home
New kitchen & remodeled throughout. Located in RV park on Snake River. Terms \$29,000

4 building lots, 1.75 ac in Homedale \$24,900 OWC Pete Re/Max Advantage 890-1658
River frontage listings needed. Have Buyers! **3 bed 2 bth m/h**, patio, carport, shed. Owner to repair & level roof, install tie downs, reduced drastically! **3+ ac**, lush pasture, lrg cozy home w/3 bed 2bth, grapes, fruit trees & much more. Retiring to Utah \$165,000. **2+ ac** on quiet road, new well, irrigation, lays flat, super view \$47,500. **2+ ac**, city utilities, view of Lizard Butte & the Owyhees, irrigated. \$100,000 will carry. Allotment for 120 cows, call for info. \$40,000. Nova Realty 896-4195 Marsing, Idaho.
41 acres for sale, 24 irrigated, pond, \$130,000; **144 acres for sale**, 104 irrigated, pond, creek, abundant wildlife, \$350,000. Call 337-5914.

SERVICES
Income taxes prepared. Reasonable rates. Please call 337-3795.
Daycare w/fenced yard, large play areas & close to school. Now available. Call Stacey Muir @ 337-6188
Campbell Plumbing: Service, remodel, new construction. Bonded and insured. Reasonable rates. Call 896-4328 or 880-3885
JJ Excavation and Hauling, TOP SOIL, and gravel delivery, excavator and trucks for hire. Road building, dozer, water truck and road grader. Free estimate. 208-337-4822 or 573-5700.
Dump Truck & Back hoe service, ditch cleaning & demolition. Call Steve at 465-5196 or 371-4285.
Best price for on-site computer cleaning and repair. Call Tom or Colette at 899-9419 or 896-4676, Technical Computer.
Tim's Small Engine Repair: Complete servicing & repair available on lawnmowers, tillers, wheel-line motors, motorcycles, ATVs, all 2 & 4 cycle power equipment. Karcher pressure washer factory authorized repair center. 30916 Peckham Rd., 5 miles west of Wilder. 482-7461

FOR SALE
Gated pipe 540 ft. 10 inch PVC; 660 ft. 10 inch aluminum; 780 ft. 8 inch aluminum + 90° corners, T's and plugs. 208-834-2505
Matrix snowboard w/large bindings, boots M-11, carry bag for board \$200. 337-6073
Refrigerator, bunk beds, gas dryer & weight machine. Call 337-5453
Fun piano, guitar & violin lessons. All ages 3 to 100. All levels beginning thru advanced accepted. Private lessons with professional instruction. Affordable monthly rates. Please call 283-5750
Used tractor parts 100's of salvaged farm tractors and combines. Nampa Tractor Salvage, 9055 Hwy 20, Nampa, ID 83687 (208) 467-4430
Roll ends: Great for packing material, building fires, lining birdcages or for your kids to doodle on. The Owyhee Avalanche, Homedale
Italian leather couch and loveseat. Brand new still wrapped in plastic. Retail \$2450. Must sell \$895. 208-888-1464
Bedroom set 5-piece cherry set. Brand new in box. List \$1450. Must sell \$399. 208-888-1464
Bed-queen pillowtop mattress set. Brand new, still in plastic. Must sell \$159.
Queen orthopedic set. Brand new, must sell \$129. 208-866-7476
King-sized pillowtop mattress set. New, in bag, with warranty. Must sell \$199. 208-866-7476
Cherry Sleigh bed. Solid wood. New in box. Value \$850. Sacrifice \$295. 208-888-1464

HELP WANTED
Driver's Education Instructor – 1 or 2 - 45 day sessions, must be at least 21 years of age or older and hold or be eligible to hold an Idaho State Teaching Certificate w/a Driver's Education endorsement. Contact Miren Lowry at 208-896-4111 x197 for further information.
Part-Time School Bus Driver – must be at least 21 years of age or older and hold or be eligible to obtain a Class "B" CDL (the District will assist w/CDL training). Hours vary depending on need. Depending on interest and qualifications of candidate, position may be combined w/other positions available in the District. Contact Miren Lowry at 208-896-4111 x197 for further information.
Part-Time Kitchen Assistant – 19 hours per week, hours may vary based on need. High School Diploma or GED required. Prior training or experience with food preparation/sanitation, etc. required. Depending on interest and qualifications of candidate, position may be combined w/other positions available in the District. Contact Miren Lowry at 208-896-4111 x197 for further information.

JW Sharpening Service
Small Engine Repair
208-337-3556
Pickup Stations:
Marsing: Harvey's Auto Center
Wilder: Wilder Building Center
J.W. SHARPENING 26531 BELLA VISTA DR. John Deere
Batt Corner Road 56 miles to Wilder
337-3556 Homedale Snake River

Become a VISTA VOLUNTEER, a rewarding job that enhances your Resume. Serve as a VISTA member for a year. Two openings (1 in Homedale) in various programs working with dynamic teams, developing and providing services to children, youth, and elderly. Call 345-6031 Ext. 101 today for position descriptions and information about program stipends and benefits.
Owyhee County Sheriff will be accepting applications for a position in the Owyhee County Jail. Applicants must be able to use a computer, meet the physical fitness standards and requirements for Idaho Peace Officers and Standards academy, and pass written and verbal tests. Applicants will be chosen based on standardized scoring. Applicants must be able to pass a drug screening test and a polygraph. Applications may be picked up at the Owyhee County Sheriff's Office in Murphy or the Marsing City Hall. Applications must be filled out completely in order to be considered for employment. Applications must be received by February 28th 2005 by 5:00pm. Acceptable applicants will be notified of the dates and times for testing. Owyhee County is an equal opportunity employer.

VEHICLES
98 Cadillac Seville 90,000 miles, \$9,999 factory warranty good to 100,000 miles 482-6447 or 880-8190
2005 ATV's New 50cc, 110cc, 150cc, 250cc. Great prices call for details. 896-5720

FARM AND RANCH
Bulls – Salers, Angus & optimizers, yearling & 2 yr. olds, B&B Livestock, New Plymouth 278-3518
Hay for sale: Alfalfa & grass mix, 1st & 2nd cutting, no rain, small bales, \$2 a bale. 337-3690
21 tons 2nd cutting of hay, 1260 pound bales, excellent quality, no rain \$80 ton. 337-8018

Farm ground for rent: 12-18 acres \$100 per acre or ? share crop ? or other offer ? 337-3912
Wanted: Row crop farmland to rent, Homedale area. 337-3936 or 941-9417

NOTICE
Ring Leaders Club Lamb Sale. 4-H & FFA projects! Plan now to attend April 30th 11am @ Western Idaho Fairgrounds. Approx. 60 head from Idaho's top breeders will sell. 887-0886
Notice of Sale BE advised, according to Idaho Code S55-2306, all interest the tenants may possess in the contents of the rental unit No. 16 will be sold at public auction to the highest bidder, for nonpayment of rent and other charges. Ellen Boatman, PO Box 296, Marsing, Id 83639. The sale will commence at 12:00 P.M. February 26th, 2005 at Marsing Storage on Van Road, Marsing, Idaho.

FOR RENT
Homdale, 3 bdrm plus, 1 ½ bath home, w/appliances, fenced yard, no pets, yard care; near grade school; \$600/mo + \$500/dep; 337-5066
Wilder Housing Authority has rental units available at Chula Vista. These are partially furnished 2 and 3 bedroom units. Rent is from \$335 mo. to \$365 mo. This includes water/sewer/trash and lawn care. For more information call 208-482-7750 or come to the office at the corner of Hwy 95 and Hwy 19 on the south side of Wilder, P.O. Box 685, Wilder, ID 83676. We do business in accordance with Federal Fair Housing Law.
5x10 unit available, Marsing Storage 343-9855 or 867-2466

HOMEDALE GARDEN APARTMENTS
APARTMENTS ARE AVAILABLE
FOR SENIOR CITIZENS and/or HANDICAPPED OR DISABLED PERSONS
RENT BASED ON INCOME
USDA/RURAL DEVELOPMENT FINANCED
COME IN OR GIVE US A CALL: (208)337-4715
409 S. 1st st. W.
HOMEDALE, IDAHO 83628

"I felt like I wasn't alone looking for a job. There were people who cared about what happened to me."

WORKSOURCE
Register for work, explore training options, attend workshops, access job listings, apply for jobs, and much more!
Visit the WorkSOURCE Career Center or an IdahoWorks Career Connection.
For the nearest location:
208.323.JOBS - 800.743.5928
TTY/TTD - 208.319.0907
www.worksourceidaho.com
IDAHO IdahoWorks.org



Snake River Mart





PRESIDENTS' DAY SALE

Boneless Pork
Sirloin Chops

 **\$1.99**
lb.

**Petite Sirloin
Steak**

 **\$2.99**
lb.
Boneless Beef

Seedless Grapes

 **\$1.19**
lb.

**Nectarines &
Peaches**

 **99¢**
lb.

Boneless Beef
Cross Rib Roast

 **\$2.19**
lb.

Boneless Beef
Stew Meat

 **\$2.39**
lb.

Dole
Salad Mix

 **\$1.69**
ea.

Cello Wrapped Whole
Mushrooms

 **\$1.29**
ea.
8 oz.

1 lb.
Imitation Crab **\$1.79** ea.
Bar-S 16 oz.
Meat Franks **79¢** ea.
Bar-S 16 oz.
Bologna **89¢** ea.

Western Family 2 lb.
Cheese **\$5.99** ea.
Western Family 12 oz.
IWS Cheese **3 for \$5**
Pork Sirloin Roast **\$1.89** lb.

Tomatoes **79¢** lb.
10 lb.
Potatoes **\$1.29** ea.
Cauliflower, head **89¢** ea.

Red & Green
Bell Peppers **3 for \$1**
Apples & Oranges **59¢** lb.
Cello Wrapped
Lettuce **79¢** ea.

Western Family Milk
Whole, 2%, 1%, Skim

 **2 for \$5**
1 Gallon

Western Family 12 oz.
Frozen Orange Juice **69¢** ea.

**Ragu Spaghetti
Sauce**

 **\$1.49**
ea.
16-26 oz.

Western Family 16 oz.
Cottage Cheese & Sour Cream **99¢** ea.

Folgers Coffee

 **\$4.99**
ea.
34.5 oz.

Eddy's 24 oz.
Giant Sandwich Bread **2 for \$3**

Budweiser Beer
Regular & Light

 **\$12.49**
ea.
18 Pack Cans or Bottles

12 Pack Bottles
Michelob Beer **\$9.99** ea.

Tide
Laundry Detergent

 **\$5.99**
ea.

Asst'd Liquid & Powders

Lipton
Noodles & Sauce **5 for \$5**

General Mills Cereal
**Cheerios - Total
& Lucky Charms**

 **4 for \$10**
14-15 oz.

American Beauty 16 oz.
Pasta **59¢** ea.

Western Family
Dry Cat Food

 **\$5.99**
ea.
14 lb. all flavors

Western Family 10 lb.
Sugar **\$3.69** ea.

Pepsi Cola

 **3 for \$9.99**
12 Pack Cans

Pepsi Products
2 Liter **\$1.19** ea.

Doritos
Tortilla Chips **2 for \$4**
13 oz.

Skippy
Peanut Butter **\$1.89** ea.
18 oz.

Inland Valley
Frozen Potatoes **3 for \$5**
24-32 oz.

Bounty
Paper Towels **\$5.99** ea.
8 Roll

Chef Boy Ardee
Canned Pasta **5 for \$5**
14.5-15 oz.

Western Family
Apple & Cherry
Pie Filling 20 oz. **\$1.49** ea.

Wonder
Large Bread **2 for \$3**
24 oz.

Western Family
Apple Sauce **2 for \$3**
48 oz.

Hormel
Chili **4 for \$5**
15 oz.

Cheetos &
Fritos **\$1.89** ea.
9.5-10 oz.

Western Family
Dry Chunk Style
Dog Food 20 lb. **\$5.99** ea.

Kellogg's
Raisin Bran **\$2.49** ea.
20 oz.

HOURS: Mon. - Sat. 6:00 a.m. to 10:00 p.m. - Sunday 7:00 a.m. to 9:00 p.m.
Marsing, Idaho

WE RESERVE THE RIGHT TO LIMIT QUANTITIES AND CORRECT PRINTED ERRORS • PRICES EFFECTIVE 2/16/05 thru 2/22/05