

# The Owyhee Avalanche

VOLUME 21, NUMBER 2

HOMEDALE, OWYHEE COUNTY, IDAHO

SEVENTY-FIVE CENTS

## Superintendent calls it quits

After 37 years involved in education, Homedale School District Superintendent Bob Lisonbee is calling it quits. He submitted a letter to the board of trustees announcing his intentions to retire at the end of this school year. Lisonbee has been the superintendent for the district for nine years.

"I have always hoped that I would sense within myself when it was time to retire," Lisonbee said in his letter to the board. "I feel that time has come and so I am announcing my retirement effective July 1, 2005. I hope I will always be able to keep working, but I am retiring from the field of education."

Lisonbee's contract is usually extended for two years, every January. But last January, a motion to extend the superintendent's contract died due to lack of a second. Lisonbee said last year that he was not concerned about his job just because the contract was not extended.

"It has been a rewarding journey," Lisonbee continued. "I hope that I have touched eternity in a small way as I have taught and served students over these

years. To me education has been more of a mission than a vocation. I have enjoyed greatly my associations with students, parents, colleagues, district patrons and school board members."



Bob Lisonbee

Lisonbee told the board that he wanted to make it very clear that he was not retiring because of the board, because of pressure to do so by any other source or because of events in the school district. He said he felt it was time to take the "next step in my life."

Recently high school athletic director Randy Potter was not renewed as the district's athletic director. Several people submitted letters in Potter's defense and some have said they think Potter was removed because of personal vendettas from the board. But board members say they removed Potter for good reasons which they cannot discuss because of privacy issues.

Lisonbee said his decision is not because the board did not extend his contract last year or because of the recent incident with Potter. He said he feels it is

— to page 5

## GRAND THEFT AUTO



A wrecker (left) was one of two impounded last Friday from the Ehlers residence on Clark Road south of Marsing for use in the commission of a felony, grand theft auto. Four vehicles at the residence were confirmed stolen. The structure (center) was full of tools and equipment.

## Sheriff's Office recovers stolen property

Owyhee County Sheriff's deputies are searching for two local men who could face multiple charges of felony possession of stolen property and felony possession of stolen vehicles after officers discovered thousands of tools, several stolen vehicles, miscellaneous items and construction equipment at a home on Clark Road near Marsing.

The stakeout began last week when officers noticed suspicious activities at the home on Clark Road. County Sheriff Gary Aman said several cars, tools, bikes and construction equipment were

found, some of which has been confirmed stolen and some he suspects is stolen. He said as of Friday, four vehicles had been confirmed as being stolen and now the department is trying to locate owners of thousands of additional property.

A report of a stolen motor home and boat was received on Tuesday and officers received a tip that the stolen vehicles may be at the Clark Road home. The motor home and boat were not found at the home, but several other stolen vehicles were discovered.

"Some of the stuff still has names on it, some of it has names or serial numbers ground off," Aman said from the scene Friday morning. "There are about thirty vehicles out here and we are having a tough time tracking some of them."

Aman said Travis Ehlers, 34, lived in the home with his wife and a 10 year old daughter. He said Ehlers and a Nampa man, Jason Leslie, 34, were being sought in connection with the crime. Brenda Ehlers, 32, wife of Travis Ehlers, is wanted for

— to page 2

## Wilson ranchers named Farmer Conservationists of the Year

The Owyhee Soil and Conservation District have named a three-generation ranching couple Farmer Conservationists of the Year during a banquet held Friday night in Marsing. Richard and Connie Brandau were recognized for their excellence in conservation of resources.

"They exemplify the philosophy established by Richard's grand father and dad of 'really wear your water out,' a statement that has guided their ranching, farming and business decisions for decades," Ray Mansisidor, treasurer of the Owyhee Soil Conservation District said during the banquet Friday evening. "Their ranch is classified as 'meadow ground' in the tax books. This means they live on a live-water ranch. No water used for their home, the corrals, nor the fields comes from a reservoir, nor is it pumped from the Snake River."

The Brandau Family has been in Owyhee County for three generations. Richard's grandfather, George, came from Germany in 1903. He met and married Minnie Olsen and bought a 160-acre

home place on Reynolds Creek south of Marsing in the Wilson community. He added to the ranch by homesteading to 400 acres.

In 1948, Richard's father, Hen-

ry, bought the home place from George and expanded the traditions started earlier. In 1955, the Henry bought a grazing section of land near Cottonwood Creek to improve his cattle operation.

In 1967, Richard met and married Connie and settled on another 400 acres up the creek from the home place. Richard and his dad had the opportunity to farm together for 35 years. In 2000, Richard bought the home place from his dad. Today they operate a cow calf business and grow alfalfa hay. Connie is the elected water master and treasurer for the Reynolds Creek District 57R.

"Rich and Connie have done many things on their land to improve efficient and wise use of resources," Mansisidor said.

Some (not all) of those practices include planting Paiute orchard grass with their alfalfa to

— to page 5



Honored farmers

Ray Mansisidor, treasurer of the Owyhee Soil Conservation District, honors Richard and Connie Brandau with a plaque during a soil conservation banquet Friday night.

## Inside

**Honor society raises funds for Tsunami victims**

page 3

**City rec offers winter programs**

page 4

**Obituary**

page 6

**Sports**

pages 10-11



From page 1

✓ Grand theft

questioning.

“Ehlers’ wife and daughter were staying at a friend’s house last night,” Aman said Friday. “We got a call this morning that his wife had packed up and left some time during the night and Ehlers called family members and told them that his grandfather was no longer being taken care of. Right now we don’t know where they are, but we will find them.”

Aman said the elderly man was suffering from Alzheimer’s disease and was unaware of what

was happening on the property.

Detectives and officers from Nampa Police Department, state investigators from the Idaho Transportation Department and Canyon County Sheriff’s office were on scene to help identify some of the property. Aman estimated that nearly \$50,000 in stolen property had been recovered. He said an exact amount would not be available for some time. Several county deputies and posse members were on scene to help as well.

“We had a report of a stolen boat and motor home in Marsing,” Aman said of the investigation. “A reporting party said they had seen a wrecker, which is on this property, driving up



*This trolling motor, which was found at the scene, came from a boat stolen from Marsing last Tuesday.*

and down the road the night of the theft. One of my officers identified one of the wreckers as transporting vehicles earlier in the day. We ran a check on the two vehicles and they came back clean. Thursday, ILETS contacted us and reported that one of the vehicles ran had just been reported stolen from Nampa. The other vehicle on the wrecker was also stolen. So we got a search warrant and now have four confirmed stolen and could have many more.”

Aman said several vehicles had the ignition punched out. A key maker machine was also found. He said a whole kit to rebuild an ignition was found. Property from the boat reported missing earlier in the week was also found on the property.

“It appears they were either having people steal the cars and store them somewhere else then bringing them out here or they were stealing them, taking them somewhere else and then bringing them here,” Aman explained. “They are backyard mechanics. They were parting them out and rebuilding cars. We have a trailer with about \$10,000 worth of construction equipment sitting in it.”

The boat and motor home were located in Nampa at a livestock company and were returned to Dianna Branin of Marsing. Dispatchers said Branin recovered the vehicles on Sunday.

Aman said the department might have to open the property up to the public for identification. He said some of the items might never be given back to their owners.



Warrant search

*Owyhee County Sheriff’s Deputy Perry Grant and posse member John Cossel search a shed at a home on Clark Road Friday morning. Three people are being sought in connection with possession of stolen property.*



Stolen equipment

*Owyhee County Sheriff Gary Aman shows a trailer full of stolen construction site equipment found at a home on Clark Road last week.*



Investigation

*State of Idaho investigators from the Idaho Transportation Department check vehicles at a Marsing home after discovering several stolen vehicles last week. Four vehicles were confirmed stolen and many others are being checked by the county sheriff’s office.*

Former school board trustee accused of battery

A former school board trustee and former commissioner for Owyhee County has been accused of battery and malicious injury to property after a confrontation Thursday night, which sent his son to a local hospital.

Jake Hyer, 24 of Homedale signed citations against his father, George Hyer, also of Homedale, for the charges, but city police officer Jamie Austin said due to very conflicting stories, the case would be sent to the city’s attorney before charges are filed.



*George Hyer*

Austin said Friday that the elder Hyer is accused of breaking in the door of Jake’s home at about 8 p.m. Thursday evening. Austin said Jake received injuries to his arms after his father broke a window in the door.

“Apparently they had a confrontation in the home and Jake kicked George out,” Austin said. “Apparently this has been brewing for a while.

“I interviewed George on Friday and due to very conflicting stories, a report will be sent to the city’s prosecuting attorney before charges are filed.”

Austin said he searched for George at a wrestling match at the high school but was unable to locate him. He said Hyer would be cited later in the week. He said Jake had signed the citations against his father.

George is the father of six boys and owns a farm near Homedale. He is a business owner operating Hyer and Sons Ranch. He was elected as a school board trustee in 2001 but was defeated by Kurt Shanley last year. Jake also ran for a position on the board with his father, but was also defeated.

Besides being a former school board trustee and county commissioner, George has been a member of the rodeo board and on the county posse team.

WORLD’S TOUGHEST ATVs

2005 SPORTSMAN 800 TWIN EFI

FREE GARMIN GPS\*  
AND 6.9% FINANCING\*

Choose from 6 all-new Sportsman models, including the 800 Twin EFI • Smoothest riding Sportsman ever, wider stance, 22% more travel • Tough new styling • New radial tires (option on 400), brighter headlights, dual taillights, rear work lights, rear toolbox, receiver hitch • World’s best-selling automatic transmission • Legendary smooth IRS with 11.25 in/28.6 cm ground clearance • Exclusive On-Demand All-Wheel Drive • Hurry in for incredible deals!

GRIZZLY SPORTS

Sales • Parts • Service • Accessories

5604 Cleveland Blvd. • Caldwell, ID • 454-8508

\*Offer valid 1/1/2005 – 2/28/2005 at participating United States Polaris dealers and subject to product availability. Finance offer valid subject to credit approval on the Polaris Standard credit card and on qualified consumer purchases financed during the promotion period. Minimum finance amount \$10,000. The promotional fixed Annual Percentage Rate ("APR") of 6.9% and reduced minimum monthly payment of \$69 of the purchase amount (rounded to the next higher dollar) are effective from the date of purchase and continuing for a period of 36 months. Thereafter, the APR and minimum monthly payment applicable to this purchase will increase to the minimum monthly payment specified in the Cardholder Agreement and the Standard APR of 17.9%. For accounts not kept current, the Default APR of 21.9% will apply to all balances. This promotion is available only at participating dealers. Certain rules apply to the allocation of payments and Finance Charges on your promotional purchase if you make more than one purchase on your Polaris StoreCard. Call 1-888-367-4310 or review your cardholder agreement for information. Model shown MSRP \$8,599, freight \$175. Free Garmin GPS with any new purchase of select full-size Polaris ATVs and consists of GPSMAP 76 model. See your participating Polaris dealer for all program details. **WARNING:** ATVs can be hazardous to operate. For your safety, always wear a helmet, eye protection, and protective clothing and never carry passengers. Polaris adult models are for riders 18 and older. Polaris youth models of 80cc for riders 12 and older. Polaris youth models of 40cc for riders 6 and older. Be sure to take a safety training course. For safety and training information see your Polaris dealer or call 1-800-342-3764. www.polarisindustries.com ©2004 Polaris Sales Inc.

HAPPY BIRTHDAY,  
Rohl. Gotcha!

For FAST results...  
try the  
Classifieds!

Read all about it  
in the Avalanche!



*Read all about it*  
**in the Avalanche!**



## City rec offers winter programs

Several winter programs are being offered by the Homedale Parks and Recreation Department including yoga, computers and Valentine Card art.

Currently gentle yoga classes are being held at the Owyhee County Armory on Monday and Wednesday nights. The classes are from 7 to 8 p.m. and cost \$16 for eight classes or \$3 per class.

Shree Sundarensan teaches the class which included separate classes for adults and seniors. Children eight and above are welcome but with parental supervision.

“In doing Yoga asana the purpose is almost always to cultivate a combination of concentration, will power, selflessness and ease,” Sundarensan said. “If a river is constantly changing, so is a Yoga pose. We become stiff and old because the backbone loses its flexibility. Yoga makes the back bend forward and backward and brings in a youthful flexibility.”

A computer course will begin on Jan. 18 at the Homedale Middle School computer lab. Basic computer skills, word processing, spread sheet, power point and Internet will be taught in the eight-session class. The classes will be held on Tuesdays and Thursdays from 6:15 p.m. until 7:45 p.m.

The eight classes will cost \$50 and children, food or drinks will not be allowed.

On Feb. 5 a Valentine art class will be held at the Homedale Presbyterian Church at 10 a.m. The class is open to children or adults who want to make a Valentines cards. Materials will be provided and the class will cost 50 cents per person.

To register and pay fees, contact Homedale City Hall or call 337-3302.



### Late winter

Although only approximately two feet of snow covers the ridges in the Owyhees, snowmobilers were plentiful Sunday. Deputy George Reed checked 20 machines before noon at the Cow Creek unloading area.

The Owyhee Avalanche  
P.O. BOX 97 • HOMEDALE, ID 83628  
PHONE 208 / 337-4681 • FAX 208 / 337-4867  
E-mail  
owyheeavalanche@cableone.net  
U.S.P.S. NO. 416-340  
Copyright 2005— ISSN #8750-6823

JOE E. AMAN,  
editor and publisher  
CHERYL BEESON, reporter  
JENNIFER STUTHEIT,  
office  
ROBERT AMAN,  
composition

Published each week in Homedale, Idaho by Owyhee Avalanche, Inc. Entered as Periodical, paid at the Post Office at Homedale, ID under the Act of March 3, 1879. POSTMASTER: send address changes to THE OWYHEE AVALANCHE, P.O. 97, Homedale, ID 83628.

**Subscription Rates:**  
Owyhee County..... \$31.80  
Canyon, Ada, Malheur  
counties ..... 37.10  
Elsewhere.....40.00  
(Price includes sales tax where applicable)

**Deadlines**  
**Display advertising**  
Friday noon the week prior to publication  
**Inserts**  
Friday noon the week prior to publication  
**Classifieds**  
Monday noon the week of publication  
**Legal notices**  
Friday noon the week prior to publication  
**Letters to the editor**  
Friday noon the week prior to publication  
(Limit 300 words, signed, with day phone number.)



January

Tires

LES SCHWAB

BARGAIN DAYS

Special Bargains on Odds and Ends, Special Purchases, One of a Kinds, Close Outs and More

ALPHA 365

On Sale

• 5 RIB ALL SEASON TREAD  
• MULTI-SIPED TREAD DESIGN FOR BETTER TRACTION

SIZE	SALE PRICE	SIZE	SALE PRICE
P155/80R-13	35.58	P225/75R-15	52.35
P165/80R-13	38.05	P235/75R-15	53.49
P175/80R-13	38.52	P185/70SR-14	45.38
P185/80R-13	40.76	P195/70SR-14	48.75
P185/75R-14	42.13	P205/70SR-14	51.77
P195/75R-14	43.32	P215/70SR-14	54.32
P205/75R-14	45.02	P205/70SR-15	52.90
P215/75R-14	48.87	P215/70SR-15	55.79
P205/75R-15	47.66	P225/70SR-15	55.01
P215/75R-15	49.39		

WILDCAT ALL SEASON

On Sale

• GREAT YEAR-ROUND PERFORMANCE  
• SMOOTH RIDING  
• OUTLINED WHITE LETTERS

SIZE & LOAD RANGE	SALE PRICE	SIZE & LOAD RANGE	SALE PRICE
P195/75SR-14	B 60.19	LT215/85R-16B/W	E 99.32
P205/75SR-14	B 61.33	LT235/85R-16B/W	E 101.56
P205/75SR-15	B 66.87	LT235/85R-16	E 106.77
P215/75SR-15	B 69.29	LT255/85R-16	D 114.57
P225/75SR-15	B 71.94	27/8.50R-14	C 73.75
P235/75SR-15	B 72.76	30/9.50R-15	C 87.25
LT195/75R-14	C 70.91	31/10.50R-15	C 97.26
LT215/75R-15	C 83.28	31/11.50R-15	C 103.18
LT235/75R-15	C 88.71	32/11.50R-15	C 106.71
LT225/75R-16B/W	D 95.32	33/12.50R-15	C 109.39
LT225/75R-16B/W	E 99.32	33/12.50R-16.5	D 123.13
LT245/75R-16B/W	E 106.29	8.75R-16.5B/W	D 92.61
LT265/75R-16	C 106.04	9.50R-16.5B/W	D 104.00
LT215/85R-16B/W	D 95.37		PLUS FET

The Wildcat All Season features the latest in white letter styling, and provides quality year-round performance.

FREE MOUNTING • ROTATIONS  
ROAD HAZARD  
FLAT REPAIR • AIR CHECKS

On Sale

SPECIAL PURCHASE

We've made a Special Purchase  
On over 300,000 pickup and passenger car tires  
and we're passing the savings on to you

SIZE	SUPERMARKET PRICE	SIZE	SUPERMARKET PRICE
165/80R-13BW	26.73	P225/70TR-16BW	69.99
P205/75SR-15	63.03	P225/70SR-16BW	69.99
P225/75SR-15BW	39.99	P245/70HR-16BW	69.99
P225/75TR-15BW	69.99	P255/70SR-16	73.60
P235/75SR-15BW	69.99	P265/70SR-17BW	109.85
P265/75R-15	79.99	P255/65TR-16BW	94.99
P225/75HR-16BW	84.99	P265/65SR-17BW	99.99
P245/75SR-16BW	79.99	255/60HR-17BW	94.99
P195/70SR-14BW	41.99	P225/55VR-17BW	99.95
P225/70SR-15BW	44.99	P225/55HR-17BW	109.99
P255/70TR-15	69.99		

• Tread designs may vary from photo.  
• Ask about additional sizes.

On Sale

ROCKCRUSHER

ALLIED 887

STARTING AT:

125<sup>16</sup><sub>17x7</sub>

Lugs Extra

STARTING AT:

106<sup>31</sup><sub>15x8</sub>

Lugs Extra

ENDING MONTHLY BALANCE MINIMUM PAYMENT

\$0.01 - \$10.00.....BALANCE

\$10.01 - \$50.00.....\$10.00

\$50.01 - \$100.00.....\$15.00

\$100.01 - \$250.00.....\$25.00

\$250.01 - \$500.00.....\$50.00

\$500.01 - \$1,500.00.....\$75.00

\$1,500.01 - \$2,500.00.....\$150.00

OVER \$2,500.00.....1/3 OF BALANCE

Ask store for details.

Payment programs on approved credit.

Monthly percentage rate of 1.5%

18% per annum.

CREDIT

THE LES SCHWAB WAY

MasterCard

VISA

90 DAYS

SAME AS CASH

O.A.C.

AMERICAN EXPRESS

DISCOVER

NOVUS

LES SCHWAB TIRE CENTER • HOMEDALE 337-3474 • MARSING 896-5824



From  
page  
1

✓ **Lisonbee**

time for him to take the next step in his life.

“I will miss education, the students and all the people I’ve worked with, and I am sure I will go through symptoms of withdrawal for some time to come after I actually leave,” Lisonbee said. “There are more goals and dreams that my wife Judy and I have set out before us so hopefully I can make this transition as painlessly as possible.”

Lisonbee still had a year and a half on his contract.

✓ **Farmer**

increase the field grazing capacity, planting a hardy variety of alfalfa and gain more productive years with each planting, which reduces how much they open their ground over the years.

This reduces costs in their operation, as well as improving water quality because it is considered minimum till. Despite their short water year, they produce four to four and a half tons/acre of hay.

They have three diversion dams and use ecology blocks to stabilize their diversion ditches and dams. They cut willow whips and push into moist soil to stabilize stream banks.

They perform water quality monitoring and volunteer to both pay for this and provide the information to the TMDL team. Connie was a member of the TMDL working group.

“All land leveling they have done was designed to fulfill the Brandau motto of ‘really wearing out your water,’” Mansisor said. “Whenever possible, waste and tail ditch water is redirected to fields and pastures. They operated their own heavy equipment to make repairs after the 1999 flood that took out one of their diversion dams, making design improvements as they went.”

They have crossed fenced all three properties, which enables them to move cattle across to graze without over-grazing or trampling the fields down.

They spread manure from their own corrals sparingly to increase nutrient without burning the plants. Rotational grazing also naturally increases field nutrient.

The Brandau’s future is directly tied to Hardtrigger Creek and the 25,000 acres of public land surrounding it. They reared two children at their home, part of a 1,280-acre ranch that has been in Richard’s family since 1903. They have lived the history of the environment.

# County's weed supervisor questioned on contract conflicts

## Sibert awarded Air Force contract

Owyhee County Commissioners questioned the county’s weed supervisor during a commissioner’s meeting recently after a Bruneau resident raised questions concerning conflict of interest. Bruce Sibert, who works part time for the county as the weed supervisor. But he also has a private weed spraying business.

Tammie and Don Hedges also own a spraying business in the Bruneau area, New Environment LLC. The couple has raised questions to the commissioners about a conflict of interest because Sibert has been awarded a weed control contract with the Mountain Home Air Force Base.

Tammie said she sent a letter to the commissioners and asked several questions. She said she had to send an additional letter because after many weeks, she did not get a response. On Dec. 27 the commissioners addressed the Hedges’ concerns.

“The board has reviewed the questions raised in your letters concerning operation of the county weed office and supervisor,” the letter read. “We have reviewed Mr. Sibert’s records and invoices and have found that no county time, supplies or equipment has been used in private weed operations. In order to avoid even a perception of conflict of interest, we have instructed Mr. Sibert to report to the board any proposed contract for spraying, which is to be negotiated with the Air Force or any other government agency such as the BLM by any private service with which he is connected.”

The Hedges asked the commissioners, who pays for the supervisor’s Idaho State Pesticide license, recertification classes and insurance. They requested to know who is in charge of buying, maintaining and keeping records and where the chemicals are stored. They also asked commissioners who pays for sprays used on the property of private individuals?

County Commissioner Chris Salove said the county requested Sibert produce documentation to prove he is not using county property or time for his private business and Salove said Sibert proved to the commissioners that he is indeed working his personal on his own time.

The county did instruct Sibert to advise the board in advance of any private work he intends to perform or participate in for the Air Force, the BLM and any other government entity. Sibert was also instructed to schedule at least quarterly meetings with the board to report on the status of the Assistance Agreement between the County and the BLM and other matters relating to weed control activities.

Salove said he was not sure if the county paid for Sibert’s pesticide license, but assumed the county does pay for it since they cannot hire someone who does not have a license. He said how Sibert breaks down the license, he did not know. Salove said Sibert is not supposed to store any

chemicals or equipment owned by the county at his home and to Salove’s knowledge, Sibert does not.

“It is one of those situations where people are going to make allegations because of the appearance, but I don’t know how we prove it to them without walking all over his rights as an individual,” Salove explained. “I would love to see the perception disappear too. Perception is not a good thing. The perception that there is a conflict is not a good thing. It concerns me that he has contracts privately and as a county employee with the same government agencies. The question for us is how are we going to find someone who is going to be the weed supervisor and do spraying and not be involved in it privately?”

Commission Chairman Hal Tolmie said he Sibert has only

bid on an Air Force contract one time, but he has done some jobs for the BLM. He said the county has billed some of the jobs Sibert has done for BLM, but Sibert bills BLM and the county receives the funds.

Cheryle Zwang, External Affairs Manager for the Bureau of Land Management state office said last week that only one weed-spraying contract has been given to Sibert and no contracts have been awarded to the county.

“If the BLM comes up with certain spray jobs the county does not want to be involved in, he does that through his personal account,” Tolmie explained. “I don’t think he bids on a BLM job, they just call and tell him to do it.”

Sibert did not return a phone call for comment.

# County 4-H leader meeting date changed

An Owyhee County 4-H Leader meeting has been changed from January 20 to Jan. 24. All Owyhee County 4-H leaders, parents and teens are invited and encouraged to attend from 7 to 9 p.m. at the Owyhee County Extension Office in Marsing.

The agenda will include information and discussion on the 2005 4-H record books, Involvement Reports, four HCCS project books, and portfolios. You will also be able to pick up club and member enrollment information, as well as Volunteer Leader Position Descriptions, screening information and enrollment forms.

In addition, we will have training on Ages and Stages of Youth and how to incorporate that information into your 4-H club and project activities.



**Do YOU FEEL** frustrated by deeply partisan politics or the influence of special interests?

**Do YOU BELIEVE** that good ideas and good people come from more than one party?

**Do YOU HAVE** one hour to study an issue and offer an informed opinion?

Then join with other Republicans, Democrats, and Independents to ensure that Idaho is governed **BY THE PEOPLE.**

**THE COMMON INTEREST**  
is a non-partisan, non-profit, grassroots organization that offers Idahoans an opportunity to make a difference in one hour.

How It Works | Why It Works | Who We Are  
[TheCommonInterest.org](http://TheCommonInterest.org)

Our opportunity exists while the state legislature is in session. It convenes on January 10.

**Go to THECOMMONINTEREST.ORG to JOIN NOW.**

No membership dues required.

Paid for by [TheCommonInterest.org](http://TheCommonInterest.org)  
PO Box 1964  
Eagle, Idaho 83616  
e-mail: [info@TheCommonInterest.org](mailto:info@TheCommonInterest.org)



# Obituary

# David Aberasturi

David Aberasturi passed away Friday, December 31, 2004 after a brief battle with terminal cancer. Funeral services were conducted at St. Hubert's Catholic Church in Homedale on Thursday, January 6, 2005 at 10:30 A.M. Prior to the service, a viewing was available at Flahiff Funeral Chapel, 27 East Owyhee, Homedale from 9:00 AM to 10:15 AM. Interment was at Victor Cemetery, Victor, Montana.

David was born in Boise, Idaho on August 1, 1937 to Raymond and Ramona Aberasturi. He was raised on a farm west of Homedale where he developed his life long passion for farming and ranching.

While attending High School in Homedale he met and fell in love with Louise Upham. They were married in January 1956 and over the next several years they were blessed with five sons. Dave continued farming and passed his work ethic down to his sons. He moved his family several times pursuing farming and ranching positions in Idaho.

In 1980 personal problems led to a divorce and he roamed the western states until finally finding a foreman position with Snow Crest Ranch in Montana. While there he found peace with himself. It was also there he found a feisty little cook named Margie who won his heart. They were married in 1985 and together they explored several ranching

opportunities in Montana and California.

Dave retired from farming and moved several times to be closer to family. Most recently he lived in Ely, Nevada until the death of his beloved Margie in October of 2004.

Farming and ranching defined his life, but to those who loved him he was much more. He was a devoted husband, father, grandfather and friend who will be greatly missed. His last few months he was surrounded by loved ones who cared for him and enjoyed his wry humor in the face of his illness.

Dave is survived by his siblings Jack, Rayme and Manuel, his sons Anthony, Kelly, Richard, Mitchell, Julian and their families along with numerous grandchildren. He was preceded in death by his wife Margie, father Raymond, mother Ramona, daughter-in-law Deonna and nephew Raymond.

In lieu of flowers the family requests donations be made to the Salvation Army.

The family also wants to thank Life's Door Hospice for the care they gave our dad and the wonderful support they offered the family.

# Historic plots still available in early day cemetery

Marsing-Homedale Cemetery manager Don Osterhoudt said last week that burial plots at the historic Pioneer Cemetery are still available to people if they would like to lay a loved one to rest in an early day atmosphere.

The cemetery is located near Givens Hot Springs and currently contains two sections of plots. The original section of the cemetery has been partitioned off to preserve the original plots, but Osterhoudt said about two hundred additional plots are available.

Osterhoudt said the cemetery is part of the Marsing-Homedale Cemetery District, but the district does not maintain the grounds. He said that if people want to purchase a plot they would need to remember that it is a pioneer cemetery and is not landscaped.

Plots can be purchased from the district.



## New legion

*A rendition of a new American Legion sits in the old American Legion hall in Homedale. The legion has planned several fundraisers over the next year to help raise funds for the new building, which is expected to be located near the Senior Citizen's Center. Legion coordinators said they hope to begin construction on the project in the next two years.*

# Hunter education classes begin

Hunter safety education classes are beginning for the 2005 year and will begin in January, February and March. Each series of classes will begin at 6 p.m.

Young hunters 11 years old and up are required to take the class before purchasing a hunting license. Hunters born after Jan. 1, 1975 are required to complete the course.

Walt and Glenda Rost, certified instructors, will hold classes on Jan. 18, 20, 25 and 27 from 6 to 8:30 p.m. and on Jan. 22 from 9 a.m. until about 2 p.m. at the Nazarene Church of Homedale on Ustick Road. The completion class will be held on Jan. 29 at 9 a.m. at the Homedale Rod and Gun Club range.

For more information contact Rost at 989-3152 or Glenda at 880-5431 or at 337-3535 to leave a message.

A second series of classes will be held in Homedale instructed by Paddy Doyle. Doyle will hold a series of classes at the Owyhee County Armory on Jan. 18, Feb. 17 and March 14. Sign-up sheets are available at Matteson's in Homedale or for information contact Doyle at 337-5331.

# Three Creek

*By Lola Blossom*

2005 rolls in and finds Three  
Creek with out any snow.

Bert and Paula Brackett hosted a New Years Eve party. They had a fun time and played some poker.

The Three Creek school program, potluck supper and silent auction was a gala affair.

Ira and Kim J. Brackett and Cade and Zane spent the Christmas holidays in Evanston, Wyoming with Kim's family, the Burtons.

J. R. and Kelsie Robinson and Tessa and Gretta spent a week with Kelsie's family at Meeker, Colorado. On Monday J. R. was pallbearer for his aunt Carol Robinson's funeral at Richfield, Idaho.

2004 saw quite a few changes in the country. The good cattle prices seem to make several new steel roofs appear on buildings on several ranches. Devil Creek ranch has new corrals and a new Modular home on the south side of the road for hired hands.

Fred Wright Construction Company of Twin Falls put up a new building at the road yard. It is used to house the snow removal truck.

Earlier in the year Bracketts ranches (Bert and Paula) sold multiple parcels of land north west of Wells, Nevada in the O'Neil Basin to Joe Durrant and Janelle E. Durrant for the sum of \$3 million 2 dollars. Bracketts then bought all the holdings of the Aslett family that lies in Owyhee County and Aslett's permit on the Humboldt forest. Bracketts also bought the historic old Conover ranch at Roseworth, Idaho from Ken Tverdy.

Bob and Nell Taylor bought the home of Frances Nye at Murphy's Hot Springs.

Chandler Chapin of Diamond A Ranch who attends high school at Filer, Idaho is on the National Honor Roll.

Virgil Dodd of Murphy's Hot Springs and Mona Timpson of Twin Falls were married just recently.



*"Serving Owyhee & Canyon Counties Since 1952"*



**HOMEDALE**

**27 E. Owyhee • 337-3252**

**CALDWELL**

**624 Cleveland Blvd. • 459-0833**



*"Locally Owned"*



**ACCESSIBLE**  
Everything On One Level



**River Haven R.V. Park**  
Quiet Country Atmosphere

2 Miles South of Marsing  
6920 Old Bruneau Highway • Marsing Idaho, 83639

- Fishing in the Snake River
- Full Hook-Ups
- Spaces Available
- Picnic/Park Area
- Daily/Weekly/Monthly Rates
- Small Pets on Leashes Allowed

**Open to Public:**  
**Full Line Laundromat (75¢ load)**  
**Propane (\$1.75 gal)**  
**Call: 896-4268**





First week winners

First week International Smorgasbord ticket sales winners included Caitlynn Johnson, Taylor Thomas, Marissa Ensley and Summer Phelps. Thomas sold \$59, Johnson, \$27, Ensley, \$224 and Phelps sold \$90. The students are pictured with smorgasbord chairpersons Tim and Nikki Quintana and co-chairman Robin Tolmie. Each winner received a large candy bar, a mini pizza, one land of bowling and a buy one get one free certificate for a movie.

Us Ecology foundation announces community grants

\$20,000 Donated to Senior Centers, Schools, Organizations in Owyhee County

Steve Romano, Chief Executive Officer of American Ecology Corporation and President of Owyhee County subsidiary US Ecology Idaho, Inc., today announced that the Company’s Owyhee Charitable Foundation is contributing a total of \$20,000 to twelve projects proposed by senior centers, schools, libraries, and other organizations in Owyhee County. This reflects an increase of \$5,000 over the amount distributed by the Company last year. US Ecology Idaho owns and operates the hazardous waste management facility west of Grand View and is one of Owyhee County’s largest businesses with 51 full time employees.

“US Ecology Idaho is proud to call Owyhee County home, and we’re pleased to fund these very worthwhile community projects,” Romano said, concluding “We received a large number of exceptional proposals this year and thank every organization that participated.”

US Ecology’s 2005 grant awards were given to Rimrock Senior Center for a matching grant for a new Meals on Wheels bus, Rimrock Jr-Sr High School for potable drinking water, electronic soil testing kits for science classes, and for water monitoring kit for science classes, Owyhee County Historical Society for a septic system for the new museum building, Homedale Senior Center for new dishwasher, Owyhee County Probation Department for educational books for after-school program, Marsing High School for LCD computer projector, Home-

dale High School for greenhouse for agriculture classes and FFA, Eastern Owyhee County Library for printers for community use and internet computer service for community use and the Marsing Resource Center for computers for community use.

Since 1988, the Owyhee County Charitable Foundation has funded over 100 community projects including computers for Owyhee County schools, assistance to county Senior Citizen Centers, veteran organizations, libraries and the historical museum in Murphy. A three-member selection committee made up of Roy Herman of Marsing, Ray Meyers of Grand View, and Romano determines annual grants. The Foundation encourages organizations that were not funded this year to submit a request next fall for the 2006 funding cycle.

“For the past sixteen years, companies operating the hazardous waste facility near Grand View have administered a charitable trust,” said Roy Herman, Marsing resident and long-time member of the Owyhee Charitable Trust Selection Committee. “US Ecology has continued this fine tradition with generous local community improvement grants. I am also very impressed with the environmentally protective, professional way that their hazardous waste facility is operated and consider US Ecology a valued member of the Owyhee County community.”

“I’m very pleased that US Ecology Idaho has been able to increase funding levels for 2005,” added Ray Meyers, a Grand View farmer and member of the Selection Committee, concluding, “These donations make a real difference in our community.”

Parent company American Ecology Corporation, based in Boise, Idaho, provides radioactive, PCB, hazardous and non-hazardous waste services to commercial and government customers throughout the United States, such as nuclear power plants, steel mills, medical and academic institutions, oil refineries and chemical manufacturing facilities. American Ecology is the oldest radioactive and hazardous waste services Company in the United States.

Buy it, sell it, trade it, rent it... in the Classifieds!

Landowners can bid on program for Access Yes!

Idaho landowners who want to take part in Fish and Game’s Access Yes! program have until Feb. 28 to bid for 2005.

Funding is still quite limited for this new access program with allocations going nearly equally to the seven regions. Landowners deal with regional Fish and Game offices in this program. Local sportsman committees decide which lands will be enrolled.

Access Yes! began operations in 2003 using funding from other Fish and Game programs.

Access Yes! is intended to increase hunting and fishing access to private lands and to public lands that would otherwise not be accessible through private lands. It compensates willing landowners who provide access to private land or through their property to public land. In 2004, Access Yes! accounted for access to 222,000 acres of private land and access through private land to more than 250,000 acres of public land.

Fish and Game spent \$275,000 on the program in 2004 with \$300,000 budgeted for the program in 2005.

Expanding Access Yes! to provide more hunting and fishing access on private and public land will require additional funding. About \$1.2 million is needed to provide Idaho hunters and anglers access comparable to access programs in other western states.

The Idaho legislature in its coming session may consider a Fish and Game license fee increase including funds dedicated to expanding the access program. In 2004, a lottery system with premium big game tags as the prizes helped fund the program.

**WE CAN HANDLE ALL YOUR HEATING & COOLING NEEDS!**  
**RESIDENTIAL OR COMMERCIAL ALL TYPES OF FURNACES: OIL - GAS - ELECTRIC - HI TECH**  
Heat Pumps • Air Conditioners • Boilers • Humidifiers  
Water Heaters • Fireplaces (Wood or Gas)  
Air Cleaners • Central Vacuum • Sheetmetal  
**SPECIALIZING IN OIL FURNACES**  
**BAUER HEATING & COOLING**  
Residential Commercial  
Greg Kelly  
**Homedale • 337-5812**  
**573-1788 • 573-1886** Ben & Lori Badiola / Owners  
**24 HOUR Emergency Service**  
**bryant**  
Manufactured & Certified Appliances

**PSC Producers Supply**  
**PRODUCERS SUPPLY CO-OP LAND O LAKES FEED & SWEETLIX MINERAL**  
2114 N. 20th St. Nampa, Idaho 83686  
(Behind Campbell Tractor)  
**466-7841**  
**LIVESTOCK FEED & SUPPLIES**  
LAND O LAKES 3-WAY.....\$6.65  
SCRATCH GRAINS.....\$6.55  
LAND O LAKES 20-20 N/M MILK REPLACER.....\$41.95  
CAPRINE GOAT MINERAL.....\$9.75  
16-8 MEATMAKER GOAT MINERAL.....\$8.80  
16-8 MEATMAKER W/RUM GOAT MIN.....\$10.65  
SWEETLIX 24% 200LB PROTEIN TUB.....\$36.90  
LAND O LAKES 15% ALLSTOCK 125# TUB.....\$36.75  
TRACE MINERAL SALT BLK.....\$4.05  
TRACE MINERAL SEL. BLK.....\$5.18  
IODIZED BLK.....\$3.60  
PLAIN SALT BLK.....\$3.29  
**DELIVERY IS AVAILABLE, FOR ALL YOUR LIVESTOCK NEEDS PLEASE CALL:**  
**OFFICE-208-466-7841 • DAVID-208-880-8835**  
**www.producerssupply.com**



# Winter storm calmer than expected

Snow blanketed much of the valley last week, but the brunt of the storm expected to hit the area, traveled south and missed most of Southwestern Idaho.

Snow reports from the Natural Resources Conservation Service showed that South Mountain began the week with 19 inches of snow, but a storm expected on Friday which was to last through the weekend, did not make it into southwestern Idaho as expected. South Mountain did receive nearly six inches but was expected to receive up to a foot of new powder.

Reynolds Creek received two inches of new snow for the week and Mud Flat gained just over four inches of the powder.

The storm, which dropped much needed snow in the central mountains of Idaho dumped 27 inches of new powder in Sun Valley and nearly a foot of snow at Brundage near McCall. Several highways were closed Saturday evening including U.S. Highway 20 from Idaho Falls to Arco, Idaho 32 from Ashton to Tetonina, Idaho 33 from Howe to Rexburg, Idaho 47 from Ashton to Bear Gulch, Idaho 22 from Idaho 33 to Dubois and Idaho 21 from Grandjean to Banner Summit. Most had been reopened except Idaho 21 Lowman to Banner Summit remained closed on Monday.

The National Weather Service is calling for cold temperatures again this week. Wednesday is expected to be mostly cloudy with highs 28 to 33 degrees and a 20 percent chance of snow. Wednesday night is expected to be cold with lows 11 to 18 degrees.

Thursday night and Friday are expected to be partly cloudy with highs 16 to 22 and lows five to 10 degrees. Friday night and Saturday are expected to be 19 to 24 degrees for a high and one to eight degrees for the low.

Saturday night should be mostly clear and not as cold with lows 11 to 18 degrees and Sunday is expected to be mostly sunny with highs climbing to 31 to 37 degrees.

The following is a water and snow report from the Natural Resources Conservation Service as of Jan. 3. The Owyhee Reservoir held 158,097 acre-feet of water and was 22 percent of full. One hundred ninety cubic feet per second of water was recorded as the daily inflow and nine CFS was recorded as the outflow. Snow pack and water equivalent is as follows:

Site Name	Date	Change In Snow Water Equivalent	Snow Depth
Reynolds Creek	01/03	0.4	2.7
	01/04	0.4	2.4
	01/05	0.4	2.2
	01/06	0.4	2.6
	01/07	0.5	2.7
	01/08	0.8	5.0
	01/09	0.9	4.9
	01/10	0.9	4.8
South Mtn.	01/03	5.5	19.2
	01/04	5.5	18.3
	01/05	5.5	17.8
	01/06	5.5	18.9
	01/07	5.7	19.6
	01/08	6.6	23.5
	01/09	6.9	25.4
	01/10	7.0	24.9
Mud Flat	01/03	1.9	5.4
	01/04	1.9	4.7
	01/05	1.9	4.7
	01/06	1.9	5.7
	01/07	2.0	5.4
	01/08	2.2	6.5
	01/09	2.4	9.2
	01/10	2.5	9.8



**Come in and see your local boy...**  
**JEFF CHRISTOFFERSEN**  
For all your special building needs!  
- Pole barns - remodels - cabinets - etc. -

4523 E. Cleveland • Caldwell • 454-8626 • cell 941-5563



## Dinner theater

Shane Smith, Emil Scown, and Jessica Davis giving it their all on center stage at Jordan Valley High School.

## Jordan Valley dinner theater deemed a success

by Hayley Johnson

Last Wednesday, the community of Jordan Valley was treated to an evening of entertainment and amusement at the first dinner theater held by the Jordan Valley High School drama class. A dinner of prime rib was followed by a comedic who done it play, performed by members of the drama class.


The play was a murder mystery entitled "Next Victim Please." Dr.

Sessions, Dinah Powers, Mary Beth Dowell, Shane Smith, Kristen Grenke, Levi Waller, Jenny Crouch, Nick Eiguren, JJ Echave, Hayley Johnson, Jessica Davis, T.J. Stubbs and Emil Scown played characters.

In between scenes, different forms of entertainment were given on a back stage. These included an insightful quote, given by Cassia Trautmann, a mini reader's theater skit given

by Catie and Bryce Kershner, a monologue performed by Emil Scown and a poem delivered by Hayley Johnson.


Although Jordan Valley has had drama in the past, it hadn't been offered the past few years. After a slow start, they managed to kick off with the performance of this play. According to Tara Echave, who organized and directed the students, this will not be the last performance for the year.




Se Habla Espanol

# TERRY REILLY HEALTH SERVICES


**IS PROUD TO ANNOUNCE EXPANDED HOURS AND  
SERVICES AT THE MARSING AND HOMEDALE CLINICS**




Faith Peterson  
M.S., F.N.P.



Janine Franco  
P.A.



Chip Roser  
M.D.



Dick Ernest  
F.N.P.

## Homedale And Marsing Clinics Provide Complete Family Care.

Prenatal Care & Deliveries – Minor Emergencies – Laboratory Services  
Immunizations–School Physicals–Diabetes & Hypertension Management–  
DOT Physicals

Walk-Ins And Appointments Welcome.  
We Accept Medicare, Medicaid, Private Insurance, And Uninsured.  
Discounted Fees Available Based On Family Size And Income.

### MARSING CLINIC

201 Main Street  
Marsing, ID 83639  
Phone: 896-4159  
**HOURS**  
Mon, Tues, Wed, Fri.  
8:00 AM-Noon / 1:00-5:00 PM  
Thur. 8:00 AM-Noon/1:00-8:00 PM  
Chip Roser, M.D.  
Faith Peterson, MS, FNP  
Janine Franco PA

### HOMEDALE CLINIC

108 E. Idaho  
Homedale, ID 83628  
Phone: 337-3189  
**HOURS**  
Mon, Wed, Thur, Fri.  
8:30 AM-5:00 PM  
Tue. 8:30 AM-9:00 PM  
Chip Roser, M.D.  
Dick Ernest, FNP  
Janine Franco, PA





On the move

Alisha Marks dribbles past a McCall opponent. The junior varsity girls won their game at McCall. Photo by Gregg Garrett.



Shoot

Varsity player Cheyanne Andrade shoots over a McCall defensive player. The Homedale girls beat McCall on the road, 36-29. Photo by Gregg Garrett.



Drive

Freshman Joey Cline drives around a Middleton player in boy's basketball last week. Photo by Gregg Garrett.

The cost of keeping a bull trout

by Evin Oneal

Bull trout are a threatened and protected species in Idaho and killing one can cost you, as one Boise man found out recently. Jordan Pugh, of Boise, must now pay more than \$1,400 in fines and costs after pleading guilty to unlawfully taking one of the protected fish from Arrowrock

Youth wrestling signups to be held next week

Local kids who have or want to wrestle in freestyle and Greco-Roman style can sign up during the first practice on Jan. 19 in Marsing.

Youth wrestling is for kids ages six to 17 years of age and will be held during the first practice on Wednesday at 6 p.m. at the Marsing High School student lounge. Wrestlers must purchase a USA wrestling card for \$35 to be eligible.

For more information contact Ken Wilson at 880-1099.

Weather

	H	L	Prec.
Jan 4	36	14	
Jan 5	33	10	
Jan 6	29	9	
Jan 7	30	18	trace
Jan 8	no	read	
Jan 9	no	read	
Jan 10	52	16	

Reservoir and failing to produce the fish upon request of a Fish and Game conservation officer.

Bull Trout have been closed to harvest since 1994, and listed as threatened under the Endangered Species Act since 1996. This Idaho native fish is easily identified by the salmon colored spots on its sides and lack of spots on the dorsal (top) fin. Anglers landing a bull trout should immediately release it back into the water.

Pugh caught and kept the bull trout on December 11th while fishing Arrowrock Reservoir. Another angler reported the violation to the Citizen's Against Poaching hotline. When contacted by a conservation officer, Pugh failed to produce the fish and lied about having it.

In Idaho City, Boise County Magistrate Roger Cockerille sentenced Pugh to pay \$1,472 in fines and court costs, suspending another \$1,000. Pugh was also sentenced to 180 days of jail on each of the two charges, suspending all but three days. In lieu of the jail time, Pugh must provide 60 hours of community service. He also received a one-year fishing license suspension.

People who witness or have information about fish or wildlife violations are encouraged to call the Citizen's Against Poaching (CAP) hotline at 1-800-632-5999. Callers can remain anonymous and rewards are available.

Husky'ettes take on Wolverines in double-header

Marsing's sixth grade Huskies traveled to Weiser for a double-header girl's basketball game last week and brought home a double victory for their first games of the season.

The Husky'ettes beat Weiser 31-10 jumping to a steady lead. Strong rebounding and shots by Rebecca Cossel lead the Huskies with eight points, followed by Andi Merritt with six points, and Candi Leon with five points.

Marsing finished up the winning day by taking on the Adrian Antelopes. Marsing blew past Adrian's defense and did not look back for a 48 - 8 victory. The Huskies worked as a team and scored steady.

Leon sunk 10 of 20 points in the first quarter. Tinisha Garza hustled to add nine points, Cossel points, Leon another four, Andi Merritt four, Michelle Horner four, and Kate Blackstock four points. Marsing's defense lead to many turnovers and all the girls contributed to the team's score.

Lions to hold football and cheerleader board meeting

The first 2005 football and cheerleader board meeting for the Marsing Lions Optimist football season will be held Jan. 21 at 7 p.m. at the Coldwell Banker office in Marsing. Those interested are invited to attend.

For more information contact Ken Wilson at 880-1099.



Down court

Marsing Husky Elisa Moreno travels down court during a girl's junior varsity basketball game Thursday night against the Nampa Christian Trojans. Marsing lost 36-42 but further results were not made available. Photo by Jeremy Hall.



The Clinic at Wilder

215 3<sup>rd</sup> St. (Next to City Hall) • Wilder, ID 83676

Healthcare for your entire family

- Well Child Exams • Women's Health
- Sports Physicals • DOT Physicals & Drug Testing
- Adult physicals • Immunizations
- Minor Illness Care • Chronic Condition Care

ACCEPTING NEW PATIENTS

Call 482-7430 for appointment

Renee Kindler, FNP ♦ Kelly Pesnell, FNP





Offense

Breeana Chadez dribbles past a Nampa Christian player during a girl's basketball game last week. Photo by Jeremy Hall.

Huskies fall to Gem State, Nampa Christian and New Plymouth

The Marsing Lady Huskies played a tough week of girl's basketball as the Lady Huskies were beat by Gem State, Nampa Christian and New Plymouth. Against Gem State, Marsing lost a close 39-38 game on Tuesday evening.



Husky power

Marsing Husky MJ Usabel goes down-court for a two-point basket during a conference girl's basketball game last week. Photo by Jeremy Hall.

Breeana Chadez led the Huskies with 12 points followed by Tori Kent who added eight points and took 12 rebounds. MJ Usabel added 11 points and nine rebounds.

"We did not play well," Coach Don Heller commented. "Gem State is a very tall team and took advantage of us with rebounding."

On Thursday, the Huskies were defeated by Nampa Christian 51-45. Chadez led the team with 17 points and went 100 percent at the line scoring on seven of seven free throws. Angela Martinez added 12 points and eight rebounds and Usabel scored eight points and had nine rebounds.

"We played very well in the first half," Heller commented. "Down only three at half, we had missed five layins in the half. Third quarter we came out very slow and they jumped on us in the first five minutes. We were able to regroup and make a game of it in the end."

On Friday, the Huskies lost to New Plymouth 60-48. Usabel scored 18 points and recorded 13 rebounds and Chadez scored 10 points and took five rebounds.

"We played our best ball of the year," Heller commented. "Everything was working. We had the lead for three and a half quarters. Seven point lead going into the fourth. New Plymouth tied us up with four minutes to go. They went to a star with two minutes and a four-point lead. We then had an intentional foul and two missed rebounds on free throws to give them an 8-0 run."



Dribble

Jordan Valley Mustang Angela Larsen breaks away from a line of defenders during a recent girls basketball game. Jordan Valley won one game last week and lost a second.

Jordan Valley overpowers Wallowa Cougars

by Angela Larsen

The Jordan Valley Mustangs opened its season with a 54-34 win over the Wallowa Cougars but ended the week with a loss to Pine Eagle, 24-63.

The Lady Mustangs came out of the locker room ready to defeat Wallowa and that is what they did. In the first quarter, the Lady Mustangs held the Cougars to only two points. By half time, the Cougars had only scored six more points and ended the first half 23-8.

Lauren Cuvelier led the team in points with 18 and Angela Larsen followed with 16 points. Cuvelier and Larsen also loed in the team rebounding with seven rebounds each respectively. Bailey Kershner led the team in steals with six of 17.

"We didn't play that well, but we started off good enough to keep the game going for us," Mustang Michelle Elsner said.

On Thursday, the Mustangs traveled to Pine Eagle. The junior varsity girls had a final score of 31-30 and the varsity team finished with a 24-63 loss.

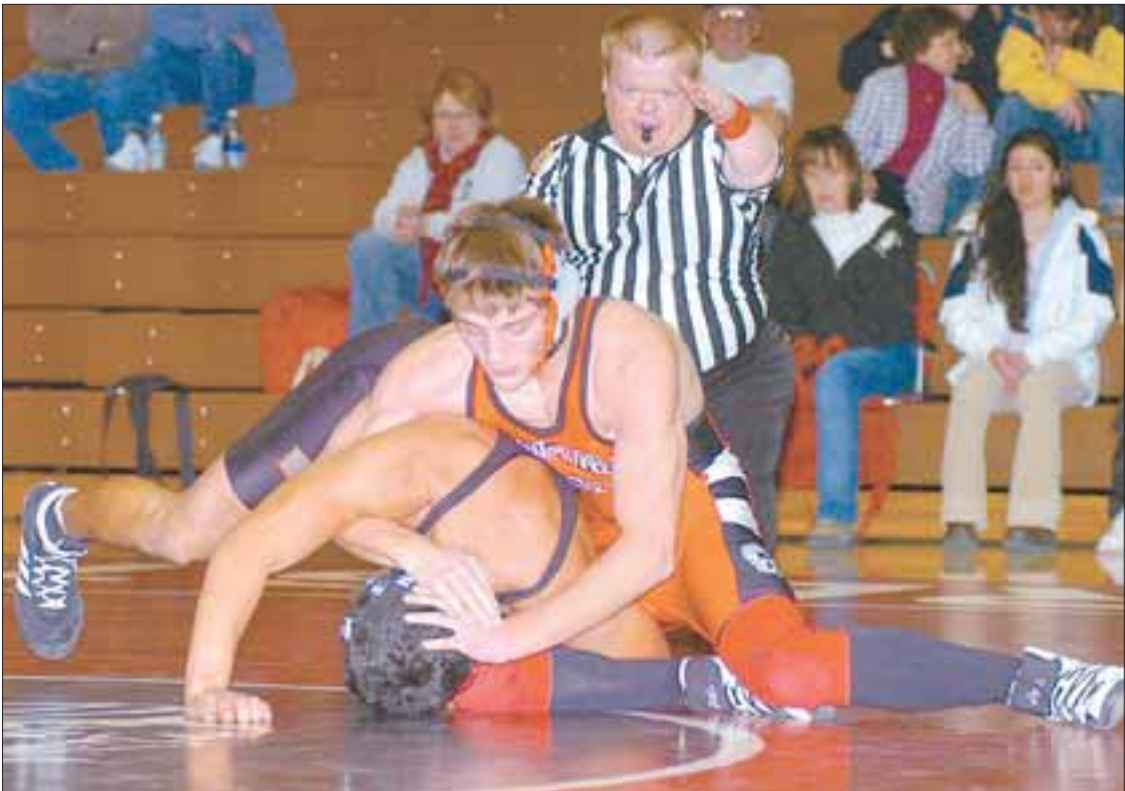
Breann Hipwell was injured and Cassia Trautman and Jessica Davis were not feeling well," parent Melinda Cuvelier commented. "However, the girls were not moving to their passes well either. Pine Eagle was very good defensively as well."



Going in for the shot

Jordan Valley Mustang Hayley Johnson goes in for a shot during a girl's basketball game last week.





Decision

Tyler Maxwell takes control Payette’s Alex Haro in the 160-pound weight class. Maxwell beat Haro 13-5 to help the Homedale Trojans to a dominating 51-15 team win over Payette. Photo by Gregg Garrett.

Trojans topple Payette 51-15 on the mats

Matmen place 13 in Rollie Lane Invite

Homedale had a winning week as they toppled the Payette Pirates 51-15 in a conference-wrestling match last week. The team ended the weed at the Rollie Lane Invitational in Nampa during the states largest wrestling tournament.

Homedale’s win over the Pirates was dominated by experience. Jeremy Ensley, 119, Brandian Sitko, 130, Tyler Christoffersen, 135 and Bryan Martinat, 140, led the team in pins.

Solid decision matches were won by Marcus Eby at 152 with a 16-7 win, Tyler Maxwell with

a 13-5 win at 160 pounds, Ricco Gonzalez with a 5-1 decision at 171 and Josh Jolley with a 13-3 win at 215 pounds.

“Stuart Miyasako had the toughest opponent of the night facing Abram Salcedo, second at state in 2004,” Johnson said. “Stuart wrestled very well and only lost 4-10 with two take-downs in the match. He did a good job as all my kids did.”

Forty-one teams from three states traveled to Nampa for the invitational and nearly every wrestling fan in the Homedale area were in the stands. Homedale coach Toby Johnson said most came to see the match of the season, Trojan Jeremy En-

sley versus Meridian’s Preston Gentry.

But the match did not happen after Gentry, Meridian’s 4A state tournament placer and No. 1 seed wrestler, pulled out claiming injury giving Ensley a bitter sweet default win.

Johnson said the meet is set up to give wrestlers a feel for what the state tournament will be like. He said teams from all divisions come and every weight class was loaded with talented wrestlers.

The tournament has two parts. “First you must win your pool by beating everyone in a group of wrestlers to advance into Saturday’s 16 man bracket,” Johnson explained. “Then wrestle to see who is the best of the best.”

Johnson had six wrestlers who were among the best of the best. Ensley, Christoffersen, Miyasako, Sitko, Martinat and Gonzalez.

Ensley was the 119-pound champion and a No. 2 seed. He pinned his way through the tournament Friday and Saturday. He beat four state champions, two state runner-ups and multiple returning state placers for a chance at Gentry.

“Yes we were anxious to wrestle Gentry,” Johnson said. “We were extremely disappointed to miss the opportunity to defeat him on the mat. As far as I am concerned, contrary to what a different paper printed, Jeremy Ensley is the best 119-pounder in the state of Idaho at any level. I am very upset that we didn’t have the chance to prove it.”

Christoffersen also wrestled well and brought home a fifth place medal at 135 pounds. Miyasako, who was not seeded, came away with an impressive sixth place medal.

Sitko, Martinat and Gonzalez wrestled in the top 16 and Johnson said they are working hard to place at the state tournament.

The Trojans placed 13<sup>th</sup> among the teams and Burns, Oregon won first place.



Two points

Junior Varsity player Andrew Bingham goes high for two points against Middleton. Photo by Gregg Garrett.

Williams scores 22 in win over Nampa Christian

Homedale continued its winning streak this week with a 90-58 win over the Nampa Christian Trojans in non-conference boy’s basketball Tuesday before last. Trojan Nick Williams led the team with 22 points despite being benched most of the final quarters.

Williams scored on six three-point shots and racked up 17 total points in the first half.

Homedale’s win puts them at the top of the Idaho State 3A Preps Basketball polls. The Trojans knocked down 14 three pointers in the game on 22 attempts. But Nampa Christian put up a fight in the first half and only trailed 16-15 in the first quarter, but by the second quarter, Homedale turned up the juice and finished the first half 41-29.

Homedale opened the second half on a 9-1 run in the first two minutes then extended its lead to a 20-3 push five minutes into the half. Homedale outscored Nampa Christian 49-29 in the second half.

Garrett Sweet finished in the double digits giving Homedale 15 points. Luis Escutia and Matt Holloway added 12 points each and Brett Hopkins put in 11 including three triples.

Grizzlies hand Trojans first season loss

The Fruitland Grizzlies handed the Homedale Trojans its first loss of the season beating Homedale 53-40 on Thursday. But earlier in the week, a free throw shot clinched a game 54-53 between the Trojans and the Middleton Vikings.

The Grizzlies held Homedale to 28 percent (14-of-51) from the floor, while shooting 45 percent (20-of-44) in the win.

Nick Williams led Homedale with 25 points, but no other Trojan had more than six points.

Results from the Middleton game were not made available.



Winning shot

Homedale’s Luis Escutia is shown handling the ball during first half action against Middleton. Escutia sank the game winning free-throw with seconds left in the game for a 54-53 victory. Photo by Gregg Garrett.



# Americans’ passion for beef focus of biennial event

The 26th National Beef cook-off, funded in part by America’s Beef Producers through their \$1-per-head check-off, has begun accepting entries for the September 19-21, 2005, event in Rapid City, S.D. On behalf of the Cattlemen’s Beef Board and the Federation of State Beef Councils, the American National Cattle Women, Inc. are partnering with Albertsons to promote the cook-off.

America’s premier beef-cooking contest for family chefs is focusing on the passion Americans have for beef and, with the introduction of a new “Family Favorites” category, is showcasing original beef recipes that families enjoy during the week or for a special occasion. Twenty national finalists will compete for a \$50,000 “Best of Beef” grand prize and eight other cash prizes totaling \$110,000. The recipe entry deadline is March 31.

This year’s cook-off comes as Americans’ appetite for beef continues to climb. “A record \$70 billion in consumer expenditures on beef is projected in 2004 – a \$24 billion dollar increase over the annual average spending of the decade of the 1990’s,” says Randy Blach, executive vice president of CattleFax.

The cook-off is an integral part of the beef industry’s efforts to educate the public and reinforce positive perceptions about beef by showcasing the ease and versatility of cooking with beef, according to Laura Wilder, Executive Director for the Idaho Beef Council. In addition to promoting beef demand, the cook-off continues to drive awareness and purchase of fresh beef cuts, from the chuck and round that are undervalued, including the new value cuts. It also inspires consumers to try convenient refrigerated or frozen beef products.

“With Americans’ enduring enjoyment of beef, the cook-off offers the best opportunity for family chefs to share their beloved recipes and secrets with everyone,” says Sherry Hill, cook-off project manager. “And the fascinating thing is that the winning recipes always reflect and celebrate America’s changing tastes in beef.”

Besides “Family Favorites,” this year’s cook-off categories include Beef Market Basket, featuring any of a list of beef cuts, up to five market basket ingredients, and no more than two “wild card” ingredients to make a main dish recipe; Grilled Beef, a main dish recipe including eight ingredients or less; and “Inspired By” Beef Recipes, which include original creative beef recipes adapted from a family member or friend, a specific restaurant dish or a cookbook or culinary publication.

A complete version of the cook-off rules, with specific beef cut requirements allowed for each category, is available at the cook-off’s official Web site, [www.beefcookoff.org](http://www.beefcookoff.org).

# Sign-up for ewe replacement and retention program ends Thursday

Producers interested in signing up for the Ewe Lamb Replacement and Retention Payment Program (ELRRPP) need to complete their applications by Jan. 13, announced Steve Ulrich, the county executive director for the Owyhee County Farm Service Agency (FSA). Signup for this program to encourage the replacement and retention of ewe lamb breeding stock began on October 25, and will end Jan. 13.

According to Ulrich, “eligible producers who submit a complete and signed application by Jan. 13, will receive a nationally factored payment rate for ewe lambs purchased or retained between August and July 31.”

Other eligibility requirements include: the qualifying ewe lambs must have been retained in the herd for at least one complete offspring lambing cycle, the sheep and lamb operation must have been engaged in the business of producing and marketing agricultural products at the time of filing an application, the producer/operation may not have received funds under the previous Lamb Meat Adjustment Assistance Program (LMAAP) for the same ewe lamb, the qualifying ewe lamb must not have been older than 18 months for at least part of the base period and must not have produced an offspring; and operations must have been in compliance with all the requirements relating to the scrapie disease. Ewe lambs that were born before Feb. 1, 2002, are ineligible for benefits under this program.

Complete and signed applications must be received in the FSA County Offices by close of business Jan. 13. There are no provisions for late-filed applications and County Offices cannot approve applications received or requested after January 13<sup>th</sup>.

Contact your local FSA County Office for more information.

# USFWS determines sage-grouse not warranted for endangered listing

The U. S. Fish and Wildlife Service has completed its status review of the greater sage-grouse throughout its range and determined that the species does not warrant protection under the Endangered Species Act at this time, Director Steve Williams announced today.

This decision follows a recommendation made by agency senior regional scientists and managers that the sage-grouse does not warrant listing under the ESA. Williams publicly announced the regional recommendation last month.

“I have reviewed the work completed by our scientists and I am confident that they have conducted a thorough and rigorous review and their recommendation is based on the best available science,” Williams said. “I concur with their recommendation that the greater sage-grouse does not warrant the special protections of the Endangered Species Act across its range. At the same time, the status review clearly illustrates the need for continued efforts to conserve sage-grouse and sagebrush habitat on a long-term basis. I commend Federal and state agencies as well as the local working groups for their current efforts to maintain or improve sagebrush habitat and encourage them to continue to move forward with the new plans to develop and implement conservation strategies throughout the grouse’s range.”

Under the ESA, a species is endangered if it is in danger of extinction within all or a significant portion of its range, or threatened if the species is likely to become endangered within the foreseeable future. The Service received three petitions to list the greater sage-grouse range-wide as endangered or threatened, and began a formal status review in April 2004. During the status review, the Service considered all the available scientific and commercial information on greater sage-grouse and their habitats, including information provided by State and Federal agencies and Tribes, as well as information provided through public comments. The review included the Western Association of Fish and Wildlife Agencies’ Conservation Assessment of Greater Sage-Grouse and Sagebrush Habitats, a compilation of sage-grouse and sagebrush literature and data.

The Service used a structured analysis process to evaluate the factors potentially threatening greater sage-grouse populations and sagebrush habitat including wildfire, invasion of non-native plants, livestock management, agricultural conversion, urbanization, mining and energy development, predation, disease and other threats.

As part of this process, independent scientists from State and Federal agencies and State universities participated in a facilitated discussion on the biology and ecology of sage-grouse and the sagebrush ecosystem. The panel included experts in greater sage-grouse, plant ecology, rangeland health, and invasive species who were asked to apply their expert judgment to independently estimate the extinction risk for greater sage-grouse at various timeframes into the future. However, these scientists were not asked for and did not make recommendations on the petition finding. Their estimates and discussions occurred in the presence of a team of Service senior-level biologists in order to help ensure these biologists were aware of a diverse range of scientific points of view.

As part of the final decision-making process, Service scientists and managers considered the independent experts views as well as all available scientific and commercial information in making their final recommendation. They determined that greater sage-grouse are not likely to become endangered or threatened in the foreseeable future. The Director then reviewed the recommendation and concurred.

## DID YOU EVER THINK OF ADVERTISING AS ...



hiring an employee who could contact more than 7,200 homes and tell them about your merchandise or services?

An employee who could say exactly what you want, and work for what you can afford to pay?

We have.

REACH EVERY HOME IN THIS MARKET

### The Owyhee Avalanche

P.O. Box 97

Homedale ID 83628



# Looking back...

## from the files of The Owyhee Avalanche and Owyhee Chronicle

### 25 years ago

January 10, 1980

#### Wilderness decision expected

Owyhee ranchers are making plans to appeal an anticipated Bureau of Land Management decision on potential wilderness areas in Owyhee County.

The land under question is 394,635 acres in the Owyhee Resource Area, located in the western portion of the county. The BLM has been studying the area under guidelines laid down in the Federal Land Policy and Management Act, passed by Congress in 1976.

Ranchers, who graze cattle on BLM land in the area, contend locking the land up as wilderness would prevent and future improvement of the range and might compromise existing grazing rights.

On Friday, January 11, the BLM is expected to hand down its decision as to which lands within the Owyhee Resource Area will be put under intensive wilderness study. Although the ranchers have information which indicates a sizable portion of the 300,000 acres will be eliminated from further study, they say it’s not enough.

#### Manager will retire soon

Directors of the South Board of Control will be seeking a new manager following the announcement that the present manager plans to take an early retirement.

Board member Frank Dines of Marsing said manager Eric Knehans plans to retire as soon as a replacement can be found. Knehans made the announcement at the January 7 meeting of the board in Homedale.

#### Homedale births

Mr. and Mrs. Greg (Patricia) Grammater, Homedale, are parents of a 5 lb. 7 oz. daughter, Tasha Maureen, born on Wednesday, Jan. 2, at Caldwell Memorial Hospital.

Mr. and Mrs. Calvin (Bonnie) Walker, Homedale, are parents of an 8 lb. 11 ½ oz. daughter, Sarah, born on Thursday, Dec. 27, at Caldwell Memorial Hospital. She joins a brother, Vance 3, and two sisters, Melanie, 7, and Alison, 2. Mr. and Mrs. Elmer Barlow, Homedale, are maternal grandparents. Mr. and Mrs. Gerald Walker, Lewisville, Id., are paternal grandparents.

#### Marsing birth

Mr. and Mrs. Michael (Peggy) Floyd, Marsing are parents of a 7 lb. son, Nathan William, born Wednesday, Jan. 2 at Mercy Medical Center, Nampa. He joins two brothers, Greg 8, and Jeremy 5, and two sisters, Lori 7, and Natalie 1. Mr. and Mrs. Lloyd (Shirley) Floyd, Caldwell, are paternal grandparents. Ethel Cole and Gladys Dennis, both of Nampa, are paternal great grandmothers. Mr. and Mrs. Herb (Elsie) Hendershot, Nampa, are maternal grandparents. Mrs. Edith Tibbits, Providence, Utah, is maternal great grandmother.

#### Drum elected

Donald Drum of Homedale has been elected to membership in the American Angus Association, a national organization with headquarters in St. Joseph, Mo.

#### Homedale locals

Mr. and Mrs. Earl Klahr and Mr. and Mrs. Elmer Prow dined at the Hong Kong Café, Nampa, last Thursday evening in observance of their first 38<sup>th</sup> wedding anniversaries, respectively. After dinner, the evening was spent at the Klahr home. On Sunday evening, Mr. and Mrs. Larry Prow, Brenda Sutterfield and Verva Ferguson and their families hosted Mr. and rms. Elmer Prow to dinner at the Hong Kong for their wedding anniversary.

Mr. and Mrs. Mike Parker returned on Saturday from a two week vacation over Christmas with his brother and wife, Dr. and Mrs. Pat Parker, Grand Prairie, Texas. During their stay, they toured points of interest, including a trip into Mexico.

Mr. and Mrs. Bill Ferguson and Mr. and Mrs. Elmer Prow attended a New Year’s Eve party at the John Malmberg home, Marsing.

#### Lodges install officers

Open joint installation of officers for 1980 was held by Empire Lodge No. 143, IOOF, and Empress Rebekah Lodge No. 121, last Friday evening, Jan. 4 District 10.

Elective officers installed for the Odd Fellows were Glenn Bennett, Noble Grand; Ted Marston, vice Grand; Jack Stansell, recording secretary; Bill Marston, treasurer.

Elective Rebekah officers installed were Mildred Stevenson, Noble Grand; Celia Davidson, Vice rand; Kathryn Matteson, recording secretary; Florence Klahr, as financial secretary; Grace Little, treasurer.

All appointive and courtesy officers of both lodges were installed also.

### 50 years ago

January 13, 1955

#### Tax collections are very good

Collections of real property taxes in Owyhee county for the past year are “quite good”, according to Sadie S. Eisenhart, county treasurer, who reported that the total 1954 tax charge of \$500,915.21, collections have amounted to \$311,939.15, leaving an outstanding balance yet to be collected of \$188,976.06.

#### Jr. band parents organize club

A Junior Band Parents Club has been organized in Homedale, and had their first meeting Tuesday evening in the Band Room of the new grade school.

Officers were elected as follows: Joe Eiguren, president; Mrs. Dean Brandon, vice president; and Mr. Edwin Stansell, secretary-treasurer.

A committee was formed to study bylaws and rules in order that a club charter may be obtained. It was also decided during the course of business that band uniforms will be ordered for the children in the Junior Band.

This club, whose purpose it is to help and encourage the children in their band work, will meet once a moth on the first Tuesday evening.

#### Farmers to vote Wednesday on Soil Conservation Dist.

The State Soil Conservation Commission of Idaho has set Wednesday, January 19 as the voting day for the inclusion of additional territory within the Owyhee Soil Conservation district. The boundaries of this inclusion will include all lands in the Gem District (Marsing and Homedale area.)

All land owners whose lands lie within the boundaries of the inclusion are eligible to vote. Land owners includes any person, firm or corporation who holds title to any lands lying within the inclusion area. A buyer on contract who is the occupier of the land shall be eligible to vote. As owner of community property, man and wife are both entitled to vote.

#### Marsing

Tuesday a social was held for the Relief Society visiting teachers Cement was poured the past week for a new addition to the Noval Larsen home.

Mr. and Mrs. Boyd Petersen are the parents of a son born January 9<sup>th</sup>.

Mrs. Albert Frei was returned home from the hospital last week after major surgery.

The young people of the Assembly of God Church of Marsing held an exchange service with the Nampa Assembly of God group Wednesday evening.

Claudia Young entertained the flu several days last week.

Mr. and Mrs. Clyde young and daughters, accompanied by Daveta Petersen, visited in the Ray Goodin home in Parma on Sunday.

Mr. and Mrs. Nils Petersen visited the Rip Clapiers Friday evening.

Mr. and Mrs. Dale Dobbin and Mr. and Mrs. Kenny Bleknap entertained at the Dobbin home on Saturday evening with a buffet supper and six tables of pinochle. High prizes went to Jack Harris and Ruth Bish; floating to Mag Smith; and low to Ronald and Heen Dobbin.

The regular meeting of the Pioneers of Jump Creek was held at the Kenny Belknap home Friday. Mrs. Opal Cossal was co hostess. A bridal shower was given for Mrs. Glen Burman and a delicious lunch was served.

June clover spent Sunday night with Gail Floyd.

A group from the Nazarene College at Nampa presented the program at the young people’s meeting Sunday evening at the Marsing Nazarene church.

Mr. and Mrs. Earl Curt and family and Mr. and Mrs. Rip Caliper were dinner guests in the Harold Curt home Sunday.

The Ray Staffords visited the Fred hales Monday evening.

### 138 years ago

January 12, 1867

COUNTY OFFICERS. Several of the offices changed hands last Monday.

A.C. Springer, Esq., succeeded L. Stanford in the office of Sheriff by appointment in November last, and now has filed his bonds and takes the office by virtue of his election last August. The fact that Mr. Springer has held the position of Deputy under his predecessor and been elected to the office with a political majority against him, afford strong guarantees of his fitness for Sheriff of Owyhee County. We have so often had occasion to speak in complimentary terms of him in the discharge of his official duties, that a repetition now would appear superfluous.

The Recorder’s office, since the organization of the County, has been held by Judge Gilmore hays – first by appointment and the last two years by election. His integrity and efficiency in the office have been constant and subjects of common remark. He was ever watchful of the County’s welfare and the very healthy condition of Owyhee County affairs as compared to others in the Territory, is in a great measure due to his labor and counsel. By virtue of his office, he was Clerk of the Board of County Commissioners; hence, as Auditory, Clerk and Recorder his influence upon County business was large and at all time beneficial. The duties of Recorder (and we believe Auditor) now devolve upon L. W. Greenwell, Esq., elected last August. As we said then, we now repeat, Mr. Greenwell is thoroughly qualified to fill the office properly, and we have full confidences the public will have no cause to regret his election. He has applauded R. L. Chase, Esq., Deputy, who is a neat penman, correct accountant and a gentlemen with whom it will be a pleasure to transact business.

Dr. A. E. Woodson takes the office of County Clerk, an office segregated from that of Recorder and for the first time a distinct one in this County. The position is not one of great profit but we believe sufficiently lucrative to make it desirable, and the duties of which the Dr. is competent to discharge well and faithfully – to which manner we fully expect they will be performed under his administration.

Dr. T. D. Beckett has held the purse for the past two yeas, and in turning over his books and cash to his successor and rendering an account of his stewardship to the Commissioner, he knows a clear record and retires from the office in good shape, without any but words of approval of his management of the Treasurer’s office. We take no pleasure in writing an official obituary of so good an officer; but, Dr., “circumstances over which neither you nor us had control” has rendered his duty necessary. Col. A. H. Webb succeeds the Dr. in the Treasurer ship, in whose hands the funds will be honestly and correctly manages – notwithstanding he thinks the demand of the commissioners to give bonds in the sum of \$20,000 (while his predecessor’s was only \$5,000) rather heavy. The Col. Could easily perpetuate the good joke on them by presenting them with a \$20,000 bond.

O.H. Purdy, Esq., the former incumbent, continues in the office of Superintendent of Common schools to which position he as elected at the recent election.

L. F. Alpy, is County Coroner, an office the duties of which have heretofore been performed by Justices of the Peace.

Who will be the County Commissioners is not definitely settled. Messrs. George Carter and Seth Catlin (members of the old Board) held a session this week. Thos. J. Butler, recently appointed by Governor Ballard, applied for his seat, but was refused for two reasons. A court decision that the Governor had no right to appoint. That a bill was mending the Legislature in which the old Board (including J. H. Johnson) is continued in office until the next regular election. J. H. Johnson, applied for a seat in the Board, basing his application upon the Act of the Legislature to which we make reference. He was refused a seat until the legality of his claim could be tested.

FESTIVE. There was a most social and pleasurable dancing party in Ruby City on Tuesday evening. The dancing was in the building formerly occupied by W., P. & Co., which was rather small for the company. About two dozen ladies were present and nearly all danced and the temptation was so charming that women took part who never did before. The music was by the quadrille members (four) of the Owyhee Band and was just the “concord of sweet sounds” for the occasion. The supper was furnished by Mr. Hult, of the New State Hotel, and was gotten up nicely and fit for an epicure. Altogether it was a happy and harmonious dance lasting till 4 am next morning.



Commentary

Baxter Black, DVM



On the edge of common sense

Hey cowgirl, need a ride?

You can talk about the glamour and the love of rodeo  
The challenge and the heartbreak of the dally and the throw  
Of the guts and luck and glory, the leather and the sweat  
The gristle and the power of the bull that ain't rode yet

And the get up-in-the-morning and the miles-down-the-road  
And the bronc that stands awaitin' and the rope that ain't been thrown  
The vision of the buckle worn by superhuman champs  
And paid for in contusions, broken bones, in aches and cramps

And mothers in the bleachers and spouses back at home  
Who keep the home fires burning while their darlin' loved ones roam  
The siren's call of rodeo that beckons one last ride  
The gambler's itch, the mountain top, the pinnacle, the pride

The reason they give all they have is measured in a score  
A crowd, a millisecond, flag and timer, judge and roar  
But for some the lure is simpler, the attraction that still pulls  
Like me...just gettin' girls was the reason I rode bulls!

Wayne Cornell

Not important ... but possibly of interest



I slipped a CD into my computer to generate a little background music while I worked on a project. The strains of the 1965 hit tune “Get off My Cloud” by the Rolling Stones filled my head. Nothing triggers memories for me as quickly as music. When I hear certain songs from the past, I’m suddenly in a different place and a different time, experiencing flashes of the same feelings I felt when that particular melody was initially imprinted in my brain. The nostalgic burst caused by the old song only lasted an instant. But for that microsecond I wasn’t 59 years old with 60 around the corner. I was a 20-year-old with a full blown case of raging hormones, blasting along the winding road on the south side of Lake Lowell, running through the gears of my car’s four-speed manual transmission on my almost-nightly run from Kuna to Marsing to see the brown-eyed girl I had met earlier that year. During the musical flash from the past, my hair is brown. I can do real manual labor for eight hours, then go back and do it again the following day on three hours sleep. While the song is playing, I am on the verge of financial insolvency. But life is grand as long as I have gas in the car with enough change left over for a couple of milkshakes and the price of admission to the IOOF Hall dance in Caldwell on Saturday night. In my musical memory I can go back to the sage-

covered hilltop overlooking the Snake River Valley where we stopped frequently to admire the stars and the twinkling lights below. But the musical memory fades before Mick Jagger finishes the first verse. I am rudely snapped back to the present where I would not even think of trying to make it from Kuna to Marsing in 26 minutes. I am back to today, where I wouldn’t trade the automatic transmission in my lumbering underpowered, top-heavy 10-year-old SUV for any vehicle with a “stick shift.” In my non-musically-enhanced world, my hair is gray and my joints ache after any real physical labor. A night of sound sleep is something to be savored and just getting to sleep can be hard work. It has probably been 10 years since I danced to the music of any band. When the Rolling Stones flashback fades, the hill where we once parked is occupied by the home of one of the state’s best-known jurists. Although the old Rock and Roll songs remind me that I’m not what I used to be, they really aren’t depressing. My hormones may no longer rage but when I pick up our 18-month-old granddaughter and she says “Hi, Dranpa”, the feeling in my chest is every bit as intense as what I felt for her grandmother 40 years ago. And her rendition the Elmo song (“Eeee El Mmmm Oooo, Eeee El Mmmm Oooo!”) beats the heck out of any song ever recorded by the Rolling Stones.

Letter to the editor  
Consider our domestic market

On the heels of the U.S. Dept of Agriculture’s decision to open the border to the importation of live cattle from Canada came startling news. A day after the USDA agreed to re-open the border with some restrictions came news that a “downer cow” in Northern Alberta showed multiple positive results for mad cow. The restrictions the USDA alluded to are supposedly based on scientific review but USDA also made it clear that even if the cow proved positive Canadian live cattle would be allowed to enter. They said that, “because of the mitigation measures Canada has in place they believed the risk was minimal.” I believe in fair trade but not at the expense of safe trade. Allowing the border to open without answering lingering questions about safety would be a travesty. Not only do we need to consider our own export market but our domestic one as well. Importing mad cow cases or insinuation of the same would be akin to destroying America’s livestock industry. Rep Pomeroy a North Dakota Democrat said the decision was “outrageous.” He charged the Agriculture Dept leadership of caring “more about the interest of mega feed lots and processors than the interests of farmers, ranchers and consumers.”

I’m inclined to believe Congressman Pomeroy’s assumptions are correct and I hope opening the border doesn’t prove him right. In the mean time it is vital that we contact our congressional delegation and express our concerns.  
Michael F. Hanley IV  
Jordan Valley

Subscribe today!

and have  
The Owyhee Avalanche delivered to your home each week!

337-4681

Established 1865  
The Owyhee Avalanche  
P.O. Box 97 • HOMEDALE, IDAHO 83628



Commentary

Muslims Vs. Muslims:  
The Untold Story

By Sherrie Gossett, Associate Editor of the AIM Report

Looking back on 2004, much was heard about the alleged desecration of Muslim holy sites by American troops fighting in Iraq. Protests against American troops were held around the world and Arab governments issued statements of condemnation.

What goes largely unreported is the fact that Muslims have been attacking, desecrating, and destroying their own mosques, shrines and holy sites. One case involves turning the Prophet Mohammed’s childhood home into a public restroom. The Wahhabi form of Islam regards these religious buildings, structures and relics as idols to be destroyed.

But the focus was on Iraq and American “desecration.” The Chairman of the Expediency Council in Iran, ex-president Ayatollah Akbar Hashemi-Rafsanjani, took to the airwaves to express “deep concern” for the desecration of the holy sites in the Iraqi cities of Karbala and Najaf and the Sahlah Mosque. He added: “These actions will have no other consequence but creating a deep hatred in the heart of the Muslims against the occupiers and speeding up the destruction of the aggressors.” His comments were carried by the BBC.

The BBC also carried comments from Lebanese Hezbollah Secretary-General Hasan Nasrallah, who warned America of “serious repercussions” for what he termed their “violation” of the holy Iraqi cities of Al-Najaf and Karbala.

The issue soon became central in the militant religious call for Iraqis to resist Americans. In addition to protests in Iran, South Korea and Kashmir, media reported on “Grief Day” in Pakistan where rallies were launched by religious leaders in Islamabad and all four provincial regions. Some of the signs read: “Coalition! Leave Holy Soil,” “Death to US aggression” and “Enemy of Islam □ America.”

Official resolutions condemning the American “desecration” were passed by government bodies in Pakistan and Iran. Ironically, however, during the same month that thousands of Pakistanis took to the streets in a furor over what America was doing in Iraq, zealots with the backing of the Pakistani police stormed the Ahmadiyya mosque in Nakhhalpara, Pakistan, to remove books deemed offensive to Islam and banned by the government.

The Ahmadiyya sect of Islam has had its mosques attacked and reduced to rubble and their creeds erased from the front of mosques. This sect is singled out as heretical because it is dedicated to non-violence and opposes terrorism.

The Ahmadiyya movement considers itself the true reflection of Muslim spirituality, but their opponents are appalled that they call themselves Muslims and describe their own houses of worship as “Masjids” or mosques. The sect is considered blasphemers by fanatical Islamists and has been under serious persecution in Pakistan since the 1980’s when the government issued edicts against it.

Reports by human rights organizations have documented the persecution. Observers say for 15 years their mosques have been vandalized and reduced to rubble. Some mosques remain incomplete due to a ban forbidding them to build minarets.

Giving Pakistan a run for their money, though, is the astonishing scope of destruction of Islamic sites in Saudi Arabia. Historic tombs, landmarks, mosques and battle sites, all central to the Muslim faith, have either been destroyed or been ordered to be destroyed. The birthplace of Mohammed, founder of the Islamic faith, was razed over and turned into a public restroom.

In June of last year, the Islamic Supreme Council of America called for the support of the world community, UNESCO and the United Nations to stop the destruction of venerated Muslim relics in Saudi Arabia. They issued two press releases detailing the damage being done. Three months later the Wall Street Journal covered the issue in a front page report, and the Weekly Standard followed suit, but a Lexis Nexis search turns up no other coverage.

Behind the moves are the Wahhabist radicals who, like

the Taliban, believe reverence for any image or building is idolatrous. Unscrupulous businessmen looking for real estate development projects also support the destruction. In November the Associated Press reported on an \$8 billion plan to develop Mecca, but omitted any reference to the destruction.

The general media blackout is surprising given the worldwide coverage of the Taliban’s destruction of ancient Buddhist statues in Afghanistan in 2001, a move which was universally seen as a great cultural loss. Indeed, the U.N.’s

Kofi Annan seemed more concerned about the destruction of the statues than the fact that the Taliban had turned the country over to Osama bin Laden’s terrorists.

Exclusive media focus on American desecration allowed Muslim destruction to go unnoticed and unchallenged. In this historically significant failure, most media disregarded the big picture of the expanding reach of Wahhabist fundamentalism in Saudi Arabia and Pakistan, via the destruction of holy sites and artifacts, and what that means for the world.

Farm Bureau  
Send water deal back  
to the negotiating table

By Frank Priestley, President

After a strenuous review process, Idaho Farm Bureau Federation delegates voted to oppose the Nez Perce Water Agreement on December 2. After putting forth the effort to understand what this complex agreement does and doesn’t do, we believe that although there are many positives, the compromise of private property rights outweighs the potential benefits.

The attorneys and others who negotiated the Mediator’s Term Sheet did an adequate job in looking out for irrigation interests and finding creative ways to lessen endangered species concerns on certain species. However, the tradeoff comes in a compromise to private property rights that Farm Bureau members cannot support.

Not long after the agreement was released for public consumption, north Idaho landowners began raising serious concerns about private property rights – a fundamental Farm Bureau belief. Idaho Farm Bureau recognizes timber as an agricultural commodity and supports the Idaho Forest Practices Act (IFPA). We oppose new regulations that go above and beyond IFPA. The Nez Perce Agreement appears to supersede IFPA in that it reclassifies streams, extends buffer zones on either side of streams and restricts

the amount of timber landowners can harvest on private land. The state has vigorously defended the current buffer zones, established by the IFPA as being sufficient to protect wildlife, soil, air and water.

In addition, the agreement requires these landowners to grant access to private land to state agencies for mapping and habitat monitoring activities. Further, the agreement calls into question how this land inside the buffer zones that is no longer available for timber harvest will be taxed. Will the landowner be expected to pay property taxes on land he can gain no income from?

The agreement doesn’t spell these details out and there are dozens of other similar examples sprinkled throughout the term sheet. The forestry component is voluntary but landowners who don’t sign up will be in obvious jeopardy of lawsuits from environmental groups.

Another dubious aspect of the forestry component of the agreement is that while state, federal and private land are subject to these new regulations, Nez Perce Tribal lands are exempt.

The Idaho Farm Bureau has a statewide membership made up of many diverse interests. One thing we all have in common is private property ownership and defending private property rights is one of our most important charges. The Nez Perce Agreement compromises private property rights and in doing so pits north Idaho landowners against south Idaho irrigators. If we are willing to compromise the private property rights of our neighbors, what might we be expected to compromise next?

Here’s  
something  
everyone  
should  
know!



The Avalanche is one of the first newspapers in the state, having been established in 1865 at Ruby City. The Avalanche was the first daily newspaper in the Idaho Territory. The Avalanche was the first newspaper in the Idaho Territory to be linked to the outside world with telegraph service.

Today, the Avalanche is the only newspaper published in Owyhee County, and has more paid subscribers in the county than any other newspaper. It is the only source of local, school, and county and city government news. The Avalanche is the official newspaper of Owyhee County, the cities of Homedale, Marsing, and Grand View, and school districts and other taxing entities within the county.

Shouldn’t you be a regular subscriber?

The Owyhee Avalanche

337-4681 • Homedale



# Public notices

## OWYHEE COUNTY COMMISSIONERS MINUTES DECEMBER 27, 2004 OWYHEE COUNTY COURTHOUSE MURPHY, IDAHO

Present were Commissioner Tolmie, Commissioner Reynolds, Commissioner Salove, Clerk Sherburn, Treasurer Wright, Sheriff Aman, and Jim Desmond.

The Board moved to amend the agenda to include a pay raise request, and a letter to a private citizen concerning county weed program.

The Board approved and signed the annual road report to be sent to the State Controller.

Museum Director Tom Couch met with the Board concerning an unpaid claim to Nampa Drain & Septic. The Board requested an itemized statement from the vendor.

The Board approved the 2005 AOP within the Jordan Valley Cooperative Weed Management Area.

The Board approved the request from the Treasurer to reduce the solid waste fee for 2005 on Parcel No. 04S01E306300 to \$40.00.

The Board opened the bids submitted for the purchase of two vehicles for the sheriff's department. Three bids were submitted for 2-2005 F250 pickups. The Board accepted the lowest bid from Dan Wiebold Ford in the amount of \$23,593.60 per vehicle.

The Board authorized a request from the Assessor for a pay increase for an employee from a 4A to a 4B.

The Board approved and

signed a letter to be sent to a concerned citizen regarding the operation procedure of the weed department.

Larry McDaniel met with the Board to discuss placing a road sign to reduce speed on Reynolds Creek Road. No action was taken

The Board took the following action on pending Indigent and Charity cases. I.C. Case No. 04-64 the Board approved with a reimbursement agreement signed. I.C. Case No. 04-61 denied by the Board, incomplete application.

There being no further business the Board moved for adjournment.

The complete minutes can be viewed in the Clerk's office.  
s.s/ Harold Tolmie  
s.s/Attest: Charlotte Sherburn  
1/12/05

**The following application(s) have been filed to appropriate the public waters of the State of Idaho:**  
**57-11671**

VELLA M HAMMOND  
11224 EDGE HILL DR  
BOISE ID 82709  
G DALE HAMMOND  
11224 W EDGEHILL DR  
BOISE ID 83709  
Point(s) of Diversion SESWSE S36 T04N R06W OWYHEE County Source SPRING Tributary To SINKS  
Use: STOCKWATER 01/01 To 12/31 0.02 CFS  
Total Diversion: 0.02 CFS  
Date Filed: 12/16/2004  
Place Of Use: STOCKWATER T04N R06W S36 SESE  
Permits will be subject to all prior water rights. Protests may be submitted based on the criteria of Sec 42-203A, Idaho Code.

Any protest against the approval of this application must be filed with the Director, Dept. of Water Resource, Western Region, 2735 Airport Wy, Boise ID 83705 together with a protest fee of \$25.00 for each application on or before 01/24/2005. The protestant must also send a copy of the protest to the applicant.

KARL J DREHER, Director  
1/5,12/05

**PROPOSED CHANGE OF WATER RIGHT**  
THE FOLLOWING THREE TRANSFERS HAVE BEEN FILED WITH IDAHO DEPT. OF WATER RESOURCES (IDWR) ON THE SAME WATER RIGHT WITH A 1949 PRIORITY DATE. ALL THE TRANSFER ARE LOCATED IN HIDDEN VALLEY ESTATES SUBDIVISION LOCATED FOUR MILES SOUTH OF MARSING AND ½ MILE EAST OF HIGHWAY 78:

Sanwann LLC of 4225 Riva Ridge Way, Boise, ID 83709 filed application for transfer no. 71510 totaling 0.04 cfs from the Snake River. The purpose of the transfer is to split the right and add a separate pump in the river to irrigate a separate parcel resulting from the split instead of using the original pump that served the entire acreage. The proposed site is aka Lot 4, Block 1.

Glen and Valerie Schorzman of 7752 Riverfront Drive, Marsing, ID 83639 filed application for transfer no. 71509 totaling 0.04 cfs from the Snake River. The purpose of the transfer is to split the right and add a separate pump in the river to irrigate their parcel resulting from the split instead

of using the original pump that served the entire acreage. The new river pump located in Lot 12, Block 1 will be shared with the owners of the transfer number 71510 mentioned below. The proposed site the water right will be put to use is aka Lot 13, Block 1.

Frederick Ashworth Jr. and Down Roy of 7726 Riverfront Drive, Marsing, ID 83639 filed application for transfer no. 71510 totaling 0.04 cfs from the Snake River. The purpose of the transfer is to split the right and add a separate pump in the river to irrigate their parcel resulting from the split instead of using the original pump that served the entire acreage. The new river pump located in Lot 12, Block 1 will be shared with the owners of the transfer number 71509 mentioned above. The proposed site the water right will be put to use is aka Lot 12, Block 1.

For specific details regarding the above applications, please contact IDWR Western Region at 208-334-2190 or visit [www.idwr.state.id.us](http://www.idwr.state.id.us) with detail provided under "new water right applications". Protests may be submitted based on the criteria of Sec 42-222, Idaho Code. Any protest against the proposed change must be filed with the Department of Water Resources, Western Region, 2735 Airport Wy, Boise ID 83705-5082 together with a protest fee of \$25.00 for each application on or before January 24, 2005. The protestant must also send a copy of the protest to the applicant.

KARL J DREHER, Director

1/5,12/05

**NOTICE**  
Pursuant to Idaho Code 25-2301, the State Brand Inspector is holding one bwf cow, found on South Mountain, Owyhee County. She will be sold at Treasure Valley Livestock on Friday 12/14/04. May be claimed with proof of ownership and paying all expenses. 459-4231  
1/5,12/05

# Subscribe today!

and have  
**The Owyhee Avalanche**  
delivered  
to your home  
each week!

## 337-4681

Established 1895

The Owyhee Avalanche

P.O. Box 97 • HOMEDALE, IDAHO 83628

## TREASURER'S AUDITOR'S QUARTERLY REPORT

FROM 10/01/2004 TO 12/31/2004		FIRST QUARTER		*** FUNDS WITH NO ACTIVITY WILL NOT APPEAR ON REPORT ***		
----- TREASURER'S CASH -----						
Fund	Beginning Balance	Receipts and Transfers	Disbursements and Transfers	Ending Balance	Outstanding Warrants	Available Cash Balance
GENERAL GOVERNMENT FUNDS						
0001 CURRENT EXPENSE	1,192,509.98	174,570.57	731,841.45	635,239.10	110,700.91	524,538.19
0002 ROAD AND BRIDGE	820,355.41	23,494.71	271,540.75	572,309.37	23,249.79	549,059.58
0003 AIRPORT	70,281.11	187.93		70,449.04		70,449.04
0005 BOND REDEMPTION	193,812.91	8,542.22		202,355.13		202,355.13
0008 DISTRICT COURT	76,756.44	15,192.44	33,560.23	58,388.65	6,822.80	51,565.85
0007 FAIR, COUNTY	30,474.87	2,194.07		32,668.94		32,668.94
0008 FAIR, GROUNDS AND BUILDINGS	41,818.71	3,155.80	11,371.03	33,402.58	9,858.24	23,544.34
0010 PROBATION	41,402.08	40,557.23	38,494.52	43,474.79	7,594.88	35,879.91
0011 HEALTH DISTRICT	13,078.38	3,810.80	16,947.12	[57.94]		[57.94]
0012 HISTORICAL SOCIETY & MUSEUM	22,996.04	3,425.30	9,437.37	16,983.97	1,809.31	15,174.66
0016 INDIGENT AND CHARITY	137,155.32	28,340.72	65,458.54	100,037.50	720.84	99,316.66
0017 JUNIOR COLLEGE TUITION	87,402.17	3,289.34	6,300.00	84,391.51		84,391.51
0019 PEST	4,814.81	221.18		5,036.79		5,036.79
0020 REVALUATION	87,453.74	10,501.32	37,054.15	60,900.91	8,172.84	52,728.07
0023 SOLID WASTE	370,275.98	33,829.43	62,137.15	341,968.26	10,236.67	331,731.59
0024 TORT	102,697.78	4,817.13	32,103.50	75,411.39		75,411.39
0025 VETERANS MEMORIAL	1,196.02	77.94	800.00	673.96		673.96
0028 WARRANT REDEMPTION	43,247.06	-		43,247.06		43,247.06
0027 WEEDS	51,523.54	7,260.09	20,970.52	47,813.11	1,244.53	46,568.58
0028 911	17,014.72		149,320.09	66,334.61	2,222.38	64,112.23
GENERAL GOVERNMENT FUNDS TOTALS	3,416,168.85	363,428.32	1,286,294.24	2,493,309.93	182,723.69	2,310,586.24
AGENCY FUNDS	183,332.46	402,144.78	532,297.62	33,179.62	30,286.13	3,893.49
TRUST FUNDS	1,738,105.58	226,691.88	288,992.40	1,693,804.04	8,098.88	1,685,705.16
TOTAL ALL FUNDS	5,337,606.89	992,264.98	2,107,583.26	4,220,294.59	219,108.70	4,001,185.89

I HEREBY CERTIFY THAT THE ABOVE STATEMENT IS TRUE AND CORRECT AND HAS BEEN APPROVED BY THE BOARD OF COUNTY COMMISSIONERS ON THE

3rd DAY OF January 2005  
Barbara Wright  
BARBARA WRIGHT  
TREASURER, OWYHEE COUNTY  
Charlotte Sherburn  
CHARLOTTE SHERBURN  
AUDITOR, OWYHEE COUNTY



# Public notices

**Notice of Rescheduled Trustee's Sale**  
**Loan No: 1001414612**  
**T.S. No.: 61502-F**

Notice Of Trustee's Sale On 2/23/2005, at 11:00AM (recognized local time) at the main entrance to the Owyhee County Courthouse 20381 State Highway 78 Murphy, ID 83650. In the County of Owyhee, State of Idaho, First American Title Insurance Company by Alliance Title Company, its duly authorized agent, as trustee on behalf of Indymac Bank, will sell at public auction to the highest bidder, for cash, in lawful money of the United States, all payable at the time of sale, the following described real property, situated in the County of Owyhee, State of Idaho, and described as follows: In township 2 north, range 4 west, Boise Meridian, Owyhee County, Idaho section 35: east one-half of the west one-half of the southeast quarter of the southwest quarter. The Trustee has no knowledge of a more particular description of the above referenced real property, but for the purposes of compliance with section 60-113 Idaho Code, the Trustee has been informed that the address of: HC 79 Box 966 Opaline Road Melba, ID 83641, is sometimes associated with the said real property. Said sale will be made without covenant or warranty, regarding title, possession or encumbrances to satisfy the obligation secured by and pursuant to the power of sale conferred in the Deed of Trust executed by: Deirdre M. Wilson, a married woman, As grantor(s), To: First American Title Insurance Company by Alliance Title Company, Its duly authorized agent, as successor Trustee, for the benefit and security of DMI, Inc., as Beneficiary, dated 4/10/2001, recorded 4/17/2001, as Instrument No. 235630, records of Owyhee County, Idaho. Please Note: The above Grantors are named to comply with section 45-1506(4)(A), Idaho Code. No representation is made that they are, or are not, presently responsible for this obligation set forth herein. The Default for which this sale is to be made is the failure to pay when due, under Deed of Trust and Note dated 4/10/2001. The monthly payments for Principal, Interest and Impounds (if applicable) of \$1,855.87 due per month from 8/1/2003 through 2/23/2005, and all subsequent payments until the dates of sale or reinstatement. The principal balance owing as of this date on the obligation secured by said Deed of Trust is \$226,885.22, plus accrued interest at the rate of 7.5% per annum from 7/1/2003 All delinquent amounts are now due, together with accruing late charges, and interest, unpaid and accruing taxes, assessments, trustee's fees, attorney's fees, and any amounts advanced to protect the security associated with this foreclosure and that the beneficiary elects to sell or cause the trust property to be sold to satisfy said obligation. Dated: January 6, 2005 By: First American Title Insurance Company By Alliance Title Company, Its Duly Authorized Agent Les Poppitt Viced President Alliance Default Services, a division of Alliance Title Company 1201 Dove Street, Suite 400 Newport Beach, CA 92660 P225254.  
1/12,19,26;2/2/05

Buy it, sell it,  
trade it, rent it...  
in the  
**Classifieds!**

**NOTICE OF TRUSTEE'S SALE**  
**Trustee's Sale No. 02-HH-38068**

Notice is hereby given that, Regional Trustee Services Corporation, the duly appointed Successor Trustee, will on April 15, 2005, at the hour of 11:00 AM, of said day, on the steps of the Owyhee County Courthouse, located at the corner of Highway 78 and Hailey Street, Murphy, ID, sell at public auction to the highest bidder, for cash, in lawful money of the United States, all payable at the time of sale, the following described real and personal property (hereafter referred to collectively as the "Property"), situated in the County of Owyhee, State of Idaho, to-wit: EXHIBIT "A" The land referred to in this policy is described as follows: A tract of land situated within that portion of the Southeast Quarter Northeast Quarter of Section 24, Township 3 North, Range 5 West, Boise Meridian, Owyhee County, Idaho, lying North and East of the railroad right of way described as follows: COMMENCING at a point where the East boundary line of said Southeast Quarter Northeast Quarter intersects the North boundary line of said railroad right of way; and Continuing North along the East boundary line of said Southeast Quarter Northeast Quarter a distance of 400 feet; thence North 63° 18' 56" West on a line parallel with the North boundary line of said railroad right of way and 400 feet North thereof a distance of 762.5 feet, being the REAL POINT OF BEGINNING; thence continuing North 63° 18' 56" West on a line parallel with the North boundary line of said railroad right of way and 400 feet North thereof a distance of 109 feet; thence South 0° 18' 30" East on a line parallel with the East boundary line of said Southeast Quarter Northeast Quarter a distance of 400 feet to the North boundary line of said railroad right of way; thence Southeasterly along the North boundary line of the said railroad right of way a distance of 109 feet; thence North 0° 18' 30" west on a line parallel with the East boundary line of said Southeast Quarter Northeast Quarter a distance of 400 feet to the REAL POINT OF BEGINNING. The Trustee has no knowledge of a more particular description of the above-referenced Property but, for purposes of compliance with Section 60-113 of Idaho Code, the Trustee has been informed that the address of 4761 Titus Lane, Marsing, ID 83639, is sometimes associated with said real property. Said sale will be made without covenant or warranty regarding title, possession or encumbrances to satisfy the obligation secured by and pursuant to the power of sale conferred in the Deed of Trust executed by Aaron Jerome, a married man, as Grantor, to Title One, as Trustee, for the benefit and security of Mortgage Electronic Registration Systems, Inc., as nominee for its successors and assigns, as Beneficiary, dated 4/11/2003, recorded 4/17/2003, under Instrument No. 243201, Mortgage records of Owyhee County, Idaho, the beneficial interest in which is presently held by Mortgage Electronic Registration Systems, Inc., as nominee for its successors and assigns. The above Grantors are named to comply with Section 45-1506(4)(A), Idaho Code. No

representation is made that they are, or are not, presently responsible for this obligation. The default for which is sale is made is the failure to pay when due under the Deed of Trust Note dated 4/11/2003, the monthly payment which became due on 7/1/2004 and all subsequent monthly payments, plus late charges and other costs and fees as set forth. Amount due as of December 8, 2004 Delinquent Payments from July 01, 2004 1 payments at \$467.19 each \$467.19 4 payments at \$505.36 each \$2,021.44 1 payments at \$505.28 each \$505.28 (07-01-04 through 12-08-04) Late Charges: \$0.00 Beneficiary Advances: \$0.00 Suspense Credit: \$0.00 Total: \$2,993.91 All delinquencies are now due, together with unpaid and accruing taxes, assessments, trustee's fees, attorney's fees, costs and advances made to protect the security associated with this foreclosure. The principal balance is \$59,426.81, together with interest thereon at 7.750% per annum from 6/1/2004 to 8/1/2004, 7.750% per annum from 8/1/2004 to 12/1/2004, 7.750% per annum from 12/1/2004, until paid. The Beneficiary elects to sell or cause the trust property to be sold to satisfy said obligation. Anyone having any objection to the sale on any grounds whatsoever will be afforded an opportunity to be heard as to those objections if they bring a lawsuit to restrain the same. Dated: December 08, 2004 Regional Trustee Services Corporation, Trustee By Nanci Lambert c/o Regional Trustee Services Corporation, 616 1st Avenue, Suite 500, Seattle, WA 98104 Phone: (206) 340-2550 Sale Information: <http://www.rtrustee.com> ASAP623817  
12/22,29/04;01/5,12/05

**Notice Of Trustee's Sale**  
**Loan No: 1448197**  
**T.S. No.: 04-1369-ID**

On 4/28/2005, at 11:00 AM (recognized local time) At the entrance to Owyhee County Courthouse 20381 State Highway 78 Murphy ID 83650. In the County of Owyhee, State of Idaho, First American Title Insurance Company by Alliance Title Company, its duly authorized agent, as trustee on behalf of New Centruy Mortgage Corporation will sell at public auction to the highest bidder, for cash, in lawful money of the United States, all payable at the time of sale, the following described real property, situated in the County of Owyhee, State of Idaho, and described as follows: A parcel of land being a portion of the east one-half of the northwest quarter of section 28, township 3 north, range 4 west, Boise Meridian, Owyhee County, Idaho and being more particularly described as follows: Commencing at a found brass cap marking the northwest corner of said section 28, township 3 north, range 4 west, Boise Meridian, Owyhee County, Idaho and being the centerline intersection of Dunlap Street and Edison Street, said brass cap bears north 0 degrees 00' 00" east, 2666.85 feet from a found 5/8" iron pin marking the west quarter corner of said section 28 and being the centerline intersection of said Edison Street and Bruneau Highway; thence south 88 degrees 52' 33" east, 1996.52 feet along the north boundary of the said northwest quarter of section 28 and along the centerline of Dunlap Street

to a found 5/8" iron pin; thence south 01 degrees 06' 45" west, 1315.59 feet along the centerline of an existing concrete irrigation ditch to a point, said point being witnessed by a found 1/2" iron pin which bears north 89 degrees 09' 40" west, 5.00 feet; thence north 89 degrees 09' 40" west, 329.12 feet to a set 1/2" iron pin, said pin marking the real point of beginning; thence south 0 degrees 34' 46" west, 674.44 feet to a set 1/2" iron pin lying on the south boundary of the north one-half of the southeast quarter of the northwest quarter of said section 28; thence north 89 degrees 09' 40" west, 319.85 feet along said south boundary of the north one-half of the northwest quarter of section 28 to a found 5/8" iron pin marking the southwest corner of the said north one-half of the southeast quarter of the northwest quarter of section 28; thence north 0 degrees 02' 49" east 674.50 feet along the east boundary of the said east one-half of the northwest quarter of section 28 from a found 5/8" iron pin marking the northwest corner of the said one-half of the southeast quarter of the northwest quarter of section 28; thence south 89 degrees 09' 40" east, 326.2 feet to the real point of beginning. Together with that certain 60.00 foot wide easement for ingress, egress, utility and irrigation maintenance as described as easement description, no. 6 in document entitled "Correction affidavit, Louck's Property division no. Tow), recorded February 7, 1997 as instrument no. 220920 and as shown as existing 60' wide easement no. 6 and no. 13 on the record of survey for Les and Lavada Loucks, recorded November 24, 1997 as instrument no. 223375, all in the Owyhee County records. The Trustee has no knowledge of a more particular description of the above referenced real property, but for the purposes of compliance with section 60-113 Idaho Code, the Trustee has been informed that the address of: 6057 Claytonia Way Marsing,

ID 83639, is sometimes associated with the said real property. Said sale will be made without covenant or warranty, regarding title, possession or encumbrances to satisfy the obligation secured by and pursuant to the power of sale conferred in the Deed of Trust executed by: Kenneth D. Park and Shawna M. Park, husband and wife, As grantor(s), To: First American Title Insurance Company by Alliance Title Company, Its duly authorized agent, as successor Trustee, for the benefit and security of New Century Mortgage Corporation, as Beneficiary, dated 3/22/2004, recorded 3/26/2004, as Instrument No. 247219, records of Owyhee County, Idaho. Please Note: The above Grantors are named to comply with section 45-1506(4)(A), Idaho Code. No representation is made that they are, or are not, presently responsible for this obligation set forth herein. The Default for which this sale is to be made is the failure to pay when due, under Deed of Trust and Note dated 3/22/2004. The monthly payments for Principal, Interest and Impounds (if applicable) of \$943.68 due per month from 9/1/2004 through 4/28/2005, and all subsequent payments until the dates of sale or reinstatement. The principal balance owing as of this date on the obligation secured by said Deed of Trust is \$129,773.08, plus accrued interest at the rate of 7.875% per annum from 8/1/2004 All delinquent amounts are now due, together with accruing late charges, and interest, unpaid and accruing taxes, assessments, trustee's fees, attorney's fees, and any amounts advanced to protect the security associated with this foreclosure and that the beneficiary elects to sell or cause the trust property to be sold to satisfy said obligation. Dated: December 28, 2004 By: First American Title Insurance Company By Alliance Title Company, Its Duly Authorized Agent Les Poppitt P224951.  
1/5,12,19,26/05

## Score a Home Run!



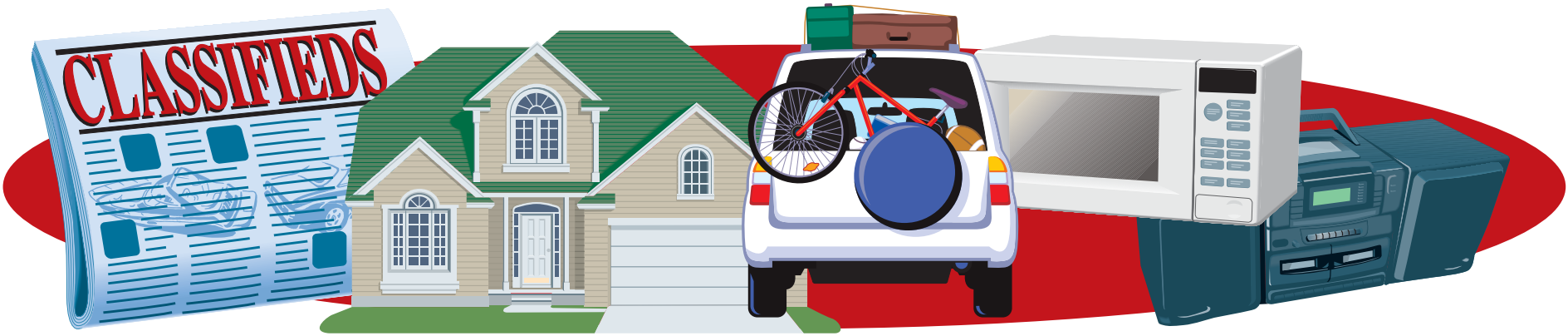
Something you'd like to sell? A lot of "somethings" to sell? You can start a run of eager buyers on your home when you advertise your yard, porch, or garage sale in our Classifieds.

Turn "old" into "gold" by selling all those unwanted items fast!

**337-4681**

The Owyhee Avalanche





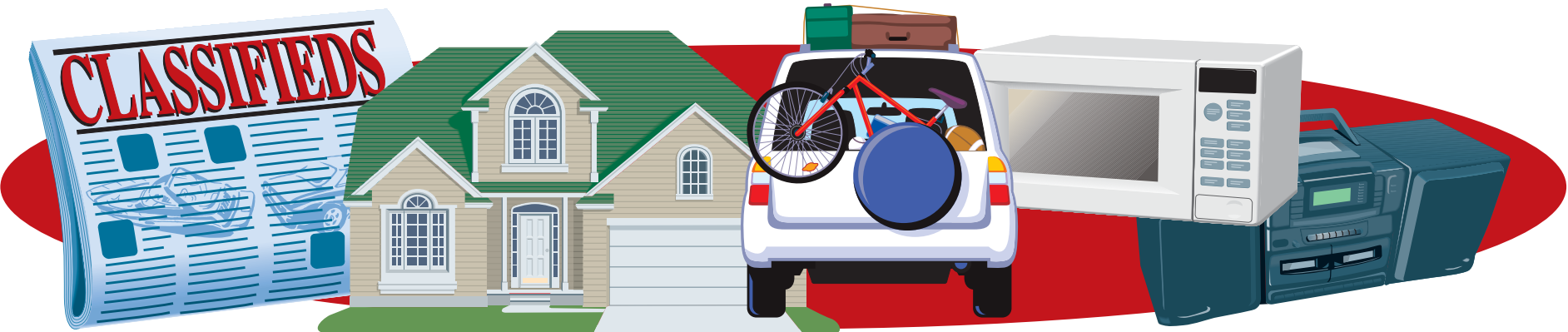
# THE BUSINESS DIRECTORY

CERTIFIED LOCKSMITH	ELECTRICIAN	SAND & GRAVEL	ELECTRICIAN	ACCOUNTING				
 <b>HARVEY'S AUTO PARTS</b> LOCKSMITH & TOWING KEYS MADE • LOCKS REPAIRED EMERGENCY OPENINGS 211 MAIN ST. MARSING, ID • 896-4643	<b>H&amp;H ELECTRIC</b> Serving Owyhee County for 25 years <b>Jeff Haylett</b> <b>337-4881</b>	 <b>Owyhee Sand, Gravel &amp; Concrete</b> 337-5057 573-2341 • 573-2343 • 573-2339 HOMEDALE, IDAHO ALL TYPES OF ROCK & DIRT STATE CERTIFIED DRAIN ROCK FREE ESTIMATES ON ROADS & DRIVEWAYS <i>Chuck, Ray &amp; Bill Maxwell</i>	 <b>Pioneer Electric</b> Commercial, Residential, Industrial, Service Providing you courteous and quality service 24 Hour Emergency Service Ahmad Gholangi Office - 495-2379 C-31391 Cell - 850-3270	 <b>BOWEN &amp; PARKER</b> <b>Mikeal D. Parker, CPA</b> • 19 E. Wyoming • P.O. Box 905 • Homedale, ID 83628 <b>337-3271</b> <b>Ron V. Bowen, CPA</b> • 624 16th Ave S. • P.O. Box 41 • Nampa, ID 83653 <b>467-6900</b>				
CARPENTRY	HAIR • NAILS • TANNING	CHIROPRACTIC	SPORTING CLAYS	HOME CARE				
I HAVE JUST MOVED MY BUSINESS TO WILDER. WE'VE BEEN SERVING CANYON COUNTY FOR THE PAST 11 YEARS. WE WELCOME YOUR BUSINESS. CALL FOR FREE ESTIMATES. NO JOB TOO SMALL. <b>BOB PAASCH 482-7204</b> BOB'S CARPENTRY	 <b>The Hair Depot</b> <i>Chris Bahem</i> 102 E. Wyoming • Homedale (Just East of Paul's Market) 208-337-HAIR (4247) Hair • Nails • Tanning	<b>Marsing CHIROPRACTIC</b> Dr. Kathleen Mckay-Zahedi OPEN MOST SATURDAYS Normal office visits: \$25 Walk-ins welcome! Back to work and play fast! Office 208-896-5520	 <b>IDAHO SPORTING CLAYS</b> <b>337-4826</b> 3 Miles south on Hwy. 95 from Homedale, turn West on Graveyard Point rd., go 4 miles and turn South on Sage. Go over the first hill and we're on the left. GIFT CERTIFICATES AVAILABLE	<i>A Special Touch</i> <b>Home Care, Inc.</b> <i>In YOUR Home Care</i> Licensed Staff • Medicare Medicaid • Private Pay 216 W. Idaho PO Box 933 Homedale, ID 83628 (208) 337-5343				
SIDING CONTRACTORS	ADVERTISING	BED LINERS	AUTO BODY	COMPUTER REPAIR				
<b>MGM Siding Contractors</b> <i>William T. Bruce</i> 1024 W. Finch Dr. Nampa • 465-0214 • Fax 465-9831 Vinyl, Steel & Aluminum Siding Vinyl Windows  <b>BALCOA Master Contractor</b> Craftsmanship You can Trust	<b>YOUR AD HERE!</b> <b>\$10.00 PER WEEK</b> <b>OWYHEE AVALANCHE</b> <b>337-4681</b>	<i>Quality work from start to finish</i> <b>Auto Body by Alan</b> Auto Glass • Frame & Unibody Repair • Collision Repair • Custom Paint • All Work Guaranteed <b>Alan Bahem</b> Rt. 1, Graveyard Pt. Rd. Homedale, ID 83628 (208) 337-4837 Mobile 250-4837	 <b>AA PC REPAIR</b> Tired of your computer not working right? I will come to your home! Competitive Rates • Industry Certified "Outstanding Service" Homedale, Idaho 695-7868	CHIROPRACTIC	CHIROPRACTIC	HEALTH SERVICES	HEALTH SERVICES	DENTAL SERVICES
<b>HOMEDALE CHIROPRACTIC CENTER</b> J. Edward Perkins, Jr. D.C. 111 S. Main - Homedale - 337-4900 <i>Your Pain and Wellness Clinic</i> • Low Back Pain • Carpal Tunnel Syndrome • Leg Pain • Whiplash/ Car Accident Injuries • Neck Pain • Work Injuries • Headache Pain • Sports Injuries • Shoulder Pain • Custom Orthotics (Shoe inserts) Call 208/337-4900 for a Free Consultation	<b>Homedale Clinic</b> Terry Reilly Health Services <b>Chip Roser, MD</b> <b>Richard Ernest, CRNP</b> <b>Janine Franco, PA</b> 108 E. Idaho, Box 1058 Homedale, Idaho 83628 <b>337-3189, Night 466-7869</b> Mon., Wed., Thurs. & Fri. 8:30 - 5:00 Tuesday 8:30 am - 9:00 pm	<b>Marsing Clinic</b> Terry Reilly Health Services <b>Faith Young Peterson, CRNP</b> Family Nurse Practitioner <b>Chip Roser, MD</b> <b>Janine Franco, PA</b> 201 Main Street, Marsing, Id. 83639 <b>896-4159, Night 466-7869</b> Mon., Tues., Wed., & Fri. 8:30 - 5:00 Thursday 8:30 am - 9:00 pm	<b>Homedale Dental</b> Terry Reilly Health Services Eight 2nd Street West, Homedale, Idaho 83628 <b>337-6101</b> <b>Ronald Fife, DDS</b> Monday - Thursday 8:00-1:00/2:00-5:00 Accepting Emergency Walk-Ins Daily We Accept Medicaid					
ADVERTISING	ADVERTISING	CONCRETE	ADVERTISING	CONSTRUCTION				
<b>YOUR AD HERE!</b> <b>\$10.00 PER WEEK</b> <b>OWYHEE AVALANCHE</b> <b>337-4681</b>	<b>YOUR AD HERE!</b> <b>\$10.00 PER WEEK</b> <b>OWYHEE AVALANCHE</b> <b>337-4681</b>	<b>Ray Jensen</b> You want <b>CONCRETE?</b> I'll do it any way you want it. 25 Years Experience • Wilder cell: 899-9502 home: 482-7757 rayjsconcrete@cs.com	<b>YOUR AD HERE!</b> <b>\$10.00 PER WEEK</b> <b>OWYHEE AVALANCHE</b> <b>337-4681</b>	<b>R<sup>BAR</sup>S CONSTRUCTION</b> Land Leveling • Earth Moving Fields • Ponds • Roads Building Sites 22026 Market Road Parma, Idaho Robert Shippy Rob Shippy 208/722-6727 208/722-6122				

# The Owyhee Avalanche

Owyhee County's best source for local news!!





**REAL ESTATE**  
For sale: 2 occupied rental homes. 312 3<sup>rd</sup> St. for \$50,000 and 407 2<sup>nd</sup> St. for \$55,000. Both in Wilder, ID. For appointment to see inside call Mary, Nova Realty, 896-4195 or evenings at 896-5121.

**READY TO MOVE IN**  
**HOMEDALE'S NICEST MOBILE HOME PARK**  
• 2 br/1 ba Built-ins, Central Air Only \$200/mo.  
• 3 br/2 ba 1999 LIKE NEW Beautiful inside & out! Only \$250/mo.  
(Homes to remain in Park)

**Sunset Village**  
Mobile Home Park  
401 S. Main • Homedale, Idaho  
See Tom - space #42  
**(208) 337-5804**  
(208) 884-1700

- Bruneau**  
• 320+/- ac. w/ 215+/- ac. wet. Reduced to \$285,000  
• 390+/- ac. 260+/- ac. in alfalfa. natural hot water, 2 ponds. Owner may carry w/ 25% down. OAC \$450,000
- Caldwell**  
• 78.9 +/- ac. w/ 1/2 mile Snake River Frontage, crop & pasture ground. \$946,800
- Grand View**  
• 385+/-ac. Cattle ranch w/ 2 homes \$967,000  
• 640+/-ac. w/ 2 mile Snake River Frontage. 2 homes, end of road privacy. \$1,520,000  
• 900+/- ac. low elevation, row crop. NOW \$2,300,000  
• 1,280+/-ac. Farm w/ pivots. 2 homes & storage bldg. \$1,824,000
- Melba**  
• 70,000+/-ac., rated at 875 AU's. Several Homes. Snake River Frontage. \$4,000,000

**OTHERS... CALL FOR FREE CATALOG**



www.knipeland.com  
CALL: 208/345-3163

**FOR RENT**  
New home! Homedale 3 bdrms, 2 bth, 2-car garage w/appliances. No pets! SICHA ok! \$750 mo + deposit. Superior Prop. Mgnt. 455-0733

**Wilder Housing Authority** has rental units available at Chula Vista. These are partially furnished 2 and 3 bedroom units. Rent is from \$335 mo. to \$365 mo. This includes water/sewer/trash and lawn care. For more information call 208-482-7750 or come to the office at the corner of Hwy 95 and Hwy 19 on the south side of Wilder, P.O. Box 685, Wilder, ID 83676. We do business in accordance with Federal Fair Housing Law.

**2 bdrm house** for rent \$400 mo + \$100 dep. 516 West Oregon St., Homedale. 337-4240 or 573-8994

**Older 2 bdrm** recently remodeled – new paint, carpet & appliances. Lg. shop included. \$425 or \$400 w/12 mo. lease + deposit. 337-3857 or 250-0720

**Homedale 2 bed 1 bth** in town, large yard, new carpet & paint \$425 + \$300 dep. 841-5082 or 455-9473

**Marsing 3 bed 1.5 bth**, fenced yard, either furnished or unfurnished \$550 mo. + \$300 dep. 989-4868

**5x10 unit available, RV & boat storage**, Marsing Storage 343-9855 or 867-2466

**Older 2 bdrm** recently remodeled – new paint, carpet & appliances. Lg. shop included. \$425 or \$400 w/12 mo. lease + deposit. 337-3857 or 250-0720

**Homedale 2 bed 1 bth** in town, large yard, new carpet & paint \$425 + \$300 dep. 841-5082 or 455-9473

**Marsing 3 bed 1.5 bth**, fenced yard, either furnished or unfurnished \$550 mo. + \$300 dep. 989-4868

**5x10 unit available, RV & boat storage**, Marsing Storage 343-9855 or 867-2466

**FARM AND RANCH**  
For sale: Alfalfa hay 60 ton. 2<sup>nd</sup> and 3<sup>rd</sup> cuttings. \$65 per ton. Phone 337-3471 evenings.

**HOMEDALE GARDEN APARTMENTS**  
**APARTMENTS ARE AVAILABLE**  
FOR SENIOR CITIZENS and/or HANDICAPPED OR DISABLED PERSONS  
**RENT BASED ON INCOME**  
USDA/RURAL DEVELOPMENT FINANCED  
COME IN OR GIVE US A CALL: (208)337-4715  
409 S. 1st st. W.  
HOMEDALE, IDAHO 83628

**FOR SALE**  
**Quilters! Cut pieces** – squares, rectangular, strips for warm comforters & rugs. Many dark colors. You Sew – machine quilting available. 208-896-4656

**Guns:** Beretta 92FS, Ruger 44 with 2x, Yugo SKS \$150, 22LR combo \$100, 22LR 9 shot DA \$100, 12 GA \$90, 20 GA \$60, others, 896-5060 leave msg, Dan.

**Fabco pellet fire place** insert, works great, chimney pipes included \$350 or best offer. Call 896-5089

**Used tractor parts** 100's of salvaged farm tractors and combines. Nampa Tractor Salvage, 9055 Hwy 20, Nampa, ID 83687 (208) 467-4430

**Roll ends:** Great for packing material, building fires, lining bird-cages or for your kids to doodle on. The Owyhee Avalanche, Homedale

**Italian leather couch and love-seat.** Brand new still wrapped in plastic. Retail \$2450. Must sell \$895. 208-888-1464

**Bedroom set 5-piece cherry set.** Brand new in box. List \$1450. Must sell \$399. 208-888-1464

**Bed-queen pillowtop mattress set.** Brand new, still in plastic. Must sell \$159. **Queen orthopedic set.** Brand new, must sell \$129. 208-866-7476

**King-sized pillowtop mattress set.** New, in bag, with warranty. Must sell \$199. 208-866-7476

**Cherry Sleigh bed.** Solid wood. New in box. Value \$850. Sacrifice \$295. 208-888-1464

**Fun piano, guitar & violin lessons.** All ages 3 to 100. All levels beginning thru advanced accepted. Private lessons with professional instruction. Affordable monthly rates. Please call 467-6244

**Used tractor parts** 100's of salvaged farm tractors and combines. Nampa Tractor Salvage, 9055 Hwy 20, Nampa, ID 83687 (208) 467-4430

**Roll ends:** Great for packing material, building fires, lining bird-cages or for your kids to doodle on. The Owyhee Avalanche, Homedale

**Italian leather couch and love-seat.** Brand new still wrapped in plastic. Retail \$2450. Must sell \$895. 208-888-1464

**Bedroom set 5-piece cherry set.** Brand new in box. List \$1450. Must sell \$399. 208-888-1464

**Bed-queen pillowtop mattress set.** Brand new, still in plastic. Must sell \$159. **Queen orthopedic set.** Brand new, must sell \$129. 208-866-7476

**King-sized pillowtop mattress set.** New, in bag, with warranty. Must sell \$199. 208-866-7476

**Cherry Sleigh bed.** Solid wood. New in box. Value \$850. Sacrifice \$295. 208-888-1464

**Fun piano, guitar & violin lessons.** All ages 3 to 100. All levels beginning thru advanced accepted. Private lessons with professional instruction. Affordable monthly rates. Please call 467-6244

**Subscribe today!**

and have  
The  
Owyhee Avalanche  
delivered  
to your home  
each week!

**337-4681**

  
P.O. BOX 97 • HOMEDALE, IDAHO 83628

**JW Sharpening Service**  
**Small Engine Repair**  
**208-337-3556**  
Pickup Stations:  
Marsing: Harvey's Auto Center  
Wilder: Wilder Building Center



337-3556

**SERVICES**  
**Looking for daycare?** Give Cathy a call at 337-5453. Clean safe environment.

**Daycare w/fenced yard**, large play areas & close to school. Now available. Call Stacey Muir @ 337-6188

**M&S Repairs & Remodels.** All types of remodeling & construction, plumbing, fencing, roofing & add-ons. New homes & older homes. Call 337-5041 for estimate.

**JJ Excavation and Hauling,** TOP SOIL, and gravel delivery, excavator and trucks for hire. Road building, dozer, water truck and road grader. Free estimate. 208-337-4822 or 573-5700.

**Dump Truck & Back hoe** service, ditch cleaning & demolition. Call Steve at 465-5196 or 371-4285.

**Best price in the valley for on-site computer** cleaning and repair. Call Tom or Colette at 208-899-9419, Technical Computer Cleaning.

**Tim's Small Engine Repair:** Complete servicing & repair available on lawnmowers, tillers, wheel-line motors, motorcycles, ATVs, all 2 & 4 cycle power equipment. Karcher pressure washer factory authorized repair center. 30916 Peckham Rd., 5 miles west of Wilder. 482-7461

*Have a news tip?*

Call us!  
**337 4681**

**VEHICLES**  
1996 Polaris snowmobile. 600cc triple. Less than 1,000 miles, top shape. First \$2,400 takes it. 337-4681 or 337-3149 eves.

**HELP WANTED**  
**Dental Assistant.** FT in Homedale. Benefits incl. health, dental, disability, pension. Bilingual (English/Spanish) ability preferred. Complete application at or send resume to: Terry Reilly Health Services, 211 16<sup>th</sup> Ave. N., P.O. Box 9, Nampa, ID 83653. EOE.

**CDL truck driver** needed, local company \$10 hr. Call Ed 573-2133

**THANK YOU**  
We would like to thank all of our friends, family and community for all of the cards, flowers, food, thoughts and prayers before and after our loss. The Family of Debbie Kline

On behalf of myself & my family I would like to offer humble & heartfelt thanks to everyone for the tremendous outpouring of love, prayers, cards, flowers, food & visits. All your kindnesses will not be forgotten. It's so wonderful to have such good friends & family & Homedale is the best place in the world to live. Thank you All! God Bless You. Marsha & Allen Hays, Josh, Tammy & Hunter Hays, Lucas & Yolanda Hays

A special thanks...to all of our friends and family. We would like to thank all of you for everything you have done for us in our time of sorrow. You have truly outdone yourselves. Each one of you touched Donnie's life in your own special way, ways that will never be forgotten. He will always be in our hearts and memories. Once again, thank you from the bottom of our hearts. The Liddell Family. Vi, Candice, Sherry, Shelly, David, Dominic, Destiny, Jeffrey, and Joey

For FAST results...  
try the  
*Classifieds!*

**COLDWELL BANKER**

**ASPEN**  
**GEORGE WILSON**  
**JOHN CONTI • STAN CAPOUCH**  
OFFICE: 896-5312  
GEORGE: 573-6405 • JOHN: 880-7829 • STAN: 880-2414  
View Properties At: www.idaholand4u.com

**REDUCED TO SELL**

1100 sq. ft. near new mfh. New kitchen & remodeled throughout. Located in RV Park on Snake River. Terms - \$29,900

1340 sq. ft. 3 or 4 bed, 2 bath on 1.87 ac. Horse barn, shop & Hay storage bldg. Water rights. Seller will pay closing costs and carpet allowance. \$98,000

3 AC - Water, Power \$25,000  
4 AC - Water and power on road. \$35,000  
5 AC - Water and power on road. \$45,000

**ANNUAL OPEN CONSIGNMENT MACHINERY AUCTION**  
**ALL EQUIPMENT SOLD "AS IS"**  
**Sat., Feb. 12<sup>TH</sup> 10 a.m.**

**Marsing, ID.**  
**Next to Bowman Packing Shed**  
**By old Railroad Crossing**  
**Selling Tractors, Trucks, Pickups, All Farm Equipment, Construction Equipment & Irrigation Equipment**

**ANYTHING OF VALUE**  
**Turn Your Unused Equipment Into Ready Cash.**  
**Call Early To Have Your Consignments Advertised...**  
**FOR BEST RESULTS...**  
**SELL THE AUCTION WAY!**  
**AL OSMUS & ASSOCIATE AUCTION SERVICE**  
**(208) 459-6525**





# Snake River Mart



## Winter Sales Event

Boneless Skinless  
**Chicken Breast**



**\$1.89**  
lb.

Chicken  
**Drums or Thighs**



**59¢**  
lb.

**Bananas**



**29¢**  
lb.

50 lb.  
**Yellow Onions**



**\$5.99**  
ea.

**T-Bone Steak**



**\$4.99**  
lb.

Western Family  
**Cream Cheese**



**89¢**  
ea.  
8 oz.

**Idaho Potatoes**



**\$1.79**  
ea.  
10 lb. Bag

**Mangos**



**59¢**  
ea.

Western Family 8 oz.  
**Shredded Cheese** **\$1.69** ea.  
Western Family 16 oz.  
**String Cheese** **\$3.99** ea.  
Big Buy 16 oz.  
**Bacon** **3 for \$5**

Gold N' Plump  
**Whole Fryer** **\$2.99** ea.  
Western Family 48 oz.  
**Fish Sticks** **\$5.99** ea.  
John Morrell  
**Bone-In Ham Butts** **\$1.39** lb.

**Red Potatoes** **39¢** lb.  
**Green Bell Peppers** **3 for \$1**  
**Cucumbers** **4 for \$1**

**Tomatoes** **99¢** lb.  
Dole  
**Romaine Salad Mix** **99¢** ea.  
All Apples-Oranges-  
**Tangerines-Pears** **69¢** lb.



Western Family  
**Cereal**

**2 for \$4**

Asst'd Flavors & Sizes

Western Family 36-39 oz.  
**Coffee** **\$2.99** ea.

**Coca Cola Products**



**\$3.99**  
ea.

12 Pack Cans

2 Liter Bottles  
**Coca Cola** **\$1.29** ea.

Betty Crocker  
**Hamburger-Tuna-  
Chicken Helper**



**2 for \$3**

Golden Grain  
**Rice A Roni & Past Roni** **5 for \$5**

**Coors Beer  
Reg/Light**



**\$6.99**  
ea.

12 Pack Bottles

24 Cube  
**MGD Regular/Light** **\$15.99** ea.

Dasani  
**Water** **2 for \$7**  
12 ct. Fridge Pack

Campbell's  
**Chicken Noodle Soup** **59¢** ea.  
10.75 oz.

Western Family  
**Frozen Waffles** **99¢** ea.  
12.3 oz.

Tostitos  
**Tortilla Chips** **2 for \$5**  
12-13.5 oz.

Kraft  
**Macaroni & Cheese** **69¢** ea.  
7.25 oz.

Dinty Moore  
**Beef Stew** **\$2.19** ea.  
24 oz.

Post  
**Cereals** **3 for \$6**  
Asst'd 13-16 oz.

Alpo  
**Dog Food** **5 for \$3**  
13.2 oz.

Betty Crocker  
**Potatoes** **4 for \$5**  
Asst'd

Western Family  
**Laundry Detergent** **\$5.99** ea.  
30 lb.

Lay's  
**Potato Chips** **2 for \$4**  
11.5-12 oz.

Arrowhead  
**Water** **\$5.99** ea.  
24 Pack

Western Family  
**Pasta** **3 for 99¢**  
12 oz.

Dinty Moore  
**Beef Stew** **\$1.19** ea.  
15 oz.

Captain Crunch  
**Cereal** **4 for \$10**  
15-16 oz.

General Mills  
**Cheerios** **\$2.59** ea.  
15 oz.

SRM COUPON

**Arrowhead  
Water**

24 Pack **\$1 off**

SRM COUPON

**Yellow  
Onions**

50 lb. Bag **\$1 off**

**Featured  
Wine of the Month  
Sawtooth 2003 Riesling**

**50¢ off**

**Enter to Win A  
Super Bowl  
Party.**

Details at store.

**HOURS: Mon. - Sat. 6:00 a.m. to 10:00 p.m. - Sunday 7:00 a.m. to 9:00 p.m.**

**Marsing, Idaho**

**WE RESERVE THE RIGHT TO LIMIT QUANTITIES AND CORRECT PRINTED ERRORS • PRICES EFFECTIVE 1/12/05 thru 1/18/05**