

The Owyhee Avalanche

VOLUME 20, NUMBER 36

HOMEDALE, OWYHEE COUNTY, IDAHO

SEVENTY-FIVE CENTS

Marsing Dist. passes emergency levy

The Marsing School District approved the passage of an emergency levy due to an increase in students and a decrease in state funding. District Superintendent Harold Shockley said last week that the average daily attendance is up by nearly 70 students.

The levy has to be passed before the second Monday in September, which was this week. The board of trustees had to compute the number of pupils in average daily attendance, ADA, in the schools in the district. If the ADA is above the number in ADA for the same period of the preceding school year, the board may pass the levy.

"Last year the state said that Marsing had an annual average ADA of 697.01 students," Shockley said. "As we looked at the first 10 days of this year, we have 765.60 students. If we actually look at the ADA for the first 10 days last year, we had 710. This year we have 766 by comparing apples to apples. That is a substantial number up. What that would give us off of the state support program allowance is \$3,089,892."

— to page 5



Flight from space

Jets follow Genesis, a space capsule that was scheduled to return to earth Wednesday, across Owyhee County skies. Officials had planned to intercept the capsule before it hit the ground in Utah, but an explosive charged parachute did not open sending the modular plummeting to the ground.

Open house, rodeo slated for weekend

Silver City homes opened to public

The "Queen" of Idaho's ghost towns will come to life this weekend during the annual Silver City open house. The two-day event will take place throughout the town from noon until five on both days.

Ten buildings will be open to the public for tours. Tickets will be available for \$10 for adults and \$5 for children under 12. Ticket sales will be by donation from 12 p.m. until 4 p.m. both days.

— to page 2

Rodeo action begins in Bruneau Saturday

The annual Bruneau Round Up will be held at the Bruneau Rodeo grounds on Saturday and Sunday. The rodeo will begin at 12:30 p.m. followed by a barbecue on Saturday at 5 p.m. at the American Legion Hall.

A dance will be held Saturday night at the park with music by the Jeff Palmer band. A breakfast will be served at the Legion Hall on Sunday from 7:30 a.m. until 11 a.m. before the rodeo.

— to page 5

City rejects county lease proposal

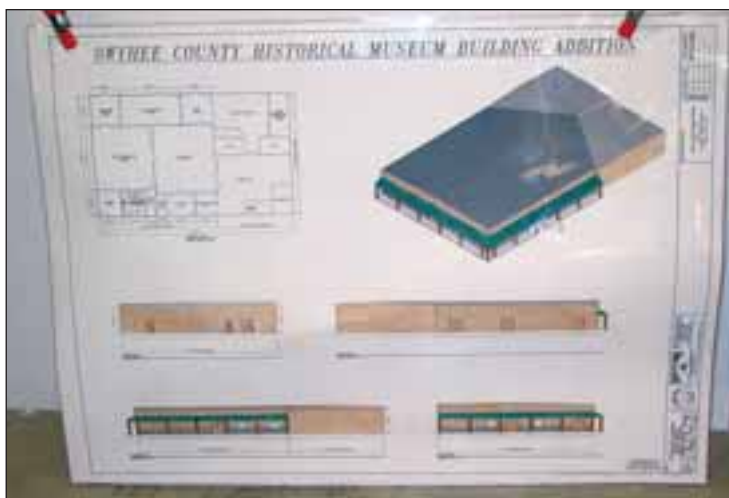
Marsing council accepts agreement

Homedale City Council rejected a proposal for a lease agreement from the county in which the county would pay the city \$6,000 to house the District Courtroom in city hall. The City of Marsing accepted the agreement, which will give them \$4,560 for the Department of Motor Vehicles and an office for county deputies who provide law enforcement for the city.

In response to several requests from city leaders to assist in the costs of the departments, county commissioners asked the two cities to agree to a lease and take care of the offices instead of the county sending money for the up-keep.

For several years, the city of Homedale has discussed having the county help with remodeling the county's courtroom. Several times the county has agreed and has budgeted several different amounts, but the courtroom remains un-remodeled.

Last month, city officials from Marsing requested the county share expenses for its DMV office located in city hall and assist



A rendition of the future look of the Owyhee County Historical Museum in Murphy is on display in the museum. Ground breaking for the new addition is scheduled to take place Friday evening at the site.

Ground-breaking planned for museum expansion

On Sept. 17 at 7 p.m. the ground will be broken for an expansion of the Owyhee County Historical Museum in Murphy. The capital campaign has raised nearly half of what will be needed for the museum to add a 6,000-foot building connected to the current museum. It will have eight additional rooms added to the six-room building now with a multipurpose room complete with kitchen facilities for banquets and family gatherings.

It will also have a library, shop, artifact storage area, two vaults, gift shop and an office for the director.

Director Thomas Couch said

many dignitaries have been invited to attend and he has also sent invitations to the original group who dedicated the original museum nearly 40 years ago. He said he is searching for a photograph of the original ground breaking. He said he is also searching for photos of the charter members of the museum.

The campaign needs to raise about \$600,000 for the project and currently they have raised nearly \$300,000 from cash and in-kind donations, grants, fundraisers and pledges. Couch said the committee realized it would take about three to five years to raise the funds and complete the

project.

"That will include the landscaping for everything," Couch said. "We have a grant from US Ecology. Money from an anonymous donation and a pledge from Marsing alumni. We also received a very large donation from the McKeith estate. We still have some monies trickling in."

Couch said he spoke to the class of 1954 in Homedale over the summer and they are also considering making a donation and making a challenge to other Homedale alumni. He said several contractors have also donated work to the project.

— to page 5

Fair board seeks
comments
page 3

Sports
pages 10-11

Homedale man publishes
Sci-Fi novel
page 6

From page 1



Silver City open house

The town of Silver City will welcome guests this weekend during the annual Silver City Open House. Ten structures will open their doors to guests on Saturday and Sunday.

✓ **Silver City**
The annual event is held to help raise funds for a full-time watchman to protect the existing buildings from vandalism and fire. The watchman is paid on a voluntarily basis by the homeowners of Silver City.

All the buildings in Silver City are privately owned, many by the descendants of the original families. Silver City is not an abandoned town and function coordinators ask the public to respect private property by not trespassing.

The town has limited food service, snacks and drinks at the Idaho Hotel and coordinators said prior reservations are wise. Pat Nettleton’s Pat’s What Not Shop will be open and has many gifts and souvenirs. Public restrooms are available.

Picnic planned to help cancer victim

Members of the Homedale Friends Community Church will host an old fashioned picnic in the park Sept. 19 at 1 p.m. The gathering is a fundraiser to help offset rising medical costs for the Pastor’s wife who suffers from cancer.

The Root Family at the City Park will provide musical entertainment. Picnic games and a bake sale will also be available for those who attend.

Coordinators said if the weather is not acceptable for an outdoor picnic, the benefit would not be canceled, it would be moved to the Homedale Elementary School. Times will remain the same.

The ticket cost is \$5 for adults and \$3 for kids 3-11. Donations can be made by sending checks to “Martha Beck,” Box 95, Homedale, Idaho 83628. For more information, call 337-3464 or 337-6073.

Sunnydale Motel

Homedale

(Near U.S. Bank)

Clean • A/C • Fridge • Microwave • Cable Television

Natural Atmosphere • Low Rates

Monthly & Weekly Rates Available

Phone: (208) 337-3302

Cooky's

"Famous Potato" House

NEW LUNCH SPECIALS! \$4.99

Choose from 2 lunch specials daily, Monday through Friday, drink included.

PRIME RIB SPECIAL EVERY FRIDAY & SATURDAY NIGHT!

MONDAY - THURSDAY 11 AM - 8 PM

FRIDAY: 11 AM - 9 PM

SATURDAY: 7 AM - 9 PM

SUNDAY: 9 AM - 8 PM

ENJOY OUTSIDE DINING IN OUR "GARDEN OF EATIN' "

DINE IN • TAKE OUT • CATERING

14949 SUNNYSLOPE ROAD

HIGHWAY 55 IN SUNNYSLOPE

459-8200

BETWEEN MARSING AND NAMPA

HMS launches subscription drive to raise funds

Reading your favorite magazines, listening to new CDs and using common computer programs can translate into dollars for Homedale Middle School.

The middle school launched its annual subscription drive on Tuesday. Students in grades five through eight kicked off selling and renewing subscriptions to over 800 different magazines as well as selling a variety of music CDs and computer CD-ROMs with an assembly on Tuesday. The drive runs through Sept. 24.

The program gives 40 percent of the subscription funds to the school. The school will reward students with a variety of prizes for their sales during the fundraiser. The school will put the funds toward general school needs.

Students will also sell and renew subscriptions to the *Owyhee Avalanche*. The paper will donate 25 percent of all subscription sales to the school.

Murphy Country Market opens Saturday

The first ever Murphy Country Market will be held Saturday and Sunday from 10 a.m. to 5 p.m. each day. The market will be held at the Pie Shop near the Owyhee County Museum and a portion of the proceeds will be donated to the Owyhee Historical Society.

Coffee will be served and old time country music will be performed. Antiques, collectibles, crafts, furniture, sporting goods, tools, southwestern jewelry and arts, gourds and body lotions, fresh produce, yard sale items, food vendors and homemade treats will be offered for sale.

For more information contact Vikki Tyson at 834-2077.

Owyhee Reservoir update through Sept. 13

As of Monday, Owyhee Reservoir contained 122,625 acre-feet of water, which is 17 percent of full. One hundred seventeen cubic feet per second is entering the reservoir at Rome and 180 CFS is being released at the dam.

Thank You

to our many friends & customers who came to see us during Labor Day weekend!!! Your response to our sale was overwhelming and we are grateful for your support and your kind words of encouragement. Although some items are now gone, lots of trees and shrubs are still available and the sale prices will save you money. New specials every week as we continue our

“Going Out of Business” SALE

Quentin & Shirley at

River's Edge Nursery, LLC

18039 Fish Road, Wilder, ID

Open Saturdays and Sundays 8-5

Fair board seeks comments on boundary restrictions

On Oct. 7, the Owyhee County Fair Board will hold its regular monthly meeting at the county extension office in Murphy, but this month's meeting should draw in a large crowd as fair board members are asking the public for their comments in a decision to close boundaries for 4-H fair participation.

The board agreed to revise livestock sale rules to exclude out of county 4-Hers that sell their animals at the annual Junior Livestock Sale held every year. The ruling would only allow 4-H kids who live or attend a school located in Owyhee County instead of including kids who attend a school district located in Owyhee County.

Fair board members addressed the issue during a meeting in March where Fair board member Dave Rutan told the board that he had been approached over the issue because of a 4-H club located in Canyon County. Rutan said the 4-H kids live in Canyon County, but the kids attend school in Owyhee County, which allows them to participate in the sale.

"They used to be an Owyhee County club, but last year they got upset and went to the Canyon County side and started their own 4-H club," Rutan said during the March meeting. "Now they are a Canyon County club, Canyon County kids and they still want to show and sell their animals in Owyhee County. Our 4-H program coordinator thinks that is just fine. She said she does not want to discourage any kids from joining 4-H and I agree, but they should be in 4-H in their own county."

Fair board member Kenny Tindall adamantly disagreed with the ruling and has asked the board several times to reconsider. Next month, the board will review the issue.

Fair board chairman Joe Merrick said the fair book rules state: "to exhibit or market livestock in the fair, one must be a 4-H club member living in Owyhee County or attending a school district located partially in Owyhee County."

The board agreed to change the wording of the rule to state, "to exhibit or market livestock in the fair, one must be a 4-H club member living in Owyhee County or attending a school located in Owyhee County."

Tindall argued that the board is splitting the cultures and he did not agree. He said the school district in Bruneau/Grand View pay for the school district in Owyhee Nevada.

The group agreed that the rule

would not take effect for this year's fair, but it would be in effect for the 2005 fair.

"I want to stress that the changes are only for the sale," County 4-H Program Coordinator Tara Rowland said after the ruling. "They can come and show, they just can't sell and the change only effects swine, beef and sheep. They can still bring their animals, but now they can't sell it if they do not live or attend a school in Owyhee County."

Rowland said she has received many calls concerning the change and although she did not attend the fair board meeting, she said she was not pleased with the change.

Rowland said the changes have been made to the ruling and it will read as follows: "To exhibit market livestock for sale at the fair, one must be a 4-H club member living in Owyhee County or attending a school located in Owyhee County."

"It is going to effect quite a few 4-H members," Rowland said. "They new I would not be pleased with this decision."

County Extension Agent Scott Jensen said the boundary issue would be the main topic of discussion at the next fair board meeting.

"The fair board will dedicate their meeting to listening to interested persons about the issue," Jensen said. "The format will be similar to a public hearing. Each individual who wishes to speak will sign in. They will have up to three minutes before the fair board to state their thoughts on the issue. The fair board members will then have the opportunity to ask questions. Written comments can also be submitted from individuals not wishing to speak publicly. The fair board has expressed to me that what they want to hear are solutions, not sob stories. Please consider that as you prepare your comments."

The fair board will issue a final decision at their November meeting.



Stormy sunset

Cloudy skies made for a beautiful sunset over the Owyhee Mountains Sunday evening. Temperatures are expected to continue to drop through the week and remain below normal.

Cold front dumps rain in valley

A cold front moved into the area Sunday morning and brought with it rain, wind and lightening.

Library books available for public sale

The Homedale Public Library will offer books for sale at its fall book sale Saturday from 9 a.m. until 4 p.m. Used books will cost 50 cents per pound.

Library Director Margaret Fujishin said members of the library hope to have most of the books on tables this year for better viewing, but tables are needed. Anyone loaning a table to the library will be able to choose three free books. The tables will need to be at the library by 8 a.m. Saturday and can be picked up at 4 p.m. at which time loaners can choose three more free books.

The library is located at 125 W. Owyhee Avenue.

*Buy it, sell it,
trade it, rent it...
in the
Classifieds!*

Forecasters are predicting cooler temperatures for the remainder of the week including temperatures dropping into the upper 30s by the weekend.

The National Weather Service predicts that Wednesday will be partly cloudy with highs in the upper 50s to low 60s and lows from 40 to 45 degrees through Friday.

Friday night calls for a 20 percent chance of rain and highs in the 60s, but nighttime lows will drop from 42 to 47 degrees. By

Saturday and Sunday, the chance of rain increases to 30 percent with lows 39 to 44 degrees. Temperatures are forecasted to remain 5-10 degrees below normal throughout the week.

**K-9 Country
Clips &
Boston Cuties**

Small dog grooming is now available for the Homedale area. Now taking appointments for the month of Sept. Call JoAnn 337-6133

FRUIT AVAILABLE NOW!

Elberta & O'henry Peaches
\$6.00 1/2 bushel
Gala, Golden, &
Honeycrisp Apples
Garrett Ranches
Homedale Rd.
M-F 9-5 337-3133

AUCTION

Family Farm Days

Vision Bible Church
221 West Main
Marsing, ID 83639
208-896-5407

**Saturday, Sept. 25th
6:00 PM**

To Be Auctioned

Truck Camper	Hay
1-66 Ford Galaxie (Running)	Weed Eaters
1-66 Ford Galaxie (Parts)	Swing Set
Tractor Work	Fax Machine
Antique Truck Scale	DVD Player *NEW*
Pygmy Goats	27in Television
2 Feeder Pigs	Decorative Pocket Knife
Pair of Geese	Rope Vase
Horse Feed Trough	Kitchen Table
Saddle Rack	Jewelry
Dog Food	And Much More!!!
Trio of Chickens	

1997 Chevrolet Van (as is)

2 Cords of Wood

Utility Trailer (newly renovated)

Sale Conducted By:
Osmus Auction Service

Bruneau Round Up

21st Annual Open Rodeo

September 18 & 19, 2004

Rodeo starts at 12:30 pm

BBQ - Saturday 5:00 American Legion Hall
Dance - 9:30 pm Saturday Night at the Park
Music by "Jeff Palmer"
Sunday Breakfast -
7:30 - 11:00 am American Legion Hall

Agencies and watershed scientists to research prescribed fire

Research scientists from Boise’s USDA Agricultural Research Service Northwest Watershed Research Center (NWRC) and Wildland Fire Professionals of the Lower Snake River District BLM, have teamed up to conduct a research prescribed burn on approximately 300 acres of privately owned and 90 acres of BLM land within the boundaries of the Reynolds Creek Experimental Watershed (RCEW), one of the largest research watersheds in the United States. The RCEW is located approximately 50 miles southwest of Boise in the Owyhee Mountains.

“The primary research purposes for the burn are to investigate vegetation and animal behavior responses to fuel reduction/forage improvement and juniper control with prescribed fire,” said Stuart Hardegree, Research Leader with Northwest Watershed Research

Center. “Data from this research could be used to improve similar projects in the western United States where land is, or could be overrun by invasive Western Juniper.”

The date of the burn will be selected when weather conditions coincide with specific parameters established by BLM fire managers to ensure firefighter safety and to maintain control of the burn. The anticipated burn date has been targeted between Monday, September 13 and Saturday, September 18, 2004, weather permitting.

NWRC scientists will conduct Pre and post-burn investigations. BLM wildland fire professionals will implement the burn and post burn control.

BLM to burn tumbleweeds in Bruneau area

Fire crews of the Lower Snake River District BLM will be conducting tumbleweed prescribed burns in various locations throughout the Bruneau Valley, beginning in September and extending into fall to reduce the potential of human-caused fires during summer months.

“Tumbleweeds accumulate throughout the year along roads, fence lines and in draws and canyons,” said Grant Camp, Fuels Module Supervisor for the Lower Snake River District BLM. “These accumulations can pose a serious human-caused wildfire threat during the summer, due to their proximity to roads and recreation areas. Our goal is to reduce that threat by burning the tumbleweeds in the fall, when weather conditions are within acceptable ranges and we can maintain control of the burns.” Camp added that in several locations, tumbleweed accumulations have made roads inaccessible, which they also hope to resolve with the prescribed burns.

As a fine fuel, tumbleweeds are extremely responsive to changing weather conditions. BLM fire management professionals will work over the next few months to monitor weather conditions and take advantage of any opportunities to conduct the tumbleweed prescribed burns.



Genesis space capsule passes over county before crash landing in Utah

Wednesday morning, in a nearly cloudless sky, four trails of “smoke” streaked across the sky over southwest Idaho and directly across Owyhee County. Jets following Genesis, a space capsule that was scheduled to return to earth Wednesday, left the four trails. Officials had planned to intercept the capsule before it hit the ground in Utah, but an explosive charged parachute did not open sending the modular plummeting to the ground.

Reports released from NASA said the Genesis return capsule crashed in the desert on Wednesday after its parachutes failed to deploy. The craft missed a mid-air retrieval meant to save the spacecraft from hitting the earth, and Genesis crashed at approximately 100 miles per hour.

Many folks could see the streaks of what looked to be smoke from four jets that followed the Genesis to its crash landing in Utah. The space modular could not be seen with the naked eye from the county, but the distinctive trail of the jets drew many faces to the sky.

“The capsule has suffered extensive damage. It has broken apart on the desert floor,” said an official on NASA TV. “Hopefully, there will be enough evidence to see what went wrong. Whether there will be enough science left inside remains to be seen.”

Genesis was launched from Cape Canaveral in 2001 and traveled beyond the protective cover of the Earth’s magnetosphere for two years before traveling back to Earth Wednesday morning. Scientists stated that because

of the Earth’s electromagnetic field, much of the sun’s deadly radiation and material never reaches the planet’s surface. In April, the craft ejected a five hundred pound return capsule, which is what returned to Earth Wednesday.

It has been approaching the planet at about 600 miles per hour and by the time it reaches the atmosphere, the space craft was racing at nearly 25,000 mph. Parachutes were supposed to deploy to slow the craft before it reached the ground in Utah at about 11 a.m. Eastern Standard Time. A helicopter planned to snatch the Genesis capsule when it was still about a mile off the ground. But because of a malfunction, the chutes did not open and Genesis crashed to the desert floor.

A modified helicopter with a winch, hydraulic capture pole and hundreds of feet of line followed the capsule by radar until it moved in to earth. NASA officials at the Jet Propulsion Laboratory in California said that long-range cameras did not detect the parachutes that should have slowed the craft.

NASA officials located the

spacecraft around noon Wednesday after it dug into the desert soil. NASA footage shows the craft tumbling rapidly through the air before hitting the ground with enormous force.

The Genesis container contains atomic isotopes collected as particles streaming off the sun, known as the solar wind. Genesis collected the particles over the last two years on special tiles made from silicon, diamond, gold, sapphire and other materials. The solar particles, embedded in the collector tiles, were ejected at about 280 miles per second from the sun’s scorching corona or outer atmosphere.

It wasn’t immediately known whether cosmic samples it was carrying back as part of a six-year, \$260 million project had been destroyed. NASA officials believed the fragile disks that held the atoms would shatter even if the capsule hit the ground with a parachute.

Genesis has spent 1,125 days in space flight and collected approximately .4 grams of material. It launched on Aug. 8, 2001 and started collecting samples on Dec. 3 of that year.

The Owyhee Avalanche

P.O. BOX 97 • HOMEDALE, ID 83628
PHONE 208 / 337-4681 •
FAX 208 / 337-4867
E-mail
owyheeavalanche@cableone.net
U.S.P.S. NO. 416-340
Copyright 2004— ISSN #8750-6823

JOE E. AMAN,
editor and publisher
CHERYL BEESON, reporter
JENNIFER STUTHEIT,
office
ROBERT AMAN,
composition

Published each week in Homedale, Idaho by Owyhee Avalanche, Inc. Entered as Periodical, paid at the Post Office at Homedale, ID under the Act of March 3, 1879. POSTMASTER: send address changes to THE OWYHEE AVALANCHE, P.O. 97, Homedale, ID 83628.

Subscription Rates:
Owyhee County..... \$31.80
Canyon, Ada, Malheur
counties 37.10
Elsewhere.....40.00
(Price includes sales tax
where applicable)

Deadlines
Display advertising
Friday noon the week prior
to publication
Inserts
Friday noon the week prior
to publication
Classifieds
Monday noon the
week of publication
Legal notices
Friday noon the week prior
to publication

Letters to the editor
Friday noon the week prior
to publication
(Limit 300 words, signed,
with day phone number.)



Come in and see your local boy...
JEFF CHRISTOFFERSEN
For all your special building needs!
- Pole barns - remodels - cabinets - etc. -

4523 E. Cleveland • Caldwell • 454-8626 • cell 941-5563

The Tanner is Now Open!!

(Brand New 32 Bulb Bed)
Fall Special
10 tans for \$30

Lotion 20% off
Only thru September



The Hair Depot
337-HAIR (337-4247)
102 E. Wyoming, Homedale
(Just east of Paul's Market)

From page 1

✓ City rejects

the city in purchasing a new furnace. Mayor Donald Osterhoudt told the commissioners last month that after the city's audit, they were advised to "do something about sharing expenses."

Homedale Mayor Paul Fink attended a commissioners' meeting Tuesday and told the commissioners that he was not there to ask for "a bunch" of money from the county, he came to ask for help on the courtroom.

"I guess most of you have been in that court and have seen the condition it is in," Fink told commissioners. "I have a copy of the lease and the cost of the utilities and cleaning does is not covered. The only thing I am interested in is for us to try and fix up the facility. I am not interested in a month to month rent on the facility, but if that is the way you want it, that is fine, but it is going to take us longer to fix the facility."

Fink said he understood the previous administration had sent a council member on a "wild goose chase" but they had no intentions of doing anything.

"My feeling is they had no intentions of doing anything, but take the money," Fink told commissioners. "We have an awful lot of people come into that court. We are all county residents whether we live in the city of Homedale or in Marsing. We provide a lot of service for the people in the north end of the county. We go pick up the kids from the juvenile detention center whether they are from Marsing or out in the county. The only thing I am looking for is get the facility fixed. It would take a lot longer to do it by rent."

Commission Chairmen Hal Tolmie told Fink that the courthouse was a bonus for the city and did not have to be located in Homedale. He said he wanted a decision from the city as to what they intended to do.

"If I was Homedale I would jump at the chance," Tolmie said. "We budgeted \$15,000 two years ago and nothing happened. You are short money anyway. What

you are telling us is you want a block of money to remodel or what?"

"You never should have sent a dime down there until you knew what they were going to do," Fink told Tolmie of previous remodeling requests. "I can't go back and change anything the past administration did."

Fink said the offer would be good if the county would pay the \$6,000 plus utilities. Tolmie said a \$600 cleaning bill for a courtroom that is only used by the county twice per month, was not acceptable. He said the commissioners wanted a decision. Fink said he would continue to bill the county for its utilities as they have in the past.

"What we are telling you is that if the city wants to sign a one year lease for \$6,000, the opportunity is open to you," Tolmie told Fink. "If the city does not want to sign the lease that is ok too. The facility does not have to be down there."

Marsing Mayor Don Osterhoudt said after the council reviewed the proposal, they "affirmatively" accepted the offer.

"We would be receptive to either an up-front annual rent payment or a monthly rent of \$380 for a one year lease," Osterhoudt said in a letter to the commissioners. "We would appreciate your having the county attorney draw up a lease for that period. We would like to revisit this issue next year with better documentation of actual expenses. However, a lease providing an annual renewable clause based on ratification of the county and city would be acceptable."

✓ Marsing

Shockley said what has happened is that the assessed value of homes and businesses in Marsing has risen. He said the state has assessed the market value at \$126 million. A student generates under the state formula, \$4,433 for the school. He said that would give the school \$213,671, but the amount is capped.

"If we take the cap at .006 it would generate \$76,173 for addi-

tional revenue," Shockley said.

What the levy means to tax payers is an increase of \$30 per year for every \$50,000 of taxable value for last year's estimate. The levy will increase taxes by \$60 on a typical farm of \$100,000 and \$120 per year on a typical business of \$200,000. The notice states that the amounts are estimates and do not include homeowner's exemptions.

Shockley said he felt the reason the district has seen an impact of increased students is because the City of Marsing has added several new businesses in the last year.

"We have several businesses that have happened," Shockley said. "As we look at the unemployment rate, the rate has gone down in this area. If there are more jobs that brings in more people. We have a new trailer business, a new powder coating business and the ION is now here. The diversification that is happening as well as our standard main stays of a variety of areas. The other thing is that I believe we have 57 new housing starts in the area. I think as a person looks on the drive from the Nampa Caldwell area, we are growing more houses on those fields than we are anything else right now. That brings people our way good or bad."

The last year the district passed an emergency levy was in 2001-2002 and it was the third year in a row the district passed the levy.

✓ Museum

People who would like to leave their mark on the museum can purchase a tile for a four by eight tile to an eight by eight tile from between \$75 to \$1,000. Couch said if a person wants to purchase a tile for their family, they could purchase a larger tile and put their family name on it, or their ranch name, company name and even a brand or a company logo on the tile.

"For larger donations we will do a mural of tiles so it may take up two square feet. Those will be placed in a special area. If we get larger donations we will also name a room after them. They can choose the name of the room, with board approval."

In October, the society will hold the second annual "Aloha from the Owyhees." The event is a Hawaiian Luau in Murphy complete with Hawaiian dancers, authentic cuisine and historic speakers. Last year the event raised \$5,000 for the build-

ing fund.

Couch said further fundraisers are planned and corporate donations and grant money are being sought.

"We are projecting that we will sell about \$50,000 of the commemorative tiles," Couch said. "If anyone wants one they can call me at the museum and it will also be on our web site at www.owyheecounty/museum.net."



**Lordy, Lordy,
Look Who's Forty!!**

**Happy Birthday
Lath Callaway!**

We Love You!

**Friends and Family are
welcome to join us on the
eve of Sept. 18th, to help
celebrate his fading youth
with Karaoke at
downtown Marsing.**

*Have a
news tip?*

Call us!

337 4681

ANNUAL FALL

**Our 19th
Anniversary!**

PRODUCTION FEMALE SALE

Saturday, September 18, 2004

AT THE RANCH, MELBA, IDAHO

LUNCH AT NOON • SALE AT 1:00 PM



Bear Mountain Angus

Quality cows in every price range to fit any program.

105 HEAD SELL:

**SHOW HEIFER PROSPECTS • SPRING BRED HEIFERS
SPRING CALVING COWS • FALL CALVING COWS
FALL HEIFERS • SPECIAL E.T. PACKAGES**

Gary, Brian and Davy Stoller
12562 Cattle Drive • Melba, Idaho 83641

Phone: (208) 495-1121

Gary Cell: (208) 250-1454 • Brian Cell: (208) 250-6146

Fax: (208) 495-1149

WWW.BEARMOUNTAINANGUS.COM

CALL FOR "CATTLE-LOG"



0% INTEREST

On Any Item

IF BALANCE IS PAID BY:

**January
2006**

MINIMUM PURCHASE: \$399



Parma Furniture Co.

"Like Having A Friend At The Factory"
108 3rd St. Parma, Idaho

722-5158 toll free: 888-722-0078



Birth

Ryan Everett Aman

Ryan Everett Aman was born to Rob and Bridget Aman on Sept. 10, 2004 at 10:55 a.m. at St. Lukes Regional Medical Center in Boise. Ryan weighed 7 pounds 3 ounces.

Ryan's paternal grandparents are Joe Aman of Homedale and Naomi Aylward of El Paso, Texas. Paternal great grandmother is Virginia Aman of Murphy.

His maternal grandparents are Tony and Sally Morrisroe of Boise. Ryan joins two sisters, Lydia, 8 years old and Megan, 6 years old.

Three Creek

By Lola Blossom

Three Creek is still on the map and we have a new baby. Gus and Kimberly Brackett of Cherry Creek Ranch have a baby boy born August 28, 2004 at the Magic Valley Regional medical center hospital at Twin Falls. He was a husky 8 lbs. 3 oz. And has been named David William and will be called Will. His grandparents are Bert and Paula Brackett of Three Creek and Mr. and Mrs. David Williams of Twin Falls.

Paulette Elsner received a grant from the Chapter BP of the PEO Sisterhood to continue her education in elementary education at the college of Southern Idaho in Twin Falls.

Jake Brackett, youngest son of Bert and Paula Brackett is attending Graduate school in Tucson, Arizona to get his Master's degree.

Three Creek school started August 30, 2004. They have 5 pupils and a teacher, Marilyn Boss returned to teach. She is from the Salmon tract near Hollister, Idaho.

Walter Colyer and Lola Blossom attended the wedding of Walter's granddaughter, Candice Colyer and Brendon George at Tremonton, Utah on August 14, 2004. The bride and groom will reside in Tremonton.

Verana Blossom, Edna Pollard and Lola Blossom attended the wedding of Allison and Christine Cook at Hagerman, Idaho on August 28, 2004.

Therman Willis, 80 of Hansen, Idaho died August 31st, 2004 at his home in Hansen after suffering from alzheimers. A graveside service was held Tuesday September 7th at the Rock Creek Veteran's Cemetery near Hansen. Therman and his wife Jo were residents of Murphy's Hot Springs for many years. He had been a rancher at Hansen before retiring. He said "Harvey, you will never believe this but I had a Hereford cow have 4 live healthy calves all at one time." We said we could believe him because we had cut the picture and write up out of the paper years ago when we lived in Nevada. It was printed in the Times-News.

Essence Of Life
107 Main Street Marsing 896-7001

Keep your Tan

Buy 1 Tan Package get
2 lotions FREE
Tanning Accessories
up to **45% off**

Book an appointment NOW!
Look great for upcoming holidays
New hot bulbs

We Do Windows!

(Window Envelopes, that is.)

And we also do letterheads, business cards, multi-part forms, newsletters, booklets, tickets, flyers, certificates, pads, and regular envelopes, too!

Owyhee Publishing Co., Inc.
P.O. Box 217 • Homedale, ID • 337-4866

Homedale man publishes Sci-Fi novel

Bert Millspaugh, a 1948 graduate of Homedale High School, is the author of a recent Sci-Fi novel, *The Deadly Seeker*. Part of the book takes place along Flint Creek in Owyhee County.

The novel takes you from a Venus spacecraft landing in the Rocky Mountains with a deadly humanoid creature to the old Soviet Union spaceport in Kazakhstan.

"In the 1970's, a Soviet Union probe brought back a living Venusian child," Millspaugh writes. "Now, the Venusians want it back. They send a killing deadly seeker to find and retrieve it, but a navigational error lands the spacecraft in the Rocky Mountains.

"This novel takes you one step beyond the Soviet Union's landing on Venus. It takes you with rancher and ex-Army officer Mike Jenner's fight to overcome his chronic anger and express his love for Ellen Townsend. Major John Sullivan's attempt to locate and return the Venusian child from Russia and Mike and Ellen's battle and annihilation of the deadly seeker."

Millspaugh was a member of the high school boxing, track and football teams and the local Boy Scout troop. After graduation, he attended the Coyne Radio and TV repair school on Chicago, Illinois then served four years in the U. S. Navy during the Korean War as Petty Officer Electronics.

Following the war, he worked

in Southern California for Douglas Aircraft as a technical writer and designer, and then retired from Northrop Corporation after 30 years, where, as an Engineering Administrator, he managed a Technical Publications Department.

Millspaugh has written many outdoor and travel articles published in numerous regional and national magazines. He is an accomplished photographer with scenic and barn photos sold throughout Southern California and presented in his travel articles. Millspaugh has a B. A. degree in Technical Communications from the California

University.

He is a member of the Southern California Writer's Association, SCWA, and a graduate of the Famous Writer's School, Westport, CT and the Writer's Digest School of Novel Writing.

An Eagle Scout and a scoutmaster, he led scouting expeditions to the summits of several mountains including Mt. Whitney, the highest peak in continental USA.

He and his family camped extensively in the western states and, following retirement, he traveled throughout the United States with his wife, Barbara, in their motorhome.



Bert Millspaugh

Senior news

Homedale

Sept 15: Finger steaks, tater tots, rolls, pork & beans, dessert.
Sept 16: Basked fish, baked potato, string beans, roll, dessert.
Sept 18: Senior Dance 7pm-10pm. Woody Purdom & Yesterday Country. Price is \$3 at the door. Bring finger foods.
Sept 21: Spaghetti & meat sauce, string beans, dessert. Foot clinic starting at 10am. Sign up sheet at front desk.
Sept 22: Hot dog bun, cole slaw, potato salad, dessert.
BINGO every Friday night @ 6:30. We give cash prizes. Also our second hand store is open for business.

Marsing

Sept 15: Sweet & sour pork, rice, oriental vegetable stir fry, broccoli/cranberry salad, soup of the day, cottage cheese, fruit, beverage. Caldwell & Nampa Spanish meeting.
Sept 16: BBQ chicken, potatoes, zucchini, potato salad/eggs, soup of the day, cottage cheese, fruit, beverage.
Sept 20: Sliced ham with raisin sauce, seasoned rice, carrot, broccoli, onions, biscuits, soup of the day, cottage cheese, fruit, beverage.
Sept 21: Beans & ham, stewed tomatoes, cornbread, veggie tray, soup of the day, cottage cheese & fruit, beverage.
Sept 22: Oven fried chicken, potatoes, waxed & green bean combo, soup of the day, broccoli salad, cottage cheese & fruit, beverage.

FAMILY FARM DAYS
HOSTED BY
VISION BIBLE CHURCH
221 W. MAIN
MARSING ID
89647

FRIDAY: September 24th at 6:00 p.m.
• FREE ICE CREAM SOCIAL & AUCTION PREVIEW
• WESTERN MUSIC & DANCE

SATURDAY'S EVENTS: September 25th
• FREE PIG BBQ—5:30 p.m.
• LIVE AUCTION—6:00 p.m. (Everything from vehicles to sewing sets)

SUNDAY EVENTS: September 26th
• FREE PANCAKE BREAKFAST—9:00 a.m.
• OPEN AIR SUNDAY SERVICE — 10:00 a.m.

SATURDAY & SUNDAY EVENTS:
• OLD FASHIONED CARNIVAL GAMES
• PONY RIDES, MULE CART RIDES, PETTING ZOO
• LIVE MUSIC ALL DAY
• GIANT YARD SALE AND FLEA MARKET (vendors needed 286-9122)

• **HELP SUPPORT** our local food bank by bringing a nonperishable food item with you!!

LIVE MUSIC ALL DAY **SEPTEMBER 24th -26TH, 2004** **FOOD BOOTHS ALL DAY**

Help Homedale's

Middle School activities

and keep informed of
local events



Subscribe to

The Owyhee Avalanche

through the school's annual
magazine and newspaper sales drive, and we
will donate 25% of all
subscription sales to the school
activities program.

SUBSCRIPTION RATES

Owyhee County	\$31.80
Canyon, Ada, Malheur counties	\$37.10
Elsewhere	\$40.00

(Tax Included Where Applicable)

The Owyhee Avalanche

**DRIVE
ENDS
Oct. 24!**





Teddy bear picnic

Zoey Warn and Kasen Skinner enjoy an afternoon in the sun with a teddy bear picnic. The kindergarten students learned about the letter B. Submitted photo.

Teddy bear picnic delights youngsters

By Angela Larsen, Jordan Valley High School

On September 10, the Kindergarten class at Jordan Valley High School had a Teddy Bear Picnic, which consisted of Zoey Warn, Kasen Skinner, and Mrs. Telleria as their chaperone.

The event was held outside of the elementary kindergarten room on the grass. It was to help enforce the sound of the letter “B”. While sitting and enjoying their snacks, Kasen said that his favorite ”B” object is a bear and food is bologna. Zoey says that she really enjoys playing with her favorite, “B”, blocks and eating her favorite, “B”, blueberries.



Western division winner

Blenda Lewis on her mule Concho during the sixth annual Mule Days celebration in Star, Idaho. Belinda accumulated the most points for the western division taking first in pleasure, first in working cow horse and first in reining. The event was held on Labor Day weekend earlier this month. Photo submitted by Donna Bortfeld.

Owyhee County plans to mitigate wildfire risk

The Owyhee County Commissioners have created a Wildfire Mitigation Plan Committee to complete a Wildfire Mitigation Plan for Owyhee County as part of the National Fire Plan authorized by Congress and the Whitehouse.

The Owyhee County Wildfire Mitigation Plans will include risk analysis at the community level with predictive models for where fires are likely to ignite and where they are likely to spread rapidly once ignited. Northwest Management, Inc. has been retained by Owyhee County to provide wildfire risk assessments, mapping, field inspections, and interviews, and to collaborate with the committee to prepare the plan. The committee includes rural and wildland fire districts, land managers, elected officials, agency representatives, and others. Northwest Management, Inc. specialists are conducting analyses of fire prone landscapes and making recommendations for potential treatments. Specific activities for homes, structures, infrastructure, and resource capabilities will be proposed as part of the analysis.

One of the most important steps in gathering information about fire risk in Owyhee County is to conduct a homeowner’s survey. Northwest Management, Inc., in cooperation with local fire officials, will mail a brief

survey to randomly selected homeowners in the county seeking details about home construction materials, proximity to water sources, and other risk factors surrounding homes. This survey is very important to the success of the plan. Those homes that receive a survey are asked to please take the time to complete it, thereby benefiting the community overall.

The planning team will be conducting public meetings to discuss preliminary findings and

to seek public involvement in the planning process in September. A notice on the date and location of these meetings will be posted in local newspapers.

For more information on the Fire Mitigation Plan projects in Owyhee County contact your County Commissioner, or John McGee, the Owyhee County local coordinator, at 208-573-0155 or William Schlosser at the Northwest Management, Inc. office in Moscow, Idaho at 208-883-4488.

WE CAN HANDLE ALL YOUR HEATING & COOLING NEEDS!

RESIDENTIAL OR COMMERCIAL

ALL TYPES OF FURNACES:

OIL - GAS - ELECTRIC - HI TECH

Heat Pumps • Air Conditioners • Boilers • Humidifiers
Water Heaters • Fireplaces (Wood or Gas)
Air Cleaners • Central Vacuum • Sheetmetal

SPECIALIZING IN OIL FURNACES

BAUER

HEATING & COOLING

Residential Commercial

24 HOUR

Emergency Service

Greg Kelly

Homedale • 337-5812

573-1788 • 573-1886

bryant

Heating & Cooling Systems

Ben & Lori Badiola / Owners

Back to College

Subscription Special!

For the college student:

Nine-month subscription

\$15⁰⁰

Plus tax where applicable

The Owyhee Avalanche

337-4681

Draft EIS focuses on wind energy development

Rebecca Watson, assistant secretary of the Interior for Land and Minerals Management announced the availability of a Draft Programmatic Environmental Impact Statement on Wind Energy Development on BLM-Administered Lands in the Western United States.

The public is invited to review the document and submit comments during the next 90 days.

“As we look closer to home for ways to help meet America’s energy needs in an environmentally sound manner, it’s apparent that our public lands have much to offer in terms of renewable energy resources, including wind energy,” Watson said. “Our national energy strategy includes not only enhancing supplies of renewable and nonrenewable energy, but also places an important focus on conservation.”

The Draft Programmatic EIS was prepared to assess the environmental, social and economic

impacts associated with wind energy development on public lands in 11 western states, and to evaluate a number of alternatives to determine the best management approach to mitigating potential impacts and facilitating wind energy development. The study does not include Alaska.

The Draft Programmatic EIS is in response to recommendations set forth in the President’s National Energy Policy, which encourages the development of renewable energy resources on public lands.

“We are working aggressively with communities and local of-

ficials to promote and encourage the development and use of our domestic renewable energy sources,” Watson said. “Our approach is consistent with the President’s National Energy Policy for diversifying the nation’s energy portfolio by encouraging the use of biomass, geothermal,

wind and solar energy on federally owned lands.”

Public comments are encouraged via the web. Written comments should be mailed to BLM Wind Energy Programmatic EIS, Argonne National Laboratory, EAS/900, 9700 S. Cass Ave., Argonne, IL 60439.



Jessica DeGeuss, Owyhee County dispatcher.

Jessica DeGeus dispatches for county law enforcement

Jessica DeGeus, an Owyhee County native, recently joined the staff at the Owyhee County Sheriff’s office as a dispatcher and said last week that she has always enjoyed helping people.

Jessica grew up in the Homedale area and graduated from Homedale High School. She said she recently got married and had a baby girl just two months ago.

“I thought it would be exciting and I could help people,” Jessica said. “I like the fast pace of it.”

Jessica and her husband Ed live in the Reynolds Creek area on a ranch. She said she loves the quiet of the area and the closeness of the community. She will attend Post Academy for dispatching next year.

Have a news tip?

Call us!

337 4681

extreme

LOAN EVENT

3%

fixed for your fall fixer-upper.

3%
Fixed Intro Rate
Through January 2005

|

4.50%

APR
Prime for the life of the loan

Home Equity Credit Line[†]

Fall is flying and summer’s dying, but there’s still time to save big on a Home Equity Credit Line. So why not tap into your home’s value with a fixed 3% intro rate on a Home Equity Credit Line— pay off some of those piling credit cards, get into a new car, or take advantage of the cooler weather to finance that fall fixer-upper! Plus, enter to win our \$50,000 Extreme Home Remodel Giveaway or one of nine weekly \$1,000 cash prizes* Offer ends October 9, 2004, so visit your local branch today or call 1-800-789-5626. To apply online, visit www.zionsbank.com[®].

Visit us at:
315 A Avenue • 482-6218
Or one of our other 21 locatio^sn throughout Idaho.

WE HAVEN’T FORGOTTEN WHO KEEPS US IN BUSINESS.[®]

[†]Special introductory rate of 3%APR will end with the statement cycle date in January 2005. The APR after the introductory period will equal the prime rate (currently 4.50% as of 8/10/04). This rate is variable. The maximum APR is 21%. Automatic payment from a Zions Bank account required. Minimum commitment of \$25,000 to qualified borrowers. There are no origination fees to open the plan. A \$15 charge is made for any check less than \$500. Rates subject to change without notice. Hazard insurance required. Owner occupied property with an 80% or less combined loan to value. Offer good through 10/9/04. Other restrictions apply. *No purchase or transaction necessary. Visit your local branch for complete contest rules.



Cowboy Country Supply

A new store in Jordan Valley opened its doors earlier this month. Cowboy Country Supply, formerly Tellaria's Market is owned and operated by Vern Piel and features grocery items as well as meals on the go and historic knick-knacks. Photo submitted.

Small town welcomes new store

On Sunday, Sept. 5, Jordan Valley residents welcomed the opening of their only grocery store. Formally known as Tellaria's Market, Vern Piel's Cowboy Country Supply is located on Yturri Blvd.

Piel came to Jordan Valley from Echo, where he has lived since 1978. He has already started many remodeling projects, including new flooring, and has plans for others, such as new bathrooms and fixing up the store's outer appearance.

Customers will notice changes being made to the products available as well. The store includes groceries and a section where customers can pick up historic knick-knacks, including violins.

There will also soon be various hot meals available for those on the go, such as hot dogs, hamburgers or nachos. In addition, Piel said he also plans on providing fresh, in season produce.

"If you have a favorite product that you do not see on the shelf, put it down on a list and I will do what I can to make it available," Piel said.

Davis attends cattle industry summer conference

Eric Davis, a cow-calf producer and feedlot operator from Bruneau, was one of an estimated 1,000 producers and cattle industry representatives from across the country who came together in Denver, Colorado recently for the 2004 Cattle Industry Summer Conference, August 9-13. Davis serves as Past President with the National Cattlemen's Beef Association, which met as part of the Summer Conference. Davis also serves on the NCBA executive committee.

Those who wish to help reduced the risk of BSE in the U.S. must be flexible, rely on science and communicate clearly with each other, the public and the government. Those are among the key findings presented at the conference from the national BSE Summit in Fort Worth, Texas, April 26-27, funded in part by the beef checkoff and convened by the Beef Industry Food Safety Council.

Advertising research presented at the conference found that consumer passion for beef has been fueled by award-winning, check-

*Buy it, sell it,
trade it, rent it...
in the
Classifieds!*

off funded print and television advertising that reached 93 percent of adults 11.5 times. There were three flights during the fiscal year, which began October 1, 2003. Television spots ran 3,600 times during the year, with print ads seen 55 times in national magazines such as *Good Housekeeping*, *Gourmet* and *Sports Illustrated*. On average, the advertising reached consumers for less than a penny a person.

Lady Trojans beat Pilgrims 3-1

Homedale moved into the winners bracket last week with a 3-1 win over the New Plymouth Pilgrims in non-conference volleyball. Homedale won 25-17, 16-25, 25-17 and 25-15.

Hailey Hall led Homedale in attack with nine kills while Jolene Maxwell had 16 points on five kills and four aces.

Homedale travels to McCall on Thursday and will travel to Fruitland for tournament action on Saturday.



Serve

Beth Dowell, Jordan Valley Mustangs, serves the ball during the McDermitt volleyball match last week. The varsity team beat McDermitt in three matches, but the junior varsity team lost 2-1.



Volley

Faith Brasher concentrates on the ball as Tegan Krall moves in. Photo by Gregg Garrett.



Set

Jessica Stimmel sets the ball at the net for Shannon Batt. The Homedale Varsity girls defeated New Plymouth in 3 out of 4 matches for a league victory. Photo by Gregg Garrett.

MARSING HUSKIES

Fall Sports Schedule

FOOTBALL

Friday, 09-17 at Glenns Ferry 7:00 pm

JV: Thurs., 09-16 Home vs. Glenns Ferry 7:00 pm

VOLLEYBALL

Thurs, 09-16 home vs. Nampa Christian 5:00 pm

Saturday, 09-18 Fruitland Tourney

Tuesday 09-21 Home vs. Nyssa 5:00 pm

WE'RE CHEERING YOU ON!

Marsing Hardware & Pump

896-4162

Sandbar Restaraunt

896-4124

NAPA Owyhee Auto Supply

896-4815

The Owyhee Avalanche

Jordan Valley victorious over Adrian

by Paul McKay, Jordan Valley High School

The Jordan Valley football team met Adrian’s challenge on Sept. 10th in Adrian. The game started out with a fast six points by Adrian.

With a lot of tough playing by both sides it looked as though Adrian was going to be in the lead. Then with just a few seconds to go before half time, Jordan Valley scored a touchdown, putting the score to 14 points for Jordan Valley and six for Adrian.

The second half of the game the fight continued. Adrian showed a lot of skill in passing the ball and Jordan Valley showed talent in pounding the ball through the line. The game concluded with a score of 36-26.

Jeremy Chamberlain, head coach for the Jordan Valley mustangs said, “I was very happy with the way Jordan Valley performed offensively and defensively. I thought we did a good job of controlling the ball in the second half. I thought we showed a lot of heart and determination late in the game. It looks like both teams played a good game and it will be enjoyable to see how each team does in the future.”

Parma athlete injured

Homedale Ambulance transported a Parma junior varsity football player to a local hospital with neck injuries Thursday night. Derrick Race was transported after he was tackled and hurt.

Homedale High School Principal Mike Williams said Race received a “stinger” in his neck which caused him to temporarily lose feeling in his lower extremities, but Williams said he spoke to the athletes mother and Race has since been released and is recovering at home.

“Derrick is at home and is sore, but was feeling better by Friday afternoon,” Williams said.

Williams said as a precautionary step the Homedale Ambulance Department placed Derrick on a backboard before transporting him to a local hospital to be examined.

Payette sweeps Lady Huskies

Payette Pirates cruised to a 3-0 win over the Marsing Huskies last week in a non-conference volleyball match at Payette High School.

The Pirates won 25-9, 25-21, 25-8 to improve to a 2-1 record. Marsing will host Nampa Christian Thursday and will travel to Fruitland for a tournament Saturday.

Marsing’s individual results were not made available.

Trojan plays stop Panthers 28-14



Return punt

Nick Williams (2) returns a punt and is chased by Parma’s Franky Olmos (5). Photo by Gregg Garrett.

The Homedale Trojans stopped the Parma Panthers 28-14 Saturday night in a non-conference football game in Parma. Homedale jumped to a 21-0 lead in the second quarter, but Parma answered with a 21-14 score at the break.

Homedale took the opening goal at 48 yards on six plays in 2:23. Trojan quarterback Brett Hopkins hustled into the end zone from 15 yards for the first goal. The Trojans scored from 34 yards out when Hopkins hit Maucus Eby on a fourth down and ten yards to go and took the game to 13-0. Kyle Carson found the goal line from one-yard out on Homedale’s third possession to take a substantial lead.

In the fourth quarter, Hopkins found Nick Williams for a 30-yard pass after Zach Lootens intercepted Parma late in the third quarter.

Hopkins completed 11-of-20 on the night for 206 yards and two touchdowns. He rushed for 76 yards. Homedale recorded

385 yards of total offense and held the Panthers to 230 yards.

Homedale will continue non-conference play on Friday and travel to New Plymouth.



Hopkins rushes

Quarterback Brett Hopkins led Homedale to a 28-14 win over rival Parma. Hopkins rushed for 76 yards and passed for an additional 206 yards on the night. Photo by Gregg Garrett.

Trojans lose to Pirates 1-0

The Homedale Trojan soccer team lost a close 1-0 soccer match to the Payette Pirates Thursday night in its first defeat of the season.

Soccer coach David Correa said the game was close and in the first half neither team had scored any goals.

“During the second half, Payette scored a goal after an unlucky bounce off of our goalie’s chest,” Correa said of the game.

Goalie Luis Escutia had a good night with seven saves in the game.

“Our defense played a superb game and our offense never stopped attacking their goal,” Correa said. “However, we weren’t able to score. I’m very pleased with my team’s performance. They showed discipline and determination on the field.”

Cole Valley hands Raiders 3-1 loss

The Rimrock Raiders are a young team and it showed last week with a 3-1 loss to the Cole Valley Chargers in 1A Western Idaho Conference volleyball action.

Rimrock lost four starters off its team last year and have no seniors on the roster this year.

The Raiders were led by Emily Chandler with nine points, five kills and three blocks. Shannon Hipwell had eight points, seven assists and three kills, while Robynn Ridley added 12 points and three blocks.

Mayor ousts adult soccer teams from Sundance Park

Homedale City Mayor Paul Fink said last week that he has put an end to adult soccer matches at Sundance Park because of the destruction and litter that is left behind after the games.

Fink told the council that he had received complaints that the grounds were being destroyed and beer bottles and cans were being broken on the field. Fink said he inspected the grounds the day after a soccer match last week and found the accusations

to be true.

“I shut the park down to adult soccer due to glass bottles being broken and the fields being destroyed,” Fink told the council Wednesday night. “I told them that there would be no more adult soccer matches in the parks. We have warned them and now it is done.”

Fink said the city stands some responsibility if a child got hurt from some of the glass in the field. He said the adult team

could approach the council in the future if they pay a clean up fee to use the park. The council agreed. He said an agreement would have to be written up on the matter.

Buy it, sell it,
trade it, rent it...
in the
Classifieds!



GO, TROJANS!

On to Victory!



Homedale High School Fall Sports Schedule

VOLLEYBALL Thursday, 9-16 at McCall 5:00 pm Saturday, 9-18 Varsity Tourney at Fruitland 8:00 am Tuesday, 9-21 Home vs. Weiser 5:00 pm	VARSITY FOOTBALL Friday, 09/17 @ New Plymouth 7:00 pm
SOCCER BOYS VARSITY Thursday, 09/16 Home vs. Fruitland 5:30 pm Monday, 9-20 Home vs. Weiser 5:30 pm Tuesday, 9-21 Home vs. Vallivue JV 5:00 pm	JV FOOTBALL Thursday, 09/16 Home vs. New Plymouth 7:00 pm
GIRLS VARSITY Thursday, 9-16 at Vallivue JV 4:30 pm	CROSS COUNTRY Thursday, September 16 at Weiser / Rolling Hills

WE'RE SUPPORTING YOU ALL THE WAY!

**Auto Body by Alan**
337-4837

**BOWEN & PARKER**
P.A. 337-3271

**PAUL'S**
Matteson's
Owyhee Motor Sales
337-4664

**SNAP! AUTO PARTS**
337-4668

Snake River Co. LLC
337-3115

Bauer Heating & Air Conditioning
722-6666

**The Owyhee Avalanche**

THE BUSINESS DIRECTORY

<div>CERTIFIED LOCKSMITH</div> <div>HARVEY'S AUTO PARTS</div> <div>LOCKSMITH & TOWING</div> <div>KEYS MADE • LOCKS REPAIRED</div> <div>EMERGENCY OPENINGS</div> <div>211 MAIN ST. MARSING, ID • 896-4643</div>	<div>ELECTRICIAN</div> <div>H&H ELECTRIC</div> <div>Serving Owyhee County for 25 years</div> <div>Jeff Haylett</div> <div>337-4881</div>	<div>SAND & GRAVEL</div> <div>Owyhee Sand, Gravel & Concrete</div> <div>337-5057</div> <div>573-2341 • 573-2343 • 573-2339</div> <div>HOMEDALE, IDAHO</div> <div>ALL TYPES OF ROCK & DIRT</div> <div>STATE CERTIFIED DRAIN ROCK</div> <div>FREE ESTIMATES ON ROADS & DRIVEWAYS</div> <div><i>Chuck, Ray & Bill Maxwell</i></div>	<div>ELECTRICIAN</div> <div>Pioneer Electric</div> <div>Commercial, Residential, Industrial, Service</div> <div>Providing you courteous and quality service</div> <div>24 Hour Emergency Service</div> <div>Ahmad Golorangi Office • 495-2379 C-31391 Cell • 850-3270</div>	<div>ACCOUNTING</div> <div>BOWEN & PARKER</div> <div>Mikeal D. Parker, CPA</div> <div>• 19 E. Wyoming • P.O. Box 905 • Homedale, ID 83628 337-3271</div> <div>Ron V. Bowen, CPA</div> <div>• 624 16th Ave S. • P.O. Box 41 • Nampa, ID 83653 467-6900</div>
<div>GENERAL CONTRACTOR</div> <div>WIZARD RENOVATIONS</div> <div>Custom homes Custom Remodels</div> <div>Custom woodworking</div> <div>"Thirty years of references"</div> <div>208-482-6115</div> <div>Interior Decorating and Landscape</div> <div>Design consultant on staff</div>	<div>ADVERTISING</div> <div>YOUR AD HERE!</div> <div>\$10.00 PER WEEK</div> <div>OWYHEE AVALANCHE</div> <div>337-4681</div>	<div>SPORTING CLAYS</div> <div>IDAHO SPORTING CLAYS</div> <div>337-4826</div> <div>3 Miles south on Hwy. 95 from Homedale, turn West on Graveyard Point rd., go 4 miles and turn South on Sage. Go over the first hill and we're on the left.</div> <div>GIFT CERTIFICATES AVAILABLE</div>	<div>HOME CARE</div> <div>A Special Touch Home Care, Inc.</div> <div><i>In YOUR Home Care</i></div> <div>Licensed Staff • Medicare Medicaid • Private Pay</div> <div>216 W. Idaho PO Box 933 Homedale, ID 83628</div> <div>(208) 337-5343</div>	
<div>SIDING CONTRACTORS</div> <div>MGM</div> <div>Siding Contractors</div> <div><i>William T. Bruce</i></div> <div>1024 W. Finch Dr.</div> <div>Nampa • 465-0214 • Fax 465-9831</div> <div>Vinyl, Steel & Aluminum Siding</div> <div>Vinyl Windows</div> <div>BALCOA Master Contractor</div> <div>Craftsmanship You can Trust</div>	<div>EMBROIDERY</div> <div>Idaho Embroidery & Design</div> <div>Custom embroidery for schools, business, sports, clubs and group events. Stop by our web site for samples of our work. We can help with your logo if you don't have one.</div> <div>482-7516</div> <div>WWW.EMBROIDERYID.COM</div> <div>email - INFO@EMBROIDERYID.COM</div>	<div>BED LINERS</div> <div><i>Quality work from start to finish</i></div> <div>Auto Body by Alan</div> <div>Auto Glass • Frame & Unibody Repair • Collision Repair • Custom Paint • All Work Guaranteed</div> <div>Alan Bahem</div> <div>Rt. 1, Graveyard Pt. Rd.</div> <div>Homedale, ID 83628</div> <div>(208) 337-4837</div> <div>Mobile 250-4837</div>	<div>AUTO BODY</div> <div>AA PC REPAIR</div> <div>Tired of your computer not working right?</div> <div>I will come to your home!</div> <div>Competitive Rates • Industry Certified</div> <div>"Outstanding Service"</div> <div>Homedale, Idaho 337-6235</div>	
<div>CHIROPRACTIC</div> <div>HOMEDALE CHIROPRACTIC CENTER</div> <div>J. Edward Perkins, Jr. D.C.</div> <div>111 S. Main - Homedale - 337-4900</div> <div><i>Your Pain and Wellness Clinic</i></div> <div>• Low Back Pain • Carpal Tunnel Syndrome</div> <div>• Leg Pain • Whiplash/ Car Accident Injuries</div> <div>• Neck Pain • Work Injuries</div> <div>• Headache Pain • Sports Injuries</div> <div>• Shoulder Pain • Custom Orthotics (Shoe inserts)</div> <div>Call 208/337-4900 for a Free Consultation</div>	<div>CHIROPRACTIC</div> <div>Homedale Clinic</div> <div>Terry Reilly Health Services</div> <div>Chip Roser, MD</div> <div>Richard Ernest, CRNP</div> <div>Janine Franco, PA</div> <div>108 E. Idaho, Box 1058 Homedale, Idaho 83628</div> <div>337-3189, Night 466-7869</div> <div>Mon., Wed., Thurs. & Fri. 8:30 - 5:00</div> <div>Tuesday 8:30 am - 9:00 pm</div>	<div>HEALTH SERVICES</div> <div>Marsing Clinic</div> <div>Terry Reilly Health Services</div> <div>Faith Young Peterson, CRNP</div> <div>Family Nurse Practitioner</div> <div>Chip Roser, MD</div> <div>Janine Franco, PA</div> <div>201 Main Street, Marsing, Id. 83639</div> <div>896-4159, Night 466-7869</div> <div>Mon., Tues., Wed., & Fri. 8:30 - 5:00</div> <div>Thursday 8:30 am - 9:00 pm</div>	<div>HEALTH SERVICES</div> <div>Homedale Dental</div> <div>Terry Reilly Health Services</div> <div>Eight 2nd Street West, Homedale, Idaho 83628</div> <div>337-6101</div> <div>Ronald Fife, DDS</div> <div>Monday - Thursday 8:00-1:00/2:00-5:00</div> <div>Accepting Emergency Walk-Ins Daily</div> <div>We Accept Medicaid</div>	
<div>CHIROPRACTIC</div> <div>Marsing Chiropractic</div> <div>Welcome to Town!</div> <div>Kathleen McKay-Zahedi, D.C. (Dr. "Z")</div> <div>• \$25 Adjustment</div> <div>• Walk-ins Welcome</div> <div>Next to U.S. Bank, Marsing Tele: 208-896-5520</div>	<div>CHIROPRACTIC</div> <div>Homedale Clinic</div> <div>Terry Reilly Health Services</div> <div>Chip Roser, MD</div> <div>Richard Ernest, CRNP</div> <div>Janine Franco, PA</div> <div>108 E. Idaho, Box 1058 Homedale, Idaho 83628</div> <div>337-3189, Night 466-7869</div> <div>Mon., Wed., Thurs. & Fri. 8:30 - 5:00</div> <div>Tuesday 8:30 am - 9:00 pm</div>	<div>ADVERTISING</div> <div>YOUR AD HERE!</div> <div>\$10.00 PER WEEK</div> <div>OWYHEE AVALANCHE</div> <div>337-4681</div>	<div>RV Park</div> <div>River Haven R.V. Park</div> <div>Quiet Country Atmosphere</div> <div>6920 Old Bruneau Hwy. Marsing, ID, 83639</div> <div>Fishing in the Snake River • Picnic Grounds • Bird Watching Propane • Laundry • Full Hook-Ups • Showers</div> <div>River Haven R.V. Park offers a quiet, country atmosphere with fishing, bird watching, or just relaxing. Daily, weekly and monthly rates. Small pets on leashes allowed. Open to public is a full-line laundromat (75¢ a load) and propane (\$1.50 a gallon)</div> <div>Call 896-4268</div>	
<div>HOT OR COLD DRINKS</div> <div>GRAND OPENING!</div> <div><i>Sweet D's Java Express</i></div> <div>Hot or Cold Drinks</div> <div>In front of Mike's Metal Fab</div> <div>21048 Hwy 19, Greenleaf</div> <div><i>We'll start your day off right!</i></div> <div>10% Discount</div> <div>with this coupon</div> <div>Good through Sept. 30</div> <div>Dan & Diane Werre</div> <div>482-9252</div>	<div>ADVERTISING</div> <div>YOUR AD HERE!</div> <div>\$10.00 PER WEEK</div> <div>OWYHEE AVALANCHE</div> <div>337-4681</div>	<div>RESTAURANT</div> <div>Candy's</div> <div>COFFEE & BAKERY</div> <div>337-5070</div> <div>10 N. MAIN STREET</div> <div>Open 5:30 a.m. Monday thru Friday</div> <div>Saturday and Sunday 7 a.m.</div> <div>SOUPS* SALADS* SANDWICHES*</div> <div>COFFEE* ESPRESSO* PIZZA</div> <div>Delivery available in Homedale area</div>	<div>HAIR • NAILS • TANNING</div> <div>The Hair Depot</div> <div><i>Chris Bahem</i></div> <div>102 E. Wyoming • Homedale (Just East of Paul's Market)</div> <div>208-337-HAIR (4247)</div> <div>Hair • Nails • Tanning</div>	<div>CARPENTRY</div> <div>I HAVE JUST MOVED MY BUSINESS TO WILDER.</div> <div>WE'VE BEEN SERVING CANYON COUNTY FOR THE PAST 11 YEARS. WE WELCOME YOUR BUSINESS.</div> <div>CALL FOR FREE ESTIMATES.</div> <div>NO JOB TOO SMALL.</div> <div>BOB PAASCH 482-7204</div> <div>BOB'S CARPENTRY</div>

The Owyhee Avalanche

Owyhee County's best source for local news!!

Looking back...

from the files of The Owyhee Avalanche and Owyhee Chronicle

25 years ago

September 27, 1979

Murray to run again

Homedale Mayor George Murray announced Friday that he will be a candidate for reelection November 6.

At the September meeting of the Homedale City Council, Murray announced he had decided not to seek a third term as mayor. A week later, the incumbent announced that after thinking the matter over, he decided to run after all.

Murray said the primary reason for changing his mind was the city water system project and the new city library project. He said he would like to remain in office to see the projects through to completion.

Ground was broken last week for the new library building. About half of the funding for the project, \$30,000 came from city revenue sharing funds for the coming fiscal year.

Dowdle named MHS queen

Gayle Dowdle was crowned 1979 Marsing high school homecoming queen at ceremonies September 21 in Marsing.

Queen Gayle and her court watched as the Marsing football squad narrowly missed upsetting visiting New Plymouth Friday evening.

Mary Webb and Wendy Siggers were the other queen candidates. Princesses included Shellie Knarr, junior; Tracy Dines, sophomore and Jennifer Thompson, freshman.

HHS queen

Homedale Homecoming Queen Andrea Jackson and her court had plenty to cheer about Friday evening as the Trojan football team rolled up a 40-0 first half.

Punt, pass winners

Jason Haylett and Gary Kushlan, both of Homedale, were winners in their respective age groups in the annual Punt, Pass and Kick competition, sponsored by Happy Day Ford in Caldwell.

Jason is the son of Mr. and Mrs. Jeff Haylett and Gray is the son of Mr. an Mrs. Dave Kushlan.

Both youths will now advance to the next, P,P&K competition. The finals will be held at the 1980 Super Bowl game in January.

Jr. High news

Members of the Homedale Junior High football squad include Fred Brunell, Mike Frank, David Hyde, Daryl Kennedy, Gary Kushlan, Doug Moats, Randy Shanley, Dennis Taggart, Shaun Conrad, Scott Treund, Roy Rangel, Dee Taggart, Jim Clarke, Jim Nettleton, Joe Zamora, Mike Buck, Jeff Bull, Richard Cook, Tracy Goodloe, Todd Kelly, Eric Kushlan, Chris Landa, Terry Uda, Kevin Coleman, Todd Hill, James Johnson, Fred Lopez, Brad Williams, Dan Breach, Larry Corta, Rusty Page, Eric Wilson, Ted Perkins, Mike Triplet. Managers include John Indart, Pat Eidemiller, Kevin Kent, Rusty Taylor and Rodney Kirstine.

Members of the Homedale Junior high volley ball teams are as follows:

7th grade: Teresa Johnson, Debbie Williams, Tracy Garcia, Christi Bautista, Shannon Nash, Pam Kubosumi, Lynn Metzger, Stephanie Caron, Teresa Kubusumi, Julie Badiola, Cindy Yamamoto and Jody Fredrick. Managers include Raquel Orce and Holly Drum.

8th grade: Ann Akichika, Deanna Prow, Ruthann Louder, Niki DeLeon, Susie Seibold, Sylvia Cisneros, Brenda Collins, Mary Arvin, Bobby Pennington, Sally Schaecher and Arlene Burman. Manager is Rena Anderson.

The Junior high will be conducting a magazine and newspaper subscription drive during the next few weeks. Funds raised will be used for junior high school projects.

50 years ago

September 9, 1954

School trustees to meet Tues., Sept. 14 at county seat

The trustees of all the school districts of Owyhee county will meet at the court house at Murphy on Tuesday, September 14, at 2:00 p.m. to elect a member of the County Board of Education. The term of Leslie R. Selders of Homedale expires this month.

All trustees are urged to be present. The meeting is open to the public and any person interested in school affairs in Owyhee County is invited to attend.

Homedale school hit a new high in student enrollment

An enrollment of 737 pupils in the Homedale schools have the building pretty well budging at the seams. Such was the sentiments expressed after the opening of the school year Tuesday when 535 pupil enrolled in the elementary school and 202 were on hand for the opening of high school.

A breakdown of class enrollments by Charles Zollinger, superintendent, showed the following:

First grade, 81; 2nd grade, 70; 3rd grade, 65; 4th grade, 63; 5th grade, 63; 6th grade 74; 7th grade, 70; and 8th grade, 49.

In the high school, Zollinger reported the first day attendance as follows:

Freshmen, 63; sophomore, 54; Juniors, 52; and seniors, 33.

At the school board meeting on Tuesday evening, Mr. Zollinger said it would be necessary to rearrange classrooms so that a third section of first graders could be housed in the new grade school building. Another teacher will also have to be employed to handle the additional class, he said. One section of the fourth grade would be moved to the old building to make room for the smaller youngsters in the new building.

Albert Eidemiller wins election for school trustee

Albert Eidemiller was elected as school trustee from the Canyon county portion of school district no. 370 at an election held Tuesday, September 7th. Eidemiller received 20 votes to gather the large majority of the 24 votes cast in the school election. Others received write in votes were Kirby Wilson, Mrs. M. F. Walsh and T. J. Trostle. Trostle was the trustee whose term expired this year.

Mr. Eidemiller was given the oath of office at a special meeting of the school board Tuesday night by O. D. Douglas, school board clerk and treasurer.

Gem Dist. Board sets water levy

The Gem Irrigation district board met Tuesday evening a the office of the South Board of Control and set the water levy at \$4.50 per acre for operation and maintenance, which is 25 cents lower than last year's levy. The levy for construction remains the same as last year, which is \$2.10 per acre.

Opaline-Givens Springs club hold meet

The Opaline Givens Springs club held the September meeting at the Givens and Johnstone homes with Dorthy Johnston and Cecelia Givens as hostesses. After a short business meeting the guests enjoyed a social hour and refreshments were served, and Pollyanna birthday gifts were received by members having birthdays in September. The October meeting will be held at the home of Mrs. Ruby Harris with a gift exchange, and Pollyannas drawn for the following year.

Mr. and Mrs. Gilbert Coulter of Callaway, Nebr., were recent visitors at the homes of Mr. and Mrs. Harry Prescott and Mr. and Mrs. Ray Hall.

Mrs. Nolan Prescott entertained the members of the Royal Neighbors in her home Tuesday.

Miss Florence Ihli was an overnight guest of Mrs. Clarence Haines Thursday night and attended a teachers meeting at Marsing Friday. Miss Ihli who taught in Grandview last year was a former resident of Givens Springs and attended grade school here. She also taught at Opaline for two terms.

Mr. and Mrs. Frank Feeny attended a dinner party at the home of Mr. and Mrs. James Boldon at Nampa Wednesday'. The occasion was in honor of the Boldon's wedding anniversary.

138 years ago

September 22, 1866

NEW PAPER. First number of the Idaho Times received. Semi-weekly, published in Idaho City by J. M. Shepherd, C. D. Vjen and M. D. Hathaway. Motto: "Devoted to the interest of the community in which we live, free and independent." Free whisky and independently poor, perhaps; but then we're prejudiced as to mottoes, proverbs, and the like, in general. "The Times" is nicely printed and will be of great value to the business interest of Boise Basin, a much need institution. Success.

MAJOR WALKER, Commanding the Post at Camp C. F. Smith, gave us a call on his way to Boise on Thursday. He visits this place and Boise for the purpose of procuring material, supplies, &c., necessary at Camp. On Saturday last he destroyed an Indian camp and a large quantity of provisions at the head of Trout Creek, in the direction of Queen River from his camp. This will oblige Mr. Indian to hunt a different vicinity for winter quarters, as he cannot replace the destroyed stores in the neighborhood of his troublesome haunts. Major says he will soon have a full company of cavalry and then he will be enabled to punish Lo for past find Indians, but his command has been composed of poorly mounted Infantry, and not enough of them for post and field duty. Major is earnestly at work and will leave no effort in his power undone to protect the settlers and travel and make peaceable Indians in the only certain way, killing them. His recent promotion for that of Captain to Major is a deserved tribute to him as an office and man.

MORE TROOPS. Another company of Calvary is on its way to the Owyhee river country. It camped at Washoe Ferry, on Snake River, on Wednesday night, and is under command of Col. O'Ryan.

WANTED. A jail in Silver, built on or near a good quarry. We are not certain to the legal rights of officers to subject petty offenders so hard bare in addition to imprisonment, but the law should provide. The peace of this is nightly disturbed by man crazy with whisky. They quarrel, fight, shoot and make it next to impossible or any person to get a quiet night's rest on either side of Washington street. Last Saturday morning, at daylight, several shots were fired from across the street and in and around the saloons. It is nothing in the shootites" fired to say that if they hit their mark it would do good, and the community be better off if a few of the rowdies are occasionally shot to death; for promiscuous shooting is as liable to make a good man the subject of a funeral as one of no account. Every person, who is any manner disturbs the peace, whether drunk or sober, should be severely punished; but the inconvenience of the jail or any prison facilities readers it very difficult for the officers to deal with offenders as they deserve. Something should be done in the premises. We know of no public building so much needed here as a secure jail house.

A RUMOR obtained credence in the early part of the week that the Indians attacked the settlement on Catharine creek and killed four men on Jennings' ranch. The stock was stampeded, nothing more. It is not certain that Indians were in the vicinity.

IDAHO MAIL. Hill Beachy arrived in this city a few days ago, and is now engaged in perfecting arrangements for the mail route from this city to Owyhee, which went into operation the first of this month. He is confident of successfully establishing a tri-weekly mail route, provided the Government will give him protection from the Indians north of Humboldt which is the intention of the authorities as soon as the cavalry company, which is now being organized in this city, is fully equipped and armed. This is as it should be, an shows that General Halleck is fully aware of the importance of keeping this route open, which is also a matter of importance to every business man in this community, and who will feel grateful to Gen. Halleck for his assistance. The mail stage leaves the post office every other day, direct for Idaho City, via Dun Glen, Humboldt, Ruby and Silver City, Owyhee, and Boise and Idaho City, Time through, six days.

Commentary

Baxter Black, DVM



On the edge of common sense

The cement pour

“Have you seen Mauna Loa?” I asked Will.
“No,” he replied, as a foot high wall of concrete began covering his boot toes.
“It’s a volcano in Hawaii,” I explained.
The cement truck driver added to our education by pointing out that 5 yards of concrete weighs 20,000 pounds. It’s not that we were complete novices around cement, sand and gravel. We have poured footings, built rock walls, patched old water tanks, shoveled out feed bunks and irrigation ditches, and driven over lots of concrete cattle guards. But alas, in retrospect we put too much faith in plywood and drywall screws.
We built a form. It looked good, but then again I live in a land where the illusion of a fence is considered as good as five strands of bob wire and a post every eight feet. We stack things against rusty wire and make extensive use of stays fashioned from willow branches, mesquite limbs, string, BBQ grills, car parts, hoe handles, cardboard, pillowcases and coyote hides.
The form was to be for a free standing stem wall, 4’ x 2’ x 16’, thus 4.74 cu. yards. It was plumbed, braced and photographed for the archives. 7 a.m. on the dot the giant concrete truck rumbled in. The driver backed up to the spot and swung his long chute out over the open top of our form. It looked like the dull oviposter on a gargantuan wasp squatting over a tarantula’s hole.
In retrospect, I realize the driver had probably seen “cowboy projects” before and anticipated excitement. “Are you ready?” he asked gleefully. “Let’er rip!” I said like a man in front of a firing squad.
Standing next to a cement mixer truck as tons of gravely concrete roll down the chute can rattle your brain. As the cement reached the 2’ level, the sides of the form began to bulge. Will asked, “Do you have any cardboard?” An interesting question, I remembered thinking. Something General Custer might have asked as the Indians closed in on him.
We tried to stem the bulge by driving stakes in the ground but the gray mass simply wedged its shoulder under the form and lifted it off the ground!
“STOP!” The churning mixer stopped. Another 900 lbs of concrete clattered into the form. A tide of lava surged from underneath and rolled the length of 2 shovel handles before it sludged to a stop at Will’s feet.
“Mauna Loa?” he repeated, “never seen it.”
“Yeah,” I said, “But now you don’t have to...”

Wayne Cornell



Not important ... *but possibly of interest*

When kids could be kids

I sometimes got the feeling Mother was glad when Father burned down the chicken house. She didn’t have to give her annual “you’re going to burn down the chicken house” speech anymore. And whenever she wanted the last word in a discussion with Father, she brought up the fact that he had done just exactly what she predicted he would do. Dad kept quiet. But he got his revenge.
Not long after World War II ended, Father decided he wasn’t cut out to be a farmer. He rented the cropland to a neighbor and got a job as foreman at a weekly newspaper in a neighboring community. Mother worked as a part time correspondent for the same publication. Her job was to write up all the club meetings, bridal and baby showers, weddings and anniversary celebrations that occurred in our area.
And it came to pass that a local couple suddenly got married. The word on the street was the decision to tie the knot was hastily made after the bride’s doctor told her she was eating for two.
Society in those days frowned on brides who already were pregnant. Such events were the talk of the community. On the day anybody got married, the town’s busybodies put a big “X” on that date on the calendar. If a blessed event occurred less than nine months after X Day, it was the talk of the town. But it always was discussed in hushed tones behind closed doors. Mom knew the details of the quickie wedding, but she did her civic duty as a weekly newspaper reporter. She wrote a nice article, detailing the ceremony, who attended and who wore

what. She made sure there wasn’t a hint scandal in her story.
Mom gave her completed wedding report to Dad. He took it to the newspaper office where it was set in type just as Mom had written it. It appeared in the next edition.
Our father didn’t have a reputation as a practical joker. But I guess Mom’s wedding story was just too good an opportunity to pass up. Pop sat down at the typesetting machine and created an “alternative headline” to the one that ran in the edition delivered to the general public. He then printed one special copy of the paper that included the replacement headline.
When Dad got home from work that night, Mom wasn’t around. He tossed the one-of-a-kind newspaper on the kitchen table where she would be sure to see it and went to the barn to milk the cows.
Later in the evening, Father spotted Mother driving up. He watched her disappear into the house. A few more minutes passed. Dad was outside the barn, finishing the chores, when he heard a commotion. The back door of the house burst open and Mother came out at a dead run.
“CLYYYYYDEEEEEEE!” she shrieked as she ran toward the barn, waving the newspaper wildly over her head. There was a look of genuine terror on her face.
It took several minutes to get Mom settled down enough so Dad could explain to her that she was holding the only copy of the newspaper with a headline that read, “Local Couple Weds In Simple Shotgun Ceremony.” Dad didn’t play many practical jokes. But when he did, they were memorable. I don’t think Mom married him for his sense of humor.

Farm Bureau

Railroad holds farm products hostage

By Frank Priestley, President

Amber waves of grain have been reduced to large golden piles along roadways across southern Idaho in recent weeks. Our wheat shouldn’t be piled on the ground at the weather’s mercy but elevator managers have little choice when storage bins are full and there are no rail cars available.
For the past several years we have heard promises that rail service would get better, that more cars would be available for grain shipping. It hasn’t happened yet. There have also been delays and a lack of refrigerated cars available for shipping potatoes. This forces farmers and second handlers to switch to trucks, which is more expensive but also more reliable transportation.
The trend toward more trucking and less rail use has helped move perishable commodities to market in a more timely fashion but the increased costs are getting passed down to the farm level. Idaho potatoes normally fetch a premium, especially in the major east coast markets, that helps absorb that added costs of trucking. However, with wheat, the

margins are so thin at the farm level that it doesn’t take much of an increase in cost to render the year’s crop non-profitable.
We believe that railroad mergers have resulted in reduced service for agriculture and that competition could be an answer to this problem. Granted, it’s not a simple problem to solve. More cars might clog the system slowing everything down. Higher capacity rail cars might be part of a solution. Allowing other railroad companies to step in and compete for a share of the shipping business might also be part of the solution. Anything that has the potential to bring some fresh ideas to the table and deal with this problem should be welcomed.
The fact of the matter is what we’ve got now isn’t working while millions of bushels of wheat are sitting out exposed to the weather. Will it take a disastrous loss to fix this problem? We hope not.

Public notices

PUBLIC NOTICE
The Board of Education of Joint School District No. 365, Bruneau-Grand View School District No. 365, Bruneau-Grand View, Idaho, shall receive comments from tribal officials and parents of Indian children at its regularly scheduled meeting September 16, 2004, 7 p.m., Rimrock Jr./Sr. High School. The Board will address the participation of Indian children on an equal basis in the educational programs and the district's Impact Aid Program Application.

A copy of the Impact Aid Program Application will be sent to any parents of an Indian child who requests it in writing. Anyone wishing to address the Board should contact Superintendent Dallas Taylor at 834-2253 to request to be on the agenda.

Catherine R. Sellman
Clerk of the Board
9/15/04

NOTICE OF PROPERTY TAX INCREASE BY SCHOOL BOARD
The Marsing (Jt.) School District No. 363 has proposed to increase the amount of ad valorem tax dollars it collects by certifying a school emergency fund levy pursuant to section 33-805, Idaho Code for the period 2004-2005. The total amount of dollars to be collected pursuant to this levy is estimated to be \$76,173.00. The amount of dollars to be collected pursuant to this levy on a typical home of \$50,000 taxable value last year is estimated to be \$30.00. The amount of dollars to be collected pursuant to this levy on a typical farm of \$100,000 taxable value last years is estimated to be \$60.00. The amount of dollars to be collected pursuant to this levy on a typical business of \$200,000 taxable value last year is estimated to be \$120.00.

CAUTION TO THE TAXPAYER: The amounts shown in this schedule do NOT reflect tax charges that are made because of voter approved bond levies, override levies, supplemental levies, or levies applicable to newly annexed property. Also, the amounts shown in this schedule are an estimate only and do not include a homeowner's exemption. The dollar amounts can also vary with the certified levy and the taxable value of individual property.

9/15,22/04

**OWYHEE COUNTY COMMISSIONERS MINUTES
AUGUST 23, 2004
OWYHEE COUNTY COURTHOUSE MURPHY, IDAHO**

Present were Commissioner Tolmie, Commissioner Reynolds, Commissioner Salove, Clerk Sherburn, Fred Grant and Jim Desmond.

Natural Resources Director Jim Desmond presented the Board with recommendations by the NRC on the proposed revision of the Owyhee County Sage Grouse Plan. After reviewing the revision of the Management Plan the Board moved to adopt Resolution No. 04-23, accepting the Recommendation of the Owyhee County Natural Resources Committee on Revisions to the Owyhee County Sage Grouse Management Plan.

The Board approved Certificate of Residency Affidavits for students attending CSI for the fall Semester of 2004.

The Board took action on the following pending Indigent & Charity cases presented. I.C. #04-39 a lien was approved. I.C. #04-41 a lien was approved I.C. #04-35 approved payment of medical bills with reimbursement. I.C. #04-34 approved payment of medical bills with reimbursement. I.C. #02-32 approved releasing a medical lien.

The Board conducted a hearing on I.C. case # 04-12 reconsideration of a prior denial requested by St. Al's. Hearing officer Fred Grant took testimony from those present. After hearing and considering all testimony the Board moved to deny, the county is not the last resource.

The Board moved to approve the minutes for the August 16th meeting.

At 1:45 p.m. the Board moved into executive session to discuss a land issue. The Board recessed the executive session at 1:55 p.m. No action was taken.

Mike McGowen, Tiffany Lloyd and Lance Nelson with DEQ met with the Board to discuss the water issue on the Sunset Ranch Subdivision. EPA is working on ways to solve the water problems, and DEQ expressed their desire for that process to continue.

At 2:40 p.m. the Board moved into executive session to discuss a personnel issue. The Board moved out of executive session

at 2:55. No action was taken.

There being no further business the Board moved to adjourn.

The complete minutes can be viewed in the clerk's office.

Harold Tolmie, Chairman
Attest: Charlotte Sherburn
9/15/04

PUBLIC HEARING BEFORE THE OWYHEE COUNTY PLANNING AND ZONING HEARING EXAMINER
On October 6, 2004 the Owyhee County Hearing Examiner will hear the following Planning & Zoning cases, in the Courthouse Annex 17069 Basey Street, Murphy, Idaho, at the times stated below.

GERALD & TEDDI JO PROUD 2:00PM Applicants have filed an application for a conditional use permit to establish residential use on approximately 36 acres. Subject property is located north west of Homedale, off of Highway 19 and Gulley Road in Section 36, Township 4 North, Range 6 West Boise Meridian, Owyhee County, Idaho

PEGGY JACKSON - 2:15PM Applicant has filed an application for a conditional use permit to split approximately 6 acre parcel from a 15 acre parcel for residential use owned by Douglas Larzelier. Subject property is located west of Homedale, off of Highway 19 and King's Way Drive in Section 5, Township, 3 North, Range 5 West, Boise Meridian, Owyhee County, Idaho

DOUGLAS LARZELIER – 2:30PM Applicant has filed a request for modification of special conditions placed on a conditional use permit approval for a gravel extraction operation. Applicant requests that conditions e, f and h be rescinded. These special conditions as set forth in the November 7, 2002 decision of approval read: “e. The number of loads will be limited to ten (10) per day for five (5) days of the week.” “f. The hauling of product will be conducted during the normal business hours of 8 AM to 5 PM.” “h. The operation is permitted to operate for three (3) years from the issuance of this permit, after which time Applicants must present to the Commission an application to continue the operation.” Subject property is located west of

Homedale north of Highway 19, is accessed via Kings Way Drive and is in Section 5, Township 3 North, Range 5 West, Boise Meridian, Owyhee County, Idaho.

9/15/04

**NOTICE OF HEARING
CASE NO. SP-04-02117M
IN THE DISTRICT COURT FOR THE THIRD JUCICIAL DISTRICT OF THE STATE OF IDAHO AND IN FOR THE COUNTY OF Owyhee**

IN RE: Christopher Terrance Barnes.

A Petition by Christopher Terrance Barnes born on 6/21/88 in Boise, State of Idaho now residing at 4150 Clark Island Ln., Homedale, proposing a change in name to Christopher Terrance Anders has been filed in the above entitled court, the reason for this change in name being to have my stepfather's last name: The petitioner's father is living.

Such petition will be heard at 11:00 o'clock a.m. on 10/6/04, at the Homedale County Courthouse. Objections may be filed by any person who can, in such objections, show to the court a good reason against such a change of name.

WITNESS my hand and seal of said District Court this 16th day of August, 2004.

By Vickie Lynn, Clerk
8/25-9/1,8,15/04

**NOTICE OF INTENTION TO DECLARE DEFAULT
CASE NO. SP AT 0400074M
IN THE DISTRICT COURT OF THE FOURTH JUDICIAL DISTRICT OF THE STATE OF IDAHO, IN AND FOR THE COUNTY OF ADA**

In the Matter of the Termination of the Parental Rights of: LISA ANTONETTE BARROW, (AKA SIEBEL, AKA MCGREGOR) AND, GARY LEE BARROW,

And

In the Matter of the Adoption of: JAKE CHRISTOPHER BARROW AND TYLER ANDREW BARROW, Minor Children.

TO: LISA ANTONETTE BARROW, (AKA SIEBEL, AKA MCGREGOR).

YOU ARE HEREBY notified that Petitioner, LOIS J. RAUSCH, herein will take default Judgment against you as prayed for in their Petition for Termination of Parent/Child Relationship and Adoption on the grounds and for the reasons that you have failed and neglected to make answer to said Petition, and that more than twenty (20) days have elapsed since the service of said Petition and Summons on you.

That said Judgment as prayed for will be taken on the 3rd day of December, 2004 at 9:00 o'clock a.m., or as soon thereafter as counsel can be heard.

CERTIFICATE OF SERVICE: The undersigned does hereby certify that on this date he caused a true and correct copy of the within and foregoing NOTICE OF INTENTION TO DECLARE DEFAULT to be mailed by United States first-class, post-

age prepaid mail to the last know address of Lisa Barrow, 215 W. Washington Avenue, Cambridge, Idaho, 83610 and published once a week for three consecutive weeks in The Owyhee Avalanche newspaper.

DATED this 25 day of August, 2004.

STOPPELLO & KISER
ATTORNEYS AT LAW
BY F. Matthew Stoppello, of the firm
Attorneys for Petitioner
620 West Hays Street
Boise, Idaho 83702
Telephone: (208) 336-1020
Facsimile: (208) 336-1027
ISB No. 1270 and ISB No. 6303
9/8,15,22/04

**ANOTHER SUMMONS
CASE NO. CV-04-772
IN THE DISTRICT COURT OF THE SEVENTH JUDICIAL DISTRICT OF THE STATE OF IDAHO, IN AND FOR THE COUNTY OF BINGHAM**

PROGRESSIVE INSURANCE COMPANY, Plaintiff,
Vs. GERARDO CORNEJO AGUILERA, Defendant.

TO: GERARDO CORNEJO AGUILERA

You have been sued by Progressive Insurance Company, Plaintiff, in the District Court in and for the State of Idaho, Case No. CV-04-772.

The nature of the claim against you is for payment of a subrogation claim on an accident where you did not have insurance.

Any time after 20 days following the last publication of this summons, the court may enter a judgement against you without further notice, unless prior to that time you file a written response in the proper form, including the case number and pay any required filing fee to the Clerk of the Court at 501 North Maple, Blackfoot, Idaho 83221 and serve a copy of your response to the Plaintiff's attorney, Stephen J. Blaser, PO Box 1047, Blackfoot, ID 83221, (208) 785-4700.

A copy of the Summons and Complaint can be obtained by contacting either the Clerk of the Court or the attorney for the Plaintiff. If you wish legal assistance, you should immediately retain an attorney to advise you in this matter.

DATED and signed this 24th day of July, 2004.

CLERK OF THE COURT
By: Claudia J. Christian
9/1,8,15,22/04

Rubber Stamps

Made to order

The Owyhee Avalanche

337-4861

NOTICE OF PENDING ISSUANCE OF TAX DEED GEM IRRIGATION DISTRICT Owyhee County, Idaho					
NOTICE IS HEREBY GIVEN that in accordance with Title 43, Chapter 7, of the Idaho State Code, on December 31, 2004, the period of redemption for delinquent entries made January 1, 2002, shall expire and the Gem Irrigation District, or its assign, shall be issued a tax deed for the property described below, upon which such delinquent entries were made. The property described below may be redeemed on or before December 31, 2004, by paying to the Gem Irrigation District at its office in the City of Homedale, County of Owyhee, the delinquent assessments for which the delinquent entries were made, plus a penalty of two percent (2%) thereon, interest on the total at the rate of one percent (1%) per month from the day said delinquent entries were made until the day of redemption, and recording and publication costs.					
Person Assessed	Property Description	Year Assessed	Delinquent Assessment & Penalty	Interest to 12/31/04	Misc. Costs
Angela Mercado	Lot 18 Block 9 Sunset Ranch Sec. 36, T4N R6W	2002	27.91	9.90	
Luis & Micaela Garza	Pt SW1/4 NW 1/4 Sec. 14, T3N R5W	2002	96.87	34.20	
Dated this 9 th day of September, 2004 GEM IRRIGATION DISTRICT Connie Chadez, Treasurer 9/15,22/04					

Public notices

NOTICE OF TRUSTEE’S SALE

On Tuesday, the 28th day of December, 2004, at the hour of 10:00, o’clock a.m. of said day (recognized local time), at Owyhee County Courthouse located at HWY 78, Murphy, ID 83650, in the County of Owyhee, State of Idaho, Michael L. Schindele, as Successor Trustee, will sell at public auction, to the highest bidder, for cash, in lawful money of the United States, all payable at the time of the sale, the following described real property, situated in the County of Owyhee, State of Idaho, and described as follows, to-wit:

See Exhibit “A” which is attached hereto and by this reference made a part of.

The Trustee has no knowledge of a more particular description of the above-referenced real property, but for purposes of compliance with Idaho Code, Section 60-113 Idaho Code, the Trustee has been informed that the address of 5015 East Ustick #180, Caldwell, ID 83605 may sometimes be associated with said real property.

Said sale will be made without covenant or warranty regarding title, possession or encumbrances to satisfy the obligation secured by and pursuant to the power of sale conferred in the Deed of Trust executed by Le-Roy Earl Babcock and Barbara Shay Babcock, as Grantor(s), to Pioneer Title Company, as Trustee, Michael L. Schindele, as Successor Trustee, for the benefit and security of American General Finance, Inc., as Beneficiary, said Deed of Trust dated August 13, 1997, and recorded August 15, 1997, as Instrument No. 222562, Mortgage Records of Owyhee County, Idaho.

THE ABOVE GRANTORS ARE NAMED TO COMPLY WITH SECTION 45-1506(4)(A) IDAHO CODE. NO REPRESENTATION IS MADE THAT THEY ARE, OR ARE NOT, PRESENTLY RESPONSIBLE FOR THIS OBLIGATION.

The default for which this sale is to be made is the failure to pay when due, under Deed of Trust Note dated August 13, 1997, the monthly payments for principal, interest and impounds of \$984.87, for the month(s) of June 10, 2004, through the current month and year, and all subsequent payments until the date of sale or reinstatement with all accrued interest, late charges and expenses. The principal balance owing as of this date on the obligation secured by said Deed of Trust is \$79,529.38, plus accruing interest. All delinquent payments are now due, together with accruing late charges and interest, unpaid and accruing taxes, assessments, trustee’s fees, attorney’s fees, and any amounts advanced to protect the security associated with this foreclosure and that the Beneficiary elects to sell or cause the trust property to be sold to satisfy said obligation.

DATED this 23rd day of August, 2004.

MICHAEL L. SCHINDELE
Successor Trustee
P.O. Box 1990
Boise, Idaho 83701

Telephone: (208) 342-2241
EXHIBIT A

A part of the Northeast Quarter of the Northwest Quarter of Section 15, Township 3 North, Range 5 West, Boise Meridian, Owyhee County, Idaho.

BEGINNING at the Northeast corner of said Northeast Quarter of the Northwest Quarter (N1/4 corner) said corner monumented with an aluminum capped monument; thence

South 0° 35’ 42” East, a distance of 968.43 feet along the Easterly boundary of said Northeast Quarter of the Northwest Quarter to a point on the centerline of an existing field ditch, said point monumented with a 5/8 inch diameter iron pin; thence

North 81° 12’ 40” West, a distance of 629.60 feet along the centerline of said existing field ditch to a 5/8 inch diameter iron pin; thence

North 0° 35’ 42” West, a distance of 301.42 feet parallel with the Easterly boundary of said Northeast Quarter of the Northwest Quarter to a point on the centerline of an existing ditch, said point witnessed with 5/8 inch iron pin 10 feet Southerly; thence

South 77° 59’ 35” East, a distance of 575.03 feet along the centerline of said ditch to a point witnessed with a 5/8 inch iron pin 10 feet Northerly; thence

North 0° 35’ 42” West, a distance of 690.07 feet parallel with the Easterly boundary of said Northeast Quarter of the Northwest Quarter to a point on the Northerly boundary of said Northeast Quarter of the Northwest Quarter to the POINT OF BEGINNING.

North 89° 39’ 40” East, a distance of 60.00 feet along the Northerly boundary of said Northeast Quarter of the Northwest Quarter to the POINT OF BEGINNING.

SUBJECT TO a non-exclusive road easement lying 30.00 feet on each side of the following described centerline;

COMMENCING at the Northeast corner of said Northeast Quarter of the Northwest Quarter (N1/4 corner); thence

South 89° 39’ 10” West a distance of 30.00 feet to the BEGINNING POINT of said road easement; thence

South 0° 35’ 42” North a distance of 963.60 feet along the centerline of said road easement to a point on the Southerly boundary of the above described parcel, said point being the TERMINUS POINT of said road easement.

9/15,22,29; 10/6/04

NOTICE OF TRUSTEE’S SALE

The following described property will be sold at public auction to the highest bidder, payable in lawful money of the United States, at the entrance to the Owyhee County Courthouse, Highway 78, Mile Marker 29 1/2, Murphy, ID 83650, on 12/21/2004 at 11:30 am, (recognized local time) for the purpose of foreclosing that certain Deed of Trust recorded 01/12/2004

as Instrument Number 246436, and executed by MILTON E CLEGG, as Grantor(s), in favor of MORTGAGE ELECTRONIC REGISTRATION SYSTEMS, INC., as Beneficiary, to STEWART TITLE OF BOISE, INC., the current trustee of record, covering the following real property located in Owyhee County, State of Idaho:

Lot 3, Block 1, Claytonia Subdivision, Owyhee County, Idaho, according to the official plat thereof, recorded June 3, 1999 as Instrument No. 228758, in the office of the recorder of Owyhee County, Idaho.

The Trustee has no knowledge of a more particular description of the above referenced real property, but for purpose of compliance with Idaho Code, Section 60-113, the Trustee has been informed that the street address of , 6054 Claytonia Way, Marsing, ID. 83639 is sometimes associated with said real property.

Bidders must be prepared to tender the trustee the full amount of the bid at the sale in the form of cash, or a cashier’s check drawn on a state or federally insured savings institution. Said sale will be made without covenant or warranty, express or implied, regarding title, possession or encumbrances to satisfy the obligation secured by and pursuant to the power of sale conferred in that certain Deed of Trust.

The default for which this sale is to be made is:

Failure to pay the monthly payment due 03/01/2004 of principal, interest and impounds and subsequent installments due thereafter; plus late charges, with interest currently accruing at 6.375% per annum; together with all subsequent sums advanced by beneficiary pursuant to the terms and conditions of said Deed of Trust, and any supplemental modifications thereto. The principal balance owing as of this date on said obligation is \$72,000.00, plus interest, costs and expenses actually incurred in enforcing the obligations thereunder and in this sale, together with any unpaid and/or accruing real property taxes, and/or assessments, attorney’s fees, Trustees’ fees and costs, and any other amount advanced to protect said security, as authorized in the promissory note secured by the aforementioned Deed of Trust.

Therefore, the Beneficiary elects to sell, or cause said trust property to be sold, to satisfy said obligation.

Notice is hereby given that this firm is attempting to collect a debt and any information obtained will be used for that purpose, and that the debt may be disputed. The above grantors are named to comply with Section 45-1506(4)(a) Idaho Code. No representation is made that they are, or are not, presently responsible for this obligation.

DATED: August 10, 2004
STEWART TITLE OF BOISE, INC.

Successor Trustee
Linda D. Irwin, Trust Officer
Name and Address of the Current Trustee is:

STEWART TITLE OF BOISE,

INC.
9196 West Emerald, Suite 100
Boise, ID 83704
(800) 281-8219 for information.

8/25-9/1,8,15/04

NOTICE OF TRUSTEE’S SALE

Trustee’s Sale No. 02-WG-36801

Notice is hereby given that, Regional Trustee Services Corporation, the duly appointed Successor Trustee, will on January 4, 2005, at the hour of 11:00 AM, of said day, on the steps of the Owyhee County Courthouse, located at the corner of Highway 78 and Hailey Street, Murphy, ID, sell at public auction to the highest bidder, for cash, in lawful money of the United States, all payable at the time of sale, the following described real and personal property (hereafter referred to collectively as the “Property”), situated in the County of Owyhee, State of Idaho, to-wit: Lots 15 and 16, Block 11, Amended Plat of the Townsite of Homedale, Boise Meridian, Owyhee County, Idaho, according to the Official Plat thereof, Records of Owyhee County, Idaho. The Trustee has no knowledge of a more particular description of the above-referenced Property but, for purposes of compliance with Section 60-113 of Idaho Code, the Trustee has been informed that the address of 502 W California Ave, Homedale, ID 83628, is sometimes associated with said real property. Said sale will be made without covenant or warranty regarding title, possession or encumbrances to satisfy the obligation secured by and pursuant to the power of sale conferred in the Deed of Trust executed by Mike R Lucero and Glenda L Lucero, husband and wife, as Grantor, to Pioneer Title Company of Canyon County, as Trustee, for the benefit and security of Long Beach Mortgage Company, as Beneficiary, dated 8/15/2001, recorded 8/21/2001, under Instrument No. 236830, Mortgage

records of Owyhee County, Idaho, the beneficial interest in which is presently held by Wachovia Bank, N.A., f/k/a First Union National Bank, as Trustee for Long Beach Mortgage Loan Trust 2001-4. The above Grantors are named to comply with Section 45-1506(4)(A), Idaho Code. No representation is made that they are, or are not, presently responsible for this obligation. The default for which is sale is made is the failure to pay when due under the Deed of Trust Note dated 8/15/2001, the monthly payment which became due on 9/1/2003 and all subsequent monthly payments, plus late charges and other costs and fees as set forth. Amount due as of August 26, 2004 Delinquent Payments from September 01, 2003 1 payments at \$682.61 each \$682.61 11 payments at \$681.92 each \$7,501.12 (09-01-03 through 08-26-04) Late Charges: \$292.40 Beneficiary Advances: \$1,753.80 Suspense Credit: \$0.00 Total: \$10,229.93 All delinquencies are now due, together with unpaid and accruing taxes, assessments, trustee’s fees, attorney’s fees, costs and advances made to protect the security associated with this foreclosure. The principal balance is \$72,353.12, together with interest thereon at 10.750% per annum from 8/1/2003 to 10/1/2003, 10.750% per annum from 10/1/2003, until paid. The Beneficiary elects to sell or cause the trust property to be sold to satisfy said obligation. Anyone having any objection to the sale on any grounds whatsoever will be afforded an opportunity to be heard as to those objections if they bring a lawsuit to restrain the same. Dated: August 26, 2004 **Regional Trustee Services Corporation, Trustee** By -- c/o Regional Trustee Services Corporation, 616 1st Avenue, Suite 500, Seattle, WA 98104 Phone: (206) 340-2550 Sale Information: <http://www.rtrustee.com> ASAP608670
9/15,22,29-10/6/04

WE MAKE A GREAT IMPRESSION



You'll be impressed by the quality of our work and our personalized service

We're a multi-faceted print shop providing complete services from graphic design and typesetting through printing and binding, so no part of your job ever leaves our hands.

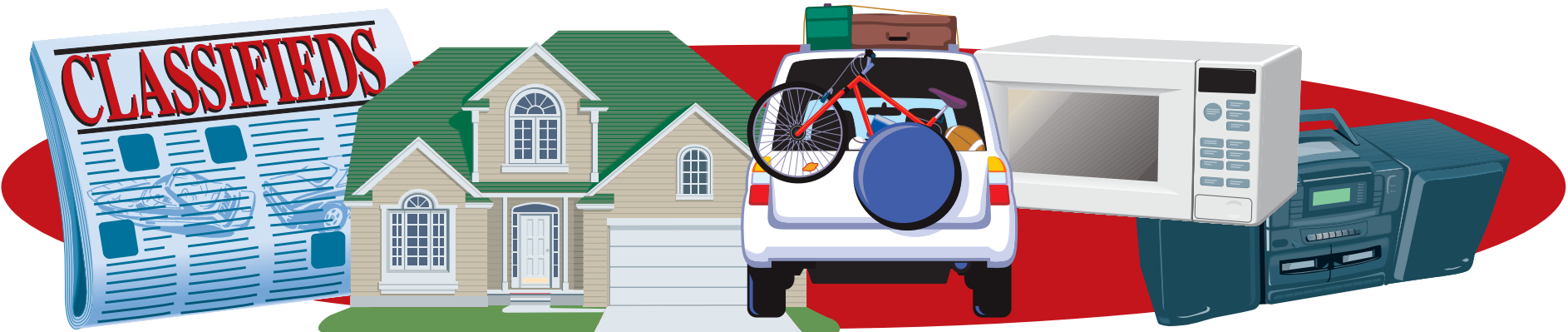
We offer consistent results at competitive prices.

337-4866

All types of web and commercial printing

Owyhee Publishing

P.O. BOX 217 HOMEDALE, ID 83628



FOR RENT
10x10 & 5x10 storage space, RV & boat storage, Marsing Storage 343-9855 or 867-2466
Roommate wanted, country home, pets negotiable, Non-smoker \$250 + utilities. 249-2088
3 bed 1 bth cute & clean \$450 mo. + \$300 dep. Manufactured home on it's own lot. 585-6059
Newer 3 bed 2 bth home. Landscaped, fenced yard with all the amenities. Silversage Sub Division in Homedale \$825 mo. 337-5716
3 bed 1 bth house for rent. 523 W. California, Homedale \$450 mo. + \$100 dep. 337-4240 or 573-8994
House for rent. Now accepting applications. Cute older 2 bdrm recently remodeled. New carpet, linoleum, paint, roof & appliances, W/D hook-up, large shop, Sicha approved. Available Sept.10th \$450. Mo. plus deposit 337-3857 or 250-0720

NOTICE
No Fat Low Carbs! Tomatoes, cucumbers, squash, green beans, cantaloupe, eggplant, grapes, pears, pickling cucumbers, fresh baked goods and much more. If you don't see what you want please ask. Farmers Market Homedale First Presbyterian Church parking lot. Corner 6th & Washington, Sunday mornings 9:00 to 1:00.

WANTED
Wanted to buy land owners bull elk & buck deer tags, Unit 40. 208-870-0124
Donations wanted for Family Farm Days/Vision Bible Church garage sale and or auction. For pickup please call 896-5407. Thank you for your help.

FREE
Free kittens need a good home. 541-339-4139

HELP WANTED
Dependable outgoing staff to work with developmentally disabled adults & children. Bilingual, HS diploma or GED, valid driver's license & finger printing mandatory. Tammy 461-0438 or fax resume to 461-0446 Pay DOE.
Auto parts counter person. Have extensive automotive know-how. Good reading & writing a must. Wage DOE. Pick up application at Harvey's 211 Main, Marsing.
Wanted high school varsity basketball coach, Jordan Valley HS. Experience desired. Contact Michael Sessions @ 541-586-2213.
Part-time bartender wanted at Murph's. 3 to 4 shifts. Call Carol 337-4479.
National Janitorial Company seeking self motivated, team members for P/T employment. Please call 724-3016.

HELP WANTED
Driver/Thrower position available. Physical labor involved. Applicants must be at least 21 years of age and possess a clean driving record. CDL needed. Please call for details 337-4359.

THANK YOU
The family of Bob Paxton would like to express our appreciation to all the family and friends for their outpouring of support during a most difficult time. Special thanks to Jennie and staff at XL Hospice and to John Edney for the special gift to Bob and family. Thanks, also, to those in our community who provided food and support at Bob's Celebration of Life at the Marsing Community Center. Florence Paxton, Colleen Lowder & Family, Bob, Matt & Jim Paxton and families.

THANK YOU
A card of thanks due to the sudden loss of our loved one Yvonne Whitman. Every card, phone call and visit was deeply appreciated. A special thanks to Pastor Chuck Ryan and the Mountain View Church of the Nazarene for the services, and the lovely meal they provided and also to Paul's Market for the gifts of food. From Yvonne's family, Boyd & Betty Eoff and family. The Whitman family & the Hunt Family.

Homedale Public Library staff thank all those who contributed to the yard sales to benefit the library. We appreciate each one of you. Items remaining were taken to the Idaho Youth Ranch store in Caldwell.

School menu

September 16-22

Marsing

Sept 16: Texas fries, fruit, vegetables, milk, chicken fajitas, fresh salad bar 4th-12th, roll.
Sept 17: Chicken Alfredo, fruited jello, vegetables, milk, french dip, fresh salad bar 4th-12th, roll.
Sept 20: Nachos w/toppings, refried beans, fruit, milk, Red Baron pizza, fresh salad bar 4th-12th, roll.
Sept 21: Baked chicken, mash potatoes, corn, fruit, milk, burrito w/fixings, fresh salad bar 4th-12th, roll.
Sept 22: Waffles w/syrup, scrambled eggs, ham, strawberries w/whip topping, milk.

Homedale Elementary

Sept 16: Chicken or beef nuggets, broccoli, peaches, cinnamon roll, milk.
Sept 17: Pizza or pop corn chicken, salad, pineapple, cookie, milk.
Sept 20: Hamburger or fish patty/bun, fries/tots, apricots, cookie, milk.
Sept 21: Chicken tenders or CF beef steak, mash potatoes/gravy, roll, peaches, milk.
Sept 22: Crispito or tst cheese sandwich, taco salad, applesauce, churro, milk.

Homedale Middle

Sept 16: Chicken tenders or CF beef steak, mash potatoes/gravy, roll, fruit bar, milk.

Sept 17: Lasagna or chicken pot pie, french bread, fruit & veggie bar, milk.
Sept 20: Hamburger or hot dog, fries, fruit & veggie bar, cookie, milk.
Sept 21: Chicken or beef nuggets, fruit & veggie bar, cinnamon twist, milk.
Sept 22: Burrito or fish patty, corn, fruit & veggie bar, dessert, milk.

Homedale High

Sept 16: Chicken patty or hamburger/bun, fries/tots, fruit & veggie bar, dessert, milk.
Sept 17: Chicken taco or sandwich choice, corn, fruit & veggie bar, milk.
Sept 20: Pizza or nacho bar, salad, fruit & veggie bar, dessert, milk.
Sept 21: Chicken nuggets or hot dog, rice, green beans, fruit & veggie bar, milk.
Sept 22: Idaho haystack or burrito, fruit & veggie bar, cinnamon roll, milk.

Bruneau

Sept 16: Cheese yum, chicken noodle soup, celery & peanut butter, oranges, milk.
Sept 17: Hamburger/bun, fries, carrot sticks, banana half, cookie, milk.
Sept 20: Pizza, salad, corn, pineapple, milk.
Sept 21: Sub sandwich, tots, oranges, brownie, milk.
Sept 22: Enchilada pie, salad, garlic bread, fruit, milk.

A dog-gone good deal ...

A subscription to this newspaper provides the reader with all kinds of value:

Local news and photo coverage, historical items, commentaries, special sections, legal notices of all public entities within the county plus water filings in Owyhee County, commissioners' minutes ... the list goes on and on.

Give us a call, and we'll start your subscription with the next issue! If you're not pleased during the first month, we'll give you a full refund!

MasterCard

Subscription Rates:

Owyhee County.....	\$31.80
Canyon, Ada and Malheur Counties.....	\$37.10
Elsewhere	\$40.00

Idaho Sales Tax included

VISA

NAME _____

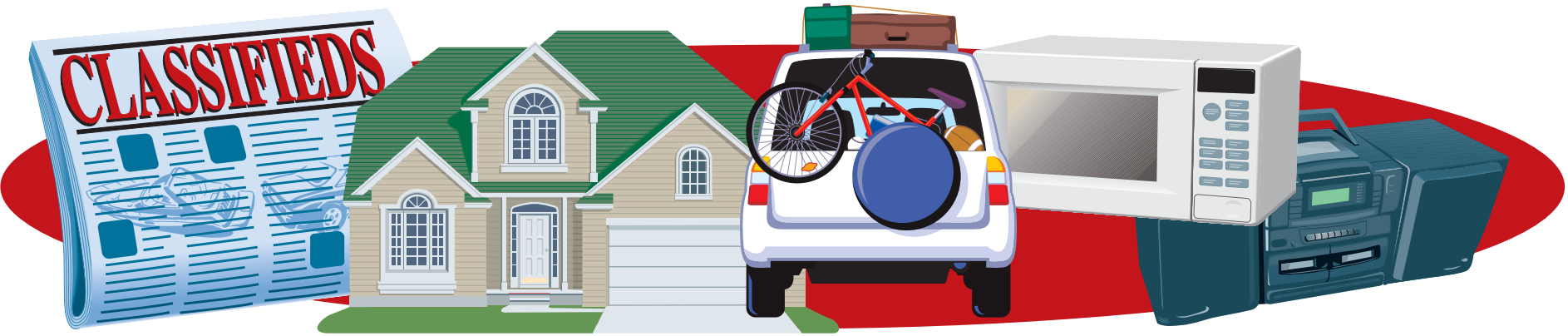
ADDRESS _____

CITY _____

STATE__ZIP _____

The Owyhee Avalanche

P.O. BOX 97 • HOMEDALE , ID 83628



REAL ESTATE

Price reduced from \$60,000!
Owner in nursing home. 3 br; 1-3/4 bath; d/w; range; fridge. Wood stove and oil heating. Irrigation; new water heater & softener. Furnace 5 years old. Cyclone fence; garden area; patio; dbl car port w/storage. Separate storage shed in back with a working freezer. Downtown Marsing. \$49,500. Call Nova Realty 896-4195 or Mary in evening 896-5121.
Two homes or rentals. Wilder. Call for location, info, and prices. Nova Realty 896-4195 or Mary evenings 896-5121.
Newer 3 bed 2 bth home w/shop in Marsing on 5 acres. Great view, fenced \$154,900 Pete Re/Max Advantage 890-1658

**HOMES FOR SALE
READY TO MOVE IN**
HOMEDALE'S NICEST MOBILE HOME PARK

- 3 br/2 ba Nice Double Wide Only \$200/mo. with \$3,000 down
- 3 br/2 ba Double Wide \$15,900 **SOLD** with \$2,500 down
- 2 br/1 ba Built-ins, Central Air Only \$200/mo. with \$4,000 down
- 3 br/2 ba 1999 LIKE NEW Beautiful inside & out! Only \$250/mo. with \$5,000 down (Homes to remain in Park)

Sunset Village
Mobile Home Park
401 S. Main • Homedale, Idaho
See Tom - space #42
(208) 884-1700
(208) 337-5804

REAL ESTATE

South Homedale OWC. 1.79 acres \$24,900 Pete Re/Max Advantage 890-1658
South Homedale 2 homes on 1.19 acres, may be split \$115,000 Pete, Will or Stacy Re/Max Advantage 890-1658

FARM/RANCH

Custom Swathing \$13 an acre, stacking. Call Steve @ 541-339-4677
Alfalfa seed, top quality, farmer to farmer prices, delivered to your door. Many grass seeds. Ray Odermott 208-465-5280 or 1-800-910-4101
Alfalfa seed, Ranger & Vernal treated. 90¢ lb. Call 887-3450 or 409-4457
Alfalfa hay \$75 ton 896-5588 lv. Message.

YARD SALE

Yard sale Sat., Sept. 18th ONLY. 8am-3pm, 24839 Hoskins Rd., follow signs off Homedale Rd. Lots of good stuff!
Yard sale 3526 Industrial Rd., Homedale FRI & SAT 9am-?

**KNIFE
LAND CO.**
Established 1984

Free Catalog
208/345-3163

FOR SALE

Used tractor parts 100's of salvaged farm tractors and combines. Nampa Tractor Salvage, 9055 Hwy 20, Nampa, ID 83687 (208) 467-4430
Rollends: Great for packing material, building fires, lining birdcages or for your kids to doodle on. The Owyhee Avalanche, Homedale
Italian leather couch and love-seat. Brand new still wrapped in plastic. Retail \$2450. Must sell \$895. 208-888-1464
Bedroom set 5-piece cherry set. Brand new in box. List \$1450. Must sell \$399. 208-888-1464
Bed-queen pillowtop mattress set. Brand new, still in plastic. Must sell \$159. **Queen orthopedic set.** Brand new, must sell \$129. 208-866-7476
King-sized pillowtop mattress set. New, in bag, with warranty. Must sell \$199. 208-866-7476
Cherry Sleigh bed. Solid wood. New in box. Value \$850. Sacrifice \$295. 208-888-1464
Techniques digital piano, excellent condition \$1900. 896-6007
Elberta Peach sale. \$6 for half bushel at Garrett Ranches, Homedale Rd. 337-3133 M-F 9am-5pm
3 3ft. x 5 ft. vinyl grid western windows, Platinum series. Brand new. \$100 ea. Please call 337-3498 lve. Msg.
Fun piano lessons, never too young or old. All ages and levels, home schoolers/learning disabilities welcome. Reasonable rates, close to Marsing 467-6244.
Beautiful \$100,000 Fleetwood mobile home. Must sell. MUST BE MOVED! 4 bed 2 bth or trade for cows. 250-1441
For sale: 4 wheeler, trailer, camper. 1994 Honda 300 Fourtrax, new battery, good tires, runs great \$2250; 7x14 utility trailer fits 3 4-wheelers, new tires, 1 yr. Old \$1500; 16 ft. camper 1963 very good shape, new FW holding tank & water pump, new deep cycle battery, good tires \$1050. Great for hunting season! 337-5813
Book sale, Homedale Library, Sat. 9/18, 9am-4pm, 125 W. Owyhee Ave.

SERVICES

JJ Excavation and Hauling, TOP SOIL, and gravel delivery, excavator and trucks for hire. Road building, dozer, water truck and road grader. Free estimate. 208-337-4822 or 573-5700.
Dump Truck & Backhoe service, ditch cleaning & demolition. Call Steve at 465-5196 or 371-4285.
Best price in the valley for on-site computer cleaning and repair. Call Tom or Colette at 208-899-9419, Technical Computer Cleaning.
Tim's Small Engine Repair: Complete servicing & repair available on lawnmowers, tillers, wheel-line motors, motorcycles, ATVs, all 2 & 4 cycle power equipment. Karcher pressure washer factory authorized repair center. 30916 Peckham Rd., 5 miles west of Wilder. 482-7461
Owyhee Mountain Lawn Care: Lawn mowing & flower bed maintenance, pruning, fertilizing, small landscape jobs, free estimates call Tyler 880-1573
M&S Repairs & Remodels. All types of remodeling & construction, plumbing, fencing, roofing & add-ons. New homes & older homes. Call 337-5041 for estimate.

SERVICES

The Apple Tree Daycare in Marsing has full time openings for ages 2 & up. Daily preschool lessons. For info call 896-5372 or visit at 936 Franklin Street, Marsing (1 block from car wash).
Daycare 2 FT openings, WICAP approved, all meals provided, fenced play areas & lots of activities. Call Donna 337-6180. Preschool program available.
House and office cleaning made easy! Dust Bunny Cleaning Co. Low rates! Call today for more information. Tracy & Justin Thomas (541) 339-3802 or cell: 208-880-8110

HANDYMAN SERVICE
HERE TO SERVE ALL YOUR NEEDS;
Paint; Interior, Exterior
Sheetrock; Tape, Texture
Carpet; Vinyl; Tile
Roofing; Metal, Shingles
Plumbing; Water Heaters, Softeners
Fencing; Trash Removal, Etc...,
Misc Jobs.
"NO JOB TOO SMALL"
FREE ESTIMATES
ALL WORK 100% GUARANTEED.
EXCELLENT LOCAL
REFERENCES AVAILABLE
BRIAN 447-8346

COLDWELL BANKER
ASPEN
GEORGE WILSON
JOHN CONTI • STAN CAPOUCH
OFFICE: 896-5312
GEORGE: 890-4770 • JOHN: 880-7829 • STAN: 880-2414
View Properties At: www.idaholand4u.com

THIS WEEK'S SPECIAL!
COUNTRY SETTING
Large 2 bed, 1 bath. Rustic cabin setting wood floors, fireplace, trees, trees, trees. Landscaping, stone & brick. Detached shop. Large patio. \$67,500 **REDUCED**
ACREAGE • DARIES • FARMS • RANCHES • RIVER PROPERTIES

DESERT HIGH
REAL ESTATE
www.deserthigh.us

Marsing, Idaho
896-4624
Betty Stappler - Broker
Licensed in Idaho and Oregon

1.7 ACRE PARCEL W/ RIVER FRONTAGE
and Homedale Schools, \$55,000
Additional acre available

Lee Bridger Moving
AUCTION
Saturday, September 18th, 10:00 AM
Location: 1015 Hwy 19 Homedale, ID. From Homedale go west on Hwy 19 to site. Across the Hwy from Stateline store.

Vehicles • Trailers • Tools • Guns, Hunting & Camping Supplies • Household • Miscellaneous
Terms: Cash, Visa, M/C or bankable check day of auction. Everything sold as is. 10% Buyers premium.

Preview & Inspection: Friday 9/17 from 2:00 to 5:30 PM & auction morning.

FICKETT AUCTION SERVICE
THE PROFESSIONAL AUCTION SERVICE
FOR MORE INFORMATION CALL:
WWW.FICKETTAUCTIONS.COM

The Original
"Lap-top" News Source

Doesn't need Plugged in to anything.

Available anytime, anyplace

Subscribe Today!

The Owyhee Avalanche
PO Box 97, Homedale, 83628
208-337-4681 • Fax 208-337-4867



Snake River Mart



Wild Prices

Boneless Beef

Chuck Roast



\$1.59

lb.

Boneless Beef

Chuck Steak



\$1.69

lb.

50 lb. Bag Local Onions



\$5.99

ea.

1/2 Bushel Local Fruit



\$5.99

ea.

Boneless Beef

Petite Sirloin Steak



\$3.29

lb.

Boneless Beef

Stew Meat



\$1.99

lb.

Avocados



89¢

ea.

California

Green Cabbage



49¢

ea.

Western Family 8 oz.

Shredded Cheese

\$1.59

ea.

John Morrell

Franks

69¢

ea.

Western Family 12 oz.

American Singles

\$1.69

ea.

Boneless Pork

Sirloin Chops

\$2.29

lb.

Falls Brand 1 lb.

Bacon

\$2.59

ea.

Gem Pack

Bulk Weiners

\$1.69

lb.

Tomatoes

99¢

lb.

10 lb. Bag

Potatoes

\$1.39

ea.

Baker Potatoes

3lb. for \$1

Bunched

Celery

69¢

ea.

Dole Classic

Romaine Salad Mix

99¢

ea.

Limes

10 for \$1

Doritos

Tortilla Chips



Buy One Get One Free

10-13 oz.

9.5-11 oz.

2 for \$4

Fritos or Cheetos

Coca Cola Products



2 for \$7

12 Pack Cans

32 oz.

Powerade

89¢

ea.

Totino's

Party Pizza



Buy One Get One Free

9.8-11.5 oz.

6 Pack Can

Shasta Soda

Buy One Get One Free

Coors Beer

Reg/Light



\$11.99

ea.

18 Pack Can/20 Pack Bottle

Reg/Light/Ice 12 Pack Can

Busch Beer

\$6.49

ea.

Ragu

Pasta Sauce

26 oz.

Buy One Get One Free

Dinty Moore

Beef Stew

15 oz.

\$1.19

ea.

Dinty Moore

Beef Stew

24 oz.

\$2.19

ea.

Nabisco

Chips Ahoy Cookies

14-18 oz.

\$2.59

ea.

Campbell's

Chicken Noodle Soup

10.75 oz.

69¢

ea.

Kraft

Macaroni & Cheese

5 Pack

\$3.59

ea.

Propel Flavored Water

Sports Bottle

23.7 oz.

99¢

ea.

Western Family

Canned Dog Food

22 oz.

2 for \$1

Nissan

Cup O Noodles

2.25 oz.

3 for \$1

Pop Secret

Popcorn

2 or 3 Pack

2 for \$3

Malto Meal

Cereal

30-39 oz. Bag

3 for \$10

Darigold

Sour Cream

16 oz.

\$1.29

ea.

Franco American

Spaghetti & Spaghetti O's 15 oz.

2 for \$1

Golden Grain

Pasta

22 oz.

89¢

ea.

Western Family

Refried Beans

16 oz.

2 for \$1

Taco Bell Salsa

Mild & Medium

16 oz.

\$2.19

ea.

SRM COUPON

Planters Cashews & Mixed Nuts

\$2.79

EA.

9.25 oz.

SRM COUPON

Kerr & Mason Canning Jars

\$4.99

EA.

ALL SIZES

LIMIT 4 PER COUPON • PER VISIT

SRM COUPON

Kraft Macaroni & Cheese

\$2.99

EA.

5 PACK

LIMIT 4 PER COUPON • PER VISIT

SRM COUPON

Campbell's Chicken Noodle Soup

3 for \$1

10.75 oz.

LIMIT 6 PER COUPON • PER VISIT

HOURS: Mon. - Sat. 6:00 a.m. to 10:00 p.m. - Sunday 7:00 a.m. to 9:00 p.m.
Marsing, Idaho

WE RESERVE THE RIGHT TO LIMIT QUANTITIES AND CORRECT PRINTED ERRORS • PRICES EFFECTIVE 9/15/04 thru 9/21/04