

The Owyhee Avalanche

VOLUME 20, NUMBER 17

HOMEDALE, OWYHEE COUNTY, IDAHO

SEVENTY-FIVE CENTS

City audit nearly finished

Mayor says investigation continues

Homedale Mayor Paul Fink said last week that the audit of the city's finances is nearly complete and an investigation into misuse of city funds by the former city clerk is still under investigation.

Information concerning credit card charges was sent to a state investigator in February, but Fink said an investigation of this kind could take many months. Since discovering improprieties with the city's credit card, many additional budget and funding mistakes have been discovered. But Fink said most of the problems have been worked out and residents should not see increases in their taxes.

Jared Zwygart from Bai-
— to page 5



Fuzzy newborns

Six new baby owls were saved last week after a tree cutter discovered a nest of the fuzzy newborns in a tree he planned to remove. The owls, called Monkey owls, will have a safe home until they are old enough to leave their nest. See article, page 4.

Initiative workshops scheduled this week

Public hearings to follow next month

The Board of Owyhee County Commissioners will conduct three public hearings this month and four workshops that are being held this week.

Monday, the board held its first workshop in Murphy and the Owyhee Cattlemen Board of Directors gathered for a second workshop in Murphy Tuesday night. Tonight, Wednesday, a workshop will be held in the Pleasant Valley School at 7 p.m. and another workshop will be held in Marsing at the University of Idaho Owyhee County Extension Office for the Board of Directors of the Owyhee Borderlands Trust. The workshops have been scheduled for organizations, which have requested information on the Initiative draft proposal. The workshops include presenta-

tions of the components of the draft and explanation of maps by landowner representatives of the working group and the staff of the board of commissioners.

"They are designed to provide an understanding of the contents of the components, how the components work together, the intent of the work group and how the components will work in federal legislation," Initiative Chairman Fred Grant said last week.

The public hearings will begin on May 13 at the Community Center in Oreana at 7 p.m. and a second hearing will be held on May 14 at the Marsing Community Center in Marsing from 1 p.m. until 4 p.m.

A third public hearing will be held on May 17 at the
— to page 5

Mormon crickets on the march over Owyhee range

It's that time of year again when Mormon crickets have hatched and are now hungry and looking for food. Local ranchers are finding that the pesky critters are again on the march through rangeland and private land throughout Owyhee County and although slowing them down with deadly bait on private land can be done, the problem is on the range.

Paul Nettleton, of Murphy, is already fighting the critters with carbaryl bait. But he can only poison the insects on his private land as the Bureau of Land Management will not allow baiting on public land until August. Nettleton said he has found tens of thousands of the pesky katydids already this year.

"They are out early and they are out strong," longtime rancher Nettleton said Saturday as he spread carbaryl

over his property near Murphy. "We have to apply the bait around a perimeter of several thousand acres. We are doing nothing but baiting crickets."

The bait is usually oatmeal coated with the chemical insecticide carbaryl. The recommended application rate is 10 pounds to the acre. Using hand-held fertilizer spreaders can spread the bait or large machines that blow the poisoned grain a long distance. The idea is to apply a barrier of bait around or in front of a band of migrating crickets. Once the first wave consumes the bait they will die within a few minutes. The crickets coming from behind will eat the dead crickets causing a chain reaction of crickets being killed by the bait. Mormon
— to page 2



Mormon crickets have hatched in the Owyhee desert and are in larger numbers than most ranchers have seen in previous years. Local rancher Paul Nettleton said he has tracked the critters over a 15-mile stretch.

**Sheriff warns of
con artists**
page 10

Sports
pages 12-13

Extremists file suit
page 2

Voter registration for primary election closes Fri.

Owyhee County Clerk Charlotte Sherburn said last week that April 30th is the last day to register to vote in the primary election, which will be held on May 25th.

“An individual who is eligible to vote may register at the polls on election day by completing a registration card and providing proof of residency,” Sherburn said. “They must show a drivers license or identification card and proof of residency, such as a bill being sent to their home.”

Individuals residing in the mail ballot designated precincts that have not registered to vote will have to go to the courthouse in Murphy to register on Election Day.

“Those precincts are Riddle and Three Creek,” Sherburn explained. “After the primary election on May 25th residents may register at city hall, the county courthouse or download a registration form from the Internet and register by mail.”

To request an absentee ballot for the primary election, a registered voter may make a written application to the Clerk’s office for an official ballot for the primary election.

“You must request an absentee ballot by filling out an application signing it and returning it to the clerk’s office either by mail, or fax,” Sherburn said.

The application needs to be filed with the clerk not later than 5 p.m. on May 24th. Absentee ballots must be in the clerk’s office by 5 p.m. on May 25th to be counted.

Applications can be faxed to 495-1173. For more information contact Sherburn at 495-2421 or 495-2806 from 8:30 a.m. until noon and from 1 p.m. until 5 p.m.

Salt City Candles

NOW AVAILABLE FOR SALE AT

BOWEN BUILDING SUPPLY

31 W. IDAHO STREET, HOMEDALE

“Come Smell the Best”

From page 1



Cricket invasion
Mormon crickets converge on sagebrush near the Paul Nettleton ranch outside of Murphy last week. Billions of crickets have hatched and are making their way across the Owyhee Desert. Nettleton has been poisoning the insects on his private land, but said he cannot do anything with the bugs on surrounding public land until July.

✓ Mormon crickets

crickets do not fly so they will almost always hit the barrier of poisoned bait.

Many ranchers and farmers will apply the bait around the perimeter of their fields to reduce the number of crickets invading. Bait is also applied along roadsides to reduce the risk of car accidents from large numbers of crickets crossing highways. It is best to apply the bait when the crickets are still young or in the developing stages.

Last year several counties were declared disaster areas because of the infestation. Experts said then that the outbreak was huge and earlier than normal. This year, they are earlier yet.

“It impacts the farmers and the ranchers,” An Animal and Plant Healthy Inspections Service’s spokesman said. “The crickets do take foliage off the range land so there’s competition with livestock and there’s also competition with the wildlife for the foliage. As far as the crops are concerned, there are very few row crops in this immediate area here, but there are some hay fields and the crickets can do significant damage to hay fields.”

The county commissioners were working on a draft emergency declaration at their meeting Monday. Word of any final action was not available as of press time.

Cooky's

"Famous Potato"

House

Meat & Potatoes Home Style

Breakfast & Lunch Starting At \$3.99
Dinner Starting at \$6.99

FRIDAY & SATURDAY & SUNDAY:

HOME GROWN
CHOICE ANGUS
STEAK DINNER

\$12.99

14949 SUNNY SLOPE ROAD
HIGHWAY 55 IN SUNNY SLOPE

459-8200

BETWEEN MARSING AND CALDWELL

DINE IN

TAKE OUT

CATERING

MONDAY - THURSDAY
7 AM - 8 PM
FRIDAY & SATURDAY
7 AM - 9 PM
NEW SUNDAY HOURS:
9 AM - 5 PM

WE CAN ACCOMMODATE
ALL DIETS
(INCLUDING ATKINS, THE ZONE,
LOW-SALT, LOW-FAT & MORE!)

Extremists file suit on Hardtrigger settlement

The anti-grazing extremists have launched yet another attack on ranchers in Owyhee County. During the past year, a settlement team formed by BLM at the request of the County and various permittees who had filed appeals from BLM decisions, has worked hard to find grazing management systems that would avoid litigation.

One of their successes was the Hardtrigger allotment. Permittees Richard and Connie Brandau and Bill and Donna Waterston and the County filed an appeal from a 1999 decision and won a stay from the Interior Board of Land Appeals. That meant that they were able to show that imminent harm to their livelihood could result from the decision.

In 2001 the permittees negotiated water developments for their allotment and agreed to a partial waiver of the stay so that the developments could be installed. In the spring of 2003, the IBLA set a hearing in the appeal, and the settlement team was formed. Kenneth Sebbly, Solicitor (attorney) for the BLM, the permittees and the County obtained a delay in the hearing to give the settlement team time to work. On the eve of the end of the last delay, just days before the hearing, the permittees signed the agreement to settle with a decision which would not put them out of business. Hal Tolmie, Chairman of the County Commissioners and Fred Kelly Grant as representative of the County signed the agreement which was then signed by Sebbly and Glen Secrist, District Manager of the BLM. The agreement was finalized on July 25, 2003.

On April 5, 2004, Western Watersheds of Jon Marvel and Katie Fite, and the Idaho Bird Hunters (represented on the RAC by Russ Hueghins, member of the Owyhee County Local Sage Grouse Working Group), filed a lawsuit against Secrist and the BLM to set aside the Hardtrigger settlement.

The theory of the lawsuit is that the BLM did not comply with the National Environmental Policy Act prior to the settlement. The theory is that the alternative management plan, which was put in effect through the settlement, was not included in the prior Environmental Assessment, and that no adequate NEPA analysis of the settlement was completed.

The lawsuit threatens not only the Hardtrigger settlement but also other settlements, which had been put in place through the year.

Marsing Hardware is

OPEN WEEKDAYS UNTIL 7:00 PM

Monday-Friday 8:30am-7:00pm • Sat 8:30am-5:30pm

We've got the...

Rug Doctor®

\$19.99 /day

3 Rug Doctor Machines
and full line of chemicals
available!

LOTS OF OTHER SPRING CLEANING
BARGAINS THROUGHOUT THE STORE!

MARSING HARDWARE

True Value

Help is Just Around the Corner

896-4162

Fire destroys pallet company's main building

One of two sheds at the Snake River Pallet Company near Homedale was destroyed by fire Tuesday night, but owners said the blaze would not set them back much as they work this week to rebuild and ship orders.



Business burns
Crews from Homedale Fire Department work to contain a fire at the Snake River Pallet Company near Homedale last Tuesday night. The cause of the fire is still under investigation.

Ben and Lori Badiola own the operation. Lori said Monday that the building that cuts and repairs the pallets was the building that burned down. She said right now construction continues in the remaining building on the property as business continues.

Besides the building, a hys-ter, several nail guns, large saws and a large “bull” saw were lost. Lori said the fire is still under investigation.

Fire crews from Homedale and Wilder worked to extinguish the blaze. Nearly 500 pallets were destroyed.

Lori said the community has been very supportive and the business will be rebuilt. She said right now the company is just trying to get back to normal.

Re-Elect **SHERIFF AMAN**

✓ **ETHICS**

- IDAHO SHERIFF’S ASSOCIATION ETHICS COMMITTEE CHAIRMAN
- IDAHO ASSOCIATION OF COUNTIES ETHICS COMMITTEE
- MODEL ETHICS POLICY FOR SHERIFFS

Vote to Re-Elect

SHERIFF AMAN

May 25, 2005

PAID FOR BY GARY AMAN

TWO FOR ONE LOW PRICE RECLINER SALE!

Lane
HOME FURNISHINGS



COBRA
\$499 Pair

Lane
HOME FURNISHINGS



CHAMP
\$599 Pair

Lane
HOME FURNISHINGS



SIREN
\$599 Pair

Lane
HOME FURNISHINGS



DREAM WEAVER
\$699 Pair

Lane
HOME FURNISHINGS



VIKING
1 ARM STORAGE &
DRINK HOLDER
\$799 Pair

Lane
HOME FURNISHINGS



ARIEL
\$999 Pair



Lane
HOME FURNISHINGS

ROSTOCK FURNITURE

307 S. KIMBALL AVE. • CALDWELL, ID 83605 - PHONE 208-459-0816

Baby discovery slows home expansion plans

A local family will have to put their plans to build a new home on their property on the back burner for a while after discovering a young family in a tree that had to be removed for the project.

Tonya and Charles Garrison had planned to remove and trim several trees on their property on Johnstone Road in Homedale to make way for a new home they couple have planned to build. But the effort is now stalled for at least a month or more after they discovered a nest of six baby owls living in one of the trees scheduled for removal.

As Curly Angell of Wilder was removing branches from the tree so he could cut it down, he discovered the babies who were quietly waiting for their mother to return.

“I pulled on a stump and it just gave way,” Curly said. “That’s when I noticed the babies. They just looked up at me. I think they were wondering where the heck I came from.”

Curly said he came down from the tree and told Tonya they he would not be able to finish the project on the tree because of the birds.

“I like birds,” Curly said. “I like all animals especially baby animals. We will just have to wait on it until they are old enough to fly.”

Tonya said her family has watched the nest since it was discovered and the mother has been returning to her young. She said Curly even replaced the branch stump in hopes of protecting the young family.

“He tied it back up over the nest,” Tonya laughed. “He is so protective over those babies.

Tonya said the family is not concerned that they will have to wait while the babies grow. She said they just wanted to be sure the babies were old enough before they bothered them any further.



Protected babies
Wilder tree cutter Curly Angell replaces a tree limb over the top of a nest with six baby owls in it. Angell discovered the new family as he was topping a tree he planned to remove.

Weather			
	H	L	Prec.
Apr.20	63	43	.04
Apr.21	60	40	.12
Apr.22	53	37	.18
Apr.23	no	read	
Apr.24	no	read	
Apr.25	no	read	
Apr.26	76	32	

Re-Elect **SHERIFF AMAN**

✓ **EXPERIENCE**

- 23 YEARS OF OWYHEE COUNTY LAW ENFORCEMENT
- 7 YEARS AS **YOUR** SHERIFF
- OPERATE AND ADMINISTER ONE OF TOP 17 JAILS IN IDAHO

Vote to Re-Elect

SHERIFF AMAN

May 25, 2005

PAID FOR BY GARY AMAN

The Owyhee Avalanche

P.O. BOX 97 • HOMEDALE, ID 83628

PHONE 208 / 337-4681 • FAX 208 / 337-4867

E-mail owyheeavalanche@cablone.net

U.S.P.S. NO. 416-340
Copyright 2004—ISSN #8750-6823

JOE E. AMAN, *editor-in-chief and publisher*
CHERYL BEESON, *reporter*
JENNIFER STUTHEIT, *office*
ROBERT AMAN, *composition*

Published each week in Homedale, Idaho by Owyhee Avalanche, Inc. Entered as Periodical, paid at the Post Office at Homedale, ID under the Act of March 3, 1879. POSTMASTER: send address changes to THE OWYHEE AVALANCHE, P.O. 97, Homedale, ID 83628.

Annual Subscription Rates:

Owyhee County.....	\$31.80
Canyon, Ada, Malheur counties	37.10
Elsewhere.....	40.00

(Price includes sales tax where applicable)

Deadlines

Classifieds

Monday noon the week of publication

Legal notices

Friday noon the week prior to publication

Letters to the editor

Friday noon the week prior to publication
(Limit 300 words, signed, with day phone number.)

Display advertising

Friday noon the week prior to publication

Inserts

Friday noon the week prior to publication

Your Choice of Carpet Patterns- Berber, Sculptured, Cut Pile, & Plush Carpeting all on sale

FROM \$14.⁹⁵ sq. yard

INSTALLED \$1.66 sq. ft.

PAD INCLUDED

THE PREMIER PERFORMANCE CARPET

CARPET TESTED AND WARRANTED BY DUPONT.

INCLUDES HEAVY PAD & FREE REMOVAL OF EXISTING CARPET

- Financing Available
- Free Estimates
- Idaho/Oregon Public/Licensed Contractors

A Member of \$8 Billion Buying Power

Parma Furniture Co.
“Like Having A Friend At The Factory”
108 3rd St. • Parma, Idaho
722-5158 • toll free: 888-722-0078

Read all about it

in

The Owyhee Avalanche

337-4681

From page 1

✓ Initiative

Legion Hall in Bruneau at 7 p.m.

Grant said the draft proposal submitted by the Owyhee Initiative Work Group is available at owyheeinitiative.org, or a copy can be obtained by e-mail from owyheeinitiative@cableone.net or by calling 250-4166.

A copy, with illustrative maps, is available at The Owyhee Avalanche, and at the office of the county clerk in the Owyhee County Courthouse in Murphy for public review.

Grant said at the public hearings, members of the Owyhee Initiative Work Group would present the components of the draft proposal. The floor will then be open for questions and comments from the public.

Written comments by the public can be submitted in writing, either electronically to owyheeinitiative@cableone.net or by land mail to "Owyhee Initiative" 620 Fletcher, Nampa, Idaho, 83686. Comments will be accepted until May 18, 2004. Comments, in writing or in public statements at the hearings, should be directed to the specific language of the draft proposal, and objections to components of the draft proposal should be accompanied by alternative solutions to land use conflicts.

Grant said witnesses who testify against components of the draft proposal would be asked by the Board of Commissioners for alternatives, which will solve land use conflicts and allow economic stability for livestock grazing and protection of private property rights.

After the public hearings, the commissioners will direct its representative to the work group as to how to vote the county's interest at the next

work group meeting on May 20.

✓ City audit

ley and Company CPAs in Nampa is again performing the audit that Fink said has not been done efficiently in the past. He said Zwygart has done the audit for the city for many years and because of time, a new auditor was not possible.

"I am worried that the audit will never really be complete because so many receipts are missing," Fink said. "Jared is doing the audit this time because his career is on the line. What he did was to trust the former city clerk and he took the paper work produced just like everyone else. He got sucked in just like everybody else. But instead of looking at receipts and making sure he was given a true audit he didn't. He didn't do his job."

Fink said the reason Zwygart is performing the audit this time is because the city did not have time to find a new auditor before the budget hearing. He said that Zwygart should not be excused from responsibility because "he did not do his job."

The audit is costing the city just over \$4,000 and Fink said the details in this audit compared to past audits are being scrutinized much closer. He said Zwygart is also being watched much closer.

"We may never know where a lot of money went," Fink said. "I can say at this time the city is holding its own. We have found many, many mistakes and squandered spending, but we have pulled together as a team and are tightening our belts. Some of the projects we wanted to get done will not get done this year. But we are bringing the city back to where it needs to be."

Zwygart did not respond to a request for comment.

SIDRA to hold charity poker run

Commissioners' request BLM waive fees denied

Bill Walsh from the Southwest Idaho Desert Racing Association said last week that a fundraiser planned for Saturday at Heming Way Butte, could be hindered by the Bureau of Land Management's request for payment from the event. Now county commissioners are requesting the bureau waive insurance demands and participant fees.

Walsh said last week that he has planned a Poker Run off road vehicle race and a chili cook-off for May 2 and he plans to donate all of the proceeds to the Owyhee County Search and Rescue and to the Grand View Ambulance service. But Walsh said the BLM is requiring him to pay an insurance provision as well as \$4 per participant.

Commissioners sent a letter to Owyhee Field Manager Jenna Whitlock last week. The commissioners are requesting BLM to waive the participant fee and insurance provision since they do not feel the event is a competitive activity. Whitlock said Monday that the Bureau could not waive any fees or insurance provisions due to regulation requirements.

"We have new regulations out that require we have a standard permit fee as well as insurance provisions," Whit-

lock said Monday. "If I could waive this thing I would. The sheriff's office has done so much for BLM and we have a real good relationship with the sheriff's office as well as SIDRA. It is one of those things that if I could I would, but we are not going to be able to waive the fees."

"Mr. Walsh indicated that BLM is classifying the event as a competitive activity which requires both an insurance provision as well as a per participant fee to be assessed and paid to BLM," Commissioners said. "Mr. Walsh informs us that the event is not competitive and it is his belief, based on past occurrences of the same or similar type of events, that both the insurance requirement and the participant fee is either not required under the regulations or could be waived by your office."

The commissioners told Whitlock that the county has a constant drain on county resources, including search, rescue, and medical response. They said the drain is tied directly to recreational activity on the federal and state lands in Owyhee County by citizens of other counties.

"As we have previously noted, search and medical response often is costly and that cost is borne by the taxpayers of the county," the commissioners stated. "We are therefore, quite pleased to see a group which makes

recreational use of the lands in the county, offer to perform a fund-raising activity that will help to offset the burden currently carried by the county's taxpayers. We strongly support what Mr. Walsh's group is attempting to do and request that you support it as well with the elimination of the insurance and fee requirements."

The poker run and chili feed will begin at Heming Way Butte at 11 a.m. and is open to anyone who wants to participate. Suggested donations of \$10 are requested Walsh said prizes will be awarded. He said the run has a second purpose to educate riders on land use issues and to introduce riders to the new trail system program in the Owyhee Front. He said the route is beginner level and two or four wheelers should not have a problem with the area.

For more information contact Walsh at 459-6871.

Subscribe today!

Have the Owyhee Avalanche delivered to your home each week!

337-4681

SUGAR SHACK

Pre-Grand Opening Specials

- sno cones • smoothies
- Italian Sodas • Texas Doughnuts

Coupon

Valid on May 1st 2004 12-6pm

BUY 1 GET 1 FREE

med size sno cone

Located near Pruitt Tire in Marsing

Mr. B's Market

111 West Main Street • Marsing, Idaho 83639
(208) 896-4345
OPEN Sun - Thurs 8 am - 9 pm Fri-Sat 8 am - 10 pm
PRICES EFFECTIVE APRIL 1-30, 2004

OVERSTOCK SPECIALS!

	SUN LAUNDRY SOAP 31 to 40 Loads \$1.99		HAMBURGER HELPER 6.2 to 7.5 oz. 99¢
	PROGRESSO SOUP 16 TO 19 OZ. ASST'D. 89¢		B&M BEANS 28 OZ. 89¢
	EAGLE BRAND SWEET CONDENSED MILK 14 OZ. 99¢		GERBER BABY FOOD 4 OZ. 3 \$1 FOR
	BEST FOODS MAYONNAISE 48 OZ. \$3.89		BUDWEISER OR COORS BEER 18 PACK CANS \$12.99
<div><p>MR. B'S COUPON EXPIRES APRIL 30, 2004</p><p>12 TO 20 OZ. ASST'D. KELLOGG'S • POST • GENERAL MILLS</p><h2>CEREALS</h2><p>\$1.89 EACH OR 3 \$5 FOR</p></div>		<p>L'oreal, Clairol, Pantene Shampoo, Conditioner & Mousse ASSORTED \$1.89</p>	

Obituaries

Valerie Jasmer

Valerie Jasmer, age 40 of Linwood died Saturday, April 17, 2004 while traveling in Central America. Valerie was born February 13, 1964 in Nampa, Idaho, the daughter of Leonard “Pete” and Margaret George. She grew up on the family dairy farm, graduated from Homedale High School, and received a Bachelor’s Degree from Idaho State University.

Valerie was united in marriage to Rod Jasmer on October 24, 1987. They made their home in Australia for two years before traveling throughout Southeast Asia. They returned to Minnesota to start their family.

Valerie worked as a dental hygienist for Dr. Dan Shannon in Maplewood, Minnesota. She was an active member of St. Paul Lutheran Church and the American Dental Hygienist Association. She had strong community involvement and was active with her children’s schools, scouts and sports activities. Most importantly, she enjoyed time spent with her husband and their children. Valerie had a passion for life and could light up a room with her smile. Her memories were captured in the thousands of photographs she took throughout her life.

The impact she made on everyone she met will never be forgotten. She was a stranger to none and a friend to all. She is preceded in death by her father; Pete George. She is survived by her loving husband; Rod, children; Alisha, Erica and Peter, mother; Margaret, siblings; Kathy Barton, Diana (Gerald) Webster, Phil (Trish) George, Eileen (Steve) Dalebroux, Judy (Roy) Bowery, Marianne (Robin) Freelong, father and mother in law; Mel and Ruby Jasmer. Visitation was 3:00-7:00 P.M., Sunday, April 25, 2004 at Mattson Funeral Home-343 North Shore Drive-Forest Lake, continuing one hour prior to the service at the church on Monday.

Funeral Services were held at 11:00 A.M., Monday at St. Paul Lutheran Church-5879 Wyoming Trail-Wyoming. Rod’s employer, Delta Environmental Consultants has generously offered to match all contributions to the Jasmer Children Education Fund, C/O-Western Bank-1740 Rice Street, St. Paul, MN 55113, Attn: Karen Henslin

Grace Martin

Grace Martin 84, of Homedale, passed away from natural causes Friday, April 16, 2004. Graveside services were held at 10:30 a.m. Wednesday, April 21, at Marsing-Homedale Cemetery with Pastor David Jacobsen officiating. Services were under the direction of Dakan Funeral Chapel, Caldwell.

Grace was born in Wheatland, Wyo., on Sept. 24, 1919, to Bert and Amy Winchell Adams. She graduated from Torrington High School and attended Laramie University prior to moving to Homedale where her parents homesteaded.

Grace met and married Don Martin in 1940 and to this union were born two children, Donnie in 1942 and Donna in 1945. Donnie passed away in 1960 at the age of 17.

In 1968, Grace and Don moved to La Grande, Ore., where he worked for the city. After 30 years, they returned to Homedale to be closer to their family.

Grace is survived by her husband, Don; daughter and husband, Donna and Harry Tallay; her brother-in-law and his wife, Henry and Ann Martin; and several very special nieces

and nephews.

She was preceded in death by her parents, Bert and Amy Adams, her 17 year old son, Donnie; her 17 year old grandson, Adam Rose; her sister and husband, Betty and Keith Orris; and three nephews, Rick Orris, Roy Arnold and George Martin.

Fay Metzger

Fay Metzger 83, of Vantage died April 9, 2004, in his son’s Ellensburg home.

He was born June 2, 1920, in Paoli, Colo., the son of Adolph and Lena (Schultz) Metzger.

Fay served in the Army during World War II. He was self-employed as an excavator and owned a gas station in Vantage. Fay was a member of the American Legion. He enjoyed hunting, fishing, playing slot machines, pinochle and loved to go to rodeos.

He was preceded in death by his wife Betty Jo Metzger on April 25, 2000; brothers, Eldon, Denzil, Ardell, Dale and Melvin.

He is survived by his children, Ernie (Linda) Metzger of Ellensburg and Annie (Dan) Purinton of Desert Aire; sister, Jean Criffield of Homedale; five grandchildren and two great-grandchildren.

Visitation was April 13 from 10am-7pm with a funeral service taking place April 14 at 11am in the Columbia Room at Steward & Williams Tribute Center. Entombment followed at IOOF Cemetery.

In lieu of flowers memorials may be made to Hospice Friends, 302 E. Second Ave., Ellensburg.

Steward & Williams Tribute Center was in charge of arrangements.

Joan Fay Mewhinney

Joan Fay Mewhinney, age 60, of Seaside, Oregon, died Monday, April 19, 2004, from complications of cancer, in an Oregon City Hospital. A memorial service was held at the United Methodist Church in Seaside, Oregon on April 23, 2004. A graveside service will be held at the Marsing-Homedale Cemetery in May.

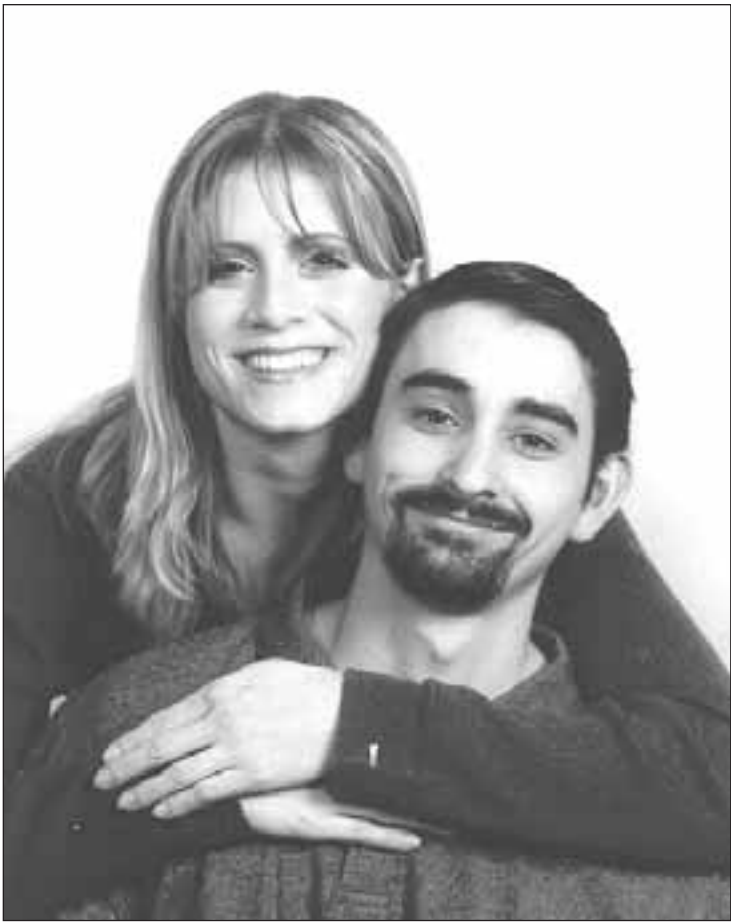
John Marcus Shenk

John Marcus Shenk, 75, passed away from a heart attack Tuesday, March 23, 2004 in Burns, Oregon. A memorial service will be held May 6 at Mt. View Church of the Nazarene on Ustick and Batt Corner Rd. at 11am. There will be a potluck following the memorial for friends and family. We hope you’ll come and share your memories.

John was born October 20, 1929 in Nampa, Idaho. He moved to Burns, Oregon and has resided there approximately 35 years. His occupation carried a title of “Old Time Cow Boss.” He was married to Joella Shenk for 40 years. They had five children together. Later in life he married Rosetta Shenk.

John is survived by his children; Naida Haumann of San Bernardino, CA, Charles Shenk of Bend, OR, Ivy Nelson, Baker City, OR, Johnella Yuste of Klamath Falls, OR and Mark Shenk of Baker City, OR; brothers, Art, Bill, Dennis all of Adrian, OR and Dick Shenk of Homedale; his sisters, Adean MacKenzie of Rockville, OR, Cindy Mavey of Homedale, Christy Smith of Nampa; lots of nieces and nephews and several grandchildren.

John was preceded in death by his parents and two wives.



Lisa Cuddeback to wed Mike Basterrechea

Russ and Joyce Cuddeback of Homedale announced the engagement of their daughter Lisa to Mike Basterrechea also of Homedale.

Lisa graduated from Homedale High School in 1996 and is employed at Qualitree Inc. of Nampa.

Mike is the son of Maria and of the late Julian Basterrechea also of Homedale and graduated from Homedale High School in 1995. He is employed by SSI Food Service in Wilder. The couple plans to wed on July 5 with a reception at the Albertson College of Idaho in Caldwell.

OLD WEST DOLLAR
STORE AND MORE STORE

"MORE THAN JUST A DOLLAR STORE"



COME SEE US
FOR ALL YOUR
MOTHER'S DAY
NEEDS!

CARDS • PLUSH BEARS
LONG STEMMED SILK ROSES
BALLOON BOUQUETS
WE SPECIALIZE IN
CUSTOM MADE
GIFT BASKETS...

Treat Mom to one for Mother's Day!

MARSING
6 Main Street

PAYETTE
1244 Hwy. 95

HOMEDALE
337 E. Idaho Ave.

Please enter my subscription to the Owyhee Avalanche now! Enclosed is \$

NAME

ADDRESS

CITY

STATE ZIP

SUBSCRIPTION RATES:

Owyhee County.....\$31.80
Canyon, Ada and Malheur Counties.....\$37.10
Elsewhere\$42.00
Idaho Sales Tax included

The Owyhee Avalanche
P.O. BOX 97 • HOMEDALE , ID 83628



New ownership

Former Valley Machine Shop owner Paul Fink stands under the business's sign with new shop owner Greg Lyon. Lyon took over the business on April 1 and said things will basically remain the same.

Valley Machine has new owner after 27 years

After 27 years Valley Machine Shop has been turned over to a new owner and the previous owner will retire.

Paul Fink, Homedale's mayor, said last week that he has sold the shop to Greg Lyon who said the business will remain the same as it has in the past. Lyon took over the shop on April 1.

"I started this shop in 1976," Fink said. "I was a supervisor at Simplots in the 60s and worked for Greg's grandfather. I went to California and his grandfather would come to California and tell me I needed to come back to Idaho and start a shop. I came back and bought the property in 1976."

Greg is a native Idahoan and Fink said he would not have sold to business to anyone who would not continue his tradition.

Fink expanded the business with a 60 by 80 foot shop. Greg said he has stick, wire feed, mig and tig welding experience. He said one of his machinists has been working for Fink for 17 years and will continue to work for the shop. Fink said he will still be a familiar face in the shop whenever Greg needs his help.

Lyon comes from a long line of machinists including his grandfather who taught him the trade. Lyon said he will continue to specialize is farm machinery and manufacture specialty items.

The business open from 8-5 Monday through Friday and 8-12 on Saturday but he also will be able to respond to emergency calls.

WE CAN HANDLE ALL YOUR HEATING & COOLING NEEDS!

RESIDENTIAL OR COMMERCIAL

ALL TYPES OF FURNACES:

OIL - GAS - ELECTRIC - HI TECH

Heat Pumps • Air Conditioners • Boilers • Humidifiers
Water Heaters • Fireplaces (Wood or Gas)
Air Cleaners • Central Vacuum • Sheetmetal

SPECIALIZING IN OIL FURNACES



24 HOUR
Emergency Service

Residential Commercial

Greg Kelly
Homedale • 337-5812
573-1788 • 337-3674



Heating & Cooling Systems
Since 1914

Ben & Lori Badiola / Owners

American Ecology earns \$2.4 million

American Ecology Corp., the Boise-based company that specializes in disposal of hazardous waste, reported net earnings Tuesday of \$2.4 million, or 14 cents a share, compared to a loss of \$17.2 million, or \$1.11 a share, in the first quarter of 2003.

Increased waste volumes at its disposal sites, including its Grand View site, brought in \$13.9 million in revenue for the quarter, a 29 percent increase from last year.

Over the past year, the company's improved performance has translated to an increase in stock price. The stock's 52-week low was \$2.53 a share. On Tuesday, it closed at \$10.77 a share, down 58 cents.

Company President and Chief Executive Officer Stephen Romano said the company now expects a greater than 15 percent growth in income during 2004.

Operating income, a key measure of financial performance, increased from \$290,000 for the first quarter last year to \$3.4 million for the first quarter of 2004. The results marked the ninth consecutive quarter of positive operating income. For the second consecutive quarter, each of the Company's four disposal facilities posted

positive operating income and showed improved operating income over the same quarter last year.

First quarter 2004 revenue reached \$13.9 million or 29% higher than the \$10.8 million in revenue for the first quar-

Master gardener plans plant exchange

After completing the University of Idaho's Master Gardener program, Jan Aman of Homedale is going to give some of her time back to her community.

Jan will host a plant exchange for the Marsing/Homedale area at the Owyhee County Fair Grounds office next to the Armory on Saturday, May 8 from 9 a.m. until noon.

Jan said she hopes to make the gathering an annual event where gardeners young and old can exchange tips, helpful hints and experiences with neighboring gardeners as well as plants, vegetable or flowering.

Those attending are asked to bring bulbs, flowers, vegetable plants or seed and enjoy a day of gardening tips.

ter of 2003. A combination of higher waste volumes and higher average selling prices yielded the increase in quarterly revenue.

At the Company's Idaho site, a slightly lower average selling price was more than offset by higher volume, allowing the site to increase revenue by almost 30%. At the Company's Nevada and Texas facilities, average selling prices increased due to a more favorable mix of higher-priced niche services generating increased revenue from the first quarter of last year at both sites. The Company's rate-regulated Washington facility also posted another strong quarter.

Have a news tip?

Call us!

337 4681

Marsing Gun Club

TRAP SHOOT

Benefit for
Marsing Class of 2004
Drug-Free Graduation Party

Saturday, May 1
Starts at 10 am 'til ?
\$10/person - all day shooting
Food, Drinks, Shells -
Available for purchase
Everyone Invited!

Spring Rites – The Sage Grouse

By Charlie Justus, District
Conservation Officer Idaho
Fish and Game – Southwest
Region

Spring has sprung, the weather is nice, the roads are dry and people are on the move. I've read in the Idaho Press Tribune fishing reports that the fishing is getting good on the Duck Valley Indian Reservation. The rafters are starting to strategize on when the flows will be just right for that awesome float on the upper Owyhee River in Idaho, and I read this last Sunday about four-wheeling in the Owyhee Mountains.

What ever reason you pick as an excuse to be outside in this grand place we call home, there is a wildlife species that you may encounter that deserves our appreciation from a distance. I'm referring to the Sage Grouse, the majestic native upland bird of the high sagebrush desert. Unlike the Ring-necked Pheasant, Chukar Partridge and California Quail that were introduced, the Sage Grouse or "Sagehen" is native to Idaho. Sage Grouse distribution is restricted to extensive stands of sagebrush. Sage Grouse use sage for nesting, loafing, escape cover and even eat the leaves in winter. Spring and Summer foods are more varied but include leaves and seeds of sagebrush associated forbs and grasses.

Spring is breeding time for upland birds. Sage Grouse breeding is quite different

than most other birds. Sage Grouse males congregate on historic strutting grounds called leks. These leks may have been in existence for hundreds of years. The males compete with each other by strutting and displaying to the females. The females walk through the lek checking out the males, they choose the male they think has the best chance of continuing on the gene pool. When it comes to Sage Grouse the handsomest and most pumped guys get the girls.

If you venture out into the wilds of Southern Idaho take care to give Sage Grouse plenty of room at the lek sites. Most leks are off the beaten path and difficult to find. They don't tolerate disturbance well when they are trying to get a date. They can be enjoyed from a distance with binoculars or spotting scope. If you drive right up on the lek the birds will disperse into the sagebrush and won't display for you, which is probably why you wanted to see the grouse in the first place.

Please keep motorized vehicles on roads and trails and don't travel off road to get to the leks. Off road travel can destroy Sage Grouse and other wildlife habitat. During the summer months it is very important to not travel off road because those spring grasses have dried and could catch fire. Wildfire is a major contributor to sagebrush habitat destruction.

This last year, Fish and Game's South West Region Enforcement Officers developed and implemented a Sage Grouse enforcement plan in response to some people thinking that poaching may contribute to a lower population level of Sage Grouse. I am happy to report that it does not appear that Sage Grouse poachers are a major detractor to the population. This last season (2003) 1205 Sage Grouse hunters legally harvested 1835 Sage Grouse in South West Idaho. The enforcement officer worked approximately 1100 hours in Sage Grouse population areas. During those 1100 hours only eleven (11) Sage Grouse violations were detected, resulting 9 illegal Sage Grouse being seized. I feel confident that illegal harvest is not affecting the population.

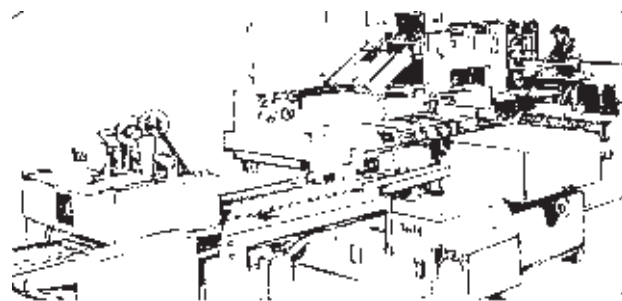
The SW enforcement officers will continue to protect Sage grouse all year long, because it is our job, the sporting public expect us to do it, and the general public expect to always have an Idaho Icon in the Sagebrush high desert of Owyhee County. Sage Grouse are **OUR** birds, they have significance to our wild heritage. Help me and the other 18 enforcement officer in the SW Region protect our wildlife by reporting wildlife crimes to SW Region Office: 465-8465, Citizens Against Poaching (CAP): 1(800) 632-5999, or Idaho State Police: 846-7500.



4-H club donates

Bryce Kershner of the South Mountain 4-H Club works with club members and volunteers to plant a seven-foot evergreen tree at the Pleasant Valley School. Kershner and the group planted the trees as part of a community service project. He will be showing both a steer and a horse project during this year's county fair and rodeo.

**WE MAKE A
GREAT IMPRESSION**



**You'll be impressed by
the quality of our work
and our personalized service**

We're a multi-faceted print shop providing complete services from graphic design and typesetting through printing and binding, so no part of your job ever leaves our hands.

We offer consistent results at competitive prices.

337-4866

All types of web and commercial printing

Owyhee Publishing

P.O. BOX 217 HOMEDALE, ID 83628

Take charge of your health care premiums...become informed!

Go to: www.medicare.gov/MPPF

Medicare's Personal Plan Finder helps you choose the Medicare plan that's best for you. This tool will ask you a few questions and then give you a personalized report of the health plans available in your area.

**BlueCross®
of Idaho**

An Independent Licensee of the Blue Cross and Blue Shield Association

TrueBlue. a Medicare + Choice Plan

395-8200 or 1-888-494-2583

**TDD/TTY for the hearing impaired:
1-800-377-1363**

Now Serving: Southwest Idaho

Don't have access to the internet? Call and we can help you complete the process over the phone. We are confident Blue Cross of Idaho has the right choice to fit your health care needs with one of our Medicare products:

- Classic Blue, Medicare supplement
- True Blue, Medicare + Choice plan

Call to reserve your seat for a **FREE** meal at one of these

True Blue meetings:

05/04/04 Golden Corral, Boise at 6 p.m.
05/06/04 Elmer's on Fairview, Boise at 11 a.m.
05/11/04 Golden Dragon, Caldwell at 11:30 a.m.
05/15/04 Golden Corral, Boise at 9:30 a.m.
05/18/04 Elmer's on Fairview, Boise at 11 a.m.

Seating is limited - RSVP today!

True Blue is an M+C organization with a Medicare contract. A sales representative will be present with information and applications. For accommodations of persons with special needs at sales meetings call 395-8200.

MK0433 03/04



Young musicians fiddle for fun and competition

Several young musicians in Homedale are fiddling their way through life and some are even taking their musical gift to this year's Oldtime Fiddlers contest in Weiser next month.

The musicians range from seven to eleven years old and some have been playing their violins before they were able to say their ABC's.

Carlie Purdom 7, Justine, 10 and McKenna Calzacorta, 7, Whitney Uria, 9, Kyle Purdom, 10 and Kiley Potter 11 have been practicing their musical gifts at the Junior Jammers in Nampa. Some of the kids do not play for competition, but several of the others do and will compete in Weiser next month.

Justine, the daughter of Cheryl and Lavon Calzacorta, has been playing the fiddle since she was six years old and won second place at the Idaho Open last week. She will be among the several

hundred fiddlers competing in Weiser. Her sister, McKenna has only been playing for one year and has not decided if she is going to Weiser or not.

Carlie, the daughter of Steve and Tina Purdom, is in the first grade and has been playing since she was four years old. She and her brother Kyle have a history of musicians in their family including their grandfather Woody Purdom. Carlie is also a singer and both kids played for their grandfather's 80 birthday last month.

Whitney, the daughter of Dennis and Teri Uria has been playing for one year and said she does not play to compete. She said she began playing the fiddle just because it looked like fun.

Kiley is the daughter of Randy and Kathy Potter and has been playing for one year as well. She did compete in the Idaho Open last week and said she began playing

because her friend plays. But she said after playing for a while, she loves the music.

Cheryl said the group plays

for the Junior Jammers under the direction of Roberta Pierce.

In Weiser, the young fid-

dlers will compete among 350 top fiddlers vying for national fiddle titles in many different age groups.



Junior Jammers

Homedale Junior Jammers fiddle players include McKenna Calzacorta, Kyle Purdom, Whitney Uria, Justine Calzacorta and Kiley Potter.



Close call

A vehicle driven by Mario Quezadz, 19 of Homedale, lies on its side after Quezadz lost control of the vehicle due to excessive speed. The accident happened Friday afternoon west of the intersection of Johnstone and Graveyard Point Road next to the Roland home. Two passengers were in the vehicle, but no one was injured. Reports show that Quezada admitted to driving over 80 miles per hour in the 50 mph zone. He was cited for misdemeanor reckless driving.

Re-Elect **SHERIFF AMAN**

✓ TRAINING

- BASIC, INTERMEDIATE AND ADVANCED LAW ENFORCEMENT CERTIFICATION
- EXECUTIVE CERTIFICATE
- TOP 13 SHERIFFS IN IDAHO
- FBI NATIONAL ACADEMY GRADUATE
- 2000+ HOURS OF SPECIALIZED LAW ENFORCEMENT TRAINING

Vote to Re-Elect

SHERIFF AMAN

May 25, 2005

PAID FOR BY GARY AMAN

Se Habla Espanol

TERRY REILLY

HEALTH SERVICES

IS PROUD TO ANNOUNCE EXPANDED HOURS AND SERVICES AT THE MARSING AND HOMEDALE CLINICS

Homedale And Marsing Clinics Provide Complete Family Care.

Prenatal Care & Deliveries – Minor Emergencies – Laboratory Services
Immunizations–School Physicals–Diabetes & Hypertension Management–
DOT Physicals

Walk-Ins And Appointments Welcome.
We Accept Medicare, Medicaid, Private Insurance, And Uninsured.
Discounted Fees Available Based On Family Size And Income.

MARSING CLINIC

201 Main Street
Marsing, ID 83639
Phone: 896-4159

HOURS

Mon, Tues, Wed, Fri.
8:00 AM-Noon / 1:00-5:00 PM
Thur. 8:00 AM-Noon/1:00-8:00 PM

Chip Roser, M.D.
Faith Peterson, MS, FNP
Janine Franco PA

HOMEDALE CLINIC

108 E. Idaho
Homedale, ID 83628
Phone: 337-3189

HOURS

Mon, Wed, Thur, Fri.
8:30 AM-5:00 PM
Tue. 8:30 AM-9:00 PM

Chip Roser, M.D.
Dick Ernest, FNP
Janine Franco, PA

Sheriff warns of con artists

Owyhee County Sheriff Gary Aman is sending a warning to consumers this week that several cases have been reported of not-so legitimate promoters in the area. Aman said consumers need to check credentials before allowing a person to do substantial work for them.

Last week, Julie Woods from Homedale, reported to officers that she had seen an ad in a local paper for a company who would do landscaping work. Julie said she was taking bids on a project at her newly remodeled home and called the advertised number to see if they wanted the job.

"He was a go getter," Woods said from her front yard last week. "He was here every day. He seemed young, but he seemed like he really wanted the work."

That's when the trouble began for the Woods. Now the couple is out \$2,000 and they have empty trenches dug in their yard.

James Worthen, of J and M Labor and Landscaping was hired by the Woods and a contract was signed. Julie said James was contracted to install a sprinkler system in the yard, plant shrubs, trees, lay grass seed and gravel by the driveway. The contract states that the sprinkler system would be under warranty for five years including the timer for the system.

"He said he could do the job for \$4,500," Julie said. "We told him we had a bid for just over \$4,000 and asked him what he would do if my husband dug the trenches. He told us that he could do the rest of the job for \$3,000."

In Worthen's contract it states that the Woods would need to pay at least half of the cost before the job was begun. Julie gave him a check for \$2,000.

"We gave him the check and he was supposed to be back on Saturday to start," Julie recalled. "We have not seen him since. We have called all of the phone numbers he left us with and will not return the calls. We even were able to find his father outside of Marsing, but his dad said he has not seen him for about a week."

"It makes me sick to think that a person would be so untrustworthy. He brought diagrams of what he would do. He had a contract and phone numbers to reach him at. We could reach him anytime we wanted before we let him have the money. Now we

have nothing except trenches in our yard and no landscaping."

Woods said she also learned that Worthen is only 17 years old. She said when he bid the job she was concerned about his "youthful" look, but was assured by Worthen that he had the experience.

"His dad told me he was only 17," Woods said. "He apparently is an emancipated adult because he is married, but I never dreamed he was only 17. I looked him in the face and told him he looked young to me but I am going to give you a shot. He shook my hand and looked my right in the eyes. I trusted him and he took me."

Worthen's father, James

Worthen Sr. said he would do anything he could to help Woods because he has had trouble with his son in the past. He said he has not been in contact with his son since taking the Woods' money. Woods has filed a civil suit

to page 11

Unfinished business

Empty trenches is what remains on the property of Julie Woods near Homedale after she contracted J&M Labor and Landscaping to landscape her property and the owner of the business skipped town, with Julie's \$2,000. Now Woods has filed a civil claim against the business and is also asking for criminal action.



22nd Annual Lion's 4th of July



Over
500 Cars
Totally
Destroyed!

Demolition Derby July 4th 2004

OWYHEE COUNTY FAIRGROUNDS • HOMEDALE, IDAHO • TICKET SALES AT SELECT-A-SEAT
RULES AND REGULATIONS

1. Drivers must be 18 years of age or over.
2. Any passenger car eligible, (including station wagons). NO pickups, SUV's, 4 wheel drives, convertibles, or compacts allowed.
3. Cars to remain stock with full bodies, with these options:
 - A. Battery relocation - must be strapped down and covered to retain acid. Batteries like to tear loose on impact.
 - B. 24 volt starting may be used.
 - C. Gas tank relocation. The stock tank must be removed. Tank must be placed in back seat area (smaller tank preferred). Five gallons of gas maximum in tank. No plastic 5 gallon pails. Fuel system must be "sanitary". Metal tanks preferred. Can be anchored down with straps and or redi bolt. Fuel tanks also like to rip loose on impact.
 - D. Radiator Relocation - Must not be in driver's compartment (this includes back seat area) or of any danger to driver. (Roof mount preferred). Radiator pipes should be wrapped to prevent hot water from spraying. Exhaust tubing works well here with short pieces of hose.
 - E. Wheel wells may be trimmed a maximum of 6 inch radius above tires. No welding here.
 - F. A 12" x 12" hole must be cut over carburetor in hood for fire protection. No covering of any kind over said opening.
 - G. Weld or bolt in 2 vertical bars or the equivalent to keep hood out of drivers compartment unless hood is welded shut.
 - H. No welding on or to bumpers or frames, only sheet metal to sheet metal. Door, trunk, and body seams only. No fender well welding, bolting, riveting, gluing or taping.
 - I. Engine swaps will be allowed but no set backs. The spark plug closest to the front of the engine must not be further back than the center of the upper ball joint
4. Suspension must remain stock. No welding. No full floating axle or 8 hole wheel rear ends.
5. All glass, mirrors, antennas, chrome trim, back seat, trailer hitches and reinforced bumpers will be removed.



6. Full face crash helmet and long sleeve coveralls must be worn. A working seat belt is required and must be worn while in the arena.
7. Car must have working brakes.
8. Trunk, hood and all doors must be secured. Welding is required on doors and optional on trunk.
9. Driver's door must be reinforced with two steel bars placed horizontally on outside surface; one near the top of the door, the other near the bottom. A piece of foam rubber or pillow placed on the inside of the door next to the driver is suggested.
10. No mud or snow tires will be permitted. Maximum tire height shall be no more than 30 inches. Maximum tread width shall be no more than 8 inches.
11. No playing possum - YOU MUST KEEP MOVING AND HITTING. The judges' decision shall be final!
12. No flagrant hitting on driver's door. The judges' decision shall be final!
13. All cars must be at the fairgrounds before 12 noon on the 4th. Gate opens at 9am this year. Cars will be inspected by judges without drivers present. You will be allowed to fix or repair anything the judges find wrong with your car. However, you will not be allowed to take the car off the fairgrounds. Any car leaving the fairgrounds after inspection is disqualified.
14. A number must be printed on each door and on top of each car. Contact Rob or Jeremy Townsend for registration numbers. All registrations must be entered by June 23, 2004. If you want a specific number-call early.
15. A release form must be signed by all drivers and pit crew.
16. Drunk drivers will not be allowed to participate.
17. Only one pit man and driver per car this year due to liability restrictions.
18. No Sniveling!!!

Mandatory Driver's Meeting
Wed., June 23 @ 7:30pm - Owyhee Lanes, Homedale

For more information contact ROB or JEREMY TOWNSEND 896-5099 Marsing or 337-4480 Homedale, evenings

United Way gives resource center \$2,500 grant

The United Way of Treasure Valley awarded the Marsing Resource Center a community safety net grant in the amount of \$2,500. The center is receiving \$208.33 per month for a year beginning on April 15.

In addition, individual United Way donors have designated \$2,490.20 in support of the center. The

names of the donors were not available at press time.

Donations and contributions for a fundraising event are being accepted in conjunction with the chamber of commerce's spring fling that will be held on June 12.

Volunteers are still needed.

MRC is open from 1-6:30 p.m. Monday through Friday and remains open through grants and donations. For more information or to volunteer, call Darlyne Aleksich at 896-5185.

From page 10

√ Con artists

against Worthen.

Laura Anderson from Homedale said she hired a company from an ad in the paper recently to remodel her home and paid the company \$28,000 of a \$30,000 job. She said now the work is not finished and she can no longer contact the contractor. The name of the company is not being released pending Anderson filing a claim or a complaint against the company.

"He even went so far as to use some of my used wood for a step on my redwood deck," Anderson said Friday. "Now the project is not even close to being completed and we can not find him. I have called the Better Business Bureau and they are trying to track down his address. But right now we just wait."

Aman said the only recourse people have is to contact their local law enforcement agency or to file a civil action against the person. He said if the department can prove that the person had the intention to defraud, legal action could be taken against them.

"It doesn't matter if people have a contract or not, if we can show intent to defraud, we can investigate it," Aman said. "Julie's case will be taken under advisement. But what people need to know is just because it is advertised somewhere does not make them legit. People need to check references. Check with the Better Business Bureau to see if a complaint has been filed against them or if they are a legitimate company. Some of these places are just people making some money on the side.

"The state tried to pass some laws to keep some of this from happening, but it got thrown out. People would have had to be bonded and certified to be able to do some of this work."



Spring for a bigger house.

Spring Loan Sale

Home Equity Loan*	Home Equity Credit Line†	Home Refinance Loan*
0% <small>Intro Rate</small> 4.41% <small>APR</small>	0% <small>Intro Rate</small> 4% <small>APR</small>	0% <small>Intro Rate</small> 4.68% <small>APR</small>
	<small>For three months</small>	<small>Prime for the life of the loan</small>

Make your kitchen grow, add a backyard gazebo, or put a boat in your driveway with our incredible Spring Loan Sale. For a limited time (spring, to be exact), three of our most popular loans come with a low introductory rate of just 0%. You can get a Home Equity Loan, Home Equity Credit Line, or a Home Refinance Loan that'll give you some serious summer fun money. You simply can't find a rate lower than 0%, so call 1-800-789-5626 today or visit www.zionsbank.com®.

Visit us at:
315 A Avenue • 482-6218
Or one of our other 21 locations throughout Idaho.

**ZIONS BANK**

We Do Windows!

(Window Envelopes, that is.)

And we also do letterheads, business cards, multiple part forms, newsletters, booklets, tickets, flyers, certificates, pads, and regular envelopes, too!

Owyhee Publishing Co., Inc.

P.O. Box 217 • Homedale, ID • 83625

*APR is based on 0% interest for 3 months and rates as low as 4.99% thereafter. Interest rate is based on loan term, other rates are available. Monthly payments required during the 0% introductory rate period. Credit approval and auto payment from a Zions Bank Account required. Other restrictions apply. Rates subject to change. See a Zions Bank representative for details. †Monthly payments required during the 0% introductory rate period. APR is variable and is accurate as of 3/24/04. Maximum APR is 21%. Property insurance required. There is a \$15 fee for checks under \$500. Credit approval and auto payment from a Zions Bank Account required. Other restrictions apply. Rates subject to change. See a Zions Bank representative for details.

Lions to host football and cheerleading programs

The Marsing Lions will host an optimist youth football and cheerleading program this summer with sign-ups beginning on May 7.

Flag football for seven to eight year olds, tackle football for nine to 12 year olds and cheerleading for five through 12 year olds will be offered. Signups will take place on four different dates through May and June and will be held at the Marsing Elementary School.

May 7, athletes can sign up from 5-8 p.m. May 18 from 5-8 p.m. and June 10 from 5-8 p.m. On Saturday June 12, sign-ups will be held from 11 a.m. until 1 p.m.

Players must be present with a birth certificate in order to register. A first child in the program will cost \$30, but if a family registers any additional children, the cost will be \$20 for each additional.

For more information call 880-1099.



Safe

Jolene Maxwell goes for an out against a Marsing Husky during a 2A WIC softball game Thursday afternoon. Though the runner was safe, Homedale beat the Huskies 12-2 in six innings.

Trojans beat Huskies in six

Homedale had 12 runs on eight hits as they blew past the Marsing Huskies 12-2 Thursday night in a 2A Western Idaho Conference softball game. But New Plymouth Arbor Frost got the win in the circle, striking out two in a complete game effort. On the

offensive side, Frost had two hits and Karianne Vanderhoff and Jessica Hansen each had two hits for the Trojans.

Angela Martinez had a double and an RBI for Marsing and Husky Tamara Kenyon went two for two at the plate.

Rimrock’s softball and baseball teams slam Wildcats

Rimrock’s softball and baseball teams outscored the Wilder Wildcats in 1A WIC games Thursday night. The Lady Raiders stopped the Wildcats 12-2 in five innings and the gentlemen stopped the conference team 13-7 in seven innings.

Rimrock kept its mistakes to a minimum to keep the Wildcats at bay in softball action in Bruneau Thursday. Annalise Field went two for three with an RBI while Trudy Dick hit an RBI triple to lead the Raiders.

Adrea Thomas led the effort from the circle, walking just one batter over the five innings and scattering five hits.

Anthony Hofer got the win for the Raiders and helped out his own cause with a two for two performance at the plate. Ben Field was also two for two and Eddie Welsh added two hits and two RBI.

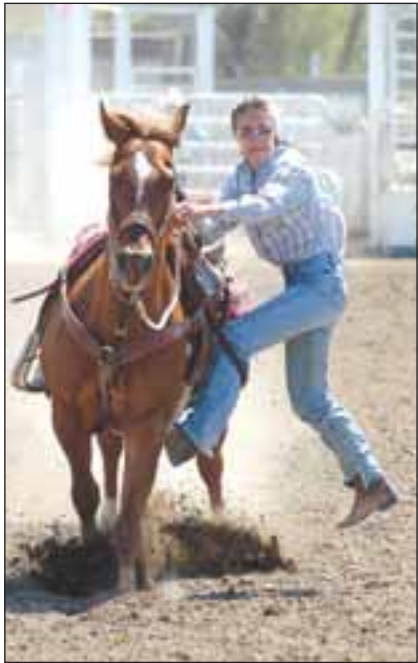
Cody Clagg, who was two for four with three RBI, led Wilder.

Trojans sweep Pirates on the courts

Homedale swept the singles, boys, doubles and mixed doubles and defeated the Payette Pirates 9-3 in tennis on Thursday.

No. 1’s Brett Hopkins and Caity Jones, who toppled their opponents in singles matches, led Homedale.

Anthony Haskett and Laci Vander Boegh pulled out a close win for the Trojans in No. 1 mixed doubles, beating Payette’s Drew Hershey and Kristyn King 5-7, 6-1, 7-5.



Dismount

Hailee Garrett makes a quick dismount off of her horse in the goat tying event at the High School Rodeo held over the weekend in Homedale. Photo by Gregg Garrett.

Teen council to give goat as gift for funds

The Owyhee County 4-H Teen Council will hold the third annual “Get your Goat” fundraiser in the Marsing and Homedale areas on Friday, May 7.

The fundraiser is held by the council so teens can attend the Idaho 4-H Teen Conference later this year. Members of the council will be taking a goat to different businesses and individuals in the Homedale/Marsing area and business owners will only be able to get the goat out the door with a \$10 donation. The donation will send the goat to another location with the chance that the goat could return. A \$50 donation will prevent the goat from returning.

The Owyhee County 4-H Teen Council raised nearly \$1,000 in the one-day fundraiser frenzy last year which involved delivering the goat to over 40 local businesses. Fundraiser coordinators said the event was a success but in the past not all the business were happy to have received the nanny so this year, businesses may contact the Owyhee County Extension Office to decline receiving the beast.

Owyhee County Extension 4-H Educator Tara Rowland said the funds from the event will be used for Idaho 4-H Teen Conference, State 4-H Ambassador training, Know Your Government Conference, 4-H Camp and many other items like leadership activities, community service learning projects and 4-H recruiting activities.

The teen council is a group of 13-19 year olds who coordinate activities geared for older youth. The goals of the group are varied but include developing leadership skills, developing life skills, performing community service learning activities, leading teen leadership projects to assist younger members, learning teamwork and parliamentary procedures, meeting new people and making new friends and planning and implementing promotional activities at the fair and various places throughout the year.



Fly ball

Marsing Husky Brooke Millet catches a fly ball during a 2A WIC softball game with the Homedale Trojans Thursday afternoon.

Rubber Stamps

Made to order

The Owyhee Avalanche

337-4861



Tagged
Homedale's Mark Mashburn chases a Marsing Husky down the second base line to tag him out.

Trojans stop Huskies in eighth inning thriller

The score bounced back and forth, but Mark Mashburn stopped the clock in the eight inning giving Homedale a 7-6 advantage in eight innings over the Marsing Huskies Thursday night in 2A WIC baseball. Homedale made a winning week with a 6-1 victory over New Plymouth and a 9-2 win over McCall.

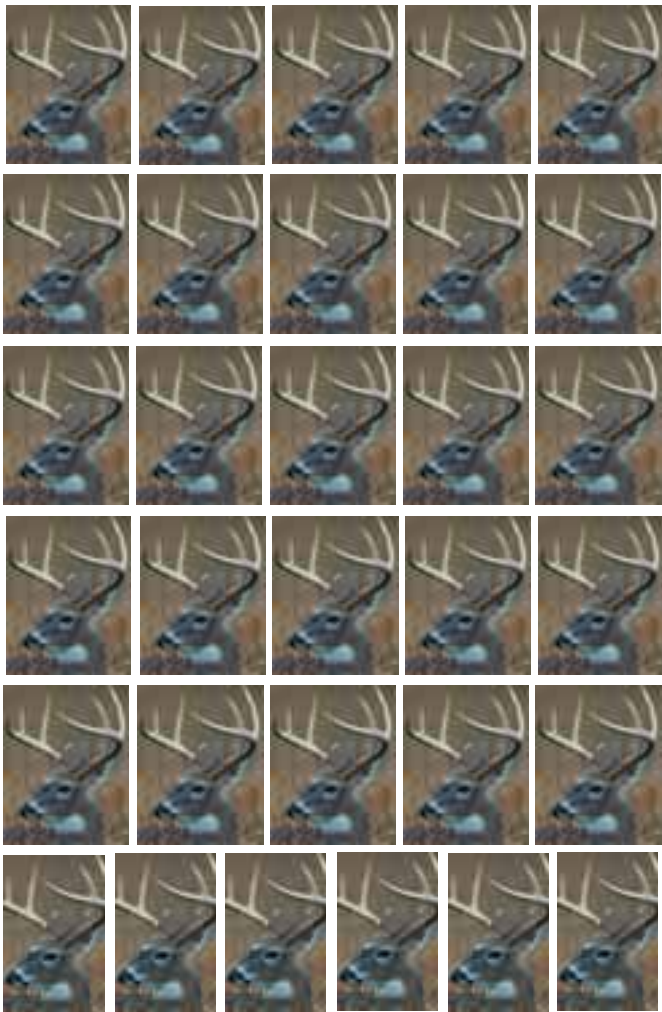
Mashburn drove in the winning run and finished the game three for four with a double and an RBI. Homedale jumped out to a 5-1 lead, but the Huskies rallied with two in the third inning and three in the fourth inning to tie the game.

Andrew McDannald led the Huskies offense finishing two for three with a double, a homerun and two RBI. Timothy Sevy was three for five with a double and an RBI and Cody Usabel was two for five with a double and two RBI. Trojan Chris Varuska picked up the win, going two innings and striking out six. He was also one for three at the plate. Jeff Lindbloom finished three for four with a double and two RBI. Against McCall, Williams picked up the win in seven innings, two runs, four hits eight strikeouts and one base batted.

Shawn Gibbs went one for three and slammed a triple and Varuska went two for three at the plate and scored two RBI. Mashburn led Homedale with a double and four RBI. "Nick did a great job on the mound for us today," Trojan coach Tim Fulwood said. "This was his first varsity start and he pitched a complete game four hitter, which is a real solid effort." Against New Plymouth, Varuska picked up the win pitching seven innings with one hit, 13 strikeouts and one base batted. Gibbs scored two RBIs and Mashburn scored on two RBIs.



Take your base
Anthony Butler, Marsing, is hit in the side by a fastball as Homedale's Jeff Lindbloom ties to catch the ball. Lindbloom finished with three for four with a double and two RBI in Homedale's 7-6 win.



52 issues of
The Owyhee Avalanche
under 31 bucks!
Call today! 337-4681



Beehive Cupcakes

Beehive Cupcakes

- 1 (13-ounce) bag Snickers Miniatures for Easter, chopped
 - 24 cupcake paper liners
 - 1 (18-ounce) box favorite cake mix
 - 2 (16-ounce) cans classic vanilla frosting
 - Yellow food coloring
 - 1 (14-ounce) bag Starburst Jellybeans
 - Original Fruits
 - 1/4 cup sliced almonds
 - 1 tube chocolate decorating frosting, with plain tip
 - 2 resealable plastic bags
1. Unwrap and chop all miniatures, set aside.
 2. Line 24 muffin cups with paper liners. Prepare cake mix, fold in chopped miniatures and bake according to package directions.
 3. Let cupcakes come to room temperature.
 4. In the meantime, tint frosting with yellow food coloring to desired shade. Frost top of each cupcake to cover.
 5. Spoon remaining frosting into resealable plastic bag. Cut off 1/4-inch from tip. To create a "hive" on each cupcake, pipe on frosting in spiral fashion, starting with bottom of hive and working up to top.
 6. Separate orange jellybeans from package. Arrange 3 to 4 jellybeans on each frosting hive. Gently squeeze chocolate frosting through tip in zigzag pattern over jellybeans.
 7. Angle an almond slice on each side of jellybeans as bee wings.

Makes 24 servings

Garden Cookies

- 1 (18-ounce) roll refrigerated sugar cookie dough
 - 2/3 cup all-purpose flour
 - 6 large green craft sticks
 - 1 (16-ounce) can prepared vanilla frosting
 - Assorted food coloring
 - 2 (14-ounce) bags M&M'S Brand Milk Chocolate Candies for Easter
 - 6 6-inch flowerpots or containers
 - 6 Styrofoam squares or floral oasis
1. Preheat oven to 350°F. Knead cookie dough and flour together until smooth.
 2. Roll out dough to 1/4-inch thickness. Cut out 6 tulip shapes (approximately 4 inches high and 3 inches wide) from dough, and transfer to cookie sheet. Gather up dough scraps and re-roll, if necessary.
 3. Slide a craft stick underneath each cookie, and press it into dough. Bake until golden brown, about 12 to 15 minutes. Transfer cookie sheet to wire rack.
 4. While cookies are cooling, divide vanilla frosting among 4 bowls. Using food coloring, tint to pink, light blue, yellow and pale purple. Spread frosting over each cookie, and arrange chocolate candies on top. Let dry, about 30 minutes.
 5. Fill flowerpots with Styrofoam.
 6. Press craft sticks into Styrofoam. Arrange green candies around craft sticks.

Makes 6 large cookies



Garden Cookies

Hatch a Bright Idea for Spring!

Welcome spring's bright, warm garden colors into the kitchen with recipes to bring joy and sunshine to your table. Keeping it fresh and simple will allow the imagination to create sweet treats for spring gatherings that will shower your family and friends with affection.

Be sure to stock up on the seasonal pastel color candies since these recipes can be made throughout the summer for showers and garden parties. The jellybeans are available year-round and will offer unlimited opportunities to decorate cakes and cupcakes that even the youngest child can help decorate.

For more spring recipes, decorating, gift ideas and family fun activities go to www.marsbrightideas.com



Speckled Egg Pretzel Nest

Speckled Egg Pretzel Nest

- 1 (11-ounce) bag Dove Milk Chocolate Eggs
 - 1 generous cup pretzel sticks
 - M&M'S Speckled Eggs
1. Place 10 to 12 chocolate eggs in metal bowl.
 2. Place bowl over simmering water and stir until chocolate melts. Remove bowl from saucepan and slightly cool chocolate by adding 2 to 3 more chocolate eggs and stirring until smooth.
 3. Add pretzel sticks to melted chocolate and stir carefully until completely coated.
 4. Form small nest with pretzels and use extra chocolate to drizzle over top of nest.
 5. Refrigerate approximately one hour; fill with speckled eggs.

Makes 1 nest

Springtime Strawberry Cake

- 1 (18-ounce) box favorite cake mix
 - 1 cup strawberry jam
 - 2 (12-ounce) containers whipped vanilla frosting
 - Red food coloring, paste or gel
 - 1 (14-ounce) bag Starburst Jellybeans
 - 1 (16-ounce) bag Starburst Tropical Fruit Chews
1. Prepare cake according to package directions. Bake in two 8-inch round cake pans.
 2. Let cakes come to room temperature. Cut both into matching strawberry shapes. Layer with strawberry jam sandwiched between.
 3. Tint frosting with red food coloring to desired shade, then frost entire cake.
 4. Separate yellow jellybeans from bag and arrange on cake, following photograph as a guide, to appear as strawberry seeds.
 5. Select and unwrap 14 green fruit chews. Warm in microwave 3 to 4 seconds, just to soften. Using fingers, press all fruit chews into one piece and slightly flatten. Using a rolling pin, roll out chews until wafer thin. Cut out two leaves. Gather up remainder and form stem. Place stem and leaves at top of cake.

Note: Can also be baked in 8-inch heart-shaped cake pans.
Makes 12 servings



Springtime Strawberry Cake

Looking back...

from the files of The Owyhee Avalanche and Owyhee Chronicle

25 years ago

April 26, 1979

Rec. district proposed

Members of the Homedale Chamber of Commerce voted Tuesday to spearhead a drive to create a recreation district for the Homedale area.

The recreation district would follow the same boundaries as the Homedale School District.

Under Idaho law, a recreation district can levy up to three mills to fund recreation projects.

The Chamber took the action partially in an attempt to help finance the operation of the community swimming pool. In recent years, the pool, which was financed with contributions, has operated on a irregular basis due to lack of funds for maintenance and operation.

Guffey bridge action

You just can't please everyone.

That appears to be the conclusion reached this week by the Owyhee County Board of Commissioners concerning the Guffey railroad bridge.

Recently, the commissioners verbally agreed to give the old railroad structure to Nampa contactor Tom Tillman. The move stirred up a storm of protest from groups around the valley who felt the bridge should be saved as an historical monument.

Monday, the bridge question was apparently settled when representatives of the state Historical Society came forward and offered to assume responsibility for the Guffey Bridge.

Tillman, however, has topped any action for the time being by asking for \$10,000 to release the commissioners from their verbal commitment to him. The contractor said he estimated he would have realized about \$100,000 profit from dismantling the abandon bridge. Tillman now says he wants \$10,000 to walk away from the bridge project. The commissioners say they don't have that kind of money. Owyhee County prosecutor Barry Wood plans to meet with Tillman to discuss the matter further.

At the Monday commission meeting prosecutor Wood told the commissioners that the original bill of sale giving the bridge to Owyhee County, listed the structure as "personal property." Wood said the county owns only the bridge itself, with the land at each end belonging to the State of Idaho.

Marsing patrons eye balloting

The Marsing School District patrons will be asked to approve two levies when they go to the polls May 15. Voters will also elect three members of the Marsing Board of Trustees. Voters will be asked to approve a five-year five mill plant facilities levy. The funds generated would be used to make school repairs, purchase school buses and other projects requiring capital outlay.

The second levy would be an "override," to generate approximately five mills for maintenance and operation of the schools.

Students selected

Four students from Homedale High school have been selected to attend the JETS computer Science Program at the U of I from June 11 thru 22, 1979. The student shave been selected from a large number of applicants and each is one of 80 outstanding students within the state of Idaho to be selected.

Susan Huter, daughter of Mr. and Mrs. Norm Huter, Robert Yamashita, son of Mr. and Mrs. Guy Yamashita, Steve Lejardi, son of Mr. and Mrs. John Lejardi, and Eric Lasselle, son of Mr. and Mrs. Richard Lasselle, all of Homedale.

Susan Huter also competed in Women in Engineering which is a two week extended program for girls applying to the JETS program. Susan has been selected third alternate in the state. There is a good possibility Susan will be able to attend this program because of her alternate position which is scheduled the two weeks beyond the normal JETS program.

50 years ago

April 29, 1954

Fire District Day celebration tomorrow for Marsing area

A big day of celebration is in store for the Marsing area tomorrow, when "Fire District Day" will give impetus to a day of celebration marking the arrival of a new \$11,000 fire truck for the newly formed Marsing Rural Fire District.

Snake River Mutual Fire Insurance company is presenting the truck as a gift to the district.

The program starts at 1:00 o'clock with a parade from the Marsing high school to the downtown area.

Howard Cullimore, president of the Snake River Mutual Fire insurance company, will present the fire truck to the Marsing Rural Fire District board, composed of Hugh Howard, Mark Marsing and Wayne Percifield. Honored guests, including mayors of surrounding towns, will be introduced from the speakers platform.

Sheriff Spud, of television fame, will be master of ceremonies, and KIDO-TV, Boise, will record the celebration for telecasting tomorrow evening.

Local jockeys win at Sage Acres Sun.

Dewey Hinshaw, local jockey, rode off with top honors at Sage Acres last Sunday by winning one race and placing second in two others. A leading rider locally, Dewey is anticipating his forthcoming debut at Portland Meadows as an apprentice jockey. He added a feather to his cap Sunday by beating out Jackie Arteburn, a former Homedale boy and rated second best jockey on the coast, who was flown in by plane form Portland to ride in the Sage Acres events.

Another promising local jockey is Robert Ferguson, who gathered one win and two third places in the races at Sage Acres last weekend. Ferguson will ride in the Green Mountain circuit this summer and will appear at Long Acres in Seattle this fall.

New officers

New officers for the Homedale Improvement Club were elected last Friday at the meeting of the organization held at the home of Mrs. Eunice Anderson.

Named as officers of the group were: Mrs. Fay Friel, president; Verda Johnston, vice president; Arminta Carter, secretary. The treasurer will be elected at the next meeting.

Jim Nettleton new president Cattlemen's Assn.

Jim Nettleton, Oreana, was elected president of the Owyhee County Cattlemen's Association at its 76th annual meeting held in Homedale last Saturday. Allen Sircin, Homedale, was named vice president, and Kenneth Downing, Murphy, was reappointed as secretary.

Elected to the board of directors were Frank Maher, Jordan Valley, Frank Blatzor, Sheaville, Gene Davis, Bruneau, E. I. Foreman, Murphy, and Ed Riddle, Riddle.

The election of officer ended the first convention of the association veer to be held in Homedale. The traditional site of the annual meeting has heretofore been at Silver City, Owyhee County's famous ghost town and former county seat, where thousands of tourists joined the cattlemen in their convention activities..

Old land mark to be torn down

One of the few remaining structures first built in Homedale will be torn down this weekend, when the Homedale Blacksmith Shop moves to its new location south of town near the labor camp.

The old landmark, erected in 1910 by Arthur Snyder of Silver City, was first operated by Mr. Snyder and Harry Townsend. Among the items of equipment still in use is an old anvil which was used in Silver City during the 1860's.

The Homedale Blacksmith Shop, owned by Ralph Thompson and operated by John Stephen, will open in its new location next week.

138 years ago

April 28, 1866

RAGING. The Jordan is becoming with the visited snow. It interferes with creek mining, but the banks are being ground down at a rapid rate. Ditches that were dug parallel with and along the mountain sides for collecting snow water for washing the higher bars, are now full and the water is being used day and night. The hydrolyte apparatus in front of the Idaho Hotel is in full blast from one of these mountain-side ditches. We are not informed as to the precise amount of any clean-ups from sluices, but bear of considerable quantities; enough, say, to supply a certain firm in Idaho City with material to make sixteen dollar dust out of twelve dollar stuff to pay packers and others unacquainted either with the process or metamorphosed currency when they have it presented to them. Such is business.

THE IDAHO HOTEL, Ruby, is to be enlarged and thoroughly relifted, and the work has already commenced. It is to be made second to none in Idaho. New rooms will be added and old and new fitted up neatly and in a manner that cannot help being gratifying to travelers. Every department will be enlarged and furnished in elegant style. The patronage or the house will justify the additional improvements.

COUNTY ROAD. We understand that the Committee selected to view a road to Snake River wish to be grided to some extract by the snow-banks on the route. This being the case, the Committee cannot perform their duty too soon, as the snow is melting away rapidly and in a few weeks even the bands will be gone.

THE FRAME WORK of the bridge across Long Gulch connecting with Washington Street, in Silver, is completed and is expected to be made passable the coming week. The road across Long Gulch from Jordan Street is about ready for teams. For a while it will intersect with the upper road opposite the Lincoln Mill.

CHANGE. Beachey's stages leave, the Office at the Idaho Hotel, every other day in the morning. By that they leave next time on tomorrow, the time will be easily remembered in future. The days of arrival and departure will be different each week.

BANK. Webb & King have commenced the construction of a house for banking and assaying pursuits in Silver. They expect to be in operation sometime in the early part of June.

SILAS SKINNER says the read from Baxter's Ranch up Jordan to this place will be passable for loaded wagons on and after the 10th of May. The grade is light all the way and only twenty miles to the Valley.

C.F. GLESTONE has purchased the Ruby Drug Store of Dr. Smith, and will continue the business as usual at the same place.

J. A. LITTLE showed us a small nugget of bullion weighing one ounce which he obtained from one pound of rock from the Virgoin City ledge, Flint District. The ledge is five feet wide, and from divers tests in all miniature ways it is believed all the rock will average \$100 per ton. A streak of four to five inches of exceedingly rich ore threads the vein, from which the test above mentioned was made. The process was very crude, using a common pan to amalgamate the rock.

APRIL WEATHER has been variable but not cold. Have had rain showers, squalls, mild zephyrs, powerful sunshine with a few slight freezes. It has not been as uncommon sight to see the sun shine, and snow and rain fall at the same time. Notwithstanding, we hear the weather spoke of reverently.

Commentary

Baxter Black, DVM

On the edge of common sense



Organic cigarettes

It is human nature to try and justify or lessen our own stupidity or bad habits.

“I admit I ate every bit of little Tammy’s birthday cake before the party...but I didn’t leave a mess.”

“Okay, Okay, I smoked marijuana...but I didn’t inhale.”

“How would you expect me to know I was speeding...I was talking on the phone!”

Bill sent me an ad from a national magazine that promoted American Spirit. It is a new brand of cigarettes whose selling point is: “100% additive-free natural tobacco certified under USDA standards - 100% U.S. grown tobacco!”

‘My gosh,’ I thought, ‘this is a great advertising gimmick!’ After all, the self-esteem of smokers has been on the decline for years. They’ve been forced to sneak puffs out by the dumpster on cold windy days. They’re haughtily condemned by the healthy self-righteous, pointed out as self-flagellating ash-mouthed outcasts. They are robbed at tax-point by state and federal lawmakers with the same disdain of those people that pull the wings off flies or tie cans to a cockroach’s tail. They have assumed the position of social loser, somewhere between homeless addict and third party candidate.

However, this new marketing ploy could be used to score points in the game of politically correct one-upmanship. Imagine two smoking exiles lighting up on the dock behind the No Child Left Behind/ Save the Whales/ Recycle Tin Foil/ Keep our Pockets Green – climatically controlled concrete and glass headquarters.

“I used to smoke Camels,” you say. “But then I read about the chemicals they used, the immigrant labor involved, and the paper from old redwood forests, so I went looking for a more environmentally friendly cigarette. One that is 100% certified organic and comes in a bio-degradable pack. I think of it as my contribution to a cleaner world.” Your fellow puffer looks at you, like she just saw a man hit himself on the head with a rubber hubcap hammer.

“You got a screw loose,” she says, “How’s it taste?”

“Like smoking a rope,” you reply, “But it’s a sacrifice I’m willing to make.”

Like two condemned prisoners at the bottom of the pecking order bragging on who has the best handcuffs, she considers your oral arguments, never asking if the organicity makes it less harmful.

“On second thought,” she says, “maybe I’ll try it. It would look good on my resume alongside ‘buys only Miracle Whip salad dressing and Free Range Galapagos turtle soup.’”

Wayne Cornell

Not important ... *but possibly of interest*



World War II veterans are leaving us at an increasing rate. I was fortunate. When I was in the Army, twenty years after the war, some of those men were still on active duty. They didn’t talk much about their wartime experiences. But once in a while we youngsters would get a glimpse of what some of them went through.

One of the vets, Sergeant Fred, was one of the most perpetually cheerful people I have ever known. He also held the distinction of being the shortest man in our company. He couldn’t have been much more than five feet tall in his combat boots.

One day I was talking to George, who served in the same company with Fred, in the Pacific, during World War II. I observed that Fred didn’t seem big enough to carry a M-1 rifle.

“Fred didn’t need a rifle,” George said, drying. “He had a truck.”

It was late in the war. The transportation company was busy hauling supplies to isolated U.S. outposts on a Pacific island. It was dangerous work because there were still a lot of Japanese troops around. The enemy conducted most of their operations at night so it was important for Americans to be back in their fortified camps before the sun went down.

One night Fred tarried too long. At dusk he found himself alone, driving a Deuce and a Half (two and one-half ton truck) down a winding jungle road, still miles from base. It was slow going because the truck was up to its axles in gooey mud.

As Fred rounded a corner there was just enough light to see what appeared to be a group of men squatting in the road only a few yards ahead. Fred

had only seconds to make a decision. The little soldier stomped the gas pedal all the way to the floor.

The big truck lunged forward, its spinning wheels throwing mud in all directions. The big olive drab machine was on top of (in some cases over) and through the Japanese platoon before anyone could react. Fred thought he was home free – until, only a few yards past the hit-and-run scene, the Deuce and a Half bogged down in the mud.

Some soldiers would have abandoned the truck and made a run for it. But Fred may have figured the mud hole was deeper than he was tall. In any case, he took what he considered the best option at that particular moment. He jumped out of truck cab and burrowed under vehicle, pulling the mud in behind him.

The Japanese soldiers apparently were too busy ducking to see where Fred went. But they spent a good share of the night stomping around the mired truck shouting what Fred took to be aspersions to his ancestry. It never occurred to them the American was only a few feet away, being very quiet in his mud burrow.

At sunrise the Japanese departed and a patrol from Fred’s unit came looking for his remains. Instead, they found a very muddy, tired, but very much alive American teenager, and a considerable number of dead enemy soldiers.

After hearing Sergeant Fred’s story, it was obvious why he was so cheerful. Every day he had lived since that night two decades earlier must have seemed like a bonus. The story also changed the way I looked at the miniature veteran. From that point forward, he seemed a lot taller.

Letters to the editor

Bruneau-Grand View School Safety

I just received a newsletter from the Bruneau-Grand View School District. I read that one of their goals is for students to be able to study without concerns for safety. I find this interesting since the Administration has implemented policies that directly threaten the safety of the students.

This past winter Grand View twice received heavy snow. The district administration chose to run buses even though the roads were so slick two of the buses slid off the road. One would think they would learn after the first snow, but the administration sent the buses out again on the second snow. Two of the bus drivers turned back when the roads were too slick. Rather than praise the drivers for protecting the students, one of the drivers was reprimanded and the students on the buses were given unexcused absences. Many of them were turned over to the truant officer!

In addition, Grand View Elementary has the honor of being the only school in Idaho that allows snowball throwing on the school grounds. During the second snow, one student lost his glasses and my

son had his face cut by gravel when he was hit by a slush ball. When confronted with this policy, Principle Delle stated that if the students chose to throw snowballs, they had to live with the consequences of their action. That would have been small comfort if my son had lost an eye!

We send our kids to school believing that they will not be put in danger. The Bruneau-Grand View School Administration is endangering our kids. They should be made accountable. What is the School Board going to do about it?

Angela Heredia
Bruneau-Grand View

Aman gives 110%

Gary Aman is a sheriff who gives 110% all the time. Regardless of what hour of the day, or what day of the week, Gary is on the job when needed. His experience and knowledge of Owyhee County are priceless.

Chris Salove
Owyhee County Commissioner
Marsing

Commentary

Letters to the editor

Among the best

My family’s long-standing link to, and ownership of property in, Owyhee County cause me to support Sheriff Gary Aman’s re-election bid. His open door attitude in office carries on the traditions of person-alized Owyhee County law enforcement. But, he supplements the tradition with modern concepts of administration and strategy which best protect the citizens. His efforts, in cooperation with the Com-missioners and other elected officials, have helped realize the benefits of 911 and mapping-addressing which will result in more efficient emergency response.

Through the past few years, in my work with the County, I have observed Gary’s effective manage-ment approach. He faces issues fully prepared on the facts. Administratively that helps him work with the Commissioners to obtain a workable bud-get, a budget which supports his staff yet recognizes the traditional conservatism of Owyhee County. Strategically, it allows him to effectively deal with potentially volatile situations such as the large gath-erings of people on several occasions into the area of the County bordering Nevada, with ever increas-ing search and rescue efforts, and with law enforce-ment problems created by the County’s remoteness.

His strength in protecting the property rights of citizens has been evidenced by the procedure he es-tablished for federal agents to work only through his office as the primary law enforcement officer of the County, and by his providing back country service and protection where ever possible. He helped in the drafting of a statute which now prohibits interfer-ence with the grazing preference.

Most of my career, until recently, was related to law enforcement---as a federal and state prosecutor in Maryland, a defense attorney in Maryland, and a defense paralegal in Idaho. If I were to pick a law enforcement team from the officers and agents with whom, and against whom, I worked, Gary Aman would be one of that team.

Fred Kelly Grant
Counsel to O.C. Commissioners

Seen it first hand

I guess it is time to respond. Joe your papers one-sided slant of this election for sheriff is understand-able. I’d support my own brother 100% if he were running for Sheriff.

Let me tell you of my experience with Jamie Aus-tin. As the Dare Officer I asked Jamie to help with a fund raiser for my 4-H group during the Owyhee County Fair. He was eager to participate.

He knew every youth that approached our booth-young and old-old I mean teenagers. He called them by name and they returned the greeting in a very respectful way.

If our youth can relate to an officer, be able to ap-proach him and not be intimidated. This says a lot about a police officer.

I know how our youth feel about our local and county departments. Where do I get my information from? Not from your paper Joe. I hear it first hand in my shop. Do you know what your officers nick names the kids have for them. I know Jamie’s it’s “Jamie”.

We have a terrible drug problem at the middle school. Kids tell me about being threatened with knives if they don’t participate in pot smoking.

Wake up people-
Don’t elect someone who refers to your children as “suckers” or “dum dums”

Elect someone that can attain your child’s respect. They are screaming for it. I know Jamie can. I’ve seen it first hand.

Mary Tibbett
Homedale

Use energy supply

By executive order, there must be a way to use some of our energy supply of petroleum products (gas and oil). If enough pressure can be put on con-gress and the United States, drilling may be allowed in the northern most outposts of Alaska and Canada after, of course, making agreements with them to al-low drilling rights.

We could then continue drilling along the coast of the United States and off shore into Mexico. We

could make an agreement with Mexico and other countries to the coast of Argentina.

With an established energy agreement, good jobs would be provided for many people and we would not be held hostage for an energy crisis in the fu-ture.

Use the bully pulpit of the presidency to appro-priate money for research of alternate and cleaner sources of energy. This could be a mixture of propane, alcohol, water, and gasoline with certain additives. Vehicles could then begin to switch from electric energy to alternate fuels.

If this became available during your next four years as President of the United States, you would have a most promising and outstanding place in American history.

Jack Streeter
Mountain Home

Accuracy in media Will Bush now fire Tenet?

Cliff Kincaid, Editor of the AIM Report

There was a time when John Kerry bragged about having the backing of unnamed foreign leaders. But now that Bob Woodward has hinted in his book, *Plan of Attack*, that Saudi Arabia is backing President Bush for re-election, the Democrats and their media allies are raising an uproar. Kerry, who had criticized Bush for rising oil prices, is now upset that they might be going down. He declared at a campaign stop that, “...if what Bob Woodward reports is true—that gas supplies and prices in America are tied to the American election, then tied to a secret White House deal—that is outrageous and unacceptable.”

Ironically, the claim now is that it is Bush, not Kerry, who has some influential foreign friends, and one of them is Prince Bandar of Saudi Arabia. Woodward says Bandar promised the White House that Saudi Arabia will lower oil prices in the months before the election. In the face of questions about this alleged promise, Woodward told George Stephanopoulos, “If you knew my reporting, you would have confidence in it.”

Unfortunately for Woodward, who is labeled “The Best Reporter of All Time” on a CBS News website, his record is not stellar. As a Washington Post editor, he was taken in by Janet Cooke and her fake story of a child heroin addict. The story won a Pulitzer Prize that had to be returned when it was exposed as a phony. Woodward kept his job and still makes millions of dollars on his books. By contrast, two top New York Times editors lost their jobs in the wake of the Jayson Blair fakery and fabrication scandal at that paper. Woodward was accused of fabricating his own account of a deathbed interview with CIA chief William Casey for his book *Veil*. Woodward is best known for helping to bring down a Republican president, Richard Nixon, in the Watergate scandal.

Nevertheless, Bush cooperated with Woodward, and the White House ordered other administration officials to cooperate as well.

Despite such assistance, Secretary of State Colin Powell denies the report that he was out of the loop on Iraq. Powell and National

Security adviser Condoleezza Rice both say that Woodward simply got the facts wrong.

While the book is described as critical of Bush’s Iraq war policy, one of the key charges, highlighted by the CBS 60 Minutes interview of Woodward, is that Bush was reluctant to go to war in Iraq and did so only after CIA director George Tenet assured him that Saddam Hussein possessed weapons of mass destruction.

If this is true, the real question is why Tenet, a Clinton holdover, remains as CIA director after apparently misleading the President.

The most “explosive” allegation, according to George Stephanopoulos of ABC World News Tonight, is that of a U.S.-Saudi oil deal. But this charge has also lost its sting. Woodward has backed away from reports that a “deal” was made. On CNN’s Larry King Live, he said that he is only reporting that the Saudis “hoped to keep oil prices low during the period before the election, because of its impact on the economy.” On the same show, Bandar said, “This is nothing unusual. President Clinton asked us to keep the prices down in the year 2000. In fact, I can go back to 1979, President Carter asked us to keep the prices down to avoid the malaise.”

Hoping for the worst, reporter John Roberts on the CBS Evening News with Dan Rather said, “The book kicks off what some Republicans say looks like yet another miserable week for White House officials—off-message, on the defensive, struggling to explain themselves, instead of leading on the issues.”

The irony is that, despite several “miserable weeks” already, a USA Today/CNN/Gallup poll finds that Bush’s lead over Kerry has widened to 51-46 percent. A Washington Post-ABC poll finds Bush leading 49-44 percent.

These extraordinary results mean that the liberal media assault—focusing on the Richard Clarke book, the 9/11 hearings, a lackluster presidential news conference, and the bad news from Iraq—has not had its intended effect.

And if the Woodward book itself is so damaging, why is it now featured on the “suggested reading list” of the Bush campaign website, along with books by Karen Hughes and Sean Hannity? It appears that the Washington Post reporter who helped bring down Richard Nixon is considered a helpmate by the current Republican administration. The book shows why Tenet should have been fired a long time ago.

Public notices

**OWYHEE COUNTY COMMISSIONERS MINUTES
APRIL 12, 2004
OWYHEE COUNTY COURTHOUSE MURPHY, IDAHO**

Present were Commissioner Harold Tolmie, Commissioner Dick Reynolds, Commissioner Chris Salove, Clerk Charlotte Sherburn, Treasurer Barbara Wright, Assessor Brett Endicott, Sheriff Gary Aman, and Jim Desmond.

The Board amended the agenda to include the following items: Appointment of Fair Board member, retroactive annual raise, increase in fees for Westown’s Disposal.

The Board adopted Resolution No. 04-11 Transfer of Funds from Sheriff’s “C” budget to Sheriff’s “A” budget to meet unexpected expenditures.

The Board approved three requests for cancellations on mobile homes that were no longer in the County. The approvals were on MH05S01E13001CT in the amount of \$70, MH03N04W338805T in the amount of \$55.35, and MH03N04W337191T in the amount of \$98.43.

The Board of Commissioners adjourned and convened as Board of Equalization. There was no business for the Board of Equalization. The Board adjourned as Board of Equalization and reconvened as Board of County Commissioners.

At 10:20 A.M. The Board called for executive session on a personnel matter. The Board moved out of executive session at 10:45. The Board moved to approve a termination letter.

The quarterly Jail inspection was conducted.

Bill Walsh from SIDRA met with the Board to discuss the Poker Run and Chili Feed slated for May 2nd. at Hemingway Butte. The club will have a trash pickup on May 16th.

The Board appointed Sean Dygert to the Fair Board to serve the remainder of the term vacated by Gwen Miller.

The Board approved an \$8.00 per load increase to Westown’s Disposal for waste hauling.

The Board approved an exemption for a building permit fee for the GrandView ambulance building.

Arlyn Tietz met with the Board for a review of the International Building Code. No action was taken.

The Board took action on the following Indigent and Charity cases presented. I.C. # 04-07 the Board approved with a reimbursement agreement. I.C. # 04-11 the Board denied incomplete application. I.C. # 04-09 the Board denied not the obligated County. I.C. # 04-14 the Board denied the 10 day approval and the 31 day emergency applications, residency can not be established. I.C. # 04-01 the Board approved the Finding & Conclusions on the hearing held.

The Board approved the minutes for the April 5th meeting.

The Board approved annual raises to be paid retroactive for employees not receiving a raise

for FY 2004.
There being no further business the Board moved for adjournment.

The complete minutes can be viewed in the Clerk’s office.
Harold Tolmie, Chairman
Attest: Charlotte Sherburn, Clerk
4/28/04

**NOTICE OF SCHOOL TRUSTEE ELECTION
Homedale Jt. School District No. 370
Canyon and Owyhee Counties, Idaho**

Public Notice is hereby given according to law, and the requisite action of the Board of Trustees of Homedale Jt. School District No. 370, Canyon and Owyhee Counties, Idaho, that the annual school trustee election will be held on May 18, 2004.

Only those qualified electors residing in Trustee Zone No. 1 may vote for a Zone No. 1 candidate. Only those qualified electors residing in Trustee Zone No. 5 may vote for a Zone No. 5 candidate. The purpose of said election shall be to elect one trustee to serve for a period of three years from the date of the election one trustee who resides within trustee zone no. 1 and one trustee from trustee zone no. 5.

Trustee Zones No. 1 and 5 are more specifically described as follows:

TRUSTEE ZONE 1 – Beginning at the intersection of the western district boundary and the Snake River. Easterly on the Snake River and its southern bank to 1st St. West. South on 1st St. West to California Ave. West on California Ave. to the west city limits of Homedale. Southerly on the city limits to Idaho Ave. West on Idaho Ave. to Succor Creek. Southwest on Succor Creek to the west district boundary to the beginning.

TRUSTEE ZONE 5 – Beginning at the intersection of the west Homedale city limits and California Ave. East on California Ave. to 1st St. West. North on 1st St. West a short distance and extended directly north to the Snake River. Easterly on the Snake River to Idaho Ave. West on Idaho Ave. to Railroad Ave. Northwest on Railroad to 6th St. West. North on 6th St. West to Washington Ave. West on Washington Ave. to the city limits. Northerly on the city limits to the beginning.

As provided by Idaho Code, Section 33-502A no write-in vote shall be counted unless a declaration of intent has been filed with the District Clerk indicating that the person desires the office and is legally qualified to assume the duties of school trustee if elected. The declaration of intent shall be filed not later than fourteen (14) days before the day of the election.

The polls will be open from 1:00 p.m. until 8:00 p.m. at the following location:

Zones 1 & 5: Homedale School District Administrative Offices, 116 East Owyhee Avenue Homedale, Idaho

An elector must be a registered voter who has resided in this state and in this school district at

least thirty (30) days preceding the election.

Qualified electors who expect to be absent from the District on May 18, 2004, or who will be unable, because of physical disability or blindness, to go to a polling place, may vote by absentee ballot. Written application for an absentee ballot may be made to the Clerk of the Board of Trustees on a form made available at the School District Administrative Offices, 116 East Owyhee Ave., Homedale, Idaho on Monday through Friday, from 8:00 a.m. to 4:30 p.m. Such application must be made no later than 5:00 p.m., May 17, 2004. Electors applying in person may obtain their ballots starting April 20, 2004 Electors applying by mail should submit their requests as soon as possible. The absentee ballot must be received by the Clerk no later than 8:00 p.m. on the day of the election.

By Order of the Board of Trustees,
Faith K. Olsen, Assistant Clerk
4/28-5/12/04

The following application(s) have been filed to appropriate the public waters of the State of Idaho: 51-12994

US DEPT OF INTERIOR
BUREAU OF LAND MANAGEMENT
1387 S VINNELL WAY
BOISE ID 83709-1657
Point(s) of Diversion SWSNW S22 T10S R02E OWYHEE County Source UNNAMED STREAM
Tributary To BIG JACKS CREEK
Use: STOCKWATER STORAGE 04/01 To 11/30 2 AFA
Use: WILDLIFE STORAGE 01/01 To 12/31 2 AFA
Total Diversion: 2 AFA
Date Filed: 09/12/2003
Place Of Use: STOCKWATER STORAGE
T10S R02E S22 SENW
Place Of Use: WILDLIFE STORAGE
T10S R02E S22 SENW
Permits will be subject to all prior water rights. Protests may be submitted based on the criteria of Sec 42-203A, Idaho Code.

Any protest against the approval of this application must be filed with the Director, Dept. of Water Resource, Western Region, 2735 Airport Wy, Boise ID 83705 together with a protest fee of \$25.00 for each application on or before 05/10/2004. The protestant must also send a copy of the protest to the applicant.
KARL J DREHER, Director
4/21,28/04

The following application(s) have been filed to appropriate the public waters of the State of Idaho: 51-12995

US DEPT OF INTERIOR
BUREAU OF LAND MANAGEMENT
1387 S VINNELL WAY
BOISE ID 83709-1657
Point(s) of Diversion NENWSW S11 T11S R02E OWYHEE County Source SPRINGS Tributary To BIG JACKS

CREEK
Point(s) of Diversion NWNESW S11 T11S R02E OWYHEE County Source SPRINGS Tributary To BIG JACKS CREEK
Use: STOCKWATER 04/01 To 11/30 0.02 CFS
Use: WILDLIFE 01/01 To 12/31 0.02 CFS
Total Diversion: 0.02 CFS
Date Filed: 09/12/2003
Place Of Use: STOCKWATER\ T11S R02E S11
NENW SWNW SENW
Place Of Use: WILDLIFE T11S R02E S11
NENW SWNW SENW
Permits will be subject to all prior water rights. Protests may be submitted based on the criteria of Sec 42 203A, Idaho Code.

Any protest against the approval of this application must be filed with the Director, Dept. of Water Resource, Western Region, 2735 Airport Wy, Boise ID 83705 together with a protest fee of \$25.00 for each application on or before 05/10/2004. The protestant must also send a copy of the protest to the applicant.
KARL J DREHER, Director
4/21,28/04

NOTICE

Rodney E. and Linda K. Redford of PO Box 328 Marsing, ID 83639 filed application no. 71007 with IDWR to transfer a water right with a 1954 priority date totaling 0.18 cfs. The purpose of the transfer is to move his point of diversion to his property. The applicant will use ground water tributary to the Snake River from a French drain and a point of diversion from the Snake River itself on his property approximately 650 ft upstream for original location. The applicant’s property is located on the Snake River just north or downstream of the City of Marsing water treatment plant.

For specific details regarding the application, please contact IDWR Western Region at 208-334-2190 or visit www.idwr.state.id.us with detail provided under “new water right applications”. Protests may be submitted based on the criteria of Sec 42-222, Idaho Code. Any protest against the proposed change must be filed with the Department of Water Resources, Western Region, 2735 Airport Wy, Boise ID 83705-5082 together with a protest fee of \$25.00 for each application on or before May 10, 2004. The protestant must also send a copy of the protest to the applicant.

KARL J DREHER, Director
4/21,28/04

NOTICE

Marshall Becker of 32251 Mud Flat Rd and David C. Unruh of Hc 85 Box 375 both from Grand View Id 83624 filed application no. 71050 with IDWR to transfer two water rights with 1969 priority dates totaling 4.76 cfs. The purpose of the transfer is to allow the applicants to move their 463 acres of allowable irrigation within their 614-acre farm from season to season for a more efficient irrigation system. The same three wells will be used in this system. This farm is located approximately 8 miles south and

5 miles west of Grand View, ID.

For specific details regarding the application, please contact IDWR Western Region at 208-334-2190 or visit www.idwr.state.id.us with detail provided under “new water right applications”. Protests may be submitted based on the criteria of Sec 42-222, Idaho Code. Any protest against the proposed change must be filed with the Department of Water Resources, Western Region, 2735 Airport Wy, Boise ID 83705-5082 together with a protest fee of \$25.00 for each application on or before May 10, 2004. The protestant must also send a copy of the protest to the applicant.

KARL J DREHER, Director
4/21,28/04

**NOTICE OF SCHOOL TRUSTEE ELECTION
MARSING JOINT SCHOOL DISTRICT NO. 363
OWYHEE AND CANYON COUNTIES, IDAHO**

NOTICE IS HEREBY GIVEN:

according to the law and the requisite action of the Board of Trustees of Marsing Joint School District No. 363, Owyhee and Canyon Counties, that the annual school trustee election will be held on **May 18, 2004**, and the polls at said election will be open between the hours of 12:00 noon and 8:00 p.m. on said day.

Only those qualified voters residing in Trustee Zone No. **Two (2)** may vote for a Zone No. **Two (2)** candidate. Only those qualified voters residing in Trustee Zone No. **Four (4)** may vote for a Zone No. **Four (4)** candidate. The purpose of said election shall be to elect one trustee to serve for a period of three (3) years from the date of election one trustee who resides within Trustee Zone No. **Two (2)**, and one trustee who resides within Trustee Zone No. **Four (4)**.

Trustee Zone No. 2 and Trustee Zone 4 are more specifically described in the legal descriptions available at the Marsing Joint. School District Office located at 209 8th Avenue West, Marsing, ID. Declaration of candidacy must be filed with the Clerk of the Board of Trustees not later than 5:00 p.m. on the fifth Friday prior to the day of election. Each declaration of candidacy must bear the name of the candidate, state the term for which declaration of candidacy is made, and bear the signature of not less than five (5) school district electors resident of the trustee zone of which the candidate is resident. As provided by Idaho Code, Section 33-502A no write-in vote shall be counted unless a declaration of intent has been filed with the District Clerk indicating that the person desires the office and is legally qualified to assume the duties of school trustee if elected. The declaration of intent shall be filed not later than 4:00 p.m. fourteen (14) days prior to the day of election **May 18, 2004**. The Polls will be open from 12:00 p.m. until 8:00 p.m. at the following location: Marsing High School Library for both Trustee Zone **Two (2)** and Trustee Zone **Four (4)**. An elector must be a registered voter who has resided in this state and in this school

Public notices

district at least thirty (30) days preceding the election. That said election shall be by secret and separate ballot. Absentee voting shall be permitted as provided by Idaho Code Section 33-406, as amended. Any qualified trustee zone elector who expects to be absent from the District on the day of the election or who will be unable, because of physical disability or blindness, to go to the polling place may make written application to the Clerk of the District for a ballot of the kind to be voted on at election, which application shall contain the name of the elector and the elector's present address. As provided by Idaho Code, Section 33-406, as amended, application for an absentee elector's ballot shall be filed with the Clerk not later than 5:00 p.m. one day prior to the opening of the polls. The absentee ballot must be received by the Clerk, no later than 5:00 p.m. the day before the election, before such ballot may be counted.

Dated this Twenty Eighth day of April, 2004

DEBORAH HOLZHEY
CLERK, BOARD OF TRUSTEES
MARSING JOINT SCHOOL DISTRICT NO. 363
4/28-5/5/04

NOTICE OF RESCHEDULED TRUSTEE'S SALE

The following described property will be sold at public auction to the highest bidder, payable in lawful money to the United States, At the entrance to the Owyhee County Courthouse, Highway 78, Mile Marker 29 1/2, Murphy, ID 83650, on 05/24/2004 at 11:30 am, (recognized local time) for the purpose of foreclosing that certain Deed of Trust recorded 03/30/1998 as Instrument Number 224408, and executed by JACK COWAN, AND MILDRED COWAN, as Grantor(s), in favor of AMERICA'S WHOLESALE LENDER, as Beneficiary, to STEWART TITLE OF BOISE, INC., the Current Trustee of record, covering the following real property located in Owyhee County, state of Idaho:

SEE ATTACHED EXHIBIT A – LEGAL DESCRIPTION

The Trustee has no knowledge of a more particular description of the above referenced real property, but for purpose of compliance with Idaho Code, Section 60-113, the Trustee has been informed that the street address of, 311 PATTON STREET, MARSING, ID 83639 is sometimes associated with said real property.

Bidders must be prepared to tender the trustee the full amount of the bid at the sale in the form of cash, or a cashier's check drawn on a state or federally insured saving institution. Said sale will be made without covenant or warranty, express or implied, regarding title, possession or encumbrances to satisfy the obligation secured by and pursuant to the power of sale conferred in that certain Deed of Trust.

The default for which this sale is to be made is:

Failure to pay the monthly payment due 06/01/2003 of

principal, interest and impounds are subsequent installments due thereafter; plus late charges, with interest currently accruing at 7.500% per annum; together with all subsequent sums advanced by beneficiary pursuant to the terms and conditions of said Deed of Trust, and any supplemental modifications thereto. The principal balance owing as of this date on said obligation is \$40,620.69, plus interest, costs and expenses actually incurred in enforcing the obligation thereunder and in this sale, together with any unpaid and /or accruing real property taxes, and/or assessments, attorneys' fees, Trustee's fees and costs, and any other amount advanced to protect said security, as authorized in the promissory note secured by the aforementioned Deed of Trust.

Therefore, the Beneficiary elects to sell, or cause said trust property to be sold, to satisfy said obligation.

NOTICE IS HEREBY GIVEN THAT THIS FIRM IS ATTEMPTING TO COLLECT A DEBT AND ANY INFORMATION OBTAINED WILL BE USED FOR THAT PURPOSE, AND THAT THE DEBT MAY BE DISPUTED. THE ABOVE GRANTORS ARE NAMED TO COMPLY WITH SECTION 45-1506(4)(a) IDAHO CODE. NO REPRESENTATION IS MADE THAT THEY ARE, OR ARE NOT, PRESENTLY RESPONSIBLE FOR THIS OBLIGATION.

DATED: April 19, 2004
STEWART TITLE OF BOISE, INC.

Successor Trustee
Linda D. Irwin-Trust Officer
Name and Address of the Current Trustee is:

STEWART TITLE OF BOISE, INC.

9196 West Emerald, Suite 100
Boise, ID 83704
PHONE: (800) 281-8219 for information.

EXHIBIT A
LEGAL DESCRIPTION

LOTS 5 AND 6 OF BLOCK 4 OF THE AMENDED PLAT OF BLOCKS 1,2,3,4,5, AND 6 OF PATTONS SUBDIVISION, MARSING, OWYHEE COUNTY, IDAHO, FILED DECEMBER 4, 1937 AS INSTRUMENT NO. 54610 IN THE OFFICE OF THE COUNTY RECORDER, OWYHEE COUNTY, IDAHO.

LOTS 19 AND 20 OF BLOCK 9 OF PATTONS SECOND SUBDIVISION, MARSING, OWYHEE COUNTY, IDAHO, FILED JULY 24, 1940 AS INSTRUMENT NO. 60527 IN THE OFFICE OF THE COUNTY RECORDER, OWYHEE COUNTY, IDAHO.

4/28-5/5,12/04

NOTICE OF TRUSTEE'S SALE

On the 27th day of July, 2004, at the hour of 10:45 A.M., of said day, (recognized local time), in the Office of lobby of the **Owyhee County Courthouse, Murphy**, in the County of Owyhee, State of Idaho.

First American Title Company of Idaho, Inc., an Idaho Corporation, as successor trustee, will sell at public auction, to the highest bidder, for certified funds, or

the equivalent, which is lawful money of the United States of America, all payable at the time of sale in compliance with Section 45-1506(9) Idaho Code, the following described real property, situated in the County of Owyhee, State of Idaho, and described as follows, to-wit:

Lot 2, Block 1, BIG SKY ESTATES NO. ONE, Homedale, Owyhee County, Idaho, according to the official plat thereof on file and of record in the office of the Recorder for Owyhee County, Idaho.

This Trustee's Sale is subject to any bankruptcy filing, pay-off, reinstatement, or any other conditions of which the Trustee is not aware of, and that would cause the cancellation of this sale. Further, if any of these conditions exist, this sale may be null and void. The successful bidder's funds shall be returned, and the Trustee and/or the Beneficiary shall not be held liable to any successful purchaser(s) or bidders, at the Trustee's Sale, for any damages.

The Trustee has no knowledge of a more particular description of the above referenced real property, but for purposes of compliance with Section 60-113 Idaho Code, the Trustee has been informed that according to the County Assessors office, the address of **606 Selway Dr, Homedale**, Idaho, is sometimes associated with said real property.

Said sale will be made without covenant or warranty regarding title, possession or encumbrances to satisfy the obligation secured by the pursuant to the power of sale conferred in the deed of trust executed by **HECTOR BAUTISTA, a single man**, as grantors, to FIRST AMERICAN TITLE COMPANY OF IDAHO, INC., an Idaho Corporation, as successor trustee, for the benefit and security of The Money Express Financial Services, Inc., an Idaho corporation, as beneficiary, recorded June 28, 2001, as Instrument No. 236356, and assigned to WASHINGTON MUTUAL BANK, FA, successor in interest to Washington Mutual Home Loans, Inc., fka PNC Mortgage Corp. of America, as beneficiary by assignment recorded June 28, 2001, as Instrument No. 236357, Mortgage Records of Owyhee County, Idaho.

THE ABOVE GRANTORS ARE NAMED TO COMPLY WITH SECTION 45-1506(4)(A), IDAHO CODE. NO REPRESENTATION IS MADE THAT THEY ARE, OR ARE NOT, PRESENTLY RESPONSIBLE FOR THIS OBLIGATION.

The default for which this sale is to be made is the failure to pay when due, under Deed of Trust Note, the monthly payments for Principal, Interest and Impounds of \$631.73, due per month for the months of September through December, 2003 and January, 2004 and all subsequent payments until the date of sale or reinstatement, with a monthly late charge accruing at \$25.27, uncollected late charges are due in the amount of \$126.35, with interest accruing at 7.25% per annum, and continuing to accrue from August 1, 2003. The principal balance owing as of this date on the obligation secured by said Deed of Trust is \$66,062.29, plus accruing interest, costs and advances. All delinquent amounts are now due, together with accruing late charges and interest, unpaid and accruing taxes, assessments, trustee's fees, attorney's fees, and any amounts advanced to protect the security associated with this foreclosure and that the beneficiary elects to sell or cause the trust property to be sold to satisfy said obligation.

Date: March 24, 2004
FIRST AMERICAN TITLE COMPANY OF IDAHO, INC.
By Elisha M. Ricky, Trust Officer
FA-17399/flo-wm
First American Title Company of Idaho
Trust Dept. 1-208-375-0455
4/7,14,21,28/04

NOTICE OF TRUSTEE'S SALE

The following described property will be sold at public auction to the highest bidder, payable in lawful money to the United States, At the entrance to the Owyhee County Courthouse, Highway 78, Mile Marker 29 1/2, Murphy, ID 83650, on 08/12/2004 at 11:30 am, (recognized local time) for the purpose of foreclosing that certain Deed of Trust recorded 12/18/2002 as Instrument Number 241967, and executed by JERRY W PERKINS, as Grantor(s), in favor of MORTGAGE ELECTRONIC REGISTRATION SYSTEMS, INC., as Beneficiary, to STEWART TITLE OF BOISE, INC., the Current Trustee of record, covering the following real property located in Owyhee County, state of Idaho.

LOT 7 AND 8 OF BLOCK 85 OF THE AMENDED TOWN-SITE PLAT OF HOMEDALE, OWYHEE COUNTY, IDAHO, ACCORDING TO THE OFFICIAL PLAT THEREOF ON FILE AND OF RECORD IN THE OFFICE OF THE RECORDER FOR THE OWYHEE, COUNTY, IDAHO.

The Trustee has no knowledge of a more particular description of the above referenced real property, but for purpose of compliance with Idaho Code, Section 60-113, the Trustee has been informed that the street address of, 202 E WYOMING AVENUE, HOMEDALE, ID 83628 is sometimes associated with said real property.

Bidders must be prepared to tender the trustee the full amount

of the bid at the sale in the form of cash, or a cashier's check drawn on a state or federally insured saving institution. Said sale will be made without covenant or warranty, express or implied, regarding title, possession or encumbrances to satisfy the obligation secured by and pursuant to the power of sale conferred in that certain Deed of Trust.

The default for which this sale is to be made is:

Failure to pay the monthly payment due 12/01/2003 of principal, interest and impounds are subsequent installments due thereafter; plus late charges, with interest currently accruing at 6.375% per annum; together with all subsequent sums advanced by beneficiary pursuant to the terms and conditions of said Deed of Trust, and any supplemental modifications thereto. The principal balance owing as of this date on said obligation is \$113,104.39, plus interest, costs and expenses actually incurred in enforcing the obligation thereunder and in this sale, together with any unpaid and /or accruing real property taxes, and/or assessments, attorneys' fees, Trustee's fees and costs, and any other amount advanced to protect said security, as authorized in the promissory note secured by the aforementioned Deed of Trust.

Therefore, the Beneficiary elects to sell, or cause said trust property to be sold, to satisfy said obligation.

NOTICE IS HEREBY GIVEN THAT THIS FIRM IS ATTEMPTING TO COLLECT A DEBT AND ANY INFORMATION OBTAINED WILL BE USED FOR THAT PURPOSE, AND THAT THE DEBT MAY BE DISPUTED. THE ABOVE GRANTORS ARE NAMED TO COMPLY WITH SECTION 45-1506(4)(a) IDAHO CODE. NO REPRESENTATION IS MADE THAT THEY ARE, OR ARE NOT, PRESENTLY RESPONSIBLE FOR THIS OBLIGATION.

DATED: April 8, 2004
STEWART TITLE OF BOISE, INC.

Successor Trustee
Linda D. Irwin-Trust Officer
Name and Address of the Current Trustee is:

STEWART TITLE OF BOISE, INC.

9196 West Emerald, Suite 100
Boise, ID 83704
PHONE: (800) 281-8219 for information.

4/28-5/5,12,19/04

We Do Windows!

(Window Envelopes, that is.)

And we also do letterheads, business cards, multiple-part forms, newsletters, booklets, tickets, flyers, certificates, pads, and regular envelopes, too!

Owyhee Publishing Co., Inc.

P.O. Box 217 • Homedale, ID • 337-4866

Public notices

NOTICE OF TRUSTEE’S SALE

On the **28th** day of **July, 2004**, at the hour of **10:45 A.M.**, of said day, (recognized local time), in the Office of lobby of the **Owyhee County Courthouse, Murphy**, in the County of Owyhee, State of Idaho.

First American Title Company of Idaho, Inc., an Idaho Corporation, as successor trustee, will sell at public auction, to the highest bidder, for certified funds, or the equivalent, which is lawful money of the United States of America, all payable at the time of sale in compliance with Section 45-1506(9) Idaho Code, the following described real property, situated in the County of Owyhee, State of Idaho, and described as follows, to-wit:

SEE ATTACHED EXHIBIT A
This Trustee’s Sale is subject to any bankruptcy filing, pay-off, reinstatement, or any other conditions of which the Trustee is not aware of, and that would cause the cancellation of this sale. Further, if any of these conditions exist, this sale may be null and void. The successful bidder’s funds shall be returned, and the Trustee and/or the Beneficiary shall not be held liable to any successful purchaser(s) or bidders, at the Trustee’s Sale, for any damages.

The Trustee has no knowledge of a more particular description of the above referenced real property, but for purposes of compliance with Section 60-113 Idaho Code, the Trustee has been informed that according to the County Assessors office, the address of **6708 Sunset Lane, Marsing**, Idaho, is sometimes associated with said real property.

Said sale will be made without covenant or warranty regarding title, possession or encumbrances to satisfy the obligation secured by the pursuant to the power of sale conferred in the deed of trust executed by **MERLE I BICKNELL, JR AND CATHARINE A BICKNELL, husband and wife**, as grantors, to FIRST AMERICAN TITLE COMPANY OF IDAHO, INC., an Idaho Corporation, as successor trustee, for the benefit and security of First Security Bank, N.A., as beneficiary, recorded February 11, 2000, as Instrument No. 231413, and assigned to MORTGAGE ELECTRONIC REGISTRATION SYSTEMS, INC., (solely as nominee for Lender, and Lender’s successors and assigns), as beneficiary by assignment recorded February 21, 2001, as Instrument No. 235092, Mortgage Records of Owyhee County, Idaho.

THE ABOVE GRANTORS ARE NAMED TO COMPLY WITHSECTION45-1506(4)(A), IDAHO CODE. NO REPRESENTATION IS MADE THAT THEY ARE, OR ARE NOT, PRESENTLY RESPONSIBLE FOR THIS OBLIGATION.

The default for which this sale is to be made is the failure to pay when due, under Deed of Trust Note, the monthly payments for Principal, Interest and Impounds of \$1,383.89, due per month for the months of July through De-

cember, 2003 and January, February, 2004 and all subsequent payments until the date of sale or reinstatement, with a monthly late charge accruing at \$45.34, uncollected late charges are due in the amount of \$851.32, with interest accruing at 8% per annum, and continuing to accrue from June 1, 2003. The principal balance owing as of this date on the obligation secured by said Deed of Trust is \$149,256.18, plus accruing interest, costs and advances. All delinquent amounts are now due, together with accruing late charges and interest, unpaid and accruing taxes, assessments, trustee’s fees, attorney’s fees, and any amounts advanced to protect the security associated with this foreclosure and that the beneficiary elects to sell or cause the trust property to be sold to satisfy said obligation.

Date: March 23, 2004
FIRST AMERICAN TITLE COMPANY OF IDAHO, INC.
By Elisha M. Ricky, Trust Officer
FA-17501/7307.21086
First American Title Company of Idaho
Trust Dept. 1-208-375-0455
Attached to Notice of Trustee’s Sale

PARCEL I:
A part of the Northeast Quarter of the Southwest Quarter, Section 10, Township 2 North, Range 4 West, Boise Meridian, Owyhee County, Idaho.

COMMENCING at the Northeast corner of said Northeast Quarter of the Southwest Quarter (C Quarter corner) said corner monumented with a found truck axle set flush with ground; thence

South 00° 27’ 09” East a distance of 200.27 feet along the Easterly boundary of said Northeast Quarter of the Southwest Quarter to a point on the centerline on the South Canal said point being the POINT OF BEGINNING; thence continuing

South 00° 27’ 09” East a distance of 904.86 feet along the Easterly boundary of said Northeast Quarter of the Southwest Quarter to a half inch diameter iron pin; thence

South 87° 45’ 31” West a distance of 198.63 feet to a half inch diameter iron pin; thence 276.14 feet along the arc of 250.00 foot radius, tangent curve left the long chord of which bears

South 56° 06’ 57” West a distance of 262.31 feet to a half inch diameter iron pin; thence

North 20° 18’ 58” West a distance of 370.10 feet to a point on the centerline of said South Canal; thence

North 53° 52’ 37” East a distance of 81.47 feet along the centerline of said South Canal; thence 93.24 feet along the arc of a 104.25 foot radius, tangent curve right, the long chord of which bears

North 79° 30’ 00” East a distance of 90.17 feet along the centerline of said South Canal; thence

South 74° 52’ 38” East a distance of 113.08 feet along the centerline of said South Canal; thence 176.26 feet along the arc of a 96.48 foot radius, tangent curve left, the long chord of

which bears

North 52° 47’ 03” East a distance of 152.75 feet along the centerline of said South Canal; thence

North 00° 26’ 54” East a distance of 445.54 feet along the centerline of said South Canal; thence 163.55 feet along the arc of a 128.30 foot radius, tangent curve right, the long chord of which bears

North 36° 58’ 00” East a distance of 152.70 feet along the centerline of said South canal; thence

North 73° 29’ 06” East a distance of 59.46 feet along the centerline of said South Canal.

PARCEL II:
A part of the Southwest Quarter of the Southwest Quarter, Southeast Quarter of the Southwest Quarter and the Northeast Quarter of the Southwest Quarter, Section 10, Township 2 North, Range 4 West, Boise Meridian, Owyhee County, Idaho.

A 60.00 foot wide road and utility easement lying 30.00 feet on each side of the following described centerline:

BEGINNING at the Southwest corner of said Southeast Quarter of the Southwest Quarter (West 1/16 corner) said corner monumented with a found 3-inch diameter brass disk; thence 219.00 feet along the arc of 215.62 foot radius, tangent curve right, the long chord of which bears

North 29° 27’ 47” East a distance of 209.71 feet to a 1/2 inch diameter iron pin; thence

North 58° 33’ 39” East a distance of 303.36 feet to a 1/2 inch diameter iron pine; thence 148.74 feet along the arc of a 250.00 foot radius, tangent curve left, the long chord of which bears

North 41° 31’ 01” East a distance of 146.55 feet to a 1/2 inch diameter iron pin; thence

North 24° 28’ 23” East a distance of 1,044.30 feet to a 1/2 inch diameter iron pin; thence 276.14 feet along the arc of 250.00 foot radius, tangent curve right, the long chord of which bears

North 56° 06’ 57” East a distance of 262.31 feet to a 1/2 inch diameter iron pin; thence

North 87° 45’ 31” East a distance of 198.63 feet to a point on the Easterly boundary of said Northeast Quarter of the Southwest Quarter said point being the terminus of the easement and monumented with a 1/2 inch diameter iron pin.

Tina Albright
Trustee Verification
FA-17501/RCF
4/7,14,21,28/04

NOTICE OF TRUSTEE’S SALE

On Tuesday, the 27th day of July, 2004, at the hour of 11:00 a.m. of said day, on the steps of the Owyhee County Courthouse, Hwy. 78, Murphy, Owyhee County, State of Idaho, **HOLGER UHL** as successor Trustee, will sell at public auction, to the highest bidder, for cash, in lawful money of the United States, all payable at the time of sale, the following described real property, situated in the County of Owyhee, State of Idaho, to-wit:

This parcel is a portion of

PUBLIC HEARINGS ON OWYHEE COUNTY INITIATIVE

The Board of Owyhee County Commissioners will conduct three public hearings on the Owyhee Initiative. The first will be on May 13, 2004 at the Community Center in Oreana, beginning at 7:00 p.m. The second will be on May 14, 2004 at the Marsing Community Center in Marsing, from 1:00 to 4:00 p.m. The third will be May 17, 2004 at the Legion Hall in Bruneau, beginning at 7:00 p.m.

The draft proposal submitted by the Owyhee Initiative Work Group is available at Owyheeinitiative.org, or a copy can be obtained by e-mail from owyheeinitiative@cableone.net or by calling 250-4166. A copy, with illustrative maps, is available at the office of the AVALANCHE, and at the office of the County Clerk in the Owyhee County Courthouse in Murphy for public review.

At the public hearings, the components of the draft proposal will be presented by members of the Owyhee Initiative Work Group. The floor will then be open for questions and comments from the public. Written comments by the public can be submitted in writing, either electronically to owyheeinitiative@cableone.net or by land mail to “Owyhee Initiative” 620 Fletcher, Nampa, Idaho, 83686. Comments will be accepted until May 18, 2004. Comments, in writing or in public statements at the hearings, should be directed to the specific language of the draft proposal, and objections to components of the draft proposal should be accompanied by alternative solutions to land use conflicts. Witnesses who testify against components of the draft proposal will be asked by the Board of Commissioners for alternatives which will solve land use conflicts and allow economic stability for livestock grazing and protection of private property rights.

After the public hearings, the Board of County Commissioners will direct its representative to the Work Group as to how to vote the County’s interest at the next Work Group meeting on May 20, 2004.

4/28-5/5/04

Northeast Quarter of the Northeast Quarter of Section 21, Township 3 North, Range 5 West, Boise Meridian, Owyhee County, Idaho, an is more particularly described as follows:

BEGINNING at the Northwest corner of said Northeast Quarter of the Northeast Quarter; thence

South 89° 26’ 51” East along the North boundaryof said Northeast Quarter of the Nrotheast Quarter a distance of 576.90 feet; thence

South 10° 55’ 17” West a distance of 723.36 feet; thence

South 8° 22’ 25” West a distance of 612.72 feet to a point on the South boundary of said Northwest Quarter of the Northeast Quarter; thence

North 89° 28’ 55” West along said South boundary a distance of 352.91 feet to the Southwest corner of said Northeast Quarter of the Northeast Quarter; thence

Noth 0° 06’ 00” East along the West boundary of said Northeast Quarter of the Northeast Quarter a distance of 1318.83 feet to the POINT OF BEGINNING.

The Trustee has no further knowledge of a more particular description of the above referenced real property, but for purposes of compliance with Section 60-113 Idaho Code, the Trustee has been informed that the address of 27197 Market Road, Homedale, Idaho 83628, is sometimes associated with this real property.

Said sale will be made without covenant or warranty regarding title, possession or encumbrance to satisfy the obligation secured by and pursuant to the power of sale conferred in the deed of trust executed by **RICHARD D. KOELZER AND SANDRA KOELZER**, husband and wife, as Grantor, to **FIRST AMERICAN TITLE**, as Trustee, and to **HOLGER UHL**, a member of the Idaho State Bar, as successor Trustee, for the benefit and secu-

rity of **NEW CENTURY MORTGAGE CORPORATION**, as Beneficiary, recorded August 6, 2001, as Instrument No. 236705, Mortgage records of Owyhee County, Idaho, and to **U.S. BANK, N.A., AS TRUSTEE FOR NEW CENTRUY HOME EQUITY LOAN TRUST, SERIES 2001-NC2 ASSET BACKED PASS-THROUGH CERTIFICATES**, as successor Beneficiary by Assignment recorded March 11, 2004, as Instrument No. 247029, records of Owyhee County, Idaho.

The default for which this sale is to be made is:

Failure to make principal and interest payments on the original loan amount of \$168,300.00, with interest thereon at the rate of 8.99% per annum, with monthly payments of \$1,352.97 for principal and interest due and owing for the month of October 2003, and each and every month thereafter, through the date of reinstatement or sale, along with all costs, fees and late charges associated therewith; and the balance owing as of March 15, 2004, on the obligation secured by said Deed of Trust is \$175,513.42; consisting of \$165,777.51 principal, \$8,114.07 accrued interest, \$712.57 late charges, and \$909.27 escrow impound credit, with interest accruing on the unpaid principal at an annual rate of 8.99%.

The above Grantor(s) are named to comply with Idaho Code §45-1506(4)(a). No representation is made that they are, or are not, presently responsible for this obligation.

DATED this 26th day of March, 2004.

HOLGER UHL
1101 W. River Street, Suite 110
Boise, Idaho 83702
Ocwen/Cuellar; 100387489
4/7,14,21,28/04

Public notices

NOTICE OF SCHOOL TRUSTEE ELECTION
Joint School District No. 365
Elmore and Owyhee Counties,
Idaho

Public Notice is hereby given according to law, and the requisite action of the Board of Trustees of Joint School District No. 365, Elmore and Owyhee Counties, Idaho, that the annual school trustee election will be held on Tuesday, May 18, 2004.

Only those qualified electors residing in Trustee Zones No. 2 & 4 may vote for a candidate in their respective zone. The purpose of said election shall be to elect a trustee from Trustee Zone No. 2 and Trustee Zone No. 4, each to serve for a period of

three years.

TRUSTEE ZONE NO. 2 - Bruneau Area

TRUSTEE ZONE NO. 4 - Grand View Area

As provided by Idaho Code, Section 33-502A, no write-in vote shall be counted unless a declaration of intent has been filed with the District Clerk indicating that the person desires the office and is legally qualified to assume the duties of school trustee if elected. The declaration of intent shall be filed not later than fourteen (14) days before the day of election.

The polls will be open from 12 o'clock Noon until 8 p.m. at the following locations: Bruneau Elementary School; Grand View

Elementary School; George Bennett, Jr. residence, Elmore County

Qualified electors who expect to be absent from the District on May 18, 2004, or who will be unable, because of physical disability or blindness, to go to a polling place, may vote by absentee ballot. Written application for an absentee ballot may be made to the Clerk of the Board of Trustees on a form made available at the district office, 660 Boise Ave., Grand View, Idaho on Monday through Friday, from 8 a.m. to 5 p.m. Such application must be made no later than 5 p.m. Monday, May 17, 2004. Electors applying in person may obtain their ballots starting April

20, 2004. Electors applying by mail should submit their requests as soon as possible. The absentee ballot must be received by the Clerk no later than 8:00 p.m. on

the day of the election.

By Order of the Board of Directors

Katherine R. Sellman, Clerk
4/28-5/5/04

Please enter my subscription to the Owyhee Avalanche now! Enclosed is \$

NAME

ADDRESS

CITY

STATE ZIP

SUBSCRIPTION RATES:

Owyhee County.....\$31.80

Canyon, Ada and Malheur Counties.....\$37.10

Elsewhere\$42.00

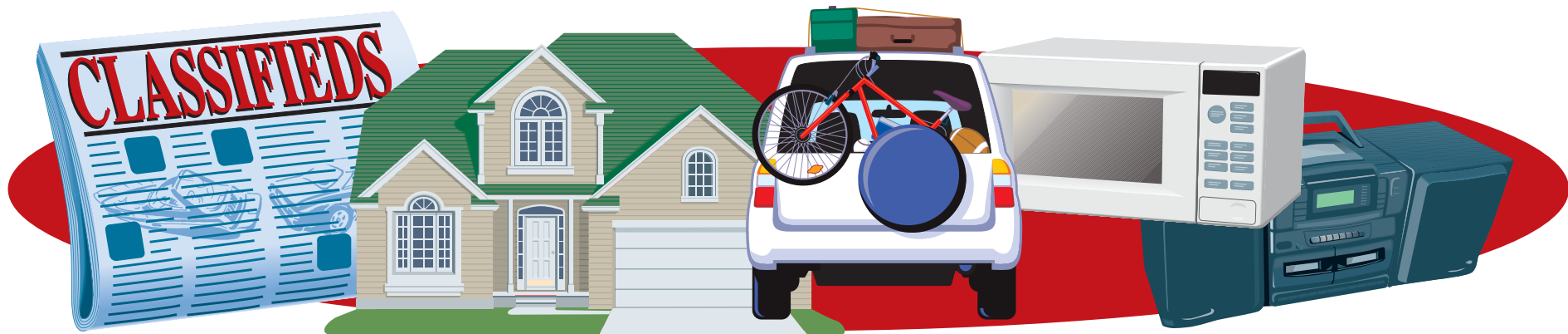
Idaho Sales Tax included

The Owyhee Avalanche

P.O. BOX 97 • HOMEDALE, ID 83628

THE BUSINESS DIRECTORY

CERTIFIED LOCKSMITH  HARVEY'S AUTO PARTS LOCKSMITH & TOWING KEYS MADE • LOCKS REPAIRED EMERGENCY OPENINGS 211 MAIN ST. MARSING, ID • 896-4643	ELECTRICIAN H&H ELECTRIC Serving Owyhee County for 25 years Jeff Haylett 337-4881	CARPENTRY I HAVE JUST MOVED MY BUSINESS TO WILDER. WE'VE BEEN SERVING CANYON COUNTY FOR THE PAST 11 YEARS. WE WELCOME YOUR BUSINESS. CALL FOR FREE ESTIMATES. NO JOB TOO SMALL. BOB PAASCH 482-7204 BOB'S CARPENTRY	SAND & GRAVEL  Owyhee Sand, Gravel & Concrete 337-5057 573-2341 • 573-2343 • 573-2339 HOMEDALE, IDAHO ALL TYPES OF ROCK & DIRT STATE CERTIFIED DRAIN ROCK FREE ESTIMATES ON ROADS & DRIVEWAYS <i>Chuck, Ray & Bill Maxwell</i>	ACCOUNTING  BOWEN & PARKER Mikeal D. Parker, CPA • 19 E. Wyoming • P.O. Box 905 • Homedale, ID 83628 337-3271 Ron V. Bowen, CPA • 624 16th Ave S. • P.O. Box 41 • Nampa, ID 83653 467-6900
ADVERTISING YOUR AD HERE! \$10.00 PER WEEK OWYHEE AVALANCHE 337-4681	ADVERTISING YOUR AD HERE! \$10.00 PER WEEK OWYHEE AVALANCHE 337-4681	CHIROPRACTIC MARSING CHIROPRACTIC Open Most Saturdays Adult from \$25 Walk-ins welcome! Back to work and play fast! Office: 208-896-5520	SPORTING CLAYS  IDAHO SPORTING CLAYS 337-4826 3 Miles south on Hwy. 95 from Homedale, turn West on Graveyard Point rd., go 4 miles and turn South on Sage. Go over the first hill and we're on the left. GIFT CERTIFICATES AVAILABLE	CONSTRUCTION LAND CONSTRUCTION BACKHOE & DUMP TRUCK SERVICE General Excavation Settling Pond Cleanout Trenching • Demolition Sand & Gravel Delivery (208) 337-3333 Hourly or Flat Rate Bids
SIDING CONTRACTORS  MGM Siding Contractors <i>William T. Bruce</i> 1024 W. Finch Dr. Nampa • 465-0214 • Fax 465-9831 <i>Vinyl, Steel & Aluminum Siding</i> <i>Vinyl Windows</i>  BALCOA Master Contractor Craftsmanship You can Trust	PAINTING OWYHEE PAINTING CO. 15 YEARS EXPERIENCE INTERIOR / EXTERIOR RESIDENTIAL / COMMERCIAL SENIOR DISCOUNT FREE ESTIMATES ALL WORK GUARANTEED REFERENCES AVAILABLE TONY WEYMOUTH - OWNER (208) 896-5686	BED LINERS <i>Quality work from start to finish</i> Auto Body by Alan <i>Auto Glass • Frame & Unibody Repair • Collision Repair • Custom Paint • All Work Guaranteed</i> Alan Bahem Rt. 1, Graveyard Pt. Rd. Homedale, ID 83628 (208) 337-4837 Mobile 250-4837	AUTO BODY  AA PC REPAIR Tired of your computer not working right? I will come to your home! Competitive Rates • Industry Certified "Outstanding Service" Homedale, Idaho 337-6235	COMPUTER REPAIR
CHIROPRACTIC HOMEDALE CHIROPRACTIC CENTER J. Edward Perkins, Jr. D.C. 111 S. Main - Homedale - 337-4900 <i>Your Pain and Wellness Clinic</i> <ul style="list-style-type: none">• Low Back Pain• Leg Pain• Neck Pain• Headache Pain• Shoulder Pain• Carpal Tunnel Syndrome• Whiplash/ Car Accident Injuries• Work Injuries• Sports Injuries• Custom Orthotics (Shoe inserts) Call 208/337-4900 for a Free Consultation	CHIROPRACTIC Homedale Clinic Terry Reilly Health Services Chip Roser, MD Richard Ernest, CRNP Janine Franco, PA 108 E. Idaho, Box 1058 Homedale, Idaho 83628 337-3189, Night 466-7869 Mon., Wed., Thurs. & Fri. 8:30 - 5:00 Tuesday 8:30 am - 9:00 pm	HEALTH SERVICES Marsing Clinic Terry Reilly Health Services Faith Young Peterson, CRNP Family Nurse Practitioner Chip Roser, MD Janine Franco, PA 201 Main Street, Marsing, Id. 83639 896-4159, Night 466-7869 Mon., Tues., Wed., & Fri. 8:30 - 5:00 Thursday 8:30 am - 9:00 pm	HEALTH SERVICES Homedale Dental Terry Reilly Health Services Eight 2 nd Street West, Homedale, Idaho 83628 337-6101 Ronald Fife, DDS Monday - Thursday 8:00-1:00/2:00-5:00 Accepting Emergency Walk-Ins Daily We Accept Medicaid	DENTAL SERVICES
TOOLS & BUILDING SUPPLIES BOWEN BUILDING SUPPLY & TOOL RENTAL 337-5665 31 W. Idaho, Homedale	LIVESTOCK FEED & SUPPLIES  RAFTER 4 FEED CO. 302 S. MAIN • P.O. Box 788 Homedale, Idaho 83628 PHONE: 208-337-4656 • FAX:208-337-5529 rafter4@frontiernet.net	HOME CARE <i>A Special Touch</i> Home Care, Inc. <i>In YOUR Home Care</i> Licensed Staff • Medicare Medicaid • Private Pay 216 W. Idaho PO Box 933 Homedale, ID 83628 (208) 337-5343	CONSTRUCTION  R-S CONSTRUCTION Land Leveling • Earth Moving Fields • Ponds • Roads Building Sites 22026 Market Road Parma, Idaho Robert Shippy Rob Shippy 208/722-6727 208/722-6122	



SERVICES

JJ Excavation and Hauling, TOP SOIL, and gravel delivery, excavator and trucks for hire. Road building, dozer, water truck and road grader. Free estimate. 208-337-4822 or 573-5700.

Dump Truck & Back hoe service, ditch cleaning & demolition. Call Steve at 465-5196 or 371-4285.

Best price in the valley for on-site computer cleaning and repair. Call Tom or Colette at 208-896-4676, Technical Computer Cleaning.

Tim's Small Engine Repair: Complete servicing & repair available on lawnmowers, tillers, wheel-line motors, motorcycles, ATVs, all 2 & 4 cycle power equipment. 30916 Peckham Rd., 5 miles west of Wilder. 482-7461

Campbell Plumbing: Service, remodel, new construction. Bonded and insured. Reasonable rates. Call 896-4328 or 880-3885

Owyhee Mountain Lawn Care: Lawn & flower bed maintenance, pruning, fertilizing, small landscape jobs, sprinkler blowouts, free estimates call Tyler 880-1573

M&S Repairs & Remodels. All types of remodeling + construction, plumbing, fencing, roofing & add-ons. New homes & older homes. Call 337-5041 for estimate.

Full line Laundromat open to the public 75¢ wash & dry. 6920 Old Bruneau Hwy, Marsing.

Crazy Critters Preschool opening for '04-'05 school year. Morning/afternoon classes available for 3-5 year olds. Located at Donna's Daycare. Convenient to Homedale/Wilder. Now doing pre-registration. For prices/information call Donna or Melissa 337-6180.

Need spring cleaning done? Experienced house cleaner can do the job on homes & offices, window/carpets. 482-6735

LPN - Wilder Clinic

West Valley Medical Center has an exceptional opportunity available for an LPN in the Wilder Clinic. Schedule is M-F, 8:30-5:00 pm, no weekends/holidays.

We offer a generous salary and excellent benefits package. Please send resume to West Valley Medical Center, 1717 Arlington Ave., Caldwell, ID, 83605, or fax to 208-455-4057

or e-mail to hrdept@hcahealthcare.com



YARD SALE

Estate sale. Tools, household, crafts. Fri. April 30 & May 1 at Rivers Edge RV Park 28522 Lower Pleasant Ridge Rd, Wilder.

Moving sale. May 1st 9-3. Up right freezer, dryer/washer, recliner, TV, garden tools, misc. Sale is in garage behind house. Cash only. 320 W. Owyhee, Homedale 337-5869

HELP

WANTED

Quality Control Person for Laminated Beam and Decking Plant: Immediate opening. Quality control person will be responsible for the daily testing, monitoring of production parameters, assisting machine set up and fine tuning, and lead person type of responsibilities. We are looking for a person who has a Bachelor Degree in Forest Products or similar work experience. Should be mechanically inclined, self motivated, supervisory skills, and computer literate. \$27,500 DOE. Filler King Company has been a successful and growing business for over 15 years in Homedale, Idaho. We supply laminated beams to wholesale distributors all over the west and mid west. Our laminated decking products are distributed all over the United States. To find out more about Filler King Co. find us on the Internet at www.fillerking.com. Please send resume to Jim@Fillerking.com or fax a copy to 208-337-3139. Contact Person: Jim Griswold, General Manager.

VEHICLES

'85 Ford Short box 4WD, good tires, runs good \$1000. Call 337-5610 or 899-2998

Clean 1997 Chevy pickup, 4-wheel drive, 3-door extended cab, V-8, auto, new tires, only 97,000 miles. \$12,500. 337-4866 or eves., 337-3149.

86 Honda TRX350 Fourtrax 4x4 ATV \$3000. OBO 337-3744

'67 Ford Galaxie 4 dr, good cond. with another Galaxie for parts. Both for \$499. The good one needs a starter, the parts car has good glass and metal. 880-8987 or 482-9270

1967 Pontiac Catalina 389 motor needs to be installed, good tires, tinted glass, body straight \$800 OBO Call 337-6250 eves/leave msg. **Clean 1991 Cadillac Seville,** tinted glass, dependable \$2500 Call 896-4390 or 841-4126

2000 Saturn LW2 wagon 4dr, 55,000 miles, power window/locks, AC, cassette/CD player \$9,400. Call 337-3405

OPEN NOW

Laundromat in Wilder

Under new management

Open 8am-10pm

7 days a week

\$1 per wash

Sell AVON products

482-6550

Se habla Espanol

FOR SALE

Used tractor parts 100's of salvaged farm tractors and combines. Nampa Tractor Salvage, 9055 Hwy 20, Nampa, ID 83687 (208) 467-4430

Roll ends: Great for packing material, building fires, lining birdcages or for your kids to doodle on. The Owyhee Avalanche, Homedale

Italian leather couch and love-seat. Brand new still wrapped in plastic. Retail \$2450. Must sell \$895. 208-888-1464

Bedroom set 5-piece cherry set. Brand new in box. List \$1450. Must sell \$399. 208-888-1464

Bed-queen pillowtop mattress set. Brand new, still in plastic. Must sell \$159. **Queen orthopedic set.** Brand new, must sell \$129. 208-866-7476

King-sized pillowtop mattress set. New, in bag, with warranty. Must sell \$199. 208-866-7476

Cherry Sleigh bed. Solid wood. New in box. Value \$850. Sacrifice \$295. 208-888-1464

Fun piano lessons, never too young or old. All ages and levels, home schoolers/learning disabilities welcome. Reasonable rates 467-6244

Must sell my collection of cups & saucers, angels, and music boxes \$5 ea. + up. Call 337-3676 to see.

Matching auto GE washer & dryer, works good. \$100. RV roof top AC, works good \$75, small camper shell \$40. 896-5027

Maternity clothes, huge selection 484-2827

White sewing machine, new top of the line. \$99.99 Call 208-454-5658

WANTED

Need a Tom turkey have too many females. Call 896-4671

DID YOU EVER THINK OF ADVERTISING AS ...



hiring an employee who could contact more than 7,200 homes and tell them about your merchandise or services?

An employee who could say exactly what you want, and work for what you can afford to pay?

We have.

REACH EVERY HOME IN THIS MARKET

The Owyhee Avalanche

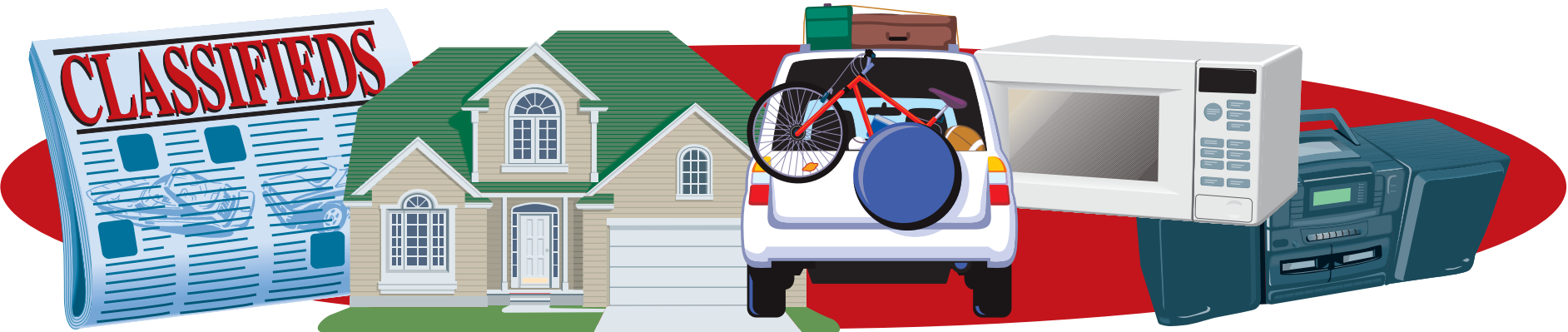
P.O. Box 97

Homedale ID 83628

Have a news tip?

Call us!

337 4681



REAL ESTATE

5 acres. 8 mi S.E. of Marsing, rental house shop, carport & fence. Also building lot with spectacular view. 2 bedroom mobile home on site-to be sold separately \$74,995. Call 463-4501

Fleetwood Factory Outlet! Buy factory direct + save. 800-721-5016

Zero Down! Land home purchases. 2 yrs good credit and a job for 2 yrs and we can probably help you. 800-721-5016

Homedale - 2 New Homes available in Silver Sage Sub. Quality throughout. 3 bdrm, 2 bath, vaulted ceilings, double garage, front sod & u.g. irrigation. Some 0 down financing available. Call Owyhee Realty 337-4634

Homedale - \$45,000 for a 2002 Fleetwood, 3 bed, 2 bth 1100 sq.ft. Home all set up in Snake River RV Resort. Like new with lots of extra's. Includes covered deck, storage shed, extra built in cabinets in kitchen. Walk to fishing or relax & watch the view of Snake River from your windows or deck. Call Owyhee Realty 337-4634

Homedale - 3 bdrm 2 bth with all the extras. Ready to move right in. Fenced backyard, full auto u.g. irrigation, RV pad, fully insulated, heated garage. Great landscaping. \$99,000. Owyhee Realty 337-4634

Royal Vista Estates - great views, great prices. Choose from these 1 to 5 acre lots which feature paved roads, pressurized irrigation, underground services. Call Owyhee Realty 337-4634

In Murphy lot w/2 bdrm home, lg storage room, 12x16 storage shed, lg carport, plus covered porches \$39,000. 896-5027

Home w/large shop, sets on Claytonia Fish & Game pond.

Home is approx. 3000 sq.ft. 3 bdrm 3 bth, family & office. Shop is 32 ft x 84 w/2 bay doors. This one of a kind place sits on 5 acres. 896-5350 or 412-7435

Homedale - Only \$65,000 for 3 bdrm, 2 bath 1670 Sq. Ft. home. Close to shopping. Fully fenced yard. Features a full basement with kitchen and outside entrance. Great buy. Owyhee Realty 337-4634.

Wilder - 3 bedroom home with complete remodel inside & out. \$65,000. See inside to appreciate. Owyhee Realty 337-4634

Unique mission style 3 bdrm 2 bth home within walking distance of river, schools, park & downtown. Master suite w/ balcony, unfinished basement, completely restored & remodeled inside & out. Asking \$84,300. Call 337-4763 or 880-1178

FARM AND RANCH

Alfalfa seed, treated, Ranger and Vernal 90¢ per lb. 887-3450 or 409-4457

Custom Swathing & Baling, call Dan Sevy 249-1064 or 455-8310 also straw for sale.

Stallion Service AQHA registered black 15.1 hands excellent ranch & rope horse. Fabulous

disposition King and Three Bar breeding. \$450. Call 337-4443

4H & FFA Project Lamb Auction, Sat. May 1st @ 1pm Western Idaho Fair Grounds. 9 champions from last years sale. 887-0886

1st cutting alfalfa hay for sale \$2.50 a bale 90-100 lb. bales 989-3912

Alfalfa seed, save money farmer to farmer, will deliver many grasses and clovers. Ray Odermott 208-465-5280

Used hay equipment. New Holland Swathers, Hesston Big Balers, Hesston Small Balers, NH Rakes. New Holland Crop Cutter 3x4 Balers. No More Grinding. Call Corby Garrett 208-250-7207

Tractor-Ford Golden Jubilee. Front-end loader, corrigator, blade, harrow \$5995. **Generator**-new 8KW Hardy Diesel \$3200. 208-482-4314, Wilder

FOR RENT

Available now 5x10 & 10x10 units and RV & boat storage, Marsing Storage 343-9855 or 867-2466

Cabin for rent at McCall. Fully furnished 3bdr, 2bth cabin with year round access. Located 3 miles from McCall. Special rates 3/20 to 5/20/2004. Contact Accommodation Services.com or 1-800-551-8234 and ask for Zig's Place.

Mobile home spaces. Clean & quiet lots on the Snake River. \$225/mth. Includes: water, sewer & garbage. For info call Snake River RV Resort in Homedale 337-3744

Homedale charming 3bed 1bath home RV storage, shed & carport. Newly remolded throughout & new landscaping \$550/mth. + Security 337-3744

1 bdrm trailer 1 bath \$275. mo + \$150 deposit 337-5044 or 880-1762

40x60 shop commercial, roll up doors, office, high ceilings. Available in May \$550/mth + Security 337-3744

Homedale 2 bedroom mobile home w/Range Fridge in quiet park \$375 + deposit + reference. 337-3873 or 337-3425

2 bdrm apt. for rent. Washer/dryer hookup, stove & fridge furnished, NO yard for children. 337-4444

3 bdrm MH, south of Marsing. NO pets, clean, remodeled \$375 mo. + deposit. 989-1055 or 896-4458

3 bdrm 1 bth house for rent in country on Allendale & Hoskins \$560. mo. + deposit. Call 337-5041

2 bdrm house for rent, NO pets, inquire at 328 California.

THANK YOU

The family of Grace Martin would like to thank the staff at Owyhee Health & Rehab Center for their assistance to our family and the care and compassion they extended to her during her stay. We would also like to thank the members of Mountain View Nazarene Church for their support & prayers.

ALFRED KANDLER ESTATE
AUCTION
RANCH & HORSE DRAWN EQUIPMENT
SATURDAY, MAY 1, 2004 • 10:30 A.M MST

Location: From Notus, Idaho go south on Notus Rd. 1/2 mi. to Boise River Rd., west on Boise River Rd. approx. 4 mi. to site. Signs will be posted.

Terms: Cash, same day bankable check, no credit cards, no buyers premium, all items sold "as is where is", lunch available, free coffee.

Tractors: MF 1085 Dsl 5400 hrs. cab, a/c; JD-A single front

Trucks: 1965 Chevy C-60 – 26,000 orig. mi., 4&2 sp. w/combo bed & hoist; 1951 Ford F-5, 12 ft. bed w/hoist

Pick-ups: 1981 Chevy custom 20 p.u. w/4 spd; 1966 Chevy 3/4 ton p.u. w/4 spd & shell; 1951 Ford F-1 parts only; 1967 Ford Galaxy 500 AT

Trailers: WW 6x20 tongue pull stk trlr w/ctr gate; 8x16 heavy built tilt-bed machinery trailer

Forage and Haying Equip: GEHL dsl self-prop chopper w/hay hd; NH 1032 stack wagon w/auto tie; NH 311 14x18 Baler;

3 pt. MF & Ford mowing machines

Equipment: Hutch Master 12' offset disc; JD 9' disk; 4 – 6' harrows; 3 pt 12' triple K; 3 pt disc diker; Miskin carry-all; IHC 8' & 10' grain drills; MF 4 row corn planter; 3 pt Valley Mound 5 row corrigator; Ace 3 pt ditcher; ACE 3 pt 100 gal spray rig w/20' booms and handgun; 3 pt 12" post auger; JD & MF pto manure spreaders; GEHL feed wagon; 8"x40" PTO grain auger; 124 gal LP weed burner

Syphon Tubes: 4-4"x72"; 20-3"x72"

Hay: Approx. 20 tons CLEAN oat hay, 2 string bales

Shop: welder; drill w/press; grinder; chain saw; rototiller; bolt bin; hand-crank service station oil pump; some hand tools

Livestock Equipment: TECO chute; 2 Powder River Round Bale Feeders; steel creep feeder; 30 mixed panels

Horse Drawn & Collectibles: very clean and hard to find doctor's buggy, exc. condition; also as clean as you'll find collector's hitch wagon, Must see to appreciate quality of these two items! grain drill; fertilizer box; manure spreader; corn planters; 3' grain drill; plow; mower; 2 Jackson Forks; 2 Fresno scrapers; portable saw; 15 milk cans; hay derrick; old stock saddle; 1 old harness set; Wisconsin air cooled power plant buzz saw; Sled bedder; ripper; cultivator; iron wheels; antique oil cans and cream cans; some scrap iron.

Auctioneers Note: Preview a.m. of auction; This is only a partial list

HAWKINS AUCTION SERVICE

Steve B. Hawkins & Lonnie Rudd, Auctioneers
208-405-9441 • 541-473-3839

COLDWELL BANKER

ASPEN

GEORGE WILSON
JOHN CONTI • LORI RASMUSSEN
OFFICE: 896-5312
GEORGE: 890-4770 • JOHN: 880-7829 • LORI: 861-9192
View Properties At: www.idaholand4u.com

WANT OUT OF THAT MANUFACTURED HOME PARK?
Here are some Options.....

- **5 1Acre Lots in The Warren Sub @ \$23,900.** Additional acreage available for lease. Accepting pre owned units, subject to owner's approval.
- **5 lots available in Canyon Estates Sub** complete with well & septic on 1.5 - 2.47 Ac starting @ \$29,900.
- **3 Lots 3-5 Acres each on Hwy 95** beginning @ \$25,000.
- **57 Acres in Owyhee Co** with a couple of splits left.
Great horse property, currently in alfalfa. Live water \$175,000.

ACREAGE • DARIES • FARMS • RANCHES • RIVER PROPERTIES

SPACES FOR RENT
HOMEDALE'S NICEST
MOBILE HOME PARK

- Spacious single or double wide spaces
- Convenient to shopping, schools & city services
- Clean, quiet family park
- On site manager
- Cable T.V. Available
- Will accept older homes in good condition

(We also have mobile homes for sale ready to move into NOW with low down payment)

Sunset Village
Mobile Home Park
401 S. Main • Homedale, Idaho
See manager space #23

(208) 337-5804
or 884-1700

Please enter my subscription to the Owyhee Avalanche now! Enclosed is \$ _____

NAME _____

ADDRESS _____

CITY _____

STATE _____ ZIP _____

SUBSCRIPTION RATES:

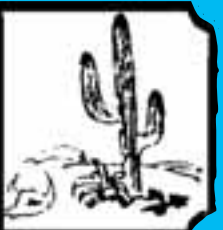
Owyhee County.....\$31.80
Canyon, Ada and Malheur Counties.....\$37.10
Elsewhere\$42.00

Idaho Sales Tax included

The Owyhee Avalanche
P.O. BOX 97 • HOMEDALE, ID 83628



Snake River Mart



CINCO DE MAYO



Boneless Beef
Chuck Roast



\$1.49
lb.

**Top Sirloin
Steak**



\$3.29
lb.

Boneless

Dole
Shredded Lettuce



79¢
ea.
10 oz. Bag

Mangos



69¢
ea.

**Pork Shoulder
Steak**



\$1.19
lb.

Market Pack
Pork Sausage



\$1.29
ea.

Jumbo
Yellow Onions



39¢
lb.

Red Potatoes



29¢
lb.

Boneless Skinless
Chicken Thighs

\$1.49
lb.

Market Pack Bacon

\$1.69
lb.

Pork Spare Ribs

\$1.89
lb.

IQF Tilapia

99¢
lb.

O-M 12 oz.

Meat Bologna

2 \$3

51-60

Nautilus Shrimp

\$3.99
lb.

Oranges

39¢
lb.

Lettuce

59¢
ea.

2 lb. Bag

Carrots

89¢
ea.

5 lb. Bag

Russett Idaho Potatoes

59¢
ea.

Avacodos

79¢
ea.

Lemons & Limes

6 \$1

Shasta Soda



3 \$6
for
12 Pack Cans

Hostess 8 Pack

Chocolate Cupcakes

2 \$5

All Coke Products

Coca Cola



2 \$7
for
12-12 oz. Cans

2 Liter Bottles

Coca Cola Products

\$1.29
ea.

Western Family

Sandwich Bread



99¢
ea.

24 oz.

Eddy's Giant Bread

\$1.69
ea.

Corona Beer



\$12.99
ea.

12 Pack Bottles

12 Pack Bottles

Budweiser Reg/Light/Ice

\$8.99
ea.

Dasani Water
24 Pack
.5 Liter Bottles

\$4.99
ea.

Doritos
Asst'd Varieties
13 oz. Bags

\$1.99
ea.

McCormick Burrito,
Fajita, Enchilada
Foil Pouch Mix

2 \$1

Darigold
Sour Cream
16 oz.

\$1.19
ea.

El Pato Hot & Jalapeno
Tomato Sauces
7.75 oz. Cans

2 for 88¢

Pace Picante &
Salsa
16 oz. Jars

2 \$3

Old El Paso
Taco Shells
12 ct. Box

88¢
ea.

Darigold
Fruit Drinks
1 Gallon

\$1.19
ea.

Western Family
Refried Beans
16 oz. Can

3 for 99¢

Kelloggs
Pop Tarts
Asst'd 22 oz. Box

4 \$10

Post Cereal
12-20 oz. Box

4 \$10

StarKist Tuna
6 oz. Cans

55¢
ea.

Keebler Cookies
Asst'd Varieties
11.5-18 oz.

\$2.69
ea.

Michelin's
Frozen Entrees
Asst'd 8 oz.

5 \$4

Western Family
Canned Tomatoes
Asst'd 14.5 oz. Can

2 \$1

Western Family
Diced Green Chiles
4 oz. Can

59¢
ea.

SRM COUPON

**Nabisco
Oreo Cookies**

2 \$6
for

LIMIT SIX PER COUPON • PER VISIT

SRM COUPON

**Idaho Russett
Potatoes**

49¢ ea. **5 lb. bag**

LIMIT FIVE PER COUPON • PER VISIT

SRM COUPON

**Hanging
Flower Basket**

\$1 OFF

*Kids enter your
moms in the
Mothers Day
contest.
Details at Store.*

HOURS: Mon. - Sat. 6:00 a.m. to 10:00 p.m. - Sunday 7:00 a.m. to 9:00 p.m.

Marsing, Idaho

WE RESERVE THE RIGHT TO LIMIT QUANTITIES AND CORRECT PRINTED ERRORS • PRICES EFFECTIVE 4/28/04 thru 5/4/04