

The Owyhee Avalanche

VOLUME 19, NUMBER 28

HOMEDALE, OWYHEE COUNTY, IDAHO

SEVENTY-FIVE CENTS

Marsing Clean-up Days set for Friday, Saturday

page 4

Jordan Valley adds tanker to fire fleet

page 7

New store opens

page 9



13 arrested, 1 cited in Tuesday's drug bust

*Seven agencies
consisting of 73
officers hit 5 homes
simultaneously*

Seven law enforcement agencies and nearly 75 officers gathered in a location near Homedale Tuesday morning, July 1, to coordinate what is being called Owyhee County's largest drug bust in history. Joining the Owyhee County Sheriff's Department and posse were Homedale Police Department, Canyon County Sheriff's Department, Caldwell and Nampa SWAT teams, Idaho State Police, DEA, and INS. The Bureau of Land Management donated the use of hand held radios for each of the officers.

Five search warrants and 18 grand jury indictments netted

13 arrests and one misdemeanor citation to a juvenile for possession, in a continued effort to take a "bite out of

crime" by the Owyhee County Sheriff's Office.

Rebecca Frazier, 21 of Marsing, Rudy Garcia, 55 of

Homedale, Gilberto Mascaro, 42 of Marsing, Sherre Carr, 29 of Marsing, Raul Gonzalez, 40 of Homedale, Bryan Day, 47

of Homedale, Donna Kobow, 43 of Homedale. Deborah Grammer, 34 of Homedale, Javier Gonzalez, 39 of Homedale, Jerry Hance, 19 of Marsing, Lori Moe, 43 of Marsing, Donald Stockdale, 40 of Marsing and Joann Faye Redburn, 43 of Homedale were arrested on several drug charges.

Three homes were raided in Homedale, one in Marsing and one in the county nearly simultaneously at approximately 6 a.m. Tuesday morning in which officers seized homes, vehicles, cash, weapons, drugs and drug paraphernalia. An additional home was searched after the owner gave his consent to search when officers arrived with a warrant for his arrest in Marsing.

— to page 2



Search warrant entry

A SWAT team breaks open the door of a house on 2nd Avenue West in Marsing Tuesday during an early morning drug raid which included five homes in Marsing, Homedale and in the county. Fourteen people were arrested on grand jury indictments on several drug charges.

Homedale drinking water passes contaminants tests

The annual quality water reports are in at Homedale City Hall and City Engineer Bob Walker said the city has again passed the federal and state requirements for drinking water in the city. A copy of the Consumer Confidence Report may be obtained from city hall.

"Our goal at the City of Homedale is to provide you with water that meets or surpasses all the standards for safe drinking water," Walker said. "These health and safety standards are set by the United States Environmental Protection Agency

(EPA) and the Idaho Department of Environmental Quality (IDEQ).

"To ensure the safety of your water, we monitor before, during and after the treatment process. All of our sources and supply are monitored and tested every year. We also sample and test water directly from the distribution system on a regular basis. We're proud to let you know that your water met all safety standards in 2002. Test results are on file for your review with the City of Homedale and IDEQ, the agency that monitors and regulates drinking

water quality in our state.

"This Water Quality Report provides important information about your drinking water. Both the EPA and the IDEQ require water suppliers to mail a Water Quality Report (Consumer Confidence Report) to customers on an annual basis. It shows how your drinking water measured up to government standards during 2002."

Nearly 80 contaminants are tested for including Microbiological, Inorganic, Synthetic Organic,

— to page 4



Shawn Gibbs helps Jake Ferguson add the American Flag to his car, minutes before the introduction of cars. Photo by Gregg Garrett.

Emmett man wins 2003 annual derby

Imperials finish in top three spots

An Emmett man took first place in the final heat of last weekend's 21st annual Lion's Club Demolition Derby on Friday night after winning first place in the first heat. Three Chrysler Imperials took to top three spots in the competition; a car drivers say can not be stopped.

Leonard "Dead Shot" Hurd drove car 61, a 1966 Imperial with a 440

engine in his fourth derby. He said he found the car "along the Boise River."

Hurd was pitted against Bryan "Basquo Fiasco" Badiola and Troy "Tall Boy" Tiddens in the final heat in which Badiola finished in second and Tiddens placed in third. Badiola drove a 1973 Imperial with a 400 engine and Tiddens drove a 1966 Imperial with a 440 engine. Tiddens said his car was used by "Evil Kneivel to hurdle the Tango in 1969." The race was Badiola's third and Tiddens' fourth.

Tiddens also received a trophy for

the most aggressive driver along with Jake Volk of Homedale and he was given the award for best looking car voted on by the crowd. John Henry received the Lion's choice of best looking car. Antone Badiola won the hardest hit award.

Duane "Igor" Eoff took home \$800 for winning the consolation round in which 18 drivers entered. Eoff's 1970 Plymouth Fury was the final car running.

Eoff was pitted against Cody Garrett,

— to page 10

From page 1

✓ Drug bust

Law enforcement seized approximately two pounds of marijuana and nearly two ounces of methamphetamine. A home on Selway in Homedale was raided along with a home on Oregon and Washington Avenues near the Homedale Elementary School. Those arrested at the homes near the school were charged with conspiracy to deliver and delivery of a controlled substance within 1,000 feet of the school and could receive a much stiffer sentence.

In Marsing, officers raided a home on 13th Avenue West and on Pascoe Road in the

"If your gonna do drugs, were gonna getcha."

— Sheriff Gary Aman

county. A home on 2nd Avenue West was also searched when the owner gave permission to officers to search.

Sheriff Gary Aman said he was "extremely pleased" with the outcome of the raid. He said nearly \$3,300 in cash was seized as well as the drugs and additional drug-related items. He said the county might also seize several homes.

"With the items that we seize, we can add it to our resources to continue to make drug raids in the county," Aman explained. "We are not stopping here. We have a very serious drug problem in the county. We found that nearly every one of our arrests were in connection with drugs. The burglaries, petit thefts, assaults, nearly every one of them were in connection with drugs."

In May, law enforcement agencies gathered to raid a house on Main Street in Marsing. Two adults were arrested and are still being held in the county jail on drug charges. In Dec. 2002, Aman and several other law enforcement agencies gathered to raid

a home only two houses from a home raided Tuesday morning.

Approximately 16 people were eventually arrested in connection with the December

raid which is being handled by the U.S. Attorney's office and most have been convicted. Heather Redburn, daughter of Joann Redburn was also arrested in that raid. Hundreds of

grams of methamphetamine and several firearms were confiscated in the raid and subsequent investigation, according to a federal indictment.

"I would really like to thank

our investigator Jim Bish and Jim Christensen from Idaho State Police for their long hours and hard work on the case," Aman said. "The raid was accomplished due to the officers, agencies and volunteers involved. We even had the wife of one of our posse members bring out sandwiches for us. It all came together perfectly.

"If your gonna do drugs, were gonna getcha." Aman added. -CB



Owyhee County Sergeant Jim Bish and an officer from Idaho State Police arrest Lori Moe, 43, and Donald Stockdale, 40, both from Marsing during a drug raid early Tuesday morning.



Marijuana, pipes, scales, and a variety of drug related paraphernalia were laid out for documenting at the sheriff's office after a five-home drug raid netted 14 arrests on 18 grand jury indictments. The items in the picture were taken from only one of the homes searched.



Special deputy Bruce Cameron searches the bedroom of a house on Washington Avenue in Homedale Tuesday morning.

Arrests and charges in Tuesday's drug raid:

Rebecca Frazier, 21 from Marsing. Charged with delivery of a controlled substance and conspiracy to deliver a controlled substance. Arrested on a grand jury indictment. Bond set at \$30,000.

Gilberto Mascaro, 42 of Marsing. Charged with delivery of a controlled substance and conspiracy to deliver a controlled substance. Arrested on a grand jury indictment. Bond set at \$30,000.

Rudy Garcia, 55 of Homedale. Charged with delivery of a controlled substance within 1,000 feet of a school and conspiracy to deliver a controlled substance within 1,000 feet of a school. Arrested on a grand jury indictment. Bond set at \$100,000.

Sherre Carr, 29 of Marsing. Charged with delivery of a controlled substance. Arrested on a grand jury indictment. Bond set at \$30,000.

Raul Gonzalez, 40 of Homedale. Charged with delivery of a controlled substance and conspiracy to deliver a controlled substance. Arrested on a grand jury indictment. Bond set at \$100,000.

Bryan Day, 47 of Homedale. Charged with delivery of a controlled substance within 1,000 feet of a school and conspiracy to deliver a controlled substance within 1,000 feet of a school. Arrested on a grand jury indictment. Bond set at \$100,000.

Donna Kobow, 43 of Homedale. Charged with delivery of a controlled substance within 1,000 feet of a school and conspiracy to deliver a controlled substance within 1,000 feet of a school. Arrested on a grand jury indictment. Bond set at \$100,000.

Deborah Grammer, 34 of Homedale. Charged with

delivery of a controlled substance within 1,000 feet of a school and conspiracy to deliver a controlled substance within 1,000 feet of a school. Arrested on a grand jury indictment. Bond set at \$100,000.

Javier Gonzalez, 39 of Homedale. Charged with delivery of a controlled substance within 1,000 feet of a school and conspiracy to deliver a controlled substance within 1,000 feet of a school. Arrested on a grand jury indictment. Bond set at \$100,000.

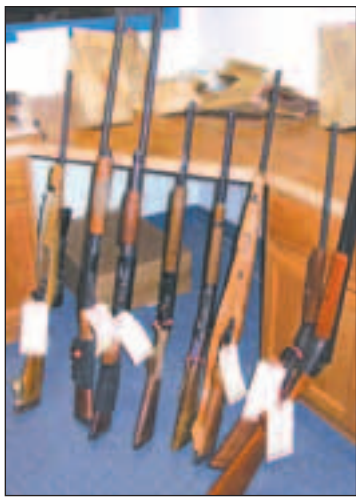
Jerry Hance, 19 of Marsing. Charged with conspiracy to deliver a controlled substance. Arrested on a grand jury indictment. Arrested on a grand jury indictment. Bond set at \$30,000.

Lori Moe, 43 of Marsing. Charged with conspiracy to deliver a controlled substance. Arrested on a grand jury indictment. Arrested on a grand

jury indictment. Bond set at \$100,000. Moe was also charged with a second count of conspiracy to deliver a controlled substance and her bond for that charge was set at \$30,000.

Donald Stockdale, 40 of Marsing. Charged with conspiracy to deliver a controlled substance. Arrested on a grand jury indictment. Bond set at \$100,000. Stockdale was also arrested on a second count of conspiracy to deliver a controlled substance and delivery of a controlled substance. His bond on those counts was set at \$30,000.

Joann Faye Redburn, 43 of Homedale. Charged with delivery of a controlled substance within 1,000 feet of a school and conspiracy to deliver a controlled substance within 1,000 feet of a school. Arrested on a grand jury indictment. Bond set at \$50,000.



Several shotguns, rifles, and other weapons were seized during the early morning drug raid Tuesday. Several vehicles were also seized and impounded.

Seven-year-old wins Doodle-bug race

A seven year old Marsing girl is \$500 richer this week after her “doodle-bug” crossed the finish line first during the annual Marsing Chamber of Commerce’s doodle-bug race

last Thursday night.

Kimber Bowman, daughter of Tammy and Lynn Bowman of Marsing was the first place winner followed by Leona Prall in second place and Essence of

Life were the third place winners.

Chamber president Bill O'Conner said the grand prize money was donated by the chamber and the second place winnings of \$250 was donated by the Lion's Club. One hundred dollars was donated for the third place winner by the City of Marsing.

The Lion's Club held a barbecue dinner before the race and several hundred people enjoyed barbecued beef, salads, and desserts. A fireworks show was put on by the Marsing Volunteer Firemen at dark and people filled Island Park for the evening.

O’Conner said people were in the fields across the river and lined up along the road for the show. He said although the sales of the doodle-bug tickets was not what the chamber had hoped for, he said next year the chamber would look at was to sell the tickets more aggressively or hold additional fundraisers for the fireworks display.



Bob Malmberg of Marsing pulls a rack of barbecue beef from a grill to be served during last week's 4th of July dinner hosted by the Lion's Club.



Marsing Chamber Vice President Carol Edwards grabs “doodle-bugs” during last week’s annual doodle-bug race at the city park. Kimber Bowman, 7, from Marsing was the grand prize winner of \$500.

**For the Best Service,
Selection and Value,
Go to THE SOURCE . . . BRANDSOURCE**

\$25-\$100

Whirlpool & BrandSource Cash Card
by mail with the purchase of select Whirlpool Brand Appliances.
Valid on purchases made June 21 - July 10, 2003.

<p>LSQ9659L</p> <p>\$449</p> <p>Whirlpool® Super Capacity Plus Washer</p> <ul style="list-style-type: none"> • Xtra Roll Action™ Plus agitator cleans twice the average load* • AccuWash™ Temperature Control optimizes detergent performance • Cycles include handwash/wool, soak and prewash <p><small>* Average load equals 7 lbs.</small></p>	<p>LEO9858L</p> <p>\$429</p> <p>Whirlpool® Super Capacity Plus Dryer</p> <ul style="list-style-type: none"> • Xtra Roll Action™ Plus agitator cleans twice the average load* • AccuDry™ sensor monitors moisture to help prevent over-drying • 9 cycles, 5 temperatures let you control the drying process • 90-minute Wrinkle Shield™ Plus System minimizes ironing 	<p>GSQ9669L</p> <p>\$499</p> <p>Whirlpool Gold® Super Capacity Plus Washer</p> <ul style="list-style-type: none"> • Xtra Roll Action™ Plus agitator cleans twice the average load* • AccuWash™ Temperature Control optimizes detergent performance • Unique Stepped Spin™ technology reduces wrinkles <p><small>* Average load equals 7 lbs.</small></p>	<p>GEQ9800L</p> <p>\$479</p> <p>Whirlpool Gold® Ultra Capacity Dryer</p> <ul style="list-style-type: none"> • Xtra Roll Action™ Plus agitator cleans twice the average load* • AccuDry™ sensor monitors moisture to help prevent over-drying • 9 cycles, 5 temperatures let you control the drying process • 4-way venting for flexible installation 	<p>DU943PWK</p> <p>\$419</p> <p>Whirlpool® Power Clean™ Dishwasher</p> <ul style="list-style-type: none"> • Towerless Hi-Temp scour provides 100% lower rack capacity to clean more dishes • AnyWare™ silverware basket • Convenient 2-4-6-hour delay wash
---	---	--	---	--

<p>GU1500XTL</p> <p>\$589</p> <p>Whirlpool® Tall Tub Dishwasher</p> <ul style="list-style-type: none"> • Exclusive Soak & Scour option means less soaking • 2-position adjustable rack for tall items • NSF-certified anti-bacterial cycle 	<p>GR440LXL</p> <p>\$849</p> <p>Whirlpool Gold® Super Capacity Range</p> <ul style="list-style-type: none"> • No other brand of oven provides more uniform baking temperatures* • AccuSimmer® element prevents scorching • Split oven rack handles an entire meal at once <p><small>* Based on a comparison of leading brands using a 60-minute bake time</small></p>	<p>GS475LEL</p> <p>\$1099</p> <p>Whirlpool Gold® Super Capacity Range</p> <ul style="list-style-type: none"> • No one provides a more uniform baking temperature than the AccuBake® System* • Delay Bake and Oven Hold Warm • Fast-heating Power™ burner and precise AccuSimmer® burner • 2 full/1 split oven racks and warming drawer <p><small>* Based on a comparison of leading brands using a 60-minute bake time</small></p>	<p>GD5SHGXL</p> <p>\$1329</p> <p>Whirlpool Gold® Side-by-Side Refrigerator 25.4 cu. ft.</p> <ul style="list-style-type: none"> • UltraEase™ Plus system dispenses filtered water and cubed/crushed ice • Slide-out SpillGuard™ glass shelves contain spills • IceMaggi® Plus makes enough ice for even the largest party 	<p>ET1FTKXK</p> <p>\$799</p> <p>Whirlpool® Top-Freezer Refrigerator 20.8 cu. ft.</p> <ul style="list-style-type: none"> • Adjustable, easy-to-clean SpillGuard™ glass shelves • Dual up-front temperature controls • Movable gallon door bins hold large items
--	---	---	--	--



Expand Space

Cool and convenient. The Conquest® Refrigerator provides more space where you need it...in the freezer. Space-saving In-Door-Ice® ice dispensing system provides up to 19% more usable freezer capacity*.

* Compared to standard Whirlpool built-in 21 cu. ft. model



In-Door-Ice®
Ice Dispensing System

Up to 19% more
space in the freezer*
with In-Door-Ice® ice
dispensing system



ENERGY STAR

\$1809

Conquest®

CGSHX46

Whirlpool® Conquest® Refrigerator 25 cu. ft.

- UltraEaze™ Plus system dispenses filtered water and crushed/cubed ice
- Stylish contoured doors

*Mail-In Offer only. See store for a complete list of qualifying models and details. Some models featured in this ad may not qualify for the promotional offer. BrandMaster® is a registered trademark of Associated Home Buyers, Inc. ®™ WHIRLPOOL and all other trademarks are owned by Whirlpool, U.S.A. ©2000 Whirlpool Corporation. All rights reserved. Sold where prohibited by law. Each access is available at all MasterCard® and/or Visa® stores. This offer is issued by Citicorp, Inc. and expires 120 days after issuance. For further information on Whirlpool® Home Appliances, visit www.whirlpool.com or call 1-800-251-1305.

From page 1

✓ Water

which includes pesticides and herbicides, and Volatile organic contaminants.

Those interested my review the report at Homedale City Hall or call Walker with any questions at 337-4641.

“If you want to learn more, people may attend any of our regularly scheduled City Council meetings which are held at 7:00 P.M. on the second Wednesday and the fourth Thursday of every month,” Walker said.

The source of the City of Homedale’s drinking water is wells that tap underground wateraquifers. As water travels through these underground water aquifers, it dissolves naturally occurring minerals, and, in some cases, radioactive material, and/or substances resulting from the presence of animals or human activity. Contaminants that may be present in source water includes:

Microbial contaminants,

such as viruses and bacteria, which may come from sewage treatment plants, septic systems, agricultural livestock operation, and wildlife.

Inorganic contaminants, such as salts and metals, which can be naturally occurring or result from urban stormwater runoff, industrial or domestic wastewater discharges, oil and gas production, mining or farming.

Pesticides and herbicides, which may come from a variety of sources such as agriculture, urban stormwater runoff, and residential uses.

Organic chemical contaminants, including synthetic and volatile organic chemicals, which are byproducts of industrial processes and petroleum production, and can also come from gas stations, urban stormwater runoff, and septic systems.

Radioactive contaminants, which can be naturally occurring or be the result of oil and gas production and mining activities.

Several changes for the enhancement of the quality and quantity of water supplied to the City of Homedale Water System were enabled last year.

Walker said a new well source was completed in Canyon County and connected to the City distribution system in June of 2002. The well, referred to as the Ustick Well No. 6, has both an improved quality and better supply capability (1,000 gallons per minute) than any of the previous City well sources. We

were able to eliminate most of the quality problems such as hydrogen sulfide, ammonia, iron and manganese that were prevalent in the previous low production City wells. The Ustick Well was equipped with a pump capable of producing 450 gallons per minute and has enough reserve capacity to meet the need of the citizens of Homedale for many years to come.

“Due to the addition of the Ustick Well, the old City Hall wells have been turned off and will be abandoned during 2003. The other three remaining previous well sources have been placed in a standby mode and will only be utilized in an emergency. This has definitely improved the quality of water being supplied to the citizens of Homedale.

“The city began engineering design to replace the old Water System reservoir with a new 400,000-gallon reservoir which will enhance system pressures and improve fire protection to the residents of Homedale. This project will be completed in 2003. In addition, many of the old smaller diameter ductile iron distribution mains within the City of Homedale will be replaced during 2003 which will have a positive effect on water quality and fire protection capability.”

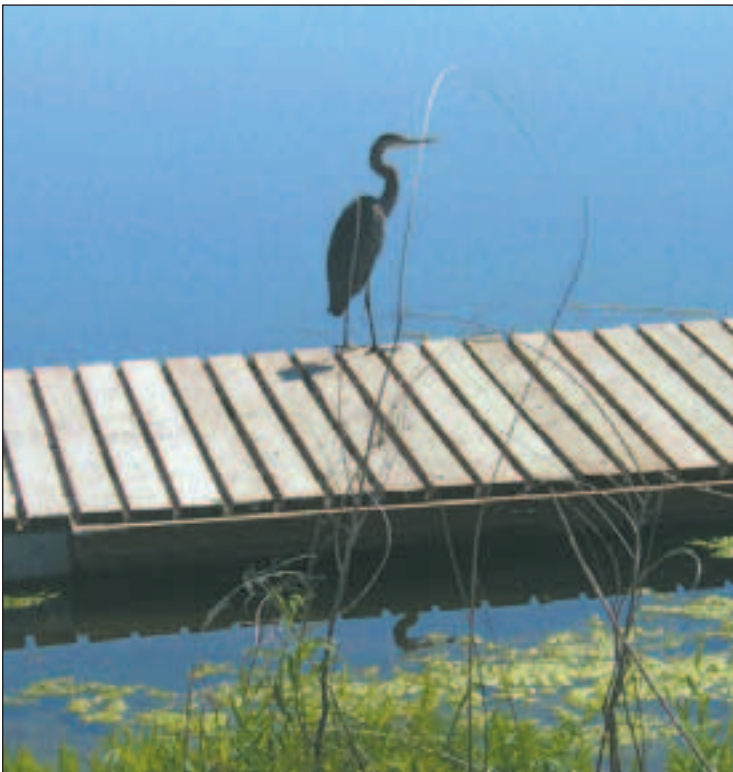
Marsing Clean-up Days set for Friday, Saturday

The annual City of Marsing Clean-up Day will be held on July 11 and 12 with several activities planned.

City employees and volunteers will be available to pick up lumber, leaves, branches, couches, chairs, metal and non-hazardous materials.

The event is sponsored by the city and a spokesman said they would like to have residents call City Hall to schedule pick-ups. Volunteers will not be able to remove batteries, refrigerators, air conditioners, tires, car parts, hazardous materials, household garbage, oil, or paint.

For more information or to schedule a pick-up contact City Hall at 896-4122.



Beat the heat

A heron seems to be considering a swim off of a dock at the Marsing Island Park. Temperatures in the area are expected to remain in the upper 90s throughout the week with no precipitation expected.

Have
a news tip?

Call us!
337-4681

Senior news

Homedale Senior Center

July 10: Spaghetti, green beans, salad bar, Italian rolls, jello/fruit.

July 11: Shopping at Karcher Mall 9AM. Bacon and eggs, hashbrowns, hotcakes, toast.

July 13: Bingo 1PM

July 16: Boise Rose Garden Museum, 3-9AM

West Canyon **Mentoring** Project
Serving Caldwell, Homedale, Nampa, Parma




* Share your interests and abilities with a young person in your community *

*** TRANSFORM A LIFE! ***

CALL **461-4098** for more information

The Owyhee Avalanche

P.O. BOX 97 • HOMEDALE, ID 83628
PHONE 208 / 337-4681 • FAX 208 / 337-4867
E-mail avalanche@citlink.net



U.S.P.S. NO. 416-340
Copyright 2003—ISSN #8750-6823

JOE E. AMAN, *editor-in-chief and publisher*
CHERYL BEESON, *reporter*
JENNIFER STUTHEIT, *office*
ROBERT AMAN, *composition*

Published each week in Homedale, Idaho by Owyhee Avalanche, Inc. Entered as Periodical, paid at the Post Office at Homedale, ID under the Act of March 3, 1879. POSTMASTER: send address changes to THE OWYHEE AVALANCHE, P.O. 97, Homedale, ID 83628.

Annual Subscription Rates:

Owyhee County.....	\$31.80
Canyon, Ada, Malheur counties	37.10
Elsewhere.....	40.00

(Price includes sales tax where applicable)

Deadlines

Classifieds Monday noon the week of publication	Display advertising Friday noon the week prior to publication
Legal notices Friday noon the week prior to publication	Inserts Friday noon the week prior to publication

Letters to the editor
Friday noon the week prior to publication
(Limit 300 words.)

New Shipment!

RAILROAD TIES





\$7.99
each

NEW SUMMER HOURS!
Mon-Fri 7am - 5pm
Sat. 8 am - 4pm

Jump Creek Lumber
337-5588 East Pioneer Road, Homedale, Idaho

Continued heat concerns area irrigators

Like most of the northwest, Owyhee County is drying out and forecasters are not predicting any moisture for the area for at least the next 10-20 days. With temperatures rising into the 90s to 100-degree marks, any moisture that is in the ground is quickly evaporating.

South Board of Control Manager Rex Barrie said the Joint Irrigation Committee met on Tuesday, but results of that meeting were not available at press time. Barrie said Monday that the committee would be taking a long hard look at the

irrigation situation.

“Nothing has changed at this point until we meet with the Joint Committee again,” Barrie said. “We are going to take a hard look at it and see if there is any more water up there.”

On July 3, Owyhee Reservoir was at 22 percent of full with 153 CFS at Rome and 148 CFS at the Owyhee River. The reservoir was holding 160,457-acre feet of water on Thursday, but was down to 151,000-acre feet by Monday morning. Monday the inflow at Rome was running at 136

CFS. Barrie said any measurable snow in the mountains is now gone.

“The last allotment was set at 2.2 acre feet and it will remain there until the joint board meeting, if they change it,” Barrie said. “We have pressure from both sides to increase and we have pressure to leave it where it is to make the season go as long as possible. It will be a tough decision that is made by the joint directors and when they make that decision the respective managers on both side will do what they need to.”

A report from the Natural Resources Conservation Service said as of June 26 the snowpack had melted for the

season in the area. Precipitation was essential zero again for the past week, but isolated storms brought precipitation to the southwest.

Based on mountain data from NRCS SNOTEL sites as of Thursday, the Bruneau Basin is recording 82 percent of average total precipitation and the Owyhee Basin recorded 84 percent of total precipitation.

City Council meeting agenda announced

The Homedale City Council will meet this evening (Wednesday) for a regularly schedule meeting at 7 p.m. The meeting will be held in the district courtroom located in City Hall.

This evening’s agenda includes approving the agenda and the minutes of the June 26 meeting.

Old business will include discussions on the courtroom project with councilman Kevin Barlow, a vote on ordinance number 345, Intermountain Gas franchise ordinance, and Jamie Austin status update from Homedale Police Chief Jeff Eidemiller.

City Engineer Bob Walker will update the council on the sewer lagoon chlorninator, Sunset Village meter installation, water storage site, and a review of the city’s consumer confidence report.

Eidemiller will give a police department report followed by Walker’s public works report and a written report review by city clerk Pam Dugger.

The council has scheduled an executive session followed by mayor/council reports. In closing the council will pay bills and discuss any further business.

WE MAKE A GREAT IMPRESSION



You'll be impressed by the quality of our work and our personalized service

We're a multi-faceted print shop providing complete services from graphic design and typesetting through printing and binding, so no part of your job ever leaves our hands.

We offer consistent results at competitive prices.

337-4866

All types of web and commercial printing

Owyhee Publishing

P.O. BOX 217 HOMEDALE, ID 83628

**Better Rate.
Better Bank.
Better Hurry.**

**5.99%
APR***





U.S. Bank Home Equity Loan
Fixed Rate for 20 Years!

A rate this low won't last long!

There's never been a better time to open a U.S. Bank Home Equity Loan. And right now, you can also get an incredible rate of just 5.99% APR. That's not an introductory rate—it's a fixed rate for 20 years!

Use your U.S. Bank Home Equity Loan for debt consolidation, remodeling, that dream vacation...whatever! Plus, the interest you pay may even be tax deductible. And remember, U.S. Bank has financial solutions for absolutely everyone, even if you have less than perfect credit. The U.S. Bank Home Equity Loan. Better rate...better bank...better hurry!

For more information or to apply, stop by any U.S. Bank branch, call 1-888-444-BANK (ext. 4100) or visit usbank.com.



Great time to refinance with no closing costs!

usbank
Five Star Service Guaranteed

usbank.com

*5.99% fixed APR available for terms up to 20 years on home equity loans with a U.S. Bank checking account with ACH and loan-to-value (LTV) of 80% or less. Higher rates apply for higher LTVs. Minimum loan amount or increase of \$10,000 required. Consult your tax advisor regarding deductibility of interest. Installment loan payment example: On a \$10,000, 20 year loan at 5.99% APR, monthly payments would be \$71.59. Rates subject to change. Offer is subject to normal credit qualifications. Some additional restrictions may apply. Not available with other discounts. Home equity loans are offered through U.S. Bank National Association ND. Member FDIC.

City curfew laws

By Mike Spagnola, Homedale City Police

Summer is here and school is out. With daylight saving time, it gets dark around 8:30 to 9 p.m. As the summer gets into full swing, it won't get dark until almost 10 p.m. The City of Homedale as all other cities, has a curfew ordinance.

The Idaho State Criminal and Traffic Law Code also has a section designated for curfew laws. Let's examine the why of curfew. The laws and codes are not intended to spoil young people's fun. They are designed to help keep them safe. I know that we are a small community, but there is still potential for danger for young people, who are out after dark and unsupervised. The size of a town is not a barometer for safety. Children can and have turned up missing in small towns as well as larger cities.

The curfew ordinance in Homedale is as follows: children under 16 years of age must be off the streets from 11 p.m. until 5 a.m. unless the child is accompanied by a parent or guardian, or other adult having custody of the child, such as a family member. If the young person under 16 is on his or her way home from work or coming home from a social activity such as a church meeting or school function, the curfew ordinance will not apply. This does not mean that the young person can loiter or dally in getting home.

Children from 16-17 years old are required to be off the streets between the hours of midnight and 5 a.m. The same rules apply with being with a parent or adult guardian or coming home from work or social function. If your child is late in getting home from whatever reason, don't panic. Call Owyhee County Dispatch at 337-4222 to alert the officer on duty to be on the look out for your young person. Sometimes young folks forget about the time and if that's the case, the officers of Homedale would be happy to return the child home with nothing more than a lecture.

If your child is missing or you suspect that he or she has some other motive for not being home after hours, here are some things to remember that will help law enforcement locate your child: always ask where your child is going and who he/she will be with. Try to have a telephone number where they will be, and if you do not know the people at that number, call them before your child leaves to confirm that is where he/she will be staying.

Have an idea what your child is wearing and if driving, vehicle information such as license plate, make and model. Get to know your child's circle of friends and don't be shy about asking questions. Remember, it only takes a few moments and these few things to remember to help keep your child safe.



Rob McIntyre presents Miner Melodies during OCHS meeting

Rob McIntyre, presently of Athena, Oregon, will be presenting his program on Miner Melodies: Pioneer Music of the Boise Basin and Silver City during a July 18 Owyhee County Historical Society meeting.

The gold rush attracted people to the region from virtually every walk of life. Included in this population were a number of professional musicians who had toured the east coast. Amateur musicians were also participants in the musical culture of the community during the height of the rush, and after the professionals had moved on, the amateurs kept this same culture alive.

McIntyre is a native of southwestern Idaho. After graduating from Northwest Nazarene College in 1987, he spent four years teaching choral and instrumental music in the public schools of Oregon and Idaho. He received his M.A. in music from the University of Idaho in May of 1993 and is currently pursuing postgraduate work at the University of Idaho while teaching in Athena, Or. He has published articles concerning Idaho's pioneer musical heritage in Idaho Yesterdays and Idaho Music Notes.

"How we do appreciate the support of the Idaho Humanities Council and the Boise Cascade Corporation for their support in making this outstanding speaker available," Rosemary Kunkel said.

McIntyre will present his slide show at 7 p.m. at the court house jury room in Murphy. All members and friends are invited. A short business meeting will open the meeting, followed by McIntyre's presentation. Pie and ice cream refreshments will be furnished by the society.

Buy it, sell it,
trade it, rent it...
in the
Classifieds!

FROM THE OLD 40's Photo album



Willis Electric Main and Owyhee, Homedale (presently Tolmie's Appliance & Hardware)

Homedale class of 1968 to hold reunion

The Homedale High School class of 1968 will hold its 25-year class reunion on July 19 and 20 and all alumni of the school are invited to attend.

The festivities will begin on Saturday evening with an outdoor lawn party and dance at 9 p.m. at the covered pavilion at the fairgrounds north of the Homedale Armory. Music will be provided by Freestyle in which alumni graduate Alfred Koenig is a singer. Admission is \$10 and food and drinks will be available.

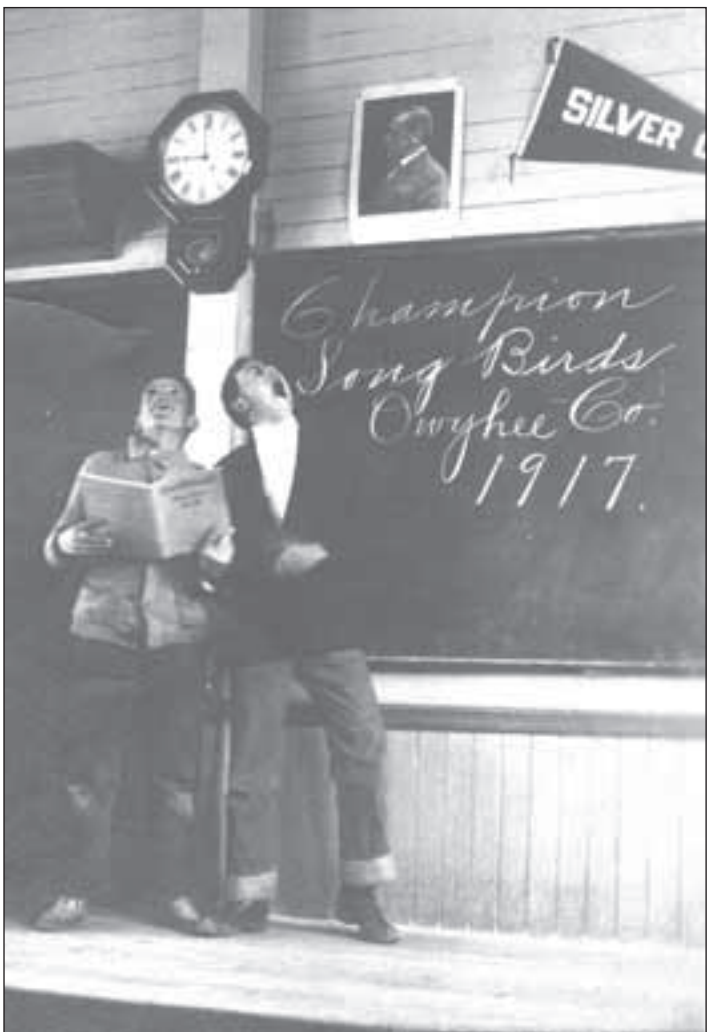
On Sunday a picnic lunch will be served from 1-2:30 p.m. at Riverside Park, followed by volleyball and softball games. The reunion planning committee is challenging picnickers to an entertaining softball tournament. Admission is \$10 for adults and \$5 for kids.

The class of 1968 reunion planning committee is Louis Uranga, Rob Townsend, Donna Batt, Colleen Lowder, Cathy Phelps, Ann Ordorica, and Eloise Van Slyke. For more information contact Lowder at 337-4503.



Walt Smith, broker for
Nova Realty in
Marsing, announces
the appointment of
Charlene Denton
as a full-time real
estate agent.

Charlene is a native of Idaho and has lived in the Caldwell and Marsing area for her entire life. She and her husband, Don, make their home in the Sunny Slope area along the Snake River. She is currently employed with the Marsing School District and past employed with the Vallivue School District with a combined 25 years of service. Charlene brings to Nova Realty dedication and commitment to serving the public. Whether you are in the market to buy or sell, please give Charlene a call at 896-4195 or 573-5298. She will be glad to help you.



Champions, Owyhee County Song Birds, Silver City, 1917

We have no further information on this photo. Anyone who can help us out is asked to call Joe at the Avalanche, 337-4681.

Flahiff
Funeral Chapels, Inc.
& Crematory

Back Row: Kenneth Gordy, Jim McMillan, Dick Whitted, Mahlon Brown, Alfreda Brown
Front Row: Leonard C. Flahiff, Karen Flahiff

"Serving Owyhee & Canyon Counties Since 1952"

**Owyhee & Canyon County's
only locally owned mortuary**

HOMEDALE 27 E. Owyhee 337-3252	CALDWELL 624 Cleveland Blvd. 459-3252
--	---

Jordan Valley adds Homedale's tanker to fire fleet

Jordan Valley Fire added another fire truck to its recently formed department last week after they purchased a tanker truck from Homedale Fire Department. Homedale sold the truck to the local department after it recently added a new 2003 tanker truck to its fleet.

Jim Schmidt and Jim Davis traveled to Homedale last week to pick up its "new to you" truck and said the Jordan Valley department now has three fire trucks for its department. Jordan Valley, up until recently, only had fire coverage from a fire truck stationed in the city, but nearly a year ago members of the community pulled together to form a membership fire department.

Homedale purchased its new tanker truck from a present levy and had no need for the 1983 tanker truck built by Owyhee Motor Sales of Homedale. But fire officials from Jordan Valley said the addition would be a great help to them.

Homedale purchased a 2003

Kenworth diesel automatic with a 3,000-gallon water tank and took possession of it earlier this month. The older truck holds 2,700 gallons of water and was sold to the Jordan Valley department for under \$5,000. Homedale's new truck pumps approximately 500 gallons of water a minute and the old truck is estimated to pump approximately 200 gallons a minute.

Jordan Valley Fire covers approximately 5,000 square miles and now has three trucks stationed in several locations in the area. The department covers homeowners by membership. To be covered by the Jordan Valley Fire department homeowners pay \$100 per house per year. Schmidt said the coverage also includes out buildings and property.

Mike Quintero has been named the fire chief and five board members now make the department's decisions.

Schmidt said the truck was purchased with money from a grant the department was awarded. He said the depart-

ment hopes to station a truck in Rome, Jordan Valley, Pleas-

ant Valley and Arock. He said the department is currently

working to acquire another truck later this year.



New equipment

Homedale Fire District Board member Wendell Hyer gives the keys and title of a 1983 fire truck to Jim Schmidt of the Jordan Valley fire department as Schmidt gives Hyer a check for the purchase. Pictured are from L to R; Ray Maxwell, Trent Price, Fred DeGeuss, Rick Uria, Wendell Hyer, Jim Schmidt and Jim Davis.

MRW Fire Dist. receives BLM fire engine

Thursday afternoon, representatives from the Lower Snake River District Bureau of Land Management handed Owyhee County Commissioner Hal Tolmie the keys to a wildland fire engine, which was sold to the Murphy-Reynolds Wilson Fire District in Murphy.

Shawn Sanders from U.S. Senator Larry Craig's office, Jake Ball from Senator Mike Crapo's office and Josh Tewalt from Congressman Butch Otter's office, Tolmie, Dave McClintock, Yellowpine Fire Chief and Kenneth Good, MRW Fire Chief were on hand for the official release of two fire trucks purchased through the Rural Fire Assistance Program, an element of the National Fire Plan. Both departments received \$20,000

in equipment dollars, enough to purchase BLM surplus wildland fire engines.

A representative from the BLM said the 1990 and 1991 International wildland fire engines would enhance the wildfire response capabilities in both the Yellowpine and Murphy-Reynolds-Wilson areas. BLM will provide both departments with the necessary training to ensure safe, efficient and effective fire suppression operations.

The Rural Fire Assistance Program is one element of the National Fire Plan. It is designed to provide funding to small community and rural fire departments that will enhance these departments's ability to effectively respond to wildland fires, particularly in wildland-

urban interface areas within their jurisdiction.

Departments participating in this program must meet a set of criteria including the following: they must have an assistance agreement in place with the BLM or IDL, they must operate in a jurisdiction serving a population base of no more than 10,000, they can only apply for up to \$20,000 per year and the funding must be used for training, equipment, and/or prevention and education activities.

The spokesman said that the training, equipment, and public education provided by the program not only creates and strengthens partnerships between the small fire departments and the BLM, but it enhances safety and improves the protection of life,

property, and natural resources. The trucks are this year's final two surplus wildland

engines to be acquired by local or community fire departments.

CHIROPRACTIC CORNER

Chiropractic and Sports Injuries

A common question in our office is "Do you only treat injuries to the spine (neck & back) or can you treat other joints that are injured"? Chiropractic has traditionally treated the vertebra of the spine and the related muscles. In our office we also enjoy treating what is termed "the extremities". An extremity is defined in chiropractic terms as a non-spinal area of the body.

In May of 2000 I had the privilege of attending a seven-seminar series given by Dr. Kevin Heron, a nationally renowned lecturer on extremities. The course covered evaluation, diagnosis, adjustment, stabilization and rehabilitation of extremity injuries. The areas of the body included were ribs, jaw, shoulder, elbow, wrist, hand, hip, knee, ankle and foot.

An extensive amount of time was also given to the analysis of foot and gait problems and the construction of custom foot orthotics. These orthotics not only help with painful foot conditions but can also help knee, hip and back problems. Quite a long answer to what seemed to be an easy question. The short answer is "Yes, we treat almost every joint in the Body". And we really enjoy treating extremity joint and muscle problems.

A reminder to students and parents. We are quickly approaching football and volleyball season and we just wanted to let you know that we are doing sports physicals in our office. We evaluate not only sports physicals, but all sports injuries. The charge for a sports physical is \$20.00. If you would like to schedule an appointment with Dr. Perkins at Homedale Chiropractic Center, or if you have any question, please call our office at (208) 337-4900.

Homedale Chiropractic Center
(208) 337-4900

Rubber Stamps

Made to order

The Owyhee Avalanche

337-4681

NOW OPEN!

**FULL LINE OF LIVESTOCK & PET
FEED & SUPPLIES**

**HAY • STRAW • PANELS & GATES
FENCING MATERIALS • VET SUPPLIES
TRAILERS • TACK & SADDLES
PORTABLE BUILDINGS
FEEDERS & more!**

Stop by & visit our new store!

RAFTER 4 FEED CO.

26743 Homedale Road • Homedale
337-5529 • rafter4@frontiernet.net

Watch for our
Grand
Opening!



ASK
BETTY

The inside scoop
on summer sweets

Dear Betty,
There are so many different ice creams to choose from!
What’s the difference between them?
South Lake Tahoe, Calif.

Let’s start with what they have in common, they’re all scrumptious! Where they differ is in their ingredients, fat content and texture. (The fat grams here are based on a one-half cup serving.)

Premium ice cream. Made with cream, sugar and flavorings, premium ice cream contains 18 grams of fat and is very creamy.

Ice cream. Made with the same ingredients as premium, regular ice cream contains more air and fewer grams of fat.

Gelato. Gelato, the Italian word for ice cream, is made with cream, sugar and flavorings. It’s more dense than American ice cream. The fat content ranges from 7 to 12 grams.

Sherbet. Usually made with sweetened fruit juice, water, milk, egg whites and/or gelatin, sherbet weights in with 1.5 fat grams. It’s light than ice cream.

Sorbet. Sorbet is just sweetened fruit juice and water, so it’s fat free and slightly softer than sherbet.

Now that you know the inside scoop on these summertime sweets, share what you’ve learned with a fun and easy ice cream tasting party. Here’s how:

Buy a pint of the same flavor of several frozen desserts: premium ice cream, ice cream, sherbet, sorbet and gelato.

Wrap each container in foil so no one can read the label. Spoon a little of each into small festive paper cups. Let you guests taste their samples, then guess which frozen treat is which. Bring out the fixings for sundaes and let everyone create an ice cream masterpiece.

Dear Betty,
Can I make an ice cream pie at home?
Parker, Ariz.

This refreshing summer treat is as easy to make at home as pie! For a “two-layer” ice cream pie:

The easiest way is to start with a purchased graham cracker or cookie crumb crust, or make your own.

Soften two pints of your favorite ice cream, sherbet or sorbet in the microwave for 15 to 30 seconds.

Spread one pint of ice cream in the crust.

Sprinkle this layer with chopped cookies or candy bars, coconut, chocolate chips, nuts, fresh berries. Cover and freeze for about an hour.

Spread the second pint of ice cream over the filling. Pop in the freezer for at least three hours.

Let stand at room temperature for about 10 minutes before serving. Drizzle with you favorite topping or top with crushed berries.

Betty Crocker
Want more ideas? www.BettyCrocker.com
Questions? 1-888-ASK BETTY

Please enter my subscription to the
Owyhee Avalanche now! Enclosed is \$ _____

NAME _____

ADDRESS _____

CITY _____

STATE _____ ZIP _____

SUBSCRIPTION RATES:

Owyhee County.....	\$31.80
Canyon, Ada and Malheur Counties.....	\$37.10
Elsewhere	\$42.00

Idaho Sales Tax included

The Owyhee Avalanche

P.O. BOX 97 • HOMEDALE , ID 83628



Out with the old, in with the new
Construction workers remove the awning from the Tango Lounge on Idaho Avenue last week. Donna Calzacorta, manager of the lounge said the awning was about 50 years old or more. She said the back part of the building had been built in approximately 1940 or 1950. She said the front part of the building had been built in the very early 1910s. A new awning will be built in the next few months.

DID YOU EVER THINK OF
ADVERTISING AS ...



hiring an employee who could contact more than 7,200 homes and tell them about your merchandise or services?
An employee who could say exactly what you want, and work for what you can afford to pay?

We have.

REACH EVERY HOME IN THIS MARKET

The Owyhee Avalanche

P.O. Box 97

Homedale ID 83628

Rafter 4 farm and ranch store opens near Homedale

A new feed, livestock supply store opened Monday near Homedale and will feature a full line of provisions and supplies for the domestic pet to the large livestock animals.

Sandy McClintic and Pat Battles both of Homedale and formerly from Montana, team together for over 50 years of a n i m a l experience to offer feed and supplies for cattle, horses, dogs, cats, goats, rabbits, wild birds or any other pet or farm animal.

The store, Rafter 4 Feed Company, will carry a full line of hay, straw, livestock panels and gates, fencing materials, vaccines, tack and saddles, portable buildings, feeders and more. The store is located on the corner of Highway 95 and Homedale Road and will be open from Monday through Saturday from 7:30 a.m. until 6 p.m.

A line of saddles, halters, and horse supplies will be offered on the shelves. For feed Battles said he would be able to provide any quantity from one pound to over 5,000 pounds of top grade livestock or pet

food.

He said he has spent the last 35 years in the livestock industry and moved to the Homedale area about 11 years ago. McClintic has been in the are for about a year and said she has grown up in the horse industry.

“Mostly we have a large variety of just about everything the huge livestock companies would need to feed Mrs. Brown across the street with the parakeets would need,” Battles laughed. “We have made a deal with Rangen Feed out of Buhl to supply our feed for us. They

are a nationwide feed company. They will handle anything from game birds and agriculture to aquaculture and wild bird feed.”

“We want to get in and sell them feed,” McClintic said. “We want to carry enough for the big livestock and dairy

producers to the small home pets.”

Raft 4 Feed will also carry a full line of pharmaceutical items for large livestock to small house pets. Battles said they would not offer vet service, but they can help with the everyday shots and medical needs.



Domestic and livestock supplies

Sandy McClintic and Pat Battles stand in their new store among a large line of pet and livestock medication and vaccines. The store opened Monday and the couple is planning a grand opening soon.

Below:

Saddle up

Pat Battles, co-owner of Raft 4 Feed Company in Homedale, stands among a line of saddles that will be offered in his new feed and supply store.

Three Creek news items

Lola Blossom

Seven carloads of folks from the Owyhee County Historical Society came to Three Creek June 21st. They met with Chet and Kim Brackett and Mearl Row and Bob Ramsey among others. Later they went to Bert and Paula Brackett where they learned of their activities.

A potluck super was held at the school. Jessica and Amanda Elsner done some hoe down fiddling for them.

Next day they visited Rolly Patrick at his ranch and then on to the ranch of Maurice and Marlene Guerry on Little House Creek where the history

of the ranches were recalled.

Earl and Mary Grace Elsner who spearheaded the adventures were please that it turned out so well.

Three Creeks newest addition Zane Bert Brackett got in a hurry to be born so made his appearance 2 miles east of the Salmon Dam on June 16, 2003. His mom and dad, Kim and Ira Norris Brackett, sent out cute announcements that they had picked him up by the side of the road. He weighed 6 lbs. 3 oz. and was 20 inches long. His proud brother Cade thinks maybe he will let him stay around. Kim’s mother, Carolyn Burton from

Evanston, Wyoming has been helping out.

Our former long time neighboring ranchers, Bill and Sue Clark are moving from Jerome to Boise to be near three of their children.

David Long of Murphy’s Hot Springs has went to Wisconsin to attend the funeral of a relative.

Earnie Ashford who hauled many truckloads of hay for us passed away at Magic Valley Regional Medical Center in Twin Falls recently. On Saturday June 21 his family and friends took his ashes to Wilkin’s Island and scattered them in the country he loved.



●

Subscribe today!

Have the Owyhee Avalanche delivered to your home each week!

337-4681

●

KEEP YOUR COOL!

Don't spend summer trying to escape the heat in front of a fan. Install a high-efficiency Bryant air conditioning system in your home or office. Air conditioned comfort at comfortable rates.

CALL BAUER

BAUER HEATING & COOLING

Residential Commercial

Jerry Perkins Homedale • 337-5812

573-1788 • 337-3674

Ben & Lori Badiola / Owners

bryant Heating & Cooling Systems Since 1904

24 Hour Emergency Service

MasterCard VISA

A SCUBA ADVENTURE!

at Mount Calvary Lutheran Church

corner of 7th & Idaho, Homedale

We're Bubbling With Excitement for a Cool Under Sea Bible Adventure!

July 21-25 • 9 am - Noon

All Ages (4 and above recommended)

Jen Hartnoll - our Scuba Instructor is enrolling Scuba Divers now! Call 337-5837

S.C.U.B.A. - a Super Cool Undersea Bible Adventure is an exciting way for kids to learn about the Bible people who went deeper in their faith: Elijah - Jonah - and stories of Jesus!

Scuba Divers will learn: ★ Catchy Songs ★ Team Work Building ★ Play Games ★ Deep Sea Nibbling ★ Bible Point Crafts to take home and play with all summer!

Family Members Encouraged to come and Dive Deep into God's Love.

Derby provides exciting entertainment



In the consolation heat, Brad Hunt from Homedale runs upon and shoves Homedale's Tyson Stimmel (#30) into Buhl's Doug Hunt (#27). Photo by Gregg Garrett.

From page 1

Matt "Mayhew" Freelove, Darin Hunt, Doug Hunt, Dean Boyd, Tiddens, John Ellis, Tyson Stimmel, Jake Ferguson, Antone Badiola, Mike Teie, Dusten Decanney, Don Young, Travis Parrill, Duane Eoff, Kurt Shanley, Brad Hunt and Bryan Badiola in the consolation round.

Coordinators of the event said this year's derby was a success with a sold-out crowd. Nearly 3,000 fans filled the seats at the Owyhee County Rodeo grounds to watch man and car battle for a chance at the final trophy.

Last year's winner Larry Corta received a Lion's Club jacket and several awards were given to young fans. A dance contest was held during intermission before

The final heat and a tug-of-war contest were held before the consolation round.

Photos by Gregg Garrett and Cheryl Beeson



Fireworks light up the night sky on Friday.



Derby winners

Derby winners were from left to right: John Henry, best car Lion's choice, Antone Badiola, hardest hit, Duane Eoff consolation winner, Leonard Herd, first place, Brian Badiola, second place, Troy Tiddens, third place, best looking car and most aggressive and Jake Volk, most aggressive.



Brad Hunt, car number 20 rams Jake Ferguson in car number 9 in the first heat of the derby.



Jake Volk lines up to enter the arena for the Championship heat. Photo by Gregg Garrett.



Brad Hunt (car on left) is hit by Marsing’s Rob Grimme in one of the first heats. Photo by Gregg Garrett.



Matt “Mayhew” Freelove car number five and Dusten Decaney in car number 8.



Old Glory waves high above the arena.



Derby champion Leonard Hurd slams another derby driver in the first heat.



Homedale’s Troy “Tall Boy” Tiddens gets sandwiched in heat number three.



Matt “Mayhew” Freelove’s vehicle tipped on its side in heat number one.



Derby rookie Ricardo “Rookie Ric” Delgadillo’s car fills with smoke.

Commentary

Summary judgement

Environmentalists and the natural gas crisis

by William Perry Pendley, President
Mountain States Legal Foundation

“In recent months “prices of natural gas have increased sharply”. In mid-June, the price of gas for delivery in July closed at \$6.31 per million Btu. That contract sold for as low as \$2.55 in July 2000 and for \$3.65 a year ago”. The peak price could exceed \$7.50 per million Btu”. There are still numerous unexploited sources of natural gas production in the United States, but their development is hampered by a decades-old struggle to reach consensus on environmental and energy concerns”. This lack of a consistent policy means more debilitating spikes in price.”

This congressional testimony, delivered last month, does not come from someone environmental groups could dismiss quickly as “one of the usual suspects,” that is, someone responsible for exploring for, locating, developing, and delivering energy resources. Instead, it packs a wallop because it comes from Federal Reserve Chairman Alan Greenspan. But what Greenspan said is not “news.”

Three years ago this month, an independent petroleum geologist from Connecticut, for the American Association of Petroleum Geologists, gave similar congressional testimony. He too predicted a natural gas price spike of over \$7.50 per million Btus as a result of which “residential gas consumers can expect a \$200 to \$300 increase in their winter gas-heating bills, which some can ill afford.” He too stated that America “has abundant natural gas resources to fuel the country well into the 21st Century.” He too declared that, despite abundant supplies of clear-burning natural gas, “the public has not had the will to permit access to the huge gas potential of its undeveloped public lands.”

The onshore public land to which the Connecticut geologist referred lies within the Rocky Mountains and contains nearly 140 trillion cubic feet of natural gas. In fact, the United States admits, in a January 2003 report to Congress, that 40 percent of that land is off-limits to gas development. Sixty percent availability might not be bad if development could actually occur there, but the report considered only whether the lands could, theoretically, be leased. Yet, even those lands must pass through the statutory, regulatory, and litigation gauntlet that is federal land use planning and environmental review, which take years to yield a decision, which is, in turn, subjected to years of appeals and litigation.

However, the assault on natural gas development begins in earnest only after a lease is issued. One leader of a major environmental group threatened to sue anyone who “bids on a lease on public land.” No need; the opposition of environmental groups to federal energy development is well known. What is not well known is the impact of these tactics. That may change. Just as the media and the public is aware, with fires in Arizona, Oregon, and California, of the cost of environmental road blocks to forest health, both may learn soon of the cost of similar barriers to gas development.

The ability of environmental groups to thwart gas development is not limited to their appeals and litigation. There are stacks of environmental statutes, regulations, and judicial rulings—most generated through the lobbying and litigating by these groups—that impose severe restrictions on the ability of operators to do their jobs. The chief culprits involve protected species and archeological sites.

One Wyoming operator has fought for two years for a drilling permit on a barren plot in Sweetwater County’s windswept desert. After submitting an \$80,000 study, which yielded a “finding of no significant environmental impact,” the operator was denied its drilling permits because a federal employee had discovered, belatedly, a pile of loose stones, a “cairn.” The employee says the “cairn” is an active religious site that will be disturbed by any drilling visible from the “cairn.”

Maybe Greenspan is right. Maybe there is no consensus regarding the question of the proper balance between cairns in Wyoming and the cost of gas in Wisconsin. Maybe we should wait until winter to ask for an answer.



On the edge of common sense

Baxter Black, DVM

Fall down and be somebody

There he was on the radio again, another backslider who had written a book about his sordid past and was now cashing in on it.

I’ve always felt a little queasy when some infamous star whose life has been a trail of ex-wives, broken homes, maladjusted children and publicly displayed unfaithfulness, steps on to the stage and announces, “I’ve been free of alcohol and drugs for two weeks now!” and the fawning crowd gives the dirt bag a standing ovation.

It is not unusual, making a saint of Ivan the Terrible.

The pocket philosopher Pinto Bennett captured it best when he said, “Fall Down and Be Somebody!” “Are you an athlete who has corked your bat, pumped your steroids, cut your corners, bet against your teammates, drugged your horses and stuffed your sleeve with aces? You can make millions! Just Fall Down and Be Somebody! Can’t write? We’ll do it for you, no one will know. You could have your own sports talk radio show!



Or...

“Didn’t major in P.E., so you went into politics and became the poster child for “Power and Corruption,” a life of junkets, side deals, interns, favors for campaign contributions, till finally your violations of the public trust are exposed for all to see? Don’t worry, Fall Down and Be Somebody! We can turn your shame into dollars! The juicier the dish, the bigger the book advance!”

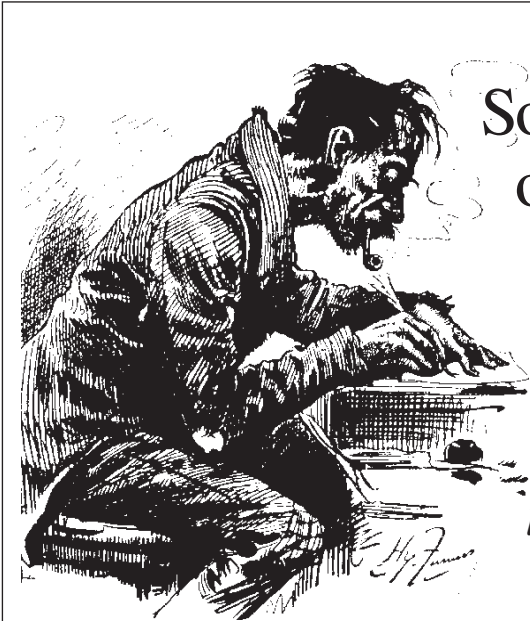
Or...

“Hey lowlife, get caught with your hand in the till? Insider trading, tax evasion, cooking the books, cleaning out your investors, facing indictment? Not to worry! Fall Down and Be Somebody! The sleazier you are the bigger the profits! Remember greed is a marketable asset.”

Or...

“Grow up watching Superman but idolized Jimmy Olsen? Went into TV reporting but couldn’t spell integrity, didn’t know the difference between news and news analysis. Desperate for face time, you began replacing fact with fables, truth with spin, news with illusion, but your enemies slandered you by exposing your shoddy work and deception, and ruined your chance at a Pulitzer? Don’t worry, Fall Down and Be Somebody! Yer a writer, make something up! It’ll sell and you can parlay it into your own cable channel talk show called...Fall Down and Be Somebody!

You’ll never have a shortage of guests.”



Something
on your
mind?

We
welcome
letters to the
editor

The Owyhee Avalanche

P.O. Box 97 • Homedale ID 83628
avalanche@citlink.net

Looking back...

from the files of The Owyhee Avalanche and Owyhee Chronicle

25 years ago

July 6, 1978

More water needed for Homedale

An estimated 25 concerned citizens turned out last Tuesday at Homedale City Hall to discuss, promote, and ask questions about the proposed \$900,000 plus city water supply system.

Boise-based J.U.B. engineers explained the reasons behind initiating the proposal to renovate and compliment the existing system which they termed “inadequate” for Homedale’s current and predicted needs. The engineers assured that normal water use bills would escalate from \$4 to around \$8, or double the norm if the plan was instigated.

Paul Simon, city superintendent, is one proponent of the change in Homedale’s current water system. In the case of a fire in the downtown district Simon estimated “twenty minutes of water at the most,” not nearly enough to properly protect the growing township.

And Simon, who also reigns as fire chief, said rates would surely increase soon anyway, even without a new system of pipes, pumping facilities, and a storage tower. “Rates have been the same for at least 26 years, or as long as I’ve been here,” he said, adding that an addition to the city sewer system over ten years ago was the most recent renovation Homedale has witnessed in its utilities that he could remember.

Emeline Nettleton reigns as Cowbelle Queen

Miss Emeline Nettleton was crowned queen last Saturday at a luncheon at the Knight Congregational Community Church in Grand View of the Cattlemen’s 100 year Centennial Anniversary Celebration.

The theme for the event is “100 Years in the Saddle” and the new reigning queen will be the guest of honor at the celebration July 29 and 30 at Silver City, Idaho.

Miss Nettleton was crowned by the Owyhee County Cowbells who have sponsored the contest. Mrs. Valerie Dines of Marsing was chairman of the event. First runner-up was Margaret Duval who was previously a school teacher at Oreana and is presently living in Boise. Other contestants were: Mildretta Adams, Elizabeth Walker, Evelyn Cummings, Nellie Larson, Phyllis Malmberg and Helen Nettleton.

The new queen was previously from Sinker Creek in Owyhee County and spent better than 50 of her 80 years in Owyhee County. She was born in September 16, 1898, moved to Boise in 1945, and later sold her interest in the ranch to her brother Hubert. In 1948 she moved to Nampa where she is living at the present time. She owns a home located above the Masonic Hall on Jordan Creek in Silver City.

Lions install officers

New club officers were installed at the June meeting of the Marsing Lions Club. Deputy District Governor Don Hatt presided over the installations. Retiring president Julio Churruca handed over the gavel to incoming president Dave VanWassenhove.

Also accepting offices in the club were Bob Malmberg, first vice president, Dave Kuenaman, second vice president, Dennis Neilson, third vice president, secretary, Mike Percifield, treasurer, Jerry Bowman, taittwister, Harold Moeries, assistant taittwister, Mike Van Wassenhove. Directors for a one year term are Harold Floyd and Cecil Bish, directors for two year terms are Bob Larsen and Roman Usabel.

GV school demolition approved

Bruneau. A decision to allow Ray Brodhead of Hayburn to tear down the old high school building in Grand View for what he could salvage from it was the main issue of a recent Bruneau school board meeting, held at 8 pm last Thursday.

50 years ago

July 9, 1953

County Commissioners tie down proposed road funds

At a meeting of the county board of commissioners at Murphy last Monday, the commissioners tied down the funds proposed to be raised by a bond issue in order to assure Owyhee county residents that the Marsing-Indian Cove road would be completed before any funds are committed to any other use.

In calling for the special road bond election, to be held Tuesday, July 28th, the commissioners stated the funds would be used for “construction and repair of roads and bridges within Owyhee County.” Some question has been raised throughout the county whether or not this would leave the gate open for the proposed funds to escape through various “pet” projects and thereby undercut the proposed Marsing-Indian Cove road so that it could not be completed.

The commissioners stated that according to the federal and state matching fund program, the monies from the state and federal sources can be used only on secondary highways approved by the federal bureau of highways and cannot be used for any purpose other than those approved. In Owyhee County there are very few approved secondary roads, the proposed county-long highway being on of them. It is for the construction and surfacing of this 81.2 miles of highway that the bond election has been called.

Homedale merchants plan TV set give-away contest

Homedale merchants today announced a program whereby they will give away five television sets within the next six weeks to lucky customers shopping in Homedale stores. The sets, all 21-inch table models, have been purchased from local TV distributors, including Homedale Tractor and Equipment Company, Homedale TV and Appliance Center, Homedale Supply, Western Auto Supply and Willis Electric.

Homecoming services at Friend Church July 19

A homecoming and special dedication services will be held at the Homedale Friends Community church on Sunday, July 19, to observe the completion of new improvements recently added to the church.

A number of new improvements have been added to the church during recent months including a new west wing which has four new classrooms and can be used for an overflow room.

The building has recently been redecorated and was completed two weeks ago when a new oak floor was laid and new upholstered pews were installed.

Cattlemen’s conv. set for July 25-26

Directors of the Owyhee County Cattlemen’s Assn. will meet at Murphy tomorrow to make final plans for the annual convention to be held at Silver City on Saturday and Sunday, July 25 and 26, according to Kenneth Downing, secretary of the group.

A highlight in the activities of Owyhee County, the convention promises to give a lot of enjoyment to thousands of people who annually trek to the historical landmark for the convention.

Dick Gabica of Marsing is president of the association.

Hotshots defeat Emmett 10 to 1

Homedale Hotshots stood second place with 8 wins and 2 losses in the first half of the Border League schedule by winning over Emmett Friday night at the Emmett field, with a score of 10-1. Payette is holding top place with 10 wins and no losses. Newbill struck out 19, walked 2, and allowed 3 hits.

135 years ago

July 11, 1868

GEOLOGICAL. Mr. John Hunter from Castle Creek has shown us a fragment of oolitic formations, of which there is an abundance in that locality. This oolite is a variety of limestone composed of small round grains, resembling the roe of fishes, and belongs to the Mesozoic age in geology, between the chalk and limes formation. The Mesozoic period in which the oolite limestone is found constitutes the middle ages in geological history and includes what is known as the Reptilian age. On Sinker, Castle and Catharine Creeks fossils of the latter age abound, among which are found a large variety of bones of animals now extinct, and shells of singular beauty. We are of no reason why the oolite of that locality cannot be converted into lime. It would not require a costly experiment to give it a trial, and if successful would subserve a valuable purpose for building.

THE FOURTH IN SILVER CITY passed off very quietly, and as far as we know general jollity prevailed. At sunrise our mountains were made to echo with the firing of salutes, and the noble old star spangled banner was seen on every flagstaff. Mr. J. L. Hall read the Declaration of Independence at two P.M. at the Court House and Mr. Henry Martin delivered a really excellent oration. Large quantities of firecrackers and whisky were consumed during the day, and the sun went down amid the booming of cannon-anvils. A more fitting celebration might have been gotten up for the occasion, but everybody is just as well satisfied now, and had it not been for the strenuous efforts of a very few of our citizens there would have been no celebration at all.

THE FOURTH AT WAGONTOWN. The various livery stables turned out their best rigs on the occasion, and all of our citizens who could procure a buggy or saddle horses gobbled up all the women and girls in town and went down to the picnic and races at Wagontown. The day was fine and all are unanimous is saying they has a splendid time. Tom Walls spared no exertion to make everyone feel at home and comfortable. The only mean trick we heard of on the occasion was that in a certain play, in which nearly all were engaged, several big masculine boobies wouldn’t allow the girls to kiss them. Alas—wonder what young men are going to?

SHOOTING AFFRAY. At Ruby City, between eight and nine o’clock on Monday evening last, a serious, if not fatal shooting afay occurred between Andy Schrader and Jake Wesenfelter. A woman appears to have been the cause of the trouble. Schrader received a blow over the heard with a six-shooter and Westenfelter was shot in the left hip, and in the back, ranging upwards under the shoulder blade. The wounded man is still alive but in a very precarious condition. Schrader delivered himself up and was set at liberty on \$1,000 bonds to appear for examination on Monday next, after which we will give more particulars.

THE IDAHO HOTEL. Public attention is directed to the remodeled advertisement of the Idaho Hotel, which has been thoroughly refitted and large additions made thereto in the way of sleeping apartments, comfortable bath-rooms, &c. This house is not unexcelled by any in the Territory in its accommodations for the comfort and convenience of transient and permanent patrons.

BULLION ASSAY FOR JUNE. The bullion assayed in this place for the month of June amounts to \$147,073.

Public notices

NOTICE OF ANNUAL MEETING OF THE BOARD OF TRUSTEES PLEASANT VALLEY ELEMENTARY SCHOOL DISTRICT No. 364

The annual meeting of the Pleasant Valley Elementary School District No. 364 scheduled for July 14, 2003 at 7:00 p.m. has been cancelled. The annual meeting will be held July 28, 2003, 7:00 p.m. at the Pleasant Valley School.

Rosa Maria Lowry
Clerk

7/9/03

NOTICE OF TRUSTEE’S SALE

On the 22nd day of **October, 2003**, at the hour of **10:45 A.M.**, of said day, (recognized local time), in the **lobby of the Owyhee County Courthouse, Murphy**, in the County of Owyhee, State of Idaho.

First American Title Company of Idaho, Inc., an Idaho Corporation, as successor trustee, will sell at public auction, to the highest bidder, for cash or cashiers check (cash equivalent), in lawful money of the United States, all payable at the time of sale in compliance with Section 45-1506(9) Idaho Code, the following described real property, situated in the County of Owyhee, State of Idaho, and described as follows, to-wit:

SEE ATTACHED EXHIBIT A

The Trustee has no knowledge of a more particular description of the above referenced real property, but for purposes of compliance with Section 60-113 Idaho Code, the Trustee has been informed that according to the County Assessors office, the address of **Route 1, Box 485, Marsing**, Idaho, is sometimes associated with said real property.

Said sale will be made without covenant or warranty regarding title, possession or encumbrances to satisfy the obligations secured by and pursuant to the power of sale conferred in the deed of trust executed by **MATTHEW J WRIGHT AND NICOLE M WRIGHT, husband and wife**, as grantors, to **FIRST AMERICAN TITLE COMPANY OF IDAHO, INC.**, an Idaho Corporation, as successor trustee, for the benefit and security of **WELLS FARGO HOME MORTGAGE, INC.**, as beneficiary, recorded **December 1, 2000**, as Instrument No. **234500**, Mortgage Records of Owyhee County, Idaho.

THE ABOVE GRANTORS ARE NAMED TO COMPLY WITH SECTION 45-1506 (4) (A), IDAHO CODE. NO REPRESENTATION IS MADE THAT THEY ARE, OR ARE NOT, PRESENTLY RESPONSIBLE FOR THIS OBLIGATION.

The default for which this sale is to be made is the failure to pay when due, under Deed of Trust Note, the monthly payments for Principal, Interest and Impounds of \$745.04, due per month for the months of February through May, 2003 and all subsequent payments until the date of sale or reinstatement, with a monthly late charge accruing at \$33.35, with interest accruing at 7.875 percent per annum, and continuing to accrue from January 1, 2003. The principal balance owing as of this date on the obligation secured by said Deed of Trust is \$90,286.11, plus accruing interest, costs and advances. All delinquent amounts are now due, together with accruing late charges and interest, unpaid and accruing

taxes, assessments, trustee’s fees, attorney’s fees, and any amounts advanced to protect the security associated with this foreclosure and that the beneficiary elects to sell or cause the trust property to be sold to satisfy said obligation.

Date: June 18, 2003
FIRST AMERICAN TITLE COMPANY OF IDAHO, INC.
By Monine Cole, Trust Officer
FA-16083/7023.26805
EXHIBIT A
ATTACHED TO Notice of Trustee’s Sale

A portion of the South Half of the Southwest Quarter of the Northeast Quarter of Section 16, Township 2 North, Range 4 West of the Boise Meridian, Owyhee County, Idaho, more particularly described as follows:

COMMENCING at the Southwest corner of the Southwest Quarter of the Northeast Quarter of said Section 16, being the Center

Quarter corner; thence Northerly, along the West line of the Southwest Quarter of the Northeast Quarter of said Section 16, 275 feet to a point; thence

Easterly, parallel to the South line of the Southwest Quarter of the Northeast Quarter of said Section 16, 250 feet to the POINT OF BEGINNING; thence

Continuing easterly, parallel to the South line of the Southwest Quarter of the Northeast Quarter of said Section 16, 210 feet to a point; thence

Northerly, along the line parallel to the West line of the Southwest Quarter of the Northeast Quarter of said Section 16, 210 feet to a point; thence

Westerly, parallel to the South line of the Southwest Quarter of the Northeast Quarter of said Section 16, 210 feet to a point, thence

Southerly along a line parallel to the West line of the Southwest

Quarter of the Northeast Quarter of said Section 16, 210 feet to the REAL POINT OF BEGINNING.

Tina Albright, Trustee
Verification

7/9,16,23,30/03

Have
a news tip?

Call us!

337-4681

**Rubber
Stamps**

Made to order

The
Owyhee
Avalanche

337-4681



**Owyhee Cattlemen’s Association
Heritage Fund
7th ANNUAL
PROPERTY RIGHTS DRAWING**

**2003 DODGE RAM
3/4 ton 4x4 Quadcab Pickup**

From Mountain Home Auto Ranch

Features include Turbo Cummins diesel engine, automatic transmission, SLT package, A/C, cruise control, tilt steering, trailer tow package, power window and locks, AM/FM cassette.



ALL PROCEEDS TO GO TO THE OWYHEE CATTLEMEN’S ASS’N. HERITAGE FUND TO AID IN THE FIGHT TO KEEP ALL OF OUR PROPERTY RIGHTS AND MULTIPLE USE ACCESS TO FEDERAL LANDS IN OWYHEE COUNTY.

TICKETS: \$100 donation each.

**HURRY!
BUY NOW!**

Only 450 tickets will be printed,
so each holder will have a 450-to-1 chance to win!
(That’s better odds than at Reno!)

Drawing will be held at Mountain Home Auto Ranch, Mtn. Home
after tickets are sold or August 31, 2003 -- whichever comes first.
Need not be present to win.

Winner will be responsible for title, license, and registration fees, and all taxes.

TICKETS ARE AVAILABLE FROM:
Paul Nettleton --- 834-2237 Martin Jaca -- 495-1169,
Kenny Tindall -- 845-2838 The Owyhee Avalanche -- 337-4681
or send check payable to Owyhee Cattlemen’s Heritage Fund and a
self-addressed stamped envelope to:
PICKUP RAFFLE, HC 79 BOX 2050, MURPHY. ID 83650

Public notices

NOTICE OF TRUSTEE’S SALE Trustee’s Sale No. 02-MS-31791

Notice is hereby given that, Fidelity National Title Insurance, the duly appointed Successor Trustee, will on October 14, 2003, at the hour of 11:00 AM, of said day, on the steps of the Owyhee County Courthouse, located at the corner of Highway 78 and Hailey Street, Murphy, ID, sell at public auction to the highest bidder, for cash, in lawful money of the United States, all payable at the time of sale, the following described real and personal property (hereafter referred to collectively as the “Property”), situated in the County of Owyhee, State of Idaho, to-wit: EXHIBIT “A” A portion of the Southeast Quarter of the Northeast Quarter of Section 24, Township 3 North, Range 5 West, Boise Meridian, Owyhee County, Idaho, more particularly described as follows: Commencing at the Northeast corner of Southeast Quarter Northeast Quarter (North 1/16 corner) monumented with a rebar, 5/8” diameter, with a plastic cap marked Alpha - LS 832; thence South 0f 18’30” East 206 feet to the Point of Beginning; thence continuing South 0f 18’30” East 360.38 feet; thence North 63f 18’56” West 224.44 feet; thence North 0f 18’30” West 261.02 feet; thence South 89f 35’20” East 20 feet to the Point of Beginning. The Trustee has no knowledge of a more particular description of the above-referenced Property but, for purposes of compliance with Section 60-113 of Idaho Code, the Trustee has been informed that the address of RT 1 Box 158 Market Rd nka 4993 Market Road, Marsing, ID 83639, is sometimes associated with said real property. Said sale will be made without covenant or warranty regarding title, possession or encumbrances to satisfy the obligation secured by and pursuant to the power of sale conferred in the Deed of Trust executed by Kathleen A. Rangel and Arthur Rangel, husband and wife, as Grantor, to Alliance Title-Nampa, as Trustee, for the benefit and security of TMS Mortgage Inc., dba The Money Store, as Beneficiary, dated 3/11/1998, recorded 3/16/1998, under Instrument No. 224289, Mortgage records of Owyhee County, Idaho, the beneficial interest in which is presently held by The Bank of New York- as Trustee under the Pooling and Servicing Agreement dated as of February 28, 1998, Series 1998-A. The above Grantors are named to comply with Section 45-1506(4)(A), Idaho Code. No representation is made that they are, or are not, presently responsible for this obligation. The default for which is sale is made is the failure to pay when due under the Deed of Trust Note dated 3/11/1998, failure to pay the monthly payment which became due on 2/15/2003 and all subsequent monthly payments, plus late charges and other costs and fees as set forth. Amount due as of June 12, 2003 Delinquent Payments from February 15, 2003 2 payments at \$492.57 each \$985.14 2 payments at \$482.74 each \$965.48 (02-15-03 through 06-12-03) Late Charges: \$23.13 Beneficiary Advances: \$250.41 Suspense Credit: \$0.00 Total: \$2,224.16 All delinquencies are now due, together with unpaid and accruing taxes, assessments, trustee’s fees, attorney’s fees, costs and advances made to protect the security associated with this foreclosure. The principal balance is \$40,399.37, together with interest thereon at 11.000% per annum from 1/15/2003 to 4/15/2003, 11.000% per annum from 4/15/2003, until paid. The Beneficiary elects to sell or cause

the trust property to be sold to satisfy said obligation. Dated: June 02, 2003
Fidelity National Title Insurance, Trustee By A Fragassi, AVP c/o Regional Trustee Services Corporation, 720 Seventh Avenue, Suite 100, Seattle, WA 98104 Phone: (206) 340-2550 Sale Information: <http://www.rtrustee.com> ASAP543191

6/25-7/2,9,16/03

NOTICE OF TRUSTEE’S SALE

On the **15th** day of **October, 2003**, at the hour of **10:45 A.M.**, of said day, (recognized local time), in the **lobby of the Owyhee County Courthouse, Murphy**, in the County of Owyhee, State of Idaho.

First American Title Company of Idaho, Inc., an Idaho Corporation, as successor trustee, will sell at public auction, to the highest bidder, for cash or cashiers check (cash equivalent), in lawful money of the United States, all payable at the time of sale in compliance with Section 45-1506(9) Idaho Code, the following described real property, situated in the County of Owyhee, State of Idaho, and described as follows, to-wit:

Lot 13, Block 35, AMENDED TOWNSITE PLAT OF HOMEDALE, Owyhee County, Idaho, according to the official plat thereof on file and of record in the office of the Recorder for Owyhee County, Idaho.

The Trustee has no knowledge of a more particular description of the above referenced real property, but for purposes of compliance with Section 60-113 Idaho Code, the Trustee has been informed that according to the County Assessors office, the address of **216 W. Arizona Ave., Homedale**, Idaho, is sometimes associated with said real property.

Said sale will be made without covenant or warranty regarding title, possession or encumbrances to satisfy the obligation secured by and pursuant to the power of sale conferred in the deed of trust executed by **NOLAND VIRGLE ROWLEY, an unmarried man**, as grantors, to **FIRST AMERICAN TITLE COMPANY OF IDAHO, INC.**, an Idaho Corporation, as successor trustee, for the benefit and security of **North American Mortgage Company**, as beneficiary, recorded **June 4, 1997**, as Instrument No. **221958**, and assigned to **CITIMORTGAGE, INC., fka CitiCorp Mortgage, Inc.**, as beneficiary, by assignment recorded **September 3, 1998**, as Instrument No. **225999**, Mortgage Records of Owyhee County, Idaho.

THE ABOVE GRANTORS ARE NAMED TO COMPLY WITH SECTION 45-1506 (4) (A), IDAHO CODE. NO REPRESENTATION IS MADE THAT THEY ARE, OR ARE NOT, PRESENTLY RESPONSIBLE FOR THIS OBLIGATION.

The default for which this sale is to be made is the failure to pay when due, under Deed of Trust Note, the monthly payments for Principal, Interest and Impounds of \$ 308.27 due per month for the months of January through April, 2003 and all subsequent payments until the date of sale or reinstatement, with a monthly late charge accruing at \$12.95, uncollected late charges are due in the amount of \$51.80, with interest accruing at 8.25 percent per annum, and continuing to accrue from December 1, 2002. The principal balance owing as of this date on the obligation secured by said Deed of Trust is \$32,196.22, plus accruing interest, costs and advances. All

delinquent amounts are now due, together with accruing late charges and interest, unpaid and accruing taxes, assessments, trustee’s fees, attorney’s fees, and any amounts advanced to protect the security associated with this foreclosure and that the beneficiary elects to sell or cause the trust property to be sold to satisfy said obligation.

Dated: May 30, 2003

FIRST AMERICAN TITLE COMPANY OF IDAHO, INC.
By Monine Cole Trust Officer
FA-15924/7301.22374

6/18,25-7/2,9/03

NOTICE OF TRUSTEE’S SALE Trustee’s Sale No. 02-WM-33796

Notice is hereby given that, Fidelity National Title Insurance, the duly appointed Successor Trustee, will on October 24, 2003, at the hour of 11:00 AM, of said day, on the steps of the Owyhee County Courthouse, located at the corner of Highway 78 and Hailey Street, Murphy, ID, sell at public auction to the highest bidder, for cash, in lawful money of the United States, all payable at the time of sale, the following described real and personal property (hereafter referred to collectively as the “Property”), situated in the County of Owyhee, State of Idaho, to-wit: EXHIBIT ‘A’ This parcel is a portion of the NE1/4 of Section 2, Township 1 North, Range 4 West of the Boise Meridian and is more particularly described as follows: COMMENCING at the Northwest corner of said NE1/4; thence South 0f 00’00” West along the westerly boundary of said NE1/4 a distance of 2032.17 feet to the TRUE POINT OF BEGINNING: thence North 90f 00’00” East a distance of 1106.99 feet to a point on the westerly right-of-way for the Opaline Ditch (said right-of-way lies 20.00 fet westerly from and parallel with the centerline of said Ditch); thence South 3f 31’47” East along said right-of-way a distance of 321.53 feet; thence North 90f 00’00” West a distance of 1126.79 feet to the westerly boundary of said NE1/4; thence North 0f 00’00” East along said westerly boundary a distance of 320.92 feet to the TRUE POINT OF BEGINNING. And including that certain 1998 28 X 60 Redman Moel Home, Model Wynnewood 6301 with a Seriel Number of “Factory Order” The Trustee has no knowledge of a more particular description of the above-referenced Property but, for purposes of compliance with Section 60-113 of Idaho Code, the Trustee has been informed that the address of NNA Clark Road aka HC 79 Box 990, Melba, ID 83641, is sometimes associated with said real property. Said sale will be made without covenant or warranty regarding title, possession or encumbrances to satisfy the obligation secured by and pursuant to the power of sale conferred in the Deed of Trust executed by Randy L. Ryals and Julie A. Ryal, husband and wife, as Grantor, to First American Title Co., as Trustee, for the benefit and security of Washington Mutual Bank FSB, as Beneficiary, dated 9/25/1997, recorded 9/26/1997, under Instrument No. 222978, Mortgage records of Owyhee County, Idaho, the beneficial interest in which is presently held by Washington Mutual Bank, FSB. The above Grantors are named to comply with Section 45-1506(4)(A), Idaho Code. No representation is made that they are, or are not, presently responsible for this obligation. The default for which is sale is made is the failure to pay when due under the Deed of Trust Note dated 9/25/1997, the monthly payment which became due on 3/1/

2002 and all subsequent monthly payments, plus late charges and other costs and fees as set forth. Amount due as of June 17, 2003 Delinquent Payments from March 01, 2002 8 payments at \$892.44 each \$7,139.52 8 payments at \$799.68 each \$6,397.44 (03-01-02 through 06-17-03) Late Charges: \$692.60 Beneficiary Advances: \$50.00 Suspense Credit: \$-1,154.58 Total: \$13,124.98 All delinquencies are now due, together with unpaid and accruing taxes, assessments, trustee’s fees, attorney’s fees, costs and advances made to protect the security associated with this foreclosure. The principal balance is \$104,527.03, together with interest thereon at 9.274% per annum from 2/2/2002 to 11/1/2002, 9.274% per annum from 11/1/2002, until paid. The Beneficiary elects to sell or cause the trust property to be sold to satisfy said obligation. Dated: June 17, 2003
Fidelity National Title Insurance, Trustee By A Fragassi, AVP c/o Regional Trustee Services Corporation, 720 Seventh Avenue, Suite 100, Seattle, WA 98104 Phone: (206) 340-2550 Sale Information: <http://www.rtrustee.com> ASAP545138

7/2,9,16,23/03

NOTICE OF TRUSTEE’S SALE Loan No. 000000010098271 T.S. No. 1054278-09 Parcel No.

On October 08, 2003, at the hour of 11:00am, of said day, At the lobby of the Owyee County Courthouse,, Hwy 78, Owyhee, Idaho, First American Title Insurance Company, as trustee, will sell at public auction, to the highest bidder, for cash, cashier’s check drawn on a State or National Bank, a check drawn by a State or Federal Credit Union, or a check drawn by a State or Federal Savings and Loan Association, Savings Association, or Savings Bank, all payable at the time of sale, the following described real property, situated in the County of Owyhee, State of Idaho, and described as follows, to wit: Lots 7 and 8 of block 3 of Patton’s Subdivision to the Village of Marsing. Owyhee County, Idaho. Commonly known as 317 Mccullum Street Marsing Id 83639. Said sale will be made without covenant or warranty, express or implied, regarding title, possession or encumbrances to satisfy the

obligation secured by and pursuant to the power of sale conferred in the Deed of Trust executed by Edward M. Smith and Barbara J. Smith, husband and wife as Grantor, to Pioneer Title Company, as trustee, for the benefit and security of Meritage Mortgage Corporation as beneficiary, recorded March 20, 1998, as Instrument No. 224326, Mortgage records of Owyhee County, Idaho. THE ABOVE GRANTORS ARE NAMED TO COMPLY WITH SECTION 45-1506(4)(a), IDAHO CODE. NO REPRESENTATION IS MADE THAT THEY ARE, OR ARE NOT, PRESENTLY RESPONSIBLE FOR THIS OBLIGATION. The default for which this sale is to be made is: Failure to pay the monthly payment due February 1, 2003 of principal, interest and impounds and subsequent installments due thereafter; plus late charges; together with all subsequent sums advanced by beneficiary pursuant to the terms and conditions of said deed of trust. The estimated balance owing as of this date on the obligation secured by said deed of trust is \$51,165.35, including interest, cost and expenses actually incurred in enforcing the obligations thereunder or in this sale, as trustee’s fees and/or reasonable attorney’s fees as authorized in the promissory note secured by the aforementioned Deed of Trust. First American Title Insurance Company C/o Cal-western Reconveyance Corporation P.O. Box 22004 El Cajon Ca 92022-9004 (619)590-9200 Dated: June 05, 2003 Signature By: First American Title Insurance Company Luis Cerda. R-96589

6/25-7/2,9,16/03

Have
a news tip?
Call us!
337-4681

Score a Home Run!



Something you’d like to sell? A lot of “somethings” to sell? You can start a run of eager buyers on your home when you advertise your yard, porch, or garage sale in our Classifieds.

Turn “old” into “gold” by selling all those unwanted items fast!

337-4681

The Owyhee Avalanche

Public notices

BRUNEAU WATER SYSTEM IMPROVEMENTS PHASE I - STORAGE RESERVOIR BRUNEAU WATER & SEWER DISTRICT OWYHEE COUNTY, IDAHO

Advertisement for Bids

Bruneau Water & Sewer District
Separate sealed Bids for the construction of a 200,000-gallon coated steel water reservoir, reservoir foundation, reservoir piping, site earthwork, finish grading, fencing, site piping, existing reservoir demolition, and related work, will be received by the Bruneau Water & Sewer District, at the Boise office of
J-U-B ENGINEERS, 250 S. Beechwood Avenue, Suite 201, Boise, ID 83709, until 2:00 p.m. (local time) July 25, 2003, and then at said office publicly opened and read aloud.

A **pre-bid meeting** will be held at the **Bruneau District Library, #2 Ruth Street, at 2:00 p.m. on July†17,†2003.** It is strongly recommended that bidders attend the pre-bid meeting.

The Contract Documents may be examined at the following locations:

Bruneau District Library, #2 Ruth Street, Bruneau, Idaho
J-U-B ENGINEERS, Inc., 250 S. Beechwood Avenue, Suite 201, Boise, Idaho

Associated General Contractors, 110 North 27th Street, Boise, Idaho
McGraw-Hill Construction, 5254 Chinden Boulevard, Boise, Idaho
Copies of the Contract Documents may be obtained at the office of J-U-B ENGINEERS, Inc., located at 250 S. Beechwood Avenue, Suite 201, Boise, Idaho, upon a non-refundable payment of \$20.00 for each set.

The Owner reserves the right to waive any informality or to reject any or all Bids. Each Bidder must deposit with his Bid security in the amount, form and subject to the conditions provided in the Instructions to Bidders. No Bidder may withdraw his Bid within thirty-five (35) days after the date of the opening thereof.

Bruneau Water & Sewer District
Owyhee County, Idaho

6/25-7/9,16/03

The following application(s) have been filed to appropriate the public waters of the State of Idaho: 2-10226

GUY GIVENS
1010 CRESTWOOD DR
MERIDIAN ID 83642
JUDY GIVENS
1010 CRESTWOOD DR
MERIDIAN ID 83642
Point(s) of Diversion
L5 (NWSW) S21 T01S
R02W OWYHEE County
Source SNAKE RIVER
Tributary To COLUMBIA RIVER
Use: IRRIGATION 03/01
To 11/15/0.09 CFS
Total Diversion: 0.09 CFS
Date Filed: 05/16/2003
Place Of Use: IRRIGATION
T01S R02W S21 NWSW Lot 5
Number of Acres 3
Remark: Applicant agrees to mitigate consumptive use in the future as needed.

Permits will be subject to all prior water rights. Protests may be submitted based on the criteria of Sec 42-203A, Idaho Code.

Any protest against the approval of this application must be filed with the Director, Dept. of Water Resource, Western Region, 2735 Airport Wy, Boise ID 83705 together with a protest fee of \$25.00 for each application on or before 07/21/2003. The protestant must also send a copy of the protest to the applicant.

KARL J DREHER, Director
7/2,9/03

The following application(s) have been filed to appropriate the public waters of the State of Idaho: 51-12985

WATERONE ENTERPRISES LLC
251 VERSAILLES CT
TRACY CA 95376
Point(s) of Diversion SWNWNW S24 T16S R09E OWYHEE County Source SPRINGS
Tributary To EAST FORK JARBIDGE RIVER
Point(s) of Diversion SWNWNW S24 T16S R09E OWYHEE County Source SPRINGS
Tributary To EAST FORK JARBIDGE RIVER
Use: COMMERCIAL 01/01 To 12/31 0.1 CFS
Total Diversion: 0.1 CFS
Date Filed: 04/25/2003
Place Of Use: COMMERCIAL
T16S R09E S24 NWNW
Remark: Applicant agrees to mitigate consumptive use in the future as needed.

Permits will be subject to all prior water rights. Protests may be submitted based on the criteria of Sec 42-203A, Idaho Code. Any protest against the approval of this application must be filed with the Director, Dept. of Water Resource, Western Region, 2735 Airport Wy, Boise ID 83705 together with a protest fee of \$25.00 for each application on or before 07/21/2003. The protestant must also send a copy of the protest to the applicant.

KARL J DREHER, Director
7/2,9/03

The following application(s) have been filed to appropriate the public waters of the State of Idaho: 55-13826

US DEPT OF INTERIOR
BUREAU OF LAND
MANAGEMENT
3948 DEVELOPMENT AVE
BOISE ID 83705
Point(s) of Diversion NESWNW S12 T12S R01E OWYHEE County Source UNNAMED STREAM
Tributary To BATTLE CREEK
Use: STOCKWATER
STORAGE 04/01 To 11/30 6 AFA
Use: WILDLIFE STORAGE 01/01 To 12/31 6 AFA
Total Diversion: 6 AFA
Date Filed: 05/09/2003
Place Of Use: STOCKWATER
STORAGE
T12S R01E S12 SWNW
SENW NESW NWSE
Place Of Use: WILDLIFE
STORAGE
T12S R01E S12 SWNW
SENW NESW NWSE

Permits will be subject to all prior water rights. Protests may be submitted based on the criteria of Sec 42-203A, Idaho Code. Any protest against the approval of this application must be filed with the Director, Dept. of Water Resource, Western Region, 2735 Airport Wy, Boise ID 83705 together with a

protest fee of \$25.00 for each application on or before 07/21/2003. The protestant must also send a copy of the protest to the applicant.

KARL J DREHER, Director
7/2,9/03

The following application(s) have been filed to appropriate the public waters of the State of Idaho: 55-13827

US DEPT OF INTERIOR
BUREAU OF LAND
MANAGEMENT
3948 DEVELOPMENT AVE
BOISE ID 83705
Point(s) of Diversion SESENE S33 T09S R03W OWYHEE County Source UNNAMED SPRING
Tributary To NIP AND TUCK CREEK
Use: STOCKWATER 05/01 To 11/30 0.02 CFS
Use: WILDLIFE 01/01 To 12/31 0.02 CFS
Total Diversion: 0.02 CFS
Date Filed: 04/30/2003
Place Of Use: WILDLIFE
T09S R03W S33 SENE
Place Of Use: STOCKWATER
T09S R03W S33 SENE

Permits will be subject to all prior water rights. Protests may be submitted based on the criteria of Sec 42-203A, Idaho Code. Any protest against the approval of this application must be filed with the Director, Dept. of Water Resource, Western Region, 2735 Airport Wy, Boise ID 83705 together with a protest fee of \$25.00 for each application on or before 07/21/2003. The protestant must also send a copy of the protest to the applicant.

KARL J DREHER, Director
7/2,9/03

NOTICE TO CREDITORS Case No. SP-03-01869M IN THE DISTRICT COURT OF THE THIRD JUDICIAL DISTRICT OF THE STATE OF IDAHO, IN AND FOR THE COUNTY OF OWYHEE Magistrate Division

In the Matter of the Estate of FRANCES E. HOFFMAN, Deceased.

NOTICE IS HEREBY GIVEN that the undersigned have been appointed Co-Personal Representatives of the above-named Estate. All persons having claims against the said deceased are required to present their claims within four (4) months after the date of the first publication of this notice or said claims will be forever barred.

Claims must both be presented to the Co-Personal

Representatives of the Estate, at the law offices of White Peterson, 5700 East Franklin Road, Suite 200, Nampa, ID 83687-8402, and filed with the Clerk of the Court.

Dated this 14 day of May, 2003.
DAVID G. HOFFMAN
Co-Personal Representative
10126 Airpark Loop
Givens Hot Springs, ID 83641
(208) 495-2307
JAN E. CAMERON
Co-Personal Representative
17138 Freshwater Lane
Cornelius, NC 28031
(704) 892-8211

7/9,16,23/03

NOTICE TO CREDITORS CASE NO: SP-03-01857 IN THE DISTRICT COURT OF THE THIRD JUDICIAL DISTRICT OF THE STATE OF IDAHO, IN AND FOR THE COUNTY OF OWYHEE

In the Matter of the Estate of MARILYN K. HUTER, a.k.a. MARILYN KAYE HUTER Deceased Person.

NOTICE IS HEREBY GIVEN that the undersigned have been appointed Co-Personal Representatives of the above named estate. All persons having claims against the said decedent are required to present their claims within four months after the date of the first publication of this notice or said claims will be forever barred. Claims must be both filed with the Court and presented to the Co-Personal Representatives of the estate at the law office of DAVID E. KERRICK, 1001 Blaine Street, (Post Office Box 44) Caldwell, Idaho.

DATED This 11th day of June, 2003.

NORMAN A. HUTER
Co-Personal Representative
MICHAEL E. HUTER
Co-Personal Representative
DAVID E. KERRICK
Attorney at Law
1001 Blaine Street
Post Office Box 44
Caldwell, ID 83606-0044
Telephone: (208) 459-4574
Facsimile: (208) 459-4573
Idaho State Bar# 2565
Attorney for Co-Personal Representatives

6/25-7/2,9/03

NOTICE OF TRUSTEE’S SALE

On Friday, the 7th day of November, 2003, at the hour of 10:00 a.m. o’clock of said day at the office of the Trustee at 117 S. 9th Ave. Ste. 7, Caldwell, Idaho, Michaelina B. Murphy, as Trustee, will sell at public auction, to the highest bidder, for cash in lawful money of the United States of America, all payable at the time of the sale, the following described real property, situated in the County of Owyhee, State of Idaho, to-wit:

See Attached Exhibit ‘A’
Said sale will be made without covenant or warranty regarding title, possession or encumbrances to satisfy the obligation secured by and pursuant to the power of sale conferred in the deed of Trust executed by Duane Kenny, a married man, as Grantor, to Pioneer Title Company of Canyon County, an Idaho corporation, as Trustee, for the benefit and security of Nathan R. Coe and Linda R. Coe, husband and wife, as Beneficiary

and recorded in Owyhee County as instrument number 228950. Substitution of Trustee having been sight May 19, 2003 and recorded June 9, 2003 as Instrument No. 243819, records of Owyhee County, Idaho, naming Michaelina B. Murphy as Trustee. The above Grantors are named to comply with Idaho Code Section 45-1506 (4) (a). No representation is made that they are or are not presently responsible for this obligation.

The default for which this sale is to be made is failure of the Grantor to pay when due, monthly installments as set forth on the Note secured by said Deed of Trust. Monthly installments in the amount of \$987.81, which include principal, interest and escrow impounds, is due for March 2003 and the 18th day of each and every month thereafter. The Beneficiary exercised their option to call the whole sum of the principal and interest, which was immediately due and payable upon Grantor’s failure to make the March 18, 2003 installment when due. Interest continues to accrue at the rate of 9 percent per annum. The principal balance is \$17,365.25 plus accruing interest, and;

Failure to pay real property taxes for the year 1999 in the amount of \$265.52, and for the year 2000 in the amount of \$187.80, and for the year 2001 in the amount of \$174.08, and for the year 2002 in the amount of \$133.49, plus penalty and interest do date of payment.

ALL AMOUNTS are now due and payable along with all costs and fees associated with this foreclosure.

Dated this 12th day of June 2003.
Michaelina Murphy, Trustee
Murphy Law Office, PLLC
117 S. 9th Ave. Ste. 7
PO Box 339
Caldwell, Idaho 83606
Attorneys for Trustee

Exhibit “A”

A tract of land lying in the Southeast Quarter of Section 33, Township 3 North, Range 4 West, Boise Meridian, Owyhee County, Idaho, more particularly described as follows:

BEGINNING at a point on the North boundary line of State Highway No. 55 (formerly State Highway No. 20) which point is East 955.0 feet and North 33.0 feet from the South Quarter corner of said Section 33; thence running North a distance of 896.0 feet; thence

North 85° 40’ East, a distance of 483.3 feet; thence running South, a distance of 923.5 feet to a point of the North boundary line of State Highway No. 55, which point is 482.1 feet East from the POINT OF BEGINNING; thence

West along said boundary line 482.1 feet to the POINT OF THE BEGINNING.

6/25-7/2,9,16/03

We Do Windows!

(Window Envelopes, that is.)

And we also do letterheads, business cards, multiple-part forms, newsletters, booklets, tickets, flyers, certificates, pads, and regular envelopes, too!

Owyhee Publishing Co., Inc.

P.O. Box 217 • Homedale, ID • 337-4866

Public notices

**NOTICE OF TRUSTEE’S SALE
TS NO. 03-04451
DOC ID
#00013437642005N
TITLE ORDER NO.
03022685
PARCEL NO.
RP02N04W104855A**

The following described property will be sold at public auction to the highest bidder, payable in lawful money of the United Sates, At the entrance to the Owyhee County Courthouse, Highway 78, Mile Marker 29 1/2, Murphy, ID 83650, on 09/23/2003 at 11:30 am, (recognized local time) for the purpose of foreclosing that certain Deed of Trust recorded 04/25/2001 as Instrument Number 235719, and executed by RYAN L CORTA, as Grantor(s), in favor of “MERS” MORTGAGE ELECTRONIC REGISTRATION SYSTEMS, INC., as Beneficiary, to STEWART TITLE OF BOISE, INC., the Current Trustee of record, covering the following real property located in Owyhee County, state of Idaho: PLEASE SEE ATTACHED EXHIBIT “A”

The Trustee has no knowledge of a more particular description of the above referenced real property, but for purpose of compliance with Idaho Code, Section 60-113, the Trustee has been informed that the street address of, ROUTE 1 BOX 465, MARSING, ID 83639 is sometimes associated with said real property.

Bidders must be prepared to tender the trustee in full amount of the bid at the sale in the form of cash, or a cashier’s check drawn on a state or federally insured savings institution. Said sale will be made without covenant or warranty, express or implied, regarding title, possession or encumbrances to satisfy the obligation secured by the pursuant to the power of sale conferred in that certain Deed of Trust.

The default for which this sale is to be made is:

Failure to pay the monthly payment due 12/01/2002 of principal, interest and impounds and subsequent installments due thereafter; plus late charges, with interest currently accruing at 8.500 percent per annum; together with all subsequent sums advanced by beneficiary pursuant to the terms and conditions of said Deed of Trust and any supplemental modifications thereto. The principal balance owing as of this date on said obligation is \$127,406.52, plus interest, costs and expenses actually incurred in enforcing the obligations thereunder and in this sale, together with any unpaid and/or accruing real property taxes, and/or assessments, attorneys’ fees, Trustees’ fees and costs, and any other amount advanced to protect said security, as authorized in the promissory note secured by the aforementioned Deed of Trust.

Therefore, the Beneficiary elects to sell, or cause said trust property to be sold, to satisfy said obligation.

NOTICE IS HEREBY GIVEN THAT THIS FIRM IS ATTEMPTING TO COLLECT A DEBT AND ANY INFORMATION OBTAINED WILL BE USED FOR THAT PURPOSE, AND THAT THE DEBT MAY BE DISPUTED. THE ABOVE GRANTORS ARE NAMED TO COMPLY WITH SECTION 45-1506(4)(a) IDAHO CODE. NO REPRESENTATION IS MADE THAT THEY ARE, OR ARE NOT, PRESENTLY

RESPONSIBLE FOR THIS OBLIGATION.

DATED: May 23rd, 2003
STEWART TITLE OF BOISE, INC.
REV PETERSEN, SR. TRUST OFFICER
9196 West Emerald, Suite 100
Boise, ID 83704
Phone: (800) 281-8219 for information.

EXHIBIT “A”
LEGAL DESCRIPTION
Order Number: 03022685-BP

A part of the Southwest quarter of the Southwest quarter and Southeast quarter of the Southwest quarter, Section 10, Township 2 North, Range 4 West, Boise Meridian, Owyhee County, Idaho.

Beginning at the Southeast corner of said Southwest quarter of the Southwest quarter (West 1/16 corner), said corner monumented with a 3 inch diameter brass disk, thence

North 89° 38’ 37” West a distance of 331.17 feet along the southerly boundary of said Southwest quarter of the Southwest quarter to a point on the centerline of South Canal, thence

North 23° 53’ 35” East a distance of 371.17 feet along the centerline of said South Canal, thence 97.07 feet along the arc of a 164.29 foot radius, tangent curve right, the long chord of which bears

North 40° 49’ 14” East a distance of 95.67 feet along the centerline of said South Canal, thence

North 57° 44’ 53” East a distance of 150.12 feet along the centerline of said South Canal, thence

North 54° 40’ 06” East a distance of 107.12 feet along the centerline of said South Canal, thence

South 89° 38’ 05” East a distance of 409.82 feet to a 1/2 inch diameter iron pin, thence

South 24° 28’ 23” West a distance of 112.85 feet to a 1/2 inch diameter iron pin, thence 148.74 feet along the arc of a 250.00 foot radius, tangent curve right, the long chord of which bears

South 41° 31’ 01” West a distance of 146.55 feet to a 1/2 inch diameter iron pin, thence

South 58° 33’ 39” West a distance of 303.36 feet to a 1/2 inch diameter iron pin, thence 219.00 feet along the arc of a 215.62 foot radius, tangent curve left, the long chord of which bears

South 29° 27’ 47” West a distance of 209.71 feet to the point of beginning.

Together with and subject to: A 60.00 foot wide road and utility easement lying 30.00 feet on each side of the following described centerline:

Beginning at the Southwest corner of the Southeast quarter of the Southwest quarter, Section 10, Township 2 North, Range 4 West, Boise Meridian, Owyhee County, Idaho (West 1/16 corner), said corner monumented with a 3 inch diameter brass disk, thence 219 feet along the arc of a 215.62 foot radius, tangent curve right, the long chord of which bears

North 29° 27’ 47” East a distance of 209.71 feet to a 1/2 inch diameter iron pin, thence

North 58° 33’ 39” East a distance of 303.36 feet to a 1/2 inch diameter iron pin; thence 148.74 feet along the arc of a 250.00 foot radius, tangent curve left, the long chord of which bears

North 41° 31’ 01” East a distance of 146.55 feet to a 1/2 inch diameter iron pin, thence

North 24° 28’ 23” East a distance of 1044.30 feet to a 1/2 inch diameter iron pin; thence 276.14 feet along the arc of a 250.00 foot radius, tangent curve right, the long chord of which bears

North 56° 06’ 57” East a distance of 262.31 feet to a 1/2 inch diameter iron pin, thence

North 87° 45’ 31” East a distance of 198.63 feet to a

point on the Easterly boundary of said Northeast quarter of the Southwest quarter, said point being the terminus of the easement and monumented with a 1/2 inch diameter iron pin.

6/18,25-7/2,9/03

NOTICE OF TRUSTEE’S SALE

On the 8th day of **October, 2003**, at the hour of **10:45** A.M., of said day, (recognized local time), in the **lobby of the Owyhee County Courthouse, Murphy**, in the County of Owyhee, State of Idaho.

First American Title Company of Idaho, Inc., an Idaho Corporation, as successor trustee, will sell at public auction, to the highest bidder, for cash or cashiers check (cash equivalent), in lawful money of the United States, all payable at the time of sale in compliance with Section 45-1506(9) Idaho Code, the following described real property, situated in the County of Owyhee, State of Idaho, and described as follows, to-wit:

The East 25 feet of Lot 11 and the West 37 1/2 feet of Lot 12 in Block 19 of the AMENDED PLAT OF THE CITY OF HOMEDALE, in Owyhee County, Idaho.

The Trustee has no knowledge of a more particular description of the above referenced real property, but for purposes of compliance with Section 60-113 Idaho Code, the Trustee has been informed that according to the County Assessors office, the address of **420 W Montana Ave., Homedale**, Idaho, is sometimes associated with said real property.

Said sale will be made without covenant or warranty regarding title, possession or encumbrances to satisfy the obligation secured by and pursuant to the power of sale conferred in the deed of trust executed by **PORFIRIO J GOMEZ AND JULIE A GOMEZ, husband and wife**, as grantors, to FIRST AMERICAN TITLE COMPANY OF IDAHO, INC., an Idaho Corporation, as successor trustee, for the benefit and security of **First Security Bank**, N.A., as beneficiary, recorded October 2, 2000, as Instrument No. 233878, and assigned to **MORTGAGE E L E C T R O N I C REGISTRATION SYSTEMS, INC., (solely as nominee for Lender, and Lender’s successors and assigns)**, as beneficiary, by assignment recorded **June 7, 2002**, as Instrument No. 239881, Mortgage Records of Owyhee County, Idaho.

THE ABOVE GRANTORS ARE NAMED TO COMPLY WITH SECTION 45-1506 (4) (A), IDAHO CODE. NO REPRESENTATION IS MADE THAT THEY ARE, OR ARE NOT, PRESENTLY RESPONSIBLE FOR THIS OBLIGATION.

The default for which this sale is to be made is the failure to pay when due, under Deed of Trust Note, the monthly payments for Principal, Interest and Impounds of \$640.26, due per month for the months of December, 2002 and January through April, 2003 and all subsequent payments until the date of sale or reinstatement, with a monthly last charge accruing at \$25.61, with interest accruing at 7 percent per annum, and continuing to accrue from November 1, 2002. The principal balance owing as of this date on the obligation secured

by said Deed of Trust is \$79,852.92, plus accruing interest, costs and advances. All delinquent amounts are now due, together with accruing late charges and interest, unpaid and accruing taxes, assessments, trustee’s fees, attorney’s fees, and any amounts advanced to protect the security associated with this foreclosure and that the beneficiary elects to sell or cause the trust property to be sold to satisfy said obligation.

Date: May 28, 2003
FIRST AMERICAN TITLE COMPANY OF IDAHO, INC.
By Monine Cole, Trust Officer
FA-16001/7023.26748
6/18,25-7/2,9/03

**NOTICE OF TRUSTEE’S SALE
Loan No. 0413864802
T.S. No. 1046347-09
Parcel No.**

On October 08, 2003, at the hour of 11:00am, of said day, at On the steps of the Owyhee County Courthouse located at the, Corner Of Highway 78 and Hailey St., Murphy, Idaho, Fidelity National Title Ins Company, as trustee, will sell at public auction, to the highest bidder, for cash, cashier’s check drawn on a State or National Bank, a check drawn by a State or Federal Credit Union, or a check drawn by a State or Federal Savings and Loan Association, Savings Association, or Savings Bank, all payable at the time of sale, the following described real property, situated in the County of Owyhee, State of Idaho, and described as follows, to wit: A parcel of land being a portion of the east one-half of the northwest quarter of section 28, township 3 North, range 4 West, Boise Meridian, Owyhee County, Idaho and being more particularly described as follows: Commencing at a found Brass Cap marking the Northwest corner of said section 28, township 3 North, range 4 West, Boise Meridian, Owyhee County, Idaho and being the centerline intersection of Dunlap Street and Edison Street, said Brass Cap bears North 0°00’00” East, 2666.85 feet from a found 5/8” iron pin marking the West quarter corner of said section 28 and being the centerline intersection of said Edison Street and Bruneau Highway; thence South 88°52’33” East, 1996.52 feet along the North boundary of the said Northwest quarter of section 28 and along the said centerline of Dunlap Street to a found 5/8” iron pin; thence South 01°06’45” West, 1315.59 feet along the centerline of an existing concrete irrigation ditch to a point, said point being witnessed by a found Ω” iron pin which bears North 89°09’40” West, 5.00 feet; said point also marking the Real Point of Beginning; thence continuing South 01°06’45” West, 674.44 feet along said centerline of the existing concrete irrigation ditch to a point on the South boundary of the North one-half of the Southeast quarter of the Northwest quarter of section 28, said point being witness by a set Ω” iron pin which bears North 89°09’40” West, 5.00 feet;

thence North 89°09’40” West, 319.85 feet along said South boundary of the North one-half of the Southeast quarter of the Northwest quarter of section 28 to a set Ω” iron pin; thence North 0°34’46” East, 674.44 feet to a set Ω” iron pin; thence South 89°09’40” East, 326.12 feet to the Real Point of Beginning. Together with that certain 60.00 foot wide easement for ingress, egress, utility and irrigation maintenance as described as Easement Description, NO. 6 in document entitled “Correction Affidavit, Louck’s Property Division No. Two”, recorded February 7, 1997 as Instrument No. 220920 and as shown as existing 60’ wide Easement No. 6 and No. 13 on the Record of Survey for Les and Lavada Loucks, recorded November 24, 1997 as Instrument No. 223375, all in the Owyhee County Records. Commonly known as Route 1 Box 63 Marsing Id 83639. Said sale will be made without covenant or warranty, express or implied, regarding title, possession or encumbrances to satisfy the obligation secured by and pursuant to the power of sale conferred in the Deed of Trust executed by Thomas H. Porter and Linda M. Porter, husband and wife as Grantor, to Pioneer Title Company Of Canyon County, as trustee, for the benefit and security of Mortgage Electronic Registration Systems, Inc. as beneficiary, recorded April 02, 2002, as Instrument No. 239177, Mortgage records of Owyhee County, Idaho. THE ABOVE GRANTORS ARE NAMED TO COMPLY WITH SECTION 45-1506(4)(a), IDAHO CODE. NO REPRESENTATION IS MADE THAT THEY ARE, OR ARE NOT, PRESENTLY RESPONSIBLE FOR THIS OBLIGATION. The default for which this sale is to be made is: Failure to pay the monthly payment due September 1, 2002 of principal, interest and impounds and subsequent installments due thereafter; plus late charges; together with all subsequent sums advanced by beneficiary pursuant to the terms and conditions of said deed of trust. The estimated balance owing as of this date on the obligation secured by said deed of trust is \$193,474.45, including interest, cost and expenses actually incurred in enforcing the obligations thereunder or in this sale, as trustee’s fees and/or reasonable attorney’s fees as authorized in the promissory note secured by the aforementioned Deed of Trust. Fidelity National Title Ins Company P.O. Box 22010 El Cajon Ca 92022-9004 (888)445-3162 Dated: June 05, 2003 Signature By: Fidelity National Title Insurance Company Gerri Sheppard. R-96588
6/25-7/2,9,16/03

*Buy it, sell it,
trade it, rent it...
in the
Classifieds!*

Keep informed.

Subscribe to

The Owyhee Avalanche



FOR SALE
Used tractor parts 100's of salvaged farm tractors and combines. Nampa Tractor Salvage, 9055 Hwy 20, Nampa, ID 83687. (208) 467-4430.
Italian leather couch and loveseat. Brand new still wrapped in plastic. Retail \$2450. Must sale \$895. 208-888-1464.

Bedroom set 5-piece cherry set. Brand new in box. List \$1450. Must sale \$399. 208-888-1464
Bed-queen pillowtop mattress set. Brand new, still in plastic. Must sale \$165. **Queen orthopedic set.** Brand new, must sale \$135. 208-866-7476.
King-sized pillowtop mattress set. New, in bag, with warranty. Must sale \$235. 208-866-7476
Cherry Sleigh bed. Solid wood. New in box. Value \$850. Sacrifice \$295. 280-888-1464

YARD SALE
Vision Bible Church of Marsing is accepting donations of clothing or household items for their Family Farm Day Yard Sale to be held the last weekend in September. If interested in donating please call 896-5407 or 896-4300
Flea Market/Garage sale vendors needed, Family Farm Days, Sept. 27th-28th, \$35., Marsing, Idaho, 250-9122
Sat 8 to 5, 2 miles west of Homedale on Hwy 19
Big moving sale 11th and 12th: antiques, farm equipment/bailer, winrower, corn sheller; furniture, canning jars, clothes, etc. Between Fargo Rd. and River Bend Golf on Upper Pleasant Ridge Rd., Wilder.
Saturday 8-4: Bookcases, school desks, furniture, tons of clothes, portable basketball hoop, treadmill, jars, misc. 23725 Homedale Rd., b/twn Allendale and Van Slyke.

FOR RENT
1 bdrm mobile home in nice park in Homedale. \$350 per mo., space rent included. 337-6272
Apartment for rent, 230 W. Montana \$280 mo. 573-2798
2 bdrm home, fenced yard, garage, 403 Cascade Dr., Homedale, \$500 mo. + deposit. Call 482-6940 ask for Javier Gonzales.
1/2 acre mobile home lot for rent, 5 miles south of Marsing on Opaline Rd., for more info call 896-5667

HOMEDALE GARDEN APARTMENTS

FOR SENIOR CITIZENS and/or HANDICAPPED OR DISABLED PERSONS
RENT BASED ON INCOME
USDA/RURAL DEVELOPMENT FINANCED

GIVE US A CALL: (208)337-4715
409 SOUTH FIRST WEST
HOMEDALE, IDAHO 83628



Small 2 bdrm home in country, Homedale school district, \$295., no pets, no smoking, reference and cleaning deposit required 482-7552 after 6pm
3 bdrm home in country, large yard, attached garage, **NO** inside pets, \$500 mo. + deposit, 337-3312 after 5pm

HELP WANTED

Needed: A person that is familiar with the Caldwell, Homedale, Nampa and Parma communities that is interested in coordinating and recruiting adults to mentor in the schools, grades 3 to 8. Send letter of interest and resume to JUMP, 116 E. Idaho Ave, Homedale, 83628, by 07-16-03.

*For FAST results...
try the
Classifieds!*

THE BUSINESS DIRECTORY

CERTIFIED LOCKSMITH  HARVEY'S AUTO PARTS LOCKSMITH & TOWING KEYS MADE • LOCKS REPAIRED EMERGENCY OPENINGS 211 MAIN ST. MARSING, ID • 896-4643	ELECTRICIAN H&HELECTRIC Serving Owyhee County for 25 years Jeff Haylett 337-4881	SIGNS & BANNERS Allied Sign <small>INCORPORATED</small> Located in and Serving all of Owyhee County. Also serving Canyon & Malheur Counties 337-6215 UPS SHIPPING	SAND & GRAVEL  Owyhee Sand, Gravel & Concrete 337-5057 • 337-4597 208-573-2341 • 208-573-2343 HOMEDALE, IDAHO ALL TYPES OF ROCK & DIRT STATE CERTIFIED DRAIN ROCK FREE ESTIMATES ON ROADS & DRIVEWAYS <i>Chuck, Ray & Bill Maxwell</i>	CARPENTRY Harris Design Custom Wood Carving Wood Burning Blanket Chests • Wall Plaques Carved Headboards & More! Marsing, Idaho 896-4632
HEALTH CARE  THE CLINIC AT WILDER RENEE KINDLER, FNP 215 3rd St., Wilder Ph - 482-7430 After Hrs - 208-327-8016	SIDING CONTRACTORS MGM Siding Contractors <i>William T. Bruce</i> 1024 W. Finch Dr. Nampa • 465-0214 • Fax 465-9831 Vinyl, Steel & Aluminum Siding Vinyl Windows  Craftsmanship You can Trust	AUTO REPAIR River Country AUTO SALES TRUCKS, CARS & 4X4'S 208-896-4530 COUNTRY PRICES • NO CREDIT OK • BUY HERE, PAY HERE 932 MAIN • P.O. BOX 338 • MARSING, IDAHO 	AUTO SALES HOMEDALE CHIROPRACTIC CENTER  J. Edward Perkins, Jr. D.C. 111 S. Main 337-4900	CHIROPRACTIC
ADVERTISING YOUR AD HERE! \$10.00 PER WEEK OWYHEE AVALANCHE 337-4681	ROOFING SUTHERLAND ROOFING & STORAGE RE-ROOF AND NEW WORK Composition • Shakes • Wood Leak Repairs • Wind Damage 30 Years Experience • Insured Call Jim 896-4089 or 989-0209 Marsing, Id 83639	BED LINERS <i>Quality work from start to finish</i> Auto Body by Alan Auto Glass • Frame & Unibody Repair • Collision Repair • Custom Paint • All Work Guaranteed Alan Bahem Rt. 1, Graveyard Pt. Rd. Homedale, ID 83628 (208) 337-4837 Mobile 250-4837	AUTO BODY  BOWEN & PARKER CPA's Mikeal D. Parker, CPA • 4 West Owyhee • P.O. Box 905 • Homedale, ID 83628 337-3271 Ron V. Bowen, CPA • 624 16th Ave S. • P.O. Box 41 • Nampa, ID 83653 467-6900	ACCOUNTING
HOME CARE <i>A Special Touch Home Care, Inc.</i> <i>In YOUR Home Care</i> Licensed Staff • Medicare Medicaid • Private Pay 216 W. Idaho PO Box 933 Homedale, ID 83628 (208) 337-5343 	SPORTING CLAYS  IDAHO SPORTING CLAYS 337-4826 3 Miles south on Hwy. 95 from Homedale, turn West on Graveyard Point rd., go 4 miles and turn South on Sage. Go over the first hill and we're on the left. GIFT CERTIFICATES AVAILABLE	HEALTH SERVICES Homedale Clinic Terry Reilly Health Services Richard Ernest, CRNP Family Nurse Practitioner M.D. 1 day a week 108 E. Idaho, Box 1058 Homedale, Idaho 83628 337-3189, Night 466-7869 Additional hours Tuesday evenings	HEALTH SERVICES Marsing Clinic Terry Reilly Health Services Faith Young Peterson, CRNP Family Nurse Practitioner Penny Beach, M.D. 201 Main Street, Marsing, Id. 83639 896-4159, Night 466-7869 Additional hours Thursday evenings	CHIROPRACTIC  MARSING CHIROPRACTIC Jae Saccuman, D.C. "True Your Nervous System" \$25 Visit Special Attention to Injuries Tele: 208-896-5520
RESTAURANT & BAR  Old Basque Inn <i>fine basque and american food</i> Restaurant & Bar 306-10, Veterans St. Jordan Valley, OR 1541 386-2800 open 7 days a week jerkies and real molasses, corners Ask about reserving space for your private parties.	ELECTRICAL CONTRACTOR Hobbs Electric Specializing in commercial & residential electrical contracting Seth Van Wassenhove 1811 Dearborn Street, Caldwell, Idaho 83605 208-455-2634 Phone/Fax 208-941-2349 Cell hobbsselectric@nampa.net	ADVERTISING YOUR AD HERE! \$10.00 PER WEEK OWYHEE AVALANCHE 337-4681	ADVERTISING YOUR AD HERE! \$10.00 PER WEEK OWYHEE AVALANCHE 337-4681	LANDSCAPING LANDSCAPING SPRINKLERS • SOD FENCES • SEAL COATING Financing OAC 859-1830 ask for Alan



THANK YOU

Thank you to everyone, who came to our anniversary party, we appreciate your friendship and it was a great time, hope all of you enjoyed it also. Paul and Jean Zatica

We would like to express our thanks to the good folks of Owyhee County for their support of or recent fundraiser. Homedale Rod and Gun Club

REAL ESTATE

Rent to own. 3 bdrm 2 bth on 5 ac, next to BLM land, call for details, Debbie Campbell UC Stubbs Realty 495-2912 or 859-6346

Unique multi-level home on large lot, 4 bdrms, 2.5 baths, 2208

SPACES FOR RENT HOMEDALE'S NICEST MOBILE HOME PARK

- Spacious single or double wide spaces
- Convenient to shopping, schools & city services
- Clean, quiet family park
- On site manager
- Cable T.V. Available
- Will accept older homes in good condition

(We also have mobile homes for sale ready to move into NOW with low down payment)

Sunset Village

Mobile Home Park
401 S. Main • Homedale, Idaho
See managers space #42
(208) 337-5804
or 884-1700

sq. ft., covered deck, 2-story shop, \$125,000, Remax Adv. 850-4000
Building lots for sale by owner, 5 acre or 2 lots (2.5 acre). Will build to suit. 337-6026 or 495-2486

Newly remodeled 1972 manufactured home, 3 bdrm 1.5 bth w/tipout, quiet neighborhood, 143 5th #8, Wilder 459-2615 make offer.

Sold! After being on the market with 2 other agents for a year, I sold the home at 320 5th Street, Wilder in 2 weeks. If you would like your home sold, please call **Wade Davison** at 841-7876. Re/Max of N/C

Beautiful 5 bedroom, 3 bath home on 2 acres with a view! 4-car garage, 5000 sq. ft. shop w/ office and bathroom. 6 covered carports, coral and barn. Can also purchase 8 adjoining acres. Call Wade Davison at 841-7876. Re/Max of N/C

FARM/RANCH

Alfalfa seed, farmer to farmer, also many grasses, will deliver. Ray Odermott 465-5280

SERVICES

JW Sharpening Service Small Engine Repair

208-337-3556
Pickup Stations:
Marsing: Harvey's Auto Center
Wilder: Wilder Building Center
J.W. SHARPENING
26531 BELLA VISTA DR.
John Deere
to Wilder
Batt Corner Road
337-3556
Homedale Snake River

JJ Excavation and Hauling, TOP SOIL, and gravel delivery, excavator and trucks for hire. Road building, dozer, water truck and road grader. Free estimate. 208-337-4822 or 573-5700.

Dump Truck & Backhoe service, ditch cleaning & demolition. Call Steve at 465-5196 or 371-4285.
Best price in the valley for on-site computer cleaning and repair. Call Tom or Colette at 208-896-4676, Technical Computer Cleaning.

Tim's Small Engine: Call us for all your lawn and garden equipment repair needs. We have replacement parts available for most brands of power equipment. Equipment can be dropped off at the Wilder Building Center or 30916 Peckham Rd. Wilder 482-7461

Owyhee Mountain Lawn Care; fertilizing, field mowing, sprinkler systems, free estimate, call Travis 880-1573

VEHICLES

1987 Ford Ranger, king cab 4x4, hunter green, 6 cyl, runs great, new tires, good mileage, 5 spd trans, reduced to \$3000 337-4681 ask for Cheryl or leave message at 585-9120

1993 Yamaha Seca II, 13k miles, \$2,200 dollars, call 658-6288

1994 Ford Taurus, 4 door, newer transmission installed, runs great, \$2600. Call Dennis or Lisa 459-2181 or evenings 459-8745. Greenleaf

1995 Silver Taurus SHO V-6; 225 horse power; high performance; 5-speed; clean; air conditioning and climate control; CD/cassette/AM-FM stereo; partial leather interior; keyless entry; custom wheels; 4 spare studded tires on wheels for winter driving; \$6000; call 337-5506 and ask for John.

Suzuki 2000 RM250. Never raced, clean, low time. FMF pipe plus extras. \$3,600 firm. Mark 337-4681 days or 249-1089 eves

*Read all about it
in the Avalanche!*

PUBLIC AUCTION

• COMPLETE LIQUIDATION - ABSOLUTE & UNRESERVED •

BOWMAN PRODUCE INC. - MARSING, IDAHO



Forklifts, Trucks, Trailers, Complete Onion Packing Line
*Plus - A Complete Line of Farm Machinery
has been added to this Auction*

THURSDAY, JULY 17 - 10:00 AM

Directions: Downtown Marsing, Idaho

8- FORKLIFTS:

• '92 Toyota 5,000 lbs. forklift, gas or propane dual fuel system, pneumatic rubber, duals, 5,500 hrs.
• '00 Toyota 4,500 lbs. forklift, propane, hard rubber, 2,700 hrs. • '91 Toyota 5,000 lbs. forklift, propane, pneumatic rubber, duals • '90 Toyota 5,000 lbs. forklift, gas, pneumatic rubber, duals, 6,926 hrs. • '83 Toyota 5,000 lbs. forklift, gas, pneumatic rubber, duals 5,512 hrs. • '79 Caterpillar TC30 3,000 lbs. forklift, propane, hard rubber, side shift, • '74 Caterpillar V50B 5,000 lbs. forklift, gas, pneumatic rubber, 4,200 hrs. • '72 Caterpillar V50B 5,000 lbs. forklift, gas, pneumatic rubber, 5.7L, 88,000 miles • '86 Ford L 8000 tandem axle diesel, 3208 Cat, 6spd. air cond. air seat, with / ICHI-BAN 20ft. bed & Harsh 25 ton hoist, (top cond.) • '85 International Conv. tandem axle diesel, Big Cam 350 Cummins, spring susp. (approx. 10,000 miles on overhaul) with / 22ft. metal flat bed • '85 Volvo F6 13 COE single axle diesel, 6 cyl. Volvo, 5spd. with / 22ft. Fruehauf van box • 24ft. 2 axle metal flat bed pup trailer • 21ft. 3 axle dove tail equip. trailer

ADDED TRUCKS & TRAILERS: • '75 Kenworth W900 Conv. tandem axle diesel, Cummins diesel, Σ '83 Excel 42ft. 2 axle spud trailer • '90 Utility 48ft. 2 axle flat bed trailer • 28ft. pull pup trailer
COMPLETE ONION PACKING LINE, & UNION EQUIP: • Bin Dumper, Even Flow bin, & chain elevator • 2-Milestone medium roller sizes & pre pack • Medium belt sorting table with bagging stations, & cull belt • Head sorting roller table, 13 1/2 ft. x 36" with cull belt • Cross-Over roller size 5ft. x 42" • Jumbo sorting table with bagging station • 21ft. x 18" bag belt with 6ft. elevating belt • Northwest 3 to 10 lbs. bagger & scales • Nyssa Machine rotating elec. pallet wrapper • Trinity mfg. Overhead infrared 220,000 btu propane heater, 60ft. • Approx. 300 sack even flow cull bin with / 22ft. x 16" flighted belt feed elevator, and 25ft. x 24" hyd. flighted belt discharge elevator • packing line main switch box • Bin Filler, belt conveyor • 2- suction fans fans, & cyclone collection fan • Hyd. forklift bucket & dump attachment • Liftmaster hyd. bin dumper • misc. onion sizing rings • numerous wall & storage fans • 7- platform scales • lots of belting

ADDED EQUIPMENT:

TRACTORS:

• '93 John Deere 4760 MFWD, Cab/Air, Powershift, 18.4-R42 rubber, duals, weights, 3,918 hrs. (one owner / top cond.) • '67 Allis-Chalmers D17 2wd, gas tractor • Front end loader, (fits D17 tractor)
FARM MACHINERY: • '97 Parma 14ft. ground hog. Smizer front & rear, leveling bar (new cond.) • Miskin 15ft. 3pt. landplane • Hesston model 4900 baler • Hesston Accumulator • Watts 6 bottom hyd. reset plow • Case model 145 4 bottom hyd. reset plow • John Deere model 355 13ft. off-set disc • 15ft. 3pt. PTO rod weeder • Degelman 12ft. front mt. hyd. dozer blade • Rhino 7ft. 3pt. blade • Allis-Chalmers 400 gal. single axle pull type sprayer, pump & 24ft. booms • 7 Shank V Ripper • Farmhand model XL1140 front end loader, 8ft. bucket, forks, & grapple forks • Ace 16ft. ground hog, schmizer front, rear pipe roller, leveling bar • Allis Chalmers 8 row bean planer, fiberglass hoppers • John Deere 7300 MaxEmerge II 6 row air corn planter • Allis Chalmers bean cutter • Lilliston 7200 bean windrower • 8 Row 3pt. bean cultivator • 6 row 3pt. bedding bar, 15ft. • Sprinkler pipe trailer • 200 gal. front mt. sprayer • Ace 150 gal. SS 3pt. sprayer, 30ft. booms, PTO • MF 10ft. rotary hoe
ADDED POTATO HANDLING EQUIPMENT: (2) - 40ft. Spudnik model 800 super tube pilers, 24" flighted belt, 3 phase • Spudnik 30ft. straight boom piler, elec./ hyd. 30" outriggers, stinger • Spudnik 30ft. straight boom piler manual hyd. 24" • Spudnik dirt eliminator, 36" • Spudnik dirt eliminator, 30" with / stinger (new star rolls) • Spudnik 36" x 10ft. elevator • Spudnik 20ft. seed tube, elec.

SHOP EQUIP. & MISCELLANEOUS: MillerMatic 200 wire feed welder • Makita chop saw, w / feed rolls • Large stationary air compressor, 220 single phase • Sanborn 230v air compressor • Miller Bobcat portable welder generator, 16hp. Onan, 130-240 • Belair portable gas air compressor • Delta post drill, 1/2" • Hyd. shop press • bench grinders • hand grinders • Acetylene torch & gauges • Forney 180amp stick welder • 2- 137 gal. oil tanks & stands • Battery charger • misc. jacks, & stands • misc. hand tools • Delta table saw • Craftsman radial arm saw • 4,500 lbs. pallet jack • portable air compressor • 2- steel dock ramps • misc. fuel tanks • Pallet of white masonry brick • Ace 150 gal. SS 3pt. spray tank, PTO, 30ft. booms • 178 gal. propane tank • approx. 25 single phase & 3 phase elec. motors, æ hp to 5 hp, several gear head motors • misc. elec. cord • 9- Antique hand carts • elec. A-O Smith gas pump • 100 gal. fuel tank w / 12v pump • 5 ton engine hoist • several space heaters • tire rack • extra forklift tires & parts • chains & binders • lots of shop brooms, scoop shovels, forks, exc. • misc. plywood, & lumber • misc. steel • Honda gas pressure washer • 6- Motorola 2-way hand held radios •

Auctioneers Note: After 42 years in the onion packing business, Bowman Produce Inc. has decided to discontinue their onion packing operation. This is a clean and well maintained line of equipment. - Equipment has been added to this Auction from several bank, plus surplus potato handling equip. from the Simplot Co.
All added equipment will be sold **No Minimum & No Reserve.**

Real Estate: For Sale by private treaty. Over 75,000 sq. feet of storage, and warehouse space in several buildings. Excellent downtown location with office & scales.



Sale Conducted by:

Western Auction Company

www.westernauctionco.com

1-800-398-7115



Kurt Weitz
208-454-0922

Dwayne Skogsberg
208-867-1838

Hardy Ward
TOLL FREE @ 1-800-398-7117

Sid Maxwell



COLDWELL BANKER

ASPEN
GEORGE WILSON
JOHN CONTI
STAN CAPOUCH

896-5312 • 890-4770 • 880-7829 • 880-2414
View Properties At: www.idaholand4u.com

GREAT SET-UP FOR THE LARGE FAMILY

5 Bedroom, 2 Bath. Could be 7 bedroom in a quiet neighborhood near town. Fenced yard, many extras. #98123771 ~~\$104,000~~
REDUCED TO \$89,000. OWNER MUST SELL!

SNAKE RIVER VIEW

Hill top 5 Acres. 2400 sq. ft. 4 bed/ 2 bath home. Sun Room. Many Extras, View of the Snake River. Large Great Room. #98116161 **\$264,000**

NEXT TO BLM. HORSE PROPERTY.

2 car Garage & Shop, 2 bay horse barn, 3 stall horse barn & Tack Room. 5 bedroom, 3 bath 2400 sq. ft. home. Next to BLM. #98116694 **\$129,000**

BEST BUY OF THE MONTH

3 Bed / 2 Bath. Large garage. Fully fenced. Walk to Grade School. 1/3 mile to Snake River on Cul de Sac. #98126832 **\$79,500**

2 ACRE HORSE SET UP ON SNAKE RIVER

1750 sq. ft. 3 bed., 2 bath. Large Tack Room, River Frontage, Irrigation, Hay storage. #98126172 **\$152,000**

SOUTHSIDE ROAD 2 ACRE HORSE RANCH

4 bedroom, 1 bath total remodeled. 1800 sq. ft. Outbuildings, Fenced pasture, Irrigation. Office could be 5th bedroom. Nice landscaping. #98129458 **\$149,000**

FOR RENT OR LEASE OPTION

3 Bed 2 Bath near new upgraded MF Home in Snake River RV Park. Furnished - Stove, Refrigerator, Washer, Dryer. Covered Patio and Storage Unit. \$595/Month



HOMEDALE OFFICE

Lori Rasmussen
337-4593

Licensed in Idaho and Oregon

FEATURED HOUSE OF THE WEEK



Great starter home or for the downsizing family. This 2 BR has big rooms & quality upgrades. New vinyl siding, windows and roof in '97. Corner lot. Washer, dryer, refrigerator & stove stay. Priced at \$60,000.



Snake River Mart



MARSING, IDAHO

HOURS: Mon. - Sat. 6:00 a.m. to 10:00 p.m. - Sunday 7:00 a.m. to 9:00 p.m.

Blade Cut Pork Chops



\$1.69 lb.

Eye of Round Steak



\$1.79 lb.

Seeded Watermelon



23¢ lb.

Large Hass Avocados



\$1.39 ea.

Eye of Round Roast



\$1.79 lb.

Gem Meat Co. Chorizos



\$2.79 lb.

Clamshell Strawberries



2 for \$3

Dole Salad Classic Romaine



\$1.29 ea.

Center Cut Pork Chops **\$1.89** lb.
16 oz. Western Family Sliced Bologna or Salami **89¢** pkg.
12 oz. Western Family Sliced Bacon **\$2.19** pkg.

Cube Steak **\$2.19** lb.
3 lb. Western Family Link Sausage **\$3.69** pkg.
12 oz. Western Family Natural Sliced Medium Cheese **2 for \$5**

1 lb. Mesh Bag Pistachios **\$3.39** ea.
Broccoli **79¢** lb.
Fresh Cilantro **39¢** bu.

Fresh Limes **10 for \$1**
Red Potatoes **39¢** lb.
Fresh Green Cabbage **3 lbs. for \$1**

Western Family Ice Cream



\$1.59 ea.
Half Gallon Asst'd.
16 oz. Western Family Frozen Corn or Peas **99¢** ea.

Western Family Green Beans or Corn



3 for \$1
14.5 to 15.25 oz. Can
8 oz. Western Family Chilled Yogurt **3 for \$1**

Western Family Decorator Towels



2 for \$1 for Single Roll
Western Family 2 Ply Bath Tissue **79¢** pkg.

All Varieties Coca-Cola Products



\$3.49
Fridge Packs
10 to 12.25 oz. Frito Lay Ruffles **2 for \$5**

Western Family Coffee



\$3.99 ea.
36 to 39 oz.
24 oz. Western Family Beef Stew **3 for \$5**

Western Family Tuna in Water



49¢ ea.
6 oz.
64 oz. Western Family Catsup **\$1.99** ea.

Western Family Soda Pop



\$1.99 ea.
12-12 oz. Cans Asst'd.
Western Family Asst'd. Foil Mixes **39¢** ea.

Western Family Frozen Orange Juice



89¢ ea.
12 oz.
36 ct. Western Family Frozen Orange or Fudge Bars **\$3.99** ea.

ONE COUPON PER VISIT - PER ITEM ONLY. THANK YOU!!

COUPON
Snake River Mart Coupon #5001
Western Family
Corn Flakes
\$1.29
24 oz.
Limit 2 Expires 07/15/03

COUPON
Snake River Mart Coupon #5002
Western Family
Mac & Cheese
6 for \$1
7.25 oz.
Limit 12 Expires 07/15/03

COUPON
Snake River Mart Coupon #5003
Western Family
Mandarin Oranges
3 for \$1
11 oz.
Limit 6 Expires 07/15/03

COUPON
Snake River Mart Coupon #5004
Western Family Fancy
Tomato Sauce
6 for \$1
8 oz.
Limit 12 Expires 07/15/03

WE RESERVE THE RIGHT TO LIMIT QUANTITIES AND CORRECT PRINTED ERRORS • PRICES EFFECTIVE 07/09/03 thru 07/15/03