

# The Owyhee Avalanche

VOLUME 19, NUMBER 8

HOMEDALE, OWYHEE COUNTY, IDAHO

SEVENTY-FIVE CENTS



**Trojans hold Huskies  
in double o.t. thriller**  
*page 10*

**Judge denies government's  
summary judgment**  
*page 7*

**City employees donate  
to injured officer**  
*page 3*



## Homedale chamber elects new president

*4-H Teen Council gives presentation*

A new president will preside over the Homedale Chamber of Commerce this year after Robin Tolmie, co-owner of Tolmie's Hardware and Appliance, was elected during a meeting at the Owyhee Lanes Restaurant last week. The 4-H Teen Council gave a presentation of their trip to the Teen Council Ambassador's meeting earlier this year and the chamber heard a presentation from Craig Bronson, Community Crusade President for Community Crusade Against Drug Abuse Inc.

Members from the 4-H Teen Council, Stephanie Hunt, Debbie, Jessica and Veronica Ellis offered a display of pictures to the chamber and explained what they had learned during their attendance at the ambassador's meeting. The council reported that they will again hold a Get your Goat fundraiser in May or late April despite a few complaints of the program last year.

They reported that it was due to the funds raised from the goat fundraiser that allowed them to travel to Boise for the

— to page 4



### "Don't Blow it, Don't do Drugs"

*Ricky Miller, eighth grade student at Marsing Middle School, blows a bubble during a "Don't Blow it, Don't do Drugs" bubble gum blowing competition during Red Ribbon Week in the school district last Tuesday. The district celebrated the annual event with a variety of activities and guest speakers including Dan Heidt, crisis response expert on preventing school violence to grim reaper day.*

## Engineer updates city council on sewer project

Marsing City Engineer Amy Woodruff gave an update presentation to the city council last week on a sewer rehabilitation project the city has been focusing on for several months. Recently the Department of Environmental Quality toured the city's waste treatment facility as part of a Total Maximum Daily Load (TMDL) document proposed by DEQ. A public meeting on the TMDL was held at the University of Idaho Owyhee County Extension Office on Feb. 4<sup>th</sup> where Woodruff said the subject of the Marsing facility was touched on briefly, but the focus of the discussion was on the ranchers and farmers in the watershed area and how the TMDL would effect them.

Woodruff told the council that the project is proceeding as planned and that DEQ

approval has been obtained for the plans and specifications, but the approval from DEQ for the sludge application is not available as of yet.

"I expect the letter as early as next week," Woodruff reported to the council. "As soon as we have the land application approval, an advertisement will be prepared, and the bid process will begin."

The public comment period for the TMDL is still open until Feb. 28. Woodruff reported that she plans to comment on the document by a letter from the mayor and the council. She said the letters would be available at the next council meeting.

The TMDL document encompasses the whole watershed area on the Snake River from Swan Falls dam to the Hells Canyon area.

## Local gas prices climb as wholesale costs increase

As the world waits in a high alert for terrorists and the pending attack on Iraq, wholesale fuel suppliers are flexing their muscle nationwide and consumers are feeling the sting of the punch at the gas pump. Local prices climbed from an average of \$1.43 per gallon last week to nearly \$1.70 per gallon on Monday.

Local gas station operators said Monday the shift in fuel prices to dealers between 6 p.m. Sunday, and 12:01 a.m. Monday were some of the sharpest they had ever seen.

Locally, prices at the pump have gone up anywhere between five cents and 10 cents since Friday.

In Idaho, Monday's average price at the pump was \$1.57, compared to \$1.43 a week ago,

and \$1.20 a year ago.

Cindy Sims, manager of Jackson's Texaco in Homedale — to page 4



### Rising fuel prices

Jackson's Texaco Manager Cindy Sims adds three cents to already increasing gas prices last Friday.

## Basque dancers to perform in Homedale

The Txoko-Ona Basque Club will entertain the public with traditional Basque dance styles on March 8<sup>th</sup> at the Armory in the Owyhee County Fair Grounds. The event is being held to help raise funds for a building fund for the club. The goal

of the club is to build a local Basque Center in the Homedale area.

The doors will open at 6 p.m. when the Caldwell Basque Dancers and the Oinkari Basque Dancers of Boise with Jimmy Jausoro and Juan Zulaica will give a

Basque performance.

After the dancers perform, an open dance will be held with music from the Upper Classmen Band from Parma. A silent auction will be held during the evening with all of the proceeds going to the building fund.



# Marsing seniors purchase meals on wheels van

With the assistance of the Marsing Disaster Committee, the Owyhee County Commissioners and a helpful car salesman, the Marsing Senior Citizen's Center now has a new van to deliver meals on wheels and assist in transporting senior citizen's to doctor appointment and many other places they may not be able to get to on their own.

Senior center director Silvia Silverthorne said Thursday that the center has a larger bus, but the expense of fuel kept the center from using it as often as they needed to.

The van, a 1994 Dodge caravan purchased from River Country Trucks and 4x4's Inc. in Marsing was purchased by Jerry Roberts, River Country Trucks owner, at a vehicle auction for a reduced amount. Silverthorne said Peggy and Merrill Tallman approached the disaster auction committee and request assistance with the purchase. The committee gave the center \$2,000 toward its purchase. The center only needed to add about \$1,300 to

clinch the deal.

"The county commissioners agreed to pay for the licensing and insurance so with the help

of many people we were able to make our dream a reality," Silverthorne commented. "This is really a plus for this

area. Now we have a way to transport people to doctors' appointments. People who need to go to the hospital who

don't have transportation we can take them. We will take people to fill prescriptions and the meals on wheels for people 60 years old and older and disabled we will deliver to. We will also be able to deliver for the 'grand meals,' which is for people under 60 who are temporarily disabled. The grand meals are the same as the meals on wheels, but for people who can't get around temporarily and are under 60 years old."

Silverthorne said by getting the van, it will free up the larger bus to be used for picking up people within a five mile radius of Marsing and bringing them to the center for meals and activities. She said it would also be used for a new support group being planned at the center.

"We are planning to use the bus for local shopping trips in Marsing and Homedale and we will also be meeting up with the bus from the Parma center for shopping trips to Ontario, Caldwell and Nampa," Silverthorne said. -CPB



## Senior van

Larry Myers, right, accepts a check for \$2,000 from Marsing Fire Chief Roman Usabel, middle, as Steve Thomas looks on. Usabel presented the check to the Marsing Senior Citizen's Center for assistance in purchasing a van for its meals on wheels program.

## 100 hours of service

Mary Ann Pegram was honored with a certificate and a potted plant for giving 100 hours of service to the Homedale Library. Mary Ann said she enjoys spending most of her free time at the library.



It's Your Special Year

2003

GRADUATING SENIORS

Be at the top of the class with classy graduation announcements. come see our wide line of graduation supplies by

stylart®

The Owyhee Avalanche

337-4681

Kate's Place  
Hair - Perms - Colors

Walk-In or By Appointment  
Across from Tamura's on Hwy 95



NOW OPEN!

Between Homedale & Wilder  
on Hwy 95

337-6294 • 869-8699

Special:  
Salt City Lotion &  
Candle Gift Baskets  
15% OFF!



# City employees donate to injured officer

Employees of the City of Homedale from the city clerk to the city maintenance crew donated their accrued sick leave time to an officer who was injured when a tractor battery exploded in his face.

This is the second fund-raising effort on Austin's behalf.

Homedale Police Officer Jamie Austin has lost some of his sight in one eye and the majority of his sight in the other. Homedale Police Chief Jeff Eidemiller said the doctors have not confirmed whether Austin would be permanently blind but he said everyone is thinking positive. Eidemiller said he is currently working with a reduced work force and

several reserve officers have been filling in while Austin recuperates.

City Clerk Pam Dugger told the city council during a regular meeting Wednesday night that Austin's current sick leave benefits have expired. She said the city employees would like to offer their sick leave pay to help the officer.

"Everybody accrues eight hours of sick leave per 28 day rotation," Dugger said Thursday. "It can be used strictly for sick leave, but everybody has a bank where those hours accrue. Essentially there is a liability line item that reserves the money for sick leave. What the employees have requested is to donate to

Jamie's fund, to his bank, a portion of their sick leave hours."

Dugger said since Austin's sick leave hours have expired, he would be without an income of any kind from the city. She said since Austin was injured on his own time and not while he was on duty, the city does not carry any kind of disability insurance to cover him.

"I think all of the employees are anxious and want to assist Jamie and his family in any way that they can," Dugger said. "This is an opportunity for them that they felt would help him the most. Because it is unknown when Jamie can return to work, we just wanted to do what can for him."

The city carries major medical and life insurance, but does not carry disability insurance. She said in the life insurance policy there is a benefit that would help the officer if he should loose his entire sight in one or both of his eyes. But she said it is not disability coverage.

The city employees are planning a large fundraiser for later this spring and Dugger said she hopes to be able to release that information next week. -CPB



### Officer assistance

Homedale Reel Time Video store owner Tanya Krueger and Homedale Police Officer Jamie Austin are pictured during a fundraising effort for Austin who received severe injuries to his eyes when a tractor battery exploded in his face. Krueger raised over \$900 for the officer's mounting medical bills. Krueger said she was amazed how everyone in the community came together with donations and attending the fund-raiser last weekend.

## Pinochle tournament to be held for Marsing class

A pinochle tournament is planned to be held on Feb. 28<sup>th</sup> at 6:30 p.m. to help raise money for the 2003 senior class's drug free graduation party in May.

The tournament requires a \$10 entry fee per person with assorted prizes for the winners. It will be held at the Marsing Elementary School multi-purpose room. To reserve a seat call Audrey at 455-9705 or Nick at 896-4777.

## Customer Appreciation Sale

**DOOR PRIZES**  
**GRAND PRIZE - DVD PLAYER!**  
**FREE COFFEE & DONUTS**

**FREE LUNCH! 11 AM TO 2 PM**

**THURSDAY 2/20- JORDAN VALLEY STORE**  
**FRIDAY 2/21- HOMEDALE STORE**

**Hand Lever Grease Cartridge Gun**  
715-1241  
**\$8.99**

**WD-40**  
11 OZ.  
**\$2.49**

**CAMPBELL HAUSFELD 4.5 HP 20 GAL AIR COMPRESSOR KIT**  
VS623199AJ  
**\$429.99**

**NAPA 3.5 Ton Service Jack**  
791-6420  
**\$179**

**Chevron Delo Oil**  
One-gallon 15W40, CHV GAL15W40  
Mfr. Suggested Price \$7.49  
**\$6.49**

## 3-Day Farm & Ranch Sale

Prices Good Thursday, Friday & Saturday  
Feb 20, 21, 22 Only

**70% OFF ALL FILTERS!**

Ask about our FREE FILTER SURVEY!  
**Tools & Equipment at the BEST PRICES OF THE YEAR!**

## NAPA BATTERIES

**NAPA POWER 65 MO. BATTERY**

W/EXCHANGE	<b>\$34.99</b>
<b>HD FARM BATTERY</b> #7238, #7239 W/EXCHANGE	<b>\$59.95</b>
<b>RV MARINE DEEP CYCLE</b> #8240 W/EXCHANGE	<b>\$49.95</b>

**OWYHEE AUTO SUPPLY**  
4 E. IDAHO, HOMEDALE 337-4668

**NAPA AUTO PARTS**

**JORDAN VALLEY AUTO SUPPLY**  
HWY 95, JORDAN VALLEY 586-2613



From page 1



**4-H Teen Council**  
Members from the 4-H Teen Council, Stephanie Hunt, Debbie, Jessica and Veronica Ellis offered a display of pictures to the chamber and explained what they had learned during their attendance at the ambassador’s meeting.

✓ Chamber

meeting. The group raised over \$1,000 in the event.

The council suggested that if anyone had problems with receiving the goat they should contact the council to have their name added to a list and they would not bring the animal to their business. The chamber told the group that they felt the fundraiser was a success and they would support the cause.

Bronson introduced a program he is offering local schools, which includes motivating and supporting

youth to “say yes to life.”

Bronson told the chamber that Community Crusade against Drug Abuse, Inc. has a vision for the youth of Idaho on how their efforts will improve local schools, organizations, institutions, parents, residents and especially the youth.

“Our goal is to educate, motivate, empower and encourage our youth,” Bronson told the chamber members. “The nonprofit organization uses a three-step process to teach students the importance of making positive choices when they come face-to-face

with peer pressure, drug abuse and other high risk behaviors.”

In April, Bronson said he plans to bring his presentation to Homedale in the form of a MXPower Team program. He said the team uses motocross riders and equipment to teach children the advantages of staying drug free.

“We have pro-riders that come in and do motivational talks,” Bronson told the members. “They are high school seniors and first and second year college students. We want it to be youth driven. We don’t want old guys with gray hair who won’t connect with the kids.”

Bronson said the Marsing School District has recently adopted the program and teachers will take time to teach from a curriculum book offered by Bronson’s crusade.

The chamber will hold its next meeting on March 13 at noon at the Owyhee Lanes Restaurant. Tolmie said they plan to discuss the upcoming car rally, a pine derby event and the election of officers.

✓ Gas

said she changed the prices nearly daily last week

“We never know from day to day what it is going to be,” Sims said as she changed the price marquee another three cents Friday morning. “The general consensus seems to be a great deal of concern that the price will keep climbing. It has made changes in my lifestyle. I used to make trips to Caldwell several times a week for

shopping and such, now I am only going maybe once a week.”

In Idaho, according to the AAA, the current average on Feb. 17 in Idaho is \$1.629 for regular unleaded gasoline. The average on Feb. 16 was \$1.618 per gallon, \$1.456 a month ago and \$1.178 a year ago.

The highest recorded prices in Idaho for regular unleaded gas was on Oct. 24, 2000 when it climbed to \$1.748 for an average.

Don't Let  
**TAX TIME**  
put the  
**SQUEEZE**  
on you.

Get relief by letting us answer all of your tax questions and concerns. We offer federal and state income tax preparation and accounting services for individuals and businesses. Find out how recent tax law changes affect you and what you can do to decrease your tax burden.

- **Electronic filing - get your refund in 1/2 the time!**
- **Tax Planning • Late returns/prior years**
- **Year-round service • IRS representation**
- **Convenient appointments**
- **Reasonable rates • Fax service**
- **Computerized accounting**

**BOWEN & PARKER**  
C.P.A.'s **CHARTERED**

**Homedale**  
Mikeal D. Parker, CPA  
4 West Owyhee  
**337-3271**

**Nampa**  
Ron Bowen, CPA  
624 16<sup>th</sup> Ave. S.  
**467-6900**

**Hours: Monday-Friday 8:00 a.m. to 6:00 p.m.**  
**Saturday 9:00 a.m. to 2:00 p.m.**  
*Evening & Weekend Appointments Available*

**The Owyhee Avalanche**

P.O. BOX 97 • HOMEDALE, ID 83628  
PHONE 208 / 337-4681 • FAX 208 / 337-4867  
E-mail [avalanche@citlink.net](mailto:avalanche@citlink.net)

U.S.P.S. NO. 416-340  
Copyright 2003—ISSN #8750-6823

JOE E. AMAN, *editor-in-chief and publisher*  
CHERYL PETERSON BEESON, *reporter*  
JENNIFER STUTHEIT, *office*  
ROBERT AMAN, *composition*

Published each week in Homedale, Idaho by Owyhee Avalanche, Inc. Entered as Periodical, paid at the Post Office at Homedale, ID under the Act of March 3, 1879. POSTMASTER: send address changes to THE OWYHEE AVALANCHE, P.O. 97, Homedale, ID 83628.

**Annual Subscription Rates:**

Owyhee County.....	\$31.50
Canyon, Ada, Malheur counties .....	36.75
Elsewhere.....	40.00

(Includes sales tax where applicable)

**Deadlines**

**Classifieds**  
Monday noon the week of publication

**Legal notices**  
Friday noon the week prior to publication

**Display advertising**  
Friday noon the week prior to publication

**Inserts**  
Friday noon the week prior to publication

**River's Edge  
Nursery, LLC**

Pre-Season Special!

- Instant Shade
- Great Windbreak

Limited quantity of extra large and tall Theves Poplars

15' tall, 4-6" diameter - \$32.00  
12' tall, 2-4" diameter - \$25.00  
Planting service also available.  
OFFER GOOD THROUGH MARCH 2<sup>nd</sup>.  
**Come see us at**  
**18039 Fish Road**  
**Wilder, Idaho**  
(1/4 mile So. of River Bend Golf Course)  
Open Saturdays & Sundays 8-5

**Graduation  
Announcements  
by stylart®**

Be at the top of the class with classy graduation announcements by Stylart. We also carry a complete line of graduation accessories.

*Come in today!*

Many announcements include photos!

**The Owyhee Avalanche**

**337-4681**





Grand opening

Shoppers search for bargains at the Old West Dollar Store in Marsing during its grand opening of its new store. Raffled gift baskets were given to Dennis Lyons, Randall Andersen of Marsing, Evelyn Felty of Homedale and Cassandra Gril of Marsing.

American Legion signs for exclusive beer rights

An ongoing battle of who will be allowed to sell beer during the annual Owyhee County Fair and Rodeo may have come to a close, at least for the next five years. The American Legion and the county fair board entered into an agreement late last year; giving the Legion “exclusive” rights to all beer sales for the next five years.

The agreement, dated Nov. 7, 2002 signed by former fair board chairman Bill Watterson and then vice chairman Gwen Miller, and by Jerry A. Pierce Jr., American Legion Post No. 22 Commander, states that “the board reached an oral agreement with the Legion concerning operation of the beer concession associated with said Fair which the parties hereto now desire to memorialize by way of this agreement.”

Exclusive rights were given to the legion as part of the agreement “to operate and sell beer concessions at the Owyhee County Fair for a period of 5 years beginning with the 2003 Fair and ending with the 2007 Fair.”

As part of the agreement, the board stated that they would determine the brand of beer that would be sold and the legion would only be allowed to sell the board’s chosen brand. The legion agreed to obtain a comprehensive damage and bodily injury liability insurance policy in the name of “Owyhee County as an additional insured for a minimum of \$1 million.”

A fee is not stated in the agreement, but it says that the board will determine the fee to be charged on an annual basis. “The legion agrees to pay said fee in the amount determined by the board, and the legion acknowledges this fee may be increased or decreased by the board in its sole discretion.” -CPB



Dollar craze

A one-dollar store opened in Homedale in August in the former Les Schwab building on East Idaho Avenue. The store joined a second store located in Marsing, which held a open house last weekend.

**BANKRUPTCY  
CHAPTER 7 &  
CHAPTER 13**

**MURPHY LAW  
OFFICE  
(208) 453-9700**

THINKING HOME IMPROVEMENT?

One of the best investments in your home can be installing a high-efficiency Bryant heating & cooling system. It increases your comfort year-round & can save you money.



**THINK BRYANT**



Residential Commercial

Jerry Perkins  
**Homedale • 337-5812**

**573-1788 • 337-3674**

**24 Hour  
Emergency Service**



Ben & Lori Badiola / Owners

Thanks, Everyone!

**The Owyhee Cattlemen’s Association would like to thank the Jordan Valley Rodeo Board for their time and effort as well as the many businesses and individuals who gave their sponsorship and support to Jordan Valley’s “Ride & Rope” fund raiser of 2002.**

Stone House Saddlery  
Farm Credit Services  
SSI Food Service Inc  
Budd-Falen Law Offices  
Washington Mutual  
J C Watson Company  
WSI Western Stockman’s  
YMC Inc. Mechanical Contractor  
Cennex Harvest States  
Superior Livestock Auction  
Trautman Lawn and Landscape  
Pepsi Cola Bottling Co.  
Les Schwab  
Gentry Ford Sales  
McGinn Bros Trucking  
Simplot Shared Services  
Auto Body By Alan  
Paul’s Markets  
J V Club and Cafe  
Western Ranch Mgmnt and Realty  
Cast In Place, Inc.  
J V Veterinary Service  
06 Livestock and Forest Fretwell  
Burgess Angus  
Mackenzie Ranch Quarter Horses  
Action Chrysler-Dodge  
Treasure Valley Livestock  
Heritage Lumber  
Jump Creek Lumber Co.  
Homedale Feed  
Dan Wiebold Ford  
Grenke Brothers  
Budd Landon Masonry Contractor  
D and B Supply  
Intermountain Community Bank  
Owyhee Auto Supply  
Matteson’s Owyhee Motor Sales  
Farm Bureau Insurance

Cliff Bentz  
Haken Insurance Agency  
Idaho Cowboy Supply  
Paul J Arritola  
Anipro-XF Enterprises Inc.  
Hollingsworth, Inc  
Nampa Livestock Markets Inc.  
Duncan and Adene Mackenzie  
Gem State Communications  
Ida-Black Angus  
Hyde Ranch Angus  
Poole Oil Inc./Poole Country Store  
Rogers Wheel Alignment  
Flying V Enterprises  
Pat and Danice Payne  
Marsing Hardware Inc.  
Zions Bank  
Al Lowry and Sue Opie  
U S Bank  
Warrinton Irrigation  
Farmers and Merchants State Bank  
Ripley Doorn and Company  
Oregon Trail Livestock Supply  
Raburn Vermeer Sales  
Nyssa Tractor Salvage  
Farm City Livestock Supply  
Arock Grange  
Bowen and Parker CPA’s  
Ontario New Holland  
Ken’s Custom Tent and Canvas  
Fort Dodge (Glenn Koch)  
Madariaga, Inc.  
Agri Beef Co.  
Jim’s Texaco/Mrs Z’s  
Yamaha Sports Center  
Stringer’s Diamond Cut Buckles  
Owyhee Publishing  
Easterday Transportation LLC

These funds are used to protect the property rights of landowners throughout Owyhee County and to aid the Owyhee River Defense Fund.

We wish continued success to the Jordan Valley fundraiser.

Gratefully, Owyhee Cattlemen’s Association.







ASK  
BETTY

Make it your way!

Dear Betty,

There’s a lull in our activities right now, so I thought I’d invite my neighbors and their kids over for a casual evening. Do you have any good ideas for what to serve?

Lorain, Ohio

Add pizzazz to dreary midwinter with a Make It Your Way gathering. Did you know there’s actually a My Way day? You can celebrate it with your neighbors and kids by setting out the fixings for make-your-own pizza, then topping it off with make-your-own sundae bar.

For the pizza buffet:

Let everyone get their fingers gooey making their own size pizza dough from scratch, or use refrigerated or frozen pizza dough or crusts, ready-to-eat pizza crusts, plain rounds of focaccia or even pita rounds (for mini pizzas).

Slather on the pizza sauce, then let each person create their personal pizza with shredded mozzarella, rounds of fresh mozzarella, goat cheese, pepperoni, Italian sausage, Canadian bacon, chopped black olives, onions, green peppers, mushroom, fresh basil leaves, sliced tomatoes-or whatever toppings your family loves. For large pizzas, guest can “customize” their own section.

For the sundae bar:

Set out tubs of chocolate and vanilla ice cream-or you may want to pre-scoop ice cream balls and put them on a cookie sheet in the freezer until party time.

Include a wide selection of “base” toppings, like hot fudge, butterscotch, caramel and crushed strawberries. (Buy frozen strawberries, thaw and crush with a little sugar.) Maple syrup, Creme de Menthe and Kahlua also may appeal to grown up tastes.

Add the crowning touch with chopped nuts, coconut, crushed peppermint candies, sliced bananas, chocolate and white chocolate chips, crushed or chopped up candy bars, and M and M’s.

Balance all of this My Way celebrating with a rousing game of team charades to wrap up the evening.

Dear Betty,

How do you know when pears are ripe?

Princeton, W. Va.

We’re right in the heart of winter pear season with lovely Comice, Bosc, Anjou and even Bartlett pears available in the supermarket. Most pears need to ripen before eating.

Since they come in a rainbow of colors from apple green to lemon yellow to golden brown and even rosy red, color isn’t always the best way to determine if they’re ripe. So press the pear gently at the stem end. If it gives slightly, the pear is ripe. You can enjoy the luscious, creamy fruit right away, or keep it in the fridge for a day or two.

To help pears ripen faster, put them in a plastic bag with a banana or apple.

For more great ideas, visit my Web site: BettyCrocker.com

Questions? Toll-free: 1-888-ASK BETTY

Write: “Ask Betty Crocker,” One General Mills Blvd., Minneapolis, MN 55426

FROM THE OLD

1940’s Photo album



Homedale State Bank, Peck Building, Main and Idaho

According to Marilyn Burke of Meridian, these ladies are identified as Homedale’s first basketball team, organized in 1910.

Left to right, back row: Hazel Sample, Melvina McDowell, Julia Sample, Melba Fletcher. Seated: Electa McDowell, and unidentified.

Taxpayers can file on web

File 40EZ for free through Tax Commission Web site

Taxpayers who are eligible can file Idaho’s short income tax form for free through the Idaho State Tax Commission’s Web site. The Form 40EZ can be found by going to <http://www2.state.id.us/tax> and clicking on the “E-File” icon. Those who don’t have a computer can use one for free at a Tax Commission office or at many public libraries.

The electronic short form is targeted to taxpayers who lived in Idaho the entire tax year; previously filed an Idaho income tax return; only have income from wages, tips, unemployment and interest; and do not have dependents or credits.

Taxpayers who don’t qualify to file a Form 40EZ can use the Web site to find Web-based companies or local tax preparers who offer electronic filing.

Electronic filing produces quicker refunds. On average, refunds for Idaho returns filed electronically normally take about 10 days to arrive, compared to six to 10 weeks if filed on paper. The e-filing programs do the calculations automatically, increasing the accuracy of those returns. They also provide a confirmation number and a printable copy of the return for record keeping.

Taxpayers can have a refund deposited directly into their bank account. If they owe tax, they can use a credit card to pay online by clicking on the Tax Commission’s “Electronic Payments” button.

Nearly 50,000 Idaho income tax returns have been filed so far using electronic filing. “This is a 117% increase over last year, “ said Steve Miller, administrator of the Tax Commission’s Revenue Operations Division.

For more information about Idaho taxes, call the Idaho State Tax Commission at 334-7660 in the Boise area or toll free at 1-800-972-7660.



“Serving Owyhee & Canyon Counties Since 1952”

**Owyhee & Canyon County’s only locally owned mortuary**

<b>HOMEDALE</b> 27 E. Owyhee 337-3252	<b>CALDWELL</b> 624 Cleveland Blvd. 459-3252
---	--

Back Row: Kenneth Gordy, Jim McMillan, Dick Whitted, Mahlon Brown, Alfreda Brown  
Front Row: Leonard C. Flahiff, Karen Flahiff

   **ACCESSIBLE**  
Everything On One Level

**ALUMINUM DONATIONS WANTED**

Veterans Aluminum Drive

The local Veterans of Foreign wars organization is continuing it’s aluminum collection efforts. Money for the sales is used for the promotion of programs that aid veterans in need, promote patriotism, and support local school Americanism program. Individuals or organizations may support by dropping off aluminum at collection boxes at Paul’s Market in Homedale or by the Zion Bank in Wilder. If you have cans to donate or if you are a farmer with old aluminum pipe we would be glad to pick it up.

For information call Dick at 896-4465 or Larry 880-1684



# Judge denies government’s summary judgment

## U.S. Attorney’s synopsis included

During a conference call with the US Court of Federal Claims in December, Judge Loren Smith made a decision that will allow landowners to present evidence to the court that the government’s actions caused the taking of Nevada rancher Wayne Hage’s property. That opinion was finally recorded on Feb. 6<sup>th</sup>.

The call came about on Dec. 11 when Smith indicated he would be denying the government’s latest Summary Judgment motion in a forthcoming written opinion. The government filed its motion arguing in part that the case should be dismissed because Hage did not have access (via the grazing permit) to the stock water rights and ditch rights the court determined Hage owned in its January 29, 2002 decision, “therefore these rights are noncompensable.”

“The court disagreed finding the property rights owned by Hage were pre-existing to the permit system and ‘the court is not of the opinion that lack of a grazing permit that prevents access to federal lands can eliminate Plaintiff’s vested water rights and ditch rights,” David Holmgren, Nevada Live Stock Association, Vice-Chairman said. “The court continued, “The value of these rights, if any, is something to be determined at trial.”

The litigation, Hage v. U.S. was originally filed in 1991 when the U.S. Forest Service attempted to take Hage’s water rights and grazing allotments by canceling his grazing permit. Hage has argued that his property rights in water and forage are not dependent on federal grazing permit.

In a synopsis obtained by the Owyhee Avalanche shortly after the December meeting from the Bureau of Land Management, Dorothy Burakreis, attorney for the United States said “the meeting was a status conference call with Judge Smith to discuss further proceedings and his decision, not yet issued, on our motion for partial summary judgment (whether the denial of access by cattle to stock waters and forage on federal grazing allotments as a result of the withdrawal of the grazing privilege has caused a taking of plaintiffs’ (Hage) stock waters and any forage rights on federal lands.)”

“He indicated he would deny our motion because the grazing permit postdates the 1866 Act re-acquisition of water rights and ditch rights,” Burakreis stated in her synopsis. “I reminded him that our motion was directed specifically to the grazing privilege, which predated the 1866 Act, under the Supreme Court’s many opinions. He did not respond, however, to my comment.”

“As to further proceedings, Plaintiffs’ counsel requested that the court set a trial date and indicated that his proof would likely require about four days,” Burakreis continued in the document. “I said that we couldn’t estimate trial time since we didn’t know what issues would be tried, given the numerous issues set forth in plaintiffs’ complaint, or even the dates of alleged taking(s) since plaintiffs have been permitted to amend their complaint twice and stated in 91 that everything had been taken; but have since claimed additional takings on later dates. I also stated that the Penn Central analysis on the liability issues would probably require an appraisal which could not be done until a visit to the property around the time of the spring runoff; that no experts had been designated by either party or deposed, and no expert reports had been written; and we would need further discovery.

“The court then ordered plaintiffs’ counsel to file on Jan. 10<sup>th</sup> a memo outlining what issues he proposed to try and gave us until Jan. 30<sup>th</sup> to respond; the court then set the next status call for Feb. 6<sup>th</sup>. It sounds like he is looking at a fall trial in the case.”

“This is a significant precedent because it demonstrates that even though the government eliminates a landowner’s grazing permit,” the Holmgren continued. “This does not preclude the landowner from pursuing a takings claim for the property the government has kept them from accessing.”

“It is important to note this court is not considering the question whether or not a rancher is required to have a grazing permit. The Claims Court’s jurisdiction is over whether the regulations at issue has taken property without just compensation.

“This is an excellent ruling that up holds the rule of law concerning property...Hage has done it. This is big, Judge Loren Smith states in part, “Defendants (US Government) reliance on Lucas is misplaced because the permissible permanent easement the Supreme court envisioned was in the context of pre-existing nuisance principles inherent in the landowner’s title itself...The Court is not of the opinion that the lack of a grazing permit that prevents access to federal lands, not public lands, can eliminate Plaintiffs’ vested water rights and ditch rights that pre-date the creation of the permit system.

“Wayne Hage and former Congresswoman Helen Chenoweth-Hage, and the Hage children are important and respected members of the Nevada Live Stock Association, an Association that will not compromise your rights, your neighbors’ rights, your heritage in ranching, or your property.

“We are the hope of the future for ranching in Nevada. We thank and salute the Hages’ for their important fight for freedom.” -CPB

# Snow-precipitation update

Based on mountain data from NRCS Snotel sites  
As of Tuesday: January 14 , 2003

.Basin	elev.	Snow water equivalent			total precipitation		
Data site name	(ft)			percent			percent
		Current avg		avg	current avg		avg
Bruneau basin							
Bear creek	7800	9.3	9.9	94	9.4	12.0	78
Big bend	6700	4.7	5.1	92	4.5	6.4	70
Pole creek R.S.	8330	6.7	10.6	63	5.0	6.3	79
Seventy-six creek	7100	4.8	6.1	79	6.6	8.3	80
Wilson creek	7120	5.0	7.2	69	5.3	9.6	55
Basin wide percent of average				78	72		
Owhee Basin							
Big Bend	6700	4.7	5.1	92	4.5	6.4	70
Fawn†Creek	7000	7.5	9.1	82	8.8	12.4	71
Jack creek							
Upper	7250	7.7	9.3	83	8.5	11.0	77
Laurel							
Draw	6700	6.1	5.9	103	7.0	10.1	69
Mud Flat	5730	3.8	4.0	95	5.3	6.7	79
South Mtn	6500	7.6	9.8	78	8.9	12.5	71
Taylor							
Canyon	6200	2.3	2.8	82	3.6	4.4	82
Basin wide percent of average				86	73		

Snow - precipitation update  
Based on mountain data from NRCS Snotel sites  
As of Tuesday: January 14 , 2002

Bruneau basin							
Bear Creek	7800	12.0	9.9	121	13.2	11.8	112
Big Bend	6700	7.9	5.1	155	6.6	6.3	105
Pole creek R.S.	8330	12.9	10.6	122	6.8	6.2	110
Seventy-six Creek	7100	10.0	6.1	164	9.5	8.2	116
Wilson Creek	7120	8.5	7.2	118	8.7	9.5	92
Basin wide percent of average				132	107		
Owhee basin							
Big Bend	6700	7.9	5.1	155	6.6	6.3	105
Fawn Creek	7000	9.5	9.1	104	12.7	12.3	103
Jack creek Upper Laurel	7250	10.5	9.3	113	11.6	10.9	106
Draw	6700	7.4	5.9	125	11.5	10.0	115
Mud Flat	5730	5.7	4.0	142	8.7	6.7	130
South Mtn	6500	12.5	9.8	128	13.4	12.3	109
Taylor Canyon	6200	5.7	2.8	204	4.8	4.3	112
Basin wide percent of average				129	110		

VISION BIBLE CHURCH

4920 Lifeline Dr., Marsing, ID 83639  
1-888-580-5384  
E-mail: Lifeline@lifemin.com

PASTORS:  
BENJE GRAVES  
&  
ERNEST SALMOND

WEEKLY SUNDAY SCHOOL 9:30 a.m.  
WEEKLY SUNDAY SERVICE 10:30 a.m.

MONDAY EVENINGS -- CURRENTLY DOING A CREATION CLASS  
(other subjects to come)

YOUTH MEETINGS WEDNESDAY 7:00p.m.

PURE WORD GROUP WEDNESDAY 7:00 p.m.  
(starting Feb. 26th)

REACHING OUT  
CHANGING LIVES

STARTING FEBRUARY 26TH  
PURE WORD GROUP  
(12 step recovery progam)





Appreciation

Community members wait in line for lunch at Campbell Tractor near Homedale last Friday as part of a John Deere Day appreciation luncheon. Door prizes were given away and a movie was presented.



Romance

Couples enjoy a romantic candle light dinner with their spouses at the Owyhee Health and Rehabilitation Center to celebrate Valentines Day Friday. Pictured are Charolette and Ed Rippie (end of table), Annie and Clyde Stewart, David and Judy Phelps and Connie Constatine, (standing) Clyde's niece. About 12 couples attended what has become a tradition since the first one in 2001. The couples had a fried chicken dinner with mashed potatoes, heart beet salad and desert.

Senior news

Homedale Senior Center

Feb. 20: Baked fish, baked potatoes, veggies, salad, roll, fruit.  
Feb. 21: Breakfast 7-10 AM-Sausage, eggs, hashbrowns, biscuits and gravy, pancakes, juice. Snake River Quilters Workshop 9:00-2:00.  
Feb. 25: Hungarian goulash, veggies, salad, roll, cookies. Shopping bus to: Homedale 1:30.  
Feb. 26: Sign language class, 1:00.

Marsing Senior Center

Feb. 20: Meat loaf, potatoes w/gravy, creamed corn, coleslaw, and beverage.  
Feb. 24: Meat balls, cabbage, potato, vegetables with assorted sauces, dessert, and beverage.  
Feb. 26: Breakfast. Ham, eggs, hashbrowns, cooks special fruit and beverage. Lunch. Potato au-gratin sliced ham, vegetables, fruit, salad, dessert and beverage.

Tables missing from Community Center

Somehow, somewhere, several new tables from the Marsing Community Center are missing and center coordinator Eleanor Stewart is on a search for them.

Stewart said after the Marsing Disaster Auction, as the center was being cleaned-up and things put away, she found that several of the center’s new tables were missing. She said no one really knows when they were taken, or if they may have become mixed up with someone else’s tables.

“It could have been a few months ago, we really are not sure,” Stewart said. “We don’t use them very much and we don’t lend them out so we haven’t taken the time to count them to know when they became missing. I just want to get them back. Someone may have taken them by accident. I really am not sure how they disappeared, we just hope to get them back.”

Stewart said she would like to speak to anyone who has rented the hall since its opening in June. To report any information on the missing tables, call Stewart at 896-4523.

Poison Creek Posse 4-H club elects officers

The Poison Creek Posse 4-H club elected officers and discussed the opportunity to conduct a horse show in June.

Kinzie Reuck was elected president, Vanessa Lootens was chosen as vice president, Bobby Carter is the club’s secretary, Heather Williams is the treasurer, Becky Carter is the reporter, Taylor Thomas and Hillary Williams will be the club’s callers, Rosie King will be in charge of refreshments and Troy Dines is the new Sargent of Arms.

The club’s next meeting will be on Feb. 25<sup>th</sup> at 7 p.m. at the University of Idaho Owyhee County Extension Office.

Snake River Livestock Club plans first meeting

The Snake River Livestock 4-H Club will hold its first meeting on Feb. 24 at the Eastern Owyhee County Library at 7 p.m.

Any child wishing to learn and participate in the livestock program is invited to attend with their parents.

Snake River Livestock Club covers beef, sheep, swine and goat projects only. All participants will need to register that evening. Cost of registration will be \$6. For more information contact Joe or Verla Merrick at 834-2641.

**Quality ELECTRONICS**

- Specializing in TV and VCR repair
- All work guaranteed
- Large stock of parts on hand
- The Latest In Diagnostic Equipment
- Free Estimates!

*“Old-fashioned service on modern technology”*

**Mark Thatcher-Owner 337-3822**

**Keeping Children Safe Panel**  
**Region III Children and Family Services**  
**VOLUNTEERS NEEDED**

- Are you looking for a way to be involved in your community?
- Do you have an interest in the welfare and safety of children?
- Will you be able to give 4 hours a month?

Volunteers are needed immediatley to fill positions and serve on an advisory panel for the Department of Health and Welfare. Volunteers meet monthly to review cases and be a voice for children in our community and learn about the services of Region III, Department of Health and Welfare.

**REQUIREMENTS & INFORMATION FOR VOLUNTEERS**

**Location:** Department of Health & Welfare, Caldwell  
**Time:** 1<sup>st</sup> Thursday of the month, 3:00 - 6:00 pm  
**Training:** Education on child protection laws is provided during monthly meetings and at the Keeping Children Safe State Conference in the Fall.

Volunteer forms are available and a background check and fingerprinting are required.

**Call:** Roxanne Anderson, Chief of Social Work - 455-7025  
Mary Brubaker Comstock, KCS Panel, Chair - 337-3405





**Seventh grade boys bball team**  
The seventh grade boys basketball team ended its season with a 5-3 record for the A team and a 7-1 record for the B team. The season ended with a victory over Vale last Thursday. Pictured are front row from left to right: Zach Tolmie, Joey Cline, Jordan Pegram, Silvino Jimenez, Jessie Kesler, and Gauge Egurrola. Middle row: Mathew Hanson, Jason Rangel, Justin Mashburn, Austin Ferguson, Brady Potter, Samuel Sanchez and Dustin Regis. Back row: assistant coach Tom Pegram, Daniel Valadez, Nathaniel Pruess, Jamie Uriarte, Conner Morris, Levi Babcock, John Bittick, Jarrod Driskell and coach Wayne Skeen.



**League champs**  
Homedale sixth grade girls won the league champion in the Weiser Select Basketball League with an 11-0 undefeated record. Pictured are backrow left to right, coach Kurt Shanley, Mikal Mackenzie, Haylie Frelove, Kelsey Martinat, Erika Shanley and Terra Rust. Front row, Ashley Thomson, Cortnee Krzesnik and Hannah Gibson. Not pictured is assistant coach Darren Krzesnik. The league consists of Parma, Weiser, Nyssa, Marsing and Homedale.

Owyhee Graffiti

Volume 1

The latest book by Mike Hanley

Owyhee Graffiti

VOLUME 1

MICHAEL R. HANLEY IV

A collection of anecdotes, stories, and history of the Owyhees

\$24.95

plus \$3 p&h

Available at

Owyhee Avalanche office

Homedale

THIS WEEK'S SPECIALS!



'89 Ford Bronco  
AT, Clean, Nice Family SUV  
**\$55/Week O.A.C.**



'95 Jeep Cherokee  
AT, AM/FM, Air  
**\$1200 Down O.A.C.**



'95 Chevy Beretta  
Great on Gas  
**\$2645**



'87 Chevy Blazer  
AT, Clean,  
**\$1275 - This Week Only!**



HEARTLAND  
CAR COMPANY

17211 Highway 95 • Homedale  
337-5040

Se Habla Español

2A Western Idaho Conference standings

Boys' Basketball through Feb.15  
Melba 10-2 14-6  
Parma 8-4 11-9  
New Plymouth 9-3 16-3  
Homedale 8-4 13-7  
McCall-Donnelly 3-9 7-12  
Nampa Christian 4-8 10-10  
Marsing 0-12 1-19  
x-won regular season crown  
Girls' Basketball through Feb. 15  
x-New Plymouth 12-0 18-5  
y-Nampa Christian 10-2 18-5  
z-Homedale 8-4 19-6  
Marsing 5-7 11-13  
Melba 4-8 6-16  
McCall-Donnelly 2-10 4-17  
Parma 1-11 5-17  
x-won regular season crown  
y-won district tournament  
z-earned second state berth

Jordan Valley girls outscore Panthers in overtime

Jordan Valley's Anna Watkins scored 16 points and had nine rebounds and Mindy Johnson contributed 12 points, as the Mustangs defeated Prairie City 56-46 in overtime in Old Oregon League girls' basketball action at Jordan Valley Saturday.

The Mustangs' Emily Mackenzie penetrated and found Watkins for a short jumper right before time expired in regulation to send the game into overtime tied at 44.

The Mustangs' Lauren Cuvelier scored six of her 10 points in the extra session, as Jordan Valley (9-11 overall, 3-7 OOL) outscored Prairie City 12-2.

Brittney Reid led Prairie City with 24 points.

Julie Eiguren chipped in six points and 10 rebounds for the Mustangs.



# Trojans hold Huskies in double o.t. thriller

Homedale unseats Pilgrims for chance at 2A state title

Homedale narrowly held on to a piece of the district tournament pie Thursday night with a rough double overtime victory over the Marsing Huskies in a WIC 2A District III Tournament girls basketball game.

The loss sent the Huskies home with a 59-56 loss and then advanced the local team to meet the New Plymouth Pilgrims who entered the tournament as the No. 1 seed.

New Plymouth took an upset loss from Nampa Christian in the final stages of the tournament and a win against Homedale would have sent them to state in the second place spot. But Homedale stomped that dream out with a 48-37 victory Saturday night and a chance at the state title.

Saturday's battle for the final slot to the 2A state finals was the Trojans' third loser-out game of the tourney, while New Plymouth was coming off a devastating 38-20 loss to Nampa Christian in Thursday's championship game, the Pilgrims' first loss to a Western Idaho Conference opponent.

Trailing 29-20 at half, New Plymouth could only manage five field goals the rest of the way, and didn't help themselves at the foul line either, finishing the second half 6-of-15 with action stopped and 10-of-25 for the game.

But New Plymouth still rallied from a 34-23 deficit midway in the third period to pull to within 36-30 heading into the final eight minutes. Four misses at the line to start the fourth quarter and Kelsi Haylett's jumper and assist to

Michelle Gibbens bumped the HHS lead back to 10 and the Pilgrims could never answer. Homedale prepares for the state tourney right back on the Middleton High court on Thursday.

Taci Morris had 13 points off the bench, while Haylett finished with 11 points and six assists.

On Thursday, Amanda Stewart scored six points of her game-high 31 points in the first overtime to put the Huskies up 51-48 with only 13 seconds remaining in the quarter.

Haylett hit a three pointer

with two seconds remaining to send the game into a second overtime. Sandy Garcia put an end to the overtime battle with a final second three point shot which bounced on the rim several times before falling through as the buzzer sounded ending the Huskies season.

Haylett led the Trojans with 20 points as teammate Anzaldua gave nine points in the effort. Taci Morris added seven points.

For the Huskies, Amie Vanek landed 15 points in the match and Jamie Lynde added nine points.



Kelsi Haylett looks for an opening as Jamie Lynde closely guards her. Haylett led Homedale scoring 20 game high points. Photo submitted by Gregg Garrett.



Taci Morris scored a team high 13 points to lead the Homedale Trojan's in an upset over the New Plymouth Pilgrims and a seat at the state girls basketball tournament. Photo submitted by Gregg Garrett.



Homedale's Michele Gibbens, Jill Cooper and Jennifer Anzaldua surround Marsing's Amanda Stewart. Stewart poured in 31 game high points for the Huskies in it heartbreaking double overtime loss to the Trojans. Photo by Gregg Garrett.



Homedale fans react to Sandy Garcia's winning three-point basket. Photo submitted by Gregg Garrett.



**Appliances**



**Dining Room**



**Living Room**



**Bedroom**

**PRESIDENTS' SALE**

**Inventory Clearance!**

**Everything in the store is marked down!**

**Hurry in for best selection!**

**Rostock**

**FURNITURE & APPLIANCE of CALDWELL**

**307 South Kimball, Caldwell 459-0816**



# Homedale boys stop McCall-Donnelly

Trojans continue winning week with victory over Huskies

Spencer Batt led three Trojans with double figures Wednesday in the beginning of a winning week in 2A Western Idaho Conference boys basketball. Homedale ended the week with a 78-41 victory over rival Marsing in both teams' final regular season games.

On Wednesday, Homedale traveled to McCall and went home with a 63-58 win. Batt finished with 15 points as teammate Nick Williams added 14 points and Cole Cooper chipped in 12.

Homedale led 34-32 at the end of the first half but held the Vandals to six third quarter points to pull away.

Marsing traveled to Homedale Friday for senior night in both teams' final regular play action before the district tournament begins this week.

Homedale ended the season with a 13-7 overall and 8-4 conference record and will enter the district playoffs as the No. 4 seed team. Marsing met New Plymouth for the first round Tuesday night, but results were unavailable at press time.

Caldwell led the Huskies with 12 points and Cody Heller added nine.

Ten different players scored for the Trojans who played Nampa Christian Tuesday in the tournament opener.

Batt recorded 28 points for the Trojans followed by Cooper with 10 points and Haylett and Cody Garrett adding in nine points each.

## Anderson leads Mustangs for 66-46 win over Prairie

Jordan Valley Mustang Pat Anderson had 15 points and seven blocked shots as he helped lead Jordan Valley to an easy 66-46 Old Oregon League boys' basketball victory over Prairie City Saturday night at Jordan Valley High School.

Anderson was helped out offensively by Shaun Lequerica, who had 15 points, 12 rebounds and three blocks in the Mustangs' (16-3 overall, 8-2 OOL) victory.

Brian Grenke added 13 points for the Mustangs, including three 3-pointers in the first quarter.

Jordan Valley is back in action Friday, as the Mustangs travel to Adrian for an OOL contest.



Homedale's Matt Landa fights for possession of the ball against McCall. Photo submitted by Gregg Garrett.



Spencer Batt drives past Marsing's William Caldwell for two of his 28 points during Homedale's last game of the season. Photo submitted by Bill Bruce.

Subscribe today!

Have the Owyhee Avalanche delivered to your home each week!

337-4681



FEBRUARY IS FREE BEEF MONTH AT LES SCHWAB!

Tires LES SCHWAB

Here's How It Works:  
\$7.50 worth of FREE BEEF with 2 new passenger or pickup tires or 4 retreads.  
\$15.00 worth of FREE BEEF with 4 new passenger or pickup tires.

PASSENGER CAR TIRES

LOW COST ALL SEASON PASSENGER CAR RADIALS

This Is An Excellent Value On Highway and All Season Radials. Offering A Smooth Quiet Ride And Tough Steel Belt Construction, It Comes With The Les Schwab Written Warranty At No Extra Charge

STARTING AT

19<sup>95</sup>

P155/80R-13

FREE BEEF

TREAD MAY VARY FROM PHOTO

FREE MOUNTING • ROTATIONS • ROAD HAZARD • FLAT REPAIR • AIR CHECKS

SIZE	PRICE	SIZE	PRICE
P155/80R-13	19.95	P215/75R-15	35.17
P165/80R-13	27.11	P225/75R-15	37.31
P175/80R-13	27.46	P235/75R-15	38.11
P185/80R-13	29.02	P205/70R-14	41.21
P185/75R-14	30.01	P215/70R-14	43.66
P195/75R-14	30.67	P205/70R-15	43.35
P205/75R-14	32.08	P215/70R-15	45.14
P215/75R-14	34.84	P225/70R-15	46.93
P205/75R-15	35.03		

PICKUP & SUV TIRES

351 ALL SEASON STEEL BELTED RADIAL

These Low Cost All Season Radials feature outlined white letters and are economically priced. They are a great value.

STARTING AT

60<sup>94</sup>

P235/75R-15 C

FREE BEEF

PLUS FET

FREE MOUNTING • ROTATIONS • ROAD HAZARD • FLAT REPAIR • AIR CHECKS

SIZE & LOAD RANGE	PRICE
P235/75R-15	B 60.94
P245/75R-16	B 71.95
P265/75R-16	B 86.76
LT215/75R-15	C 63.02
LT235/75R-15	C 63.99
LT225/75R-16B/W	D 70.77
LT235/85R-16B/W	E 75.84
LT245/75R-16	E 75.42
LT255/70R-16	C 100.99
30/9.50R-15	D 70.10
31/10.50R-15	C 73.02

SPECIAL PURCHASE

OVER 200,000 PASSENGER RADIALS

STARTING AT

23<sup>56</sup>

P155/80R-12

FREE BEEF

FREE MOUNTING • ROTATIONS • ROAD HAZARD • FLAT REPAIR • AIR CHECKS

We've made a special buy of over 200,000 passenger radials, and we are passing the savings on to you. Don't miss this great time to save!

SIZE	PRICE	SIZE	PRICE	SIZE	PRICE
P155/80R-12B/W	23.56	P175/70R-14B/W	34.08	P205/60R-16B/W	42.98
P155/80R-13	35.12	P195/70R-14B/W	44.06	P255/60R-17B/W	83.57
P165/80R-13	37.94	P205/70R-14	46.09	P275/60R-20B/W	141.08
P175/80R-13	38.40	P215/70R-15B/W	40.52	P275/55R-20B/W	182.31
P185/80R-13	40.36	P215/70R-16B/W	90.91	P245/50R-16B/W	96.12
P185/75R-14	42.68	P225/70R-16B/W	56.04	P285/50R-20B/W	192.73
P205/75R-14	48.37	P175/65R-14B/W	37.43	P225/45R-17B/W	93.40
P225/75R-15	53.41	P185/65R-15B/W	44.85	P275/45R-20B/W	197.98
P225/75R-16B/W	67.44	P255/65R-16B/W	71.64	P275/40R-17B/W	87.79
P185/70R-13B/W	33.26	P235/65R-17	90.83		

LES SCHWAB TIRE CENTER

HOMEDALE • 337-3474







# Looking back...

from the files of The Owyhee Avalanche and Owyhee Chronicle

25 years ago

February 16, 1978

Property owners hold organizational meeting

Homedale-Forty-two persons attended the organizational meeting of the Owyhee County Property Owners Association Monday night. The meeting was held at the Homedale Senior Citizen’s Center.

Organizers of the meeting were Martha Grimes, Sandi Hinton and Earl Scott.

Two representatives of the Idaho State Property Owners Association, Boise, addressed the group, explaining the movement throughout the state. Also discussed was the status of property tax relief legislation now before the legislature.

Officers and directors of the Owyhee group will be elected at the February 24 meeting, which will be held in the Senior Citizens Center, beginning at 7:30 p.m.

All property owners of Owyhee County are invited to attend. However, only members of the association may vote, the release stated.

Named to Dean’s List

Homedale-Three area students were included on the Dean’s list for the fall semester of the college of Education, Idaho State University, Pocatello. Students must carry at least 12 credit hours and maintain at least a 3.25 GPA. Named were Helen L. Lineberger and Maxine S. Tolmie, Homedale, and Josephine B. Susaeta, Grand View.

Junior High highlights

Homedale Junior High girls basketball was presented this week when the girls traveled to Parma Thursday.

The seventh grade team was defeated by Parma 15-26 and the eighth grade team narrowly lost by one basket 16-14. High scorer for the eighth grade team was Terry Metzger with six points. Shauna LaSalle and Susi Larrocea contributed four points each.

The junior high met New Plymouth Saturday morning and captured a nice 16-14 win for the seventh graders coached by Mr. Skeen.

The eighth graders were defeated by New Plymouth 16-10. Mr. Ankeny is their coach.

Terry Metzger and Susi Larrocea put in four apiece.

‘round Homedale

The Celia Cowan WMU of the Friends Community Church met for an all day work meeting February 10 at the church. The zucchini cookbooks were put together ready to sale. A potluck dinner was served at noon with Lois Vanderhoff as hostess. The afternoon business meeting was conducted by Crystal Price. There was one guest, Mrs. Catherine Latham of Greenleaf, who is the quarterly meeting vice president of the missionary union.

On February 1, Mr. and Mrs. Jim O’Keefe took over the management of the Sunset Village Mobile Home Park owned by the Idaho Land Developers. Many improvements have been made in the last months on the park, fences, roads and landscaping.

Last Thursday, Irene Frye felt well enough to go to the Senior Center for the birthday social. Her friends were very happy to see her out.

Mr. and Mrs. Roy Scherer’s sons and families from Caldwell and Boise are hosting a 50<sup>th</sup> wedding anniversary reception on February 25 for their parents from 2-5 p.m. at the Senior Citizen Center. Friends are invited. It is requested that there be no gifts.

Dottie Beavers and her son Roger, Caldwell, were in Homedale last Tuesday evening to visit Arthur Goodloe in the nursing home and to call on Mrs. Florence Goodloe.

50 years ago

February 19, 1953

City of Homedale to be blessed with paved streets

Suffering citizens of Homedale will find some relief from the annual dust problem this year. The reason is that the Homedale City Council has approved the expenditure of between \$18,000 and \$20,000 for the oiling of streets within the city limits.

This action was taken at a special meeting of the council last Monday night when it was determined that a surplus of approximately that amount would be present in the city treasury at the end of the fiscal year.

Long a prime problem with the city, dusty streets have been high on the agenda for the city officials and it was apparent at the meeting Monday night that each and every member of the council was happy tat a street-surfacing program can be undertaken this year.

Bill Wegman, street commissioner, has been busy this week preparing specifications for the oiling, and he reports that it is anticipated that over 20 city blocks can be oiled under the initial program. He stated that it was decided that the streets which have previously been improved by grading and graveling would be the first to be coated and other street would follow as funds permit.

In other action, the council approved the application of Scotty’s Sport Shop for one slot machine license, and of Louis Krall for six slot machine licenses, the slots to be in operation at Garrity’s Cafe.

Junior C of C to organize here

A Junior Camber of Commerce may be organized here, according to Don Townsend, who announced this week that an organizational meeting for that purpose will be held at the Armory building in Homedale Tuesday evening, February 24<sup>th</sup>.

Don Sower of Caldwell has been contacting potential members in the Homedale area the past few weeks to arouse interest in the Jaycee organization. The local club will be under the sponsorship of the Caldwell group.

The meeting Tuesday evening is slated to begin at 8:00 p.m. and it is hoped a large group of interested young businessmen will be present.

Town and Country Shop opens Sat.

The Town and Country Shop will hold it’s opening Saturday, February 21, at 10:00 a.m., as announced by the owners, Elaine Tolmie and Charlotte Kerschner.

The home-owned dress shop will feature Betty Barclay dresses, Beverly Vogue bras and girdles, Gotham gold strip hose, petticoats, belts, costume jewelry, sun and fun dresses of California, and bathing suits.

Homedale School in contest

Homedale’s new grade school building has been entered in the School Executives’ 1952 competition for Better School Design and the plans for the building are on display at the national School Administrators convention being; held this week at Atlantic city.

Culler and Gale, Spokane, architects for the building, recently informed the Homedale school board that they have been asked permission to use this multi-purpose design in the American School and University publication.

4-H Club elects year’s officers

The Dressmaker’s 4-H club met Feb. 11 to elect officers for the coming year. Those elected were: President, Shirley Walker; vice president, Janice Matteson; secretary, Lucy Vanderhoff; treasure, Wanda Kay Friel; reporter, Mary Ann Brown, and song leader, Billy Herron.

134 years ago

February 15, 1868

NEW STRIKE!

Judge Watson has discovered a new ledge on War Eagle mountain, at the head of Web-foot-gulch. It was struck about two hundred and fifty feet north of the northern limits of the Poorman, and on a direct line with that famous mine. We have been shown prices of rock from the new discovery, and it certainly very much resembles Poorman ore. It is very probable that the Judge has stumbled on the counterpart, or rather the extension of the richest Poorman on record.

DISTRICT ATTORNEY.

We have received information by which it appears that our not having a District Attorney is no fault of Judge Curtis. He having made repeated efforts to have some one appointed to fill the place, but could find no one who would accept it. The necessary paper empowering appointment are now in the hands of Messrs, Ganahl and Huggan, who inform us that they are ready and willing to attend to the duties of the office, free of charge, until some one shall be appointed.

NO TOLL

has been charged this winter at Jordan and Skinner’s toll roads, which are in splendid condition-good facilities for learning.

THE GOLDEN CHARIOT.

The Owyhee mill has worked 200 tuns of Golden Chariot ore, and Minear’s mill is constantly running on the same, both of which, it is understood, have given very satisfactory results. We learn that a contract has just been let for sinking a shaft fifty feet on the ledge at forty dollars per foot.

STEAM HOISTING WORKS.

We learn that engines for hoisting purposes will soon be placed on several of the mines, among which are the Poorman, Golden Chariot, Oro Fino and the Rising Star, in Flint-looks like business to see such preparation.

THE POTOSI.

Messrs, Cope and co. are busy at work on the Postosi. They are running a drift on the ledge, south into the hill, from the bottom of the shaft that we mentioned last week. It keeps up its character for richness, and is increasing in width.

PROGRESS OF THE C. P. R. R.

Work on the Central Pacific Railroad is being vigorously pushed forward. A large force of Chinamen are already at work in the Truckee canon, ten miles below Hunter’s, and as many as can find room are at work between that and the State line. After the grading is completed in the canon rapid progress will be made up the Humboldt.

MRS. DENOILLE.

We learn from the Statesman of the 6<sup>th</sup> inst., that the Indians whom the scouts, Picket and Hicks captured several weeks ago on the Owyhee, have acknowledged themselves as being a portion of the band who killed Sergeant Denoille and captured his wife. They admit that Mrs. Denoille is dead, but do not reveal the manner of her death.

WATER WORKS.

The Idaho Hotel, kept by Eastman and Co., is abundantly supplied with water from a limped spring on the side of Florida Mountain. It is conducted nearly a mile to a reservoir in the hotel, a portion of the distance in the ditch, and the remainder in pipes. It is really a splendid and valuable acquisition; the water is sweet, and in summer time it is icy cold. Taken altogether Eastman has splendid water works.

LOOK OUT FOR FRESHETS.

Owing to the great depth of snow in the surrounding valleys and which will most likely go off before long with a rush, there will be more destructive freshet than has ever been known in this county. People living along the rivers will do well to prepare for it. Especially look out for your ferryboats, or you will be under the necessity of building new ones.



# Commentary

## Letters to the editor

### Angry and disgusted

I am writing this letter as a husband, father, citizen of Canyon County, a businessman in Owyhee County, and a concerned citizen. I hope to raise the awareness of the good people of Owyhee and Canyon counties.

On January 14<sup>th</sup>, 2003, former Owyhee County Deputy and Dare Program Officer, Troy Tarter plead guilty to sexual battery with a minor. This former officer betrayed the trust not only in his innocent victims, but also the parents, families, friends and the law he took an oath to uphold. He betrayed the morals and ethics that we as citizens trusted him to keep and teach to our children. He betrayed the Owyhee County Sheriffs Department and its honorable officers.

I am angry and disgusted. My own three sons are young and impressionable. I teach them that our police officers are good, honest trustworthy people. I have taken them to the police department to meet our officers and build a trusting relationship. I have told them that these officers are the “good guys” and they are here to help you. Thanks to Troy Tarter and the choices he made to destroy that trust, I must tell them that there can also be some bad cops.

My anger is nothing compared to the rage that the parents of these children must feel. I try but I can’t imagine the pain and anguish these unsuspecting families are suffering. Can you empathize with their feelings of betrayal, victimization, violation, and the precious innocence of their child, stolen forever?

What is acceptable punishment for a predator like Troy Tarter? The law will direct the judge in this case with varying guidelines. My question for the judge is this: Will you keep the gap between the “good guys” and the evil predators wide and truly distinguishable? Will you send a message that if you choose to betray the innocent you will pay with your freedom? Will you honor the “good guys” by keeping them raised up in a place of honor due to their dedication and sacrifice to protect our citizens? Will our judge choose to give this predator a slap on the wrist and them turn him loose? I hope not!

I hope the judge will be looking for the maximum sentence available. I would like to see life in prison without the possibility of parole. I want to see Tarter branded as a “registered sex offender” for the rest of his life.

For the well being of my family and hopefully to the benefit of the victims and their families, I intend to write a letter asking Judge Morfitt to issue the harshest, most severe sentence available. I am asking our Judge to draw the line in the sand and hold this criminal accountable. I encourage the responsible citizens of our county to do the same and make your views known to Judge Morfitt. Your letter must be received by February 28<sup>th</sup>, so take up you pen and act now.

Support letter to Judge Morfitt should be mailed to:

Denise R. Himes, Victims Witness Director, c/o David L. Young, Canyon County Prosecuting Attorney, Canyon County Courthouse, 1115 Albany St., Caldwell, Id. 83605, RE: Troy Tarter.

Wayne Hungate  
Caldwell

### We haven’t forgotten

In October 2002, Al Gore’s Democratic campaign speech on t.v. he said “blame Bush for the slowed up economy.” I am guessing he forgot the following took place in the Clinton-Gore administration and not in the Bush administration.

The western states top economy was logging, mining, farming, and grazing livestock. During the Clinton administration, Babbit declared the Spotted Owl and the Spotted Frog endangered to protect the timber. The E.P.A. stopped logging and shut down the sawmills. I would bet if the E.P.A. would survey the fires in the summer of 2002, they would find there were more trees damaged in 2002 than 20 years of logging in the past. When the spotted frog was listed endangered, the Idaho and Oregon cowboys and ranchers took the environmentalists on a tour of the creeks and springs in the Owyhee Mountains. Their finding were that the frogs were living comfortably and in no danger whatsoever!

Getting back to the Spotted Owl subject, the Judge in Tucson, Arizona rules that grazing harms the owls’ habitat! For the past 75 years, I’ve roamed in the timber, desert, mountains and I’ve never heard of owls of any kind feeding on grass. Their prey is rats, mice, and snakes of all species. Further more, if the ground is bare, they can easily see their prey. I would suggest to the Arizona Judge and Oregon Judge that said no to grazing back in the 90’s, go back to college and learn how the hard-working tax payers made a living off the land?

I just wanted to let Mr. Gore know the west hasn’t developed Alheimers as yet. We haven’t forgotten who slowed down our western economy in the past. We need more western and less eastern lawmaker in the W.DC! I’ve been a native of the west since 1920.

Creighton Kelly  
Homedale

## On the edge of common sense

Baxter Black, DVM

### Wabi sabi

I was at the sale barn recently and heard one farmer say to another, “Feng shui is passÉ.” “I know,” said the second, stuffing a cabbage-sized wad of Redman in his cheek, “Wabi Sabi is back.”

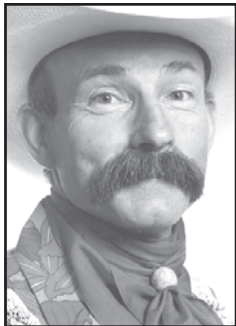
I thought, Chinese food? Exotic cattle?

Martial arts? A new Secretary of the United Nations? No...a style for decor, as in Louie the XIV, Tudor or Southwestern.

While Feng Shui represents neatness, clean lines and proper placement, Wabi Sabi embodies the idea that imperfection is beautiful; that flaws enhance rather than detract.

Imagine a new milking parlor, a new feedlot or a veal barn; shiny silver rails, painted walls, pipe fence, sparkling dials, clean floors, well-lighted, easy access, heavily financed...Feng Shui.

Now picture a rusting, one tongue manure spreader filled with flowers, your dad’s old spittoon holding flowers, or a weathered old boot containing flowers...Wabi Sabi.



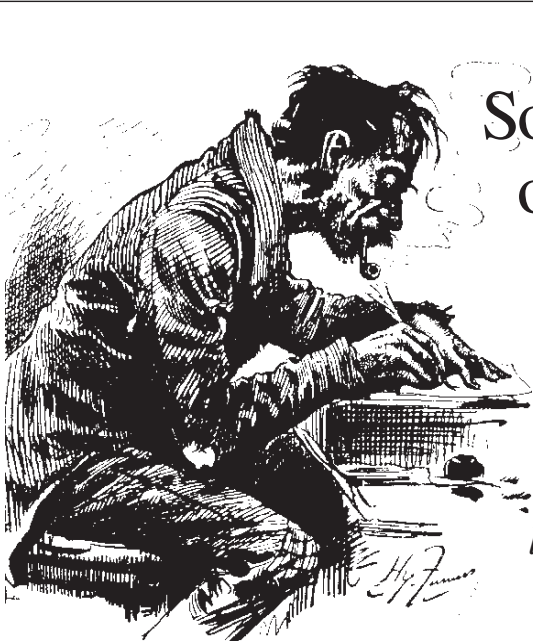
I can think of many examples of Feng Shui operations. The vegetable farmers in Colorado and California that farm right up to the edge of the house. In the spring it almost looks like they prune each plant so they look exactly alike...or those farms in Iowa or Tennessee where each lawn is 2 1/2 sections and they mow it right up to the highway. Or any small Mormon town in Utah; houses painted, fences tight and rose bushes trimmed, picture perfect.

So, you must be thinking, that means I’m not a too tired, too poor, too tight, too dumb farmer...I am merely practicing Wabi-Sabi. Sorry, boys, one of the rules: “If you thought the†‘life experience’ of the ’86 Plymouth up on blocks in your front yard made it more beautiful, that would be Wabi Sabi. But if you couldn’t afford any better, or were too lazy to move it, that would not.”

There would appear to be a fine line between Wabi-Sabi and poor facilities, i.e., a broken latch on a swingin’ gate that you’ve been baler twining since your daughter went off to college, a box of dull drill bits that are gathering dust beside the Drill Doctor, or the†tangled mane of the old horse you turned out last fall.

Maybe as one gets older the more we value Wabi Sabi; the carving knife that grows smaller every year, the dogs that get grayer, the pickup that just keeps puttering along, the fallin’ down fence your dad built, the unused clothesline, all things you could easily replace but somehow, you don’t. Because you look at yourself in the mirror every day and, without your glasses you can’t see the wrinkles quite so easily or the hair growing out of your ears. And you like to think you’ve still got a lot of life left in you, like that new saddle with the leather worn†smooth that you bought...however many years ago.

It dawns on me, I’m not just practicing Wabi Sabi, I’m it!



Something  
on your  
mind?

We  
welcome  
letters to the  
editor

The Owyhee Avalanche

P.O. Box 97 • Homedale ID 83628  
avalanche@citlink.net



# Public notices

## DELINQUENT ACCOUNT UNCLAIMED ITEMS

B and J Storage, 210 W. Idaho Ave, Homedale is making a one-time offer to tenants that have delinquent accounts to get current without penalty or late charges. Some tenants last known address are not correct. Contact B and J Storage immediately at 452-4093 to make arrangements for payment.

Barbara Upham, Boise, Id; Ruben Corinas, Homedale, Id; Tim Gluch, Adrian, Or; Sandra Shawnee, Heber Springs, Ar; Andy Coffman, Homedale, Id; Casandra Guess, Homedale, Id; Mary Ward, Wilder, Id; Chris Carson, Homedale, Id; Kenneth Bopp, Nampa, Id; Anna Farias, Nampa, Id; Joe and Louise Smart, Homedale, Id; Jose S. Quintero, Homedale, Id; Marie Badiola, Caldwell, Id.

Tenants accounts that remain delinquent as of Feb 26, 2003, will be sold by written bid at a date to be determined.

Any questions on delinquent accounts contact B and J Storage 452-4093.

Thank you  
Bette Wozniak  
B and J Storage

2/19,26/03

## The following application(s) have been filed to appropriate the public waters of the State of Idaho: 57-11619

BRUCE REUCK  
1002 SUCCOR CREEK RD  
HOMEDALE ID 83628  
TERRY REUCK  
1002 SUCCOR CREEK RD  
HOMEDALE ID 83628  
Point(s) of Diversion NENW S14 T03N R06W OWYHEE County  
Source SUCCOR CREEK  
Tributary To SNAKE RIVER  
Use: IRRIGATION 03/01 To 11/15 1.8 CFS  
Total Diversion: 1.8 CFS  
Date Filed: 11/01/2002  
Place Of Use: IRRIGATION  
T03N R06W S14 SWNE SWNW Lot 2 SENW NESW NWSW Lot 3 NWSE  
Number of Acres 90

Remark: Applicant agrees to mitigate consumptive use in the future as needed.

Permits will be subject to all prior water rights. Protests may be submitted based on the criteria of Sec 42 203A, Idaho Code.

Any protest against the approval of this application must be filed with the Director, Dept. of Water Resource, Western Region, 2735 Airport Wy, Boise ID 83705 together with a protest fee of \$25.00 for each application on or before 03/10/2003. The protestant must also send a copy of the protest to the applicant.

KARL J DREHER, Director

## NOTICE OF PROPOSED CHANGE OF WATER RIGHT TRANSFER NO. 70276

DEBORAH S EDWARDS  
PO BOX 91  
MURPHY ID 83650  
JOHN D EDWARDS  
PO BOX 91  
MURPHY ID 83650, has filed Application No. 70276 for changes to the following water rights within OWYHEE County:  
Right No. 57-1B

Priority 4/1/1881  
Source SINKER CREEK  
Use IRRIGATION (244 acres) 5.14 CFS  
Total Amount 5.14 CFS  
Point(s) of Diversion S21 T03S R01W  
Place of Use S14 T03S R01W S15 T03S R01W S22 T03S R01W S23 T03S R01W  
Right No. 57-2295

Priority 8/3/1966  
Source GROUND WATER  
Use IRRIGATION (31 acres) 0.62 CFS 139.5 AFA  
Total Amount 0.62 CFS 139.5 AFA  
Point(s) of Diversion S15 T03S R01W S22 T03S R01W  
Place of Use S22 T03S R01W S23 T03S R01W  
Right No. 57-2236

Priority 12/11/1959  
Source GROUND WATER  
Use IRRIGATION (160 acres) 3.20 CFS 1,098.0 AFA  
Total Amount 3.20 CFS 1,098.0 AFA

Point(s) of Diversion S15 T03S R01W S22 T03S R01W  
Place of Use S14 T03S R01W S15 T03S R01W S22 T03S R01W S23 T03S R01W  
Remark: Applicant proposes a combined sprinkler irrigation system using Sinker Creek water diverted in the SENE S21 and ground water diverted from two existing wells in the SESW S15 and NENW 22 and one proposed well in the NENW S22. When combined, the rights are limited to 5.14 cfs and irrigation of 244 acres within a 304 acre permissible place of use in sections 14, 15, 22 and 23 T3S R1W.  
Protests may be submitted based on the criteria of Sec 42-222, Idaho Code.

Any protest against the proposed change must be filed with the Department of Water Resources, Western Region, 2735 Airport Wy, Boise ID 83705 together with a protest fee of \$25.00 for each application on or before March 10, 2003. The protestant must also send a copy of the protest to the applicant.

KARL J DREHER, Director

2/19,26/03

## NOTICE OF HEARING PUBLICATION Case No: CV-2003-01806 IN THE DISTRICT COURT OF THE THIRD JUDICIAL DISTRICT OF THE STATE OF IDAHO, IN AND FOR THE COUNTY OF OWYHEE

In the Matter of the Estate of MERL WILSON KYGAR, a.k.a. MERL WILSON KYGER, a.k.a. MERL W. KYGAR, Deceased Person.

1. NOTICE IS HEREBY GIVEN that on the 29<sup>th</sup> day of January, 2003, LOLA MAY KYGAR filed with this Court a Petition for Administration of Estate Where Spouse is Sole Beneficiary.
2. A copy of the Petition is on file with the Clerk of the Court and may be reviewed upon request.
3. The Petition has been set for hearing in the court at Homedale, Idaho, on

Wednesday, the 19<sup>th</sup> day of March, 2003 at the hour of 10:30 o'clock a.m.  
DATED: 3<sup>rd</sup> day of February, 2003.  
LOLA MAY KYGAR, Petitioner.  
David E. Kerrick  
1001 Blaine Street  
Post Office Box 44  
Caldwell, ID 83606-0044  
Telephone: 208-459-4574  
Facsimile: 208-459-4573  
2/12,19,26/03

## NOTICE OF APPLICATIONS FOR AMENDMENTS OF WATER PERMITS

Three amendment applications have been filed with the Department of Water Resources to change diversion points for permits in Owyhee County (all in T2S, R2W, Section 9, SE °, Eagle View Estates Subdivision) recorded as follows:

**Permit 57-11610 for Eagle View Estates HOA #4**, HC 79 Box 323, Melba ID 83641 authorizes 0.47 cfs for 4 homes and 20 acres.

**Permit 57-11611 for Dennis Robison**, HC 79 Box 312, Melba ID 83641 authorizes 0.12 cfs for 1 home and 5 acres.

**Permit 57-11612 for Christine & Richard Wawock**, 15441 War Eagle Road, Murphy ID 83650 authorizes 0.12 cfs for 1 home and 5 acres.

All permits describe one well for a total of 6 homes and 30 acres of irrigation. All priorities are 10-18-1994. Combined amount of water is 0.71 cfs.

**PROPOSED AMENDMENTS**  
Permit 57-11610 will use the above described well and add a second well nearby for its use. Permit 57-11611 will utilize its own well at the applicant's property. Permit 57-11612 will utilize its own well at the applicant's property. A total of 4 wells will be used under the permits as described herein.

Permits will be subject to all prior water rights. Protests may be submitted on the criteria of Sec 42-203(A) and 42-211, Idaho Code. Any protest against approval of the applications must be filed with the Director, Department of Water Resources, Western Region, 2735 Airport Way, Boise ID 83705-5082, together with a protest fee of \$25 for each application on or before March 10, 2003. The protestant must also send a copy of the protest to the applicant.

Karl J. Dreher, Director

2/19,26/03

## NOTICE OF BOARD MEETING

The Southwest District Board of Health will hold a **Board Meeting** on Tuesday, February 25, 2003 from 9:00 a.m. to 12:00 noon at the Southwest District Health, Room 200, 920 Main Street, Caldwell, Idaho.

2/19/03

Have  
a news tip?  
*Call us!*  
**337-4681**

Grand View Irrigation Financial Statement Year Ending December	
Cash on Hand 12/31/01	\$66,248.32
Receipts	110,753.73
Interest (State Investment Pool)	3,163.82
Total	\$180,165.87
Salary	26,300.00
Labor	556.21
Director Fee	680.00
Equipment Repairs	2,244.04
Insurance	8,536.76
Magnacide and Weed Control	24,830.30
Material and Supplies	889.95
Office/Shop Supplies and Utilities	4,042.50
Taxes	2,323.06
Audit/Legal	1,770.75
Fuel	3,115.13
Pick Up Purchase	15,550.91
Idaho Power	406.35
Freight/Magnacide	945.50
Machine Hire	1,575.00
Canal Maintenance	3,308.60
Water Measurement Account	10,000.00
Total Expenses	\$107,075.06
Cash on Hand 12-31-02	\$85,664.05
Warrants Redeemed	561.95
Warrants Outstanding	-13,135.19
To Balance	\$180,165.87
Annual Financial Report Year Ending December 31, 2002	
Assets	
Cash on Hand	\$85,664.05
Fixed Assets	
Equipment	68,386.00
Real Estate	20,000.00
Liabilities and Surplus	\$174,050.55
Operation Warrants During Fiscal Year	
Warrants Issued During Year	\$107,075.06
Warrants Redeemed During Year	561.95
Warrants Outstanding	-13,135.19
Cash on Hand 12-31-2002	85,664.05
To Balance	\$180,165.87
I Dixie McDaniel, Secretary-Treasurer of the Grand View Irrigation district, hereby certify that the foregoing is a full, true and correct Statement of the Financial Operation of the Grand View Irrigation District covering a period of one year, and represents to the best of my knowledge, information and belief the financial condition of the district, at the close of the fiscal year December 31, 2002.	
Dixie McDaniel Secretary-Treasurer Mark Frost, Chairman Arnold Hipwell Doug Thurman Dated February 4, 2003	

2/19/03

# Graduation Announcements

by stylart®

Be at the top of the class with classy graduation announcements by Stylart. We also carry a complete line of graduation accessories.

*Come in today!*

Many announcements include photos!

## The Owyhee Avalanche

**337-4681**



# Public notices

THOMAS E. MOSS  
UNITED STATES ATTORNEY  
**ALAN G. BURROW**  
ASSISTANT UNITED STATES  
ATTORNEY  
FLORIDA STATE BAR  
#FL1327921  
DISTRICT OF IDAHO  
WELLS FARGO CENTER  
877 WEST MAIN STREET,  
SUITE 201  
BOISE, IDAHO 83702  
MAILING ADDRESS: BOX 32  
BOISE, IDAHO 83707  
TELEPHONE: (208) 334-1211  
FACSIMILE: (208) 334-1414  
Attorney for Plaintiff

**NOTICE OF MARSHAL'S  
SALE**  
**CV99-0293-S-MHW**  
**UNITED STATES**  
**DISTRICT COURT FOR THE**  
**DISTRICT OF IDAHO**  
UNITED STATES OF  
AMERICA, Plaintiff, vs.  
LEONARD J. BLOSSOM AND  
WILMA BLOSSOM, Husband and  
Wife, Defendants

Under and by virtue of an  
Amended Order of Default  
Judgement and Decree of  
Foreclosure rendered out of the  
United States District Court for the  
District of Idaho, and filed on the  
7<sup>th</sup> of August, 2001, and the Order  
of Sale being issued on the 10<sup>th</sup> day  
of January, 2003 in the above-  
entitled action, wherein the United  
States of America, the above-named  
Plaintiff, obtained a judgment  
against the Defendants Leonard J.  
Blossom and Wilma Blossom in the  
amount of  
**\$48,199.88** plus costs and interest  
as specified in said decree;

I am commanded to sell the  
personal property situated in  
Owyhee County, State of Idaho, as  
one sale parcel as described below:  
1 baler NH Model 315 1970  
SN#28860  
1 swather NMH model 1970 Pull  
114  
1 baler NH Model 426 1989  
SN#771122  
1 tractor/loader White Model Z-  
62 1985 SN#00794

**NOTICE IS HEREBY GIVEN**  
that on the **6<sup>th</sup> day of March, 2003**  
at **11:30 am** of said day, (or if the  
United States Marshal is  
unavoidably detained, immediately  
upon his arrival) on the front steps  
of the Owyhee County Courthouse,  
Murphy, Idaho, I will sell the  
heretofore-described personal  
property to the highest and best  
bidder for cash in lawful money of  
the United States of America.

The terms of the sale are as  
follow: A personal check in the  
amount of ten percent (10 percent)  
of the bid will be accepted at the  
time of the sale, with a certified or  
cashier's check for the full amount  
of the bid to be delivered to the  
United States Marshal within 24  
hours of the time of the sale. Upon  
delivery of the aforementioned  
certified or cashier's check, the  
personal check will be returned. If  
the full purchase price has not been  
received within 24 hours of the  
time of the sale, the ten percent (10  
percent) deposit will be forfeited to  
the United States Marshal to offset  
costs involved. The United States  
and only the United States may  
enter a credit bid at the sale of the  
personal property up to the amount

of the judgment and costs and  
interest as set forth in the judgment.  
DATED this 5<sup>th</sup> day of February,  
2003

PATRICK E. MCDONALD  
United States Marshal  
for the District of Idaho  
2/12,19,26-3/5/03

## NOTICE OF TRUSTEE'S SALE

On Friday, the 6<sup>th</sup> day of June,  
2003, at the hour of 10:00, o'clock  
a.m. of said day (recognized local  
time), at Owyhee County  
Courthouse located at HWY 78,  
Murphy, ID 83650, in the County  
of Owyhee, State of Idaho, Michael  
L. Schindele, as Successor Trustee,  
will sell at public auction, to the  
highest bidder, for cash, in lawful  
money of the United States, all  
payable at the time of the sale, the  
following described real property,  
situated in the County of Owyhee,  
State of Idaho, and described as  
follows, to-wit:

See Exhibit "A" which is attached  
hereto and by this reference made a  
part of.

The Trustee has no knowledge of  
a more particular description of the  
above-referenced real property, but  
for purposes of compliance with  
Idaho code, Section 60-113 Idaho  
Code, the Trustee has been informed  
that the address of 406 1/2 North  
Edison Rd., Marsing, ID 83639 may  
sometimes be associated with said  
real property.

Said sale will be made without  
covenant or warranty regarding  
title, possession or encumbrances  
to satisfy the obligation secured by  
and pursuant to the power of sale

conferred in the Deed of Trust  
executed by Michael J. Cook and  
Vicki L. Cook, husband and wife,  
as Grantor(s), to Pioneer Title  
Insurance Company, as Trustee,  
Michael L. Schindele, as Successor  
Trustee, for the benefit and security  
of American General Finance, Inc.,  
as Beneficiary, said Deed of Trust  
dated March 25, 2002, and recorded  
March 26, 2002, as Instrument No.  
239072, Mortgage Records of  
Owyhee County, Idaho.

THE ABOVE GRANTORS  
ARE NAMED TO COMPLY  
WITH SECTION 45-1506(4)(A)  
IDAHO CODE. NO  
REPRESENTATION IS MADE  
THAT THEY ARE, OR ARE NOT,  
PRESENTLY RESPONSIBLE  
FOR THIS OBLIGATION.

The default for which this sale is  
to be made is the failure to pay  
when due, under Deed of Trust Note  
dated March, 25, 2002, the monthly  
payments for principal, interest and  
impounds of \$354.60, for the  
month(s) of October 19, 2002,  
through the current month and year,  
and all subsequent payments until  
the date of sale or reinstatement  
with all accrued interest, late  
charges and expenses. The Principal  
balance owing as of this date on the  
obligation secured by said Deed of  
Trust is \$31,599.00, plus accruing  
interest. All delinquent payments  
are now due, together with accruing  
late charges and interest, unpaid  
and accruing taxes, assessments,  
trustee's fees, attorney's fees, and  
any amounts advanced to protest  
the security associated with this  
foreclosure and that the Beneficiary  
elects to sell or cause the trust

property to be sold to satisfy said  
obligation.

DATED this 3<sup>rd</sup> day of February,  
2003.

MICHAEL L. SCHINDELE  
Successor Trustee  
P.O. Box 1990  
Boise, Idaho 83701  
Telephone: (208) 342-2241  
EXHIBIT A

The land referred to in this  
commitment/policy is situated in  
the State of Idaho, County of  
Owyhee and is described as follow:

BEGINNING at the Southeast  
corner of Section 29, Township 3  
North, Range 4 West, Boise  
Meridian, Owyhee County, Idaho;  
thence

North 378.00 feet to a point;  
thence

West 25.00 feet to the TRUE  
POINT OF BEGINNING; thence

North 150.00 feet; thence

West 75.00 feet; thence

South 150.00 feet; thence

East 75.00 feet to the TRUE  
POINT OF BEGINNING.

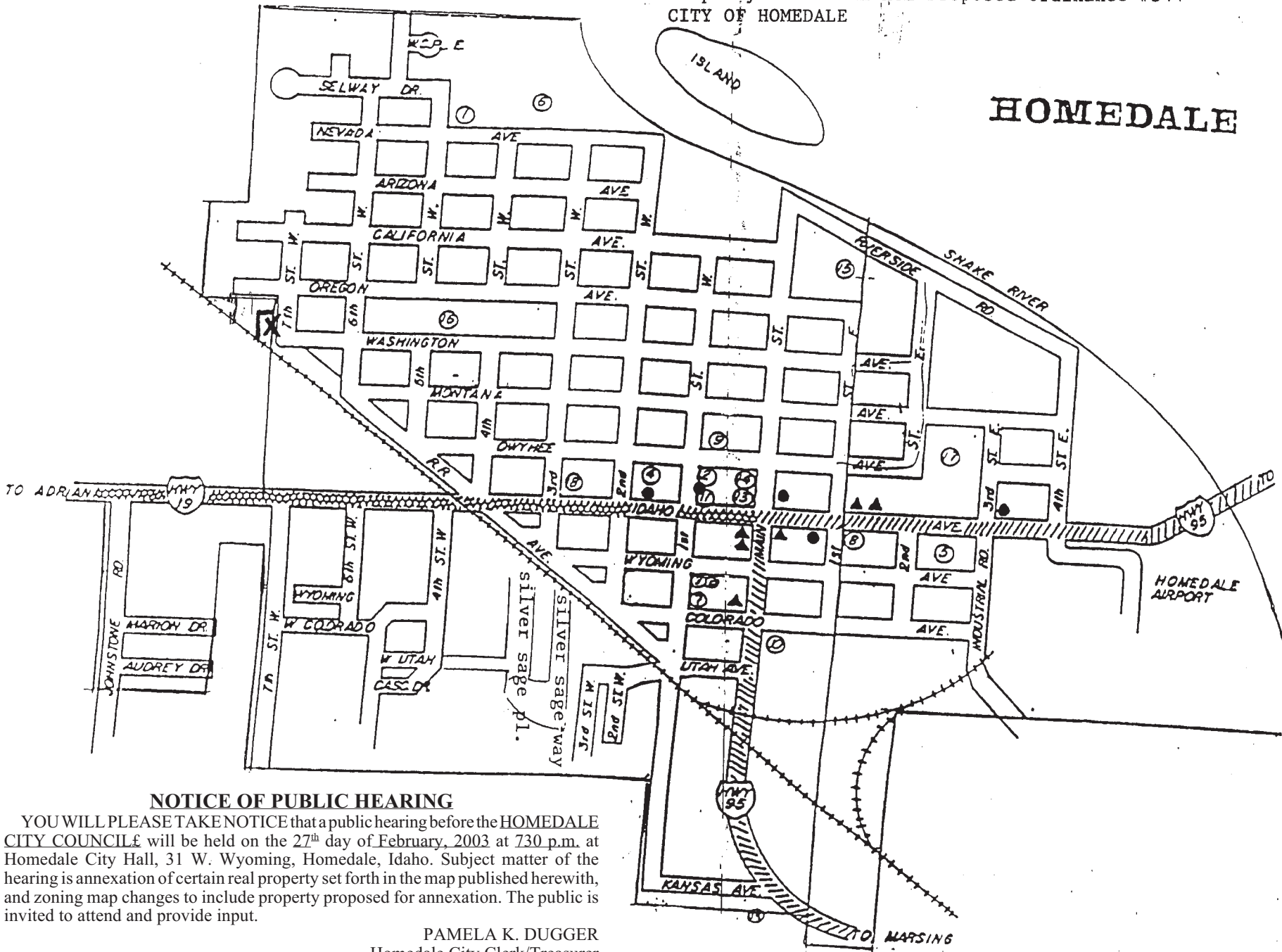
2/12,19,26-3/5/03

# Keep informed

Read

*The Avalanche*

X - Property to be annexed Proposed Ordinance #344  
CITY OF HOMEDALE



## NOTICE OF PUBLIC HEARING

YOU WILL PLEASE TAKE NOTICE that a public hearing before the **HOMEDALE CITY COUNCIL** will be held on the 27<sup>th</sup> day of February, 2003 at 730 p.m. at Homedale City Hall, 31 W. Wyoming, Homedale, Idaho. Subject matter of the hearing is annexation of certain real property set forth in the map published herewith, and zoning map changes to include property proposed for annexation. The public is invited to attend and provide input.

PAMELA K. DUGGER  
Homedale City Clerk/Treasurer



# Public notices

## NOTICE OF TRUSTEE’S SALE

On the 21<sup>st</sup> day of **May, 2003**, at the hour of **10:45 A.M.**, of said day, (recognized local time), in the **lobby of the Owyhee County Courthouse, Murphy**, in the County of Owyhee, State of Idaho.

First American Title Company of Idaho, Inc., an Idaho Corporation, as successor trustee, will sell at public auction, to the highest bidder, for cash or cashiers check (cash equivalent), in lawful money of the Untied States, all payable at the time of sale in compliance with Section 45-1506(9) Idaho Code, the following described real property, situated in the county of Owyhee, State of Idaho, and described as follow, to-wit:

Lot 7 and 8 of **JAKUBOWSKI SUBDIVISION**, in Government Lots 4 and 5, Section 7, T1N R3W, B.M., Owyhee county, according to the official plat thereof filed July 9, 1984 as Instrument No. 181411, Owyhee County records.

The Trustee has no knowledge of a more particular description of the above referenced real property, but for the purposes of compliance with Section 60-113 Idaho Code, the Trustee has been informed that according to the County Assessors office, the address of **HC 79 Box 1125, Melba**, Idaho, is sometimes associated with said real property.

Said sale will be made without covenant or warranty regarding title, possession or encumbrances to satisfy the obligation secured by and pursuant to the power of sale conferred in the deed of trust executed by **LUCINDA J ESLICK, an unmarried person**, as grantor, to **FIRST AMERICAN TITLE COMPANY OF IDAHO, INC.**, an Idaho Corporation, as successor trustee, for the benefit and security of **M and T Mortgage Corporation**, as beneficiary, recorded **May 30, 2001**, as Instrument No. **236008**, and assigned to **WELLS FARGO HOME MORTGAGE, INC.**, as beneficiary, by assignment recorded **July 23, 2001**, as Instrument No. **236571**, Mortgage Records of Owyhee County, Idaho.

THE ABOVE GRANTORS ARE NAMED TO COMPLY WITH SECTION 45-1506 (4)(A), IDAHO CODE. NO REPRESENTATION IS MADE THAT THEY ARE, OR ARE NOT, PRESENTLY RESPONSIBLE FOR THIS OBLIGATION.

The default for which this sale is to be made is the failure to pay when due, under Deed of Trust Note, the monthly payments for Principal, Interest and Impounds of \$1,175.70, due per month for the months of September through November, 2002 and all subsequent payments until the date of sale or reinstatement, with a monthly late charge accruing at \$47.58, with interest accruing at 7.25 percent per annum, and continuing to accrue from August 1, 2002. The principal balance owing as of this date on the obligation secured by said Deed of Trust is \$137,914.84, plus accruing interest, costs and advances. All delinquent amounts are now due, together with accruing late charges and interest, unpaid and accruing taxes, assessments, trustee’s fees, attorney’s fees, and amounts advanced to protect the security associated with this foreclosure and that they beneficiary elect to sell or cause the trust property to be sol to satisfy said obligation.

Date: January 16, 2003

FIRST AMERICAN TITLE COMPANY OF IDAHO, INC.  
Elishia M. Ricky Trust Officer.  
FA-15157/7023.26095

1/29-2/5,12,19/03

## NOTICE OF TRUSTEE’S SALE \*MB312840233000000 Trustee’s Sale No. 02-MB-31284

Notice is hereby given that, Alliance Title & Escrow Corp., the duly appointed Successor Trustee, will on June 19, 2003, at the hour of 10:00 AM, of said day, on the steps of the Owyhee County Courthouse, Corner of State Highway 78 and Hailey Street, Murphy, ID, sell at public auction to the highest bidder, for cash, in lawful money of the United States, all payable at the time of sale, the following described real and personal property (hereafter referred to collectively as the “Property”), situated in the County of Owyhee, State of Idaho, to-wit: EXHIBIT “A” Lot 6 of Jakubowski Subdivision in Government Lots 4 and 5, Section 7, Township 1 North, Range 3 West of the Boise Meridian, Owyhee County, Idaho; as shown on the plat of record in the office of the Owyhee County Recorder as Instrument No. 181411. Excepting therefrom one-half of all oil, gas and other minerals of every kind and nature as reserved in the deed from Jack E. Dietrich, etux, recorded November 12, 1981 as Instrumental No. 170645, Owyhee County Records. The Trustee has no knowledge of a more particular description of the above-referenced Property but, for purposes of compliance with Section 60-113 of Idaho Code, the Trustee has been informed that the address of HC 79 Box 1128 Campbell Rd, aka HC 79 Box 1128, Melba, ID 83641, is sometimes associated with said real property. Said sale will be made without covenant or warranty regarding title, possession or encumbrances to satisfy the obligation secured by and pursuant to the power of sale conferred in the Deed of Trust executed by Steve Peters, a single man and Sheila Tiegs, a single woman, as Grantor, to Pioneer Title, as Trustee, for the benefit and security of DMI, Inc., as Beneficiary, dated 2/21/2001, recorded 2/23/2001, under Instrument No. 235115, Mortgage records of Owyhee County, Idaho, the beneficial interest in which is presently held by Deutsche Bank National Trust Company as Trustee under the Pooling and Servicing Agreement Series 2001-A. The above Grantors are named to comply with Section 45-1506(4)(A), Idaho Code. No representation is made that they are, or are not, presently responsible for this obligation. The default for which is sale is made is the failure to pay when due under the Deed of Trust Note dated 2/21/2001, the monthly payment which became due on 9/1/2002 and all subsequent monthly payments, plus late charges and other costs and fees as set forth. Amount due as of February 12, 2003 Delinquent Payments from September 01, 2002 6 payments at \$868.71 each \$5,212.26 (09-01-02 through 02-12-03) Late Charges: \$292.72 Beneficiary Advances: \$0.00 Total: \$5,504.98 All delinquencies are now due, together with unpaid and accruing taxes, assessments, trustee’s fees, attorney’s fees, costs and advances made to protect the security associated with this foreclosure. The principal balance is \$79,188.81, together with interest thereon at 10.500% per annum from 8/1/2002, until paid. The Beneficiary elects to sell or cause the trust property to be sold to satisfy said obligation. Dated: December 22, 2002 **Alliance Title & Escrow Corp. Trustee** By Teresa Hopkins, Trust Officer c/o Regional Trustee Services Corporation, 720 Seventh Avenue, Suite 400, Seattle, WA 98104 Phone: (206) 340-2550 Sale Information: <http://www.rtrustee.com> ASAP522431

2/19,26-3/5,12/03

For FAST results...

try the

*Classifieds!*

## OWYHEE COUNTY BOARD OF COMMISSIONERS MINUTES FOR FEBRUARY 3, 2003 COURTHOUSE, MURPHY, IDAHO 9:30 A.M.

Present were Commissioner Hal Tolmie, Commissioner Dick Reynolds, Commissioner Chris Salove, hearing Officer Fred Kelly Grant, Deputy Clerk Kay Kelly Breach.

The hearing on the Poison Creek Road also known as the Sands Basin Road was held.

Commissioner Salove made a motion to deny Case # 02-45 for medical assistance. The motion was seconded by Commissioner Reynolds.

Commissioner Salove moved a lien be filed on Case # 03-04. The motion was seconded by Commissioner Reynolds.

Commissioner Salove moved for adjournment at the conclusion of the Poison Creek Road Hearing. Commissioner Reynolds seconded the motion.

Harold Tolmie Chairman,  
Board of County Commissioners  
Attest: Charlotte Sherburn, Clerk

2/19/03

## OWYHEE COUNTY BOARD OF COMMISSIONERS MINUTES FOR MONDAY JANUARY 27, 2003 COURTHOUSE, MURPHY, IDAHO 10:00 A.M.

Present were Commissioner Harold Tolmie, Commissioner Dick Reynolds, Commissioner Chris Salove, Clerk Charlotte Sherburn, Assessor Brett Endicott, Sheriff Gary Aman, Treasurer Barbara Wright, Jim Desmond, Fred Grant.

A motion was made by Commissioner Salove to amend the agenda to include Request for Private Road Name for two parties. Commissioner Reynolds seconded the motion. An amendment for NRC director Jim Desmond to submit a comment on a request from Department of Interior.

Treasurer Barbara Wright requested a Cancellation on Parcel No PP 5900109 in the amount of \$1,663.33 for 2002, this property was double assessed. The Treasurer requested a Cancellation on Parcel No. RP 009200010120 A for 2002 Tax \$226.80, Penalty \$2.27 there was a double assessment made. Commissioner Salove moved for cancellation of taxes, Commissioner Reynolds seconded the motion.

Ruth Knox requested a private lane name of West Canal Lane. The Board approved the name. Jesse Rubelt requested a private lane name of Rubelt Lance. The commissioners approved the name.

Natural Resources Director Jim Desmond met with the Board. The Board authorized the director to prepare and submit comment of Dept of Interior request for Categorical Exclusions for Fire management projects under the National Environmental Policy Act. NRC Director reported on current developments in the development of two new BLM Resource Management Plans. NRC Director reported on the Fish and Wildlife Service decision to deny the petition for listing Mountain Quail as an endangered species. The Board discussed inviting BLM State Director K Lynn Bennett to meet

with the Commissioners on February 14<sup>th</sup> at they’re Coordination meeting.

Jared Zwygart from Bailey and Company presented the County Audit to the Board.

Indigent and Charity Case # 02-07, 02-20 release of Lien. Motion by Chris Salove, seconded by Dick Reynolds. Case # 03-03 Lien was placed Motion by Chris Salove, seconded by Dick Reynolds. Case # 02-44 Denied imcomplete application. Motion by Dick Reynolds, seconded by Chris Salove.† Case # 02-33 St. Al’s requested continuance of hearing for 3/10/03. Motion by Chris Salove, seconded by Dick Reynolds.

The Board approved a catering permit for Owyhee Cattleman’s.

GPS Operator job description was reviewed and approved. The position will be paid at a Step 6-A. The Rural Addressing Maintenance Worker job description was reviewed and approved. This position will be piecework.

The Board watched a Power-Point presentation on a 256 Internet line presented by Bill Cameron from Computer Arts. He spoke of the cost savings and efficiency.

Dick Reynolds made a motion, not to endorse the GPS Road Inventory program presented by Holladay Engineering. Chris Salove seconded the motion.

A motion by Chris Salove to approve the Board Minutes for 1/21/2003. The motion was seconded by dick Reynolds.

The complete minutes are available for inspection in the office of Clerk-Auditor-Recorder.

Harold Tolmie, Chairman,  
Board of County Commissioners  
Attest: Charlotte Sherburn, Clerk

2/19/03

## PUBLIC NOTICE BEFORE THE OWYHEE COUNTY PLANNING & ZONING COMMISSION

On March 6, 2003 beginning at 7 PM the Owyhee County Planning and Zoning Commission will hold its regular meeting in the County Annex on Basey Street in Murphy, Idaho. After dispensing with old business, the Commission will hear public testimony on the following matter.

STEPHEN A. AND MICHELLE N. TRULOVE have filed an application for a conditional use permit to build a house on 5.99 acres. Subject property is located South East of Marsing on Birmingham Road in Section 6, Township 1 North, Range 3 West, Boise Meridian, Owyhee County, Idaho

BLAINE AND JUDY LEFFLER have filed an application for a conditional use permit to split two 3 acre parcels for residential use from an existing 33 acre parcel. Subject property is located South of Marsing off of Highway 78 in Section 36, Township 2 North, Range 4 West, Boise Meridian, Owyhee County, Idaho

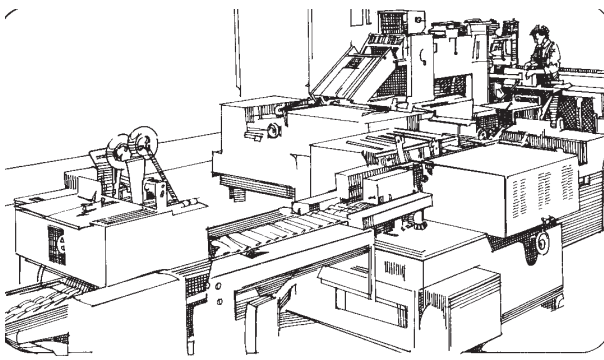
2/19/03

# Keep informed

Read

*The Avalanche*

## WE MAKE A GREAT IMPRESSION



### You'll be impressed by the quality of our work and our personalized service

We're a multi-faceted print shop providing complete services from graphic design and typesetting through printing and binding, so no part of your job ever leaves our hands.

We offer consistent results at competitive prices.

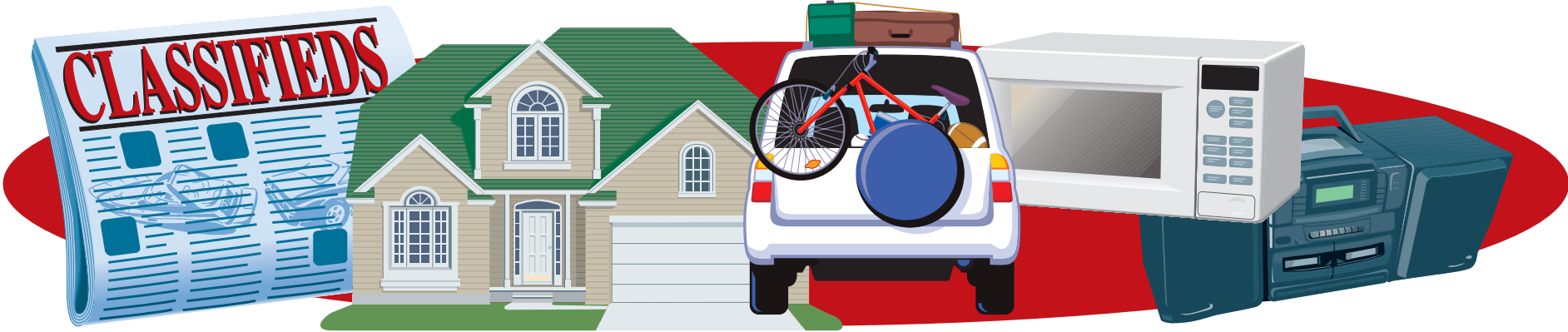
## 337-4866

*All types of web and commercial printing*

# Owyhee Publishing

P.O. BOX 217 HOMEDALE, ID 83628





AUCTIONS

TOM ARIMA ROW CROP EQUIPMENT  
RETIREMENT AUCTION  
MONDAY, FEBRUARY 24, 2003

Located from Homedale ID. 2 miles South on Hwy 95 to Market Rd then 1/2 mile West.  
Signs posted.

Sale Starts 11:00 AM/MT Lunch served.  
Terms: Cash or Bankable check sale day. No Buyer's premium. No Credit Cards.  
**TRACTORS** JD 4030, deluxe cab, syncro trans, convertible front, 14.9 X 38 rubber • IHC 1066, cab, hydro, 18.4 X 38 rubber • M F 150 diesel, single front, 13.6 X 38 rubber • JD front mount 3pt • set of 13.6 X 38 duals • set of 9.5 X 48 duals  
**COMBINES** JD 6600, gas, 14' head • bean head pickup • Lilliston 6200 bean combine 5 bar • Lockwood 835 bean windrower • Speedy 6 row bean cutter  
**TRUCKS** 1975 Chevy, tandem, V-8, 5spd 4spd w/20' combination bed & harsh hoist • 1977 Chevy, single axle, V-8, 5spd 2spd, 16' flatbed, 44K miles • 1951 Chevy w/beet bed • 1946 Chevy w/beet bed • Honda 90 trail bike  
**ONION EQUIPMENT** Top Air 4 row onion topper, 220 total acres • Curl onion loader, fan, steerable axle • Parma 6 row PTO onion lifter • 330- 4 X 6 X 30 onion bins, exc cond. • Approx 40 onion baskets  
**TILLAGE** Ace 3 bottom high clearance spinner plow • IH 37 10' tandem disc • Miskin 2yd scraper • 10' 3K cultivator • 10' Brillion roller harrow • Meyers 3pt hyd ditcher 6 row bed harrow w/expanded metal roller • 3 section cultipacker • 3 section 5' metal harrow w/lead bar • 6 section 5' wood harrow w/lead bar • 5 row Valley Mound corrugator • set of hyd markers • 3- T bar cultivators • 3pt 10' CC cultivator • Ace beet harrow • Eversman 10' landplane • 12' Dandl shredder • 4 row JD sled corrugator • 3pt boom  
**PLANTERS** • Beck 6 double row onion planter • Beck 6 row beat planter • JD 70 6 row planter • JD 2 row spud planter • JD 10' grain drill w/seeder • 6 row Planet Jr. • PTO broadcast seeder  
**SPRAY EQUIPMENT** 150 gal SS 3pt sprayer, hyd pump w/24' booms • 1000 gal SS nurse tank • 150 gal pickup fuel tank • 285 gal fuel tank • 120 gal 3pt propane weed burner  
**SHOP & MISC EQUIPMENT** 5hp portable air compressor • shop heaters • riding lawn mower • JD 9 mower • McCormick horse drawn mower • JD side rake • 15 ton shop press • 1 1/2" siphon tubes • hyd cylinders, shanks, clamps & other cultivator tools.  
This is a very clean line of equipment, well cared for & maintained.  
For colored pictures of this and upcoming auctions please check our website @ [www.bakerauction.com](http://www.bakerauction.com)

**BAKER AUCTION CO.**  
**1-800-650-5808**  
ROGER BAKER Col. ELLIS ALBRIGHT  
541-889-5808 208-466-0169  
BOB HOGG J.B. SALUTREGUI SAM BAKER  
208-549-1980 541-212-3278 541-889-8413  
Visit our website at: [www.bakerauction.com](http://www.bakerauction.com) for colored pictures & full listing of this and upcoming auctions.

Rubber  
Stamps

Made to order  
The  
Owyhee  
Avalanche  
337-4681

WANTED

**Wanted:** Peacocks 896-4671  
**Going to prison?** Elderly gentlemen in Homedale area looking for ride-share to ICC Prison to visit inmate; will pay gas. Call Gary at 482-7653

BUS. OPP.

**\$\$ Your hours = The Boss' Fortune!** Create your own serious income with your own home-based business! Free booklet. Full training. [www.yourlifewaits.com](http://www.yourlifewaits.com) 800-440-2183

For FAST results...  
try the  
*Classifieds!*

HELP WANTED

**CNA needed** for in-home care, call for info 337-5343  
**Owyhee County Clerk's office** is accepting applications for the position of Deputy Clerk. This position is full time with full time benefits. Applications and a complete job description can be picked up at the Owyhee County Clerk's office at the Courthouse in Murphy until February 28, 2003 at 5:00 p.m. Owyhee County is an equal opportunity employer.

FOR RENT

**At Pioneer Mobile Home Park**, large lot in country park 2 miles from Homedale. Home must be 1990 or newer. Trash/water/septic tank paid. \$165/mo +\$165/deposit. Space also has a dog kennel. 208-337-4589.

**Apartment 1 bdrm 1 bath** \$300 per mo. new carpet and paint, 220 Montana Apt. # 5, 337-3474

**Senior Citizen housing available** at Westfield Plaza in Wilder, 1 bdrm apartments to qualified renter, rent rate based on income level. Call 482-7750 for further info. Equal housing opportunity.  
**2 MH south of Marsing 2 bdrm** \$300. a month, 3 bdrm \$350. a month. Call 896-5667 or 896-5038 or 989-1055

**Quiet in country 1 bdrm home** near Graveyard Point. \$300 plus deposit 337-5125

**2 bdrm mobile home w/garage**, pets ok \$425 + \$200 deposit 896-5639

**Homedale 3 bdrm 1.5 bath** fenced mobile home w/range \$450 + deposit + references. 337-3873  
**10x10 and 5x10 storage units** available, also RV and boat storage. Marsing Storage, Inc. 343-9855 or 867-2466

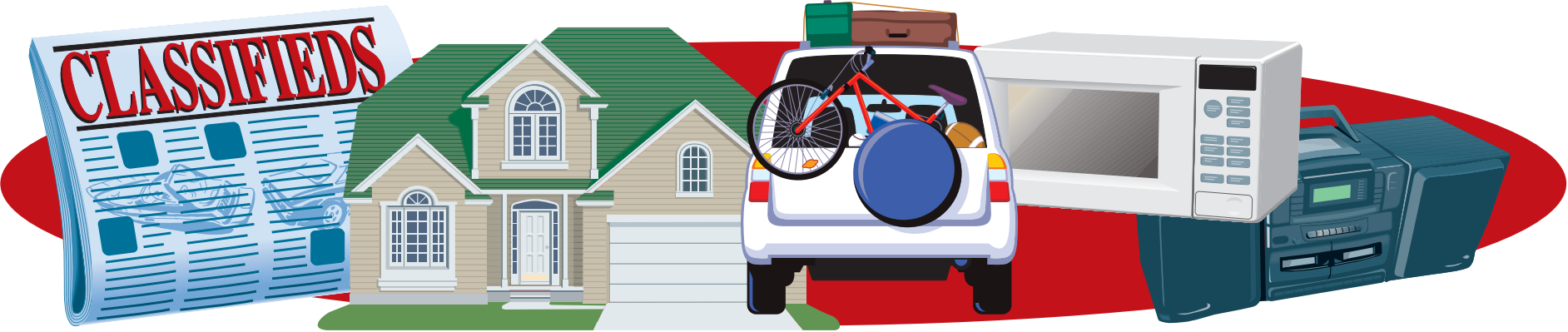
**SPACES FOR RENT**  
**HOMEDALE'S NICEST MOBILE HOME PARK**  
• Spacious single or double wide spaces  
• Convenient to shopping, schools & city services  
• Clean, quiet family park  
• On site manager  
• Water/Sewer/Trash provided  
• Cable T.V. Available  
• Will accept older homes in good condition  
(We also have mobile homes for sale ready to move into NOW with low down payment)  
**Sunset Village**  
**Mobile Home Park**  
401 S. Main • Homedale, Idaho  
**See managers space #42**  
**(208) 337-5804**  
or 884-1700

**HOMEDALE GARDEN APARTMENTS**  
FOR SENIOR CITIZENS and/or HANDICAPPED OR DISABLED PERSONS  
**RENT BASED ON INCOME**  
USDA/RURAL DEVELOPMENT FINANCED  
GIVE US A CALL: (208)337-4715  
409 SOUTH FIRST WEST  
HOMEDALE, IDAHO  
83628

**19.5 ACRES REAL ESTATE AUCTION**  
28490 Scott Pit Rd., Parma, Idaho  
**Wednesday, March 5, 2003 1:00 PM**  
**OPEN HOUSE Saturday, March 1 1:00 to 3:00 pm**  
• 3 Bedrooms  
• 2 Baths  
• 1246 sq. ft.  
• 1999 MFG Home on a Foundation  
• 1 Year Home Warranty  
• Georgeous Mountain Views  
Outdoorsman Paradise located on a raised bench in the McConnell Island District. Near the confluence of the Boise and Snake Rivers. Wildlife abounds.  
Call for Auction Terms and Property Information:  
Rich Pickett-208-250-4767  
Steve Cordell-208-941-7871  
Pickett Auction Service: 455-1419  
Silverhawk Realty: 459-4326  
[www.pickettauctions.com](http://www.pickettauctions.com)  
Take a Virtual Tour at [www.idahoproperties.org](http://www.idahoproperties.org)

**FARM EQUIPMENT AUCTION**  
**MONDAY, MARCH 3, 2003 - 11:00 A.M.**  
**Located:** From Marsing, Idaho go west 2 miles on HWY 55 to 95 Junction. Auction in field north of junction. Signs posted.  
**Terms:** Cash or bankable check on sale day. Nothing to be removed until settled for. All property sold as is. Lunch available. Free coffee. **No Buyer's Premiums!**  
**Tractors and Combine** JD 4440 Diesel Tractor 4WD, Quad Range Trans, Cab and Air, 3 Remotes, 14.9.46 Rubber, Front WTS, (less than 300 hours on new overhaul); IHC 3788 2+2 Diesel Tractor, Cab and Air, STD Trans, 4 Remotes, 18-4-38 Rubber, less than 700 hours on complete rebuilt motor (180 HP); IHC 86 Hydro Diesel Tractor, Cab and Air, 2 Sets Remotes, 13.6.38 Rubber, Wide front (4400 hours); IHC 3088 Diesel Tractor, STD Trans, 15.5.38 Rubber, Wide Front, 3 Remotes, New Paint (good shape); Ford New Holland 6635 Diesel Tractor, 18-4-30 Rubber, Wide Front, Cab and Air, Two Remotes, (sharp); JD 7720 Diesel Combine, Cab and Air, W/218 Grain Platform w/Stainless Steel Floor, New Rubber and New Unloading Augers  
**Trucks and Grain Trailer and Road Grader** 1977 Chevy 1/2 Ton Pickup V-8, Long Box, 2WD; 1989 Chevy 1/2 Ton Short Box, 305 V-8, 5 Speed Trans, 2 WD, (motor needs work); 1974 Chevy C-60, V8, 4X2, Single Axle w/ 16' Combo Bed and Hoist; 1972 White Cab Over w/350 Cummings Diesel w/13 SPD RR Trans Tandem Axle w/20 Howard Steel Beet and Grain Bed; 1978 Trail Mobile 40' Grain Trailer Belly Dump w/near New Rollover Tarp; Austin Western Detroit Diesel 4 Wheel Drive Motor Grader  
**Planter's and Cultivators** JD 1730 Maxemerge Planter w/HYD Markers, Large Seed Hoppers, Chemical Boxes, and Monitor Grow 30" (like new); 8 Row V-22 Milton Planter Mounted on 17' Bar w/Gandy's; 6 Row 3 Pt. Dry Chem. Applicator Fiberglass Hoppers; Ace 24' Folding Bar w/3-2 1/4 Diamond Bars and Markers; Alloway S-Tine 12 Row Folding Cultivator w/Crop Shields and Disk's Knives; Orthman Stabilizer Rolling Fin; 6 Row Elmer's S-Tine Cultivator w/Shields, Disks; 400 21' 3 PT Rotary Hoe; JD 400 15' 3 PT Rotary Hoe; 6 Row 17' Double Diamond Bar w/A Frames Sweeps, Shovels; Lilliston 6 Row 3 Spider Bean and Corn Cultivator; Lilliston 6 Row (22") 3 Spider Beet and Bean Cultivator  
**Onion Equipment** Beck 6 Double Row Onion Planter w/Poly Seed Hoppers and Gandys; Top Air 4 Row Onion Topper; Parma 3 PT Onion Fluffer; 3PT PTO Onion Lifter; Parma Onion Loader HYD Control Bank  
**Ground Working Equipment** Case-IH 145 4 bottom Trip Beam Plow (good shape); Ace 16' Groundhog Smyser Front Pipe Back w/Leveling Bar (Long Tongue); JD 960-20' HYD Fold HD Triple K w/Gauge Wheels (good shape); IHC #10 5 Prong Long Shank Ripper w/Guage Wheels; 8' Double Pack Plow Packer w/Plow Attachment; 14' Binkley Heavy Duty Off Set Disk; 12' Ace 3 PT Groundhog w/Leveling Bar and Pipe Roller; JD 4200 4 Bottom Plow; 2-15 Tire Rollers; 14' Ace Groundhog Smyser Front Pipe Back w/Leveling Bar (Long Tongue)  
**Sprayer Equipment** Ace 400 Gal Draw Bar Pull SS Tank and 60' SS Booms; Ace Front Mount 150 Gal SS Tank w/Manifold, Electric Shut Off; Ace Front Mount 150 Gal SS Tank; Ace 3 PT. HD 50' Booms w/No Drip Nozzles; 1500 Gal Poly Nurse Tank  
**Bee Board and Trailers** Approx. 1200 redrilled and cooked boards ready for this years crop; 10 good single axle 16x8 cutter bee trailers; 1 single axle 16x8 phase out trailer  
**Misc. Equipment and Duals** JD 1018 10' Rotary Beater Draw Bar Pull (very good cond); GEHL C-B 600 Field Chopper w/Hay Head; 3 PT 12' Double Diamond Bar w/Fertilizer Knives and Shanks; 1 Set HYD Markers (6 Row); 2 Sets 18.4.38 Duals w/Hubs; 1 Set 13.6.38 Duals; 1 Set 16.9.38 Duals; 1 Set 14.9.38 Duals; 1 Set 16.9.38 On JD Rims; 1 Set 12.6.46 Tire and Rims; 1 Set 11.2.38 Tire and Rims; 1 Set 9 Hole M and W 4440 Hubs  
**Irrigation** 2-1/4 Mile Hook and Latch 3" Hand Line; PTO Sprinkler Pump; 1000 Siphon Tubes 3/4-1"; Ditch Tins  
**Misc.** 2 HP 115 Volt High Pressure Washer; 5 HP Portable Air Compressor 22 Gal Tank; 1987 Honda Fourtrax 4 Wheeler; 10 HP B and S Generator; 16' Farm King 4" Grain Auger (like new); Misc. Clamps Shanks Shovels Gauge Wheels; Milton Planter Plates; Fuel Tank L Style w/Electric Pump; 16' Tandom Axle Trailer  
**Auctioneer Note:** This sale consists of 3 local farmers, 1 has sold his farm and 2 are changing direction in the crops that they grow this line of equipment is in good to very good condition. These gentlemen will be present the day of auction to represent their equipment.  
**Rudd Auction Company**  
16911 Garwet Rd. • Wilder, Idaho • 83676  
Lonnie Rudd Homedale, Idaho 208-337-4350 • 208-573-1687  
Darren Krzesnik Homedale, Idaho 208-337-4993  
Scooter Lacrone New Plymouth, Idaho 208-278-5475





FOR SALE

**Used tractor parts** 100's of salvaged farm tractors and combines. Nampa Tractor Salvage, 9055 Hwy 20, Nampa, ID 83687. (208) 467-4430.

**Roll ends:** Great for packing material, building fires, lining birdcages or for your kids to doodle on. The Owyhee Avalanche, Homedale.

**Italian leather couch and loveseat** Brand new still wrapped in plastic, retail \$1450 must sale \$895. 208-888-1464.

**Bedroom set 5-piece** cherry set brand new in box list \$1450 must sale \$399. 208-888-1464

**Bed-queen pillowtop mattress set,** brand new, still in plastic. List \$700, sacrifice \$165. Queen orthopedic set, brand new. Value \$499 sacrifice \$135. 208-866-7476.

**King-sized pillowtop mattress set.** New, in bag, with warranty. Value \$800 sacrifice \$235. 208-866-7476

**Registered Angus Bulls** yearlings and 2 year olds, performance tested, guaranteed. Burgess Angus 337-4094

**Nice sofa, lounge chair,** 2 occasional chairs, coffee table, 9-drawer dresser w/mirror and matching night stands - \$500 for all. Also, pool table \$500, poker video game \$250, camper shell \$35. 337-3016

**By owner** for sale building lots with a view 2.25 acres to 1.75

acre lots, with power, phone and irrigation. Call Charlie 337-5990 or 250-4937

**1<sup>st</sup>, 2<sup>nd</sup>, 3<sup>rd</sup> cutting,** In stack, 36 T oat hay, 4x3x8 Freeman bales, 500 T leafy alfalfa 4x3x8 Freeman bales, 120 T leafy alfalfa 2 string bales \$70. to \$90. per ton, cash or cashiers check. 541-339-4314

**4-H weiner pigs** and a 9-yr. old Molly mule for sale, 337-5778 or 724-4903 ask for Leroy or Barbara.

**Black Angus yearling bulls,** for print out of EPD's and Sires call Hyde Ranch Angus 208-834-2505

**1973 3 brrm 1.5 bth** newly remodeled mobile home in nice park \$5,500 OBO 337-8011

**Loved daily by children,** pure bred Lab puppies, black and golden \$75 ea. 337-5959 after 4 p.m.

SERVICES

**JJ Excavation and Hauling,** TOP SOIL, and gravel delivery, excavator and trucks for hire. Road building, dozer, water truck and road grader. Free estimate. 208-337-4822 or 573-5700.

**Dump Truck & Back hoe service,** ditch cleaning & demolition. Call Steve at 465-5196 or 371-4285.

**Fun piano lessons,** never too young; never too old. All ages and levels, home schoolers and learning disabilities. Welcome. Reasonable rates. 467-6244.

**Lose 2-8 pounds every week!** Eat the foods you love! Have more

energy! Guaranteed-Natural-Safe-Doctor recommended. Let us help you lose this weight. You will have a personal coach to help you achieve your weight loss goals. Call 1-888-218-8250

**Let me do your cleaning,** you specify I comply, also will do ironing 337-5558

**Income taxes prepared,** reasonable rates, please call 337-3795

**Best price in the valley for on-site computer** cleaning and repair. Call Tom or Colette at 208-896-4676, Technical Computer Cleaning.

**Day care** 2 to 3, full-time opening, wicap certified, all meals provided, lots of room to play, call Donna 337-6180

**Wilson Tractor Service:** road repairs, landscape grading, weed mowing, small acreage specialty, quality custom concrete, and dependable service. Call Charlie Wilson 250-4937, 337-5990

**JW Sharpening Service**  
**Small Engine Repair**  
208-337-3556  
Pickup Stations:  
Marsing: Harvey's Auto Center  
Wilder: Wilder Building Center

J.W. SHARPENING  
26531 BELLA VISTA DR.  
337-3556

John Deere  
to Wilder  
Hwy 95  
Batt Corner Road  
Homedale Snake River

**Computer Stress?**

Personalized tutoring in your home. No job too small, email, internet, word processing, accounting, scanning, software installation, photos, etc. Affordable. Call Shaun 896-4483

**THANK YOU**

I would like to send out a special thanks to the Homedale Ambulance for taking me to the hospital. I would also like to thank everyone for their kindness, food, visits and everything else. Thank you very much, Selma Gaviola

The American Legion Post 128 of Marsing would like to thank all the people who donated items to our annual stew feed held on February 11. Also to those ladies who help prepare the meal and those who attended and made our event a huge success. Kenneth and Virginia Belknap; Harvey's Auto; Townsend Auto Parts; Blue Moon Barber Shop; Main Street Supply, Mr. B's Market, Bowman's Produce; Haken Insurance; Darrell Brown; Windriver Embroidery; Roger Wheel Alignment; Robison Fruit Ranch; Amalgamated Sugar; Jump Creek Lumber; Paul's Market; Homedale Feed; Gene and Ruth Clapier; Stone Lumber; Landview Fertilizer; Pioneer Title; Mona Lindemann; Dino's Barber Shop; Sandbar Restaurant; Whitehouse Drive Inn; Donna's Oven; Marsing Family Video;

Marsing Hardware; Snake River Mart; Service Station; Pepe's Pizza; Gene and Fay Pfrimmer; Lamon Loucks; Ste Chapelle Winery; Symms Orchard; Les Schwab of Homedale, Matteson's; Campbell Tractor; River Country Auto, Jerry Roberts; Lloyd Lumber Co.; B and B Supply, Steve Ineck; Producer's Supply; Gloria Watson and family; Owyhee Avalanche; all cakes donated. We hope we didn't miss anyone. All was appreciated!

Thank you for the Fundraiser Donations. Homedale Drive Inn, one CK lunch; Eclipse Tanning, basket and tans; NAPA, 8 piece tool set; Homedale Floral; Ace Hardware; Paul's Market, hot dogs/buns/condiments; Frosty Palace, two \$10 gift cards; Christy Hair Depo, baked goods; Wilder Building, duster mop; Matteson's Country Store, 3 large pizzas; Take 2 Video, 15 rentals; Homedale Feed Co., \$20 gift card; Lisa Walker Home Interior, one picture (value \$89); Cristy Marcs, bread; Dolly Hyer, pics; Paxton, cakes; Dianna, pie; Jamie Mom, cookies/candy; Tanya, cookies/

brownies; Dawn, cookies/banana bread/bars; Carroll McMichael, bread; Chris Bahem, bars; Chad Cristenson, BBQ/propane; Danny Watson, pole holder; Les Schwab, baseball cap; Lori Latte, rolls/pie/coffee. Thanks to those who donated silently.

REAL ESTATE

**1979 Nashua 3 bdrm 1.5 bth,** partly remodeled, on rented lot, Pioneer Mobile Home Park, Homedale \$7000. OBO 337-5400  
**3 bdrm 2 bth 2 car garage,** 6 acres, irrigated pasture. Owner/agent 989-8020

**INTEREST RATES  
LOWEST IN YEARS!**

See us for..  
**Home Loans  
Home Equity Loans**

**Mike Lipinski**  
208-896-4297 • 208-442-3636

**COLDWELL BANKER**

**ASPEN**  
GEORGE WILSON  
JOHN CONTI

896-5312 • 890-4770 • 880-7829  
View Properties At: [www.idaholand4u.com](http://www.idaholand4u.com)

**GREAT SET-UP FOR THE LARGE FAMILY**  
5 Bedroom, 2 Bath. Could be 7 bedroom  
**\$104,000**

**SNAKE RIVER VIEW**  
Hill top 5 Acres. 2400 sq. ft. 4 bed/ 2 bath home. Sun Room.  
Large Great Room **\$264,000**

**OWNER WILL CARRY. BUILDING LOT**  
6 Acres. Live water. Power - Fenced - Pressurized irrigation  
**\$5K Down - \$59,000**

**6 ACRES - BRING HORSES**  
3 bedroom, 2 bath, 2 car garage. Fenced, Irrigation, Top of hill.  
**\$134,900**

**1 ACRE HORSE SET UP**  
2 car Garage & Shop, 2 bay horse barn, 3 stall horse barn & Tack Room.  
5 bedroom, 3 bath 2400 sq. ft. home. Next to BLM. **\$129,000**

**BUILDING SITES**

- 2.2 Acres, underground utilities, paved road, vinyl fence. **\$28,500**
- 6.3 Acres Overlooking Snake River Valley, underground utilities, paved road **\$51,900**
- 2.6 Acres fenced white vinyl, irrigation, utilities **\$26,500**

**DESERT HIGH**

**REAL ESTATE**  
Marsing Office - 896-4624  
[www.deserthighrealestate.com](http://www.deserthighrealestate.com)

**HOMEDALE OFFICE**  
**Lori Rasmussen**  
**337-4593**  
Licensed in Idaho and Oregon

**NEED A PLACE FOR THE "BIG BOY'S" TOYS?**  
**6953 COYOTE RUN LANE, MARSING**  
We've got it. This 3Br/2Ba 1152Sq' Hilltop home boasts the workshop of your dreams. The property is 1.83 acres with the view "To die for" and an enclosed RV Storage. It has a pond and Natural Landscape for ease. The home features California Closets and a Garden Tub for Her with a wrap around deck. It has a Sun Room and is very tastefully decorated. This is one of those places you must see to believe. Only \$144,500 Call for your private showing today!!

**BAKER AUCTION CO. EARLY SPRING  
CONSIGNMENT AUCTION**

**SATURDAY, MARCH 8, 2003**

Located: At the Homedale Beet Dump, Homedale ID. Signs Posted.  
Sale Starts 10:00 AM/MT Lunch Served.

Terms: Cash or bankable check sale day. No buyer's premium. No Credit Cards.

**TRACTORS:** JD 4020 powershift trans, low hrs • N H 1114 diesel swather 12' header  
• IHC 844 w/loader

**VEHICLES:** 1991 Dodge short box auto 2 wheel drive • 1972 GMC Bus, 43 passenger, 318 Allison diesel auto • 1977 Chevy dually P.U. 454 V-8

**TRAILERS** 1989 Brothers walking floor trailer • 1986 Peerless walking floor trailer 1978 Circle J 16' 4 horse trailer • 20' 5" wheel flatbed trailer • 22' 5" wheel flatbed trailer w/winch • 13' Aloha camp trailer

**EQUIPMENT:** 14' ground hog smyzer front, pipe rear • Hutchmaster 13.6 offset disc JD 900 7 shank ripper • Case 5 bottom on land plow • 4 bar 3pt cult w/tools • 2 bar 3pt bar w/rolling colters • set of Ace 100 SS saddle tanks w/brackets • 2- sets of Ace 150 gal saddle tanks w/hyd pumps • 5 row disc corrugator • 5 row bar w/injector shanks & Eversman steel gauge wheels • IH 4 bottom plow • JD 3 bottom plow • N H 1032 stacker • hay rake • JD 11' disc • 4- sets of harrows • N H manure spreader • set of Ace 3pt 60' spray booms • 3pt 9 row corrugator w/markers & gauge wheels • 15' tire roller w/gooseneck hitch • 2- Gl air plane tugs 4X4 w/crab steering 360 Chrysler engines • fuel tanks, water tanks, livestock equipment • 3- cultivator bars w/spacers • 2- 12' Eversman landplanes • 3pt 6' blades • grain drill • Hobson 3 row straw mulcher • Brittonia 36 row band sprayer • 3pt ditcher • JD 4 bottom switch plow • set of 90' hyd fold spray booms w/elect valve 75- 16' & 20' poles • 150- 10, 12, 16' 1/2 poles • 50- 8' split poles • 150- 4' fence stays

**IRRIGATION** 7 1/2 hp single phase Berkley Irr. Pump, 500 GPM w/panel • misc handlines

This is just a partial listing. To consign your equipment please contact JB Salutregui @ 541/212-3278 or any of the Baker Auction Co. Personnel listed below.

**BAKER AUCTION CO.**  
**1-800-650-5808**

<b>ROGER BAKER</b> 541-889-5808	<b>Col. ELLIS ALBRIGHT</b> 208-466-0169	
<b>BOB HOGG</b> 208-549-1980	<b>J.B. SALUTREGUI</b> 541-212-3278	<b>SAM BAKER</b> 541-889-8413

Visit our website at: [www.bakerauction.com](http://www.bakerauction.com) for colored pictures & full listing of this and upcoming auctions.





# Snake River Mart

MARSING, IDAHO

HOURS: Mon. - Sat. 6:00 a.m. to 10:00 p.m. - Sunday 7:00 a.m. to 9:00 p.m.

Fresh Frozen  
**Boneless Skinless  
Chicken Breasts**



**\$1.59**  
lb.

Bone-In  
**Cooks Hams**



Shank... **59¢** lb.  
Butt..... **79¢** lb.

Red Delicious  
**Apples**



**69¢**  
lb.

Small Choice  
**Oranges**



**10 for \$1**

**Beef Cube Steaks**



**\$2.59**  
lb.

Fresh Frozen  
**Chicken Drums or  
Thighs**



**59¢** lb.  
Tray Pack

Fresh Head  
**Cabbage**



**39¢**  
lb.

Fresh Stalk  
**Celery**



**2 for \$1**

5 oz. Asst'd. Western Family  
**Burritos** **5 for \$1**  
1 oz. Western Family  
**String Cheese** **6 for \$1**  
Beef Boneless  
**London Broil** **\$2.99** lb.

8 oz. Asst'd. Western Family  
**Shredded Cheese** **\$1.00**  
11.7 oz. Oscar Mayer  
**Lunchables** **3 for \$5**  
Asst'd.  
**Tony's Pizzas** **2 for \$4**

US #1  
**Red Potatoes** **49¢** lb.  
Green  
**Onions** **3 for \$1**  
Hass Large  
**Avocadoes** **99¢** ea.

2 lb. Bag  
**Carrots** **79¢**  
Cello Head  
**Lettuce** **59¢** ea.  
Jumbo  
**Yellow Onions** **5 lbs. for \$1**

Shedd's Spread  
**Country Crock  
Margarine**



**99¢**  
16 oz.

10.75 to 16 oz. Asst'd.  
**Western Family Cookies** **2 for \$3**

Western Family  
**Spaghetti or  
Elbow Macaroni**



**2 for \$1**  
22 oz. Package

Betty Crocker  
**Hamburger Helper Dinners** **2 for \$4**

Western Family  
**Cake Mixes**



**69¢**  
18.25 oz. Asst'd.

16 oz. Western Family  
**RTS Frostings** **\$1.29**

All Varieties  
**Coke Products**



**2 for \$5**  
6-1/2 Liter Bottles

11.5 oz. Lays  
**Potato Chips** **2 for \$4**

**Maruchan  
Ramen Noodles**



**9 for \$1**  
3 oz. Asst'd.

32 oz. Western Family  
**Graham Crackers** **2 for \$4**

**Shasta Pop**



**99¢**  
6-12 oz. Cans

100 ct.  
**Lipton Tea Bags** **2 for \$5**

Sun Ultra  
**Laundry  
Detergent**



**2 for \$5**  
56 oz. Box

12 oz. Lysol  
**Disinfectant Spray** **2 for \$7**

Western Family  
**Chunk Style  
Dog Food**



**\$7.99**  
37.5 lb.

32 oz.  
**409 Cleaner** **2 for \$5**

ONE COUPON PER VISIT - PER ITEM ONLY. THANK YOU!!

5001 **COUPON**

Western Family  
**Fire Logs**

**99¢**

5 lb.

Limit 2 Expires 02/25/03

5002 **COUPON**

**Coors Beer**

**\$6.89**

12-12 oz. Bottles

Limit 2 Expires 02/25/03

5003 **COUPON**

Western Family  
**White or Wheat  
Bread**

**2 for \$1**

16 oz.

Limit 2 Expires 02/25/03

5004 **COUPON**

Falconhurst  
**2% Milk**

**2 for \$3**

1 Gallon

Limit 2 Expires 02/25/03

WE RESERVE THE RIGHT TO LIMIT QUANTITIES AND CORRECT PRINTED ERRORS • PRICES EFFECTIVE 02/19/03 thru 02/25/03



# Public notices









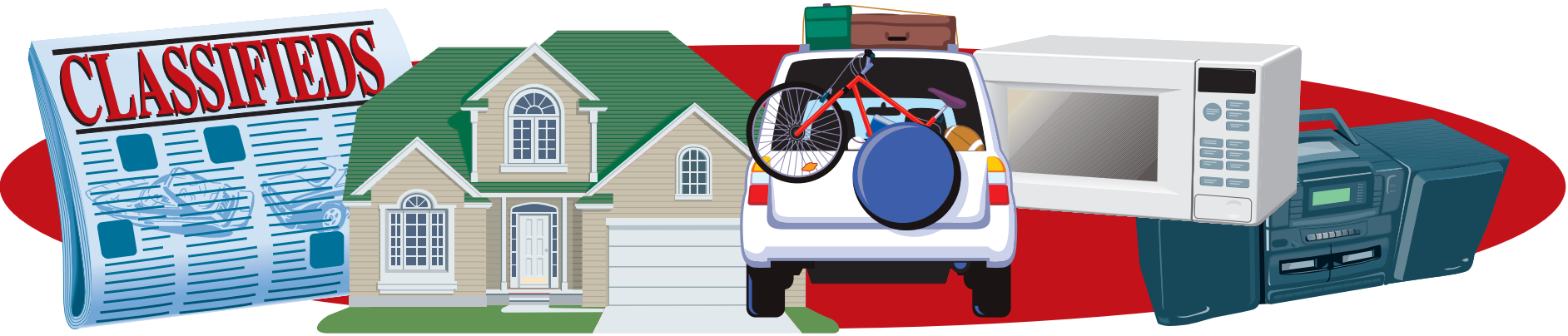


# Public notices



# Public notices





***The Owyhee Avalanche***  
*Owyhee County's best source for local news!!*



