

This  
Friday!

WEDNESDAY, FEBRUARY 12, 2003

Established 1865

# The Owyhee Avalanche

VOLUME 19, NUMBER 7

HOMEDALE, OWYHEE COUNTY, IDAHO

SEVENTY-FIVE CENTS



**Homedale and  
Marsing win  
tournament openers**  
page 11

**Homedale resident target  
of Nigerian scam**  
page 7

**A shot at high-tech  
training**  
page 2



## Cattlemen gather for winter convention

The Owyhee County Cattlemen's Association gathered at the community hall in Oreana last Saturday for the annual winter convention.

Dignitaries from the Bureau of Land Management, Senator Mike Crapo's office, Senator Larry Craig's office and legislative representatives as well as local cattlemen, ranchers and farmers attended last weekend's meeting which was officiated over by Cattlemen's president Charlie Lyons.

Lyons began the meeting by awarding a silver snaffle bit to Darron Fredricks. K Lynn Bennett, State Director of the BLM was then introduced and spoke to the group about his continued desire to work with the ranchers concerning grazing issues and to keep sage grouse off the endangered species list.

Bennett told the cattlemen that if sage grouse were to be listed, it could be devastating to the local ranchers. He said he would continue to work with the local working groups to submit studies of solutions for — to page 4



Owyhee County Cattlemen President Charlie Lyon holds his young son, Henry, during last weekend's annual winter convention in Oreana.



### Evening beauty

The sun sets over the valley last week making a beautiful array of colors. Cold nighttime temperatures are expected to continue throughout this week with no sign of precipitation in the upcoming forecast.

## Poison Creek Road access disputed at public hearing

The access of a roadway was debated during a public hearing with the Owyhee County Commissioners last week after the new owner of the property installed gates to keep motorists from passing near his home. Owners of the property, Mark and Jan Anglin maintain the only reason they gated the road is due to continued vandalism. But they say they have also added an alternate route for people traveling to the Sands Basin area.

The Anglin's attorney, Richard Eismann, made an opening statement to the commissioners by saying the Anglins did their homework in their effort to maintain right of way to their property. He said the Anglins obtained a building permit from the county planning and zoning commission, which required

them to provide an access to their home.

"Essentially we want to set one thing correct," Eismann stated to the board. "There is no evidence on the part of Mr. and Mrs. Anglin to cut off access south of their property."

"They have purchased 40 acres. The 40 acres required some access. The information they received showed that there was no access so they proceeded to get the right-of-way."

"They concurred with the realtor who was handling that transaction to determine what the nature of the road was. There simply was no indication to them that this kind of problem existed. After they were well into their construction, a problem did arise. They then closed off a portion of what we will refer to as the old road. They do now

offer a deeded right-of-way to whatever agency that is appropriate so access is provided to what we are referring to as an alternate road. They have improved it and have left it open for transit.

"Having no indication that this road was any kind of problem, they proceeded to build a significant home, garage structure, one on one side and one on the other side of the old road. The result is they also expended, at the request of the Owyhee County Planning and Zoning Commission, some \$12,000 in improving the old road so fire trucks could get to their residence. What they have found are that you folks gathered here today have the attitude that everybody needs to look after what is back there. Guard it. Take care of it. But — to page 4

## Smorgasbord feeds nearly 2,500 people

223 enter annual  
art show

Nearly 2,500 people attended last weekend's annual International Smorgasbord in Homedale, slightly less than last year's attendance.

Students from Homedale Middle School sold over \$5,000 in tickets and several thousand more dollars in tickets were collected at the door. Coordinators for the event said the final amount collected had not been totaled as of press time.

Greg Truesdell from Mrs. Warren's class sold the highest amount collecting \$421.50 for the event. Ryan Garrett from Mr. Hann's class sold \$418.50 in tickets and Grant Sweet from Mrs. Eidemiller's class sold \$411 in tickets. The three were honored as overall top ticket sales winners.

Mrs. Warren's class will be treated to a pizza party for being the top sales class selling nearly



Dan Landa volunteers to cut polish sausage during last weekend's annual International Smorgasbord held at Homedale Elementary School.



# Local law enforcement takes shot at high-tech training

The Owyhee County Sheriff's Department, Homedale Police Department and the Elmore County Sheriff's Offices' new Laser Shot System looks more like a giant video game than a firearms training device.

But the large screen, projector, infrared reader, computer and artificial guns will help officers better prepare for life or death situations, said Owyhee County Chief Deputy Sheriff Dick Freund. "Small agencies who can't afford a large range or a Hogans' Alley can use this and it gives you more realistic scenario. It creates the stress in the officer to determine how the officer will react in a real stress situation. It helps the officer to see how he will react under stress as well."

Freund said Sheriff Gary Aman decided, with the assistance of Homedale and Elmore County Law Enforcement, and the Owyhee County Sheriff's Posse, to buy the new Laser Shot System after seeing one at a sheriffs association meeting a few of months ago.

Officers train with the laser system using an artificial handgun or rifle. They can also insert an infrared clip into their own guns and practice.

The Laser Shot System consists of a wall-sized screen on which scenes are projected from a computer. The scenes vary from hostage situations to burglaries to backing up fellow officers to officers injured during the commission of a crime. Hunter Education simulations are also included in the Officers shoot at the screen and laser points are

recorded so officers can see how they did.

Firearms instructors can stop the scenes and discuss the plans of action with officers.

Laser Shot includes a variety of firearms including pistols, rifles, in the barrel inserts and the LS-5000 AR-15, a pneumatic recoil rifle.

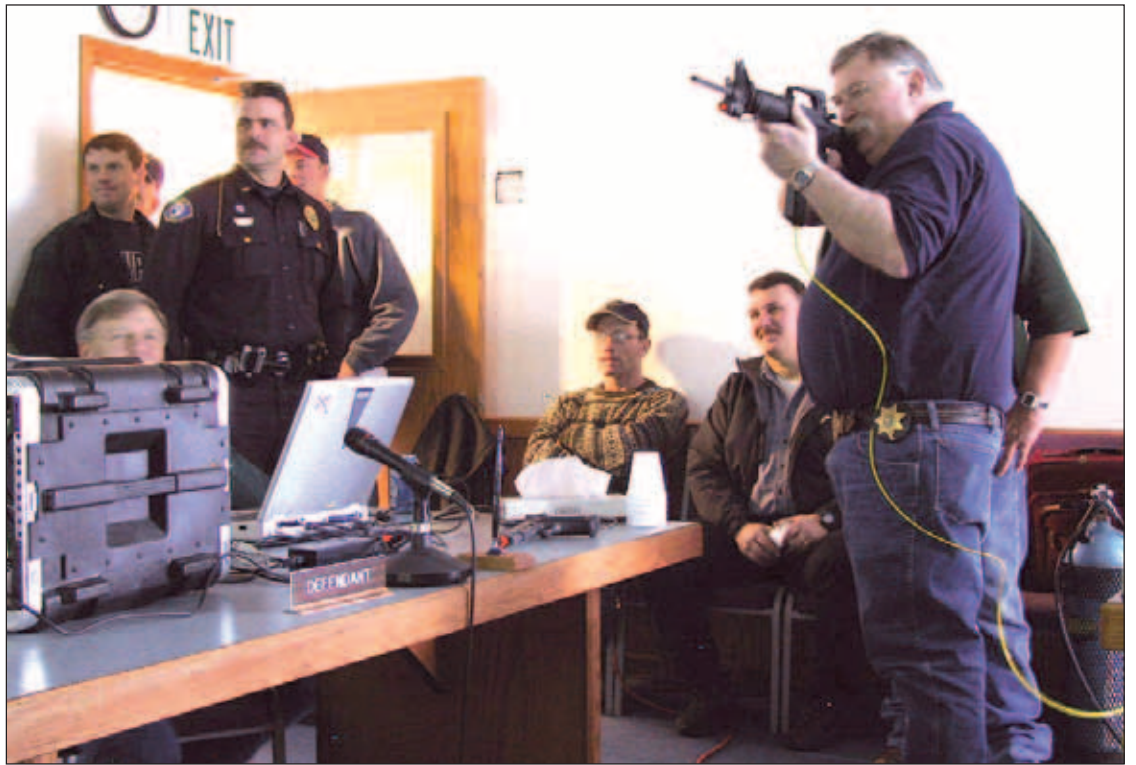
A bright red dot from the laser indicates the impact position of the bullet. The trainer and /or the shooter can quickly see the results of proper trigger manipulation and sight alignment.

Freund said the system would be kept with whichever department is using it. He said now the law enforcement offices will have the ability to teach the public in gun safety classes for kids or adults, they can use it for citizens on patrol classes and for the posse members.

"We will use it as a training tool for everyone," Freund explained. "The deputies, jailers, posse members and the dispatchers can even use it if they choose to. For all the department personnel and the posse."

Currently the county has a small arms range, shotgun range and rifle range. They practice on paper targets and steel knock down targets. Freund said the department could not practice many real life situations because they do not have the funding for the equipment needed. He said the officers would be able to use their own firearms to practice on because of the barrel inserts provided with the system.

"Speed in one thing, accuracy is another," Freund. - CPB



## Take your best shot

Owyhee County Chief Deputy Dick Freund tries out a simulated AR15 controlled by oxygen during a training session of a new high tech laser system recently purchased by several local law enforcement agencies.

## OCHS field trip, meeting announced

### Historical Society holds open house for leaving director

The OCHS field trip committee will hold a trailer-planning meeting on Feb. 15 at 11:30 a.m. at the Sandbar Restaurant in Marsing. On Feb. 13<sup>th</sup> from 2 until 7 p.m., the society will hold an open house to say "farewell" to museum director Kristen Mercer and to welcome the new director Thomas Couch. Refreshments will be served.

Spokesman said attendance is especially important for the trailer-planning meeting, if

people would like to help design the restroom trailer to be built to pull on field trips. All design ideas will be welcome.

"The field trip committee knows that we are doing something important," the spokesman said. "Already we have been given an axle, wheels, tires and enough steel to build the chassis. We have been offered a low-water flush, RV-type stool if it is desired for the final design. Homedale High School's drafting class will draw up plans once we get our concepts together. It is exciting to have so much

enthusiasm already demonstrated."

Last year, the society rented mobile toilets for field trips. They had approximately 75 people per trip. Prior to the rental, the society had 35-50 people attending.

"Please attend our design meeting if you would like to see particular features included," the spokesman continued. "We thank those who have already donated materials for this project. Any cash donations would also be well used."

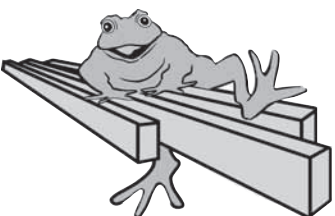
To reserve a space, contact Jim Hyslop at 466-5064.

# INVENTORY REDUCTION SALE!!!

## 30% OFF ALL HARDWARE!

## 25% OFF ALL POWER TOOLS!

**While Supplies Last!**



## Jump Creek Lumber

**337-5588** East Pioneer Road, Homedale, Idaho

**Hours: Monday-Friday 8 a.m. to 5:00 p.m. • SATURDAY 8:00 a.m. to 1:00 p.m.**

## Marsing's Old West Dollar Store And More

*Proudly Presents the*  
**GRAND OPENING**  
*of our New Location!*

**Saturday February 15  
6 Main Street, Marsing  
(in the old Tin Husky)**

**We'll have a Raffle!  
Lots of New Merchandise!  
Come check us out!**



# 4-H enrollment deadline nears

The deadline to enroll in a 4-H group for 2003 is quickly sneaking up and local coordinators said last week that children wishing to enroll will need to do it soon.

March 1<sup>st</sup> is the deadline to enroll in 4-H groups in Owyhee County, which includes approximately 20 groups. Everything from arts and crafts, cooking, computers and the regular livestock clubs are offered. But University of Idaho Owyhee County Extension 4-H Program Coordinator Tara Rowland said 4-H offers much more than livestock which is usually connected to 4-H.

“Livestock projects have always been, and will continue to be, a large part of the 4-H program,” Rowland explained. “However, there are many other facets of this diverse organization that are unknown to many people.

“There is something for everyone in 4-H, whether it be cooking, sewing, computers, aerospace, entomology, electricity, bicycles, wood working, or any other activity one may be interested in.

“4-H also includes many leadership development events, like camps, trainings and conferences; there are many opportunities to participate in short term 4-H activity.”

4-H is a “learn by doing” youth education program for boys and girls in kindergarten through 12<sup>th</sup> grade. For youth ages 5-7 (4-H Cloverbuds), the program is designed to meet the developmental characteristics of young children.

It emphasizes cooperative learning and excludes competitive events. Youth ages 8-19 usually belong to 4-H clubs or groups and select projects or activities from the large number available to them, and may choose to enter fairs or other competition.

Rowland said 4-H is for kids who want to participate in a stimulating atmosphere to develop life skills, and volunteers are always needed to help children learn and grow through their projects.

“4-H is also a wonderful opportunity for families to have fun and grow together,” Rowland continued. “It helps kids to be the best that they can be. They learn to accept responsibility and develop self-confidence while having fun.

I think the important thing to stress is that a family does not have to have 20 acres to take a 4-H project. There are a lot of projects available besides, beef, sheep, and swine. Basically, if a child is interested in something they can take it as a project - if we don’t have the particular project they’re looking for, they can take it as a self-determined project where they set their own goals.”

4-H is the largest and oldest youth organization in the world. The focus is to help today’s youth develop life skills through fun experiential, hands on learning. It works to develop communication, social and leadership skills, responsibility and confidence.

Currently 152 members and leaders have signed up for the 2003 4-H program. Last year 444 members were signed up and 57 leaders.

## Sandoval graduates training course

Army Reserve Pvt. Horacio Sandoval has graduated from the heavy-wheeled vehicle mechanic advanced individual training course at Fort Jackson, Columbia, S.C. Sandoval is the son of Maria Y. Sandoval of Marsing and graduated from Marsing High School in 2002.

During the course, the soldier learned to perform unit maintenance on heavy duty vehicles, including prime movers designated as more than five tons and associated trailers, such as crane, hoist and winch assemblies and material handling equipment.



Happy Valentine's Day

# Owyhee Lanes & Restaurant

Sweetheart Special Dinner

Steak & Lobster Tail

\$14.95 per person

February 14 only - 5:00 pm 'till Gone

337-3757 • 18 W. 1st St. • Homedale, Idaho



## Lions honored

*Homedale Lions President Larry Bahem holds a plaque awarded to the local club in honor of their support for the Idaho/Oregon Lions Sight and Hearing Foundation. Bahem attended the annual Lions International Mid-Winter Convention in Twin Falls earlier this month to receive the award. Homedale Lions assist families on fixed income with optical needs.*

## Spaghetti and bingo night to be held in Oreana

A fundraiser to benefit remodeling and upgrades to the Oreana Community Hall will be held on Saturday with a spaghetti dinner and bingo night.

Dinner will be served at 6:30 p.m. and will cost \$5 per person or \$20 per family. Spaghetti, salad, bread, dessert and a drink will be offered. All proceeds of the benefit will go to help the remodeling effort of the Oreana Community Hall.

## Republican Women to meet

The Owyhee County Republican Women will be meeting at 6:30 p.m., Wednesday Feb. 19<sup>th</sup> at the Owyhee County Courthouse in Murphy.

Tom Tingey with SET Financial will discuss estate planning, long-term care and the economy.

All men and women are invited to attend. For more information contact Joan Mason at 337-3611.

### River's Edge Nursery, LLC

Pre-Season Special!

- Instant Shade
- Great Windbreak

Limited quantity of extra large and tall Theves Poplars

15' tall, 4-6" diameter - \$32.00  
12' tall, 2-4" diameter - \$25.00

Planting service also available.

OFFER GOOD THROUGH MARCH 2<sup>nd</sup>.

Come see us at  
18039 Fish Road  
Wilder, Idaho

(1/4 mile So. of River Bend Golf Course)  
Open Saturdays & Sundays 8-5

# Fundraiser planned for injured officer

A baked food sale, silent auction and quilt raffle fundraiser will be held Saturday at the Reel Time Video in Homedale to help raise money for an officer injured recently.

Homedale Police Officer Jamie Austin received injuries to his face and eyes when a tractor battery blew up while he was attempting to charge it. Austin has been on a medical leave of absence from the local law enforcement agency since his injuries occurred last month.

Tanya Krueger, owner of Reel Time Video said she chose to hold the event to help raise money for Austin’s mounting medical bills. The officer is also expecting his third child this month.

## Bible services to be held

Special nondenominational Bible services will be held in the Vance Dairy Construction office building, each Friday at 7:30 pm, 201 W. Idaho Ave. in Homedale. Services begin Friday, Feb. 21<sup>st</sup>, and will continue through March.



These services are for the purpose of bringing faith to those who don’t have faith and strengthening the faith of those who do. Services are one hour in duration and present the faith and fellowship that is in the New Testament. No appeals for money are made. Speakers are Stan Sullivan and Troy Peterson.



## Are you my mother?

*A yearling deer knows where it is safe to spend the winter, in the middle of several motherly cows with plenty of hay, grain and protection. This deer was seen outside of Marsing lounging in the morning sun with her larger friends.*

## THIS WEEK'S SPECIALS!

 <p><b>'96 Chevrolet Cavalier</b> Great on Gas, Low Miles <b>\$1375 Down O.A.C.</b></p>	 <p><b>'95 Chevrolet Pickup</b> V-6 ATM - Clean <b>\$60/Week O.A.C.</b></p>
 <p><b>'93 Ford Explorer</b> Nice Family SUV <b>\$1400 Down O.A.C.</b></p>	 <p><b>'95 Ford Taurus</b> <b>\$900 Down O.A.C.</b></p>



### HEARTLAND CAR COMPANY

17211 Highway 95 • Homedale  
337-5040  
*Se Habla Español*



From page 1



Bureau of Land Management  
State Director K Lynn Bennett.

✓ Cattlemen

declining grouse numbers.

“I know a number of you supported my appointment to BLM and I thank you for that,” Bennett said. “I didn’t come here to make a speech, but for those of you who don’t know me, I wanted to come to let you know who I am. During the time I am here in this position, I want to let everyone here know, that my goal is to make a difference. I want to make a difference. I know that there are some problems with BLM and Owyhee County. I want to change that if I can. I want to quiet the waters and improve our relationships with those who work and play on public lands here in Owyhee County.”

The Jordan Valley Rodeo Board gave an update concerning its efforts to help raise money for the cattlemen’s

continuing legal costs. The rodeo board holds several rodeo events per year to collect funds for the cattlemen. Connie Brandau was also honored for

her continued assistance with the board.

The cattlemen will hold its annual summer convention in Silver City in July. -CPB



**Snaffle bit winner**

*Darron Fredricks and OCCA president Charlie Lyons hold a silver snaffle bit which Fredricks won during last weekend’s annual winter meeting.*



*Jerry Rayburn from the Jordan Valley Rodeo Board honors Connie Brandau for her help in the Jordan Valley Rodeo’s fall rodeo event.*

“Cat” and Cory Uria won the people’s choice award for a pencil drawing of “Horses.”

Sonja Sperber won grand champion in the high school division with “Van Gogh Study.”

Vanessa Lootens received the people’s choice award for her entry of “The Old and the New.”

In the adult division, Margie Isaguirre’s oil painting of “Cody Echevarria 1<sup>st</sup> place Omak Stampede” won a grand champion ribbon. Vicki Lyon’s acrylic, “Elk on Feather,” won the people’s choice award.

The complete final results of the art show will be published in next week’s Owyhee Avalanche. -CPB

✓ Hearing

unfortunately some citizens who have access and use it don’t have the same attitude and there has been vandalism. Their efforts by providing the alternate route is to protect their investment and still provide access south of their home.”

Lois Hart represented the Director of the Natural Resources Committee for

Owyhee County and stated that their position is to “show that the facts shown today will prove that Poison Creek road is a public road, has always been a public road, and that the contested portion has always been maintained by the county, public funds have been expended, and that the RS2477 right of way has never been abandoned.”

“The big issues legally in this case is going to be the 1948 commissioners’ order whereby they created a resolution to abandon roads in the county,” Hart explained. “Our position is, that resolution did not meet the technical requirements of the statutes and there has never been any formal abandonment by the county, therefore this remains a public road. We can’t have a precedent started in the county where private landowners gate off a road. They need to be coming to the commissioners first.

Testimony continued throughout the day with many witnesses from both sides. The hearing officer, Fred Grant said that the commissioners would not make a determination on the hearing until all the facts and findings have been submitted. -CPB

Senior news

Homedale Senior Center

- Feb. 13: Valentine dinner-Baked ham, scallop potatoes, veggies, salad, roll, ice cream.
- Feb. 14: Bacon, eggs, hashbrowns, pancakes, juice, toast.
- Feb. 15: Sweetheart Dance 7-10 p.m. Music by: “Yesterdays Country”
- Feb. 17: Closed Presidents Day!
- Feb. 18: Ham and beans, corn bread, cottage cheese w/fruit, bingo, shopping bus to: Homedale 1:30.
- Feb. 19: Wilder PotLuck, noon. Sign language class 1:00.

The Owyhee Avalanche

P.O. BOX 97 • HOMEDALE, ID 83628

PHONE 208 / 337-4681 • FAX 208 / 337-4867

E-mail [avalanche@citlink.net](mailto:avalanche@citlink.net)

NATIONAL NEWSBINDER ASSOCIATION

Member

U.S.P.S. NO. 416-340

Copyright 2003—ISSN #8750-6823

JOE E. AMAN, *editor-in-chief and publisher*

CHERYL PETERSON BEESON, *reporter*

JENNIFER STUTHEIT, *office*

ROBERT AMAN, *composition*

Published each week in Homedale, Idaho by Owyhee Avalanche, Inc. Entered as Periodical, paid at the Post Office at Homedale, ID under the Act of March 3, 1879. POSTMASTER: send address changes to THE OWYHEE AVALANCHE, P.O. 97, Homedale, ID 83628.

Annual Subscription Rates:

Owyhee County..... \$31.50

Canyon, Ada, Malheur counties ..... 36.75

Elsewhere..... 40.00

(Includes sales tax where applicable)

Deadlines

Classifieds

Monday noon the week of publication

Legal notices

Friday noon the week prior to publication

Display advertising

Friday noon the week prior to publication

Inserts

Friday noon the week prior to publication

✓ Sm’gasbord

\$3,000 in meal tickets.

Forty-nine students sold over \$26 in tickets and will be able to attend a bowling party in their honor. Last year, students raised \$5,750 in ticket sales, this year the numbers were slightly lower with the student selling \$5,320.50 in tickets.

There were 223 entries in the art show this year, with 21 entries from elementary, 25 entries from the middle school and 154 from the high school. Twenty-three entries were presented in the adult division.

Gabby Nash won a grand champion ribbon for her entry in the elementary division of “Raggedy Ann.” Marissa Ensley won the people’s choice award for her photography, “My Buddy Bo.”

In the middle school division, Josh Myers won a grand champion ribbon with

More photos page 12

Snow - precipitation update											
based on mountain data from NRCS SNOTEL sites											
as of Tuesday: January 7, 2003											
Basin Data site name	elev. (ft)	Snow water equivalent		total precipitation							
		Current	avg	percent	current	avg					
Bruneau Basin											
Bear Creek	7800	9.1	8.9	102	9.2	11.0					
Big Bend	6700	4.5	4.5	100	4.4	5.9					
Pole Creek R.S.	8330	6.6	9.7	68	4.8	5.8					
Seventysix Creek	7100	4.6	5.4	85	6.3	7.7					
Wilson Creek	7120	4.8	6.5	74	5.2	9.0					
Basin wide percent of average		85		76							
Owyhee Basin											
Big Bend	6700	4.5	4.5	100	4.4	5.9					
Fawn Creek	7000	7.2	8.2	88	8.5	11.5					
Jack Creek Upper	7250	7.2	8.4	86	8.1	10.2					
Laurel Draw	6700	5.7	5.4	106	6.5	9.3					
Mud Flat	5730	3.1	3.6	86	4.9	6.2					
South Mtn.	6500	6.9	8.7	79	8.0	11.6					
Taylor Canyon	6200	1.8	2.4	75	3.3	4.1					
Basin wide percent of average		88		74							
Based on mountain data from NRCS SNOTEL sites											
As of Tuesday: January 7, 2002											
Bruneau Basin											
Bear Creek	7800	11.9	8.9	134	13.1	10.9					
Big Bend	6700	7.9	4.5	176	6.5	5.8					
Pole Creek R.S.	8330	12.7	9.7	131	6.8	5.7					
Seventysix Creek	7100	10.0	5.4	185	9.5	7.6					
Wilson Creek	7120	8.6	6.5	132	8.8	8.9					
Basin wide percent of average		146		115							
Owyhee Basin											
Big Bend	6700	7.9	4.5	176	6.5	5.8					
Fawn Creek	7000	9.3	8.2	113	12.6	11.4					
Jack Creek Upper	7250	10.4	8.4	124	11.6	10.1					
Laurel Draw	6700	7.2	5.4	133	11.5	9.2					
Mud Flat	5730	6.2	3.6	172	8.4	6.1					
South Mtn.	6500	12.9	8.7	148	13.1	11.4					
Taylor Canyon	6200	5.6	2.4	233	4.9	4.1					
Basin wide percent of average		144		118							



# Western grouse denied endangered species listing

The U.S. Fish and Wildlife Service Friday found that a petition to list the western subspecies of sage grouse (also known as western sage grouse) as endangered or threatened does not provide sufficient information showing that the species is distinct from other sage grouse populations.

Based on that finding the Service concluded in a 90-day finding that the grouse is not eligible for federal protection under the Endangered Species Act (ESA) as stated in a statement released from the USFWS.

The Institute for Wildlife Protection petitioned the agency to list western sage grouse wherever they are found in northern California, Oregon and Washington, as well as any that still occur in parts of Idaho. The 90-day finding appears in last week's Federal Registry part of a settlement agreement that the Service complete the finding by January 30, 2003.

The Service published a 12-month finding in May 2001 for the Columbia Basin distinct population segment (DPS) of sage grouse acknowledging that listing that population was warranted. Nevertheless, listing was precluded due to higher priority listing actions.

Petitioners in today's finding requested ESA protection for the western sage grouse, claiming that there are genetic and ecological differences between sage grouse located in the Columbia Basin and the rest of the population in central and southern Oregon and Washington. Because the Service's 2001 finding presented an in-depth review of the western sage grouse, we focused only on the remaining portion of the petitioned sage grouse populations in today's review.

"Neither the petition nor any of the available scientific or commercial information demonstrated that this is a species we can list," said Anne Badgley, Regional Director of the Service's Pacific Region. "We will continue to work with federal and state agencies as well as private entities in conserving of sage grouse and encourage the continuation of activities already in place."

Under the Endangered Species Act, a species, a subspecies, or a distinct population segment may be listed as threatened or endangered. In order to qualify a distinct population segment for listing, Service policy requires looking at factors such

as isolation and significance to the rest of the species.

Currently, sage grouse can be found in 11 states and two Canadian provinces. Western sage grouse were first described in 1946, but the validity of separating eastern and western subspecies has

since been questioned. A genetics study conducted recently on the two subspecies indicates that there is no difference between them. Results of that study will be published soon.

The largest of the native grouse, sage grouse are

chicken-like, ground-nesting birds. Adult males can stand 30 inches tall and weigh up to seven pounds. They also have commonly been called sage fowl, spine-tailed grouse, fool hen, cock-of-the-plains, and sage chicken. Sage grouse depend on sagebrush most of

the year for roosting cover and food, relying on it almost entirely for food in the winter. During the spring breeding season, the males defend territory and perform elaborate displays with specialized plumage and vocalizations to attract females.



# GREAT RATES. GREAT PEOPLE.

Connie Tolmie, Wilder Branch

COME GET ACQUAINTED WITH GREAT RATES ON:

- ULTIMATE CD
- MONEY MARKET ACCOUNTS
- GOLD INTEREST CHECKING
- HOME REFINANCE LOANS
- HOME EQUITY LOANS

At Zions Bank, we've got a lot more than exceptional rates—we've got exceptional people.

That's why we give our bankers local decision-making authority. It's the best way to ensure that the people who make the decisions are the ones who know you best.

So, if you haven't stopped by our branch yet, please do. We've got a full range of banking products and services, from loans to business banking. And, as always, we'd love to show you why we haven't forgotten who keeps us in business.\*

ZIONS BANK®  
WE HAVEN'T FORGOTTEN  
WHO KEEPS US IN BUSINESS.®

315 A Avenue • 482-6218

Member FDIC 

For FAST results...  
try the  
*Classifieds!*

# Obituary

## Merle Lee Malmberg

Merle Lee Malmberg passed away at home on February 3, 2003, of Ovarian Cancer. At Merle’s request, no services will be held. The family will hold a private inurnment service at a later date after cremation.

Merle was born on May 19, 1946, to Henry and Betty (Backer) Brandau of Melba. She graduated from Melba High School in 1964 as salutatorian. Merle graduated Magna Cum Laude from the University of Idaho with a Bachelors Degree in Physical Education and Biology. A



year later she completed a Masters Degree in Education. While attending the University, she served as President of I Club and played on the University Field Hockey Team. Merle married Bruce

Malmberg on March 30, 1967, and they began ranching and farming near Marsing in 1969 after they both graduated from UI. Merle taught Biology and P.E. at Marsing high School and coached all girls’ athletics until

she started her own family. In recent years, merle enjoyed working part-time in the library at Homedale Elementary School. She enjoyed her association with many friends at the River City Racquet Club. During her long illness she received support from many friends, especially Nancy Zattiero, Kathy Cammack and Sus Helpenstell.

She is survived by her husband, Bruce; two sons, Joe Malmberg and wife Yayoi of Nagoya, Japan, and Barry Malmberg of Moscow Idaho; granddaughter Kate Otake-Malmberg; parents Henry and Betty Brandau of Melba; sister Becky Stewart and husband Don of Casper, Wyoming; a brother, several nieces, nephews, aunts, and cousins.

The family suggests that memorial contributions be made to the Marsing Ambulance Fund, PO Box 132, Marsing, ID 83639 or a favorite charity.

## FROM THE OLD

# Photo album



### Who are these ladies?

We came across this photo recently, but have no identification. Can you help us?

call  
337-4681.



Linda Bruno Johnson

## Owyhee County pioneer celebrates 93<sup>rd</sup> birthday

Owyhee County pioneer and part time resident, Linda Bruno Johnson celebrated her 93<sup>rd</sup> birthday at the home of her daughter and son-in-law Ray and Mary Jo Bell in Nampa.

Linda was born in Boise in 1910 and when she was 40 days old, her parents, Eugne and Isabela Bruno took her home to their ranch in Owyhee County known as “Moss Flats.” She attended grade school at Cow Creek.

Nearly 30 family members and friends attended her party Sunday including her daughter from Walla Walla Washington, Dale and Verna Lee Peck. Two foster daughters, Hal and Cheri Meachum of Central Cove and Lonnie and Diane Johnson and family from Nampa.

Linda’s granddaughters Camille Tidden, Julie Boren, Crystal Nelson, Linda Linsenbeliger, Paula Tesch and their husbands and children also attended.

## Grand View Lions to hold annual auction

The Grand View Lions Club will hold its annual auction on Feb. 15 at the Grand View Elementary School gymnasium.

The Lions Club will serve lunch with the auction to following at 1 p.m. The Baker Auctioneers will call out bids on many donated items including livestock, hay and straw, furniture, household products, petroleum products, cakes and pies and miscellaneous articles.

Proceeds from the event will be used for community betterment. Prizes will be awarded including a 12-gauge shotgun and a barbecue grill.

## VFW chili feed to be held Saturday

The Veterans of Foreign Wars will hold a Chili Feed fundraiser on Saturday from 5-8 p.m. at the Veterans of Foreign Wars hall in Wilder located next to the Polar Bear.

Veterans will serve “certified” homemade chili, crackers, drinks and a dessert for \$3.50 per bowl. Proceeds from the event will go to assist veterans from the Greenleaf, Parma, Homedale, Wilder and Marsing area.

For more information contact Larry at 880-1684 or 482-7365.

## IRS address changes given for Idaho taxpayers

As Idaho taxpayers begin to prepare their tax returns, the Internal Revenue Service would like to remind them that they will be sending their returns to a different service center than last year.†However, those who received a tax instruction booklet from the IRS in the mail and use the labels included with the booklet can be assured that their tax returns will go to the correct address.

Taxpayers who did not receive an instruction booklet in the mail, are mailing a paper tax return and live in one of the following 16 states should be aware of the change.†

Taxpayers in Arizona, Idaho, Indiana, Kentucky, Louisiana, Maine, Mississippi, Nebraska, New Hampshire, New†Jersey, North Dakota, Ohio, Oklahoma, South Dakota, Vermont and Washington will file their tax returns with different Internal Revenue Service Centers during 2003 than they did during 2002.

For taxpayers in Arizona, Idaho and Washington, the address is Internal Revenue Service Center, Fresno, CA 93888, and

Taxpayers enclosing a check should add “-0102” to the zip code listed above if sending a Form 1040, “-0115” for Form 1040A, or “-0114” for Form 1040EZ. Those not enclosing a check should add “-0002” if sending a Form 1040, “-0015” for Form 1040A, or “-0014” for Form 1040EZ.

The IRS continues to redistribute workload among the eight centers that process individual tax returns. Taxpayers who e-file will not be affected by these changes.

## Lizard Butte Library holds second group meet

The “Lets Talk About it” group at the Lizard Butte Library in Marsing will be reading books about the old west and learning from professors that have taught it.

Members will be reading and discussing stories of heroes, heroines, outlaws and others who have left their mark on the western landscape.

The first meeting was held on Feb. 6<sup>th</sup> at the library and the second meeting will be held on Feb. 20<sup>th</sup>.

During the first meeting, “The Virginian” was the novel discussed and “Lame Deer Seeker of Visions” is the topic book for the second meeting.

“A Bride Goes West” will be the topic for the first meeting in March on the 6<sup>th</sup> followed by “Buffalo Girls” on March 20<sup>th</sup>. “Billy the Kid: A Short and Violent Life” will be the topic book for April 3.

Everyone is invited to attend every program or coordinators said those attending can chose the one that is of most interest.

A program scholar will be attending each meeting to bring highlights of the book and the era of the times. Coordinators said the program scholar would normally be a professor from the nearby colleges so plenty of important information will be available. The club is open to everyone of any age group. Door prizes will be awarded for each week from Essence of Life. The Let’s Talk about it Program is sponsored by US Bank, The Idaho Humanities Council and the Idaho State Library.

## Homedale man completes deployment

Marine Corps Lance Cpl. Steve D. Simmons, Jr, son of Lisa Walker of Homedale and Steve Simmons of Fort Lewis, Washington, recently completed a six-month deployment to the Western Pacific and Arabian Gulf while assigned to the 11<sup>th</sup> Marine Expeditionary Unit, based in Camp Pendleton, Calif.

Simmons was one of more than 10,000 Pacific Fleet sailors and Marines aboard the ships of the USS Abraham Lincoln Carrier Battle Group and USS Belleau Wood Amphibious Ready Group.

Simmons is a 2001 graduate of Homedale High School and joined the Marine Corps in July 2001.

## Weather

	H	L	Prec.
Feb. 4	50	30	.33
Feb.5	47	24	
Feb.6	43	21	
Feb.7	40	15	
Feb. 8	55	16	
Feb. 9	no	read	
Feb. 10	50	19	



# Homedale resident target of Nigerian scam

A Homedale resident reported last week that she became a target in a Nigerian letter scam that a spokesman for the Better Business Bureau said has only recently become a problem for residents.

Cindy Simms, Homedale, said last week that she received e-mail asking her to allow a “top government official with a statutory corporation” to “front” as a partner and allow him to “lodge funds speedily” into her account.

The message sent to Simms states that the letter was sent out of “sincere desire to share a mutual business relationship. First, your strictest confidence in this transaction is highly solicited. This is by virtue of its nature as being utterly confidential and top secret.”

The letter states that a man named “Dr. Peter O. Ootobo” is a member of an “ad hoc committee set up by the Federal Government of Nigeria to review contract awarded by past executed, we discovered a huge sum of money amounting to USD41.5M (Forty One Million Five Hundred Thousand US Dollars)” on grossly over invoiced contract already awarded and executed for the Nigerian National Petroleum Corporation. Having Cleaned the AUGEAN STABLE we intend to transfer the balance of USD41.5 M presently floating in our apex bank of Nigeria to our own benefit and advantage.”

Simms said she planned to delete the message when she received it, but the content of the letter left her feeling uneasy.

“It is written in a letter format, like it is someone I know,” Simms said last week. “So I sent a message back to him just to find out how he got my address. I could not think

of anyone that I know of with the address or the name he included.”

Simms immediately received a response back from “Dr. Ootobo” with an overseas phone number for her to call. She said the second letter concerned her because the man stated he would be contacting her by phone, which she never gave her phone number to him.

“I kind of thought it was strange that he would say he was going to contact me, I didn’t think he could because he didn’t know my phone number, but it still made me uneasy,” Simms explained. But on Saturday, much to her surprise, Simms did receive a call from “Dr. Ootobo.”

“I could not believe it,” Simms explained. “He left a message on my cell phone. I never gave my number to anyone that I know of who could give it to him. I have no idea how he ever got it.”

“The Better Business Bureau has been warning businesses for several years not to be tempted by fraudulent letters from Nigeria that offer get-rich-quick schemes,” Nora Carpenter from the BBB said Thursday. “We have done major news broadcasts on this because people have actually fallen for this and when they go out to get their money, some have not come back. We have actually had deaths involved with this scam.

“The so-called ‘Nigeria Letter Scam’ has been around since the early 1990s, scamming businesses nationwide out of millions of dollars. Although small businesses, churches and non-profit organizations have been the primary target, consumers are reporting that these letters are now showing up in their mailboxes at home and on the

Internet.”

Carpenter said that the BBB advises consumers who receive these letters not to provide any personal or banking information to these con artists. “The best thing to do is not respond at all.”

Carpenter said the letters are normally marked “urgent” or “confidential” from Nigeria by mail, fax, or the Internet. She said the sender claims to be an official of a company or government ministry, or has an official-sounding name such as a doctor, chief, lawyer or prince. She said some of the letters have even been written on government stationery.

“To participate you must provide the bank account number and the name, address, phone and fax numbers of your bank,” Carpenter continued. “Using the provided information, the con artist can rob the victim’s bank account or they may try to get money directly by requesting exorbitant payments to cover transfer fees, travel expenses,

taxes or necessary bribes before they transaction can occur. Sometimes the con artist attempts to lure the target to travel to Nigeria. In any case, the con artist disappears with the victim’s money and the victim never receives any of the promised funds.”

Carpenter explained that people who receive a letter or email from a Nigerian scammer should not respond to it at all.

She said people should label the letter “No Financial Loss-For Your Database” and fax it to the U.S. Secret Service Task Force handling Nigerian scam cases at 202-406-6930.

“I want other people to know about this,” Simms said. “It is so easy to fall for something like this and be taken advantage of. I just want people to know.” -CPB



**Veterans of Foreign Wars**

## Chili Feed

Saturday, February 15  
5:00 to 8:00 pm  
\$3.50 per person

**Veterans of Foreign Wars Hall in Wilder**  
(Next to the Polar Bear)

**Public Welcome! Bring some friends & enjoy the feed & Support the Veterans of Foreign Wars organization.**

For more information, Call Larry  
880-1684 or 482-7365

**Keeping Children Safe Panel**  
**Region III Children and Family Services**  
**VOLUNTEERS NEEDED**

- Are you looking for a way to be involved in your community?
- Do you have an interest in the welfare and safety of children?
- Will you be able to give 4 hours a month?

Volunteers are needed immediately to fill positions and serve on an advisory panel for the Department of Health and Welfare. Volunteers meet monthly to review cases and be a voice for children in our community and learn about the services of Region III, Department of Health and Welfare.

**REQUIREMENTS & INFORMATION FOR VOLUNTEERS**

**Location:** Department of Health & Welfare, Caldwell  
**Time:** 1<sup>st</sup> Thursday of the month, 3:00 - 6:00 pm  
**Training:** Education on child protection laws is provided during monthly meetings and at the Keeping Children Safe State Conference in the Fall.

Volunteer forms are available and a background check and fingerprinting are required.  
**Call:** Roxanne Anderson, Chief of Social Work - 455-7025  
Mary Brubaker Comstock, KCS Panel, Chair - 337-3405



## Newly Expanded Service Area – Same Great Benefits

One of the most critical decisions you will make is choosing quality health care coverage. True Blue believes meeting your health care needs require a combination of special care and a wide variety of choices. As we expand our service area, True Blue remains committed to delivering the same extraordinary service, while continuing to grow our network of the area's finest doctors and hospitals. How is this possible? True Blue is backed by Idaho's leading health care insurer: Blue Cross of Idaho.

Join True Blue today to have access to these benefits:

- \$67 monthly premium
- Travel benefit
- Hearing aid and vision benefits
- Preventive dental benefit
- No deductibles or coinsurance
- Worldwide coverage

**Now Serving: Ada, Boise, Canyon, Gem, Owyhee, Payette and Washington Counties**

\* Beneficiaries must maintain Part A and B coverage by continuing to pay the Part B premiums while in True Blue. True Blue is a Medicare Supplement Plan. Pending Federal approval. You must receive all routine care from plan providers. A sales representative will be available to assist with applications. Persons with TDD needs or special needs may get additional information, set up a meeting with a sales representative or contacting True Blue. Please contact True Blue for details.



**True Blue**  
of Idaho  
An Independent Member

**395-82**  
**TDD/TTY**





Field trip

Students and teachers from Pleasant Valley School toured the Avalanche office and Owyhee Publishing's printing plant last Thursday. The group then travelled to the Tim Mackenzie sheep ranch near Homedale.

Federal land grazing fees reduced

The government will charge ranchers less in the coming year to graze their herds on Western federal lands, the Bureau of Land Management and Forest Service announced Thursday. Falling beef prices drove down the grazing fee, which is arrived at using a formula that takes into account private grazing land lease rates, beef cattle prices and the cost of livestock production. Beginning in March, the BLM and Forest Service will reduce its grazing fees from \$1.43 per month to \$1.35 per month for an "animal unit month" - the amount of forage needed for a cow and calf, one horse, or five sheep or goats for a month.

The \$1.35 rate is the lowest the grazing fee can go under a presidential order issued in 1986. The fee applies to BLM and Forest Service lands in 16 Western states - Arizona, California, Colorado, Idaho, Kansas, Montana, Nebraska, Nevada, New Mexico, North Dakota, Oklahoma, Oregon, South Dakota, Utah, Washington and Wyoming.

**ALUMINUM DONATIONS WANTED**  
Veterans Aluminum Drive  
The local Veterans of Foreign wars organization is continuing it's aluminum collection efforts. Money for the sales is used for the promotion of programs that aid veterans in need, promote patriotism, and support local school Americanism program. Individuals or organizations may support by dropping off aluminum at collection boxes at Paul's Market in Homedale or by the Zion Bank in Wilder. If you have cans to donate or if you are a farmer with old aluminum pipe we would be glad to pick it up.  
For information call  
Dick at 896-4465 or Larry 880-1684



**S.M.E.L.L.S.**  
Students from the Students Making Everyone Less Likely to Smoke/Spit teen coalition recently traveled to the State Capitol to provide educational information and promote awareness of the effects of tobacco use. Pictured are Brandon Zatica, Kelly Roberts, Jennifer Anzaldua, Michele Gibbens, Jenni Silveria, KC Miyasako, Erica Miyasako, Amaia Larzelier, Amie Holloway and Melissa Miyasako.

THINKING HOME IMPROVEMENT?

One of the best investments in your home can be installing a high-efficiency Bryant heating & cooling system. It increases your comfort year-round & can save you money.

THINK BRYANT

BAUER

HEATING & COOLING

Residential Commercial

Jerry Perkins  
Homedale • 337-5812  
573-1788 • 337-3674

24 Hour  
Emergency Service

bryant

Heating & Cooling Systems  
Since 1904

Ben & Lori Badiola / Owners

Public input sought on big game hunting proposals

Hunters who pursued big game in Idaho's Southwest region in 2002 should plan on having very similar seasons in 2003. Potential season proposals will be available for public review at several upcoming Fish and Game-sponsored open houses. Plan now to attend and provide input that will help shape this fall's hunting seasons in Idaho's Southwest region. Contact Fish and Game's Nampa office at 465-8465 or the McCall office at 634-8137 for more information.

Topping the list of proposals is one that would limit ATV use in some hunting areas. "The use of ATVs for hunting has been a contentious issue for years now," Fish and Game regional supervisor Al Van Vooren noted. "Some hunters would like to see areas designated such that off-road ATV use is restricted to game retrieval only. We have enough real estate here in Southwest Idaho that we can offer that kind of experience, and we'd like to hear from the public regarding how much and what areas should be managed this way." The open house format allows visitors to come and go during a three-hour period and visit one-on-one with Fish and Game personnel about any topic related to big game seasons. Open houses will be held at these locations from 4:00 p.m. to 7:00 p.m. on the dates indicated:

Boise, Wednesday, Feb. 12 Fish and Game Headquarters 600 S. Walnut  
Mtn. Home, Thursday, Feb 13 Mtn. Home Bingo Parlor 3285 Airbase Road  
McCall, Tuesday, Feb. 18 Fish and Game Office 555 Deinhard Drive  
Nampa, Tuesday, Feb. 18 Fish and Game Office 3101 S. Powerline Road

In addition to several Fish and Game-sponsored proposals, the Department has been requested by outside interests to gather public input on two other issues. One is a suggestion to add July and August to the black bear hunting season in the Selway and Middle Fork elk zones. The other would establish a special antlerless elk season for traditional archery equipment users during an existing muzzleloader season in unit 39.

Written comments collected from open house attendees will be summarized and presented to the Idaho Fish and Game Commission for review and consideration. The Commission will take final action on these and other big game issues from across the state at their March 13 meeting in Boise.

Don't Let  
TAX TIME  
put the  
SQUEEZE  
on you.

Get relief by letting us answer all of your tax questions and concerns. We offer federal and state income tax preparation and accounting services for individuals and businesses. Find out how recent tax law changes affect you and what you can do to decrease your tax burden.

- **Electronic filing - get your refund in 1/2 the time!**
- **Tax Planning • Late returns/prior years**
- **Year-round service • IRS representation**
- **Convenient appointments**
- **Reasonable rates • Fax service**
- **Computerized accounting**

B

C.P.A.'s

BOWEN & PARKER

CHARTERED

Homedale

Mikeal D. Parker, CPA  
4 West Owyhee  
337-3271

Nampa

Ron Bowen, CPA  
624 16<sup>th</sup> Ave. S.  
467-6900

Hours: Monday-Friday 8:00 a.m. to 6:00 p.m.  
Saturday 9:00 a.m. to 2:00 p.m.  
Evening & Weekend Appointments Available



Better Sleep Through Science.®

# President's Day MATTRESS SALE!

*We Believe...*

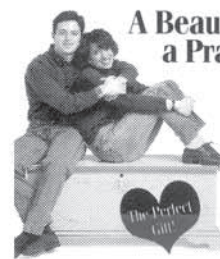
- ★ You'll wake up less!
- ★ You'll sleep more soundly!
- ★ You'll feel more refreshed!

**FREE DELIVERY!** **FREE SET UP & REMOVAL!**

**Beautyrest**  
Better Sleep For The Two Of You

Full SIZE SET	\$399
Queen SIZE SET	\$499
King SIZE SET	\$799

**Don't forget your Valentine!**



**A Beautiful Gift for a Practical Price from Lane!**

The gift she'll always remember! A special selection of Genuine Lane Cedar Chests with fashionable details and affordable price tags!



Similar to illus.



**LARGE OAK GUN CABINET**  
- or -  
**Lane Cedar Chest**

Your Choice...

**\$319**

**EXCLUSIVE NATIONWIDE BUYING GROUP APPLIANCE REBATES!**

Offer Good February 12 through 23, 2003



**GRAND SLAM SPECIALS!**



**\$50 REBATE**



**\$25 REBATE**

**\$50 REBATE**



**Comfort Sale**



features a moveable chaise ottoman



**Save on Lane Leather!**



Continental Select Lane



Lane LEATHER

Continental Select Lane

**KitchenAid®**

**LARGE OAK CHINA CABINET**

**\$599**

Several Styles to Choose From!



**HITACHI BIG SCREEN TV'S**

**50" Dual Tuner Picture in Picture Projection TV**

**\$1499**



**\$60 REBATE**



**\$25 REBATE**

**PRESIDENT'S SALE**

**Parma Furniture Co.**

"Like Having A Friend At The Factory"

108 3rd St. • Parma, Idaho

722-5158 • toll free: 888-722-0078

**FREE DELIVERY • 90 DAYS SAME AS CASH OAC**







Shown with their trophy are the Homedale Freshman girls district champions. The Lady Trojans beat McCall and New Plymouth for the title last week. Pictured are top l to r, Coach Mike Greeley, Cheyanne Andrade, Faith Brasher, Jessica Hansen, Jessica Mooney, Hailey Hall, Sarah Cline, Nicole Cahill, Michelle Uria and Hailee Garrett.

Freestyle and Greco/Roman wrestling signup to be held

The Marsing Youth Wrestling Club will hold Freestyle and Greco/Roman wrestling signups will be held two days this coming week the first on Thursday, Feb. 13 and a follow up signup on Feb. 18 at the Marsing Elementary School gym from 6-7 p.m.

Practice will be held every Tuesday night from 6 p.m. until 7:30 p.m. starting Feb. 18 at the elementary school gym.

Coordinators said the format will be Freestyle and Greco/Roman and the team will travel to Homedale, Nampa, Parma and Weiser for wrestling tournaments.

Each child must purchase a USA Wrestling card for \$30. The card will allow children to participate in all tournaments and will provide insurance coverage in case of injury. Children from five years and up may enroll in the club.

Forfeits plague Huskies in Parma loss

Forfeits ruled the mats and kept the Marsing Huskies down in a 54-27 loss to the Parma Panthers last week.

Marsing forfeited matches in the 103, 112, 119, 130, and heavyweight classes to the Panthers, but scored on three pins and one decision to keep the match close.

German Martinez pinned Jason Maxwell of Parma at 5:21 at 135 pounds. RJ Crosland scored a pin over Dustin Larsen at 1:23 at 171 pounds and Martin Johnson made a quick pin over Isaac Harris at .25 in his match at 215 pounds. Marsing's Perry Gibson scored on a 13-9-decision victory over Eric Nelson at 140 pounds.

Parma scored on three pins, a decision victory and a 16-0 technical fall between Parma's Sean Jorgensen and Jeb Russell.

Seniors  
03

See us for the best selection of  
graduation announcements  
and accessories by

**stylart**

The Owyhee Avalanche  
337-4681

Trojans oust Glenns Ferry 80-0 in Melba Tri-match

Home team place second at Weiser tournament

Homedale made an easy showing at the Melba Tri-match wrestling tournament last week leaving Glenns Ferry scoreless and ousting Melba 63-16. Homedale capitalized on eight pins in 11 playable matches and picked up 12 forfeits. In Weiser, The Trojans fought for a second place tournament title in the Weiser Invitational on Feb. 8-9<sup>th</sup>.

Against Glenns Ferry, Trojans Jeremy Perkins, Cord Engle, Joe Foster, Juan Garcia, Fidel Cardenas and Emanuel Rattoni scored takedown pins and Tyler Christofferson and Mark Mashburn added decision victories.

Christofferson made a 9-4 decision over Jake Coriell at 125 pounds followed by Perkins pinning Robbie Ricjards at 1:25 at 130 pounds.

Mashburn won a 22-6 technical fall over Chris Phillips at 135 pounds and Engle followed at 152 pounds with a 2:36 win over Brett Lehto. Foster pinned Dakota Holland at 160 pounds at 3:35 and Garcia scored a 3:41 pin over Kole Adamson at 171 pounds. Cardenas pinned Josh Navaro at 5 minutes at 189 pounds and Rattoni made an eight-second pin over TJ Sanchez.

The Mustangs were only able to control three matches with two pins and one decision. Mustangs Joey Loop at 145 pounds, Stan Sheirbon at 152 pounds scored pins over Gilbert Obregon and Engle and Jeff Morgan scored a major decision over Foster at 15-5 and 160 pounds.

Kyle Carson added a pin to his record over Joel Hagarman at 140 pounds, Garcia scored a pin over Kyle Agenbroad at 171 pounds and Cardenas made a 12-5 decision over David Mitchell at 189 pounds.

Pedro Hernandez at 215 pounds and Erik Garcia at 275 pounds received default wins.

In Weiser, the Trojans made a strong showing in one of the toughest wrestling tournaments which hosts 18 top teams around the state and eastern Oregon. With one champion and three runner-ups, the Trojans outperformed several bigger schools to take a second place finish.

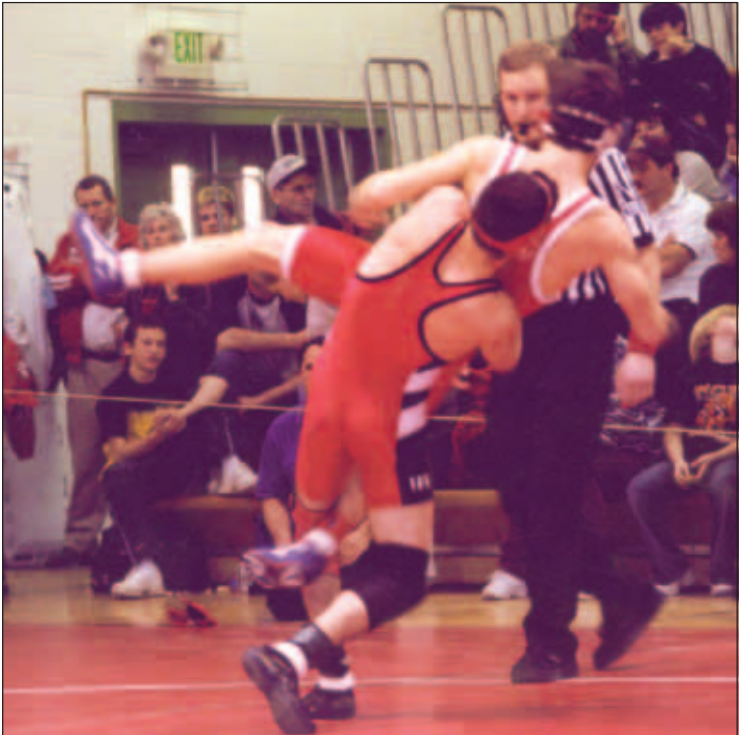
Mountain Home took top honors with a first place finish with 168.5 points. Homedale took a strong second place finish over Vallivue with 131 points. Vallivue finished with 127 points for third place.

Ensley took a first place overall win at 103 pounds followed by three second place finishes by Perkins at 125, Juan Garcia at 171, and Cardenas at 189 pounds. Erik Garcia and

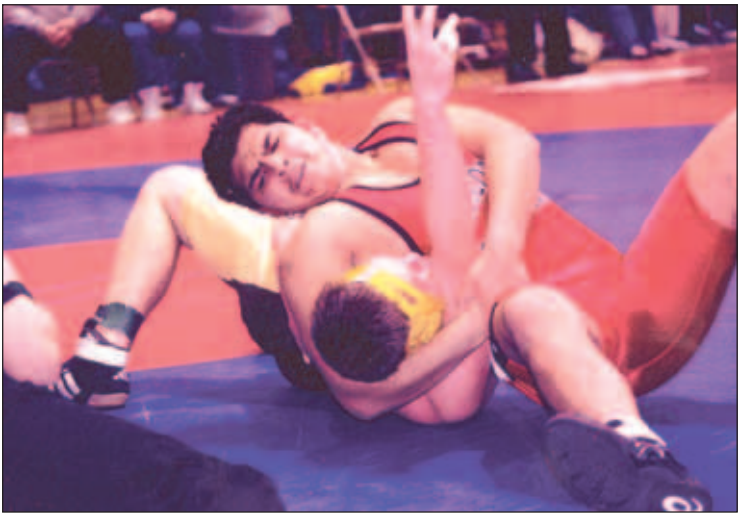
Mark Mashburn won third place honors at 275 pounds and 130 pounds. George and Hernandez placed in the top six at 140 pounds and 215 pounds.

“The Weiser Tournament is one of the toughest around,”

Homedale Coach Toby Johnson said. “We had a fantastic weekend. To place that high at a tournament that tough makes a huge statement about our potential at the state tournament. If we wrestle this well at state, we’ll be one of the top two teams.”



Homedale Trojan Jeremy Perkins picks up long time wrestling contender Talon Vickers from Weiser in a championship match at the Weiser Invitational last weekend. Vickers ended the match with a decision victory over Perkins. Photo by Hap Duryee.



Pedro Hernandez holds on to a Vallivue wrestler for a pin during last week's Weiser Invitational. Homedale placed 2<sup>nd</sup> among 18 teams. Photo by Hap Duryee.

Score a Home Run!

Something you'd like to sell? A lot of "somethings" to sell? You can start a run of eager buyers on your home when you advertise your yard, porch, or garage sale in our Classifieds.

Turn "old" into "gold" by selling all those unwanted items fast!

337-4681

The Owyhee Avalanche



# Homedale and Marsing win tournament openers



Marsing's guard Amber Vestal blocks a Melba player during last week's district tournament opener. Marsing defeated Melba 43-23.

## Trojans stop NC Trojans with second half win

The Homedale Trojans used a strong second half to dribble ahead of the Nampa Christian Trojans in a Class 2A Western Idaho Conference boys basketball game last Tuesday night and score a 68-55 victory over the rival team.

Homedale held a nine-point lead in the first half, but Nampa Christian went on a 7-0 run to close within two points before Homedale's Matt Nauman ended the run with a lay-in for a 30-26 lead. Nauman came off the bench to grab six steals and hit a three-pointer at the end of the game to put Homedale ahead by six.



Austin Gluch drives in for two points in a January 10<sup>th</sup> game against Nampa Christian. Homedale defeated the rival Trojan team 68-55.

### Weekend losses send both teams to elimination games

Local rivals Homedale Trojans and the Marsing Huskies fell into the losers bracket of the 2A District III girls basketball tournament in Middleton last week after Homedale lost to Nampa Christian and Marsing's close loss to number one seed New Plymouth.

Marsing faced Parma Tuesday night as Homedale came up against New Plymouth. Results of those games were not available at presstime, but will be published next week.

Marsing faced Melba in round one of the tournament last Thursday and defeated them 48-23. Homedale followed in round two of district action by beating McCall/Donnelly 43-22. The win put both teams into the winners bracket facing Marsing against New Plymouth and Homedale against Nampa Christian.

The New Plymouth girls made it 3-0 on the season with a 45-39 victory over the Huskies in the semifinals Saturday night.

New Plymouth, the reigning District III champion advanced to face Nampa Christian Tuesday in the championship game at Middleton.

The Pilgrims have struggled with Marsing in the past, winning Dec. 3 40-34 at New Plymouth and Jan. 11 44-42 in overtime at Marsing.

New Plymouth (18-3 overall) fell behind 14-9 after the first quarter and trailed throughout the first half of play. Marsing's Amanda Stewart scored 12 first-half points, helping the fourth-seeded Huskies (10-12) enter the half leading 24-23. The Pilgrims' Megan Pittman drained an NBA-range 3-pointer as time expired to make it a one-point game.

New Plymouth finally took the lead on Erin Kerby's third quarter basket, giving the Pilgrims a 28-26 lead with five minutes left in the quarter.

Marsing managed to trim the lead to just five points — 39-34 — with 4:21 left in the game, but New Plymouth's Justine Lingel ended the threat with six points, in just over a minute, pushing the lead up to 45-35.

Stewart led the Huskies with 21 points.

Homedale started the tournament out with a 43-22 victory over McCall/Donnelly Thursday night. The Trojans used defense to its advantage and a balanced team scoring to secure the win. Homedale held the Vandals to seven points in the first half and allowed no vandal to score more than four points in the game.

Kelsi Haylett led the Trojans with nine points and Jill Cooper added eight points.

Homedale opened with a 9-3 lead over Nampa Christian on a Haylett three pointer. But NC returned with a 27-1 run holding Homedale without a field goal for nearly 13 minutes over three periods and took a

32-10 lead in the third quarter.

Homedale cut the lead to 35-24 with less than one minute left in the third quarter by sinking 11 consecutive points with four players, but a three three-pointers shot NC ahead and extended the lead to 20.

Haylett led Homedale with 10 points.



Michele Gibbens goes up for a shot against McCall in Homedale's first round win of the District Tournament held in Middleton last week. Homedale moved into the second round of girl's basketball for the battle of the Trojans on Saturday.



Trojan Michele Gibbens looks to pass as Nampa Christian's Laura Van Grouw guards her.



School menu

February 13-19, 2003

Marsing

Thursday Feb. 13: Sloppy Joe sandwiches, fruited jello, fresh vegetable stick, variety milk, burrito w/fixing choice, fresh salad bar 4<sup>th</sup>-12<sup>th</sup>, fresh baked roll.

Friday Feb. 14: Red Baron pizza, fruit variety, garden salad w/dressing, rib-b-que on a bun, fresh salad bar 4<sup>th</sup>-12<sup>th</sup>, fresh baked roll.

Monday Feb. 17: No School.

Tuesday Feb. 18: All American hamburger, fruit variety, baked potato wedges, chocolate pudding, variety bilk, soup and sandwich, fresh salad bar 4<sup>th</sup>-12<sup>th</sup>, fresh baked roll.

Wednesday Feb. 19: Taco w/ fixings, refried beans and cheese, fruit variety, variety milk, ceasar chicken wrap, fresh salad bar 4<sup>th</sup>-12<sup>th</sup>, fresh baked roll.

Homedale Elementary

Thursday Feb. 13: Enchilada or corn dog, scalloped potatoes, peaches, frosted brownie, choice of milk.

Friday Feb. 14: Fr. bread pizza or uncrustable peanut butter/ jelly sand, tossed salad, pineapple, cookie, choice of milk.

Monday Feb. 17: No School.

Tuesday Feb. 18: Lasagna or mini corn dogs, corn pears, apple turnover, choice of milk.

Wednesday Feb. 19: Turkey and noodles or tuna sandwich, peas, mandarin oranges, oatmeal cookie, choice of milk.

Bruneau Elementary

Thursday Feb. 13: Hamb/gravy, mashed potatoes, cheese sticks, veggies, fruit, roll/butter, milk.

Friday Feb. 14: Hamb/bun, tots, fresh veggies, fruit, cookie, milk.

Monday Feb. 17: No School.

Tuesday Feb. 18: Chicken fajita, veggies, spanish rice, fruit, milk.

Wednesday Feb. 19: Spaghetti, tossed salad, garlic bread, fruit, milk.

Homedale Middle

Thursday Feb. 13: Enchilada or chicken and noodles, corn fruit, or salad bar, choice of milk.

Friday Feb. 14: Hamburger or hot dog, fries, fruit, choice of milk.

Monday Feb. 17: No School.

Tuesday Feb. 18: Fish nuggets or corn dog, rice, vegetable, fruit, or salad bar, choice of milk.

Wednesday Feb. 19: Chicken filet or CF beef stk, mashed potatoes and gravy, hot roll, fruit, choice of milk.

Homedale High

Thursday Feb. 13: Chicken patty/bun or sandwich choice, fries, fruit, dessert, choice of milk.

Friday Feb. 14: Crispito/taco salad or rib-b-que/bun, corn, fruit, choice of milk.

Monday Feb. 17: No School.

Tuesday Feb. 18: Country fried beef stk or chicken filet, mashed potato/gravy, hot roll, fruit, choice of milk.

Wednesday Feb. 19: Spaghetti or burrito, french bread, salad, fruit, choice of milk.

Food and fun at the Smorgasbord



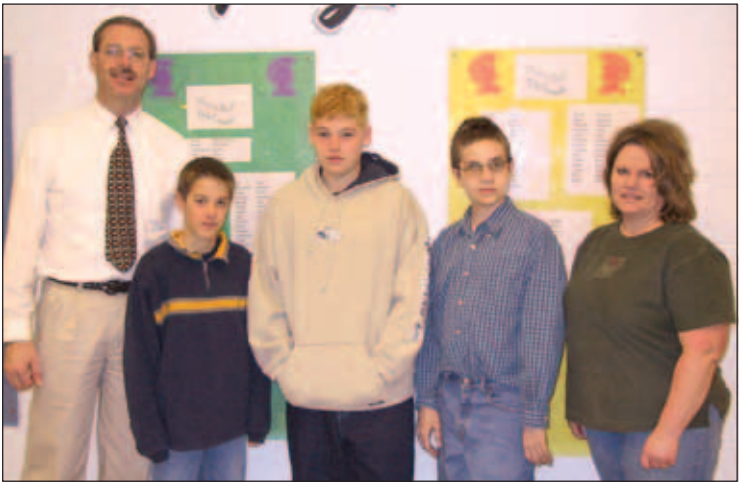
Oriental cuisine was one of the booths offered during last weekend's International Smorgasbord.



Servers got into costume to cheer the atmosphere during the annual event. Proceeds from the smorgasbord are used to help schools defray costs of extra materials and teaching supplies.



Nearly 2,500 people attended last weekend's International Smorgasbord. Although the international cuisine is the main attraction, those attending also enjoyed a silent auction and an art show featuring local talent.



Overall ticket sales winners were Ryan Garrett in second place selling \$418.50, Grant Sweet in third place selling \$411 and Greg Truesdell in first place selling \$421.50. Students sold over \$5,000 in meal tickets before the annual event Saturday. Also pictured are middle school principal Keith Field (left) and co-coordinator Sherri Romriell (right).



Smorgasbord ticket sales winners for the final week were Nichelle Crossland from Mrs. Warren's class, Victoria Stephens from Mrs. Sutherland's class, Rye Hyer from Mrs. Eidemiller's class and Hannah Gibson from Mr. Hann's class. Total sales for the week amounted to \$2,8883. Also pictured are middle school principal Keith Field and co-coordinator Sherri Romriell.



A young child rides atop her mother's shoulders during the annual International Smorgasbord held in Homedale last Saturday.



# Looking back...

from the files of The Owyhee Avalanche and Owyhee Chronicle

## 25 years ago

February 9, 1978

### Trojans clinch Western Idaho Conference championship title

Homedale-A second half comeback put the Homedale Trojans in the driver’s seat, after the Notus Pirates had threatened the perfect record. Homedale finished off the Pirates to the tune of 67-48 Tuesday night.

Homedale now boast 18 wins and no losses for the season, to clinch the WIC championship.

But the pirates threatened the clean no-loss record for the first half, leading the Tros by eight markers at the end of the first quarter. And at halftime Homedale was still trailing by four points.

The third quarter was a reversal. Homedale’s drive put them out front 45-37 at the three-quarter bell, and scored 22 to the Pirate’s eleven in the fourth period.

Homedale’s dead-eye Tony Stone racked up 29 points, followed by Keith Fischer’s 13, and Tom Pegram’s 10. Others Trojans contributing tot he total were Gerald Pearson 9, L. Fischer 2, and one each for Leavitt and Munson.

Pirate point-makers were T. Zabala 10, J. Zabala 6, Hansen 5, Tice 11, Christensen 9, Smallwood 2, and Brumbaugh 5.

### Rimrock best over Marsing

Marsing’s Huskies bean its game against Rimrock Raiders Tuesday night with a strong lead, but couldn’t hold out during the second half, as the Raiders showed a 48-43 lead at the end of the game.

At the end of the first quarter the Huskies had a double score against the opponents, 16-8, but that dropped to 30-26 by halftime. Third quarter clock recorded a tied-up ballgame at 36-36.

Leading both teams at the basket was Rimrock’s Mike Love, with 20. Teammates helping the winning total were Lindell with 7, K. Lawson 5, Mendoza, hatch and Swinney four each, and two each by Myron Frost and Hipwell.

Scoring for Marsing were John Miller and Ted Blackstock with 12 each, Darrell Merritt 11, Usuabel 6, and Robbins, two.

### ‘round Homedale

One hundred four people had their blood pressure taken last Wednesday, Feb. 1. This service is free, the first Wednesday of every month.

Last Tuesday visitors at the Senior Citizens nutrition dinner were: Orpha Travis, Cambridge; George and Inez Meyers, Houston; Mrs. Frank Krezerbeck and Fran Wheelock from AARP, Boise.

After the potluck last Thursday at the Senior Citizen Center, the quests enjoyed two films titles “Seeing Germany, People and Culture” and

“The Land of West Germany.” The films were shown by Ned Stokes, librarian, from the senior high media center.

Eleanor Barnett from the Social Security office, Caldwell, will be at the Senior Center on Feb. 14 at 9:30 a.m. for mass redetermination of SSI. From 1-1:30 p.m. and from 2:30-3 p.m., Barnett will be available for general questions.

GED (adult education) classes will be held on Thursdays from 4 to 6 p.m. at the Senior Citizen Center.

Last weekend Dwaine Pickrel and family moved from his home in Napton to Parma. Sunday, Mr. and Mrs. Earl Pickrel went to Parmas to help celebrate Jed Pickrel’s 18<sup>th</sup> birthday, in the new home.

Friday, Feb. 3, Arthur Goodloe moved from the Caldwell Memorial hospital tot he Homedale Nursing Home.

A busload of Senior Citizens went to the ice carnival at McCall, last Saturday. It was foggy until they reached Middleton. Temperature at McCall was 49 degrees and they had a wonderful time.

## 50 years ago

February 12, 1953

### 4-H Club leaders are reorganized

Meeting of 4-H Club leaders f the Homedale area, was held Thursday, February 5, at the home of Mrs. Lillian Radcliffe. The meeting called to order by Mrs. R. H. Macy, was to reorganize for the coming year. Present were Mrs. Manford Stimmel and Mrs. Mildred Sweep of the Homemakers Club; Mrs. Radcliffe and Mrs. John Jesenko, Saints of the Skillet; Mrs. Ira Vanderhoff and Mrs. Oliver Walker, Dressmakers Club, and Mrs. Frances Mrak and Mrs. Macy, leaders of the Stitch-a-While Club. A guest was Mrs. Verner Swensson.

Anyone between the ages of 9 and 21 who are interested in any phase of 4-H: cooking, sewing, freezing, canning or livestock, please contact the 4-H leader of the vicinity in which you live.

### Homedale to get tri-weekly train

Beginning Monday, February 16, there will be train service at the U. P. depot, on Mondays, Wednesdays and Fridays.

### Garrity’s Cafe get remodeled

Garrity’s Cafe reopened this week following a remodeling program which has given a new look to the establishment. The management relocated the restaurant kitchen by placing it at the back of the building, and moving the lunch counter towards the rear. Booths and tables have been placed forward of the new kitchen. The result of the change has been to give Garrity’s a fresh and roomy appearance.

### Marsing LDS Ward to give play

Marsing – The LDS Ward at Marsing will go to McDermott Saturday to put on a one-act play and chorus for the Indians on the McDermott reservation. The male quartette is composed of Messrs. Jack Taggart, Nowell and Reid Larsen and Wendell Walker.

### Charles E. Yost with 24<sup>th</sup> Infantry

Army Pvt. Charles E. Yost, whose wife, Melbas Lee, and parents, Mr. and Mrs. Harold E. Yost, live on Route 1, Wilder, Idaho, recently arrived in Japan and is now serving with the 24<sup>th</sup> Infantry Division.

Now receiving intensive field training, the 24<sup>th</sup> is part of the security forces in Japan. Before being rotated out of the line early in 1952, it spent 19 months in Korea.

World War II veterans will remember this same division fought on New Guinea and through out the liberation of the Philippine Islands. The 24<sup>th</sup> suffered minor casualties from strafing during the infamous Pearl harbor bombing on December 7, 1941.

Private Yost, who attended the Homedale high school, entered the Army last June.

### Marsing locals

Mrs. Anne Maxwell said that her grandson, Elmer Maxwell, seaman first class is serving in the Korean war zone aboard the USS Chara. Elmer graduated from the Marsing high school in the class of ’51.

Mr. and Mrs. Reuben Reich spent the weekend at Madras, Oregon, visiting her sister and brother-in-law, Mr. and Mrs. Mel Price.

Mr. and Mrs. M. A. Marsing called at the home of Roy Gano, Friday evening.

Mrs. Jack Edwards entertained the Marsing Bridge club at hear home Saturday.

The Ralph Bowmans and Dale Dobbins were hosts for their Saturday night pinochle party. High prizes went to Doris Bish and Cecil Bish; low prizes to Ronald Dobbins and Donna Thrush.

## 134 years ago

February 8, 1868

COUNTRY AFFAIRS. As will be been by referring to the proceedings of the County Commissioners, which we publish today, Geo. W. Grayson has been appointed County Commissioner to fill the vacancy caused by the non-assumption of the duties of the office by H. B. Eastman, who was elected last fall. We are pleased with Mr. Grayson’s appointment; owning large property in the County, an energetic business man, and upright in his dealings, there is abundant reason to believe, and exceedingly gratifying to know that the “right man is in the right place.” Thanks to the egregious blunders of the last Idaho Legislature, and owing to the uncertain meaning that is suspended like a dark cloud over the brightest effusions of that august body, Owyhee County has been woefully injured. It is provided in one of the most perspicuous emanations of that bright galaxy of law-makers that the payment of certain things purchased and certain labor performed for the County shall be in warrants drawn on what is called the 45-per cent fund; but in their profound wisdom they omitted to provide in a way that could be understood such a fund, and the consequence is that 45-percent fund scrip is not worth more than twenty cents, and would not be worth that much did not people retain the belief that a relief bill will be passed at the next session of the Legislature, which in justice cannot be refused. At the recent session of the county Commissioners it was ordered that hereafter warrants drawn on the 45-percent fund shall be valued at he rate of twenty-six and two-thirds cents on the dollar. For example: A commodity worth \$26.62 in cash, if sold to the County would be paid for in a \$100 warrant on the 45-percent fund ...c. Although well intended, we question the expediency of this order, for merchants will not sell goods to the County at cash prices and then take scrip for payment at 20 9/3 cts. on the dollar when only twenty cents can be realized. It is necessary that stationery, wood. ...c., be furnished the County officers, and food and clothing for the prisoners. As a case in point, we noticed Sheriff Springer, a few days ago, making some necessary purchases for the jail. He was compelled to go security for the County, and promised to pay so and so if the County refuses. No one can blame the merchants. A nice predicament! is it not, for a County that possesses the elements of wealth and greatness that Owyhee does? Such a state of things is humiliating in the extreme, but can not be remedied at present. The better way of conducting the County affairs to make as few expenditures and keep the County debates small as possible until the meeting of our next Legislature, which would do well to commit the existing Statutes of Idaho to the flames and make an effort to frame something more consistent.

THE PREVAILING FINE WEATHER has brought out the Spring fights earlier than usual. Last Sunday, two fellows who had imbibed an average quantity of tangle-let, concluded that they must decide who was the better man. They foamed at the mouth, pulled each other’s hair, spilt a small quantity of claret, and were separated by the crowd, who to the number of hundred soon gathered round.

A THEATER. We learn that arrangements are being made for building a Theater at an early day, on Jordan Street, just below the Mechanics Hall. It is a laudable and doubtless will be a profitable enterprise, as the morality and prosperity of the County are sufficiently advanced to justify the introduction of the Black Crook. Whit Swan and other popular leg-dramas. We’re glad that Othello with soon be himself again.



Commentary

Summary judgement

Does the due process clause protect property?

by William Perry Pendley  
President, Mountain States legal Foundation

In 1985, Montana’s Legislature enacted a Stream Access Law that opened private property to public entry for the undefined, but broadly-inclusive, purpose of “recreation.” Specifically, the Act declared that although the land beneath and adjacent to non-navigable streams is private property, any member of the public desiring to recreate on such streams could go onto private property to do so.

The abuses of these “no-man’s lands” by the public are now well-known. Scenic river banks were befouled with trash, garbage, and human waste. Carefully maintained riparian areas, once lush habitat for livestock and wildlife, were trampled. Trickling streams near urban areas became hangouts for drunks and drug addicts—one elderly woman feared approaching the brook on her lot where her grandchildren played; they play there no more!

Perhaps the most outrageous abuse occurred during the horrific wild-fires of 2000, when hundreds of thousands of acres were in flames. The fire danger was so extreme, throughout Montana, that all federally- and state-owned recreational lands were closed—every park and every forest. Remarkably, newspapers across the state told their readers who wanted to recreate to use privately owned land. Under the Stream Access Law, the media advised, landowners could not stop them.

In May 2000, several Montana landowners, some direct descendants of the men and women who settled Montana in the 1800’s, challenged the Stream Access Law’s constitutionality. They did not seek “just compensation” for the taking of their property—the time for that had long since expired—but sought instead invalidation of the law as contrary to the Due Process Clause. They argued that the “due process of law,” without which they could not “be deprived of life, liberty, or property,” required that Montana demonstrate a rational basis or even, given that property is a fundamental right, a compelling governmental interest for denying them the most basic right of every landowner: the right to exclude others. No reason cited by Montana or environmental groups met either test.

In January 2001, the Montana federal district court granted the motions filed by Montana officials and a host of environmental groups, which had lobbied for the “right” of all citizens to access whatever stream they desired. Relying on a ruling by the Ninth Circuit, the district court held that the landowners’ only constitutional remedy was to seek “just compensation” for a “taking” of their property for “public use.” Their case was dismissed.

On December 23, 2002, the Ninth Circuit, relying on one of its earlier rulings, upheld the district court’s decision. The Ninth Circuit held that because the Fifth Amendment grants property owners the specific right to “just compensation” if their property is taken by governments, the more general protections afforded “life, liberty, [and] property” by the Due Process Clause are null and void. The Ninth Circuit’s ruling means that no property owner may challenge the authority of a unit of government to regulate or seize his property as a violation of the Due Process Clause; the owner may seek only just compensation. Thus, the Ninth Circuit has read the words “property” and “public use” out of the Due Process Clause.

These brave landowners, who had the courage to expose themselves to the vitriolic attack leveled against them by opponents of private property, leftist in the media, and the environmental movement, believe that the Ninth Circuit’s ruling is wrong. They intend to seek Supreme Court review. However, the Supreme Court’s pronouncements on the relationship between the Takings Clause and the Due Process Clause have not been the epitome of clarity.

Nonetheless, not even the curious and often convoluted rulings of the Supreme Court on this subject lend any support to the Ninth Circuit’s evisceration of the Due Process Clause. Today the Ninth Circuit is famous as the most frequently and consistently overturned of the federal appellate courts, often with unanimous Supreme Court rulings. Its ruling on Montana’s infamous Stream Access Law could be next.



On the edge of common sense

Baxter Black, DVM

Quit while yer ahead

Sometimes you should just quit when you’re ahead.

Dr. T, DVM meant well. Of course, that was the same week he set a cat on fire. He remarked it’s hard to blow out a Persian.

Mr. Hardy called Dr. T out to his place on New Year’s Eve to replace a cervical prolapse. It was a big cow and close up to calving. Tranquilizer guns are popular in northern Alabama. It saved having to drive the cow to the catch pen. Easier on the cow and the client. It worked smoothly. The prolapse was soon returned to its natural position and the exit sutured shut.

Gathering his instruments, Dr. T had a charitable thought, “Ya know, Mr. Hardy, she’s gonna calve in a few days and you’re going to have to catch her again to remove the suture. While we’ve got some help, let’s load her in the stock trailer and drop her in your corral. Save you a lot of time next week.”

Mr. Hardy debated in his mind, figured the extra hay would be worth it, and agreed. Using the tried and true universal cowboy loading method, they secured two non-slip halter loops around her head. Then Mr. Hardy and his son each ran the standing part of their lariat through one side of the trailer and poised themselves to pull. The cow being the rock in the slingshot.

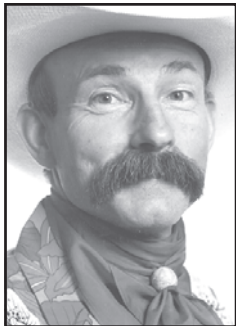
Dr. T eased up on the woozy cow who still lay on her brisket on the downside of the hill from the trailer. “Alright,” he yelled, “When I hit her with the hot shot, she’s gonna jump up and run in the trailer! Be ready, I’ve done it a million times!”

She rose alright, but went in reverse. Pulling back slowly and steadily, she then parked herself in a leaden stupor. Dr. T quickly instructed Mr. Hardy to drive around and back up to her with the trailer close enough so they could just push her in. This new idea appeared like it was going to work. They lined her up sideways to the 5 1/2 foot wide trailer and managed to lift her two front feet up into it, so she was now catterwampus across the narrow opening.

Then Dr. T and Mr. Hardy’s son got under her rear end and on the count of three lifted her 3 feet off the ground! They pushed. She flipped over on herself, pinning her head beneath her body. She was wedged tighter than the shrink wrap in a new tool from Ace Hardware. They pulled, they pushed, they grunted, they yanked, she would not budge. Then her body sank in complete relaxation. She had suffocated.

Mr. Hardy walked back from the cab to find Dr. T staring at the huge inert beast stuffed sideways in his trailer. “Doc,” he said in disbelief, “I just gave \$700.00 for that cow two weeks ago!” “Well,” said Dr. T regaining his composure and trying to figure out what to charge for this call, “She won’t bring that now.”

Epilogue: The cat was only singed, thank goodness, and Dr. T is now a regulatory veterinarian.



Letter to the editor

State took away my dental benefits

I am on Medicaid, and this session, the legislature took away my dental benefits. I am afraid because I don’t know how I am going to get my teeth taken care of. This is not an acceptable way to save money.

A good way to save money is to try to lower the cost of prescription drugs. If Idaho formed a prescription drug buying pool, we could by medicine in bulk and get lower prices. This could really help our budget.

Everyone should contact their legislators and let them know that they support health care for all Idahoans!

Cindy Young  
Homedale



X - Property to be annexed Proposed Ordinance #344  
CITY OF HOMEDALE



YOU WILL PLEASE TAKE NOTICE that a public hearing before the HOMEDALE CITY COUNCIL will be held on the 27<sup>th</sup> day of February, 2003 at 730 p.m. at Homedale City Hall, 31 W. Wyoming, Homedale, Idaho. Subject matter of the hearing is annexation of certain real property set forth in the map published herewith, and zoning map changes to include property proposed for annexation. The public is invited to attend and provide input.

PAMELA K. DUGGER  
Homedale City Clerk/Treasurer

2/12.19/03

**NOTICE OF HEARING  
PUBLICATION  
Case No: CV-2003-01806  
IN THE DISTRICT  
COURT OF THE THIRD  
JUDICIAL DISTRICT OF  
THE STATE OF IDAHO,  
IN AND FOR THE  
COUNTY OF OWYHEE**

In the Matter of the Estate of  
MERL WILSON KYGAR,  
a.k.a. MERL WILSON KYGER,  
a.k.a. MERL W. KYGAR,  
Deceased Person.

1. NOTICE IS HEREBY GIVEN that on the 29<sup>th</sup> day of January, 2003, LOLA MAY KYGAR filed with this Court a Petition for Administration of Estate Where Spouse is Sole Beneficiary.
2. A copy of the Petition is on file with the Clerk of the Court and may be reviewed upon request.
3. The Petition has been set for hearing in the court at Homedale, Idaho, on Wednesday, the 19<sup>th</sup> day of March, 2003 at the hour of 10:30 o'clock a.m.

DATED: 3<sup>rd</sup> day of February,  
2003.

LOLA MAY KYGAR,  
Petitioner.  
David E. Kerrick  
1001 Blaine Street  
Post Office Box 44  
Caldwell, ID 83606-0044  
Telephone: 208-459-4574  
Facsimile: 208-459-4573

2/12.19.26/03

## NOTICE OF TRUSTEE'S SALE

On May 27, 2003, at the hour of 11:00 o'clock am of said day, in the lobby of Pioneer Title Company, 100 10<sup>th</sup> Ave. South, Nampa, Idaho, CHARLES C. JUST, ESQ., Attorney at Law, as Successor Trustee, will sell at public auction to the highest bidder, for cash, in lawful money of the United States, all payable at the time of sale, the following described real property, situated in the County of Owyhee, State of Idaho, and described as follows to wit:

See attached Exhibit "A"

The Trustee has no knowledge of a more particular description of the above referenced real property, but for the purposes of compliance with Section 60-113 Idaho Code, the Trustee has been informed the address of Rt. 1 Box 751 S. Bruneau Highway, Marsing, Idaho, is sometimes associated with the said real property.

Said sale will be made without covenant or warranty regarding title, possessions or encumbrances to satisfy the obligation secured by and pursuant to the power of sale conferred in the Deed of Trust executed by Josette Ann Aldrich, an unmarried woman, as Grantor(s) with First Security Bank, NA as the Beneficiary, under the Deed of Trust recorded February 16, 1999, as Instrument No. 227532, in the records of Owyhee County, Idaho. The Beneficial interest of said Deed of Trust was subsequently assigned to Crestar Mortgage Corporation now doing business as Suntrust.

recorded May 24, 1999, as Instrument No. 228655. The Beneficial interest of said Deed of Trust was subsequently assigned to Aurora Loan Services recorded January 16, 2003, as Instrument No. 242222, in the records of said County.

THE ABOVE GRANTORS  
ARE NAMED TO COMPLY  
WITH SECTION 45-1506(4)(a),  
IDAHO CODE. NO  
REPRESENTATION IS MADE  
THAT THEY ARE, OR ARE NOT,  
PRESENTLY RESPONSIBLE  
FOR THIS OBLIGATION.

The default for which this sale is to be made is the failure to pay the amount due under the certain Promissory Note and Deed of Trust, in the amounts called for thereunder as follows: Monthly payments in the amount of \$508.95 for the months of August 2002, through and including the date of sale, together with late charges and monthly payments accruing. The sum owing on the obligation secured by said Deed of Trust is \$63,759.43 as principal, plus service charges, attorney's fees, costs of this foreclosure, any and all funds expended by Beneficiary to protect their security interest, and interest accruing at the rate of 6.5 percent from July 1, 2002, together with delinquent taxes plus penalties and interest to the date of sale.

The Beneficiary elects to sell or cause the trust property to be sold to satisfy said obligation.

Dated this 17<sup>th</sup> day of January,  
2003.

Paula Peterson  
Trust Officer for  
Charles C. Just, Esq.  
381 Shoup Avenue, Ste. 211  
P.O. Box 50271  
Idaho Falls, Idaho 83405  
(208) 523-9106 FAX (208)  
523-9146

Exhibit "A"

A parcel of land being a portion of Government Lot 3 and Government Lot 4, Section 14, Township 2 North, Range 4 West, Boise Meridian, Owyhee County, Idaho, more particularly described as follows:

COMMENCING at a Southwest corner of Government Lot 4, said Section 14; thence

South 89° 56' 00" East 1,030.92 feet along the Southerly boundary of said Section 14 to a point on the Westerly meander line of the Snake River, also said line being the Easterly boundary of said Government Lot 4; thence leaving said Southerly boundary of Section 14

North  $11^{\circ} 09' 39''$  East 1,315.33 feet along the said meander line and Easterly boundary of said Government Lot 4 to a point; thence leaving said meander line and Easterly boundary

North 89° 54' 55" West 190.62 feet to a point on the centerline of a County Road (Bruneau Highway), also said point being the TRUE POINT OF BEGINNING; thence continuing

North 89° 54' 55" West 311.38  
feet to a point; thence

North 10° 04' 30" East 304.62  
feet, parallel with the centerline of

said Bruneau Highway, to a point;  
thence

South 89° 54' 56" East 311.38 feet to a point on the said centerline of the Bruneau highway; thence along said centerline

South 10° 04' 30" West 304.62  
feet to the TRUE POINT OF  
BEGINNING

2/5,12,19,26/03

**PUBLIC NOTICE  
BEFORE THE OWYHEE  
COUNTY BOARD OF  
COMMISSIONERS**

On March 3, 2003, at 11:30 AM, the Owyhee County Board of Commissioners will review the final plat of Purdom Hills Subdivision No. 2. Subject parcel is 14 acres in size and is located west of Homedale in Section 7, Township 3 North, Range 5 West, Boise Meridian, Owyhee County, Idaho.

2/12/03

Have  
a news tip?

***Call us!***

**337-4681**



# Public notices

## NOTICE OF TRUSTEE’S SALE

On May 27, 2003, at the hour of 11:00 o’clock am of said day, in the lobby of Pioneer Title Company, 100 10<sup>th</sup> Ave. South, Nampa, Idaho, CHARLES C. JUST, ESQ., Attorney at Law, as Successor Trustee, will sell at public auction to the highest bidder, for cash, in lawful money of the United States, all payable at the time of sale, the following described real property, situated in the County o fOwyhee, State of Idaho, and described as follows to wit:

See attached Exhibit “A”  
The Trustee has no knowledge of a more particular description of the above referenced real property, but for the purposes of compliance with Section 60-113 Idaho Code, the Trustee has been informed the address of Rt. 1 Box 751 S. Bruneau Highway, Marsing, Idaho, is sometimes associated with the said real property.

Said sale will be made without covenant or warranty regarding title, possessions or encumbrances to satisfy the obligation secured by and pursuant to the power of sale conferred in the Deed of Trust executed by Josette Ann Aldrich, an unmarried woman, as Grantor(s) with First Security Bank, NA as the Beneficiary, under the Deed of Trust recorded February 16, 1999, as Instrument No. 227532, in the records of Owyhee County, Idaho. The Beneficial interest of said Deed of Trust was subsequently assigned to Crestar Mortgage Corporation now doing business as Suntrust, recorded May 24, 1999, as Instrument No. 228655. The Beneficial interest of said Deed of Trust was subsequently assigned to Aurora Loan Services recorded January 16, 2003, as Instrument No. 242222, in the records of said County.

THE ABOVE GRANTORS ARE NAMED TO COMPLY WITH SECTION 45-1506(4)(a), IDAHO CODE. NO REPRESENTATION IS MADE THAT THEY ARE, OR ARE NOT, PRESENTLY RESPONSIBLE FOR THIS OBLIGATION.

The default for which this sale is to be made is the failure to pay the amount due under the certain Promissory Note and Deed of Trust, in the amounts called for thereunder as follows: Monthly payments in the amount of \$508.95 for the months of August 2002, through and including the date of sale, together with late charges and monthly payments accruing. The sum owing on the obligation secured by said Deed of Trust is \$63,759.43 as principal, plus service charges, attorney’s fees, costs of this foreclosure, any and all funds expended by Beneficiary to protect their security interest, and interest accruing at the rate of 6.5 percent form July 1, 2002, together with delinquent taxes plus penalties and interest to the date of sale.

The Beneficiary elects to sell or cause the trust property to be sold to satisfy said obligation.

Dated this 17<sup>th</sup> day of January, 2003.

Paula Peterson  
Trust Officer for  
Charles C. Just, Esq.  
381 Shoup Avenue, Ste. 211  
P.O. Box 50271  
Idaho Falls, Idaho 83405  
(208) 523-9106 FAX (208) 523-9146  
Exhibit “A”

A parcel of land being a portion of Government Lot 3 and Government Lot 4, Section 14, Township 2 North, Range 4 West, Boise Meridian, Owyhee County,

Idaho, more particularly described as follows:

COMMENCING at a Southwest corner of Government Lot 4, said Section 14; thence

South 89<sup>o</sup> 56’00” East 1,030.92 feet along the Southerly boundary of said Section 14 to a point on the Westerly meander line of the Snake River, also said line being the Easterly boundary of said Government Lot 4; thence leaving said Southerly boundary of Section 14

North 11<sup>o</sup> 09’ 39” East 1,315.33 feet along the said meander line and Easterly boundary of said Government Lot 4 to a point; thence leaving said meander line and Easterly boundary

North 89<sup>o</sup> 54’55” West 190.62 feet to a point on the centerline of a County Road (Bruneau Highway), also said point being the TRUE POINT OF BEGINNING; thence continuing

North 89<sup>o</sup> 54’55” West 311.38 feet to a point; thence

North 10<sup>o</sup> 04’30” East 304.62 feet, parallel with the centerline of said Bruneau Highway, to a point; thence

South 89<sup>o</sup> 54’56” East 311.38 feet to a point on the said centerline of the Bruneau highway; thence along said centerline

South 10<sup>o</sup> 04’30” West 304.62 feet to the TRUE POINT OF BEGINNING  
2/5,12,19,26/03

THOMAS E. MOSS  
UNITED STATES ATTORNEY  
ALAN G. BURROW  
ASSISTANT UNITED STATES ATTORNEY  
FLORIDA STATE BAR  
#FL1327921  
DISTRICT OF IDAHO  
WELLS FARGO CENTER  
877 WEST MAIN STREET,  
SUITE 201  
BOISE, IDAHO 83702  
MAILING ADDRESS: BOX 32  
BOISE, IDAHO 83707  
TELEPHONE: (208) 334-1211  
FACSIMILE: (208) 334-1414  
Attorney for Plaintiff

NOTICE OF MARSHAL’S SALE  
CV99-0293-S-MHW  
UNITED STATES  
DISTRICT COURT FOR THE  
DISTRICT OF IDAHO

UNITED STATES OF AMERICA, Plaintiff, vs. LEONARD J. BLOSSOM AND WILMA BLOSSOM, Husband and Wife, Defendants

Under and by virtue of an Amended Order of Default Judgement and Decree of Foreclosure rendered out of the United States District Court for the District of Idaho, and filed on the 7<sup>th</sup> of August, 2001, and the Order of Sale being issued on the 10<sup>th</sup> day of January, 2003 in the above-entitled action, wherein the United States of America, the above-named Plaintiff, obtained a judgment against the Defendants Leonard J. Blossom and Wilma Blossom in the amount of

**\$48,199.88** plus costs and interest as specified in said decree;

I am commanded to sell the personal property situated in Owyhee County, State of Idaho, as one sale parcel as described below:

1 baler NH Model 315 1970 SN#28860

1 swather NMH model 1970 Pull 114

1 baler NH Model 426 1989 SN#771122

1 tractor/loader White Model Z-62 1985 SN#00794

NOTICE IS HEREBY GIVEN that on the 6<sup>th</sup> day of March, 2003 at 11:30 am of said day, (or if the

United States Marshal is unavoidably detained, immediately upon his arrival) on the front steps of the Owyhee County Courthouse, Murphy, Idaho, I will sell the heretofore-described personal property to the highest and best bidder for cash in lawful money of the United Sates of America.

The terms of the sale are as follow: A personal check in the amount of ten percent (10 percent) of the bid will be accepted at the time of the sale, with a certified or cashier’s check for the full amount of the bid to be delivered to the United States Marshal within 24 hours of the time of the sale. Upon delivery of the aforementioned certified or cashier’s check, the personal check will be returned. If the full purchase price has not been received within 24 hours of the time of the sale, the ten percent (10 percent) deposit will be forfeited to the United States Marshal to offset costs involved. The United States and only the United States may enter a credit bid at the sale of the personal property up to the amount of the judgment and costs and interest as set forth in the judgment. DATED this 5<sup>th</sup> day of February, 2003

PATRICK E. MCDONALD  
United States Marshal  
for the District of Idaho  
2/12,16,26-3/5/03

## NOTICE OF TRUSTEE’S SALE

On Friday, the 6<sup>th</sup> day of June, 2003, at the hour of 10:00, o’clock a.m. of said day (recognized local time), at Owyhee County Courthouse located at HWY 78, Murphy, ID 83650, in the County of Owyhee, State of Idaho, Michael L. Schindele, as Successor Trustee, will sell at public auction, to the highest bidder, for cash, in lawful money of the United States, all payable at the time of the sale, the following described real property, situated in the County of Owyhee, State of Idaho, and described as follows, to-wit:

See Exhibit “A” which is attached hereto and by this reference made a part of.

The Trustee has no knowledge of a more particular description of the above-referenced real property, but for purposes of compliance with Idaho code, Section 60-113 Idaho Code, the Trustee has been informed that the address of 406 1/2 North Edison Rd., Marsing, ID 83639 may sometimes be associated with said real property.

Said sale will be made without covenant or warranty regarding title, possession or encumbrances to satisfy the obligation secured by and pursuant to the power of sale conferred in the Deed of Trust executed by Michael J. Cook and Vicki L. Cook, husband and wife, as Grantor(s), to Pioneer Title Insurance Company, as Trustee, Michael L. Schindele, as Successor Trustee, for the benefit and security of American General Finance, Inc., as Beneficiary, said Deed of Trust dated March 25, 2002, and recorded March 26, 2002, as Instrument No. 239072, Mortgage Records of Owyhee County, Idaho.

THE ABOVE GRANTORS ARE NAMED TO COMPLY WITH SECTION 45-1506(4)(A) IDAHO CODE. NO REPRESENTATION IS MADE THAT THEY ARE, OR ARE NOT, PRESENTLY RESPONSIBLE FOR THIS OBLIGATION.

The default for which this sale is to be made is the failure to pay when due, under Deed of Trust Note dated March, 25, 2002, the monthly payments for principal, interest and impounds of \$354.60, for the

month(s) of October 19, 2002, through the current month and year, and all subsequent payments until the date of sale or reinstatement with all accrued interest, late charges and expenses. The Principal balance owing as of this date on the obligation secured by said Deed of Trust is \$31,599.00, plus accruing interest. All delinquent payments are now due, together with accruing late charges and interest, unpaid and accruing taxes, assessments, trustee’s fees, attorney’s fees, and any amounts advanced to protest the security associated with this foreclosure and that the Beneficiary elects to sell or cause the trust property to be sold to satisfy said obligation.

DATED this 3<sup>rd</sup> day of February, 2003.

MICHAEL L. SCHINDELE  
Successor Trustee  
P.O. Box 1990  
Boise, Idaho 83701  
Telephone: (208) 342-2241  
EXHIBIT A

The land referred to in this commitment/policy is situated in the State of Idaho, County of Owyhee and is described as follow:

BEGINNING at the Southeast corner of Section 29, Township 3 North, Range 4 West, Boise Meridian, Owyhee County, Idaho; thence

North 378.00 feet to a point; thence

West 25.00 feet to the TRUE POINT OF BEGINNING; thence

North 150.00 feet; thence

West 75.00 feet; thence

South 150.00 feet; thence

East 75.00 feet to the TRUE POINT OF BEGINNING.  
2/12,19,26-3/5/03

## NOTICE OF TRUSTEE’S SALE

On the 21<sup>st</sup> day of May, 2003, at the hour of 10:45 A.M., of said day, (recognized local time), in the lobby of the Owyhee County Courthouse, Murphy, in the County of Owyhee, State of Idaho.

First American Title Company of Idaho, Inc., an Idaho Corporation, as successor trustee, will sell at public auction, to the highest bidder, for cash or cashiers check (cash equivalent), in lawful money of the Untied States, all payable at the time of sale in compliance with Section 45-1506(9) Idaho Code, the following described real property, situated in the county of Owyhee, State of Idaho, and described as follow, to-wit:

Lot 7 and 8 of JAKUBOWSKI SUBDIVISION, in Government Lots 4 and 5, Section 7, T1N R3W, B.M., Owyhee county, according to the official plat thereof filed July 9, 1984 as Instrument No. 181411,

Owyhee County records.

The Trustee has no knowledge of a more particular description of the above referenced real property, but for the purposes of compliance with Section 60-113 Idaho Code, the Trustee has been informed that according to the County Assessors office, the address of HC 79 Box 1125, Melba, Idaho, is sometimes associated with said real property.

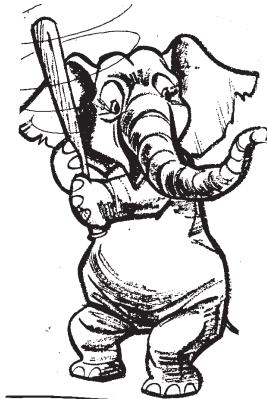
Said sale will be made without covenant or warranty regarding title, possession or encumbrances to satisfy the obligation secured by and pursuant to the power of sale conferred in the deed of trust executed by LUCINDA J ESCLICK, an unmarried person, as grantor, to FIRST AMERICAN TITLE COMPANY OF IDAHO, INC., an Idaho Corporation, as successor trustee, for the benefit and security of M and T Mortgage Corporation, as beneficiary, recorded May 30, 2001, as Instrument No. 236008, and assigned to WELLS FARGO HOME MORTGAGE, INC., as beneficiary, by assignment recorded July 23, 2001, as Instrument No. 236571, Mortgage Records of Owyhee County, Idaho.

THE ABOVE GRANTORS ARE NAMED TO COMPLY WITH SECTION 45-1506 (4)(A), IDAHO CODE. NO REPRESENTATION IS MADE THAT THEY ARE, OR ARE NOT, PRESENTLY RESPONSIBLE FOR THIS OBLIGATION.

The default for which this sale is to be made is the failure to pay when due, under Deed of Trust Note, the monthly payments for Principal, Interest and Impounds of \$1,175.70, due per month for the months of September through November, 2002 and all subsequent payments until the date of sale or reinstatement, with a monthly late charge accruing at \$47.58, with interest accruing at 7.25 percent per annum, and continuing to accrue from August 1, 2002. The principal balance owing as of this date on the obligation secured by said Deed of Trust is \$137,914.84, plus accruing interest, costs and advances. All delinquent amounts are now due, together with accruing late charges and interest, unpaid and accruing taxes, assessments, trustee’s fees, attorney’s fees, and amounts advanced to protect the security associated with this foreclosure and that they beneficiary elect to sell or cause the trust property to be sol to satisfy said obligation.

Date: January 16, 2003  
FIRST AMERICAN TITLE COMPANY OF IDAHO, INC.  
Elishia M. Ricky Trust Officer.  
FA-15157/7023.26095  
1/29-2/5,12,19/03

## Score a Home Run!



Something you’d like to sell? A lot of “somethings” to sell? You can start a run of eager buyers on your home when you advertise your yard, porch, or garage sale in our Classifieds.

Turn “old” into “gold” by selling all those unwanted items fast!

337-4681

The Owyhee Avalanche



Public notices

NOTICE OF TRUSTEE'S SALE

On May 13, 2003, at the hour of 3:00 o'clock pm of said day, on the Owyhee County Courthouse, State Highway 78, Murphy, Idaho 83650, CHARLES C. JUST, ESQ., Attorney at Law, as Successor Trustee, will sell at public auction to the highest bidder, for cash, in lawful money of the United States, all payable at the time of sale, the following described real property, situated in the County of Owyhee, State of Idaho, and described as follows to wit:

See Attached Exhibit "A"  
The Trustee has no knowledge of a more particular description of the above referenced real property, but for purposes of compliance with Section 60-113 Idaho Code, the Trustee has been informed the address of HC 79 Box 1305, Melba, Idaho, is sometimes associated with the said real property.

Said sale will be made without covenant or warranty regarding title, possessions or encumbrances to satisfy the obligation secured by and pursuant to the power of sale conferred in the Deed of Trust executed by David G. Howells and Paulette R. Howells, husband and wife, as Grantors(s) with Republic Mortgage Corp., a Utah Corporation as the Beneficiary, under the Deed of Trust recorded

December 3, 1997, as instrument No. 223454, in the records of Owyhee County, Idaho. The Beneficial interest of said Deed of Trust was subsequently assigned to Old Kent Mortgage Company, recorded December 3, 1997, as Instrument No. 223455. The Beneficial interest of said Deed of Trust was subsequently assigned to Mortgage Electronic Registration Systems, Inc. recorded November 14, 2000, as Instrument No. 234335, in the records of said County.

THE ABOVE GRANTORS ARE NAMED TO COMPLY WITH SECTION 45-1506(4)(a), IDAHO CODE. NO REPRESENTATION IS MADE THAT THEY ARE, OR ARE NOT, PRESENTLY RESPONSIBLE FOR THIS OBLIGATION.

The default for which this sale is to be made is the failure to pay the amount due under the certain Promissory Note and Deed of Trust, the amounts called for thereunder as follows: Monthly payments in the amount of \$770.21 for the months of July 2002 through and including to the date of sale, together with late charges and monthly payments accruing. The sum owing on the obligation secured by said Deed of Trust is \$86000.33 as principal, plus service charges, attorney's fees, costs of this foreclosure, any and all funds

expended by Beneficiary to protect their security interest, and interest accruing at the rate of 8.00% from June 1, 2002, together with delinquent taxes plus penalties and interest to the date of sale.

The Beneficiary elects to sell or cause the trust property to be sole to satisfy said obligation.

Dated this 10<sup>th</sup> day of January, 2003.

Paula Peterson  
Trust Officer for  
Charles C. Just, Esq.

PO5051

Exhibit "A"

A parcel of land being a portion of the West Half of the Northwest Quarter of Section 14, Township 1 South, Range 3 West, Boise Meridian, Owyhee County, Idaho and more particularly described as follows:

BEGINNING at an aluminum cap making the Northwest corner of said Section 14; thence along the Westerly boundary of said West Half of the Northwest Quarter of Section 14

South 00° 37'50" West 333.98 feet to an iron pin; thence

South 89° 19'33" east 663.12 feet to an iron pin; thence

North 00° 39'50" East 333.70 feet to an iron pin; thence

North 89° 18'06" West 663.31 feet to the REAL POINT OF BEGINNING.

EXCEPTING THEREFROM all oil, gas, gravel, mineral and geothermal rights, as reserved in the Warranty Deed recorded January 14, 1988 as Instrument No. 194136, Owyhee County records.

CHARLES C. JUST  
381 Shoup Avenue, Ste. 211  
P.O. Box 50271  
Idaho Falls, Idaho 83405  
(208) 523-9106 FAX (208) 523-9146

1/22,29-2/5,12/03

Keep informed

Read  
The Avalanche

It's Your Special Year

2003

GRADUATING SENIORS

Be at the top of the class with classy graduation announcements. come see our wide line of graduation supplies by

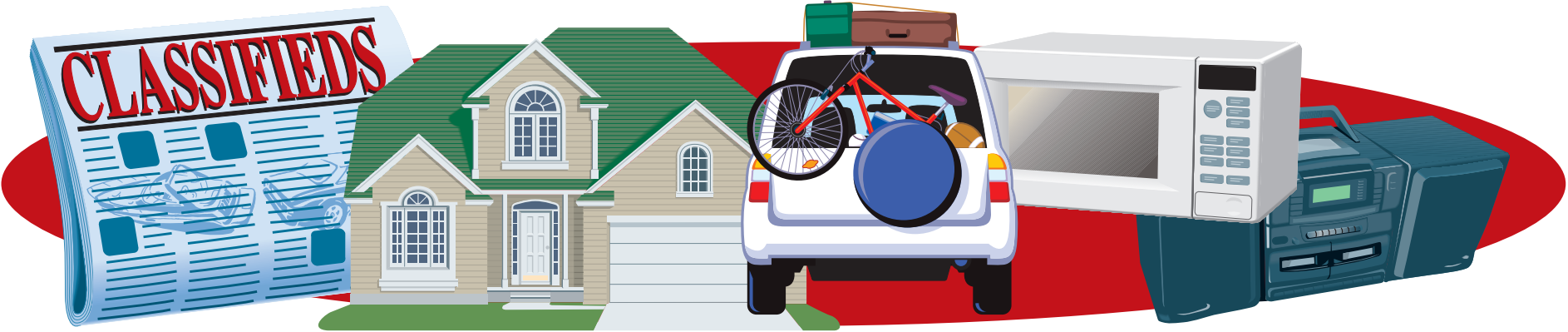
stylart®

The Owyhee Avalanche

337-4681

<h1>THE BUSINESS DIRECTORY</h1>				
<b>CERTIFIED LOCKSMITH</b>  <b>HARVEY'S AUTO PARTS</b> <b>LOCKSMITH &amp; TOWING</b> KEYS MADE • LOCKS REPAIRED <b>EMERGENCY OPENINGS</b> 211 MAIN ST. MARSING, ID • 896-4643	<b>ELECTRICIAN</b> <b>H&amp;H ELECTRIC</b> Serving Owyhee County for 25 years <b>Jeff Haylett</b> <b>337-4881</b>	<b>SIGNS &amp; BANNERS</b> <b>Allied Sign</b> <small>INCORPORATED</small> Banners, Windows & Vinyl Located in and Serving all of Owyhee County. Also serving Canyon & Malheur Counties <b>337-6215</b> UPS SHIPPING	<b>SAND &amp; GRAVEL</b>  <b>Owyhee Sand, Gravel &amp; Concrete</b> <b>337-5057 • 337-4597</b> <b>208-573-2341 • 208-573-2343</b> <b>HOMEDALE, IDAHO</b> ALL TYPES OF ROCK & DIRT STATE CERTIFIED DRAIN ROCK FREE ESTIMATES ON ROADS & DRIVEWAYS <i>Chuck, Ray &amp; Bill Maxwell</i>	<b>CARPENTRY</b> <b>ELCarris carpentry</b> General Carpentry Addition - Remodel Decks - Repairs Shop - Storage <b>Marsing, Idaho</b> <b>896-4632</b>
<b>HEALTH CARE</b>  <b>THE CLINIC AT WILDER</b> <b>RENEE KINDLER, FNP</b> 215 3rd St., Wilder <b>Ph - 482-7430</b> After Hrs - 208-327-8016	<b>SIDING CONTRACTORS</b> <b>MGM</b> <b>Siding Contractors</b> <i>William T. Bruce</i> 1024 W. Finch Dr. Nampa • 465-0214 • Fax 465-9831 Vinyl, Steel & Aluminum Siding Vinyl Windows  <b>Craftsmanship You can Trust</b>	<b>AUTO REPAIR</b> <b>River Country</b> <b>AUTO SALES</b> <b>TRUCKS, CARS &amp; 4X4'S</b>  <b>208-896-4530</b> BUGGIES RESTORED & TRADED COUNTRY PRICES • NO CREDIT OK • BUY HERE, PAY HERE <b>932 MAIN • P.O. BOX 338 • MARSING, IDAHO</b>	<b>AUTO SALES</b> 	<b>CHIROPRACTIC</b> <b>HOMEDALE CHIROPRACTIC CENTER</b>  <b>J. Edward Perkins, Jr. D.C.</b> 111 S. Main <b>337-4900</b>
<b>ADVERTISING</b> <b>YOUR AD HERE!</b> <b>\$10.00 PER WEEK</b> <b>OWYHEE AVALANCHE</b> <b>337-4681</b>	<b>COMPUTER REPAIR</b>  Providing a variety of services including upgrades, repairs, and maintenance. Home and office visits too!! <b>Computer Home Repair</b> Located next to the post office on Main Street in Marsing. Tel: 208-412-5133 Look for our shop to open second half of Feb. Available for service calls now!!	<b>BED LINERS</b> <i>Quality work from start to finish</i> <b>Auto Body by Alan</b> Auto Glass • Frame & Unibody Repair • Collision Repair • Custom Paint • All Work Guaranteed <b>Alan Bahem</b> Rt. 1, Graveyard Pt. Rd. Homedale, ID 83628 (208) 337-4837 Mobile 250-4837	<b>AUTO BODY</b>  <b>BOWEN &amp; PARKER</b> <small>C.P.A.'s</small> <b>Mikeal D. Parker, CPA</b> • 4 West Owyhee • P.O. Box 905 • Homedale, ID 83628 <b>337-3271</b> <b>Ron V. Bowen, CPA</b> • 624 16th Ave S. • P.O. Box 41 • Nampa, ID 83653 <b>467-6900</b>	<b>ACCOUNTING</b>
<b>HOME CARE</b> <i>A Special Touch</i> <b>Home Care, Inc.</b> <i>In YOUR Home Care</i> Licensed Staff • Medicare Medicaid • Private Pay 216 W. Idaho PO Box 933 Homedale, ID 83628 (208) 337-5343	<b>SPORTING CLAYS</b>  <b>IDAHO SPORTING CLAYS</b> <b>337-4826</b> 3 Miles south on Hwy. 95 from Homedale, turn West on Graveyard Point rd., go 4 miles and turn South on Sage. Go over the first hill and we're on the left. <b>GIFT CERTIFICATES AVAILABLE</b>	<b>HEALTH SERVICES</b> <b>Homedale Clinic</b> <b>Terry Reilly Health Services</b> <b>Richard Ernest, CRNP</b> Family Nurse Practitioner <b>Kate Ryan, M.D.</b> 108 E. Idaho, Box 1058 Homedale, Idaho 83628 <b>337-3189, Night 466-7869</b> Additional hours Tuesday evenings	<b>HEALTH SERVICES</b> <b>Marsing Clinic</b> <b>Terry Reilly Health Services</b> <b>Faith Young Peterson, CRNP</b> Family Nurse Practitioner <b>Penny Beach, M.D.</b> 201 Main Street, Marsing, Id. 83639 <b>896-4159, Night 466-7869</b> Additional hours Thursday evenings	<b>CHIROPRACTIC</b> <b>MARSING CHIROPRACTIC</b>  Joe Saccoman, D.C. "Find it, fix it, leave it alone." Adjustments From \$20 Special Attention to Injuries Tele: 208-896-5520





## REAL ESTATE AUCTION

28490 Scott Pit Rd., Parma, Idaho  
**Wednesday, March 5, 2003 1:00 PM**



- \* 19.5 acres—with a FANTASTIC view
- \* Outdoorsman's dream—located in the McConell Island area. Bordered by the Boise and Snake Rivers
- \* Partially fenced yard, garden spot, Livestock areas, Irrigation, RV Parking, VIEW! 1246 Square Feet 1999 Champion Manufactured Home. 3 bedrooms, 2 Baths, Formal Dining, Parma School District, Central Air Conditioning—Electric Heat, 1 year home warranty

Call for Auction Terms and Property Information:  
Rich Pickett-208-250-4767  
Steve Cordell-208-941-7871  
Pickett Auction Service: 455-1419  
Silverhawk Realty: 459-4326  
Tour pictures at [www.idahoproperties.org](http://www.idahoproperties.org)



## ROW CROP EQUIPMENT RETIREMENT AUCTION

**MONDAY, FEBRUARY 17, 2003**  
OWNER: DALE MORGAN

Located from Parma ID 2 miles North on Hwy 95 to Klahr Rd then 1 mile West to Apple Valley Rd then 1/2 mile North. Signs posted.  
Sale Starts 11:00 AM/MT Lunch served.

Terms: cash or bankable check sale day. No Buyer's Premium. No Credit Cards.

**TRACTORS & ACCESSORIES:** IHC 1086, deluxe cab, 18.4 X 38 rubber, recent major • M F 180 diesel, single front, 11.2 X 38 rubber • M F 180 diesel, wide front, 12.4 X 38 rubber • M F wide front, fits 180 • M F single front, fits 180 • set of 11.2 X 48 duals, like new • set of 16.9 X 38 rail snap on duals • set of 15.5 X 38 powershift rims • 2- tractor console radios • misc front tires and rims

**TRUCKS & TRAILERS:** 1977 Chevy C-60, V-8, 5spd 2spd, combination bed w/hoist & livestock sides 1 owner, 18K miles • 1976 Chevy Bonanza 4X4, 3/4 ton, 400 V-8, auto 1984 Subaru Brat w/T-Tops • 1990 Ford F-350 dually w/5<sup>th</sup> wheel hitch, 460 V-8, 5spd 18' tandem axle enclosed 5<sup>th</sup> wheel trailer setup w/2 pressure steam cleaners and parts racks • 40' semi storage van • 2- small utility trailers

**CORVETTE:** 1989 Corvette convertible, tuned port 350, auto trans, exc cond.

**TILLAGE:** 14' Brillion roller harrow • Hutchmaster 14' tandem disc, exc cond. • IHC 140 4 bottom spinner plow • 12' hyd scraper w/gauge wheels • Brillion 12' smyerz w/3pt carrier • KMC 6 row rolling cultivator • JD 14' spring shank cultivator w/gauge wheels 3pt 12' expanded metal roller • 3 section 5' metal harrow • 2 section 6' metal harrow 5 row sled corrugator • 5 row Western VM corrugator • 5 shank corrugator w/markers 3pt PTO furrow opener • 3pt hyd ditcher • 10' 3K cultivator • 6 row 3pt bed harrow several cultivator bars w/tools • Nyssa Machine 3 row straw shredder

**PLANTERS:** • Planet Jr. 6 row planter w/extra parts, exc cond. • JD 70 6 row planter, rolling fin, gandy's, set up for alfalfa • JD 70 6 row corn & bean planter • Ventura 6 double row planter • JD 12' single disc grain drill • Allied 6" X 40' PTO auger • 3pt onion fluffer windrower

**SPRAY EQUIPMENT:** 1000 gal poly nurse tank w/transfer pump • Century 200 gal poly sprayer w/booms • Mitchell 3pt sprayer w/booms • front spray boom fits MF 180

**BALER:** Gehl 1500 PTO round baler

**BEE EQUIPMENT:** 6- good bee house trailers • 6- 4X8 bee houses • approx 1000 bee boards

**SHOP & CULTIVATOR TOOLS:** 30' ext. ladder • 12' alum picking ladder • pickup fuel tank, dual compartment • Thor 11Klb. 12V RV wench • Macpherson stock saddle, exc cond. • portable livestock loading chute • hilling discs • Alloway cultivator parts • FFA pesticide signs • set of Martin hyd markers • 2- sets of Ace rolling fins • shanks, shovels, gauge wheels & clamps

**ALSO CONSIGNED:** 1974 Chevy C-65 tandem truck, 427 V-8, 5spd 4spd, air brakes, 20' belt bulk bed, recent overhaul • 1973 Chevy C-65 tandem truck, V-8, 5spd 4spd, 20' belt bulk bed • Lockwood XL spud harvester • Lockwood 3 row pick lock load box Lockwood seed elevator

This is a very clean line of equipment well cared for & maintained. For colored pictures of this and upcoming auctions please check our website @ [bakerauction.com](http://bakerauction.com)

## BAKER AUCTION CO.

**1-800-650-5808**

ROGER BAKER	Col. ELLIS ALBRIGHT	
541-889-5808	208-466-0169	
BOB HOGG	J.B. SALUTREGUI	SAM BAKER
208-549-1980	541-212-3278	541-889-8413

Visit our website at: [www.bakerauction.com](http://www.bakerauction.com) for colored pictures & full listing of this and upcoming auctions.

## BAKER AUCTION CO. EARLY SPRING CONSIGNMENT AUCTION

**SATURDAY, MARCH 8, 2003**

Located: At the Homedale Beet Dump, Homedale ID. Signs Posted.  
Sale Starts 10:00 AM/MT Lunch Served.

Terms: Cash or bankable check sale day. No buyer's premium. No Credit Cards.

**TRACTORS:** JD 4020 powershift trans, low hrs • N H 1114 diesel swather 12' header • IHC 844 w/loader

**VEHICLES:** 1991 Dodge short box auto 2 wheel drive • 1972 GMC Bus, 43 passenger, 318 Allison diesel auto

**TRAILERS** 1989 Brothers walking floor trailer • 1986 Peerless walking floor trailer

**EQUIPMENT:** 14' ground hog smyerz front, pipe rear • Hutchmaster 13.6 offset disc JD 900 7 shank ripper • Case 5 bottom on land plow • IH 4 bottom plow • JD 3 bottom plow • N H 1032 stacker • hay rake • JD 11' disc • 4- sets of harrows • N H manure spreader • set of Ace 3pt 60' spray booms • 3pt 9 row corrugator w/markers & slickouts 14' tire roller Martin built • 2- GI air plane tugs 4X4 w/crab steering 360 Chrysler engines • fuel tanks, water tanks, livestock equipment 3- cultivator bars w/spacers 2- 12' Eversman landplanes • 3pt 6' blades • grain drill • Hobson 3 row straw mulcher Brittonia 36 row band sprayer • 3pt ditcher

This is just a partial listing. To consign your equipment please contact JB Salutregui @ 541/212-3278 or any of the Baker Auction Co. Personnel listed below.

## BAKER AUCTION CO.

**1-800-650-5808**

ROGER BAKER	Col. ELLIS ALBRIGHT	
541-889-5808	208-466-0169	
BOB HOGG	J.B. SALUTREGUI	SAM BAKER
208-549-1980	541-212-3278	541-889-8413

Visit our website at: [www.bakerauction.com](http://www.bakerauction.com) for colored pictures & full listing of this and upcoming auctions.

## Clair & Sharon Case Retirement FARM AUCTION

**SATURDAY, FEBRUARY 15, 2003 - 11:00 A.M.**

**Located:** From Marsing Idaho go East on HWY 55 over Snake River bridge. Then turn right on Marsing Road then continue for 1 mile to Chicken Dinner Road turn right on Chicken Dinner proceed South 3 miles to sale site. **Signs Posted.**

**Terms:** Cash or bankable check on sale day. Nothing to be removed until settled for. All property sold as is. Lunch available. Free coffee. **No Buyer's Premiums!**

**Tractors and Combine:** Case D-B 1212 Diesel tractor, cab and fan's, power shift, trans wide front, 18.4.30 rubber, 2 sets remotes. • Case D-B 1210 Diesel tractor w/roll canopy, STD trans, wide front, 15-5-38 rubber, and 2 sets remotes. • 1953 Case DC gas tractor, live power and HYD's w/3 PT, 13.6.38 rubber single front (very good condition). • Massey Ferguson 510 Diesel Combine Cab and air w/straw chopper and 16' quick tach grain platform.

**Pickup:** 1977 J-20 3/4-ton Jeep pickup w/toolbox and hand pump HYD lift crane.

**Hay Equipment:** New Holland 903 12' Windrower, New Holland 277 Hay Baler, New Holland 1002 Pull Stacker Wagon, Ford PTO Hay Rake, Case 3 PT. 7' Mowing Machine, 20' Hay Elevator w/ B and S engine, Farm Hand 8-10 Bale HYD Bale Fork.

**Planter and Cultivators:** JD 6 Row 71 Flex corn bean planter mounted on diamond bar and a frame, MM 10' Double Disc Grain Drill (on steel), 4-Grandy w/ electric motors, 6- Row Planet Jr. w/bar, 5 row 3 PT Corrugators w/ Markers, 3 PT. HYD Rod Weeder, 4 Row 4 Spider Rolling Cultivator, Alloway 6 Row S Tine Cultivator, 10' 3 PT. 3 K with leveling bar, 2- 3 PT T-Bar Cultivators.

**Ground Working Equipment:** 14' 3 PT Mohawk Chisel Plow w/gauge wheels spring loaded shanks (w/removable wings), IHC 314 Trip Beam Plow, IHC 314 Solid Beam Plow, Case 3 PT. 2 Bottom Plow w/extra bottom's, 6' Ace Plow Packer w/hitch, Case 3 PT. Single Prong Ripper, 3 PT. Chatten Ditcher, 2-5 Harrows, 3-5 Harrows, 3 PT. Harrow Carrier, 10' Case Disc on rubber, 10' Cutlpacker, Eversman 329 Land Plane, Eversman 3 PT PTO Furrow Opener, Rotary Hoe (pull type), 12' Finger Weeder.

**Misc. Equipment:** 225 Gal 55 Pull Sprayer w/ 30' Ace Booms, 65 Gal 3 PT Sprayer, New Idea 2 Row Pull Corn Picker w/extra husking beds, Ace 12' Steel Frail Beater, 155 Gallon Propane Weed Burner (pull), Case PTO Manure Spreader Teflon Floor, 30' Mulkey Paddle Elevator, Gated or sprinkler pipe trailer, 4 wheel steel bed dump wagon w/hoist, Berkley PTO irrigation pump, 2-2 wheel trailers, 24' Tandem Axle Trailer.

**Misc.:** Powder River Squeeze Chute, 8' Slide in Stock Rack, 2-3 PT. Tractor Lift Boom's, Stratton 2 ton Shop Crane adjust leg's and boom (good), air bumper jack, 1000 LB Platform Scales, Garden Tractor Trailer (like new), like new garden push cart, Stile Chain Saw, 7-HP B and S engine, cultivator clamps shovels sweeps HYD cylinders, gauge wheels back pack sprayers, (and more)

**Grainaries and Irrigation:** 1500 BU-American, 1000 BU-Kropkare, 500 BU-Farm Master, 800 BU Wooden, 300 Siphon Tubes 1/2"-3", 6" Irrigation Water Meter, 6", 8", 10" Aluminum Tee's and Elbows, misc. gated pipe, gaskets gates, sprinkler parts, 400 gaskets for recessed gated pipe gates, Pam Dispenser, 4 boxes baler twine, 2-CT Honda 90's (for parts), 12 tractor wheel WTS, misc. garden hand tools, misc. household items, 2-foot lockers, antique nut cracker, bucket of thunder eggs.

**Auctioneers note:** Clair has sold his farm and is retiring. Clair has taken good care of his equipment with everything in good working order. Announcements on sale day take precedence over print.

## Rudd Auction Company

16911 Garnet Rd. • Wilder, Idaho • 83676

Lonnie Rudd Homedale, Idaho 208-337-4350 • 208-573-1687	Darren Krzesnik Homedale, Idaho 208-337-4993	Scooter Lacrone New Plymouth, Idaho 208-278-5475
---	--	--

## FOR RENT

At Pioneer Mobile Home Park, large lot in country park 2 miles from Homedale. Home must be 1990 or newer. Trash/water/septic tank paid. \$165/mo +\$165/ deposit. Space also has a dog kennel. 208-337-4589.

**Apartment 1 bdrm 1 bath \$300** per mo. new carpet and paint, 220 Montana Apt. # 5, 337-3474

**Senior Citizen housing available** at Westfield Plaza in Wilder, 1 bdrm apartments to qualified renter, rent rate based on income level. Call 482-7750 for further info. Equal housing opportunity.

**2 MH south of Marsing 2 bdrm \$300.** a month, 3 bdrm \$350. a month. Call 896-5667 or 896-5038 or 989-1055

## SPACES FOR RENT

**HOMEDALE'S NICEST MOBILE HOME PARK**

- Spacious single or double wide spaces
- Convenient to shopping, schools & city services
- Clean, quiet family park
- On site manager
- Water/Sewer/Trash provided
- Cable T.V. Available
- Will accept older homes in good condition

(We also have mobile homes for sale ready to move into NOW with low down payment)

## Sunset Village



Mobile Home Park  
401 S. Main • Homedale, Idaho  
See managers space #42  
**(208) 337-5804**  
or 884-1700

## HOMEDALE GARDEN APARTMENTS

FOR SENIOR CITIZENS and/or HANDICAPPED OR DISABLED PERSONS

**RENT BASED ON INCOME**  
USDA/RURAL DEVELOPMENT FINANCED

GIVE US A CALL: (208)337-4715  
409 SOUTH FIRST WEST  
HOMEDALE, IDAHO 83628



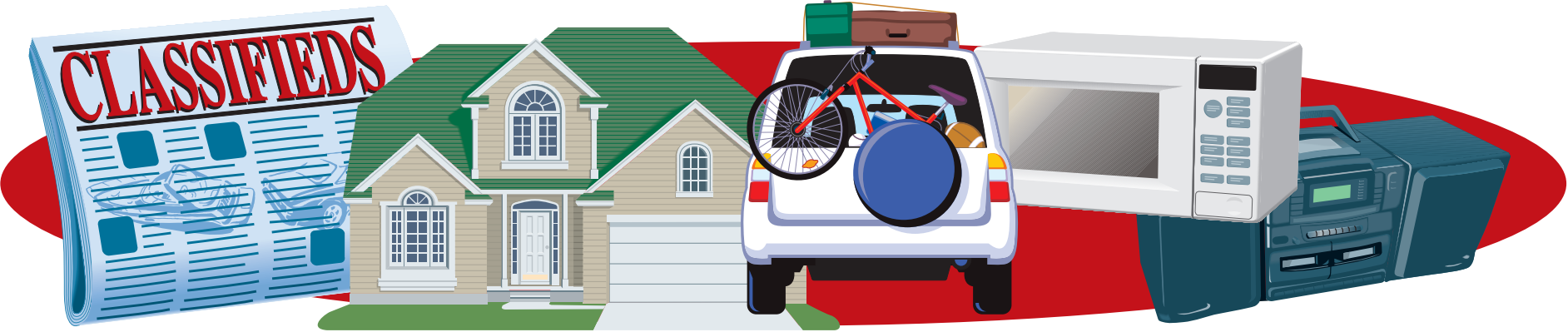
## BUS. OPP.

**\$\$ Your hours = The Boss' Fortune!** Create your own serious income with your own home-based business! Free booklet. Full training. [www.yourlifeawaits.com](http://www.yourlifeawaits.com) 800-440-2183

## Have a news tip?

Call us!  
**337-4681**





**INTEREST RATES  
LOWEST IN YEARS!**  
*See us for..*  
**Home Loans  
Home Equity Loans**

**PACIFIC REPUBLIC  
MORTGAGE  
CORPORATION**  
**Mike Lipinski**  
208-896-4297 • 208-442-3636

**REAL ESTATE**  
**Are you looking to buy a home?**  
You can view all the homes listed in Southwest Idaho on my website (updated 3 times daily) [www.kentssimon.com](http://www.kentssimon.com) Kent Simon Mountain Valley Properties.  
**234 W. Washington** 3 bdrm 1.75 bth, large lot, beautiful brick fireplace, large 2 car garage, \$85,000 Call Kent Simon, Mountain Valley Properties 336-5251  
**26523 Morris Place** 4 bdrm 3 bth home w/large master bdrm and

**PRICE REDUCED!**  
1 bedroom, 1 bath, nice back yard, extra storage, covered patio, RV parking and dump, commercial possibilities, perfect place outside city life, \$49,900  
320 N. 5th, Wilder.  
Call Mary today @ 794-0141  
[www.realmary.com](http://www.realmary.com)  
Mountain Valley Properties

**DESERT HIGH  
REAL ESTATE**  
Marsing Office - 896-4624  
[www.deserthighrealestate.com](http://www.deserthighrealestate.com)

**HOMEDALE OFFICE**  
**Lori Rasmussen**  
**337-4593**  
Licensed in Idaho and Oregon

**2500 SQ FT. HOME WITH A VIEW**

Spacious, comfortable home on 4+ city lots with a great view of the river. Wrap around deck, covered patio, great gardens, sauna, rec room with wet bar, lots of storage, work shop, quiet neighborhood near shopping & schools. A Bargain @ \$100,000.

**COLDWELL BANKER**  
**ASPEN**  
**GEORGE WILSON  
JOHN CONTI**

**896-5312 • 890-4770 • 880-7829**  
View Properties At: [www.idaholand4u.com](http://www.idaholand4u.com)

**GREAT SET-UP FOR THE LARGE FAMILY**  
5 Bedroom, 2 Bath. Could be 7 bedroom  
\$104,000

**SNAKE RIVER VIEW**  
Hill top 5 Acres. 2400 sq. ft. 4 bed/ 2 bath home. Sun Room.  
Large Great Room \$264,000

**OWNER WILL CARRY. BUILDING LOT**  
6 Acres. Live water. Power - Fenced - Pressurized irrigation  
\$5K Down - \$59,000

**6 ACRES - BRING HORSES**  
3 bedroom, 2 bath, 2 car garage. Fenced, Irrigation, Top of hill.  
\$134,900

**1 ACRE HORSE SET UP**  
2 car Garage & Shop, 2 bay horse barn, 3 stall horse barn & Tack Room.  
5 bedroom, 3 bath 2400 sq. ft. home. Next to BLM. \$129,000

**BUILDING SITES**  
• 2.2 Acres, underground utilities, paved road, vinyl fence. \$28,500  
• 6.3 Acres Overlooking Snake River Valley, underground utilities, paved road \$51,900  
• 2.6 Acres fenced white vinyl, irrigation, utilities \$26,500

**FOR SALE**  
Used tractor parts 100's of salvaged farm tractors and combines. Nampa Tractor Salvage, 9055 Hwy 20, Nampa, ID 83687. (208) 467-4430.  
**Roll ends:** Great for packing material, building fires, lining birdcages or for your kids to doodle on. The Owyhee Avalanche, Homedale.  
**Italian leather couch and loveseat** Brand new still wrapped in plastic, retail \$1450 must sale \$895. 208-888-1464.  
**Bedroom set 5-piece** cherry set brand new in box list \$1450 must sale \$399. 208-888-1464  
**Bed-queen pillowtop mattress set**, brand new, still in plastic. List \$700, sacrifice \$165. Queen orthopedic set, brand new. Value \$499 sacrifice \$135. 208-866-7476.  
**King-sized pillowtop mattress set**. New, in bag, with warranty. Value \$800 sacrifice \$235. 208-866-7476

**Registered Angus Bulls** yearlings and 2 year olds, performance tested, guaranteed. Burgess Angus 337-4094  
**Nice sofa, lounge chair**, 2 occasional chairs, coffee table, 9-drawer dresser w/mirror and matching night stands - \$500 for all. Also, pool table \$500, poker video game \$250, camper shell \$35. 337-3016  
**Solid oak entertainment center**, like new \$150., 86 stereo system w/8 track, AM/FM and phonograph record player, plus records and 8 tracks \$150. 337-4003.

**By owner** for sale building lots with a view 2.25 acres to 1.75 acre lots, with power, phone and irrigation. Call Charlie 337-5990 or 250-4937  
**Kubota tractor** 19 HP 4 wheel drive HST, Kubota Rototiller 60", Post Hole Digger and Brush Hog 60", Johnson Front end loader-blade 6 ft. \$10,000 337-3308  
**Burn Barrels** 30 gal size \$5. each. Owyhee Publishing, Homedale.  
**1<sup>st</sup>, 2<sup>nd</sup>, 3<sup>rd</sup> cutting**, In stack, 36 T oat hay, 4x3x8 Freeman bales, 500 T leafy alfalfa 4x3x8 Freeman bales, 120 T leafy alfalfa 2 string bales \$70. to \$90. per ton, cash or cashiers check. 541-339-4314  
**Over 1000 used bricks**, great for landscaping \$100., Older Dewalt Radial Arm Saw \$75., non-running old-rear tine rototiller \$40., 1962 IH Scout for parts \$50. 896-4487 evening.  
**Puppies for your Valentine!** \$10. each. Black Chow mix. See at 27255 Peckham Road, Wilder.

**WANTED**  
**Wanted:** Peacocks 896-4671  
**Going to prison?** Elderly gentlemen in Homedale area looking for ride-share to ICC Prison to visit inmate. Will pay gas. Call Gary at 482-7653

For FAST results...  
try the Classifieds!

**HELP  
WANTED**  
**Work at home** assemble products at home no experience necessary for more info rush \$5 and a self addressed stamped envelope to Hazel Lincoln 1015 S.W. 51<sup>st</sup> St. #6 Lincoln City, OR 97367  
**CNA needed** for in-home care, call for info 337-5343  
**Driver's Education Teacher**, must hold a valid Idaho teaching certificate w/driver's education endorsement. Application available at the District Office. Call 896-4111 x197 for more info.  
**In home care** for elderly lady near Given Hot Springs, Mon-Tues-Fri, from 1 pm to 6 pm 466-3196

**THANK  
YOU**  
We would like to thank all of our friends and relatives who gave us their love in so many ways; food, flowers, cards, memorial gifts, phone calls and prayers, during the illness and death of our loved one Warren D. Truesdell. Also, thanks to the Owyhee Rehab Center for the loving care he received while there. May God bless each and every one of you. Rena Truesdell, Don and Joan Truesdell, Bill and Lisa Truesdell and girls, Ken Truesdell, Dave and Mary Truesdell and family.  
I would like to send out a special thanks to the Homedale Ambulance for taking me to the hospital. I would also like to thank everyone for their kindness, food, visits and everything else. Thank you very much, Felma  
The family of Opal Nash wishes to thank all those who helped us celebrate the 93 wonderful years of her life: to Shelley Shenk for organizing our Viewing Dinner and to Penny Masar and Karen Hultz for helping her; to all those who brought food to the Family Dinner after the service and to our homes before the service; to all those who sent memorials to the Homedale Public Library and the Christian Church or their favorite charity; to all those who sent cards of comfort and their memories of Opal to us. We were truly touched by your acts of love and kindness. Opal loved Homedale, and no doubt she appreciated her "send off." Thank you one and all! The Vivian Downing Family; The Rodger Nash Family; The Rick Shanley Family; The Craig Nash Family.  
The Stutheits would like to thank Owyhee's finest (the police dept. and fire dept.) for their assistance with a chimney fire and hope we never have to see them under those circumstances again! Thanks  
Thank you to the Homedale Community for their support of our Ground Hogs Supper. Your generosity is greatly appreciated, Friends Community Church.

**JW Sharpening Service**  
**Small Engine Repair**  
208-337-3556  
Pickup Stations:  
Marsing: Harvey's Auto Center  
Wilder: Wilder Building Center

**J.W. SHARPENING**  
26531 BELLA VISTA DR.  
John Deere  
to Wilder  
Batt Corner Road  
Hwy 95  
337-3556 Homedale Snake River

**SERVICES**

**JJ Excavation and Hauling**, TOP SOIL, and gravel delivery, excavator and trucks for hire. Road building, dozer, water truck and road grader. Free estimate. 208-337-4822 or 573-5700.  
**Dump Truck & Back hoe** service, ditch cleaning & demolition. Call Steve at 465-5196 or 371-4285.  
**Fun piano lessons**, never too young; never too old. All ages and levels, home schoolers and learning disabilities. Welcome. Reasonable rates. 467-6244.  
**Lose 2-8 pounds every week!** Eat the foods you love! Have more energy! Guaranteed-Natural-Safe-Doctor recommended. Let us help you lose this weight. You will have a personal coach to help you achieve your weight loss goals. Call 1-888-218-8250  
**Sheep Shearing**, professional work, 1 or more, 1 man-shearing trailer on your barn floor, 208-459-4127 Leave message.  
**Let me do your cleaning**, you specify I comply, also will do ironing 337-5558  
**Bring your Valentine** to the SandBar River House, Valentine specials, taking reservations now, Marsing 896-4124  
**Income taxes prepared**, reasonable rates, please call 337-3795  
**Best price in the valley for on-site computer** cleaning and repair. Call Tom or Colette at 208-896-4676, Technical Computer Cleaning.  
**Day care** 2 to 3, full-time opening, wicap certified, all meals provided, lots of room to play, call Donna 337-6180  
**Wilson Tractor Service:** road repairs, landscape grading, weed mowing, small acreage specialty, quality custom concrete, and dependable service. Call Charlie Wilson 250-4937, 337-5990

**Rubber  
Stamps**  
*Made to order*  
**The  
Owyhee  
Avalanche**  
337-4681





# Snake River Mart

MARSING, IDAHO

HOURS: Mon. - Sat. 6:00 a.m. to 10:00 p.m. - Sunday 7:00 a.m. to 9:00 p.m.

Bone-In  
**Chicken Breasts**



**79¢** lb.

Family Pack Pork  
**Quarter Loin Chops**



**\$1.29** lb.

Large Head Cello  
**Lettuce**



**2 for \$1**

Large Choice  
**Oranges**



**\$8.99**  
Case Price

Blade Cut  
**Pork Chops**




**\$1.39** lb.

Center Cut  
**Pork Chops**



**\$1.69** lb.

Slicing  
**Tomatoes**



**79¢** lb.

Golden Ripe  
**Bananas**



**3 lbs. for \$1**

Pork Sirloin Roast **\$1.59** lb.  
Boneless Beef **\$1.89** lb.  
Chuck Roasts **\$1.89** lb.  
8 oz. Western Family Grated Parmesan **\$2.79** ea.

Market Pack Sliced Bacon **\$1.69** lb.  
6 oz. Western Family Gourmet Lunchmeat **2 for \$3**  
16 oz. John Morrell Bologna **\$1.29**

16 oz. Clamshell Strawberries **\$2.19**  
Red Globe Grapes **\$1.29** lb.  
12 oz. Clamshell Grape Tomatoes **\$1.19** ea.

2 lb. Bag Carrots **79¢**  
Green Beans **89¢** lb.  
In-The-Shell Mixed Nuts **\$1.29** lb.

Betty Crocker  
**Cake Mixes**



**89¢**  
18.25 oz. Asst'd.

12 oz. Asst'd. Betty Crocker RTS Frostings **\$1.39**

Western Family  
**Chocolate Chips**



**\$1.09**  
12 oz.

6 oz. Western Family Graham Crusts **99¢**

Western Family  
**Potato Chips**



**2 for \$3**  
12.25 oz.

18 oz. Nabisco Oreo Cookies **2 for \$6**

All Varieties  
**Pepsi Products**



**\$2.99**  
12 Pack Cans

13.5 oz. Tostitos Tortilla Chips **2 for \$5**

**Shasta Pop**



**99¢**  
3 Liter Bottles

12 oz. Western Family Frozen Orange Juice **89¢**

**Homestyle Bakes Dinners**



**2 for \$7**  
28 to 35 oz. Asst'd.

24 oz. Eddys Buttermilk Bread **2 for \$4**

Soft-N-Gentle  
**Bath Tissue**



**\$2.29**  
12 Roll Package

1 Roll Brawny Paper Towels **\$2.29**

Western Family  
**Peanut Butter**



**99¢**  
18 oz.

32 oz. Western Family Grape Jelly **99¢**

ONE COUPON PER VISIT - PER ITEM ONLY. THANK YOU!!

5001 **COUPON**

Western Family  
**Butter**

**2 for \$3**

1 lb. Quarters  
Limit 2 Expires 02/18/03

5002 **COUPON**

Western Family  
**Orange Juice**

**79¢**

12 oz. Frozen  
Limit 2 Expires 02/18/03

5003 **COUPON**

Betty Crocker  
**Cake Mixes**

**79¢**

Asst'd.  
Limit 2 Expires 02/18/03

5004 **COUPON**

Soft-N-Gentle  
**Bathroom Tissue**

**2 for \$4**

12 Roll Package  
Limit 1 Expires 02/18/03

WE RESERVE THE RIGHT TO LIMIT QUANTITIES AND CORRECT PRINTED ERRORS • PRICES EFFECTIVE 02/12/03 thru 02/18/03



# Public notices









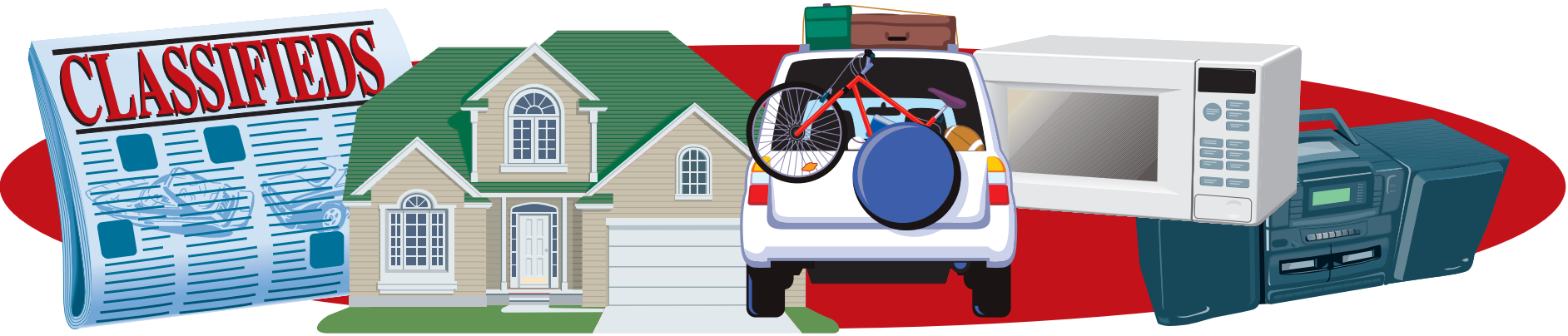


# Public notices



# Public notices





***The Owyhee Avalanche***  
*Owyhee County's best source for local news!!*



