



WEDNESDAY, NOVEMBER 27, 2002

Established 1865

# The Owyhee Avalanche

VOLUME 18, NUMBER 48

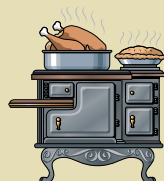
HOMEDALE, OWYHEE COUNTY, IDAHO

SEVENTY-FIVE CENTS



## FAA inspects Homedale airport

page 5



## How to cook a turkey

page 8

## Allied Signs open for business in Homedale

page 3



## Local fire departments receive BLM funds

Fire departments in Marsing, Grand View, Homedale and Bruneau will each receive a share of money being granted to small fire organizations through the Bureau of Land Management's Rural Fire Assistance program.

An outgrowth from the 2000 fire season, the RFA program is designed to assist rural fire departments that play a cooperative role in the protection of public lands. The money is to help qualifying departments with training and equipment costs, and fire prevention activities.

Of the Owyhee County departments, the Homedale Rural Fire Protection District received the most funding this year with \$7,397. The Grand View Fire Protection District will receive \$7,298; the Marsing Volunteer Rural Fire Department will receive \$6,752; and the Bruneau Rural Fire Department \$580.

"This is one of the most efficient and effective programs I've seen in my experience," Randy Eardley, spokesman for the BLM's Lower Snake River District

— to page 4



## Destruction

*The front window of Homedale Realty on Idaho Avenue has two holes in it from an unknown source.*

## Vandals continue destructive spree

Vandals continue to destroy property in Homedale as a rash of vandalism continues and has now exceeded over 30 cases since October. The vandals are mostly attacking parked vehicles, but recently a rash of broken windows has also occurred in the area.

Friday morning, Margie Isaguirre walked in to her business, Homedale Realty, to find two pieces of glass on the floor of the lobby. Someone had shot or threw something through the front window of the business. But that wasn't the end of it for Isaguirre, Wednesday morning she walked into the same scenario.

Police Chief Jeff Eidemiller said Thursday that he does not believe the holes in the real estate business window are from a rifle, but possibly from a pellet gun, or other projectile.

"We have had approximately 27 vehicle vandalisms, burglaries and business vandalisms since the beginning of October," Eidemiller said on Thursday. "The crimes are up considerably. We are working on every one of these cases but vandalism is probably one of the hardest crimes to prove. Recently the sheriff has offered his department's assistance but I can not go into any details about that at this time."

"It is terrible," Isaguirre said. "If someone had been in the office, they very easily could have been killed. If you look at the direction the second shot is going, if I had been at my desk it would have hit me. I am so shaken up. I haven't even been able to call to get it fixed yet."

Eidemiller said Friday he conducted a search of the realty business but did not find any evidence of a bullet. He said if his investigation showed a bullet was shot through the office window, the crime would be considered a felony. -CP

## Hearing scheduled for amendments to county's zoning ordinance

The Owyhee County Board of Commissioners will hold a public hearing on Dec. 9 at 2 p.m. in Murphy to gather public input on proposed amendments to the county zoning ordinance with will implement the county comprehensive plan.

The hearing will begin at 2 p.m. in the Annex on Basey Street in Murphy, but the Annex will be open at 1 p.m. with copies of the proposed ordinance and the comp plan available for review.

The proposed zoning ordinance amendment, which will be reviewed, will implement the comprehensive plan. It identifies the allowed uses in each of zoning districts by conditional use permit.

Planning and Zoning Coordinator Kay Kelly said

citizens are urged to review the proposed amendments to the zoning ordinance so that they will be on notice as to the proposals for uses allowed and permitted in the district in which their property lies, and can offer input at the scheduled hearing.

The county comp plan called for establishment of several different zoning districts throughout the unincorporated area of the county. Agricultural, commercial, industrial, multi-use and historical areas are zoned in the plan. The proposed ordinance will set the legal descriptions of the zoning districts and will specify the land uses, which are allowed in the districts. It will also set

— to page 4

## Open house planned for retiring assessor

An open house will be held at the courthouse in Murphy next month to honor retiring County Assessor Ernie Bahem.

The celebration will be held on Dec. 5 from 10 a.m. until 3 p.m. The public is invited to attend.



## Calling 911? You might need to send a fax

When an emergency happens and a call is made to 911 or 337-4222 for help, most people expect to get a voice on the other end of the line. In Owyhee County, that does not always mean you will reach a voice. Actually you often will reach a loud, screeching buzz from a fax machine, or a busy signal.

Sheriff Gary Aman has been working with the commissioners to have enough lines connected to the county dispatch center, but right now, the department is working without

the necessities to establish one line exclusively for 911 calls.

The federal government ordered phone companies to install a system to convert a phone line to 911, meaning, if a person dials 911, phone companies are required to transfer that call to an emergency response system.

Currently the sheriff's office has seven phone lines. Three of those lines are Homedale numbers for the Marsing/Homedale area, three lines are Melba numbers and one is an

investigation line.

Aman said last week that one of those lines from Homedale has to be used for computer modem hookup and for the office's fax machine. At least one Homedale area man found that to be true last week when he dialed the primary line from the Homedale area and reached a fax.

"Apparently we had a man who tried to reach our office last week and all he could get was a fax machine," Aman

said Friday. "He tried to call and tell us about a drug buy that he was witnessing.

"We don't know when a call comes in if it is a 911 call or an office business call, or exactly what it is. We need to be able to determine which ones are emergency calls and which are faxes or business calls. Right now we can't do that."

Owyhee County Commissioner Hal Tolmie said last week that the commissioners are working with the

— to page 4

To  
911:  
Help!!





Honored deputy

TRIAD members honored Owyhee County Sheriff's Office Deputy Dennis Peppley last week as employee of the year. Peppley was nominated by his peers and accepted a plaque and a gift certificate. Pictured are Sheriff Gary Aman, TRIAD President Bill Shaw and Peppley.

Homedale Fire Dept. plans orange sale

Volunteer firemen from—the—Homedale Fire Department will be selling oranges in its annual Christmas fundraiser. Fire fighter Jim Bittick said the event had been stopped for two years, but the department chose to bring it back again this year. Oranges will go on sale Dec. 9<sup>th</sup> and will continue until all are sold. To order, contact any fire department member.

Farmers appreciation luncheon to be held Tues.

The Owyhee Soil Conservation District plans to hold the Farmers Appreciation luncheon on Dec. 3 at the American Legion Hall in Homedale from 9:30 a.m. until 2 p.m. The day will begin with an Ag update including when pesticide applications go bad and what to do if you have a misapplication. From 11-12 p.m., pesticide and groundwater in Owyhee County will be the topic followed by lunch provided by the Owyhee Soil Conservation District at noon. Noxious weeds will be discussed from 1-2 p.m. The district would like to invite anyone who is involved in or interested in agriculture. The program is offering an opportunity to receive three credits towards the renewal of pesticide applicators license, one credit soil and water credit and two pest management credits.

Correction

Last week, it was incorrectly reported that Marsing Middle School had conducted a magazine drive. It was Homedale Middle School and the students raised over \$6,000 that will go towards athletic and special event needs. We apologize for the error.



Water patrol

The Owyhee County Sheriff's office recently purchased a 2000 Bombardier LRV Seadoo Jet Ski to add to its water rescue equipment. Sheriff Gary Aman said last week that the machine was purchased with funds received from the state and county waterway tax. He said the machine would be equipped with ropes, life vests and initial rescue equipment. The machine can safely carry four people.

Uranga named to NNU Hall of Fame

Former Homedale High School basketball standout, Julie Uranga, will be inducted into Northwest Nazarene University's Hall of Fame Dec. 7. Uranga graduated from Homedale in 1981 and was a member of the Crusaders' basketball team from 1982-86. She totaled 388 assists and had



Julie Uranga

No. 5 all-time for single-season points.

a .758 free t h r o w percentage for her career. In her senior season, Uranga scored 509 points, which earned her the

Keep informed  
Read  
The Avalanche

Savings  
EXTRAVAGANZA!

NEW CARS AND TRUCKS  
AT  
DEALER INVOICE!  
USED CARS AND TRUCKS  
AT  
BLUEBOOK  
WHOLESALE!

Thinking of buying a new or used vehicle?  
Don't miss this SALE!  
It could cost you thousands!  
Lithia Chevrolet of Caldwell is conducting a car and truck extravaganza –

THIS WEEKEND ONLY!

Every used vehicle – cars, trucks, S.U.V.s ... imports and domestics, in our massive inventory will be offered for immediate sale at wholesale book price. And that's not all ... every new Chevy car, truck or SUV is priced at dealer invoice!

No down payment,  
no interest and no  
payments for 90 days!

All used vehicles are under warranty.

Disc: All vehicles plus tax, title, license and \$149 dealer doc fee. Based on most recent Kelly BlueBook wholesale prices. Subject to prior sale.



CHEVROLET  
WE'LL BE THERE

TOLL FREE  
1-800-459-4621

4121 E. CLEVELAND BLVD. • 459-4621

HOURS: Mon-Fri 9:00-6 • Sat 9-7 • NOW OPEN 11-5 SUNDAY [www.Lithia.com](http://www.Lithia.com)



Clint Wilson



J.T. Pelagio



Doug Alvaro



Travis Shoemaker



Gail Neth



Tim Bonnell



Steve Shoemaker  
General Sales Mgr.



Denny Hay



Jeff Rodwell



Dan Kauffman  
General Manager



# Allied Signs open for business in Homedale

*Big city experience, services a good fit in small town*

Mark Jolley has been all over the country, but Homedale is where the commercial sign maker has decided to base his latest business endeavor.

Allied Signs, located at 31 West Idaho Avenue, opened for business in September and brings with it, Jolley's 20-plus years in the sign making industry.

From Atlantic City, to Las Vegas and several points in between, Jolley has produced a myriad of sign designs. Casinos mostly, he says; and who would know how to make a sign better than a guy who has designed them for Circus, Circus?

"I worked for a big company called YESCO. They're a western regional sign company. I worked in Las Vegas and Reno. We actually started a sign company for them in Sacramento, Calif."

The allure of big lights and big cities eventually wore thin

for Jolley.

"I got to where I was burned out," he says.

Just prior to opening Allied, Jolley had been working out of Caldwell. When the opportunity came to partner with Homedale-based JS Construction, Jolley says it was time to move operations.

"I live over by Adrian (Ore.), he says. "I thought there was a pretty good need here. I just wanted to get a little closer, so I didn't have to commute all the time."

Jolley's wife, Debra, is a secretary for JS Construction. Allied is a subcorporation of the company. When JS purchased the building on Idaho Ave., it seemed like an ideal time to start the business, he says.

Jolley is a one-man show. He is sales, design and production. Debra helps him with the administrative end of the business.

"I design and manufacture all kinds of signage, except neon," Jolley says. "We do windows, banners, magnetic signs, illuminated electrical signage. We do a lot of



**New in town**  
*Mark Jolley, owner of Allied Signs in Homedale, opened for business in September. Allied provides area business with an assortment of sign making options. Jolley hopes to add a United Parcel Service shipping station to Allied services beginning this week.*

construction site boards."

In addition to sign making, Allied is in the process of becoming a United Parcel Service shipping station. Those plans have been nearly finalized and await approval by UPS.

He's an expert in many forms of media, but Jolley says that technology and Allied's customer base dictate mostly vinyl materials.

"Anymore, the industry has been computerized and it pretty much has gone to vinyl," he says.

"Years ago, I used to do gold leaf and hand-painted signs," Jolley says. "There's not much call for that anymore. They're real expensive."

His designs range from simple to intricate; and so does the artistic flair. Window painting is one media form, he says, is effective, but also caters to his artistic interests.

"I was always an artist, a creative kind of guy," he says. "I dabble on the side, doing artistic signs and things like that. That's where my

brushwork came in. I do windows just for a kind of relaxation.

"They do pretty good," Jolley says. "They're quick, simple and cheap. We do stuff around Christmas, Thanksgiving, the holidays. We also do special advertisements. Car dealerships use them a lot. They're called window splashes. They don't last very long. Thirty days is about the limit, but they get a lot of attention."

Jolley says the market isn't exactly untapped, but for the services that Allied provides to the surrounding area, the company is somewhat unique.

"The thing we found (was) the nearest sign company from here is Caldwell, or going to Nyssa, Ore. And they're pretty limited in what they can do."

"We get a lot of work down here," he says. "When I was working out of Caldwell, a lot of customers would come from this area — Marsing, Homedale — all up and down the Snake River corridor."

"I researched it and I found that there's a possibility that a person could make a living from this end," Jolley says. "We've got area-wide phone service now; it doesn't matter where you are located. I get jobs out of Boise. I go all the way from McCall, to Hailey, to Jordan Valley and Baker City. My area is pretty big and it would be the same area if I was in Boise." -CM

*For FAST results... try the Classifieds!*



## OUR MARK IN CANYON COUNTY.



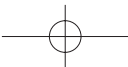
At Farmers & Merchants State Bank, our roots run deep. All the way back to 1967, as a matter of fact. Now we're growing with Canyon County, branching out with a new building for our Caldwell location and a new branch in South Nampa. Stop by any of our three convenient locations and see how our commitment to the community, focus on small businesses, and down-to-earth style is changing the banking landscape.

|   |   |   |                                     |
|---|---|---|-------------------------------------|
|  MEMBER FDIC | Nampa<br>112 2nd Street, S.<br>465-6333 | South Nampa<br>1513 12th Avenue Rd.<br>442-7800 | Caldwell<br>1110 Blaine<br>454-8800 |
|---|---|---|-------------------------------------|



FARMERS & MERC

WWW.FMSB.COM | YOU'RE IN G





# From page 1

## ✓ BLM

said. "This is the second year in which we've given out about \$230,000 to departments in the district alone. We work closely with those departments who can and want to participate, assist them with the paperwork, and transfer the money to them, all in a matter of months.

"It's a relatively quick, very clean process, and we all benefit from it," he added.

In order to participate, a department must have a Cooperative Fire Protection Agreement in place with either BLM or the Idaho Department of Lands, serve a community with a population of fewer than 10,000 people, and be able to share 10 percent of the cost either through local funds or in-kind services. Each department can apply for and receive up to \$20,000 annually.

Thirty-four departments across the BLM's Lower Snake River District participated in the program this year and received funding assistance ranging from \$200 for the King Hill Rural Fire Protection District to \$17,530 for the Oasis Volunteer Fire Department outside of Mountain Home.

## ✓ Zoning

which of those will be permitted under conditional use permit and any which will be prohibited. The proposed ordinance will also set the parameters for siting confined animal feeding operations.

Following the public hearing, the Board of County Commissioners will consider any written comments received by 5 p.m. Dec. 16. Written comments may be submitted before or after the public hearing and should be sent to Kelly at P.O. Box 128, Murphy, Idaho 83650.

Maps of the designated zones and their legal descriptions which will be set in the zoning ordinance are available for review at the courthouse Annex in Murphy, the Three Creek School, Pleasant Valley School, the libraries in Grand View, Bruneau, Homedale and Marsing and at city hall in Homedale and Marsing.

The zoning amendments will also be available for public review at the same locations during their normal business hours beginning Nov. 22. Copies of the proposed zoning ordinance will be available at the cost of reproduction. Kelly can be reached at 495-2051.

## ✓ 911

sheriff to add more lines, but apparently the cost is an issue.

"We have been discussing the phone line situation," Tolmie said last week. "The people put the referendum to see if they wanted 911 and they did. I said ok, we have to have county addressing before we get 911 and we haven't got county addressing complete yet.

"I am not against 911, but the commissioners have never voted to install 911 in the county," Tolmie continued.

"We had county addressing going years ago then the sheriff and assessor said it was not done right. So we said we would hire this company, (Geo Com.) to initiate this process. I said since Gary and the assessor were the ones who really jumped on the other by saying it was not right, so I said why don't they take charge of the addressing and they agreed. We are discussing things on 911 right now so I am not going to comment on anything."

"Do we need enhanced 911 or do we need the basic 911 to operate?" Tolmie continued. "I don't know anything about what is happening with the phone companies. If you dial 911, you get another voice on the other end."

According to the minutes from the Nov. 12 commissioners meeting, the board reviewed a T-1 Internet Service presented by Computer Arts. Emil Drzayich Jr. and Bill Camron represented the company to the commissioners.

"Computer Arts reported that the T-1 would allow the county system to be analyzed by computers in the Computer Arts Office without making a trip to Murphy and thus cut-down on money spent in travel to make adjustments," the minutes read. "Phil Pickett represented the telephone equipment company that installed the system telephones. He reported that the system would be capable of utilizing the T-1 line. He reported that nine lines would be needed to operate the E-911 system leaving 14 lines available to the other users within the courthouse.

"The Board directed that Computer Arts present a written proposal to the Elected Officials and the Elected Officials present a recommendation to the Board on the pros and cons of the proposed implementation; the need for the T-1 service; and alternatives to the T-1 service."

"T-1 is for enhanced 911," Tolmie claimed. "Now I found out that if you put in one T-1 line, you might have to have two. The price just keeps going up.

"I told them as a commissioner I am not going to piece-meal this thing together until I know the cost so we can budget for it. I can't spend the taxpayers' money just spending \$20,000 here, \$30,000 here, \$80,000 here, \$140,000 there. I said I want to know what the cost is going to be to install 911.

"They always said the dollar charge we have on 911 from the phone companies would pay for 911. It is not coming close. We have been spending more then that already and we don't even have 911 installed yet. When it is all over we will have 911. I don't know that it

will be enhanced 911.

"We've already approved one T-1 line coming in, I think. If not we are in the process of it. Then when they get all that done, they decide they need two lines. I don't know if it is for 911 or just for more lines going into Gary's office."

When Tolmie was asked what was discussed about the T-1 lines by Aman on Monday, he declined to comment stating discussions were still pending.

Aman said there was a "severe" communication problem with the commissioners and a meeting was planned.

"I have to use one of my three Homedale lines also for a computer modem and a fax line," Aman said. "My three Homedale lines rotate. If the first two are busy and you get a fax coming in, you will get a busy signal. I have been trying to get another Homedale line coming in here to dedicate it strictly for the faxes and modems.

"We do not have 911 in the office. The phone company has a system that says 'you call 911 it will go to a switcher and come in as 337-4222.' That is all it does. It is not even true basic 911. It is supposed to be that when you call 911 you will have a voice to it. For basic 911 you still have dedicated phone lines. We do not have dedicated 911 lines.

"T-1 is a phone line system that has 23 connections going on the one line and we do not have T-1 out here. We want T-1. It is not T-1 internet service.

It is a phone line system where you can get more business on one line. The computer people met with the commissioners and said they would like to have a T-1 line out here for high speed internet service and 911. I said that can not happen. Once you have nine lines tied up to E911, you only have 14 lines for the entire rest of the courthouse. It won't work.

"I said at the last meeting, that E911 is going to take nine lines out of a T-1 system. Bring in a T-1 to the sheriff's office and that will give me nine lines for E911, 14 for other business and that gives me room to grow. Then put in a T-1 line into the rest of the courthouse and that gives them 23 lines.

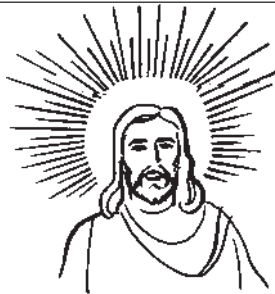
"I don't think they can put in one T-1 line in and expect it to work in the future. It might work now, six months from now, but it won't work five years from now. Plan for the future."

Aman said the cost of adding an additional T-1 line would not cost twice as much as adding one T-1 line. He said he would meet with the commissioners to give them the figures and the facts of what is going on.

Aman said for now, people calling 911 from the Homedale/Marsing area may encounter a busy signal, or the sounds of a fax line. -CP

For FAST results... try the  
*Classifieds!*

## Mt. Calvary Lutheran Church



Thanksgiving Day Service  
10:00 am

**MIDG-ETT**  
Folding Tables

VERSATILE / ALL-PURPOSE

RV'S • Art • Crafts • Camping • Sewing • Scrapbooking  
Ratio • Home • Office • BBQ • Schools

America's Largest Selection  
of small Folding Tables!

207 West Hwy 95 Parma

CHRISTMAS  
SPECIAL!

MIDG-ETT FOLDING  
STOOL!

\$19.99

15  
Table  
Sizes  
Available

(208) 722-5195



# FAA inspects Homedale airport

Officials from the Federal Aviation Administration traveled to Homedale last week to inspect the local airport for federal funding. William Watson, P.E. Oregon/Idaho Section Supervisor and Trang D. Tran, Civil Engineer, Oregon/Idaho Section Seattle Airports District Office toured the airport facility and determined it did not meet FAA standards for funding.

Mayor Harold Puri met with Watson and Tran who toured the facility taking measurements and later held a meeting with the mayor at city hall.

“We have given you (the City of Homedale) a grant using your fiscal year 2001 of \$13,000,” Watson said. “You also have some fiscal year 2002 money which we have not put under grant of \$13,000. In 2003, although congress has not appropriated the funds for the bill, you are on for \$16,000. The first \$13,000 is under grant for seal coat and the other \$29,000 you have not decided what to do.”

Homedale Airport currently does not have an ALP plan for its airport or a site evaluation complete. Watson told Puri the money from the grants could be used for the evaluation, but it may be a waste of time.

“We are not saying your airport is a bad airport, it just does not meet up with FAA standards,” Watson explained. “Probably 75 to 80 percent of the airports in the United States do not meet with FAA standards. There are small airports and we try to put money into the larger airports.

The money we have for you, you can use to maintain what you have now, but not do drastic improvements to it.”

Watson said the standard runway for small aircraft landing sites, such as Homedale, is a minimum runway width of 60 feet, right now Homedale’s runway width is 50 feet. FAA requires a runway safety area of 240 feet at each end of the runway. Homedale is short by 120 feet.

“We have a runway object free area that is required,” Watson continued. “This is 250 feet and 125 feet on each side. We want trees and fence post removed. You have some fencing and bushes along the river that would have to be trimmed. Before we would get started with it we would have to have a site selection study to make sure that site was good or there was a better one.”

Watson said the city might not like what they find in a site selection study. He said he could tell them that the current airport would not meet FAA standards. He said if the city was willing to go through the process of a site selection study, then the FAA could assist with building a new, larger, airport, but the site probably would not be where the current airport is located.

“By all means the city should continue if they chose to go through the process, but they need to be aware of the limitations FAA will cover,” Watson said. “FAA does not cover hangars. The city would have to work something out with the lease holders on moving or paying for the

hangars.”

Puri said the council would address the issue again in the

future, but moving the airport was something that is considered. He said the project

could take up to 10 years to complete if the council chose the option. -CP



## FAA unapproved

The runway at the Homedale Airport is not long enough to be approved by FAA standards for grant money.

## Three Creek news

by Lola Blossom

Three Creek school now has three new pupils. They are Roy Araiza and Roxanne Araiza and Tania Mireles. They come from Devil Creek Ranch.

A Harvest Ball was held Oct. 31<sup>st</sup> 2002 at the school and a good time was had by all.

Miss Lori Harrison, teacher wen’t to the Elko bull sale on Nov. 1<sup>st</sup> and sold her bulls.

Carla Liesen took her children, Nathan and Carol Ann to the school program, dinner and concert Nov. 9, 2002 at Jarbidge, Nevada. They got to see Todd Green, a talented musician who performs nationally. He has musical instruments from around the world. Carla, Nathan and Carol Ann also enjoyed a long vacation to San Marcus, Ca. to visit their grandmother and great aunts. While there Nathan got to ride on planes, they wen’t to the beach and many swap meets and to Universal Studios.. They visited Rene Duykaerta at Mamoth Lakes pack station and Nathan got to ride with the pack string.

On November 5 2002 I served my last day on the Three Creek election Board. I didn’t make it to 50 years like Mrs Brandau but I never missed working every election from Nov. 1959 until Nov. 2002. We had good pot lucks and lots of good visiting. The most trying time was when a flock of starlings flew in and Maxine Clark and I had a tough time getting them out.

Another time was tough when two couples from Murphy’s Hot Springs who wern’t on speaking terms came to vote and we had to wait until Tim Nettleton flew in with our election supplies which had been sen’t by mistake to Riddle. Idaho. I worked with a lot of nice people through the years. I started out with Carl Patrick, Ray Blick, Noy Brackett and Sue Clark. I ended up with Carla Liesen, Paula Brackett and Kim Brackett.

I wan’t to thank all who helped me through the years. They will probably be glad to see the last of me.

## GREAT BIG SALE MINI PRICES!

2002 Grand Caravan Sport

3 to choose from. Available in silver & white

\$15,995



4 door, 3.3 liter, AT, 2 AC (front & rear), tilt, cruise, power windows & locks.

2002 Chrysler Town & Country LX

Available in almond

\$15,995

4 door, 3.3 liter, AT, 2 AC (front & rear), tilt, cruise, power windows & locks.



Stock# 100468A

### Cars & Vans

2000 Dodge Stratus ES ..... \$9,995

4dr, AT, AC, TC, PWL, taupe, #100455B

2002 Dodge Intrepid SE..... \$13,995

4dr, AT, CD, AC, TC, PWL, sapphire, #100470A

2002 Chrysler Concorde Lxi ..... \$16,495

4dr, AT, LTHR, CD, AC, TC, PWL, white, #100471A

2002 Dodge Caravan Sport..... \$13,995

4dr, AT, AC, TC, PWL, white, #100462A

2002 Dodge Gr Caravan Sport..... \$17,995

2 avail., Low miles (<9k), 4dr, AT, 2AC, TC, PWL, aqua or silver

### Trucks & SUV'S

2000 Dodge Ram 3500 Quad Cab ..... \$25,495

Dually, 6-spd, diesel, AC, TC, PWL, green, #23361A

2000 Toyota Tacoma Club Cab SR5...\$15,995

4x4, 5 spd, CD, AC, TC, iris, #100355C

2002 Jeep Gr. Cherokee Laredo ..... \$19,995

4x4, AT, CD, AC, TC, PWL, onyx, #100474A

2002 Dodge Durango SLT 4x4 ..... \$24,995

AT, 2AC, CD, TC, PWL, silver, #100447A

2000 Toyota 4 Runner Limited ..... \$23,495

4x4, MR, AT, AC, CD, TC, PWL, Lthr, silver, #23035A



"Feel good about a car dealer again"

2701 E. CLEVELAND BLVD., CALDWELL

459-7405

www.curtandhal.com

HOURS: Mon.-Fri. 8am-8pm Sat. 9am-5pm

Prices do not include tax, title or dealer doc fees. Units subject to prior sale. Photos for illustration purposes only. Financing available OAC. Offers expire 11/30/02



# Birthday

## Bernice Runger celebrates 90<sup>th</sup> birthday

An open house will be held honoring Bernice Runger, celebrating her 90<sup>th</sup> birthday. The open house will be held Saturday, Nov. 30 from 1 p.m. until 4 p.m. at the Nampa Valley Grange Hall number 131 in Nampa.



Mrs. Runger was born in Williams, Minnesota, and married Charles Runger in 1935. They moved to Tacoma Washington, during WWII, where she worked at Boeing as a riveter during the war.

In 1944, they moved to Homedale, where they owned and operated Chuck's Grocery until retiring in 1971. She has resided in Nampa with her daughter and son-in-law since 1991, when her husband passed away.

She has two children, five grandchildren and two great-grandchildren. It is requested that there be no gifts, but cards are welcomed.

# Obituary

## Harvey Blossom

Harvey Blossom, 84, passed away October 26, 2002, at Magic Valley Regional Medical Center in Twin Falls following cancer surgery.

He was born September 22, 1918 at the 25 Ranch near Battle Mountain, Nevada, and the son of John and Jenny (Nipp) Blossom.

He worked on ranches in Nevada until 1953 when he moved to Three Creek, Idaho and started ranching on his own.

He married Lola Colyer on December 29, 1945 in Elko, Nevada.

Harvey wasn't a fancy cowboy, but the tender loving care he gave his cows and calves wasn't to be beat.

Harvey had a great ear for music and could play guitar, accordion, violin, piano and harmonica.

He was inducted into the Southern Livestock hall of fame in 1994 and received a lifetime honorary membership in the 71 Livestock Association in 1996.

Harvey is survived by his wife, Lola, two brothers, Wayne (Rosie) Blossom of Owyhee, Nevada and Erman (Althea) Blossom of Sitcliffe, Nevada. Three sisters, Gladys Williams and Dorine Munroe of Battle Mountain, Nevada and Lorene Hernandez of San Jose, California and numerous nieces and nephews.

His parents, two brothers, Rene Blossom and Clancy Blossom and on sister, Vernie Wasson preceded him in death.

Funeral services were held October 29, 2002 at Parkes Magic Valley Funeral Home in Twin Falls. Interment was in the Twin Falls cemetery.

Casket bearers were Harvey's nephews Leonard Blossom, Melvin Blossom, Alvin Blossom, Luther Blossom, Rudy Blossom and Tex Blossom.

A large crowd gathered for refreshments and visiting after the services at the home of Bob and Debbie Emery at Cedar Draw.

# Lang selected to H-Bowl Queen's Court

Homedale High School senior, Nikita Lang has been selected to the Humanitarian Bowl's inaugural Queen Court.

Lange is one of six finalists that were selected from around the state as ambassadors for the nationally televised postseason college football game Dec. 31. Her duties include mandatory appearances and volunteer

work.

Finalists are eligible for college scholarships. The Queen will be announced Dec. 28. Lange will donate 40 hours of her time at the Lifeline Pregnancy Center in Nampa. "We each pick a non-profit organization we wanted to serve," she says.

Lange is planning to attend the College of Southern Idaho

in Twin Falls next Fall. She'll study nursing and will try out for the school's dance team this Spring.



Homedale Senior  
Nikita Lange

# Farm Service Agency announces election

Election ballots have been mailed to all eligible voters in LAA1. Ballots must be returned or postmarked by Dec. 2, 2002. The ballot includes four qualified nominees from the Marsing area including Dan Church, Morris Giedd, Golden Millet and Rick Smith.

Church is a resident in Marsing and has been a sugar beet grower for 12 years. He is a director on the board for the Nyssa Nampa Beet Growers Association.

Giedd has been farming for 20 years. His primary crops are sugar beets, wheat and hay. He is on the Marsing Labor Association Board and serves as a commissioner for the Gem Highway District.

Millet has been working with seed and orchard growers in Idaho, Oregon, Washington and California to provide honeybee pollination services for 22 years. He is the commissioner for the Idaho Honey Industry Advertising Commission.

Smith has worked in the Marsing area for three years and has been farming in Idaho for over 30 years. He produces corn, hay, pasture and cattle.

The FSA Committee is charged with administering the USDA programs and is routinely called upon to set yields for the loan deficiency payments and disaster applications, decide on cost/share practices and determine eligibility of applicants.

All producers or their

spouses who live and farm in the Homedale and Marsing area are eligible to vote in this election. If you think you are eligible to vote and did not receive a ballot, contact the Owyhee County FSA Office at 896-4384.



As we expand our service area, True Blue remains committed to delivering extraordinary service by forming a partnership with independent brokers.

We are pleased to introduce the Blue Cross of Idaho independent brokers who are certified to sell True Blue:

|                    |                  |                 |
|--------------------|------------------|-----------------|
| Robert Anderson    | Anita Draper     | Chuck Megee     |
| Darald Bean        | Jonette Flores   | Verlynn Nobbs   |
| David Beck         | Steve Fredriksen | Richard Ralston |
| Tamara Blagburn    | Dave Gidley      | Glen Richter    |
| Russ Bonner        | Curtis Goodnoe   | Gene Robinson   |
| Jess Brauner       | Gene Gray        | Wayne Russell   |
| Jay Browne         | A. Ralph Gurney  | Pat Rutledge    |
| Christine Burgener | Jan Hall         | Lori Shandro    |
| Leonard Chow       | Curtis Hansen    | Mark Skelton    |
| Jody Clements      | Sue Hartman      | Allard Smith    |
| Kathy Clements     | Ferna Hicks      | Steve Smith     |
| Stanley Clements   | Nancy Higgins    | Bradley Solberg |
| Todd Clements      | Perry Jenkins    | Amanda Stocker  |
| Walter Clements    | Rich Kalbus      | Lisa Thompson   |
| Leon Cloud         | Tony Klein       | Tom Tingey      |
| Gary Collins       | Steve Marsh      | David Tweedy    |
| Jeraldine Corrie   | Don Mathern      | Chuck Vaughn    |
| Michael Davies     | Melinda McDaniel | Randy Vaughan   |
| Martin Doherty     | Rob McEwan       | Charles Winfrey |
| Chris Doyle        |                  |                 |

Call your broker today!

**True Blue**  
You'll Feel Good With True Blue!

**Blue Cross of Idaho**  
An Independent Licensee of the Blue Cross and Blue Shield Association

395-8200 or 1-888-494-2583

TDD/TTY for the hearing impaired: 1-800-377-1363

Now Serving: Ada, Boise, Canyon, Gem, Owyhee, Payette and Washington Counties

Beneficiaries must maintain Part A and B coverage by continuing to pay the Part B premiums while in True Blue. True Blue is a Medicare contracted HMO open to all Medicare Beneficiaries. You must receive all routine care from plan providers. Please contact True Blue for details.

10/02 MK0325



Dick Whitted  
Licensed Mortician  
Homedale Chapel

Flahiff Funeral Chapels have been serving the area since 1952 with professionalism and dignity.

We will tailor our services to your specific needs and requests.  
Traditional and Alternative services available.  
Please feel free to call us or stop in.

**Canyon County's Only Crematory**

**Flahiff**  
*Funeral Chapels, Inc.*  
**& Crematory**

**Homedale**  
**337-3252**

**Caldwell**  
**459-0833**

## Feds award West Canyon Mentoring Project

The United States Department of Juvenile Justice and Delinquency Prevention (OJJDP) has awarded \$220,000 to the West Canyon Mentoring Project, a coalition of Caldwell, Homedale, Nampa and Parma School Districts.

The coalition was one of 65 selected programs from 865 applicants nationwide. The three-year grant will provide funding to expand the adult-youth mentoring program in those elementary and middle schools that qualify.

“It was a hard grant to get,” says Sharon Frost, a teacher at Homedale Middle School and one of the four people from the four districts that navigated the application process last Spring.

“We worked on it for good month,” She says.

The program is designed to improve academic performance, reduce school dropout rates and prevent delinquent behavior.

Mentors must be 18 years old, pass a background check and be willing to spend up to one hour per week with a protégÉ at school during school hours.

The activities are varied and include working on school assignments, sharing a hobby or interest, or learning a new skill.

Students from grades 3-8 are referred to the program by school staff or parents.

For more information, call the West Canyon Mentoring Office at 461-4098.

### LOSE 2-8 POUNDS EVERY WEEK!

Eat The Foods You Love! - Have More Energy!

Guaranteed - Natural - Safe - Doctor Recommended

LET US HELP YOU LOSE THIS WEIGHT!!

You will have a personal coach to help you achieve your weight loss goals

Call 1-888-218-8250

## Forgery suspect pleads guilty

Warren Kenneth Maynard, 39 of Oreana, pled guilty last week to forgery charges in an Owyhee County courtroom.

Maynard was arrested October 28 and charged with forgery in the theft of checks from his former employer. He had been connected with checks written from the employer’s account in excess of \$1,000.

A spokesman from the courthouse said Maynard had been released on bond but would be sentenced on January 10.



Warren Kenneth Maynard

### BLM to Discuss Desired Future Conditions

The public is invited to three BLM public meetings. *Draft Desired Future Conditions* for the Resource Management Plans addressing the *Bruneau* Planning Area and the Snake River Birds of Prey National Conservation Area will be reviewed, with an opportunity for public input.

*Desired Future Conditions* portray the resource, social, and economic conditions that would be established over the next 20+ years if management goals are achieved. They will be used to develop the management alternatives that will be analyzed in the Environmental Impact Statements for the Resource Management Plans.

#### Dates, Times and Locations:

- December 9 – Monday, 6:30–9:30 PM, Rimrock Senior Citizens Center, 525 Main St., Grandview, ID
- December 11 – Wednesday, 6:30-9:30 PM, Holiday Inn-Boise Airport, Vista Exit off I-84, Boise, ID
- December 16 – Monday, 6:30-9:30 PM, Teed Elementary School, 441 Porter Rd., Kuna, ID Focusing on Snake River Birds of Prey National Conservation Area

Call Mike O'Donnell at 208-384-3315 for more information



Part of our highly trained Surgical team

## We care...about your recovery.

When you choose West Valley Medical Center for your surgical procedure, you’re choosing a team of skilled professionals dedicated to your individual needs. You are the focus of our attention, specialized training, and dedication to your comfort and well-being. We’ll be with you from admission to the successful completion of your operation. After all, we’re not simply one of the best surgical teams in the Treasure Valley; we’re friends and neighbors who want you to be well again.



We care about you. WEST VALLEY MEDICAL CENTER



# How to cook a turkey

### How to cook a turkey, from the mind of a child

Cooking a turkey must look pretty easy to an eight-year old child as he is called to the dinner table Thanksgiving afternoon and all the goodies are heaped onto his plate for him.

So we at *The Owyhee Avalanche* decided to ask 19 third grade children from Marsing Elementary School to tell our readers exactly how they think a Thanksgiving turkey is prepared.

Students from Mr. John Barenberg’s class took a few moments out of their school lessons to inform our readers of how they would prepare Thanks Giving turkey for dinner during tomorrow’s holiday.

None of the grammar, spelling or content have been changed in any of the following recipes to preserve the thoughts of a child.

**Andrea Rodriquez**  
**Ingredients;**  
10-15 lb turkey  
1/2 c butter (melt)  
5 garlic cloves minced  
3 tbs. salt  
1 tbs. dried basil crushed  
1 tbs. thum crushed  
1 tbs. lemon pepper or pepper seasoning

**Derctions;**  
In small bowl combine basil salt, thyme and lemon pepper set aside. Clean turkey well pat dry inside and outside next brush butter and rub garlic over turkey then rub seasoning spices all over turkey outside and inside place turkey in a baking dish breast side up covered or uncovered bake of 3-3 1/2 hr at 325 degrees.

**Heather Shriver**  
First you take the bag off then you take some baking oil on the trkey. Then you put the stuffing and seasoning salt then put it in the pan then cook it for 1001 seconds.

**Deidrie Briggs**  
**Ingredients:**  
1. Turkey, one foot long/11 inches tall  
2. Pan. Two feet and seven inches long/one foot two inches wide.  
3. Spices, seasning salt.  
4. Turkey stuffing  
5. Lettuce.

**Directions:**  
1. First cut the turkey open and get the gunk out. Next put the stuffing in.  
2. Then cook the turkey in the oven for an hour. Make the turkey be 52 degrees.  
3. When the turkey is done put the turkey on the pan then stick the lettuce underneath it. Put the spices on top of the turkey. Then goble-up!!!!

**Dafni Clausen**  
**Ingredients;**  
1 pan  
1 turkey  
water seasoning salt

**Directims;**  
1. pan.  
2. Put the turkey in pan.  
3. Pour the water over it.  
4. Put three shakes of seasoning salt.  
5. Put in oven.  
6. Cook for 5 hours.  
7. Temperature 106 degrees.

**Tanner Price**  
**Ingriedients;**  
Turkey  
stuffing  
oil  
bag  
pan  
sage  
salt seasoning

**Derections**  
Kill turkey  
put on oil  
take out of freezer  
put on pan  
pat seasoning on  
pat stuffing in  
put in oven  
put time for 50 min.  
put at 300 degries  
take out of oven  
then eat it.

**Jeanette Corrales**  
**Ingredients;**  
1. a turkey  
2. stuffing  
3. a pan  
4. a bag  
5. seasonings salt.

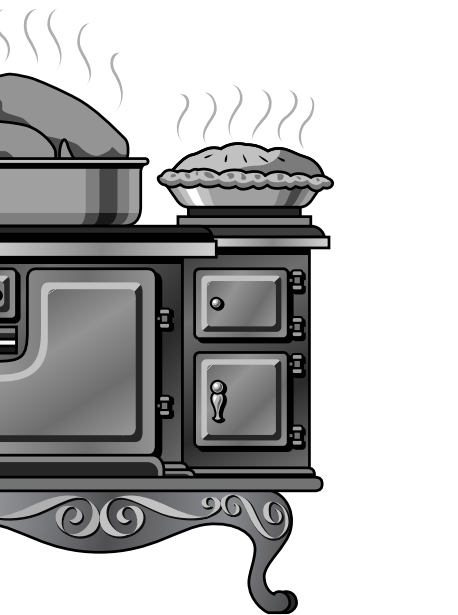
**Directions;**  
1. take the turkey out of the freezer.  
2. put the seasonings salt on it.  
3. and put the stuffing in it.  
4. next put the turkey in the bag.  
5. put the bag in to the pan.  
6. stick the pan in the oven.  
7. and bake the turkey for  
8. 3 1/2 hours at 350 degrees take it out.  
9. then let it cool for a little while.  
10. then have a feast.

**Shannon Malmberg**  
**Ingredients;**  
1. butter  
2. one turkey  
3. 1/2 salt  
4. 1/2 pepper  
5. grlik  
6. warter

**Steps;**  
1. you need a pan.  
2. then you put a turkey in the pan.  
3. then you put butter on the turkey.  
4. then you put 1/2 teaspoon of salt.  
5. then you put 1/2 teaspoon of pepper.  
6. then you put warter on the turkey.  
7. next you put the garlic around the turkey.  
8. last you put the turkey in the oven for an half an hour. Cook it on 90 degrees.

**Ismael Carrillo**  
**Ingredients:**  
Stuffing, 2 lb.  
Turkey, 20 lb.  
Salt, 2 spoons  
Corn, 4 spoons

**Directions:**  
First you buy a turkey then you put it in a pan then you put the stuffing in it. Then you put corn around it. Then you salt it. Then you heat the oven to 80 degrees for 4 seconds.



**Chelsea L. Thomure**  
**Ingredients;**  
2 lb turkey  
2 cups stuffing  
2 cups lettuce  
2 1/2 cups onions, round pan,  
2 cups seasoning, 3/4 cup salt

**Directions;**  
First get out the turkey from the freezer. Then let it thaw out in the sink with hot water for two hours. Then check it to make sure that it isn’t frsen. Then take it a put it in the oven. The temperature that it should be at is 30 degrees for two or three hours. Then take it out of the oven. Then put the stuffing in the turkey and lettuce and onions and seasoning and salt and have a feast.

**Veronica Sevy**  
Firt you cook it for 50 minutes at 60 degrees.  
Then you put salt and pepper then on it. Then you chop it up before you chop it up you put the sluffims into then you chop.

**Destinie Gardner**  
**Ingredients;**  
Turkey  
salt  
pepper  
butter  
pan

**Directions;**  
Cook at 90 degrees for one hour  
put turkey on pan  
put salt and pepper on turkey  
put in oven  
when done get out of oven. Put stuffing in turkey. Magic! its ready to eat.

**Payden Dingman**  
**Ingredients;**  
1 turkey over 25 lbs.  
2 bowls of stuffing  
1 salt shaker full of salt  
1 crock pot.

**Directons;**  
First turn the crock pot on low for a half hour. Then cut the back off, cut little slots and leave about half inch thick layers of turkey. Once you’ve done that, put the stuffing in the slots. When it is about half way full. Put some salt in all the slots. Then fill it the rest of the way up. Sprinkle salt on it. Then put it in the crock pot for three to four hours. Then my favorite part, DIG IN!!!

**Alan Huffman**  
**Ingredients;**  
Salt, pepper 3 tsp.  
Turkey 50 lbs-100 lbs  
5 tsps grease or oil  
pan  
stuffing 5 bags of stuffing  
oven

**Derections;**  
1. First you kill turkey.  
2. put salt and pepper on.  
3. put grease or oil on pan.  
4. put it in the pan.  
5. then put in oven set for 57 degrees.  
6. take out turkey and let cool 3 hrs.  
7. put stuffing in turkey half way in.  
8. last you eat and have thanks.

**Derek Anderson**  
**Ingredients;**  
a pan  
one spoon full of stuffing  
seasoning salt  
salt  
peper  
2 spoons full and a half of oil.

**Directins;**  
1. get the turkey out of the freaser  
2. then get a pan out  
3. next put the oil in it.  
4. next put the turkey in it.  
5. then put the seasoning salt salt peper one spoon full of stuffing.  
6. then put the turkey in the oven.  
7. next put the oven for ten degrees and ten hours.  
8. next get the turkey out of the oven.  
9. last you eat the turkey.

**Cody Barnes**  
**Ingredient;**  
Buy it  
buy salt  
cook it  
eat it.

**Directions;**  
First you take the guts and the hert out. Next you put a pukre in it. then you wait for thee mintes then you take the puker then you eat.



# Marsing drops season opener at Fruitland

## Huskies pick up first win at Rimrock

Fruitland survived a third-quarter rally and held off Marsing 54-47 in the Nov. 19 season opening game for the Lady Huskies basketball team.

The Huskies (1-1 overall) evened their record, however, last Thursday, with a 51-42 win at Rimrock.

Against the Grizzlies, Marsing used a 19-7 run in the third quarter to cut a 15-point deficit to 2 points when junior center Amanda Stewart hit an 8-foot jumper that pared the Fruitland lead to 32-30.

Fruitland's offense reignited in the final quarter and the Grizzlies, again, built a double-digit lead, 51-37 with just over 2 minutes remaining.

And again, Marsing rallied.

Stewart hit another short jumper at the 2:00 mark and was fouled. She hit her free throw and Marsing closed within 51-46, but that was as close as Fruitland would allow.

Poor shooting plagued both teams in the first half. Marsing, in particular.

Coach Don Heller says his team was impatient on offense.

"If we had patience in the first half and would have run our offense – and patience against the press. We were just throwing the ball away," Heller

says.

Marsing was wound a little too tight, but that can be attributed to first-game nerves. With the season underway, Heller says the team can now work on real-game situations.

"It's hard to practice," he says. "You're second-stringers aren't always going to put the same kind of pressure that a team like (Fruitland) does. Those things come. I'll just change my personnel – where I put them on the floor, to give us a little more balance.

Nothing fell for the Huskies

in opening quarters. Marsing managed only five points in the first period, eight in the second; and not a point in the final 5:00 of the half.

Stewart and senior guard Aime Vanek sat on the bench for a good portion of that time – Vanek in foul trouble and Stewart nursing a sore shoulder.

A 15-0 run by the Grizzlies during those minutes allowed Fruitland to go into the locker room with a 28-13 lead at intermission.

Sore shoulder



### Found the opening

Marsing senior Amber Vestal finds a teammate with an inbound throw.

notwithstanding, Stewart was a dominating presence for Marsing. She paced the Huskies with a game-high 25 points, despite not practicing with the team a week prior.

Heller says Stewart aggravated her shoulder in weight training.

"She's got something wrong with her rotator cuff," Heller says. "It was hurting her pretty good." – CM



### Eyeing the hoop

Freshman Tori Kent looks for the open shot, as teammate Amanda Stewart (left) looks on.



### Tough in the middle

Tori Kent protects the ball after grabbing a rebound under the Marsing basket.

**Order Now! 71 Different Bulk Dry Goods for Holiday Baking or Storage!**

*Holiday Sale! 15% Off*

7 GRAIN CEREAL - 25 lbs. Reg. \$35.39 - SALE \$30.08

ORGANIC BLEACHED FLOUR - 25 lbs. Reg. \$18.25 - SALE \$15.51

ORGANIC WOLE WHEAT STONE GROUND - 50 lbs. Reg. \$32.20 - SALE \$29.90

ORGANIC YELLOW POPCORN - 25 lbs. Reg. \$23.15 - SALE \$19.68

**Essence of Life** 208-896-7001

107 Main Street • Marsing

Hours: Mon-Fri 9am - 5 pm

**DENTURES DIRECT TO PUBLIC**

**ONTARIO DENTAL ARTS**

Kevin Tatlock, Denturist

473 SW 12th St. (behind Chevron)

**541-889-3282**

*Come in and talk with Kevin about these common worries:*

- Fit
- Appearance
- Cost

We have plans for all budgets

Most dental insurance accepted

Open Monday through Friday (closed Thursday afternoons)

**\$99 PER MONTH\***

**MAKES YOU KING OF THE MOUNTAIN.**

For a limited time, \$99 per month and low 9.9% financing put you on the world's best-selling mountain sled – the Polaris RMK. Powered by Polaris Liberty™ engines, 600, 700 and 800 RMKs deliver the rock-solid quality, performance and handling that have made Polaris the industry leader for 12 straight years. So come on in and see us for a great deal on a brand new Polaris snowmobile... because it's good to be king.

**POLARIS**  
The Way Out.

**GRIZZLY SPORTS**  
Sales • Parts • Service • Accessories

5604 Cleveland Blvd. • Caldwell, ID

**454-8508**



# Homedale knocks off Weiser

*Trojans muster first win of season, despite poor shooting*

A win is a win, no matter how ugly it is. Homedale's girls' basketball team survived a poor night shooting and outlasted Class 3A Weiser 38-32 at home in the Trojans' season opening game. Senior Kelsi Haylett led Homedale with 13 points and



**Directing the Trojans**  
*Senior Taci Morris motions to teammates during Homedales 38-32 win over Weiser last Thursday.*

## Marsing school district receives project award

The Marsing school district's Federal Programs Department hasreceived a notice for a project award in the amount of \$2,500 from the Idaho Commission on Hispanic Affairs. The award was granted for the provision of assistance in the "After School Program."

Subscribe today!

Have the Owyhee Avalanche delivered to your home each week!

337-4681

5 steals. The point guard's 5-for-11 from the field was the only bright spot offensively for the Trojans (1-0 overall).

"She had a fairly decent night, other than her 3-point shooting," Trojan coach Mark Weekes said. "She dished out

a couple of assists, had 5 steals and 5 rebounds; so, she had a very good game, for a point guard."



**Looking for daylight**  
*Senior Jen Anzaldúa looks for help and two Weiser defenders close in.*

The team shot a dismal 23 percent from the field.

It got so bad in fact, that in the third quarter, the Wolverines managed to outscore Trojans just 4-3 for the period.

"(We played) pretty rough," Trojan coach Mark Weekes said. "We were playing like it was our first game. We shot real poorly."

Homedale did run the floor well, particularly on defense. The Trojans ran a full court man-to-man defense.

"We're still a little out of shape, yet," Weekes said. "But we've still got the ability to play a full court man the whole game and put a lot of pressure on teams the whole time; and make them move."

"I thought we did some good stuff, but we've got plenty of stuff to build on," Weekes said. — CM



*Homedale senior Kelsi Haylett led the Trojans to a 38-32 victory over Weiser in the team's season opener last Thursday. Haylett scored a team-high 13 points, grabbed 5 rebounds and had 5 steals.*

## Jordan Valley has a girls' ball team, really

First-year coach Jeremy Chamberlain has his work cut out for him.

So little attention has been paid to the Mustangs' girls' basketball team, that the coach didn't even know the team's record from last season.

"I wanna say something like, 2-10 maybe, in (Old Oregon) league," Chamberlain says. "I asked a few of them and they could never come up with a conclusive overall record, but it wasn't very good."

Jordan Valley girls and boys will host Crane next Tuesday to open the season. Junior varsity games begin at 3 p.m. Varsity matchups immediately follow at 6 p.m.

First up for Chamberlain, is to use the success of the Mustangs' volleyball season as a catalyst and model for teamwork. Something that was missing last season, he says.

"From the hear-say, I'm getting that they haven't been working well as a team together," Chamberlain says. "Not a lot of cooperation on the court; and there are a lot of inexperienced players."

Of the 15 girls on the team roster, 13 of them played volleyball for Jordan Valley. All five of Chamberlain's juniors were teammates on a pretty decent Mustang squad that finished the season with a winning record and a single conference loss.

"They're kind of the athletes of the group," Chamberlain says.

Anna Watkins, Shari Baltzor, Julie Eiguren, Katie Johnson and Melinda Johnson make up the formidable junior class to which Chamberlain refers. Baltzor, Eiguren and Watkins are joined by seniors Emily Mackenzie and Gena Franke-Hall, as letter returners for Jordan Valley.

The Mustangs have some height, which is always an advantage. Franke-Hall is 6-1, Eiguren 5-11. The other veterans stand between 5-6 and 5-9.

"Our height is above average," Chamberlain says. "Our talent level is below average at this point, because we haven't had the fundamentals here."

Youth and the lack of experience will pose the biggest problems for Chamberlain. He says it could take a while for the girls to adjust to a new coach and system.

"We're going to use a motion offense," Chamberlain

says. "We're going to pick the tempo via a fast-paced game. Some full-court offense, full-court defense."

"That's something that they're not used to yet. They've been a half court offensive and defensive team," he says. — CM

FALLING LEAVES.  
COLLEGE FOOTBALL.  
APPLE CIDER. US.  
FOUR THINGS YOU CAN COUNT ON EVERY FALL.

**BAUER**  
HEATING & COOLING  
Residential Commercial  
Jerry Perkins  
Homedale • 337-5812  
573-1788 • 337-3674

It's good to know that, just like the changing season, you can depend on us. And we'll come and check out your furnace. Now. Before you even need it. Whatever it takes.

**Special Financing Available Now!**  
**24 Hour Emergency Service**

Heating & Cooling Systems Since 1904  
Ben & Lori Badiola / Owners



# Holiday Savings



**Kitchen Aid**  
Super Capacity  
Washer & Dryer  
*Parma Furniture Exclusive*  
**\$50 Nationwide**  
Buying Group  
(Rebate on Now)



**Whirlpool 25 cu. ft.**  
**side-by-side**  
**Refrigerators** **\$995**  
• Ice & water in door  
• Free Delivery  
• Color biscuit or white



**Whirlpool**  
Power Saver™ Dishwasher  
GU1500  
• 5 Level Direct Feed Power Clean  
• 6 Automatic Cycles  
• PowerScour™ Option  
\*Factory \$30 Rebate  
American Express Check Rebate  
\* Exclusive \$25  
Parma Furniture Rebate



**Huge**  
**Selection of**  
**Entertainment**  
**Cabinets on**  
**Sale**



**Get Both**  
**Lane®**  
**Recliners**  
**for only**  
**\$599**  
**Pair**



**Super**  
**Savings on**  
**Lane®!**



**LEATHER!**  
**Purchase the Pair**

**\$799<sup>00</sup>**



**For Both**  
**Reclining Chairs**

**\$799<sup>00</sup>**



Choose from the Largest Selection of  
Dining Room & China Hutch Sets

*Be Ready*  
*For That*  
*Thanksgiving*  
*Feast!*

**Lane Leather Sale on Now!**



**CARPETING**  
Get new flooring  
before the snow flies!  
Save on Carpet, Vinyl  
& Laminate Flooring

**Free Vacuum with**  
**Purchase of**  
**100 yds. Carpet or**  
**Vinyl**  
Prices Effective 11/16-11/30



**Simmons Bedding Sale**



**Beautyrest**  
**Sets from**  
**\$499**



**HITACHI**  
**43" HDTV**  
**Monitor/NTSC**  
**Projection TV**  
**\$1,999**



**HITACHI**  
**50" Dual Tuner PIP Stereo**  
**Projection TV**  
**\$1,499**  
**HITACHI**  
**60" Dual Tuner PIP Stereo**  
**Projection TV**  
**\$1,699**

**PACIFIC**  
**ENERGY**



21 cu. ft.  
**Commercial**  
**Freezer**  
**\$489**  
-\$50 In Store  
Rebate  
**\$439**



**Lane Cedar Chests In Stock Now!**



**Free Delivery & Set-Up**

**Parma Furniture Co.**

"Like Having A Friend At The Factory" Locally Owned & Operated for 40 Years

**108 3rd St. • Parma, Idaho 722-5158**

**toll free: 888-722-0078**





# Young Wildcats look to run over WIC competition

*Wilder hopes to improve on 8-12 season*

Third-year coach Tomas Puga and the Wilder girls' basketball team are hoping that an up-tempo offense will propel the Class 1A Wildcats into the Western Idaho Conference's upper echelon.

Wilder (8-12 overall, 6-8 WIC in 2001-02) finished in the middle of the conference pack last season, but with three starters returning this year, Puga is optimistic that the team could move up in ranking and respect.

The Wildcats will rely on guard Jenny Waters to move their offense. The 5-5 junior scored nearly 15 points per game last year. Her speed, quickness and aggressiveness will play a critical role in the team's success.

Waters is complimented by 5-11 junior Pam Travis and 5-8 junior forward Brenda Zamora. All three were in the starting lineup last year.

Puga will also rely on sophomore Doris Rodriguez,

a 5-4 guard, to add a spark to the Wilder offense.

They're young, but experienced.

"As long as they stay healthy and are in good standing academically, we're looking at (placing) somewhere in the middle of the league," Puga says.

Possibly, a top-four finish, he says.

"We're in a good league," Puga says. "Rimrock's the team that owns the whole league. And then you got Horseshoe Bend, who is an excellent team; and then, Cole



**Runnin' Wildcats**  
*Wilder junior Jenny Waters pushes the ball upcourt during practice. Waters will be the Wildcats' primary offensive threat this season. She averaged 14.7 points per game last year.*



Junior Jenny Waters

Valley and us."

Puga says the Wildcats will compensate for a lack of size, with speed and quickness.

"We're small and we just run, run, run," Puga says. "We have a good half court set because some teams will try to slow us down, but we just want to run, because we're small."

Puga's realistic too.

"Rimrock will outrun us, but at least we're going to be running anyway," he says.

Wilder will run, but it will also shoot from long range.

Three-point shooting will be a staple in the Wildcats offensive menu.

"Especially with Waters," Puga says. "When I played, we were bombing away from outside, so I like to play that game. Fast and long."

Waters was all-conference selection last season and Puga says as long as she's healthy, she'll be Wilder's go-to person.

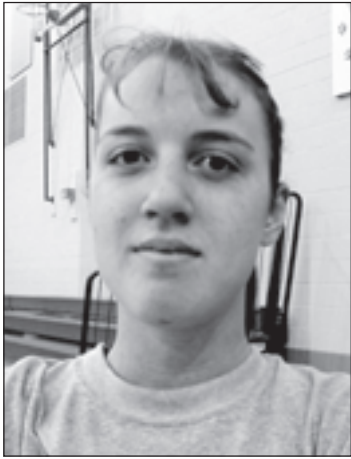
"She's key," he says. "She can run the show. If not, I've got a sophomore (Rodriguez) who's going to help me out." — CM



Junior Brenda Zamora



Sophomore Doris Rodriguez



Junior Pam Travis



Third-year Wildcat coach Tomas Puga

## Raiders win season opener, but fall to Marsing

The Rimrock girls' basketball team opened the 2002-03 season Nov. 19 on the road, in the hostile confines of Glenns Ferry High School.

This year, the Raiders again figure to be one of the dominant Class 1A programs in the state. If their 46-34 win over the Class 2A Pilots is any indication,

Rimrock may be on its way to another run at the state title.

Rimrock (1-1 overall) stumbled however, last Thursay, in a rare home loss to Marsing 51-42.

"We have a lot to learn," Rimrock coach Bob Delle says. "Any time you go to Glenns Ferry and get a win, we're happy with it."

It's a bitter rivalry between Glenns Ferry and Rimrock, Delle says.

"They're very aggressive," he says. "I knew we would have a handful. We always do when we go to Glenns Ferry. Outside of league competition — and maybe even including league — (this) is the game of the year that our kids want to win."

"There's a pretty good rivalry between Glenns Ferry and Rimrock; and there has been for a long time for a long time," Delle says.

Junior guard Adrea Thomas led the Raiders in scoring with 17 points. She also snared 6 rebounds.

Heller says, however, that scoring points isn't the only thing on which his players focus. The coach has devised an elaborate point system that tracks the productivity of his players. Points are awarded for shots made, rebounds, assists and steals. Points are deducted however, for turnovers and poor shooting.

Against, the Huskies, Rimrock had to stop 6-3 center Amanda Stewart and had a hard time doing so.

The Marsing junior scored 17 points and snared 9 rebounds. Annalise Field led the Raiders with 12 points and 5 assists.

Senior guard Amie Vanek added 9 points and 8 assists for the Huskies. — CM



Michelle Hipwell

**Hipwell injured, will miss season**

Former Rimrock standout, Michelle Hipwell will miss her first season with the University of Alaska-Fairbanks women's basketball team, due to an injury she suffered in practice.

Hipwell will receive redshirt status for the 2002-03 season. She maintains four years of collegiate eligibility.

| Past high school football champions |               |
|-------------------------------------|---------------|
| Class 2A                            |               |
| 1977                                | Homedale      |
| 1978                                | Kamiah        |
| 1979                                | Lapwai        |
| 1980                                | West Side     |
| 1981                                | Homedale      |
| 1982                                | Homedale      |
| 1983                                | West Side     |
| 1984                                | Gooding       |
| 1985                                | Gooding       |
| 1986                                | Homedale      |
| 1987                                | Homedale      |
| 1988                                | Firth         |
| 1989                                | North Fremont |
| 1990                                | Valley        |
| 1991                                | Homedale      |
| 1992                                | Homedale      |
| 1993                                | Fruitland     |
| 1994                                | Glenns Ferry  |
| 1995                                | Glenns Ferry  |
| 1996                                | Parma         |
| 1997                                | Homedale      |
| 1998                                | Firth         |
| 1999                                | Teton         |
| 2000                                | Kamiah        |
| 2001                                | Kamiah        |
| 2002                                | Melba         |

## Weather

|          | H  | L  |
|----------|----|----|
| Mon. 18  | 57 | 17 |
| Tue. 19  | 60 | 16 |
| Wed. 20  | 58 | 26 |
| Thur. 21 | 57 | 25 |
| Fri. 22  | 60 | 25 |
| Sun. 24  | 61 | 15 |

## Quality ELECTRONICS

- Specializing in TV and VCR repair
- All work guaranteed
- Large stock of parts on hand
- The Latest In Diagnostic Equipment
- Free Estimates!

"Old-fashioned service on modern technology"

Mark Thatcher-Owner 337-3822



# Mustangs overcome odds, nip Pilots for title

## Melba snags first Class 2A football crown

It was a tale of two seasons for the Melba High School football team.

The Mustangs finished the regular season with a ho-hum 5-4 record, but went a perfect 4-0 in the postseason.

In the process, Melba picked up its first Class 2A state football crown last Friday with a 27-26 overtime victory over Glenns Ferry.

The Mustangs' David Romero kicked an extra point in the overtime period that

made the difference against the Pilots at Boise State's Bronco Stadium.

Glenns Ferry scored first in the extra period, but missed its extra points attempt. Romero, who had reportedly suffered a tendon injury earlier in the season, hadn't attempted any extra points during the game until his game winner.

Much like their regular season, Melba played the underdogs in the final game of the year. Fittingly, the Mustangs fell behind the Pilots 13-0 at halftime, only to rally in the second half.

And more fittingly still, Melba didn't score the game-winner until its final opportunity in the overtime

period.

On a fourth-and-one-yard play, the Mustangs' Jake Silver scored to tie the score at 26-26.

The Mustangs finished third in the Western Idaho Conference, behind second-place Homedale and Parma. The latter two teams made early exits in this year's playoffs, but the Mustangs won four straight.

Melba easily defeated Potlatch and Orofino – 42-30 and 55-25 respectively – in the opening rounds of the state tournament, but had to survive nailbiters in the state semi-finals and finals.

The Mustangs edged Grangeville in the semi-final game 16-14. – CM

# Marsing, Homedale will make track-n-field upgrades

## Assistance needed to comply with new regulations

The Marsing and Homedale school boards approved funding earlier this month, to make upgrades to pole vaulting equipment for the 2003 track and field season.

It was basically a do or die situation.

The national organization that governs high school sports has mandated that equipment be upgraded to prevent serious injury or death to participants.

If schools do not comply with the standard upgrade, they cannot feature the event at track and field meets in 2003.

There were a handful of incidents documented last year; and at least three deaths associated with competitive pole vaulting. The actions by the National Federation of High Schools are a response to these incidents.

The upgrades will cost the school in the neighborhood of \$10,000 and both Marsing and Homedale School Districts approved allocating the lion's share of total.

Marsing pole vaulting coach Rick Folwell made the pitch to

his school board Nov. 12. Homedale athletic director, Randy Potter did the same at the district's Nov. 11 meeting.

Folwell, a former vaulter from Vallivue agreed with the national mandate. He said it was good for the sport.

"It makes it safe for those kids who aren't experts yet," Folwell said.

Most notably, the pits will be widened and lengthened to provide a larger area for the vaulter to fall.

The new mats present the largest financial obstacle for the schools' athletic departments. They cost about \$8,000. – CM

# School menu

**Nov. 27-Dec. 3, 2002**

**Marsing**

Wednesday Nov. 27 : Thanksgiving Break- No School.

Thursday Nov. 28: Thanksgiving Break- No School.

Friday Nov. 29: Thanksgiving Break- No School

Monday Dec. 2: Ham and cheese sandwich, raising, chocolate pudding, variety milk, bit-o-gold nuggets fresh salad bar (4<sup>th</sup> - 12<sup>th</sup>) fresh baked roll, to go box.

Tuesday Dec. 3: Red baron pizza, fruit variety, garden salad w/dressing, cookies-chocolate chip, variety milk, soup and sandwiches, fresh salad bar (4<sup>th</sup> – 12<sup>th</sup>) fresh baked roll, to go box.

**Homedale Elementary**

Wednesday Nov. 27: No School

Thursday Nov. 28: No School

Friday Nov. 29: No School

Monday Dec. 2: Cheese yum yum or weiner wrap, gren beans, mixed fruit, rice krispie treat, choice of milk.

Tuesday Dec 3: Beef or

chicken taco, lettuce, cheese, and tomatoes, corn, pears, choice of milk.

**Homedale Middle**

Wednesday Nov. 27: No School.

Thursday Nov. 28: No School.

Friday Nov. 29: No School.

Monday Dec. 2: Haystack, roll, veggie sticks, fruit, or: salad bar, choice of milk.

Tuesday Dec. 3: Chicken or beef nuggets, fruit, cinnamon roll, choice of milk.

**Homedale High**

Wednesday Nov. 27: No School.

Thursday Nov. 28: No School.

Friday Nov. 28: No School.

Monday Dec. 2: Pizza or fajita, salad, fruit, dessert, choice of milk.

Tuesday Dec. 3: Popcorn chicken or weiner wrap, scalloped potatoes, fruit, choice of milk.

**Bruneau-Grand View**

Wednesday Nov. 27: No School, Thanksgiving vacation.

Thursday Nov. 28: No School, Thanksgiving day.

Friday Nov. 29: No School, Thanksgiving vacation.

Monday Dec. 2: No menu available.

Tuesday Dec. 3: No menu available.

## Senior news

**Homedale Senior Citizens' Center**

Thursday November 28: "Closed" Thanksgiving Holiday!!!

Friday November 29: "Closed" Thanksgiving Holiday!!!

Monday December 2: There will be an Area III council meeting at Marsing.

Tuesday December 3: Dinner served at 12:00, menu includes; sloppy joes, veggies, salad, fruit and cookies. Bingo, and shopping bus to Homedale at 1:30.

# Public notices

**NOTICE OF SHERIFF'S SALE Case No. CV 96-01314**

IN THE DISTRICT COURT OF THE THIRD JUDICIAL DISTRICT OF THE STATE OF IDAHO, IN AND FOR THE COUNTY OF OWYHEE

HARRY SHOWALTER, deceased, by ANITA SHOWALTER, Personal Represenative, and ANITA SHOWALTER, Plaintiffs,

vs.

SYLVIA OLIVAS, a single person; MATHEW OLIVAS and TRINE OLIVAS, husband and wife; AND any and all other persons unknown, claiming any right, title, lien or interest in the real property, personal property and/or water rights described in the complaint adverse to Plaintiffs' right, title or interest thereto, Defendants.

By virtue of an execution issued out of this Court in this action, wherein the plaintiffs obtained Judgment against the Defendants which, together with accrued interest, totalled \$483,449.43, I have levied upon the following described property located in Owyhee County, State of Idaho, to-wit:

That property described in Exhibits A and B appended hereto.

NOTICE IS HEREBY GIVEN, that on the 12<sup>th</sup> day of December, 2002, at the hour of 2 o'clock p.m., I will sell at public auction to the highest bidder for cash, lawful money of the United States of America, said property to satisfy said Judgment, together with all the costs that have accrued. Said sale will be held at the front steps of the Owyhee County Courthouse in Murphy, Idaho.

The real property to be sold pursuant to this notice is subject to redemption by the judgment debtor(s) or other redemptioners within six months after the sale as provided in Idaho Code 11-401 to 11-407.

**EXHIBIT "A"**

A parcel of land within the West Half of the Northwest Quarter (W 1/4 NW1/4) of Section 24, Township 16 South, Range 9 East, Boise Meridian, Owyhee County, Idaho, and more particularly described as follows:

COMMENCING at a brass-cap marking the Northwest corner of Section 24, Township 16 South, Range 9 East, Boise Meridian;

THENCE South 54 degrees 09' East, 859.6 feet to the true point of beginning;

THENCE South 34 degrees 13' East, 560.0 feet;

THENCE South 55 degrees 47' West, 1230.7 feet to the west boundary of said Section 24;

THENCE North 0 degrees 13' East, 678.9 feet along the west boundary of said Section 24;

THENCE North 55 degrees 47' East, 846.9 feet to the True Point of Beginning. Together with all water rights evidenced by water right numbers 51-04037, A51-04037 and A51-12780

EXCEPTING THE FOLLOWING DESCRIBED 2 PARCELS OF LAND:

**PARCEL NO. 1:**

A parcel of land in the NW1/4, Section 24, Township 16 South, Range 9 East, Boise Meridian, being more particularly described. As follows:

BEGINNING at the NW corner of the NW 1/4 of Section 24, Township 16 South, Range 9 East, Boise Meridian

THENCE running South 0 degrees 12' 33" West for a distance of 358.0 feet to a point;

THENCE running South 35

degrees 36' 34" East for a distance of 512.9 feet, said point is the TRUE POINT OF BEGINNING, said point is also the SW corner of Lot 1, Block 12 of Murphy Hot Springs Subdivision No. 1 as recorded in Owyhee County Courthouse;

THENCE South 26 degrees 30' East for a distance of 124.28 feet;

THENCE North 56 degrees 28' East for a distance of 189.61 feet;

THENCE North 46 degrees 27' West for a distance of 128.32 feet to a point, which lies on the Southely boundary of said Murphy Hot Springs Subdivision No. 1;

THENCE South 55 degrees 47' West for a distance of 145.43 feet, along the Southerly boundary of Lot 1, Block 12, Murphy Hot Springs Subdivision No. 1 to the TRUE POINT OF BEGINNING.

**PARCEL NO. 2:**

A parcel of land in the NW 1/4 of Section 24, Township 16 South, Range 9 East, Boise Meridian, Owyhee County, Idaho described as follows:

BEGINNING at the Northeast corner of Lot 28, Block 7, Murphy Hot Springs Subdivision No. 2, Owyhee County, Idaho;

THENCE North 34 degrees 13' 00" West 37.5 feet to a point;

THENCE South 55 degrees 47' 00" West 85 feet, more or less, to the East Bank of Jarbidge River;

THENCE in a Southeasterly direction 37.5 feet, more or less, to the Northwest corner of Lot 29, Block 7 of Murphy Hot Springs Subdivision No. 2;

THENCE North 55 degrees 47' 00" East 80.8 feet to the point of Beginning.

TOGETHER with 0.060 (cfs) of water evidenced by IDWR Water Right Number 51-04037.

**EXHIBIT "B"**

Electric grill; propane grill; commercial toaster; electronic cash register; adding machine; two (2) display cases; large propane heater (ceiling type); large wood stove; ice maker; ice storage chest; three (3) refrigerators; four (4) freezers; storage cabinets; two (2) tables; eight (8) chairs; one (1) corner booth; two (2) straight back booths; assorted pots, pans, plates, glasses, cups and table ware; one (1) swamp cooler; one (1) air compressor; two (2) dish washers; one (1) pool table; one (1) juke box and records (not current); miscellaneous towels and swim suits; two (2) washers; two (2) dryers; two (2) beds left in house; extra bed frames and springs; bed linens; bed spreads; five (5) mobile homes, one (1) in end of bathroom, more particularly described on Exhibit "A" attached hereto and by this reference made a part herof; refrigerated trailer for deer, pop and beer storage (summer); and five (5) electric heaters; together with all additions thereto and replacements therof

- 1954 Starfleet trailer house, Identification Number 5427SF-1.613, Idaho Title No. 612529
- 1955 Richardson trailer house, Identification Number 35,220,995, Idaho Title No. 1196556
- 1955 Commodore trailer house, Identification Number 54,313, Idaho Title No. B 1546170
- 1960 Detroit trailer house, Identification Number FJ361CKP-10,490, Idaho Title No. 1171038

Dated this 13<sup>th</sup> day of November, 2002.

Gary Aman, Sheriff

By R. Freund, Deputy Sheriff

11/27,12/4,12/11/02



# Commentary

## Farm Bureau

### Cost of Thanksgiving meal drops

This Thanksgiving Americans have even more to be thankful for since the cost of the traditional holiday meal decreased from last year, according to the American Farm Bureau Federation.

In AFBF’s annual informal survey of the price of basic items found on the Thanksgiving Day dinner table, the average cost of this year’s feast for 10 is \$34.56, a 48-cent drop from last year’s survey average of \$35.04. It marks only the second drop in average price since 1991.

The traditional dinner includes turkey, stuffing, cranberries, pumpkin pie and all the trimmings. “America’s farm and ranch families take great pride in providing the safest, most abundant and most affordable food supply in the world,” said AFBF President Bob Stallman. “As we sit down this Thanksgiving to savor the bounty produced, it is appropriate to remember that it all starts on America’s farmland. It is truly one of our greatest blessings.”

The AFBF survey shopping list includes turkey, stuffing, sweet potatoes, rolls with butter, peas, cranberries, a relish tray including carrots and celery, pumpkin pie with whipped cream and beverages of coffee and milk, all in quantities sufficient to serve a family of 10.

The cost of a 16-pound turkey, at \$14.84 or roughly 93 cents per pound, reflects a decrease of 2 cents per pound, or a 32-cent drop in the total average, from the 2001 average. This is the largest contributor to the overall drop in the cost of the Thanksgiving dinner.

“The drop in the price of turkey is probably due to grocery stores stocking up early on a plentiful supply of frozen turkeys,” said AFBF Economist Mark Jenner. “Our volunteer shoppers are asked not to use prices that require promotional coupons or purchase deals, such as spend \$50 and get a free turkey. The fact that our volunteer shoppers still find the average price of turkey below a dollar per pound is an amazing value by any standard.”

According to Jenner, new data available from the Agriculture Department on last year’s whole, frozen turkey indicate that two out of three turkeys were sold on a holiday special. Based on those advertised specials, USDA found that the prices paid for whole, frozen turkeys in November 2001 were half of what consumers paid for the same turkey during the other 11 months of the year. That means most consumers probably purchase a Thanksgiving turkey for considerably less than the AFBF survey’s average.

“USDA data also reveals that American consumers last year bought 10 times the number of whole, frozen turkeys during November than any other month of the year,” Jenner said.

A majority of other items on the AFBF survey also dropped in price. Items showing a decrease included sweet potatoes, \$2.37 for three pounds; a 16-ounce package of frozen green peas, \$1.29; a gallon of whole milk, \$2.76; a half-pint carton of whipping cream, \$1.23; a package of two nine-inch pie shells, \$1.66; and a 12-ounce package of fresh cranberries, \$1.68.

Items that increased in price this year were a 14-ounce package of cubed stuffing, \$2.41; a 30-ounce can of pumpkin pie mix, \$1.73; and a 12-ounce package of brown-and-serve rolls, \$1.48. In addition, a combined group of miscellaneous items, including coffee and ingredients necessary to prepare the meal (onions, eggs, sugar, flour, evaporated milk and butter) increased to \$2.57. The price of a combined pound of celery and carrots, used for a relish tray, remained the same, 54 cents.

Although the survey reveals a decrease in price this year, Jenner said throughout the years, Americans have enjoyed very stable food costs.

“The average prices for the AFBF Thanksgiving Day dinner for the last 17 years have increased about two percent per year, which is well below annual increases in the cost of living for the same period,” Jenner said. “Based on this year’s average meal cost, Americans can enjoy a traditional holiday meal for just \$3.50 per person. That’s something worthy of thanks.”

## On the edge of common sense

Baxter Black, DVM

### A turkey’s thoughts at Thanksgiving

“I always thought I’d do more with my life. Become a writer, maybe. But it was hard to hold a pencil, I couldn’t find a typewriter with the turkey alphabet, it only has 5 letters counting the double B, and it didn’t seem right to use a quill.

Like any young polt I entertained the idea of becoming a fireman ‘til I found out I was flammable.

As I matured I became active in worthy causes like “Free Tom”, and the Turkey Anti-Defamation Society and The 2 Kilometer Turkey Trot to benefit the Dumb Friends League, in which turkeys outnumber cows, the next largest species, by 100 to 1.

I painted signs for the Turkey Illiteracy Foundation. Which was sort of foolish ‘cause nobody could read ‘em and I couldn’t write. I just drew pictures of turkey’s looking at pictures. And, of course I forget the Anti-Subway Sandwich protest. We held a sit-down strike in front of the local Subway till most of us got run over.

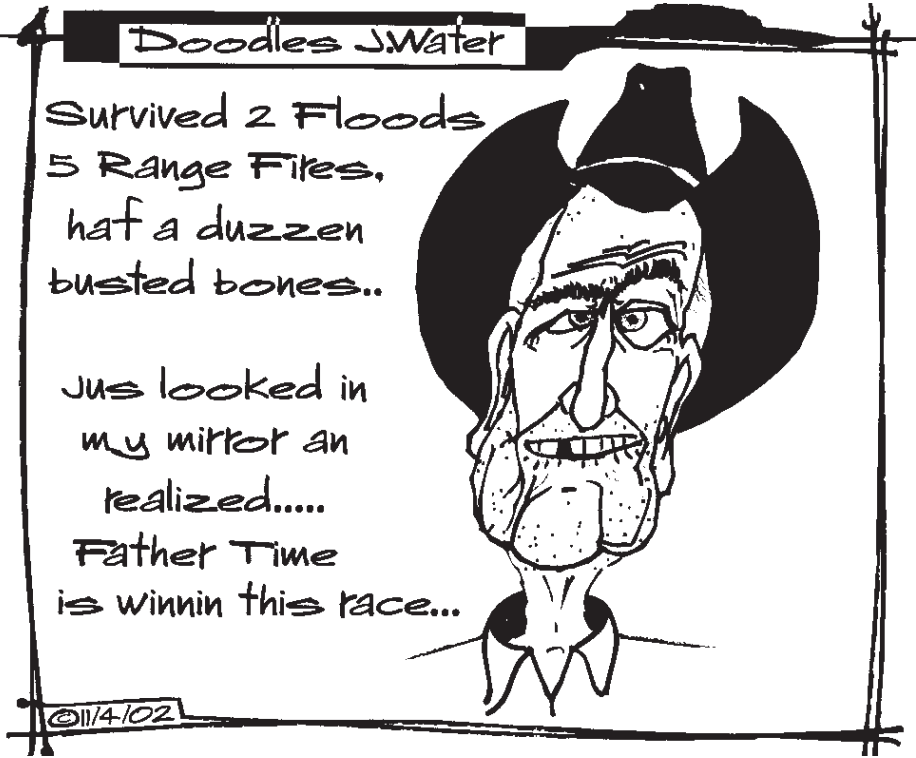
I went through the snood and wattle piercing phase. We thought it looked cool. Then our apartment manager put a band around our ankles. You talk about being decked out. We could rattle when we strutted our stuff.

But it all went by so quickly and now I’m in the prime of life. I look at my contemporaries. We’re all grown and have big plans. I’ve been working on an International Turkey Olympics, maybe hold it in Ankara. With events like Head Bobbing, Track Leaving, Egg Laying for weight and distance.

Lots of people don’t give much thought to a turkey’s point of view. They just assume we spend all day gobbling at each other, eating bugs and staring into space. In my case I spend most of time trying to think. Anything, just trying to think anything. When I put my mind on it sometimes I get an idea, as you can tell. The hard part is trying to remember it.

Did I mention politics? I know some may believe there are already too many turkeys in office; but I think I might have a chance. If I can just establish residence in Florida.

Oh well, people are talking about Thanksgiving. Everybody’s goin’ home for the holidays. Turkeys are a big part of it, I’m told. I’m not sure exactly what it is we do. But I hope we do it well ant that our contribution is appreciated.”





# Commentary

## Accuracy in media

### Lying, cheating, stealing

by Notra Trulock

Obstructing investigations of such crimes and covering up for their co-workers are some of the things that the Federal Bureau of Investigation and Los Alamos National Laboratory have in common. A new Justice Department (DOJ) Inspector General Report has uncovered a shocking pattern of misconduct on the part of senior FBI managers over the last decade. Meanwhile, a scandal involving the loss or theft of nearly \$3 million of government property at Los Alamos National Laboratory continues to unfold amidst charges of cover-ups by higher lab managers.

The DOJ inspectors sought to determine whether the FBI's system of discipline was more forgiving of senior managers than lower-ranking employees. The inspectors concluded there is not "sufficient evidence" to demonstrate preferential treatment for senior managers, but that the "perception" of unfairness is "strong, and not unreasonable." Even a cursory glance at the report shows why. It documents a persistent pattern of misconduct that has included lying under oath and making false statements to investigators. In one case, senior managers falsified travel vouchers in order to bill taxpayers for personal travel to a retirement dinner. By way of justification, many cited meetings that did not occur, in some cases with employees either on leave or out of the country, or participation at a conference that few actually attended.

The report also describes the internal government cover-up of FBI mistakes during the 1992 Ruby Ridge incident. The bureau tried to shield Headquarters officials Larry Potts and Danny Coulson from criticism for their role in formulating the "rules of engagement" that led to the killing of Randy Weaver's wife. Internal FBI and DOJ investigations went on for nearly nine years in a process the report says was "shrouded in secrecy." One senior agent was eventually sentenced to 18 months in prison for obstruction of justice. (Similar allegations have been made against the bureau for its conduct of the Oklahoma City bombing investigation, but there has been no action to date.) An FBI inspector was found to have "edited" other agents' FD-302s to remove "language harmful to the FBI" while other inspectors neglected to interview key eyewitnesses.

In both instances, the misconduct occurred in an attempt to protect senior managers and higher ups from disciplinary action that could prove harmful to their careers. In many cases, senior officials facing investigations were permitted to retire with their reputations, and their pensions, intact. Other managers under suspicion were promoted or received substantial bonuses while the investigations were ongoing. Inspectors conducting the inquiries also benefited from promotions or bonuses, in some cases authorized by the same officials they were investigating.

Meanwhile, new details have emerged in the Los Alamos National Laboratory scandal. Through the Project on Government Oversight, AIM has obtained internal lab reports that show more than \$2.7 million of computers, video cameras, cell phones, lasers, oscilloscopes, and machine tools among government property missing or stolen at the scandal-plagued New Mexico lab. The FBI has opened a full-field investigation of two lab employees alleged to have made "unallowable purchases" totaling more than \$50,000, and a team of Energy Department investigators has arrived in Los Alamos. The internal memos were prepared in early 2002 and include an itemized listing of property missing or stolen from 1999 to 2001. The memos cite growing concerns about the theft of lab property and the harm done to lab operations as a result. A lab security officer complained that thefts of items over \$5,000 aren't even reported. In other cases, items initially reported as lost were later determined to be stolen. Echoing earlier whistleblower allegations of a cover-up, as recently reported by AIM, the memos allege that a "professional inquiry" into the thefts is never conducted nor are reports to local police or the FBI adequate to initiate an outside investigation. Publicly, a Los Alamos spokesman claimed that only \$100,000 of equipment was missing in 2001, but an April 2002 memo written by the lab's Chief Financial Officer reports property valued at more than ten times as much, nearly \$1.3 million, was actually missing in 2001.

Another common denominator between the Bureau and Los Alamos is the utter lack of accountability. Few of the bureau officials mentioned in the Justice report suffered any consequences for their misdeeds. Few Energy Department employees believe anything will come of the new scandal at the Los Alamos lab. Both FBI and Energy Department managers reserve their wrath for whistleblowers and internal critics.



Betty  
Crocker

ASK  
BETTY

## Easy, cheesy appetizers

Dear Betty,

We're going to several holiday parties where I have to bring an appetizer. Any ideas?

Perterville, Calif.

Since you've got several parties to attend, I'm going to suggest an old appetizer favorite—a cheese ball—but with a new twist. Here's why: you can make all the cheese balls you'll need at the same—and ahead of—time. Then freeze them. Plus, a cheese ball is flavorful, festive and easy to serve with a creative assortment of crisp breads, crackers or sliced baguettes.

Now here's the twist: make your cheese ball in special shapes from a snowman to a pear to a pinecone. On my Web site, you'll find a recipe for transforming one cheese ball into great holiday shapes. You can make the cheese-ball mixture from scratch or buy it in the dairy case or deli. Once you have a cheese-ball mixture to work with, here's how to shape and decorate it to create a whimsical, good-to-the-last-bite party appetizer:

**Snowman.** Shape the mixture into two balls, one larger than the other. Wrap them in plastic wrap and refrigerate them until firm, about four hours. With the smaller ball as the head, arrange your "snowman" on a holiday serving plate. Decorate using a baby carrot for the nose, raisins for the eyes and buttons, pretzel sticks for the arms, red bell pepper strips for the mouth and scarf—and fresh cranberries and bay leaves for a holly crown.

**Pinecone.** Shape the mixture into an egg shape. Place the larger end down on a serving plate. Press the rounded ends of about 2 cups of sliced almonds into the ball. (Toasting makes the almonds extra tasty!) Sprinkle with crushed dark rye crackers, then wrap and chill. When ready to serve, garnish with sprigs of fresh rosemary.

**Pear.** Shape the mixture into a pear shape. Place the pear upright in a shallow bowl. Insert a piece of whole cinnamon stick for a stem, then spoon whole-berry cranberry sauce or chutney over the cheese pear. Cover and chill before serving.

Dear Betty,

What's the best way to keep cheese from getting moldy in the fridge?

Hampton, Ark.

I just learned this little trick to keep cheese mold-free longer from one of my colleagues in the Betty Crocker Kitchens. The secret is to tightly wrap the cheese in a fresh piece of plastic wrap every time you use it. Give it a try. It worked for me!

For more great ideas, visit my Web site: [BettyCrocker.com](http://BettyCrocker.com)

Questions?

Toll-free: 1-888-ASK BETTY

Write: "Ask Betty Crocker," One General Mills Blvd., Minneapolis, MN 55426

## Shoo-Fly 4-H club to reorganize

The Shoo-Fly Livestock Club will have a reorganizational meeting on Sunday, Dec. 1 at 7 p.m. at the Friends Community Church in Homedale.

Anyone age 8-19 years old with a livestock project is invited to attend. The club also offers a Cloverbud program for children from 5-8 years old. The group's leaders this year are Sue Williams, Melanie Harper, Elaine Black Kasey and Keri Garrett.

The group requests that everyone attending bring a canned food item from donation and a small gift (girl for girl, boy for boy) to be exchanged among fellow members. A \$5 limit for the gift or it can be a homemade item. Dues are \$5 per child and \$2 for the Cloverbuds.

For information contact Williams at 337-4226.



# Public notices

### NOTICE INVITING BIDS

The Homedale Highway District is inviting bids on the crushing of approximately 40,000 tons of gravel. Specifications and further details can be obtained by contacting Rob Atkins at 337-3500 at the Homedale Highway District office at 102 E. Colorado Avenue in Homedale. The sealed bids can be mailed to P.O. Box 713, Homedale, Idaho 83628 or delivered to the District Office. The sealed bids will be opened at 8 p.m. at the next regular meeting of the Homedale Highway District on December 4, 2002. The Board of Commissioners reserves the right to refuse any or all bids and to waive any technicality.

Terri Uria  
Secretary

11/13,20,27/02

### RESCHEDULED NOTICE OF TRUSTEE’S SALE

Trustee’s Sale No.  
02-MS-30824

Notice is hereby given that, Alliance Title ... Escrow Corp., the duly appointed Successor Trustee, will on December 10, 2002, at the hour of 02:00 PM, of said day, on the steps of the Owyhee County Courthouse, corner of State Highway 79 and Hailey Street, Murphy, ID, sell at public auction to the highest bidder, for cash, in lawful money of the United States, all payable at the time of sale, the following described real and personal property (hereafter referred to collectively as the “Property”), situated in the County of Owyhee, State of Idaho, to-wit:

Lot 7 of Block 3 of the Original Townsite of Murphy, Owyhee County, Idaho, according to the Official Plat thereof on file and of Record in the Office of the Recorder of Owyhee County, Idaho.

The Trustee has no knowledge of a more particular description of the above-referenced Property but, for purposes of compliance with Section 60-113 of Idaho Code, the Trustee has been informed that the address of 110 Rabbit Creek Rd, Murphy, ID 83650, is sometimes associated with said real property.

Said sale will be made without covenant or warranty regarding title, possession or encumbrances to satisfy the obligation secured by and pursuant to the power of sale conferred in the Deed of Trust executed by Clinton L. Beatey and Treva E. Beatey, husband and wife, as Grantor, to Alliance Title & Escrow, as Trustee, for the benefit and security of TMS Mortgage Inc., dba The Money Store, as Beneficiary, dated 4/27/1999, recorded 5/4/1999, under Instrument No. 228442, Mortgage records of Owyhee County, Idaho, the beneficial interest in which is presently held by HomEq Servicing Corporation, fka TMS Mortgage Inc, dba The Money Store.

The above Grantors are named to comply with Section 45-1506(4)(A), Idaho Code. No representation is made that they are, or are not, presently responsible for this obligation.

The default for which is sale is made is the failure to pay when due under the Deed of Trust Note dated 4/27/1999, the monthly payment which became due on 7/1/2002 and all subsequent monthly payments, plus late charges and other costs and fees as set forth. Amount due as of October 25, 2002.

Delinquent Payments from July 01, 2002 4 payments at \$275.65 each \$1,102.60 (07-01-02 through 10-25-02) Late Charges: \$314.03

Beneficiary Advances: \$3,569.43  
Total: \$4,986.06 All delinquencies are now due, together with unpaid and accruing taxes, assessments, trustee’s fees, attorney’s fees, costs and advances made to protect the security associated with this foreclosure. The principal balance is \$31,829.19, together with interest thereon at 9.600% per annum from 6/1/2002, until paid.

The Beneficiary elects to sell or cause the trust property to be sold to satisfy said obligation.

Dated: October 23, 2002

**Alliance Title & Escrow Corp., Trustee**

By Bobbi Oldfield  
Trust Officer

††c/o Regional Trustee  
Services Corporation,  
720 Seventh Avenue, Suite

400,  
Seattle, WA 98104

Phone: (206) 340-2550

Sale Information: <http://www.rtrustee.com>

ASAP504914

Bobbi Oldfield†

Trust Officer

11/6,13,20,27/02

### NOTICE OF TRUSTEE’S SALE

On the 25<sup>th</sup> day of February, 2003, at the hour of 10:45 A.M., of said day, (recognized local time), in the lobby of the Owyhee County Courthouse, Murphy, in the County of Owyhee, state of Idaho. First American Title Company of Idaho, Inc., an Idaho Corporation, as successor trustee, will sell at public auction, to the highest bidder, for cash or cashiers check (cash equivalent), in lawful money of the United States, all payable at the time of sale in compliance with Section 45-1506(9) Idaho Code, the following described real property, situated in the County of Owyhee, State of Idaho, and described as follows, to-wit:

The North 85 feet of the East 114 feet of Block 21 of the Amended Townsite of Homedale, Owyhee County, Idaho, according to the official plat thereof on file and of record in the office of the Recorder for Owyhee County, Idaho. EXEPTING THEREFROM the West 50 feet.

The Trustee has no Knowledge of a more particular description of the above referenced real property, but for the purposes of compliance with Section 60-113 Idaho Code, the Trustee has been informed that according to the County Assessors office, the address of 9 North 4<sup>th</sup> Street West, Homedale, Idaho, is sometimes associated with said real property.

Said sale will be made without covenant or warranty regarding title, possession or encumbrances to satisfy the obligation secured by and pursuant to the power of sale conferred in the deed of trust executed by **ROY R STUCKEY AND LaVELLA A STUCKEY, husband and wife**, as grantors, to **FIRST AMERICAN TITLE COMPANY OD IDAHO, INC.**, an Idaho Corporation, as successor trustee, for the benefit and security of **U.S. BANK NATIONAL ASSOCIATIN, previously doing business as United States National Bank of Oregon, aka U.S. Bank**, as beneficiary, recorded **February 10, 1998**, as Instrument No. **223999**, Mortgage Records of Owyhee County, Idaho.

THE ABOVE GRANTORS ARE NAMED TO COMPLY WITH SECTION 45-1506(4)(A), IDAHO CODE. NO RERESENTATION IS MADE THAT THEY ARE, OR ARE NOT, PRESENTLY

### RESPONSIBLE FOR THIS OBLIGATION.

The default for which this sale is to be made is the failure to pay when due, under Deed of Trust Note, the monthly payments for Principal and Interest of \$ 165.81, due per month for the months of February through September, 2002 and all subsequent payments until the date of sale or reinstatement, with interest accruing at 9.25% per annum, and continuing to accrue from January 5, 2002. Also due are delinquent and unpaid taxes for 2000 and 2001. The principal balance owing as of this date on obligation secured by said Deed of Trust is \$13,878.49, plus accruing interest, costs and advances. All delinquent amounts are now due, together with accruing late charges and interest, unpaid and accruing taxes, assessments, trustee’s fees, attorney’s fees, and any amounts advanced to protect the security associated with this foreclosure and that the beneficiary elects to sell or cause the trust property to be sold to satisfy said obligation.

Date: October 21, 2002

**FIRST AMERICAN TITLE COMPANY OF IDAHO, INC.**

By Elishia M. Ricky, Trust  
Officer.

11/6,13,20,27/02

### OWYHEE COUNTY BOARD OF COMMISSIONERS MINUTES FOR TUESDAY, NOVEMBER 12, 2002 ANNEX BUILDING, MURPHY, IDAHO 9:30 AM

Present for the meeting were Commissioner Hal Tolmie, Commissioner Dick Reynolds, Commissioner Chris Salove, Clerk Cynthia Eaton, Clerk Elect Charlotte Sherburn, Sheriff Gary Aman, Treasurer Barbara Wright, Assessor Ernie Bahem, Assessor Elect Brett Endicott, Emil Drzayich, Jr., Bill Camron, Phil Pickett, Linda Charters, Kay Kelly-Breach, Jim Desmond, Fred Grant, Joe Aman, Cheryl Peterson, Chris Collett, Mark Anglin, Janet Anglin, Kelli Moore and Ron Race.

The Board amended the agenda to include signing the requested liquor licenses for the month of November.

The Board approved the Quarterly Report presented by the Treasurer.

The Board reviewed the T-1 Internet Service presented by Computer Arts. Emil Drzayich Jr. and Bill Camron representing Computer Arts reported that the T-1 would allow the county system to be analyzed by computers in the Computer Arts Office without making a trip to Murphy and thus cutdown on money spent in travel to make adjustments. Phil Pickett represented the telephone equipment company that installed the system telephones. He reported that the system would be capable of utilizing the T-1 line. He reported that 9 lines would be needed to operate the E-911 system leaving 14 lines available to the other users within the courthouse. The Board directed that Computer Arts present a written proposal to the Elected Officials and the Elected Officials present a recommendation to the Board on the pros and cons of the proposed implementation; the need for the T-1 service; and alternatives to the T-1 service.

Owyhee Natural Resources Committee Director, Jim Desmond discussed actions taken by Al VanVooren at the Sage Grouse Committee meeting. Mr.

VanDooren’s attempted to insert the authority of the Fish and Game into the Sage Grouse Local Working Group in direct conflict with the premise that the Local Working Group was formed to resolve issues at the local level. The Board directed the co-chairmen John Romero and Donna Bennett of the Local Working Group to write a letter to the Fish and Game addressing the matter.

The Board moved into Executive Session with the Building Inspector. The Board moved from Executive Session and requested that another Executive Session with the Building Inspector be scheduled for Monday, November 18, 2002 at 11:00 am.

Indigent and Charity Case 02-30 Board approved release of lien; Case 02-26 Board heard the case admitting Exhibits 1 through 4, neither the applicant or the hospital representative appeared for the hearing and the case was denied for lack of evidence as to medical indigency.

The Board reviewed and signed the November requests for Liquor License renewal.

Mark and Janet Anglin discussed the Poison Creek Road situation with the Board. The Board had received information that a gate across the access had been placed and locked. The Anglins expressed concern for privacy and security as the basis for the locked gate and stated that there is an alternative route accessing the federal lands. The Anglins stated that access through the locked gate is offered upon request to ranchers who graze in the area. The Board made no decision on the information at this time.

The Board convened to canvass the votes for the General Election of 2002. The Board verified that the election figures were correct as reported with the following corrections: North Homedale count for Jerry M. Brady was corrected to 156, North Marsing count for Mike Ihler was corrected to 75, and the Absentee count for Magistrate Retention was corrected to 109. The Board certified the 2002 General Election with the indicated corrections.

There being no further business, the Board adjourned.

Signed this 18th day of November 2002.

Hal Tolmie, Chairman of the  
Board  
Attest:

11/27/02

### NOTICE OF CALL FOR BIDS

Owyhee County will be accepting a 3-year municipal lease bid on two (2) year 2003 1/2 ton 4x4 pickups. All vehicles must meet or exceed the required equipment list.

Owyhee County will make 3 annual payments on the total vehicles if bid from the same company. The first payment will be within 30 days of delivery of the vehicles and annually thereafter. Vehicles must be delivered to within 50 miles of Murphy. All vehicles will be inspected prior to Owyhee County taking delivery.

All vehicles shall have the standard manufacturer warrant(s) for parts and labor for a minimum of 36 months and/or 36,000 miles. Defects, hidden body damage caused in transit, items failing to meet specifications, and other such items found after delivery shall be the responsibility of the successful vendor to correct at their expense. Warranty shall activate upon the date the vehicle is placed “in service”.

All vehicles shall be serviced and inspected by the dealer and an inspection sheet shall accompany the vehicle. All fluids shall be filled to the manufacturers recommended levels and the gas tank shall contain a minimum of 1/4 tank of gasoline.

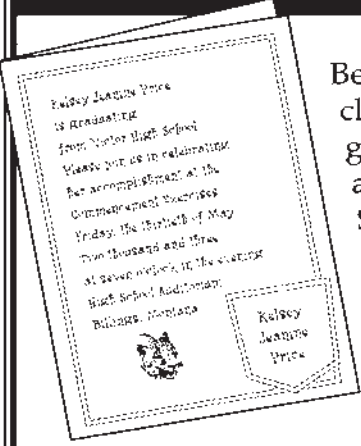
Heavy Duty means the item shall exceed the usual quantity of quality or capacity supplied with the standard production models and shall be capable of withstanding unusual strain, exposure, temperature, wear, and use.

Sealed bids must be delivered to the Owyhee County Sheriff’s Office c/o Gary Aman no later than 12/13/2002. Bids will be awarded on 12/16/2002.

Vehicle specifications may be seen at the Owyhee County Clerk’s office of by calling the Owyhee County Sheriff’s Office at 495-1154.

11/13,20,27/02

## Graduation Announcements by stylart™



Be at the top of the class with classy graduation announcements by Stylart. We also carry a complete line of graduation accessories.

*Come in today!*

Many announcements include photos!

## The Owyhee Avalanche

337-4681



# Looking back...

from the files of The Owyhee Avalanche and Owyhee Chronicle

## 25 years ago

November 24, 1977

### Snow blankets valley

The first snow storm of the season hit the valley Saturday morning, causing slick roads, which in turn, put many motorists in the ditch.

Football fans traveling to Boise Saturday witnessed dozens of cars off the freeway, due to ice and snow. Closer to home, the hill three miles east of Homedale on the Homedale Road was especially tricky, putting many motorists in a ditch and off the road. Some of the victims were fans on their way to championship game.

Service stations were “snowed under” with customers wanting snow tires. For some, it was Tuesday before drive-in customers could get winter tires put on without waiting in line.

Wind and snow continued to plague motorists Monday and Monday night, with about six inches on the ground Tuesday morning.

Business establishments reported “business as usual” with little effect by the weather on sales.

### Trojans win a A-3 championship title

Brett Tolmie caught the kickoff ball and ran it all the way—82 yards—to score the first six points for the Homedale Trojans in the A-3 championship game Saturday at BSU’s

stadium. The Trojans went on to win the title 31-13 from West Jefferson.

The excited Homedale fans again saw Tolmie, and again in the first quarter steal another six points with a 46 yard run. With Pearson’s extra point after the first TD, the first quarter ended 31-0.

The early part of the game bore a resemblance to ice hockey, with the slippery astroturf being coated with the winter’s first snow. Players were slipping and sliding, falling, and skating on the unfamiliar ball field.

Tolmie’s first-play score gave the Trojans a mental win, and at the same time seemed to defeat the suprised West Jefferson team. Homedale’s line hit hard, and kept the Trojans way out on the scoreboard.

### Voters to decide bond issue

MARSING—On December 15 Marsing’s school board will ask voters to approve a 998,000 bond issue for a new middle school and gym and for the purchase of land south of the present elementary school as a building site.

The election date, amount of bond issue and site location were decided at a recessed meeting last week after board members spent two hours mulling over figures and alternatives.

The board met again in recessed session to sign legal papers advertising the bond issue and to discuss funding help for tiling the drain ditch which runs through school property.

### ‘round Homedale

Visitors at the Senior Citizen Nutrition Dinner last Tuesday were Laura Fisher, Bertha Boehm, Lillian Crawoford, Vi Burt, Ann Heggeler, Nora Johnson, Dorothy Bradley from New Plymouth; Lillie Jones, Grace Hylton, Nell Thomas, Janet Fox of Cambridge; Leona O’Brien, Nampa; Myrtle Ericson and Robert Ericson from Denver; Kathren Jaeger, Grace Hall, Mildred Stevenson and William A. Stevenson.

Dottie, Kenny and Roger Beavers, Caldwell visited her mother Mrs. Arthur Goodloe last Tuesday evening.

Vickie Goodloe, Arthur Goodloe’s granddaughter from Denio, Nev.; Buna Chambers, Mrs. Goodloe’s daughter from Caldwell; Mike, Lina Seimo and Thomas Michael from Wooddale, Ill., visited Mr. and Mrs. Arthur Goodloe last Thursday evening. Lina is Mrs. Goodloe’s granddaughter.

## 50 years ago

November 27, 1952

### Chamber elects new 1953 officers

A. E. “Spud” Murphy was elected president of the Homedale chamber of commerce at a meeting of the board of directors at the Lewis Bean home Monday night. Others elected to offices were Elmer Elliott, vice president; Elwood Gough, secretary; and Ralph Thompson, treasurer.

The board discussed plans for the forthcoming chamber of commerce annual banquet which will be arranged under the chairmanship of Lewis Bean. Other projects which are to be undertaken were discussed at length by the board members. Other members of the board are Allen Sircin, Russell Hamm, Virgil Kindred, Lewis Bean and Forrest Brown. L. C. Pace is retiring the president of the club.

### Club organized

A 4-H Club was organized recently in the Three Creek community. Owyhee County Agent, J. V. Briggs, organized the club with the following officers and members: Ronda Patrick, president; Dee Patrick, vice president; Joan Brackett, secretary; and Ann Brackett, reporter. Other members are Bert Brackett, Kenny Blick and Johnny Hullinger. Mrs. George Clark is the 4-H Club leader.

### Open House set at grade school

There will be an open house at the new grade school on Monday evening, Dec. 1<sup>st</sup> from 7 p.m. until 10 p.m. the teachers of the grades in the new building will be on hand to welcome visitors and show the rooms. The P.T.A. will have lots of good pies and coffee for sale, the proceeds going to help pay for the stage curtain. It is hoped that all of Homedale will turn out to see the beautiful new building and enjoy the refreshments.

### Marsing School

Most of the English students (Paul Bitzer’s classes) wrote very good imaginary short stories from 850 to 100 words inlength.

Prose fiction includes all kinds of stories except plays or the drama and stories in verse. The two main divisions of prose fiction are (1) the novel or the long story and (2) the tale and the short story.

The three parts of a story are (1) the ploy (2) characters and (3) setting. By the setting is meant the time and place. The essential thing in every plot is action, usually struggle of some sort.

Students preparing excellent stories, receiving 200 points of credit for this assignment are as follows:

Dolores Ann Axtell, Lois Mae Axtell, Donn Bish, Rita Bish, Dick Buxton, Brent Clapier, Carol Copley, Harold Dawson, Donna Dines, Clyden Eells, Dale C. Ellis, Eleanor Fuller, Mackey Gaines, Verlyn Gaines, Herbert Gibbens, Patricia Goodson, Teddy A. Greer, Geraldine Hale, Dona D. Hazen, Connie Hill.

Lee Haumann, Rodney Hawes, Jr., Evalyn Hunt, Josephine Landa, Glenda Lankford, Belva Larsen, Beverly Larsen, Arlene LaRue, Dan McClintick, Paul McKague, Wayne Maggard, John Mahler, Helen Martin, Phil Martin, Charles Mitchell, Joyce Muldoon, JoAnne Paine, Benny Panzeri, Molly Panzeri, Jeans Peterson.

Maynard Reich, Ray Simmons, Jim Starr, Purvis Starr, Mary Subia, Carol Summers, Steve Symms, Carmen Usabel, Valerie Vostrez, George Watson, Iris Werre, Helen Wilson.

#### History of Mail

School and College Service, United Air Lines, San Francisco, sent the high school a set of excellent wall pictures “History of Mail.” The pictures give the student an idea of how mail was delivered from about 3800 B. C. to the present day.

## 137 years ago

February 26, 1870

WHY don’t our musicians rally and organize a brass band? Surely there must be instruments enough remaining from the two bands that were in existence here two years ago, to get up a credible company. We know that there are a sufficient number of capable musicians in Silver, if they would only take the matter in hand.

\*\*\*

FEMALE PUGILISTS.—One evening this week be observed two frail females in the vicinity of Catalow’s stable, engaged in committing assault and battery upon each other. For some time the fur flew in all directions. They finally sank down in the snow through sheer exhaustion. Jealousy was the cause of the muss.

\*\*\*

GENERAL SCULLY reports to the Indian Bureau that 740 Gros-Ventures on the Fort Browning Reservation, Montana, have died of small pox since last September. Only 1200 of the tribe are left alive.

\*\*\*

THE Owyhee Co’s Mill is pounding away night and day on Golden Chariot rock. It is encouraging to see the large amount of bullion that is being produced.

\*\*\*

OWYHEE BULLION.—From a statement in a San Francisco paper, we learn that \$25,700 worth of Golden Chariot bullion and \$21,000 of Ida Elmore’, reached San Francisco last month.

\*\*\*

IN the San Francisco Stock and ExchangeBoard, Feb. 12<sup>th</sup>, Golden Chariot stock was quoted at 14 bid to 16 asked; Ida Elmore 10 bid to 25 asked.

\*\*\*

JOHN McGonigle is in town, packing up his printing material for immediate transportation to Boise City.

\*\*\*

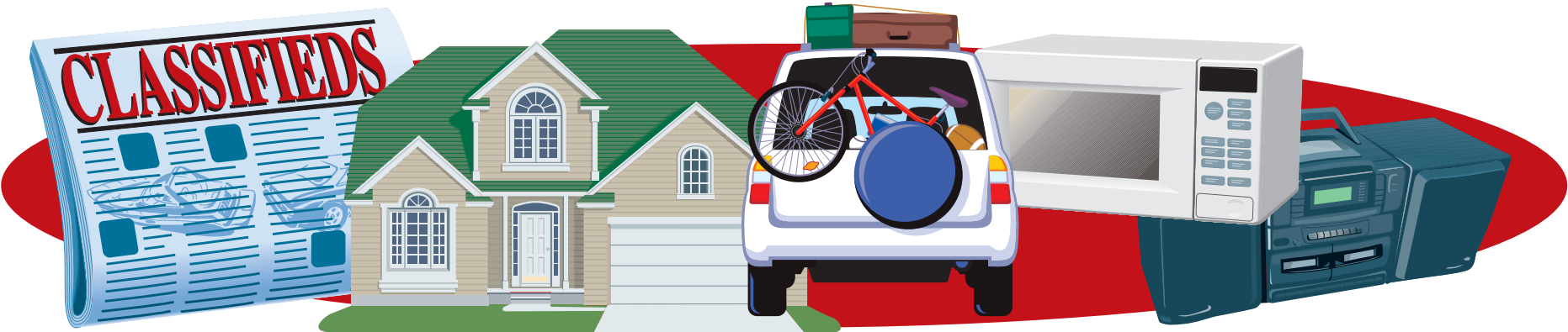
SEMI-WEEKLY News.—Such is the title chosen for a new semi-weekly soon to be started in Boise City by john McGonigle, formerly editor and proprietor of the AVALANCHE. The News will be a twenty-four column paper, something larger than the Idaho World, and like the latter, strongly Democratic in its views and teachings. Mc. has purchased the Tidal Wave material of the Butler Bro’s, and we congratulate him upon the possession of one of the most complete and extensive printing establishments in the country. There has long been a necessity for a respectable Democratic journal at the Capital, and judging from the past efforts of the editor of he News, his party may confidently expect to find in him a valuable assistant in the wider field to which he goes forth to labor. Mc., financially, may you have unbounded success.

\*\*\*

JUDGE LEWIS.—The bar and citizens generally or Owyhee county will heartily endorse what the Statesman says of Judge J. R. Lewis of the Third Judicial District:

The Attorney general has expressed to several different Idaho men now in Washington, as well as others not from this territory, his high appreciation of Judge Lewis’ abilities as a judge and his conduct in general since he assumed the duties of his office in Idaho. This must be all the more gratifying to the judge when he knows, as he does know, that the sentiments of the Attorney General are shared by the people of Idaho. The opinion of the people and the bar of Idaho is that he is an upright, competent Judge and an agreeable sociable gentleman; an ornament to society and an honor to the bench. To this there is no dissent. Whatever of prejudice existed in the popular mind against carpet-baggers because they came here with commissions in their pockets, is, we are happy to say, in Judge Lewis’ case, entirely worn away by his straight-forward attention to his duties and devotion to the interest of the people here.





# Rubber Stamps

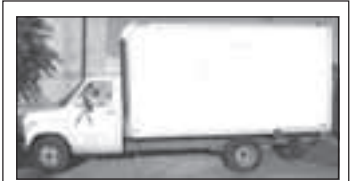
Made to order

## The Owyhee Avalanche

337-4681

### VEHICLES

1992 F-250 4x4 extended cab, loaded, A/T, 7.3 diesel, asking \$5800. Call 896-5070.



1989 Ford delivery van.  
V-8, auto. 14-foot box.  
\$4,950.00  
Owyhee Publishing,  
Homedale. 337-4866

For FAST results... try the  
Classifieds!

### HELP WANTED

CNA needed in Home Care, must be caring and dependable, for info Ph: 337-5343.  
Extra Income \$250-\$500 a week helping the U.S. Government, file, HUD, FHA, mortgage refunds, no experience necessary, will train to work at home call TPI Research 1-800-589-8891.

Buy it, sell it,  
trade it, rent it...  
in the  
Classifieds!

# HELP WANTED

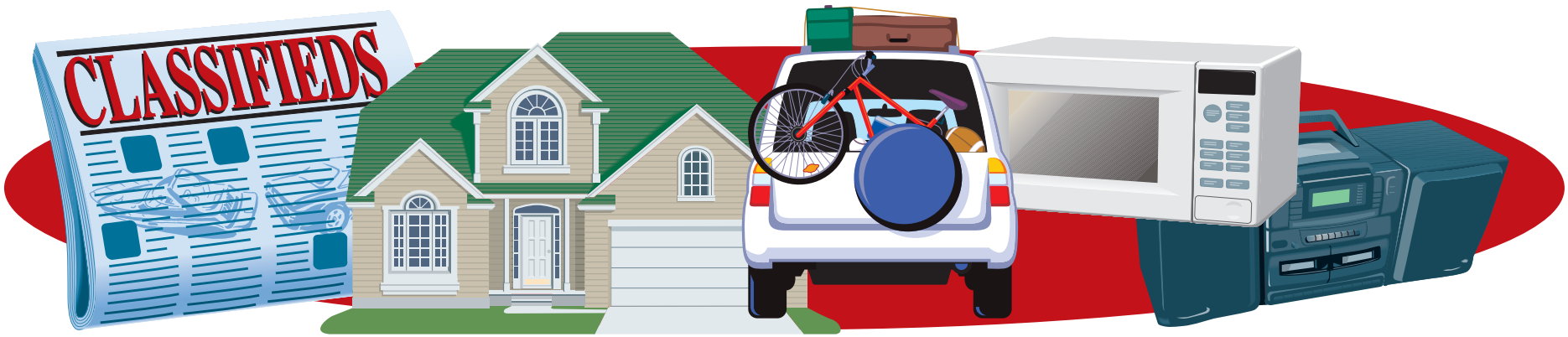
## Rural Addresser

people-friendly, able to work evenings and weekends.  
Call Gary Aman 495-1154  
or  
Chris Salove 896-4162

# THE BUSINESS DIRECTORY

|  |   |  |  |   |
|--|---|--|--|---|
| <b>CERTIFIED LOCKSMITH</b><br><b>HARVEY'S AUTO PARTS</b><br><b>LOCKSMITH &amp; TOWING</b><br>KEYS MADE • LOCKS REPAIRED<br><b>EMERGENCY OPENINGS</b><br>211 MAIN ST.<br>MARSING, ID • 896-4643                             | <b>ELECTRICIAN</b><br><b>H&amp;H ELECTRIC</b><br>Serving Owyhee County for 25 years<br><b>Jeff Haylett</b><br><b>337-4881</b>   | <b>SIGNS &amp; BANNERS</b><br><b>Allied Sign</b><br><small>INCORPORATED</small><br>Banners, Windows & Vinyl<br>Located in and Serving all of Owyhee County.<br>Also serving Canyon & Malheur Counties<br><b>337-6215</b><br>UPS SHIPPING   | <b>SAND &amp; GRAVEL</b><br><b>Owyhee Sand, Gravel &amp; Concrete</b><br><b>337-5057 • 337-4597</b><br><b>208-573-2341 • 208-573-2343</b><br><b>HOMEDALE, IDAHO</b><br>ALL TYPES OF ROCK & DIRT<br>STATE CERTIFIED DRAIN ROCK<br>FREE ESTIMATES ON ROADS & DRIVEWAYS<br><i>Chuck, Ray &amp; Bill Maxwell</i> | <b>CARPENTRY</b><br><b>Harris Carpentry</b><br>General Carpentry<br>Addition - Remodel<br>Decks - Repairs<br>Shop - Storage<br><b>Marsing, Idaho</b><br><b>896-4632</b> |
| <b>HEALTH CARE</b><br><b>THE CLINIC AT WILDER</b><br><b>RENEE KINDLER, FNP</b><br>215 3rd St., Wilder<br>Ph - 482-7430<br>After Hrs - 208-327-8016   | <b>SIDING CONTRACTORS</b><br><b>MGM Siding Contractors</b><br><i>William T. Bruce</i><br>1024 W. Finch Dr.<br>Nampa • 465-0214 • Fax 465-9831<br>Vinyl, Steel & Aluminum Siding<br>Vinyl Windows<br><b>GALCOA Master Contractor</b><br>Craftsmanship You can Trust          | <b>AUTO REPAIR</b><br><b>River Country</b><br><b>TRUCKS, CARS &amp; 4X4'S</b><br>SALES AND REPAIRS<br>DIAGNOSTICS • FUEL INJECTION • COLLECTOR CARS<br>COUNTRY PRICES • NO CREDIT OK • BUY HERE, PAY HERE<br><b>932 MAIN • P.O. BOX 338 • MARSING, IDAHO</b><br><b>208-896-4530</b>                  | <b>AUTO SALES</b><br><b>HOMEDALE CHIROPRACTIC CENTER</b><br><br>J. Edward Perkins, Jr. D.C.<br>111 S. Main<br><b>337-4900</b>  | <b>CHIROPRACTIC</b>   |
| <b>ADVERTISING</b><br><b>YOUR AD HERE!</b><br><b>\$10.00 PER WEEK</b><br><b>OWYHEE AVALANCHE</b><br><b>337-4681</b>  | <b>ADVERTISING</b><br><b>YOUR AD HERE!</b><br><b>\$10.00 PER WEEK</b><br><b>OWYHEE AVALANCHE</b><br><b>337-4681</b>   | <b>BED LINERS</b><br><i>Quality work from start to finish</i><br><b>Auto Body by Alan</b><br>Auto Glass • Frame & Unibody Repair • Collision Repair • Custom Paint • All Work Guaranteed<br><b>Alan Bahem</b><br>Rt. 1, Graveyard Pt. Rd.<br>Homedale, ID 83628<br>(208) 337-4837<br>Mobile 250-4837 | <b>AUTO BODY</b><br><b>BOWEN &amp; PARKER</b><br>C.P.A.'s<br><b>Mikeal D. Parker, CPA</b><br>• 4 West Owyhee • P.O. Box 905 • Homedale, ID 83628 337-3271<br><b>Ron V. Bowen, CPA</b><br>• 624 16th Ave S. • P.O. Box 41 • Nampa, ID 83653 467-6900  | <b>ACCOUNTING</b>   |
| <b>HOME CARE</b><br><i>A Special Touch</i><br><b>Home Care, Inc.</b><br>In <u>YOUR</u> Home Care<br>Licensed Staff • Medicare<br>Medicaid • Private Pay<br>216 W. Idaho PO Box 933<br>Homedale, ID 83628<br>(208) 337-5343 | <b>SPORTING CLAYS</b><br><b>IDAHO SPORTING CLAYS</b><br><b>337-4826</b><br>3 Miles south on Hwy. 95 from Homedale, turn West on Graveyard Point rd., go 4 miles and turn South on Sage. Go over the first hill and we're on the left.<br><b>GIFT CERTIFICATES AVAILABLE</b> | <b>HEALTH SERVICES</b><br><b>Homedale Clinic</b><br>Terry Reilly Health Services<br><b>Richard Ernest, CRNP</b><br>Family Nurse Practitioner<br><b>Kate Ryan, M.D.</b><br>108 E. Idaho, Box 1058<br>Homedale, Idaho 83628<br><b>337-3189, Night 466-7869</b><br>Additional hours Tuesday evenings    | <b>HEALTH SERVICES</b><br><b>Marsing Clinic</b><br>Terry Reilly Health Services<br><b>Faith Young Peterson, CRNP</b><br>Family Nurse Practitioner<br><b>Penny Beach, M.D.</b><br>201 Main Street, Marsing, Id. 83639<br><b>896-4159, Night 466-7869</b><br>Additional hours Thursday evenings                | <b>CHIROPRACTIC</b><br><b>MARSING CHIROPRACTIC</b><br>Joe Succorri, D.C.<br>Adjustments From \$20<br>Special Attention to Injuries<br>Tele: 208-896-5520                |





**THOMPSON ROAD - THIS COULD BE THE BUY OF THE YEAR!**  
Owner says they would look at anything reasonable, even a LEASE OPTION TO BUY! 3 bedrooms, two car garage on 12 acres! Near Homedale. Call Pete 890-1658

**315 WEST MONTANA, HOMEDALE**  
Well cared for 2bd/1ba home in town. Upgrades include newer carpets, vinyl siding and windows, fenced back yard. \$56,900 #98109352 Call Pete 890-1658

**RT. 1 BOX 1064, JUMP CREEK BIG 310X160 ARENA, 5 ACRES**  
A nicely remodeled with mature trees. Ship and lots of pasture. Home has 2337 sq ft with 4 bedrooms. Big living room and great country kitchen.  
# 98114131 Call Pete 890-1658

**2603 HWY 19 - GREAT VIEWS**  
1 acre nice 3 bedroom 2 bath home with good storage shed. Only \$79,900  
#98100006 Call Pete 890-1658

**See these and other properties I have for sale at**  
**www.AgTeamAdvantage.com**

**DESERT HIGH**  
REAL ESTATE  
928 MAIN ST. • MARSING  
www.deserthighrealestate.com

Betty Stappler 941-1020  
Soila Contreras 896-5136 Se Habla Español  
Lori Rasmussen 337-4593 • 861-9192  
Dawn Whitney 337-4817 • 989-1870  
Jack Prater 724-3009

**(208) 896-4624**

|   |  |
|---|--|
| <b>ATTENTION SMART INVESTORS!</b><br>This 1 Br home on a nice lot will bring you \$325/mo for only \$35,000. Not a bad deal!!   | <b>RETAIL SPACE</b><br>2500 sq ft building in Homedale's downtown. It has been used as a retail store, could be office space. Priced right at \$45,000 |
| <b>WILDER VALUE PROPERTY</b><br>If mature trees and a kid friendly yard are what you are looking for, here it is.<br>This 3 Br. home is priced at \$63,000  | <b>LARGE CAPACITY HOME</b><br>Over 2500 sq. ft. of comfort on 4 city lots. Great views of the river. \$114,900   |
| <b>CUTE, COZY &amp; COMFORTABLE</b><br>This 2 or 3 bedroom, 1 or 2 bath home is within walking distance of Homedale's business district. It could be a great rental or a project for a person with a vision.<br>Priced to sell @ 49,500 | <b>CONVENIENCE PLUS</b><br>Over 1800 sq. ft. of lovely home on an acre near Marsing. \$114,500   |
| <b>VIEW VIEW VIEW</b><br>Spectacular view of the Owyhees from this secluded 18 acre lot outside of Wilder. Just listed at \$72,000  | <b>OREANA ACREAGE</b><br>Large home with shop on 2 acres. \$70,000 Owner Will Carry.   |
|   | <b>FIXER UPPER</b><br>3 bedroom home in Marsing needs a "make over"  |

**Licensed in Idaho and Oregon**

**COLDWELL BANKER**

**ASPEN**  
GEORGE WILSON  
JOE SACCOMAN • JOHN CONTI

896-5312 • 890-4770 • 880-7829  
View Properties At: [www.idaholand4u.com](http://www.idaholand4u.com)

**RESIDENTIAL WITH 12 RENTAL UNITS**  
-Room for Expansion up to 30 units- 6 year old 3BR/2BA Home, 20X20 shop & 2 car garage. 333' frontage on HWY 78. Great Retirement Property.  
**\$170,000**

**REBUILT STARTER HOME**  
3 bed, 1 bath. Fenced yard, new paint, carpet. Near Town. \$84,000

**SUPER VIEW**  
2400 plus sq. ft. 4 bed, 2 bath. Large great room, sun room. View of Snake River. Hilltop. Upgraded electrical. 10' ceilings. \$264,000

**HORSE LOVERS HEAVEN**  
3 bdrm., 2 bath, oversized kitchen, skylight, vaults, pantry, 1404 sq. ft. home 140'X80' arena, 58'X30' steel barn, steel corrals, 4 bay, 48X20 metal shop & garage . All on 5.63 Acres. \$164,900

**UPGRADED SUBDIVISION: LARGE ACREAGES!**  
2.2 Acres underground utilities, paved road, great view of the valley. Partly fenced **\$28,500**  
6.3 Acres located just outside Marsing overlooking the whole valley, underground utilities and paved road. **\$51,900**  
2.16 Acres Fenced. Irrigation. With utilities **\$26,500**

**5 YEAR NEW HOME ON 5 ACRE VIEW PROPERTY**  
With great view of Owyhee Mountains & river. Fenced for stock. Pasture, Shop, 2 car garage. Many Extras **Melba \$164,900**

**OWNER CARRY - 6 ACRE BUILDING SITE**  
Live water, trees, fenced, pressurized irrigation. **\$59,000 - \$5K Down**

**4 BEDROOM 2.9 ACRES**  
28X36 Shop • 220 Volts • Fenced Pasture • Auto Sprinklers  
Beautiful Open Floor Plan 1890 sq. ft. \$169,500

**REAL ESTATE**

**BY OWNER** for sale building lots with a view 2.25 acres to 1.75 acres lots, with power, phone and irrigation. Call Charlie 337-5990 or 250-4937.

**MOBILE HOME** in nice park. \$2000 down OAC. 401 S. Main, Sp 10. Homedale 337-5804 or 884-1700.

**SOMETHING FOR EVERYONE!**

- \* **SUPER COMMERCIAL BUILDING & LAND.** Property produces an income and there is still a 24x48 section of the building vacant. Great Opportunity!
- \* **OUTSTANDING 57 ACRE PARCEL.** Irrigation, views, secluded, Wonderful building sites. Well suited for cattle, most any kind of crop or both. Year round creek borders Property. !!!Price Reduced!!!
- \* **28 ACRES** 2 to 5 lots possible - New Plymouth
- \* **300 ACRES W/ PIVOT, HOME & OUTBUILDINGS** - Rupert Area
- \* **3000 PLUS ACRES,** Homes, Shops, Pivots, & Wheel lines. Gooding/Shoshone Area
- \* **LARGE A-FRAME CABIN** 2 kitchens, 2 fireplaces, view of the Sawtooths on 1.5 Acres. Between Stanley & Sun Valley.

**MOST PROPERTIES HAVE OWNER CARRY TERMS.**

**If you have tried the rest, why not try one of the best?**

**AT YOUR SERVICE 8 DAYS A WEEK, 36 HOURS A DAY!**

**BRUCE JEPPERSON**  
**337-3238 or 724-0018**

MIKE GAMBLIN  
REAL ESTATE

**FOR SALE**

**USED TRACTOR PARTS**  
1000's of salvaged farm tractors and combines. Nampa Tractor Salvage, 9055 Hwy 20, Nampa, ID 83687. (208) 467-4430.

**ROLL ENDS:** Great for packing material, building fires, lining bird cages or for your kids to doodle on. The Owyhee Avalanche, Homedale.

**BED-QUEEN PILLOW-TOP MATTRESS SET,** brand new, still in plastic. List \$700, sacrifice \$165. Queen orthopedic set, brand new. Value \$550, sacrifice \$135. 208-866-7476.

**Apples and Apple Cider.** Call Robison Fruit Ranch, Sunny Slope 459-7987

**KING-SIZED PILLOW** top mattress set. New, in bag, with warrenty. Value \$850, sacrifice \$235. 208-866-7476

**Weiner pigs** for sale call 337-5778.

**Alfalfa Hay** 2<sup>nd</sup> and 3<sup>rd</sup> cutting small bales \$75 a ton please cal after 7:00 337-3471.

**Pellet** Stove/ Miller Welder. Call 337-6284.

**FREE Border collie/german** shorthair puppies to a good home call 337-5587.

**FREE** 1 full size box springs and mattress. Call 337-3610.

**SERVICES**

**JJ Excavation and Hauling,** TOP SOIL, and gravel delivery, excavator and trucks for hire. Road building, dozer, water truck and road grader. Free estimate. 208-337-4822 or 573-5700.

**FUN PIANO LESSONS:** Never too young; never too old. All ages and levels, home schoolers and learning disabilities welcome. Reasonable rates. 467-6244.

**Wilson Tractor Service:** road repairs, landscape grading, weed mowing, small acreage specialty, quality custom concert, and dependable service. Call Charlie Wilson. 250-4937, 337-5990

**Dump Truck & Backhoe service,** ditch cleaning & demolition. Call Steve at 465-5196 or 371-4285

**Technical computer cleaning,** an on-site computer cleaning service. Call Tom or Colette Kudlo at 208-896-4676.

**Horse training** and colts started by Bruce Rueck, 30-yr. experience, and gentle methods, roundpen and outside riding. \$350 mo. includes quality feed produced on site. Riding lessons available for all ages. Excellent with kids. 337-5914.

**Web page design:** Basic, 3 pgs to 300, bookkeeping call Becki 337-5844.

**THANK YOU**

The Family of Ross McAbee wishes to thank all those, who sent flowers, food, and donations and helped in any way. We wish to thank all churches and people that prayed for us in our loss. Velmer (Butch), Diana McAbee and families, Gardner families.

A great Thank you to the Entire Staff of Owyhee Health and Rehab for all your excellent care and the wonderful way you cared for my aunt "Laura M. Gates", and thanks fo my friends and family for all of your love and support. Words cannot describe how much I deeply appreciated everyone. Cristy Lee.

Happy Thanksgiving, we want to thank everyone for their help in making our Oct. Scholarship Breakfast a success. Silver City Masonic Lodge #13 Homedale, Idaho.

Have a news tip?

Call us!

**337-4681**

**WANTED**

Ducks of any kind. Have pond. Can trade chickens for ducks. Call 896-4671.

**FOR RENT**

**At Pioneer Mobile Home Park,** large lot in country park 2 miles from Homedale. Home must be 1990 or newer. Trash/water/septic tank paid. \$165/mo +\$165/ deposit. Space also has a dog kennel. 208-337-4589.

**Small 2 bdrm** in country. Homedale School district. NO SMOKING, NO PETS Cleaning Dep., References req'd. PH: 482-7552 after 6 p.m.

**2 bdrm. house** with basement \$500. Plus deposit. In Homedale call 337-4980.

**Homedale,** 3 bedroom, 2 bath home, w/appls, central a/c, fenced yard, yard care, no pets; \$550/mo +dep.; 337-5066.

**3 bdrm.** 1 bath \$550/mo. NO SMOKING, NO PETS, call 337-3030.

**5<sup>th</sup> wheel** \$250/mo. plus \$300 deposit call 337-3030.

**HOMEDALE GARDEN APARTMENTS**

FOR SENIOR CITIZENS and/or HANDICAPPED OR DISABLED PERSONS

**RENT BASED ON INCOME**  
USDA/RURAL DEVELOPMENT FINANCED

GIVE US A CALL: (208)337-4715  
409 SOUTH FIRST WEST  
HOMEDALE, IDAHO 83628

**AVAILABLE**  
**10 NEW STORAGE UNITS - 10'X10' BOAT & RV STORAGE SPACES**

**MARSING STORAGE, INC.**  
**CALL 867-2466 OR 343-9855**

**SPACES FOR RENT**  
**HOMEDALE'S NICEST MOBILE HOME PARK**

- Spacious single or double wide spaces
- Convenient to shopping, schools & city services
- Clean, quiet family park
- On site manager
- Water/Sewer/Trash provided
- Cable T.V. Available
- Will accept older homes in good condition

(We also have mobile homes for sale ready to move into NOW with low down payment)

**Sunset Village**  
**Mobile Home Park**  
401 S. Main • Homedale, Idaho  
**See managers space #42**  
**(208) 337-5804**  
or 884-1700





# Snake River Mart



MARSING, IDAHO

HOURS: Mon. - Sat. 6:00 a.m. to 10:00 p.m. - Sunday 7:00 a.m. to 9:00 p.m.

|  |  |   |  |
|--|--|---|--|
| <div>Lean Ground Beef</div> <div></div> <div>\$1.59 lb.</div>                 | <div>Fresh Whole Pork Picnic Roast</div> <div></div> <div>79¢ lb.</div>                       | <div>Golden Ripe Bananas</div> <div></div> <div>3 lbs. for \$1</div>   | <div>Large Head Cauliflower</div> <div></div> <div>99¢ ea.</div>        |
| <div>Boneless Petite Sirloin Steaks</div> <div></div> <div>\$1.99 lb.</div> | <div>Western Family Jumbo Meat Franks</div> <div></div> <div>2 \$1 for 16 oz. Package</div> | <div>Jumbo Yellow Onions</div> <div></div> <div>5 lbs. for \$1</div> | <div>Large New Zealand Avocadoes</div> <div></div> <div>69¢ ea.</div> |
| <div>Gold-N-Plump Leg Quarters</div> <div>\$2.99 ea.</div>   | <div>Market Pack Mild Cheddar Cheese</div> <div>\$1.99 lb.</div>   | <div>18 oz. Concord Carmel Apple Dip</div> <div>\$1.99 ea.</div>  | <div>Choice Lemons</div> <div>7 for \$1</div>  |
| <div>Boneless Pork Loin Chops</div> <div>\$1.79 lb.</div>  | <div>12 oz. Falls Brand Chopped Ham</div> <div>\$2.29 ea.</div>  | <div>12 oz. Dole Greener Select Salad</div> <div>\$1.39 ea.</div>   | <div>Zucchini Squash</div> <div>69¢ lb.</div>  |
| <div>12 oz. Oscar Mayer All Meat Bologna</div> <div>99¢</div>  | <div>12 oz. Pkg. Western Family Sliced Bacon</div> <div>\$1.99 ea.</div>   | <div>16 oz. Bag Baby Carrots</div> <div>99¢</div>   | <div>Choice Navel Oranges</div> <div>49¢ lb.</div>   |

|  |   |   |  |
|--|---|---|--|
| <div>American Beauty Egg Noodles</div> <div></div> <div>79¢</div> <div>12 oz. Package Asst'd.</div> <div>8.5 oz. Jiffy Corn Muffin Mix</div> <div>3 for \$1</div> | <div>Maruchan Cup-O-Noodles</div> <div></div> <div>3 for 89¢</div> <div>2.25 oz. Asst'd.</div> <div>32 oz. Western Family Saltine Crackers</div> <div>\$1.49</div>           | <div>Nestle Semi Sweet Morsels</div> <div></div> <div>2 \$3 for 12 oz. Package</div> <div>18.25 oz. Asst'd. Duncan Hines Cake Mix</div> <div>99¢</div> | <div>All Varieties Pepsi Products</div> <div></div> <div>\$2.99</div> <div>12 Pack Cans</div> <div>12-12 oz. Bottles Miller or MGD Beer</div> <div>\$7.49</div> |
| <div>Mardi Gras Paper Towels</div> <div></div> <div>69¢</div> <div>1 Roll</div> <div>86 ct. Western Family Facial Tissue</div> <div>79¢</div>                     | <div>Western Family Hi-Pro Dog Food</div> <div></div> <div>\$9.99</div> <div>37.5 lb. Bag</div> <div>13.2 oz. Asst'd. Western Family Can Dog Food</div> <div>3 for 89¢</div> | <div>Starkist Chunk Tuna</div> <div></div> <div>59¢</div> <div>6 oz. Oil or Water</div> <div>12 Roll M.D. Bathroom Tissue</div> <div>2 \$5 for</div>   | <div>Doritos Tortilla Chips</div> <div></div> <div>\$1.89</div> <div>Asst'd.</div> <div>24 oz. Eddys Buttermilk Bread</div> <div>\$1.89</div>                   |

ONE COUPON PER VISIT - PER ITEM ONLY. THANK YOU!!

|  |  |  |  |
|--|--|--|--|
| <div>5001 COUPON</div> <div>Duncan Hines Cake Mixes</div> <div>79¢</div> <div>Limit 2 Expires 12/03/02</div> | <div>5002 COUPON</div> <div>Western Family Hi-Pro Dog Food</div> <div>\$8.99</div> <div>37.5 lb.</div> <div>Limit 2 Expires 12/03/02</div> | <div>5003 COUPON</div> <div>Doritos Tortilla Chips</div> <div>\$1.69</div> <div>Limit 2 Expires 12/03/02</div> | <div>5004 COUPON</div> <div>Carnation Hot Cocoa Mix</div> <div>79¢</div> <div>10 ct. Box</div> <div>Limit 2 Expires 12/03/02</div> |
|--|--|--|--|

WE RESERVE THE RIGHT TO LIMIT QUANTITIES AND CORRECT PRINTED ERRORS • PRICES EFFECTIVE 11/29/02 thru 12/03/02